



22mm COMPACT INLET CONTROL VALVES

CWIC355030	3.0/6.0 bar, with cold water take off and expansion vessel connection
CWIC355035	3.0/4.75 bar, with cold water take off and expansion vessel connection
CWIC355040	2.0/6.0 bar, with cold water take off and expansion vessel connection
CWIC355045	2.1/8.0 bar, with cold water take off and expansion vessel connection
CWIC355050	1.5/3.0 bar, with cold water take off and expansion vessel connection
CWIC355055	1.8/3.5 bar, with cold water take off and expansion vessel connection
CWIC355060	3.0/5.0 bar, with cold water take off and expansion vessel connection
CWIC355065	3.0/8.0 bar, with cold water take off and expansion vessel connection
CWIC355070	3.5/8.0 bar, with cold water take off and expansion vessel connection
CWIC355090	3.5/6.0 bar, with cold water take off and expansion vessel connection
CWIC355200	3.5/6.0 bar, without cold water take off

OVERVIEW

A range of inlet controls with composite bodied relief valves to reduce heat loss and weight. This range of one piece inlet controls incorporates several different control devices in one. The inlet control valve is specifically designed for use on an unvented system to control the incoming water supply to a hot water cylinder or similar application. Compact and lightweight in design, the valve incorporates several different controls: a 'droptight' pressure reducing valve meaning the valve will hold at the pre-set pressure regardless of whether under flow or no flow conditions or fluctuating inlet pressures, a single check valve which will protect the system for backflow prevention up to fluid category 2, and a pre-set pressure relief valve which will prevent the system from overpressurisation. The expansion relief valve is designed so it can rotate, allowing the discharge connection to be easily fitted in various directions. The valve also includes a specific connection for a balanced cold water take off which can allow the user to connect a cold water feed direct from the inlet control valve, and a dedicated connection for an expansion vessel (exc. CWIC355200).



WATER CONTROLS FOR A MODERN WORLD

RELIANCE

TEMPERATURE CONTROL

FLOW CONTROL

HEATING SYSTEM COMPONENTS

WASHROOM SYSTEMS

HEATING & COOLING DISTRIBUTION SYSTEMS

PLUMBING SYSTEMS

22mm COMPACT INLET CONTROL VALVES

FEATURES AND BENEFITS

- Integral strainer
- Balanced cold water take-off
- 'Droptight' pressure reducing cartridge
- Prevents overpressurisation
- Single check valve
- Dedicated expansion vessel connection (on some models)
- Rotating expansion relief valve

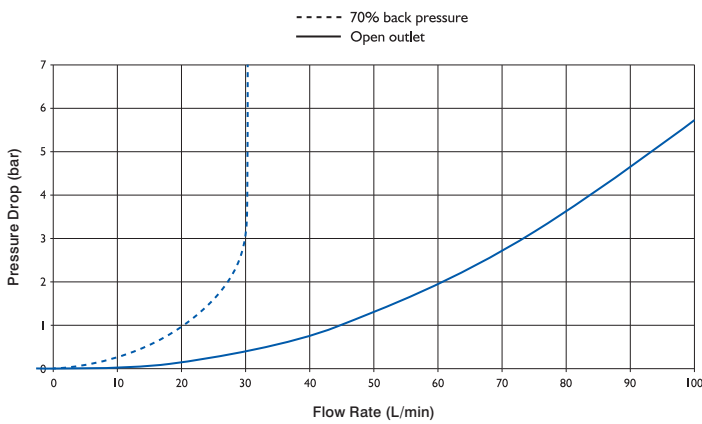
SPECIFICATIONS

Maximum working pressure:	16.0 bar
Maximum temperature:	45°C
Pressure reduction ratio:	10:1 max
Connection:	22mm

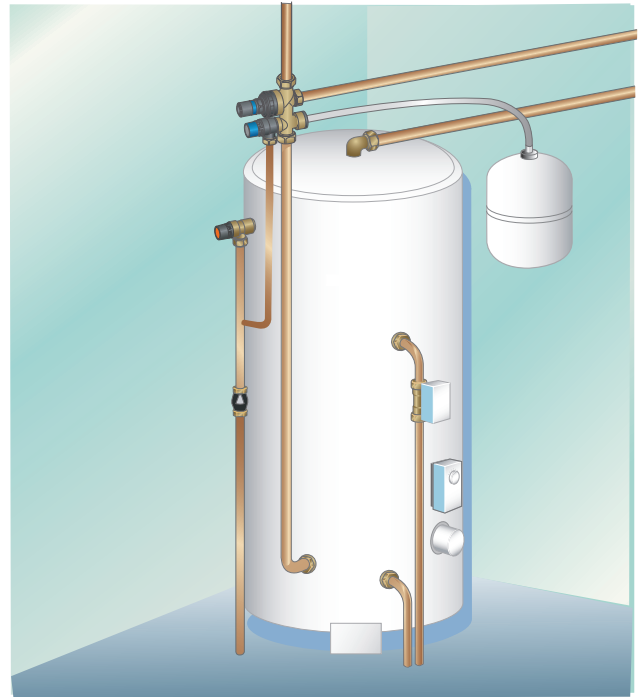
STANDARDS AND APPROVALS

- WRAS Approved
- BS EN 1567
- BS EN 1491
- EN 13959

FLOW RATES



TYPICAL INSTALLATION



DIMENSIONS

All dimensions in mm unless otherwise stated.

