

RevealShieldPRO™

**HANDHELD THERMAL CAMERA
DESIGNED FOR LAW ENFORCEMENT**

KEY CAMERA SPECS

- 320 x 240 Thermal Sensor
- 24° Field of View
- 40 to 330C Temperature Detection
- Long Range Detection
- Works Day & Night
- IP67 Rating

Seek
thermal

thermal.com



Highly durable and easy to use, RevealShieldPRO combines a high-performance 320 x 240 thermal sensor with intuitive software. When you need it, a powerful 300-lumen LED light is available at the touch of a button. RevealShieldPRO was specifically designed for Law Enforcement Professionals. Built with a rugged over-mold housing and IP67 waterproof rating, RevealShieldPRO is fit to withstand the elements.

Thermal Imaging helps you safeguard land & borders, quickly clear a room, find discarded evidence at night, and track perpetrators without a flashlight. Even the most elusive suspects can't hide their heat signature.

**Designed and Manufactured in Santa Barbara, California
with Global Components.**

KEY FEATURES

320 x 240 Thermal Sensor

Excellent image clarity and sensitivity with 76,800 pixels

Long-Range Detection

Detect a human at long distances in complete darkness

3.5 Hour Runtime

Long-Lasting rechargeable battery

Waterproof Design

Designed for the outdoors with IP67 rating

Lightweight & Easy-to-use

Intuitive, 3 button controls provide easy operation of your camera

BENEFITS

Safeguard Buildings, Land, and Borders

Military-proven surveillance technology that's affordable

Better Than Night Vision

Even the most elusive perpetrators can't hide their heat signature

Personal Safety

Clear a room without putting yourself in harm's way

Situational Awareness

It's a lot easier to stay safe when you can see in the dark

Recover Evidence

Recover discarded or hidden evidence invisible to the human eye

TECHNICAL SUMMARY

SPECIFICATIONS	DESCRIPTION
Thermal Sensor	320 x 240
Detection Distance	Long Range Detection
Field of View	24 Degree FOV
Frame Rate	9 Hz or 30 Hz
Zoom	4X Digital Zoom
IP Rating	IP67 Waterproof
Display	2.4" Color with Corning® Gorilla® GlassUncooled
Microbolometer	Vanadium Oxide
Startup Time	2-3 Seconds
Spectral Range	7.5 - 14 Microns
User Interface	Self-Contained Device with 3 Button Navigation
Detection Temp	-40 to 626F (-40 to 330C)
Storage Temp	-40 to 140F (-40 to 60C)
Operating Temp	-40 to 120F (-20 to 50C)
Runtime	Up to 3,5 Hours Thermal Imaging
Battery	Rechargeable Lithium Battery

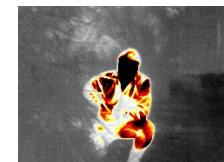
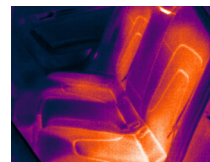
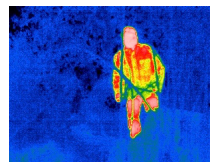
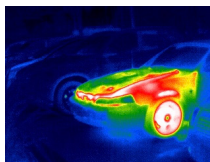
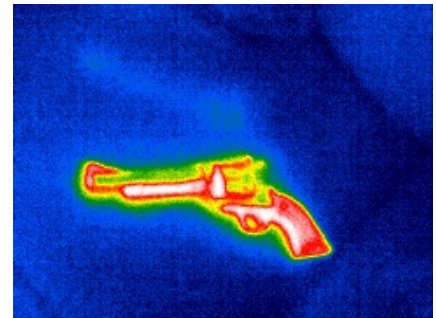
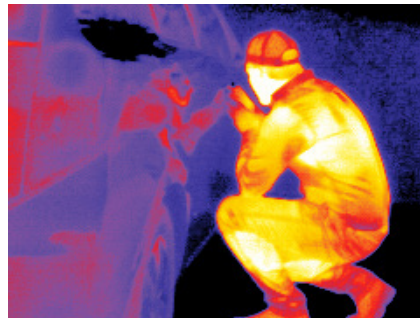
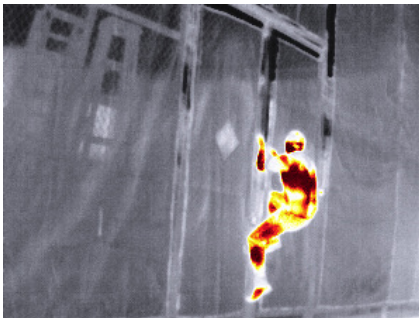
For support and user guides visit support.thermal.com

LIGHTWEIGHT & EASY-TO-USE



ACCESSORIES

- Lanyard Attachment
- Nylon Holster



Learn more at thermal.com

111 Castilian Drive, Santa Barbara, CA 93117 USA

Seek Thermal engineers, designs and manufactures high quality thermal imaging products and core platforms for consumer, commercial, and heat sensing IoT data applications. With headquarters in Santa Barbara, California, the global hub of thermal imaging innovation, the company has developed breakthrough thermal imaging camera cores that will enable a range of affordable products for use at home, work and play. For more information visit thermal.com and follow #seekthermal on Instagram and @seekthermal on Twitter.