

GLIDE JACKET

HOW TO LENGTHEN



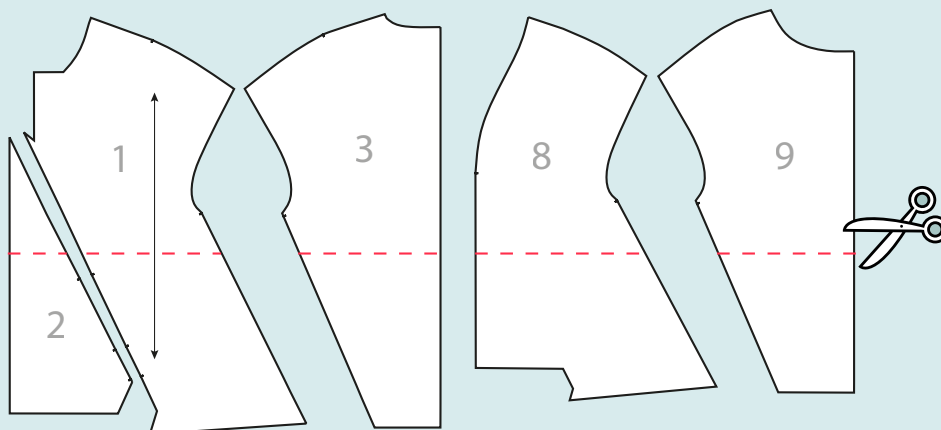
MADEIT PATTERNS

1

Roughly line up all your pieces and draw a horizontal line through them above the top of the pocket opening.

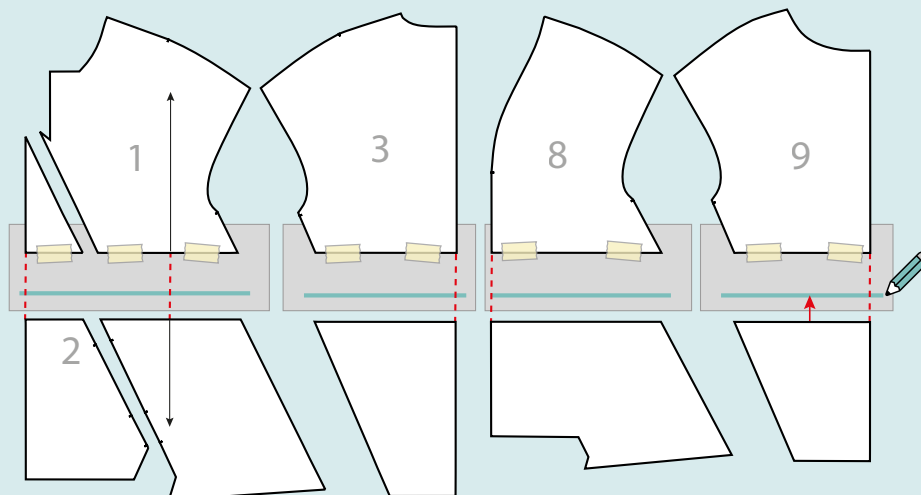
The line **MUST** be at right angles to the vertical grain lines.

Cut the pieces along the line.



2

Tape a strip of paper to the underside of the upper piece. Mark the amount you wish to lengthen onto the paper strip.



3

Tape the lower piece to the new mark, making sure the centre front/back and grain are in line.

Re-draw the new lines as indicated by the red dotted lines in the diagram.

Re mark the pocket opening notches onto the new lines on pieces 1 & 2.

