

Easy Three-sy Jacket

1

Before You Begin:

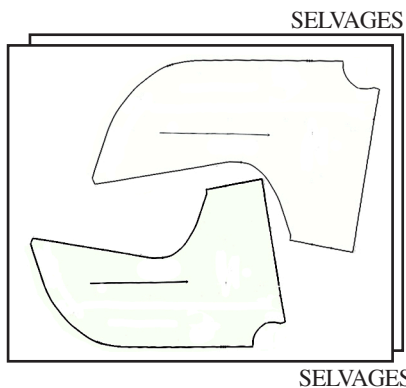
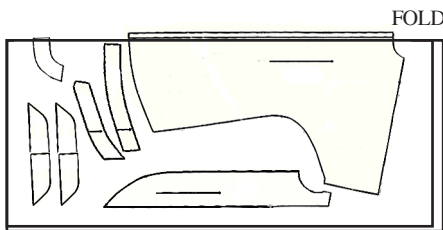
- Read all of the directions, for the jacket you want to make, before you begin.
- Prewash fabric before cutting. Avoid pressing fabric pieces after cutting as bias edges may stretch!
- For quick assembly, set up sewing machine, ironing board, iron, pins, scissors, fabric, thread, your favorite music?
- Mark right side of fabric with a pin or peel-off sticker as you finish cutting each piece.
- All seams are 5/8" unless noted. After stitching seams, trim, machine zigzag or serge fabric edge and press to finish.
- This great jacket is loose fitting thru the waist.
- Easy Three-sy has Three Easy Options: View 1 - Jacket with a full plain back, (top jacket on pattern front).
View 2 - Jacket with a pieced back, (middle jacket on pattern front), View 3 - Jacket with lower back seam open for a walking vent and a fabric overlay! (bottom jacket on pattern front)

Sizes	6	8	10	12	14	16	18	20	22	24
Bust	33	35 1/2	36	38	39	41	42	44	46	48
Waist	25	26 1/2	27	29	30	32	34	36	38	40
Hip	35	36 1/2	38	40	41	43	44	46	48	51

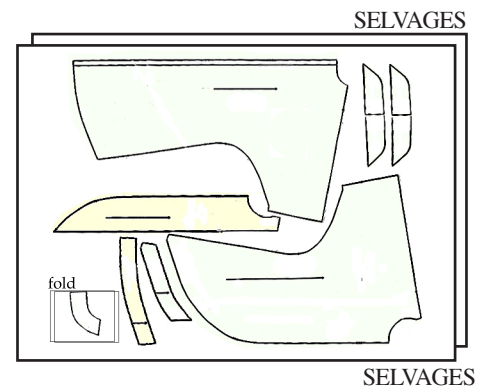
Jacket Layout View 1

44"- 45" fabric Sizes: 6-14

Front and Sleeve Back and Sleeve
Front Facing Back Neck Facing
Front Hem Facing Back Hem Facing
Right/Left Sleeve Cuff (put pieces side
by side and tape together for your size).



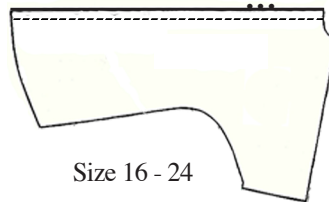
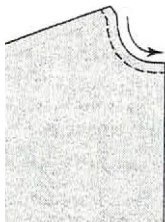
44"- 45" fabric Sizes: 16-24



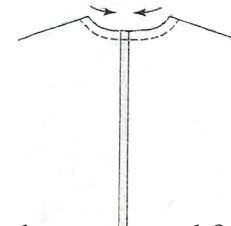
Assembling the Jacket

Prepare the Front and Back Neckline

Front neck: Stay stitch 1/2" from cut edge of Front neck in direction of arrow. Back stitching is not necessary.



Size 16 - 24

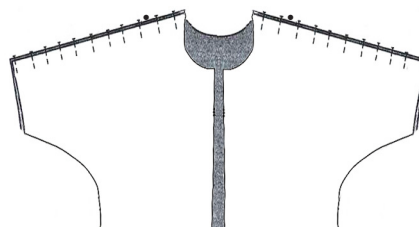


Size 16-24: With Right sides together, pin center back seam of the jacket Back. Stitch or serge and finish seam.

Back neck: Stay stitch 1/2" from cut edge of Back neck in direction of arrows.

Shoulder Seams

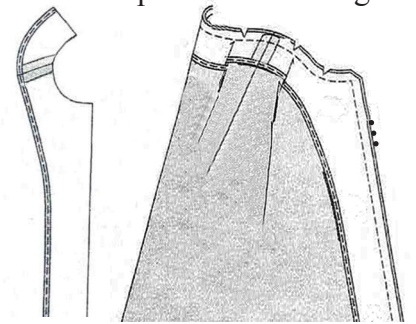
With Right sides together, pin Front to Back at shoulders, matching dots. Stitch or serge, finish seams and press seams toward jacket back.



Neck Facings

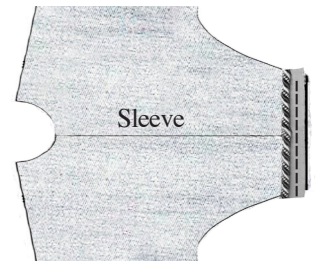
Stitch Front Neck Facing to Back Neck Facing at shoulder seams. Press flat; then press seam open. Turn raw edge of facings under 1/4" press and edge stitch 1/8" from pressed edge. Note: if you are sewing with rayon, be careful not to stretch the fabric as you edgestitch.

With Right sides together, pin Facing to jacket, matching dots, front centers, and shoulder seams. Stitch! Trim seam, cutting fabric with the scissors on an angle to "grade" or layer the seam. Carefully cut off point at center fronts. Clip neck and curve on lower Front. Okay, go ahead, try on your jacket! Lookin' good!!!



Optional: Add Trim Between Sleeve and Overlapping Tulip Cuff

Lay the jacket out with sleeves flat. Pin the trim on the Outside of each Sleeve placing the trim stitching-line, 5/8" from the raw edge. Stitch in place.



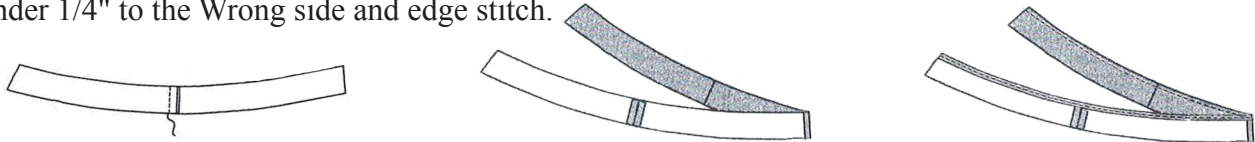
Underarm and Side Seams

With Right sides together, pin underarm and side seams, stitch, finish seams, press toward jacket back. Sewing this seam will enclose the raw edges of your trim or piping. Now you can trim the piping to reduce bulk.

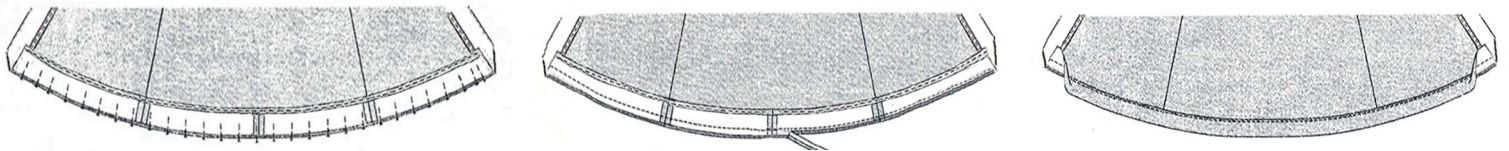


Hem Facings

Hem Facings give your jacket a nice weight and finish off the inside of the jacket. With Right sides together, pin and stitch the center ends of each Back Hem Facing together. Next pin each Front Hem Facing to the Back Hem Facing at their side seams. Stitch, open seams, press flat; then press seam open. Press the top edge of the Hem Facing under 1/4" to the Wrong side and edge stitch.

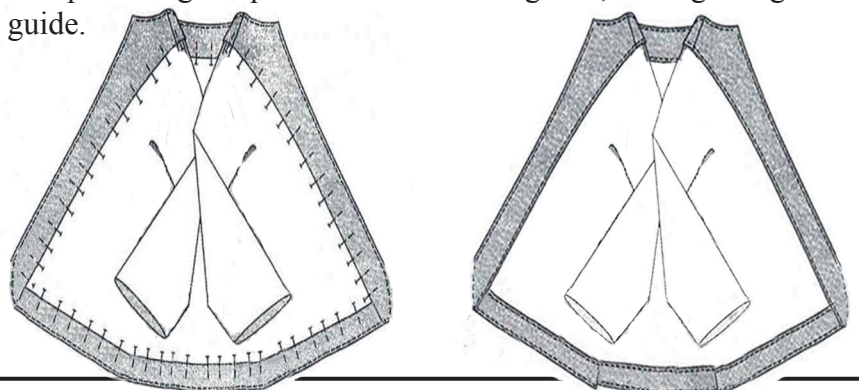


Pin the Front/Back Facing to the lower edge of the jacket starting at the center back, matching side seams and overlapping the Front Facings. Stitch! Trim the seam allowance, grading the layers. Press Facing and seam allowance away from the jacket. Understitch, stitching seam allowances to the facing as close to the stitching line as possible.



Topstitch the Facing to the Jacket

Turn the jacket right side out (except sleeves). Start with a final press and pinning at the neckline, fronts of jacket and hem to hold the facing in place for topstitching. I chose to edgestitch View 1 and then topstitch. If you want that too, press, pin and edgestitch first. Then do the topstitching. Topstitch from the facing side, sewing along the turned under edge using your edge stitching as a guide.



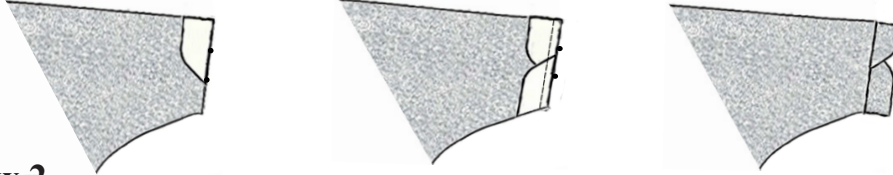
Overlapping Tulip Cuff

Use 3/8" seam allowance for this step. With Right sides together, stitch the curved edge of each Sleeve Cuff Front/Back together. Press seam flat; then open, turn Wrong sides together and baste edges together.

3



OMG, the final steps! Matching the dots, pin Cuff around the Outside of the Sleeve starting on the Front and pinning toward the shoulder seam of the jacket. The end of the Cuff will overlap the beginning of the Cuff. The dots on the end of the Cuff should match the beginning dots. Trim, finish and repeat! Ta-da!!! Enjoy!

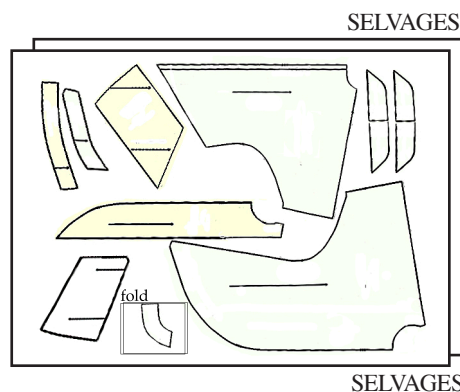


Jacket Layout View 2

44"- 45" fabric All Sizes

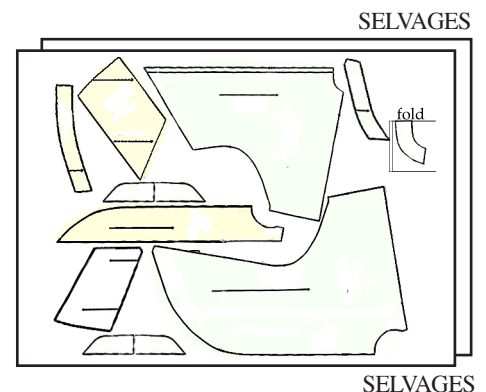
Front and Sleeve
Front Facing
Front Hem Facing
Right/Left Sleeve Cuff (**put pieces side by side and tape together for your size**).
Lower Middle Panel
Lower Side Panel

Back and Sleeve
Back Neck Facing
Back Hem Facing



44"- 45" fabric All Sizes

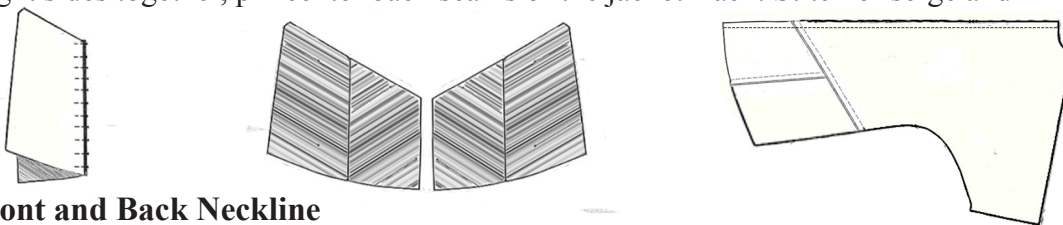
Turning Cuffs Cross-Grain



Assembling the Jacket

Prepare the Jacket Back

Lower Middle Panel & Lower Side Panel. With Right sides together, pin the inside edge of the Lower Middle Panel to the inside edge of the Lower Side Panel. Stitch, finish seams and press flat; then open. With Right sides together, pin the top of each Lower Panel to the bottom of each upper Back. Stitch, finish seams, press. Here comes the reward. With Right sides together, pin center back seams of the jacket Back. Stitch or serge and finish seam!



Prepare the Front and Back Neckline

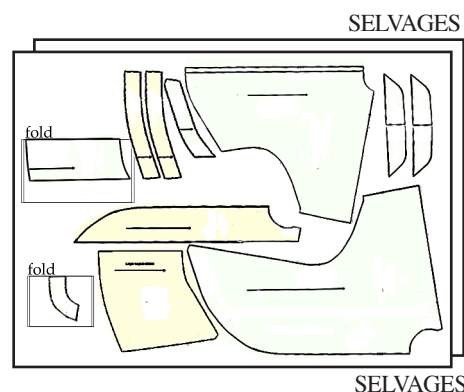
•• Go to the **Prepare the Front and Back** heading at the bottom of page 1. Follow View 1 directions. Your jacket Back is already sewn together!

44"- 45" fabric All Sizes

Jacket Layout View 3

Front and Sleeve
Front Facing
Front Hem Facing
Right/Left Sleeve Cuff (**put pieces side by side and tape together for your size**).
Walking Flap Overlay
Lower Panel

Back and Sleeve
Back Neck Facing
Back Hem Facing 2 sets

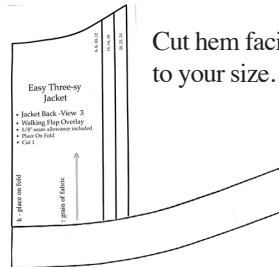


Assembling the Jacket

Prepare the Jacket Back

Walking Flap Overlay. Off to the ironing board with the Walking Flap Overlay! Press each outside edge under $5/8$ " open out, fold raw edge to pressed line and press again. Edgestitch each side $1/8$ " from pressed edge.

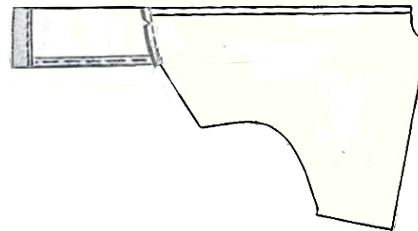
Match, the back hem facings to the center of the Walking Flap Overlay pattern, cut one pair of Hem Facings to your size. Use $1/4$ " seam to stitch the center of the Facings together. Press. Press the top edge of the hem facing under $1/4$ " to the Wrong side and fold the facing ends in $3/8$ " press.



Cut hem facings to your size.

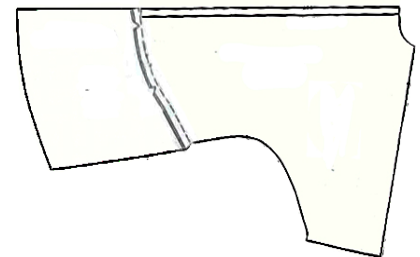
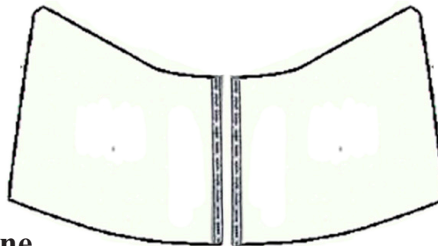


Pin the hem Facing to the lower edge of the Walking Flap Overlay and stitch. Trim the seam allowance. Press Facing and seam allowance away from the Overlay. Now, with Wrong sides together, press the Facing in place. Edgestitch from the facing side, sewing along the turned under Facing edge!



Lower Panel. Press each outside edge under $5/8$ " open out, fold raw edge to pressed line and press again. Edge stitch each side $1/8$ " from pressed edge. With Right sides together, pin the top edge of each Lower Panel to the bottom edge of the Back aligning the inner edges with the Back center seam. Stitch, finish seams.

Wow, looks great!



Prepare the Front and Back Neckline

•• Go to the **Prepare the Front and Back** heading at the bottom of page 1. Follow View 1 directions. However, your jacket Back is sewn together! Also, rather than stitching the Back Hem Facing center seam together, you will fold it under $5/8$ " and press!

I hope you are enjoying Easy-Three-sy Jacket pattern. Look for us online for ideas and how to's on making your own flange trim, or piping, placing a button and large snap or loop and button and fellow seamstresses ideas. Hint, hint, send me pictures!!!

Enjoy!!!

cntpattern.com
cntpatternco@gmail.com
we sell rayon too!