

**LA PORCELLANA**  
CHINA GLASS CUTLERY  
[www.laporcellana.co.uk](http://www.laporcellana.co.uk)

Inspiring the Restaurateur

# Buffet Presentation

Premium Tableware  
from Leading European Brands  
2019 -2020





# LA PORCELLANA

CHINA GLASS CUTLERY  
www.laporcellana.co.uk

For over 40 years we have built a strong reputation in selecting a comprehensive range of tableware sourced from major manufacturers worldwide, reflecting both quality and innovative design.

We have an extensive portfolio providing tableware to some of the most exclusive hotels and restaurants throughout the UK.

## Specialists in Personalised Tableware

With our own In-House design, printing studio and decorating workshop, La Porcellana offers the most cost-effective production for personalised tableware.

This ensures a quality product and a prompt service to all our customers.





### **In-House Decoration**

Should you choose to have your tableware uniquely decorated to your specification, our purpose-built In-House Design, Print and Decoration Workshop, coupled with our on-site kiln firing, allows us to offer you the most cost-effective production and fastest turnaround of Personalised Tableware.

### **3,000 Sq Ft Showroom**

Our newly refurbished 3,000 sq ft London showroom provides the best environment for you to view our vast collection of tableware. Here you will be able to meet with one of our sales representatives and discuss your requirements in more detail.

### **10,000 Sq Ft Stock Holding**

We have carefully selected all the products featured within this brochure, sourced from leading manufacturers worldwide, and the vast majority of items are stocked at our purpose-built 10,000 sq ft warehouse in London.

### **No Minimum Order Requirements**

This applies to all Nationwide deliveries. We only ask that you order in the appropriate pack quantities.

### **Pricing**

We aim to offer the best and most competitive prices across all our products. Should you find any product cheaper elsewhere, please contact a member of our team and we will seek to match, if not improve on the price you have been quoted.

All prices are exclusive of VAT and are valid until 1st April 2020.

### **How to Order**

Call our Sales office on 020 8671 5959 to place your order or request to meet with one of our sales representatives to discuss your requirements in more detail.



**ORDERLINE**  
**020 8671 5959**



# Buffet Presentation

.....

Designed and manufactured in Italy, our new Buffet Collection has been carefully selected with the aim to provide both the hotelier and the outside caterer the most attractive and practical solutions for all their food presentation needs.

Whether you seek a modern or classic setting, we offer a wide variety of chafing dishes and showcases, all manufactured by SAMBONET.

To complement your buffet solution, we have shortlisted a comprehensive range of hand-made glass from IVV, that can be used for both food display or appetizers and canape service.



**Sambonet** 112 - 113  
Chafing Dishes - Modern

**Sambonet** 114 - 115  
Chafing Dishes - Classic

**Sambonet** 116 - 117  
Showcases

**Sambonet** 118 - 125  
Italian Buffet

**1. RECTANGULAR CHAFER GN 1/1**

Size: 57x47cm, 10Ltr.

Supplied with Stand - Closure on Long Side

58162A54 Alcohol Heating £1,296.75

5.82E+58 Electric £1,420.64

Supplied with Stand - Closure on Short Side

58162A56 Alcohol Heating £1,296.75

5.82E+60 Electric £1,420.64

For Counter Sinking - Closure on Long Side

58162A55 Alcohol Heating £992.87

5.82E+59 Electric £1,040.00

For Counter Sinking - Closure on Short Side

58162A57 Alcohol Heating £992.87

5.82E+61 Electric £1,040.00

**2. RECT. CHAFER GN1/1 - WITH WINDOWS**

Size: 57x47cm, 10Ltr, GN1/1

Supplied with Stand - Closure on Long Side

58172A54 Alcohol Heating £1,266.54

5.82E+58 Electric £1,371.37

Supplied with Stand - Closure on Short Side

58172A56 Alcohol Heating £1,266.54

5.82E+60 Electric £1,371.37

For Counter Sinking - Closure on Long Side

58172A55 Alcohol Heating £997.81

5.82E+59 Electric £1,096.92

For Counter Sinking - Closure on Short Side

58172A57 Alcohol Heating £997.81

5.82E+61 Electric £1,096.92

**3. ROUND CHAFER WITH STAND**

Alcohol Heating:

58166A24 24cm/2ltr £609.73

58166A30 30cm/3ltr £664.51

58166A36 36cm/5ltr £761.20

58166A40 40cm/8ltr £862.62

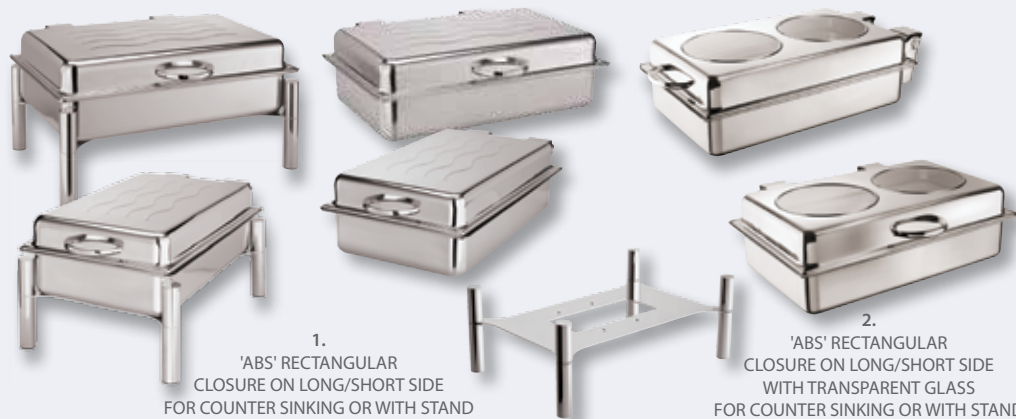
Electric Heating:

58166E24 24cm/2ltr £738.87

58166E30 30cm/3ltr £814.00

58166E36 36cm/5ltr £903.98

58166E40 40cm/8ltr £967.45



1.  
'ABS' RECTANGULAR  
CLOSURE ON LONG/SHORT SIDE  
FOR COUNTER SINKING OR WITH STAND

2.  
'ABS' RECTANGULAR  
CLOSURE ON LONG/SHORT SIDE  
WITH TRANSPARENT GLASS  
FOR COUNTER SINKING OR WITH STAND

## Atlantic Buffet System - ABS

All rectangular 'ABS' chafing dishes are GN1/1.

**sambonet®**

# Chafing Dishes Modern - Sambonet

Atlantic Buffet System: Multifunctional, practical and easy to handle. Sleek design, stackable and easy to clean. All components can be quickly disassembled - no screws, no tools required. Suitable for use on any type of stove - gas, electric and induction. Now available with transparent glass window.



## Suitable for gas, electric & induction

Round chafing dishes come in 4 sizes, 24cm, 30cm, 36cm & 40cm.



STAINLESS STEEL  
18/10  
QUALITY

### 4. ROUND CHAFER WITH GLASS & STAND

Alcohol Heating:		
58176A30	30cm/3ltr	£752.73
58176A36	36cm/5ltr	£863.94
58176A40	40cm/8ltr	£974.82
Electric Heating:		
58176E30	30cm/3ltr	£902.22
58176E36	36cm/5ltr	£1,006.72
58176E40	40cm/8ltr	£1,079.65

### 5. PETITE MARMITE WITH STAND 7ltr

Alcohol Heating:		
58168A24	24cm Dia.	£738.32
Electric Heating:		
58168E24	24cm Dia.	£867.46

## Accessories

### 6. ELECTRIC HEATING UNIT

To fit ALL Rect Asia & Atlantic Chafers		
58132-KE	220V / 380W	£252.33
To fit Rnd Atlantic Chafers 36cm & 40cm		
58166-KE	220V / 200W	£219.23
To fit Rnd Atlantic Chafers 30cm		
58166-KP	220V / 180W	£225.94
To fit Rnd Asia Chafer 40cm		
58132-KE	220V / 380W	£252.33
To fit Rnd Asia Chafer 33cm		
58136-KE	220V / 200W	£215.16
To fit Rnd Atlantic Chafer 24cm & Petite Marmite 24cm		
58341-KE	220V / 80W	£162.39

### 7. FUEL HOLDER KIT

58132-KA	2 Burners	£135.20
58136-KA	Single Burner	£76.45

### 8. INDUCTION COOKER

58162-RA	Built-in	£873.10
58162-RB		£835.45

sambonet®

## Asia/Asia2000

**1. 'ASIA' RECTANGULAR GN 1/1**

Supplied with GN 1/1 Dish 10cm (h)

**Alcohol Heating:**

58132A54 68x44cm £1,523.12

**Electric Heating:**

58132E54 68x44cm £1,630.97

**2. 'ASIA' RECT GN 1/1 (counter sunk)**

Supplied with GN 1/1 Dish 6cm (h)

**Alcohol Heating:**

58132A55 67x44cm £1,262.23

**Electric Heating:**

58132E55 67x44cm £1,370.08

**3. 'ASIA' ROUND (counter sunk)**

Supplied with Porcelain Insert

**Alcohol Heating:**

58136A34 33cm £837.11

58136A41 40cm £1,036.17

**Electric Heating:**

58136E34 33cm £982.49

58136E41 40cm £1,144.02

**4. 'ASIA' ROUND**

Supplied with Porcelain Insert

**Alcohol Heating:**

58136A33 33cm £1,192.10

58136A40 40cm £1,503.00

**Electric Heating:**

58136E33 33cm £1,337.48

58136E40 40cm £1,610.84

**5. 'ASIA 2000' RECT GN 1/1**

Supplied with GN 1/1 Dish 6.5cm (h)

**Alcohol Heating:**

58152A54 67x49cm £1,396.76

**Electric Heating:**

58152E54 67x49cm £1,504.62

**Chafing Dishes Classic - Sambonet**

A range of classic chafing dishes, some of which can be counter-sunk. 'Asia' offers both rectangular and round chafers including counter-sunk versions, making this a very flexibal range. Either alcohol or electric heating options.



1.

**'ASIA' RECTANGULAR**Supplied with GN pan dish (h) 6.5mm  
GN 1/1

2.

**'ASIA' RECTANGULAR**Supplied with GN pan dish (h) 6.5mm  
GN 1/1 BUILT-IN UNIT

3.

**'ASIA' ROUND**Supplied with pan dish  
BUILT-IN UNIT  
Ø 33cm, Ø 40cm

4.

**'ASIA' ROUND**Supplied with pan dish  
Ø 33cm, Ø 40cm

5.

**'ASIA 2000' RECTANGULAR**Supplied with GN pan dish (h) 6.5mm  
GN 1/1

6.

**'ASIA 2000' ROUND**Supplied with pan dish  
Ø 33cm, Ø 40cm





7.  
SOUP TUREEN SET  
FOR CHAFING DISH - GN 1/1



8.  
SOUP TUREEN  
FOR ROUND CHAFING DISH  
Ø 33cm



9.  
'AMERICA' RECTANGULAR  
Supplied with GN pan dish (h) 6.5mm  
GN 1/1



10.  
ROUND FOOD PANS  
SAINLESS STEEL/PORCELAIN



11.  
RECTANGULAR/SQUARE  
FOOD PANS  
SAINLESS STEEL/PORCELAIN

STAINLESS STEEL  
18/10  
QUALITY

#### 6. 'ASIA' 2000 ROUND

Supplied with Porcelain Insert

##### Alcohol Heating:

58156A33	33cm	£1,038.55
58156A40	40cm	£1,203.60

##### Electric Heating:

58156E33	33cm	£1,183.93
58156E40	40cm	£1,311.44

#### 7. 'ASIA 2000' SOUP TUREEN SET

Supplied with cover and adapter  
for asia rectangular chafer

58132-GB	33cm	£443.46
----------	------	---------

#### 8. 'ASIA 2000' SINGLE SOUP TUREEN

Supplied with cover and adapter  
for asia round chafer

58136-GA	33cm	£253.88
----------	------	---------

## America

#### 9. 'AMERICA' RECTANGULAR GN 1/1

Supplied with 2 fuel holders

##### Alcohol Heating:

57112A54	78x49cm	£4,403.24
----------	---------	-----------

#### Silverplated Chafing Dishes

Please ask for details

## Accessories

#### 10. ROUND CHAFER INSERTS

Porcelain - Basic

58166-EL	30cm	£67.87
58166-EC	36cm	£79.86

Porcelain - Divided

58166-ED	36cm	£88.44
----------	------	--------

Stainless Steel - Basic

58166-EG	24cm	£44.88
58166-EM	30cm	£56.21

58166-EH	36cm	£64.79
58166-EI	40cm	£79.20

#### 11. RECTANGULAR CHAFER INSERTS

Porcelain - 6.5cm Deep

44332-06	GN 1/1	£117.43
44333-06	GN 2/3	£63.58
44335-06	GN 1/2	£43.30
44337-06	GN 1/3	£28.67

Stainless Steel - GN 1/1

14102-04	4cm Deep	£18.48
14102-06	7cm Deep	£22.29
14102-10	10cm Deep	£25.88

Stainless Steel - GN 2/1

14103-06	7cm Deep	£16.69
14103-10	10cm Deep	£20.39

Stainless Steel - GN 1/2

14105-06	7cm Deep	£13.52
14105-10	10cm Deep	£16.48

Stainless Steel - GN 1/3

14107-06	7cm Deep	£10.66
14107-10	10cm Deep	£12.48

Stainless Steel - GN 1/4

14108-06	7cm Deep	£9.08
14409-01	Adapter Bar	£3.99



sambonet®

Keep Cool!  
GN 1/1 sized  
cooled showcases



# Showcases Sambonet

Presenting GN 1/1 sized cooled showcases that come equipped with a roll-top or hinged cover, eutectic pads and a choice of various inserts to suit your needs; A standard deep porcelain insert, a wooden board to display cold meats or a stainless steel grid tray ideal for displaying yogurts or desserts.

## Europa



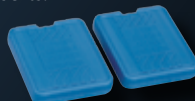
1.  
COOLED BUFFET SHOWCASE  
WITH ROLL-TOP COVER  
GN 1/1 TRAY (h)2cm



2.  
WITH GN 1/1 GRID



3.  
WITH WOODEN  
CUTTING BOARD



All showcases are equipped with eutectic pads.

STAINLESS STEEL  
18/10  
QUALITY

## Asia



4.  
COOLED BUFFET SHOWCASE  
WITH ROLL-TOP COVER  
GN 1/1 TRAY (h)6cm



5.  
WITH CHINA DISH  
(h)6cm



6.  
WITH WOODEN  
CUTTING BOARD



7.  
WITH GN 1/1 GRID

## Atlantic



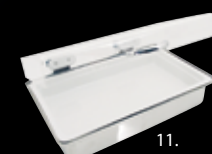
8.  
COOLED BUFFET SHOWCASE  
WITH HINGED TOP  
GN 1/1 TRAY (h)2cm



9.  
WITH GN 1/1 GRID



10.  
WITH WOODEN  
CUTTING BOARD



11.  
WITH CHINA DISH  
(h)6cm

- 1. 'EUROPA' COOLED BUFFET SHOWCASE**  
Inc. Eutectic Pads, GN 1/1 2cm (h), Roll-Top Cover  
58425-48 57x36cm £536.17
- 2. 'EUROPA' COOLED BUFFET SHOWCASE**  
Inc. Eutectic Pads, GN 1/1 GRID, Roll-Top Cover  
58425-40 57x36cm £527.65
- 3. 'EUROPA' COOLED BUFFET SHOWCASE**  
Inc. Eutectic Pads, GN 1/1 2cm (h), Cutting Board, Roll-Top Cover  
58425-42 57x36cm £748.76
- 4. 'ASIA' COOLED BUFFET SHOWCASE**  
Inc. Eutectic Pads, GN 1/1 2cm (h), Roll-Top Cover  
58435-48 57x36cm
- 5. 'ASIA' COOLED BUFFET SHOWCASE**  
Inc. Eutectic Pads, GN 1/1 2cm (h) Porcelain Dish, Roll-Top Cover  
58436-60 57x36cm £734.21
- 6. 'ASIA' COOLED BUFFET SHOWCASE**  
Inc. Eutectic Pads, GN 1/1 2cm (h), Cutting Board, Roll-Top Cover  
58435-42 57x36cm £868.87
- 7. 'ASIA' COOLED BUFFET SHOWCASE**  
Inc. Eutectic Pads, GN 1/1 GRID, Roll-Top Cover  
58435-40 57x36cm £691.31
- 8. 'ATLANTIC' COOLED BUFFET SHOWCASE**  
Inc. Eutectic Pads, GN 1/1 Container, GN 1/1 Tray, Roll-Top Cover  
58466-48 55x46cm £767.29
- 9. 'ATLANTIC' COOLED BUFFET SHOWCASE**  
Inc. Eutectic Pads, GN 1/1 Container, GRID, Roll-Top Cover  
58466-40 55x46cm £771.58
- 10. 'ATLANTIC' COOLED BUFFET SHOWCASE**  
Inc. Eutectic Pads, GN 1/1 6cm (h), Cutting Board, Roll-Top Cover  
58466-42 55x46cm £876.38
- 11. 'ATLANTIC' COOLED BUFFET SHOWCASE**  
Inc. Eutectic Pads, GN 1/1 6cm (h) Porcelain Dish, Roll-Top Cover  
58466-60 55x46cm £835.92

**Silverplated Showcases**  
Also available. Ask for details.

**sambonet®**

**1. TABLE STAND - 2 TIER**

58489-02 GN 1/1 - GN 1/2 £250.64

**2. TABLE STAND - 3 TIER (A)**

58489-13 GN 1/2x3 £311.19

**3. TABLE STAND - 3 TIER (B)**

58489-03 GN 1/2x2-GN 1/1 £316.15

**4. BOWL HOLDER 1 OR 2 HOLE**

58489-10 27x33.5cm, 1 hole £54.22

58482-BA 33.5x52cm, 2 hole £64.68

**5. MULTI-LEVEL RISER (A) - WOOD**

58482-01 40x30x63cm(h) £318.00

**6. MULTI-LEVEL RISER - WOOD/PLEXIGLAS**

58482-11 40x30x63cm(h) £393.14

**7. MULTI-LEVEL RISER (B) - WOOD**

58482-03 40x30x56cm(h) £307.00

**8. BOWL - MELAMINE**

WHITE

44837-25 23cm, 10.5(h) £15.91

44837-05 14cm, 6.5cm(h) £5.65

BLACK

44837B25 23cm, 10.5(h) £15.91

44837B05 14cm, 6.5cm(h) £5.65

**9. BOWL - GLASS**

41400-AA 23cm, 10.5(h) £7.95

41405-AA 14cm, 6.5cm(h) £8.91

# Innovation, flexibility & design

A premium customisable system for contemporary buffets & banquets



1.  
TABLE STAND  
2 TIER

2.  
TABLE STAND  
3 TIER (A)

3.  
TABLE STAND  
3 TIER (B)

4.  
BOWL HOLDER  
1 OR 2 HOLE

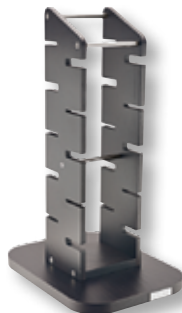
## Assembly Solution

Comprising of:

- 58489-02 - Table stand - 2 Tier
- 42461-11 - Basket
- 58489-10 - Bowl holder
- 44837-25 - Bowl

# Italian Buffet Sambonet

A new modular system for a tailormade buffet. The Italian Buffets strength is its customization. Through a series of specially shaped columns, the configuration may be organized many different ways, thanks to a practical system of wenge wood and tempered glass shelves manufactured with premium materials.



5. MULTI-LEVEL RISER (A)  
WOOD



6. MULTI-LEVEL RISER  
WOOD & PLEXIGLAS



7. MULTI-LEVEL RISER (B)  
WOOD



8. BOWL  
MELAMINE



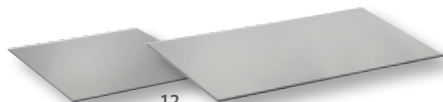
9. BOWL  
GLASS



10. AIRTIGHT COVER



11. COVER



12. SHELF  
BLACK TEMPERED GLASS



13. SHELF  
WOOD



## Assembly Solution

- Comprising of:
- 58482-01 - Multi-level riser - Wood x2
  - 58489-11 - Shelf - Small - Small x2
  - 58489-10 - Bowl holder - 1 Hole x2
  - 58482-BB - Shelf - Wood x3
  - 44837-25 - Bowl- Round x2
  - 42452-23 - Airtight cover

<b>10. AIRTIGHT COVER</b>		
42452-23	23cm	£29.99
42452-14	14cm	£16.05

<b>11. COVER</b>		
42453-23	23cm	£19.89

<b>12. SHELF - BLACK TEMPERED GLASS</b>		
58482-DA	35x35x0.6cm(h)	£48.90
58482-DB	35x85x0.6cm(h)	£68.02

<b>13. SHELF - WOOD</b>		
58498-11	27x33.5cm	£53.90
58482-BB	35x 85cm	£93.50

## Assembly Solution

Comprising of:

- 58482-03 - Multi-level riser (B) x2
- 58482-BA - Bowl Holder - 2 Hole x2
- 58489-10 - Bowl holder - 1 Hole x1
- 44837-25 - Round bowls x5



**sambonet**<sup>®</sup>

**1. CHAFING DISH - ROUND**

58186E30	30cm	£902.22
58186E36	36cm	£1,006.72
58186E40	40cm	£1,079.65

**2. RISER**

58484-10	59.5x33.5x15cm	£114.40
58484-11	62.5x33.5x27cm	£139.04

**3. BOWL RISER**

58484-03	59.5x33.5x15cm	£96.58
----------	----------------	--------

**4. GN 1/1 BREAD BASKET WITH COVER FIXING FRAME**

42461-11	53x32.5x10cm	£52.25
----------	--------------	--------

**5. GN 1/1 ROLL-TOP COVER**

42452-53	53x32.5x17cm	£32.67
----------	--------------	--------

**6. GN BREAD BASKET**

42462-12	GN 1/2-6.5cm(h)	£18.48
42462-11	GN 1/1-6.5cm(h)	£31.35

**7. GN COVER**

41419-12	GN 1/2-17cm (h)	£45.43
41418-11	GN 1/1-20cm (h)	£113.52



1.  
CHAFING DISH  
ROUND

## Assembly Solution

Comprising of:

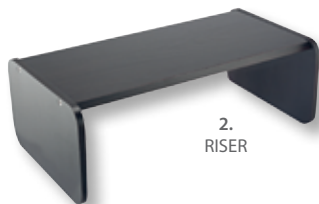
- 58482-01 - Multi-level riser (A)
- 58489-11 - Shelf - Wood
- 58489-10 - Bowl Holder - Wood
- 44837-25 - Bowl - Melamine
- 42452-23 - Airtight cover
- 58482-DA - Shelf - Glass x2



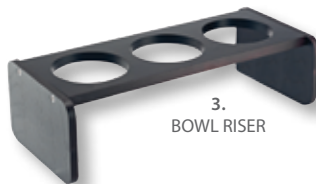
**sambonet®**

# Italian Buffet Sambonet

The customized concept assures esthetic, usable and versatile presentation of food, appetizers and drinks, as well as countless configurations thanks to its many different components. From elegant stands for chafing dishes to refrigerated showcases, from adjustable shelves of different sizes and heights to coordinated beverage dispensers.



2.  
RISER



3.  
BOWL RISER



## Assembly Solution

Comprising of:

- 58484-03 - Bowl riser
- 42452-14 - Airtight cover
- 44837-25 - Bowl - Round

# Versatile presentation of food

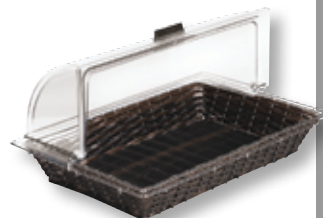
A premium customisable system for contemporary buffets & banquets



4.  
BREAD BASKET  
WITH COVER FIXING FRAME



5.  
GN ROLL-TOP COVER



## Assembly Solution

Comprising of:

- 42461-11 - Bread basket
- 42452-53 - GN roll-top cover



6.  
BREAD BASKET



7.  
GN COVER



## Assembly Solution

Comprising of:

- 58484-11 - Riser
- 58485-00 - Cool box
- 14102-02 - Tray
- 58485-AB - Roll-top cover

**sambonet**<sup>®</sup>

**1. COOL SHOWCASE WITH TRAY & ROLL-TOP COVER GN 1/1**

58485-12 59.5x39x30cm (h) £573.45

**2. COOL SHOWCASE WITH PERFORATED TRAY GN 1/1**

58485-02 59.5x39x10cm (h) £296.82

**3. COOL SHOWCASE GN 1/1**

58485-00 59.5x39x10cm (h) £241.95

**4. JUICE / MILK DISPENSER**

58383-07 7LT £583.25

**5. COOL SHOWCASE (GN 1/) WITH 6 BOWLS & COVERS**

58485-06 59.5x39x10cm (h) £458.06

**6. ROLL-TOP COVER GN 1/1 - PLEXIGLAS**

58485-AB 59.5x39x20cm (h) £326.49

**7. TRAY GN 1/1 - STAINLESS STEEL**

14102-02 53x32.5cm £19.24

**8. TRAY GN 1/1 - PERFORATED - S/STEEL**

14202-02 53x32.5mm £75.24



1.  
COOL SHOWCASE  
WITH TRAY & ROLL-TOP COVER GN 1/1



2.  
COOL SHOWCASE  
WITH PERFORATED TRAY GN 1/1



3.  
COOL SHOWCASE  
GN 1/1



4.  
JUICE / MILK  
DISPENSER



5.  
COOL SHOWCASE GN 1/  
WITH 6 BOWLS & COVERS



6.  
ROLL-TOP COVER GN 1/1  
PLEXIGLAS



7.  
TRAY GN 1/1  
STAINLESS STEEL



8.  
TRAY GN 1/1  
PERFORATED - STAINLESS



**sambonet®**



# Italian Buffet Sambonet

Showcases main frame, bases and service boards are made of MDF wood (medium density fiberboard). Column multi-level risers made of MDF wood and Plexiglas. Surfaces made of MDF wood and tempered glass, thickness 6 mm. Tubular metal structure in 18/10 stainless steel.



<b>9. EUTECTIC PAD</b> 42450-AD 41x21x2.5cm (h)	£25.58
<b>10. CUTTING BOARD</b> 58485-AA 53x32cm	£68.40
<b>11. INSERT FOR 6 BOWLS</b> 58489-06 53x32cm	£87.56
<b>12. CEREAL / JUICE PITCHER - BAR</b> 58489-00 39x22x10cm (h)	£175.82
<b>13. CAKE STAND</b> 58488-28 28cm - 12cm (h) 58488-38 38cm - 12cm (h) 58488-78 28cm - 17cm (h) 58488-88 38cm - 17cm (h)	£132.32 £157.68 £141.55 £159.88
<b>14. JUICE PITCHER WITH COOLER</b> 44995-14 1.4LT - 27cm (h)	£48.77
<b>15. JUICE PITCHER</b> 44995-10 1LT - 29cm (h)	£31.82
<b>16. EUTECTIC PADS - 2 PCS</b> 58489-VA	£16.72
<b>17. PITCHER</b> 58401-EP 2LT	£51.52
<b>18. LID - CEREAL / JUICE PITCHER</b> 58401-EQ Juicer Lid 58401-ER Cereal Lid	£29.48 £29.48
<b>19. GLASSES WITH LIDS - 12PCS</b> 41589-22 7cm - 8cm (h)	£31.88

## Assembly Solution

Comprising of:

- 58485-00 - Cool showcase
- 58489-06 - Insert for 6 bowls
- 44995-14 - Juice Pitcher x3
- 44837-05 - Round bowls x3
- 42452-14 - Airtight cover x3



## Italian Buffet Sambonet



## Assembly Solutions

The Italian Buffets strength is it's customization. Through a series of specially shaped columns, the configuration may be organized many different ways. Build your own tailor-made buffet.

## Customisation is its strength

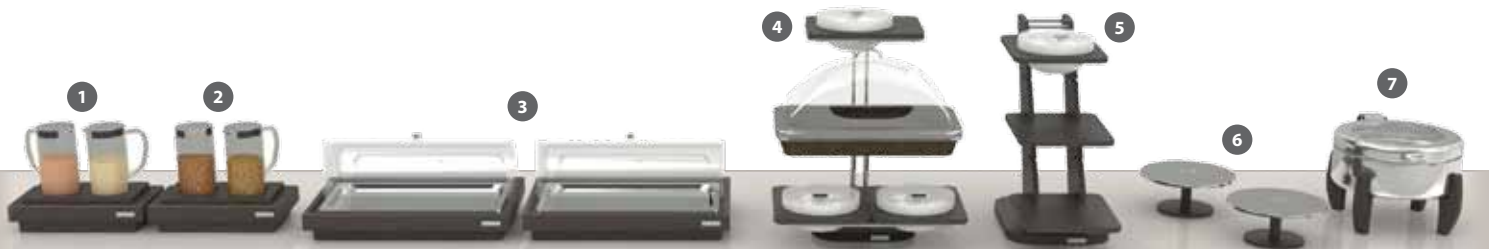
A premium customisable system for contemporary buffets & banquets



- 1 58489-00 x2  
58401-EP x2  
58401-EQ x2
- 2 58485-12 x1
- 3 58489-13 x1  
58489-10 x2  
44837-25 x2  
42452-23 x2  
42462-12 x1
- 4 58488-28 x1
- 5 58186E30 x1

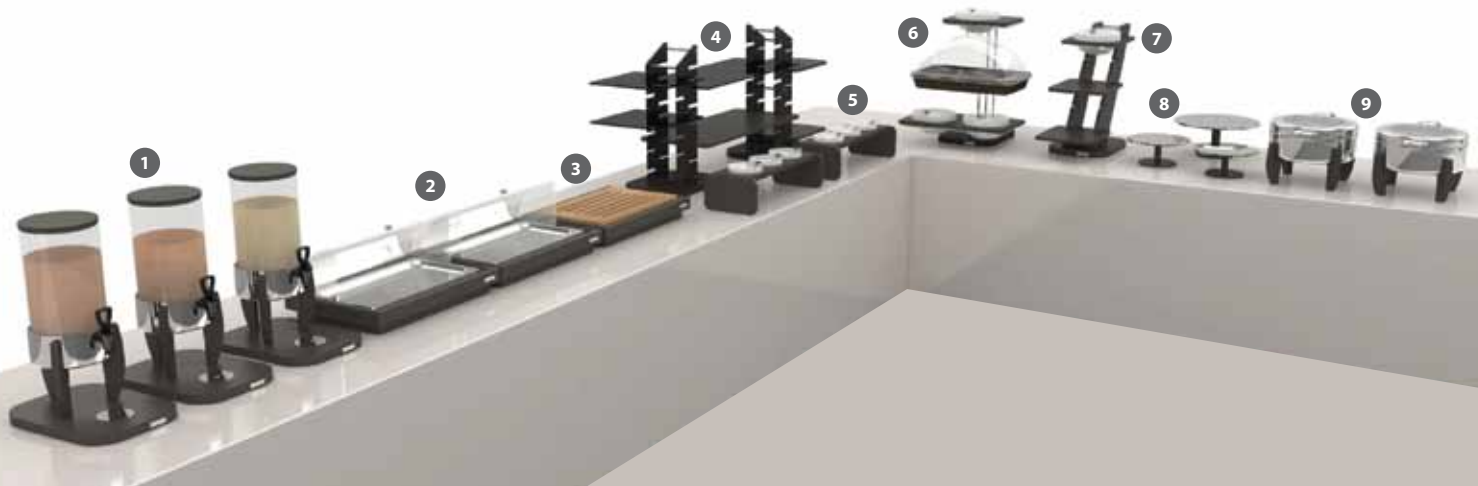
Mini

sambonet®



## Maxi

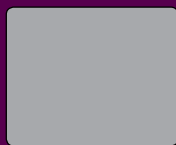
- |  |  |                      |  |   |  |                      |                      |
|--|--|----------------------|--|---|--|----------------------|----------------------|
| <b>1</b> 58489-00 x2<br>58401-EP x2<br>58401-EQ x2 | <b>2</b> 58489-00 x1<br>58401-EP x2<br>58401-ER X2 | <b>3</b> 58485-12 x1 | <b>4</b> 58489-03 x1<br>58489-10 x3<br>44837-25 x3 | 42452-23 x3<br>42461-11 x1<br>41418-11 x1 | <b>5</b> 58489-03 x1<br>58489-10 x3<br>58489-11 x2<br>44837-25 x1<br>42452-23 x1 | <b>6</b> 58488-28 x1 | <b>7</b> 58186E36 x1 |
|--|--|----------------------|--|---|--|----------------------|----------------------|



## Magnum

- |                      |  |  |  |   |  |                                     |                      |
|----------------------|--|--|--|---|--|-------------------------------------|----------------------|
| <b>1</b> 58383-07 x3 | <b>4</b> 58482-01 x2<br>58482-BB x1<br>58482-DB x1<br>58482-DA x2<br>58489-11 x1 | <b>5</b> 58484-03 x2<br>42452-14 x6<br>41405-AA x6 | <b>6</b> 58489-03 x1<br>58489-10 x3<br>44837-25 x3 | 42452-23 x3<br>42461-11 x1<br>41418-11 x1 | <b>7</b> 58482-03 x1<br>58489-10 x1<br>58489-11 x2<br>44837-25 x1<br>42452-23 x1 | <b>8</b> 58488-28 x2<br>58488-88 x1 | <b>9</b> 58186E36 x2 |
|----------------------|--|--|--|---|--|-------------------------------------|----------------------|

## Gastronorm



2/1

650x530mm



1/1

530x325mm



2/3

353x320mm



2/4

162x530mm



1/2

325x265mm



1/3

325x180mm



1/4

265x160mm



1/6

176x160mm



1/9

176x110mm

## Capacity & Length

CAPACITY - OUNCES TO CENTILITRES	OUNCE	CL	OUNCE	CL	CAPACITY - PINTS TO LITRES	PINTS	LITRES	LENGTH - INCHES TO CENTIMETERS	INCH	CM	INCH	CM	LENGTH - CENTIMETERS TO INCHES	CM	INCH	CM	INCH	CM	INCH	CM	INCH
	1	2.84	11	31.25		1	0.57		1	2.54	11	27.94		1	0.393	11	4.330	21	8.267	31	12.204
	2	5.68	12	34.08		2	1.14		2	5.08	12	30.48		2	0.787	12	4.724	22	8.661	32	12.598
	3	8.52	13	36.94		3	1.70		3	7.62	13	33.02		3	1.181	13	5.118	23	9.055	33	12.992
	4	11.36	14	39.77		4	2.27		4	10.16	14	35.56		4	1.574	14	5.511	24	9.448	34	13.385
	5	14.20	15	42.60		5	2.84		5	12.70	15	38.10		5	1.968	15	5.905	25	9.842	35	13.779
	6	17.04	16	45.46		6	3.41		6	15.24	16	40.64		6	2.362	16	6.299	26	10.236	36	14.173
	7	19.88	17	48.30		7	3.98		7	17.78	17	43.18		7	2.755	17	6.692	27	10.629	37	14.566
	8	22.72	18	51.14		8	4.54		8	20.32	18	45.72		8	3.149	18	7.086	28	11.023	38	14.960
	9	25.56	19	53.98		9	5.11		9	22.86	19	48.26		9	3.543	19	7.480	29	11.417	39	15.354
	10	28.40	20	56.80		10	5.70		10	25.40	20	50.80		10	3.937	20	7.874	30	11.811	40	15.748

## Decorating Line Thickness



Your porcelain and glass can be decorated with a line or lines in a colour or colours selected from our swatch library. Opposite are standard line thicknesses for your reference.

We decorate all products in our workshop and fire them in our kilns at temperatures ranging from 500°C to 1200°C, ensuring a vibrant and long lasting colour.

As a guide, add 25% to the product price for a line or logo.



# How to Find Us / Deliveries & Returns



## Office, Showroom & Warehouse

**The Windsor Centre, Units 7-8 Advance Road, London, SE27 9LT.**

You are welcome to visit our showroom where most of the items in this brochure can be viewed. Please call us to arrange an appointment. Alternatively, we can arrange a meeting with a member of our sales team at your premises to discuss your needs in more detail.



## How to Find Us

### By Bus or Railway

- Regular trains from London Bridge, Victoria, Sutton & Beckenham to West Norwood Railway Station.
- Buses 2, 196, 315, 432, 468, 690, N2, N68 & X68 to Norwood Bus Garage.



**ORDERLINE**  
**020 8671 5959**

## Delivery

• All orders over £150 excluding vat are FREE from delivery charges for UK mainland customers. A Standard Delivery Charge of £8.50 excluding vat will be applicable to all orders that fall below this amount.

• We offer Next Day Delivery, provided you place your order before 11am, subject to stock availability. A surcharge will be added to your order for this service.

• For Next Day Delivery please contact our offices on 020 8671 5959 so we can check stock levels and arrange this for you.

• The Lead times featured on our website for all our products are only to be used as a guide and in some cases they can of course be improved.

• In some rare circumstances, there may be an increased delay in getting your order to you, but we will endeavour to inform you as soon as possible.

## Returns

• Claims for non-receipt, discrepancies or damaged goods must be notified in writing to us within 48hrs from receipt of delivery.

• In the event that goods need to be returned, please contact us to arrange this.

• Should you wish to return any unwanted item (provided the item is in its original condition and original packaging) please notify us within 48hrs of receipt of delivery.

• Any unwanted item (provided it meets the above mentioned criteria) will be subject to a 25% restocking charge.

• We cannot accept returns of personalised items.

**1. Application of Conditions.** Unless otherwise agreed in writing by us these conditions of sale and business arrangements (which supercedes any earlier sets of conditions) shall apply to all contracts between us and our customers and shall override any terms stipulated, incorporated or referred to by the customers.

**2. Representations etc.** We shall not be bound by any oral condition, warranty; guarantee or representation made or purported to be made on our behalf unless the same is in writing.

**3. Catalogues, Price Lists etc.** All descriptions and illustrations contained in any of our advertising or sales literature are intended for information only and accordingly none of such particulars shall form part of any contract between us and a customer.

**4. Prices and Specification.** We shall be entitled to invoice goods at the prices ruling at the date of despatch and we shall charge Value added tax at the rate prescribed at the date of invoicing, and any other tax or duty based on or related to the supply of goods or services or turnover whether or not included in any quotation or invoice for which we may be liable in respect of any contract. Sizes, capacities and colours are descriptive only but are accurate within the normal standards applicable in the industry.

**5. Passing of Risk.** The risk in the goods contracted to be sold by us shall pass to the customer when the goods are delivered to the customer in accordance with the customer's instructions.

**6. Passing of Property.** Notwithstanding the preceding clause, the property in and title to the goods contracted to be sold by us shall only pass when full payment has been made for such goods.

**7. Terms of Payment.** All First orders are to be paid on pro-forma basis prior to receipt of goods and thereafter a 30 day account may be opened subject to bank and trade references. All goods should be paid for 30 days after invoice unless otherwise agreed. If payment terms are not adhered to we reserve the right not to supply goods or carry out repairs subject to warranty.

**If maturity is overdrawn, interest will accrue at the rate of 2% per month.**

**8. Complaints Following Delivery.** Subject as aforesaid, the customer shall immediately on their arrival unpack and inspect goods and give a clear signature. All claims must be made within 3 working days of delivery. If the customer fails to such notice we shall be entitled to assume that the goods are in all respect s in accordance with the contract and that the customer shall be bound to accept and pay for the same accordingly. If the customer shall make any complaint within the time stipulated we shall, after we have had reasonable time to investigate the same be entitled at our option;

A) To replace goods (if defective) or B) To accept the return of the goods (if defective) and credit the customer with the price thereof.

A re-stocking charge of 25% will be applicable to any goods returned with prior consent from La Porcellana Ltd. Return charges may also apply. Decorated items cannot be returned.

**9. Insolvency.** If the customer, being an individual, shall at any time become bankrupt or shall have a receiving order or administration order made against him or shall make any composition or arrangement with his creditors or, being a company, shall enter into liquidation, have a winding up order made against it, or have appointed a receiver if its assets income or any part thereof we shall be entitled forthwith to determine any contract then subsisting by giving written notice to the customer's last known address. Any such goods then in possession of the customer (if not paid in full) shall forthwith be returned to us or (at our option) made available for collection by us and we shall have the right to enter on the premises of the customer to collect such goods.

**10. Force Majeure.** If the performance of any contract between us and a customer shall be rendered impossible or affected in consequences of any inability to secure labour, materials or supplies, Act of Government, war, riot or civil commotion, strike. Lock-out, fire, flood, drought, or other cause (whether or not similar in kind to all or any of the foregoing) beyond our control, we shall be entitled (without prejudice to any of our other rights against the customer) by notice in writing to rescind the contract or to elect or impose such variation in the contract as may in our opinion be necessary.

**11. Legal Costs.** We reserve the right to charge any legal or other costs incurred collecting outstanding accounts.

**12. Effect of Headings.** The headings in these, Condition of Sale and Business arrangements, are included for convenience only and shall not in any way affect their interpretation.

**13. Samples.** Any sample goods delivered to a customer shall be returned by the customer to our premises within 14 days of delivery. Otherwise goods will be charged to the customer at the prices ruling at date of the original despatch.

**14.** The Company will not accept the return of any goods not stocked by ourselves that have been ordered on behalf of customers unless they are found to be defective.

All prices in this catalogue are exclusive of VAT

LA PORCELLANA Ltd. Registered in England No. 1465935 VAT Reg. No. GB 451 1840 72



# Notes

A series of horizontal dotted lines for writing notes, starting below the 'Notes' header and extending to the bottom of the page.



# Our New Website

# CHEFPREP

PROFESSIONAL KITCHEN EQUIPMENT, KNIVES & UTENSILS

Our New Kitchenware Website  
[www.chefprep.co.uk](http://www.chefprep.co.uk)

In our 2019 - 2020 brochure we have carefully selected a choice of premium tableware that is both price conscious and superior in quality. With this in mind, our philosophy is to offer the chef and back-of-house the same outstanding value and quality on our kitchenware website.

We look forward to doing business with you on our new venture and aim to provide the Restaurateur and Hotelier the same high level of customer service experienced with La Porcellana.

Don't forget!...you can browse our tableware website '[www.laporcellana.co.uk](http://www.laporcellana.co.uk)' where you will be able to order online. Alternatively, for more information on your product, call our sales team on 020 8671 5959.





Visit our Kitchenware Website

**CHEFPREP**

PROFESSIONAL KITCHEN EQUIPMENT, KNIVES & UTENSILS

[www.chefprep.co.uk](http://www.chefprep.co.uk)

**LA PORCELLANA**  
CHINA GLASS CUTLERY  
[www.laporcellana.co.uk](http://www.laporcellana.co.uk)



The Windsor Centre · Units 7-8 Advance Road · London SE27 9LT  
t: 020 8671 5959 e: [info@laporcellana.co.uk](mailto:info@laporcellana.co.uk)