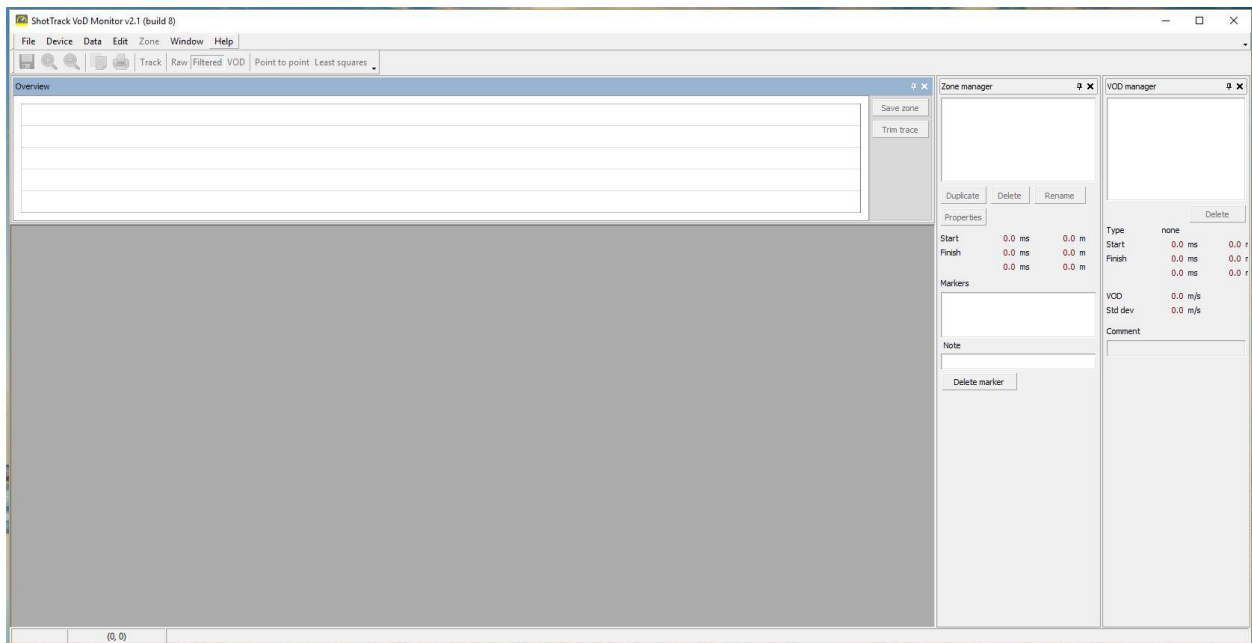


ShotTrack VoD Monitor



VoD305 Unit Set-up Guide

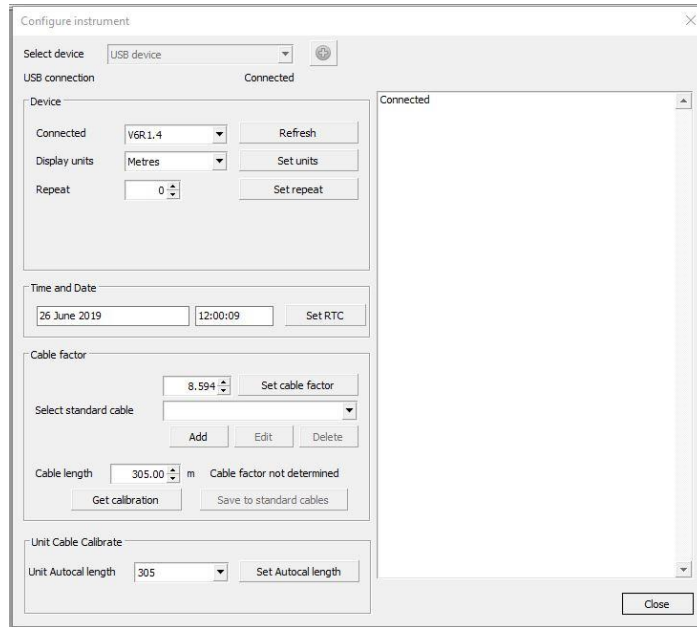
Open VoD Monitor software



Clicking on Device will connect to the unit automatically when using the USB connection or you will have to choose the unit if using the Bluetooth connection.

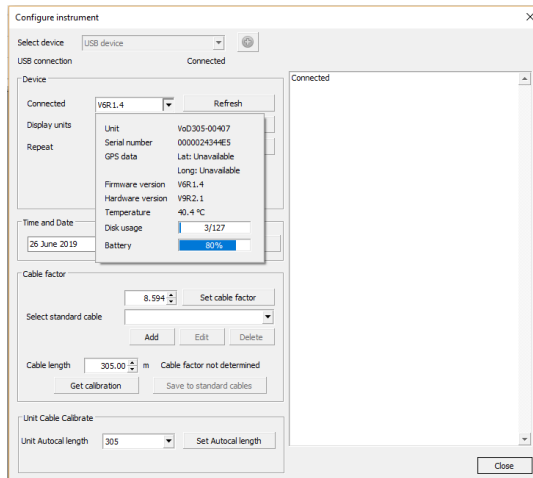
The unit will have needed to be paired to the PC before Bluetooth connection can be used.

This screen is used to check the Battery condition, disk usage, version and revision of the software.

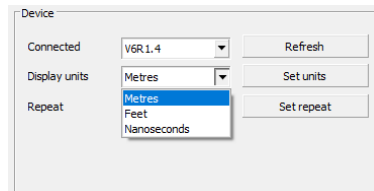


The first set of information is contained in the drop-down box to the right of the Connected label.

It has information from the unit connected to it.



The next drop-down box to the right of the Display units label allows the user to select how the length is displayed on the unit.



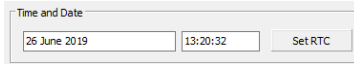
Choosing an option and pressing Set units will configure the unit.

The next option is the repeat function. This is only available to customers who especially request this function. It is not expected that a normal user will ever need to set this option.



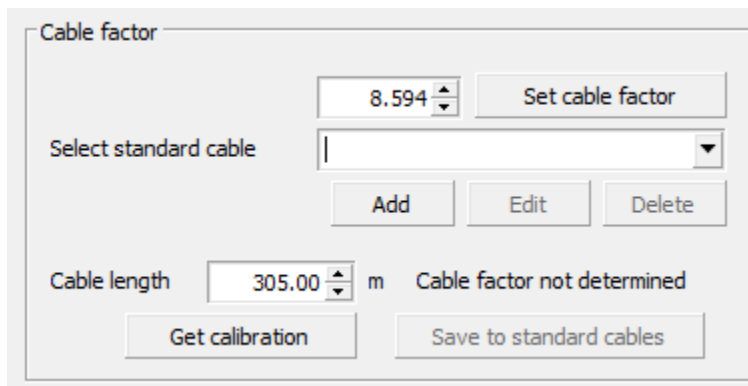
This is intended solely for testing of short column lengths of product at a test facility where several shots can be prepared in advance and the tests are to be conducted at discrete periods. When the repeat number is incremented, and the Set repeat button pressed the unit will not shut down as normal after a trigger, it will reset itself after each shot until the repeat number has been reached. To enquire how to access this function please contact ShotTrack at info@shottrack.com.au

Time and Date *(Firmware V6 and upwards only)*

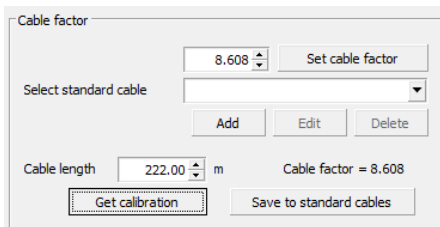


The current unit time and date is displayed here as a local time, if it is different from the correct time, pressing Set RTC will update the on board RTC to this time. This is useful when the unit is being used underground and the RTC cannot be updated by GPS.

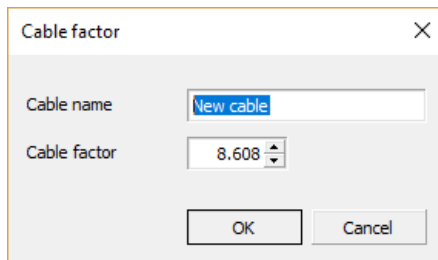
Cable Factor calculations *(This option is only available when connected using USB)*



Connecting a known length cable to the unit, allowing the unit to reach full working temperature the cable factor can be calculated. Change the Cable length value in the box to the correct length and then press Get calibration.



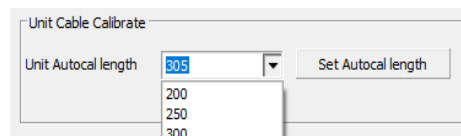
The new calibration factor is displayed, and the result is shown in the Set cable factor display box. Pressing the Set cable factor button updates the unit with this value.



If Save to standard cables is pressed, then this dialog opens, and you can add the cable to the standard cable list.

It is strongly suggested that when a new cable is used then a new cable calibration is done for that cable in conjunction with that unit to ensure the best accuracy possible.

Unit Cable Calibrate *(Firmware V6 and upwards only)*



Unit Cable Calibrate is the control to set the VoD305 units default cable calibration length. Once you have identified which cable length your supplier uses as a standard then this value can be entered so that on site “easy calibration” can be done without connecting to the software. Previously the standard cable reel available was nearly always 305 metres (1000ft). However now there are different standard lengths available, so we have added the option to change the default. It is essential that when calibration is done that the correct length is used.

