

Reborn Launch Tower Installation Guide (for General Models)



This installation guide is only a guideline. Drilling tool is needed for installation. All hardware is to be hand tightened. Do not use air tools or electric drills to tighten hardware. Inspect if any parts are damaged or missing before installation.

Please remove the rubber caps of each leg, it is packaging material which **MUST NOT** be used for installation, or it will lower the tower strength.

SEAMAX
Adventure On Water



4 x M6 Bolts
already install in fittings



8 x M12 Short Bolts



4 x M12 Long Bolts Deck



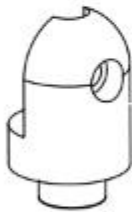
12 x Splt Washers



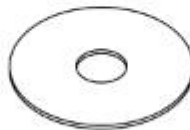
4 x small Nylon washer



4 x M12 Locking Nut



4 x Open Hole leg fittings



4 x Nylon deck Plates



4 x Large 70mm Alloy plates



4 x Flat Base Deck Mounts



Reinforcement Backing Plates



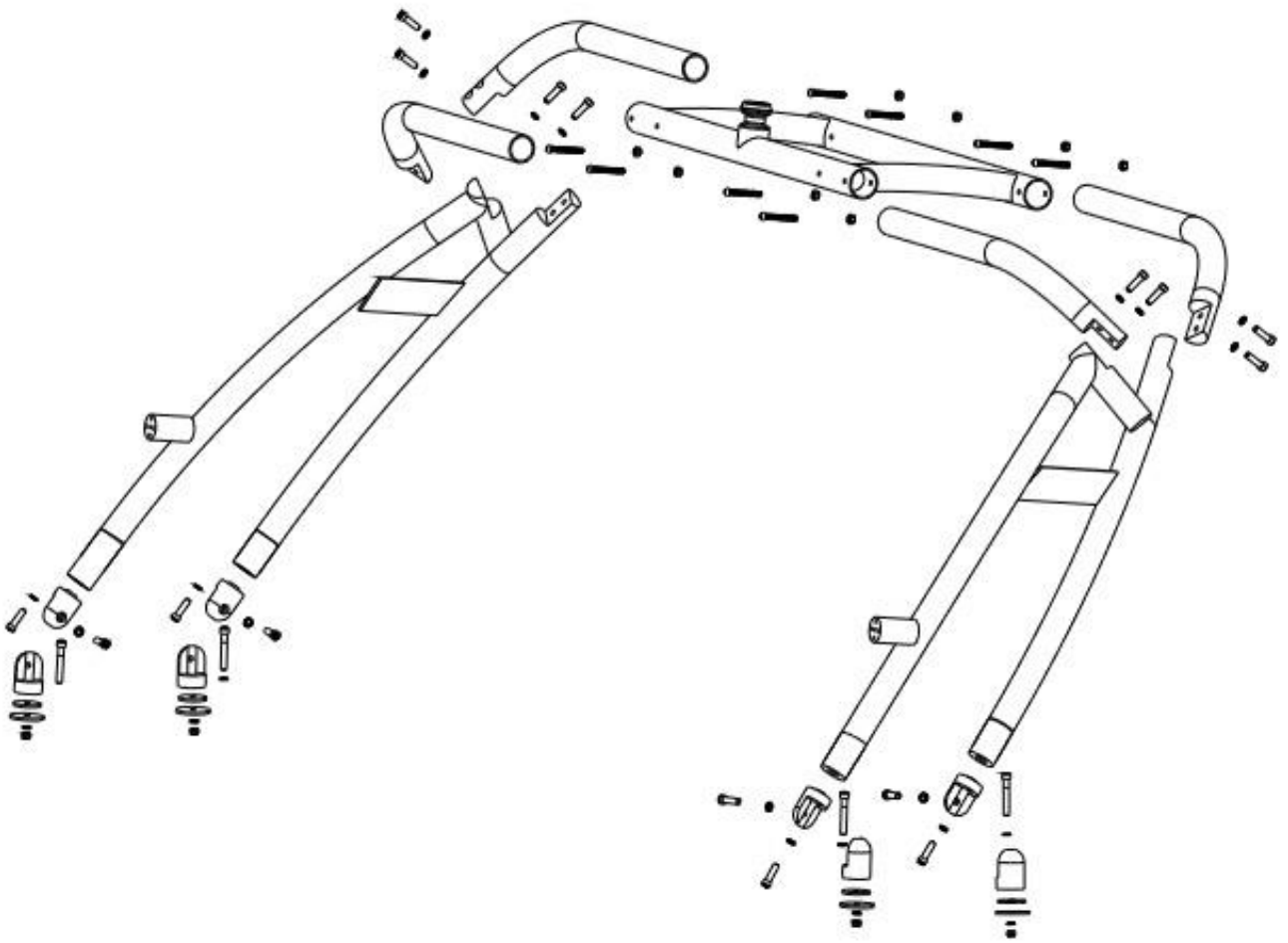
4 x Long Dome Head bolts
4 x Nuts for long bolt
bolts and nuts of top
section drilling and bolt.

Begin Installation

During installation, you should protect the tower by doing all the layout of the tower on a tarp, blanket or carpet and leave as much plastic wrapping on the legs and top section as possible. Protect the general mounting area of your boat by covering it with a tarp or blanket. Use masking tape to protect your deck from scratches as you determine the location of the four bases.

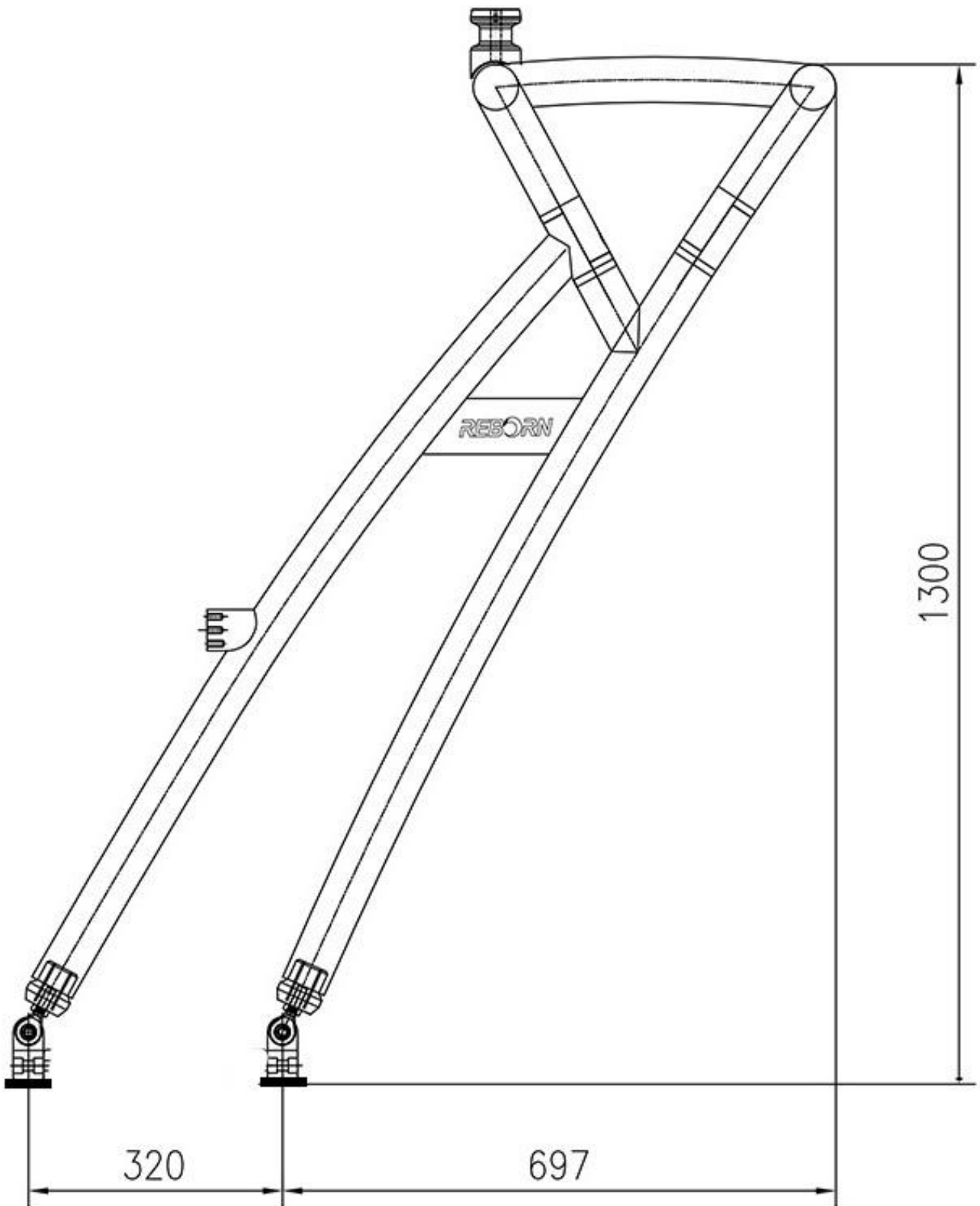
STEP 1:

Studying the exploded drawings and learn the structure of this tower.



STEP 2:

Using the measurements from the elevation drawing identify where the best place is to fit the tower on your boat.



STEP 3: Assemble the Side Support Frame

Attach the deck mounts onto the boat. Cover the area where the base mounts will be placed with masking tape. This should be done in all areas where the tower will be mounted and the near surrounding area. This will help eliminate scratches to your boat while adjusting and measuring your tower attachment points.

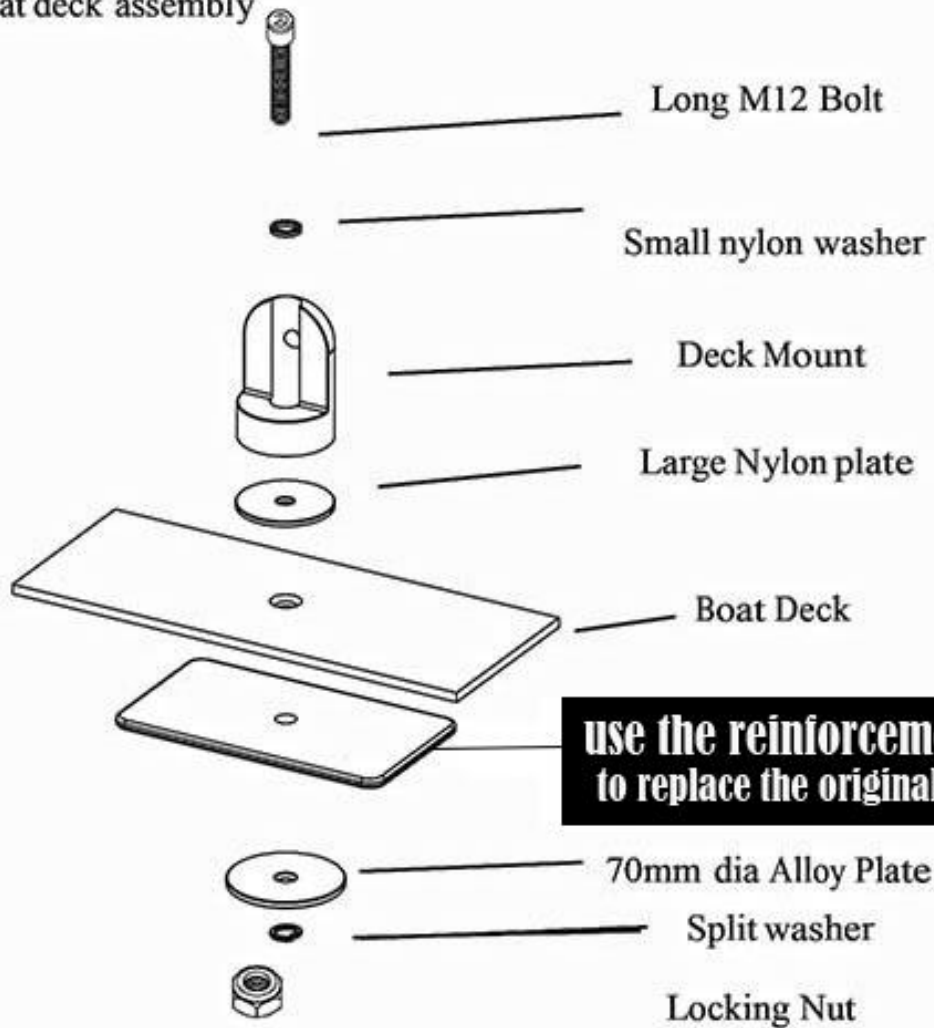
Note the Flat base of Deck Mounts

Note the M12 hole through the center

Note the threaded hole in the Fitting

DECK MOUNTS TO BE PLACE ON FLAT SURFACE....

Flat deck assembly



DO NOT USE RUBBER PADS - HARD NYLON DIRECT ONTO FLAT SURFACE

Note that we supply 2x long reinforcement backing plates, put them at each side under the boat deck as per above drawing, it will grab the tower firmly and stop movements.

The tower can be side mounted or on top, if you do a side mount, please make sure you place the deck mounts up as high as possible on a flat surface of the side, put the hard nylon plate between the mount and deck, this will ensure the tower easy to fold.

Warning: Before drilling into your boat, please check that you have clear access to the area beneath and that no objects, wires, or other hazards are present.

Tip: Do not measure from windscreen, cleats or vents. These reference points are not always square and in the same position as the opposite side of the boat. It's the best to use the front of the boat as the reference point, the top edge of the deck mount, or similar measurement points whenever possible. Always triple-measure and check before drilling.

Tighten the deck mounts firmly so that the mounts will rotate under pressure while turning the mount with the leg attached (note the mounts will be very hard to rotate by hands)

Note: You can use the quick release knob either front or rear according to your convenience.

STEP 4

Attach the legs onto the deck mounts. All feet are swivel and can work with various mounting angles.

STEP 5

Slide left L arms into H top section, use the supplied protective sleeve to prevent scratches. Then connect the other end of L arms to the legs. You may need one person to hold the H bar at this stage.

NOTE: When you have a narrow boat you probably need to shorten the overhead bar to make the tower fit to your boat before Step 5.

STEP 6

Repeat step 5 for the right arms.

Important: before you connect the right L arms onto the legs, double check if the tow point is in the center of the tower.

Drill through the predrilled holes in the center section from each side with size 10 drill bit and install bolts and cap nuts. Please note that you need to drilling holes on the Top section after you confirm the exact measure it can fit on your boat and tighten with M10 x 75 bolts and nuts. One person will still be stabilizing the tower through this step. Recheck if the tower is installed symmetrically and tighten all hardware for completion of tower installation.

STEP 7

Double check If the tower is in the correct position, and you can fasten all the bolts and screws.

How To Fold the Tower

1. Disconnect the Quick release knob of each rear legs from the deck mount.
2. Press the tower forward of your boat slowly, the hard nylon plate under the tower mount will allow the bracket rotate and lower the tower.



Care and Maintenance

1. Be sure to check and retighten all bolts and connections prior to every use.
2. Be cautious when towing or driving under obstacles, low hanging structures or trees with your tower mounted.
3. When the tower is folded, always use a vest or other cushion to protect your boat where the tower and boat touch each other
4. Use soap and water or general cleaners to clean your tower. Avoid abrasive materials that might scratch the tower's surface.
5. Always rinse tower after touching salt(brackish) water.

IMPORTANT NOTE FOR INSTALLATION

The construction of your boat, design of the deck, thickness of deck and walls and overall design may cause movement at the mounting points. If the construction of you boat causes movement at the mounting points or incorrect mounting location creates added pressure on joints increasing movement of the tower it voids warranty. If in doubt do not install the tower or seek a professional to install for you.

Always read the warning labeled on the tower prior to each use.

WARRANTY

Dolphin T Tops warrants the product (not including other 3rd party accessories) against manufactures defects. To claim you must contact Dolphin T Tops or is Distributor. The product/part is to be sent to the Distributor for inspection where it will either be repaired or replaced. (Unless otherwise agreed in writing) The customer is liable for costs associated in shipping the product/part to Dolphin T Tops.

Dolphin is not responsible for personal injury or damage to the boat caused by the use of the t top or any transport charges or cost of installation or removal of the t top. Dolphin is not liability for direct or indirect or consequential damages resulting from delay or improper installation.

Warranty does not cover anodized, polished or powder coated surfaces as well as any hardware corrosion they are specially excluded as their care and use cannot be controlled by Dolphin.

Warranty does not cover the spider coat gel cracking or damage from the installation or use of the t top on your boat. No dealer, retailer or manufacturer is the agent and may not assume any liability in connection with this warranty. This warranty is in lieu of all.

The construction of your boat, design, thickness of floor deck and walls and overall design may cause movement at the mounting points. If the construction of you boat causes movement at the mounting points or incorrect mounting location creates added pressure on joints increasing movement of the t top it voids warranty. If in doubt do not install the t top Check all bolts and parts prior to use, especially after towing behind a vehicle, lowering and raising after storage.

Do not stand, climb or jump o# tower, do not tow the boat behind a vehicle with the t top lowered. Do Not Ski, wake, tow tubes, boats or another watercraft from the tower. Watch out whilst moving under objects, such as bridges, low building and trees

CANOPY IS RATED FOR UP TO 45 MPH.

For Safety Reason, please remove canopy when driving above rated speed.

Distributor - Seamax Marine & Outdoor

102 - 19155 38 Ave, Surrey, BC, Canada V3Z 0Y6

www.seamaxmarine.com 1877-907-7766

SUPPORT@SEAMAXMARINE.COM