

Place the pump upside down on a pad or soft surface.

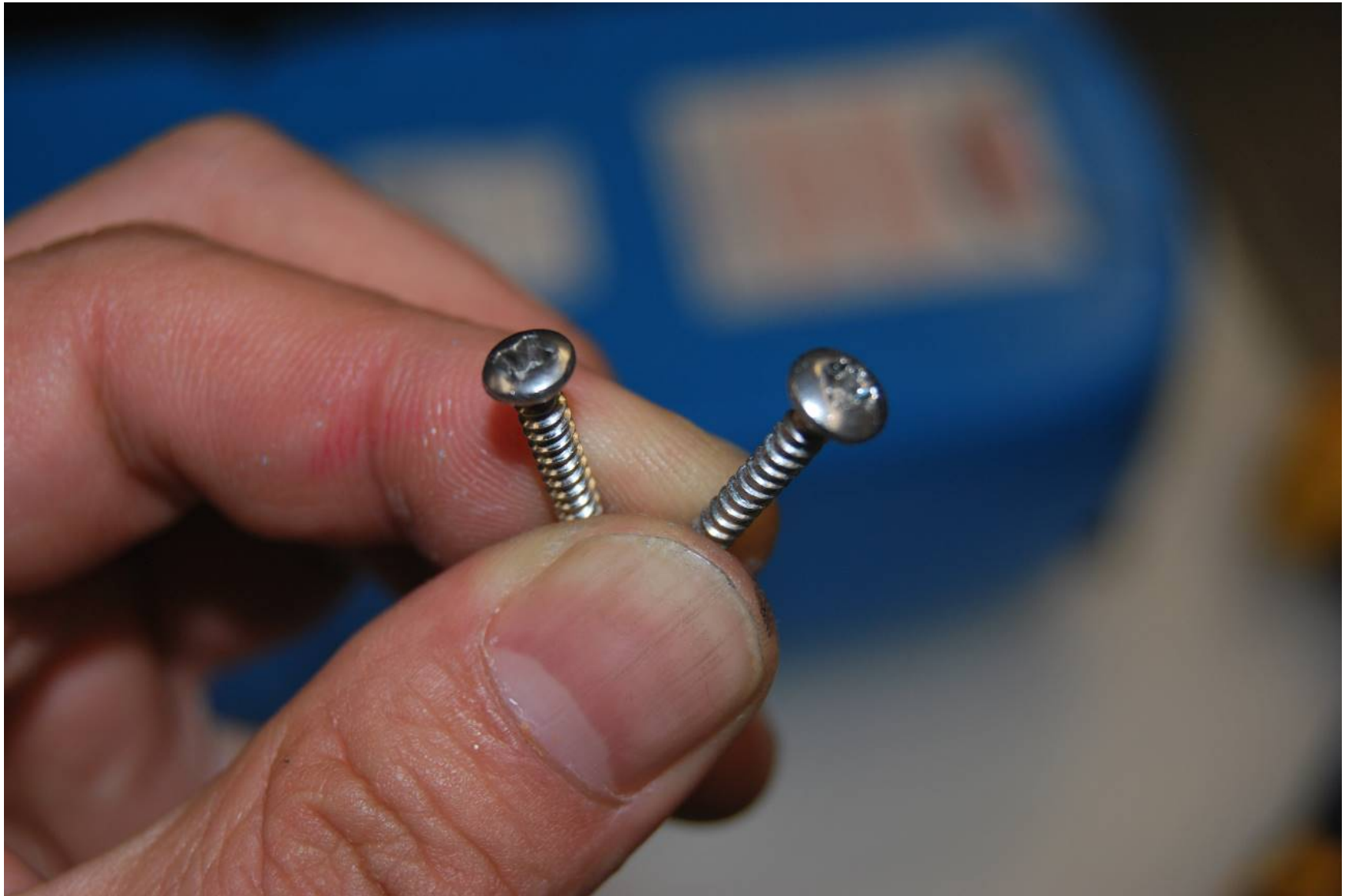


If this is the 80DB mode, remove the screws from the 4 holes of battery box. For 2016 or early models, please note the smaller size of the screw head and don't mix with the pump main housing screws.





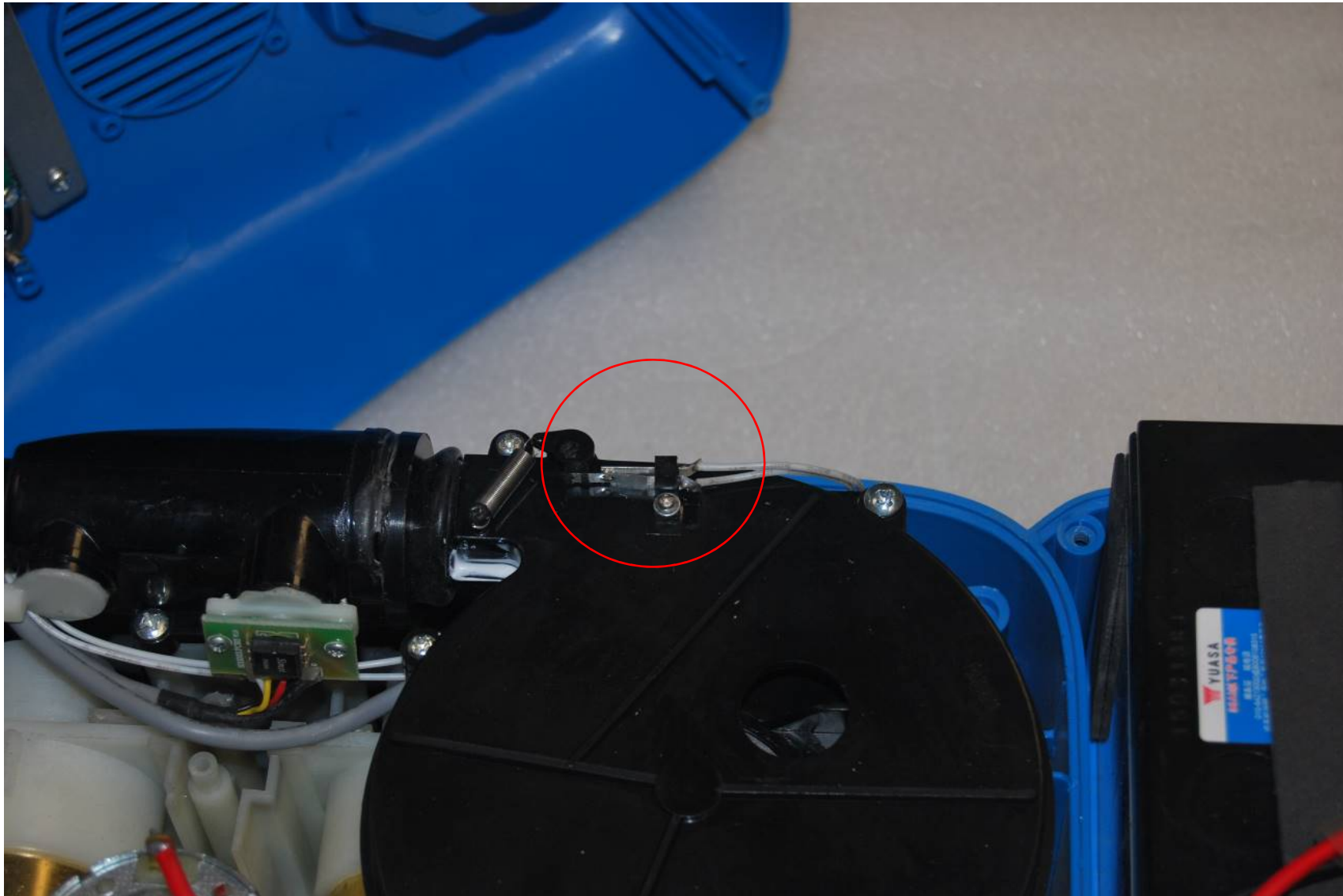
Identify the two type screws. Do not mix the screws since their sizes are different.



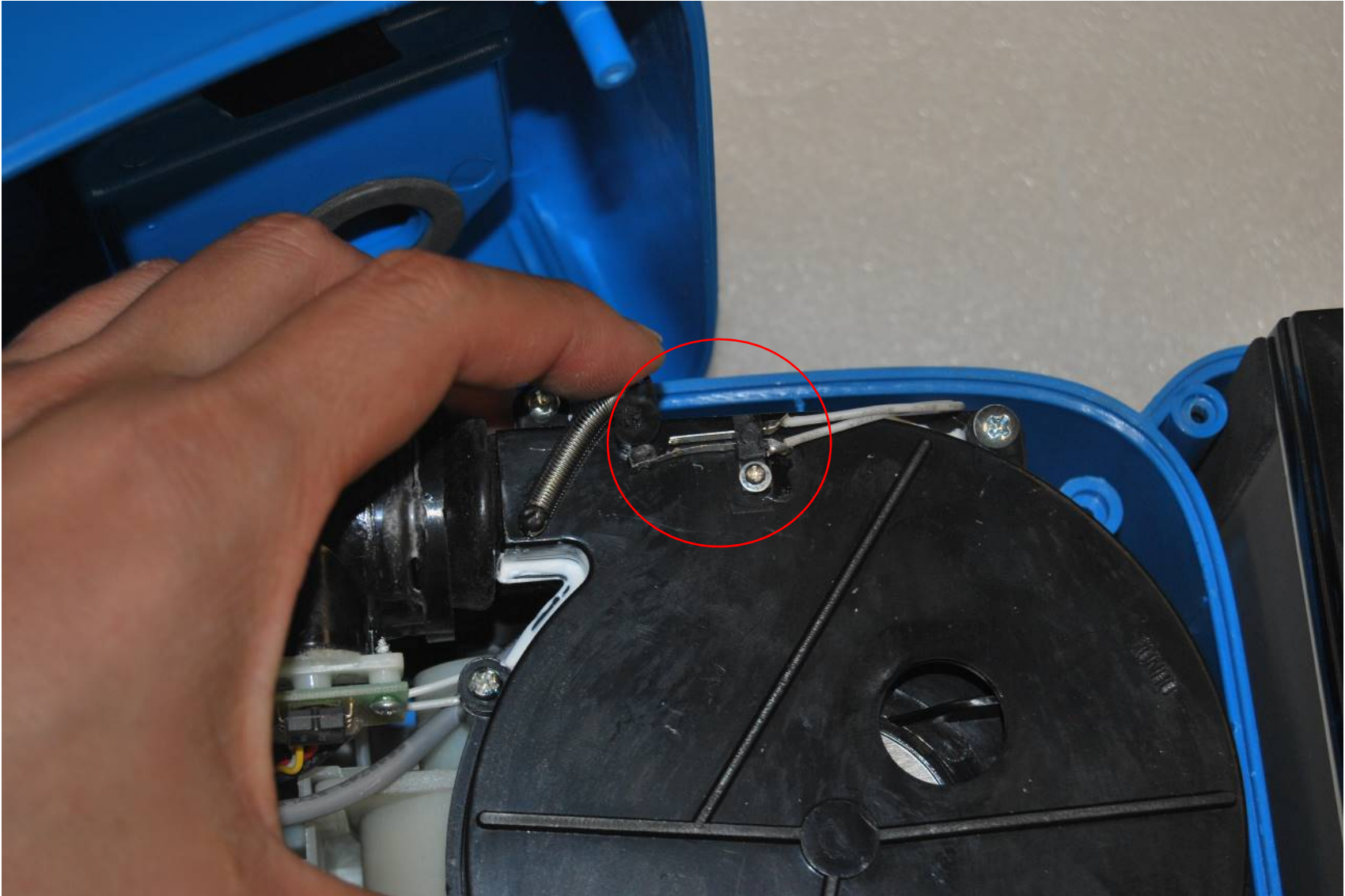
Open the battery box shell, and then open the pump shell.



Locate the spring load control contact switch arms on top of the black pump turbo fan. The 2 contact switch arms controls the pump switching from 1<sup>st</sup> stage to 2<sup>nd</sup> stage. Moved by a manual Air Flow valve.



When the pump running at 1<sup>st</sup> stage (high Volume stage), the air flow will push and keep the 2 contact switch arms open. The valve will be closed when pumping pressure equals to chamber pressure.



When the fan is not turned on, or 1<sup>st</sup> stage can't pump more air, the air flow valve is closed. The 2 spring load switch arms will be closed and connected to each others.

If the fan has an issue of 2<sup>nd</sup> stage, including starting the 2<sup>nd</sup> stage too early, or not switch to 2<sup>nd</sup> stage, please check the pointed air flow valve & spring load switch illustrated on the photo. If the position is not right, please adjust the position by gently bending the one switch arm either left or right.

