



MARK BAIGENT | SIZECHART

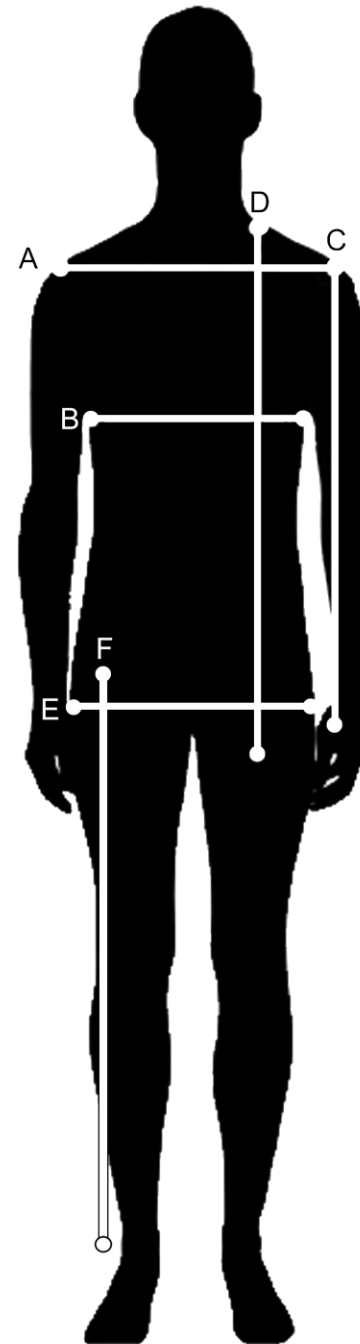
Please note that measurements are only to be considered as a guide. Factors like cut, fit, constructions can all affect measurements and make the garment fit larger/smaller than the measurements can suggest.

All measurements are taken from our staff of on garments in the store. All measurements are taken and displayed in centimeters.

When unsure, just send us an email. We are always happy to help.

SIZE	A	B	C	D	E	F
XS	44	98	90	90/95*	100	100
S	45	100	95	94/99*	105	105
M	46	102	100	98/103*	110	110
L	47	104	105	102/107*	115	115
XL	48	106	110	106/111*	120	120

*PLEASE NOTE, the double displayed measurements are front and back length



SHOULDER WIDTH | A

Shoulder seam to shoulder seam.

CHEST CIRCUMFERENCE | B

Around the chest.

SLEEVE LENGTH | C

Outside shoulder seam to cuff.

TOP LENGTH | D

From collar base to hem.

HIP | E

Widest part of the hip.

BOTTOM LENGTH | F

From hip bone to ankle.