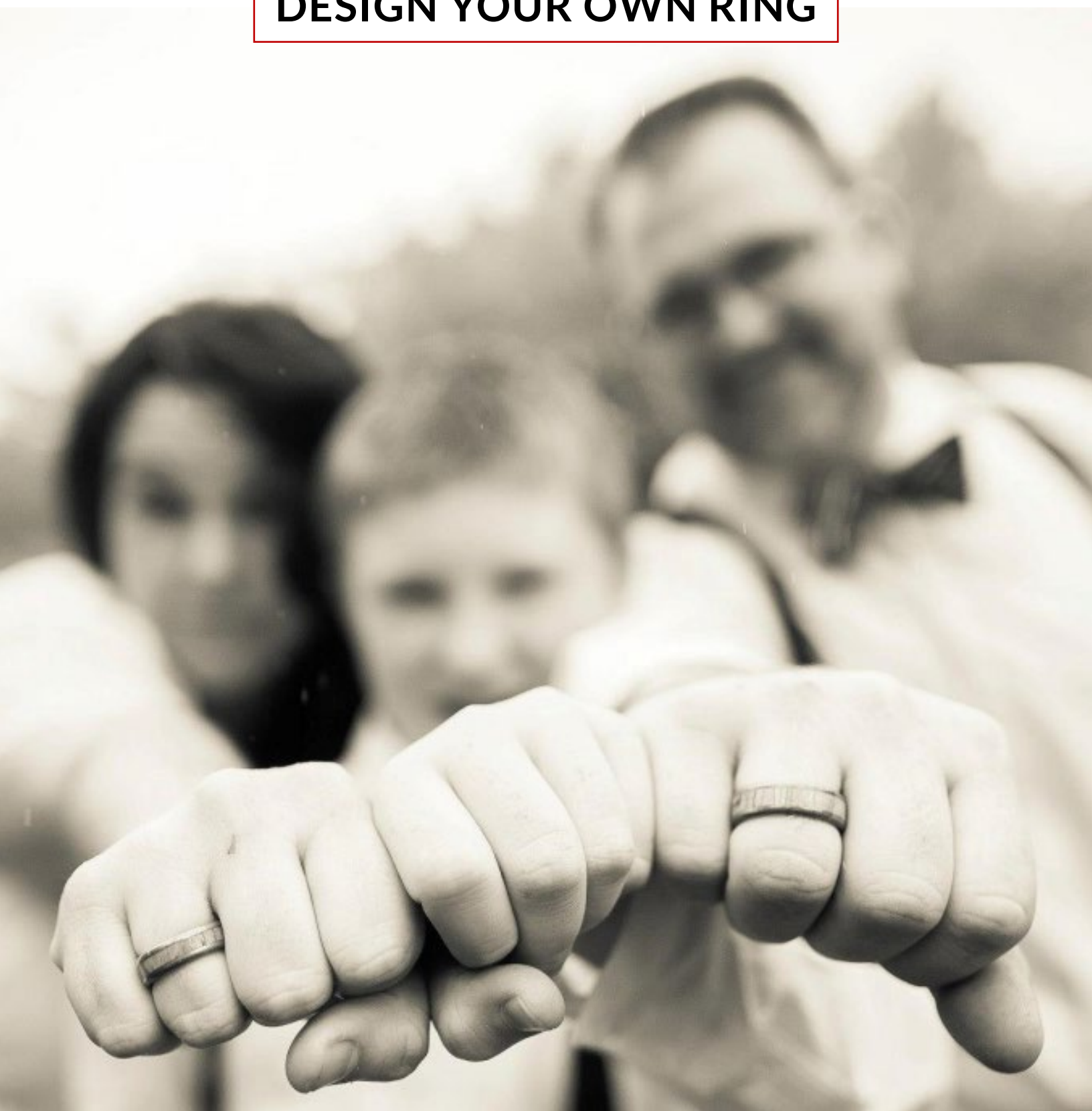


Minter & Richter

DESIGN YOUR OWN RING



# 1

## BASE MATERIAL

### Titanium

100% pure commercial grade titanium, 100% hypoallergenic .



### Inox

If you are looking for a whiter, brighter color in your base metal to match a platinum or white engagement ring, Inox Stainless Steel is an excellent choice. Slightly heavier than titanium, Inox is equally durable. An additional \$65 per ring. (\*\* Inox Stainless Steel cannot be anodized.)



# 2

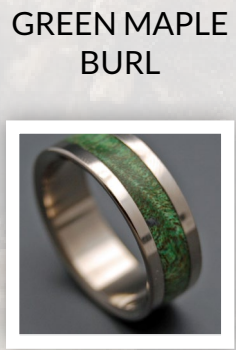
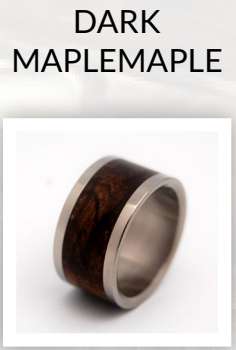
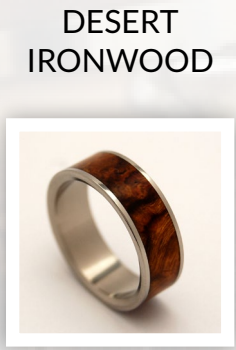
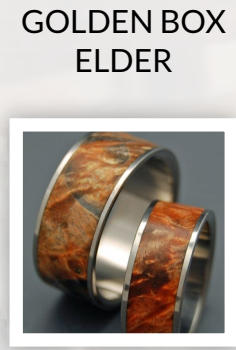
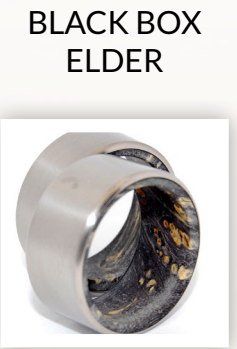
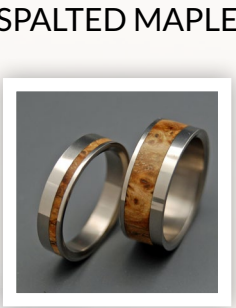
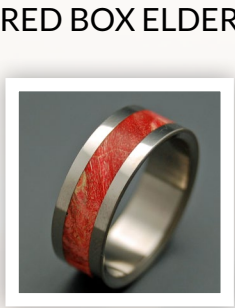
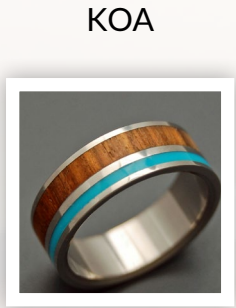
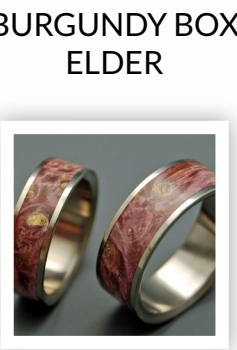
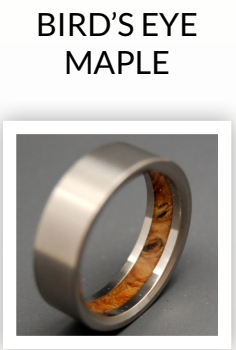
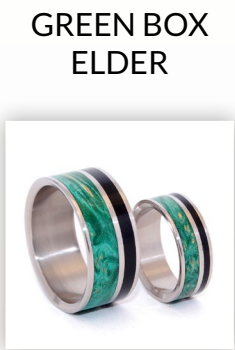
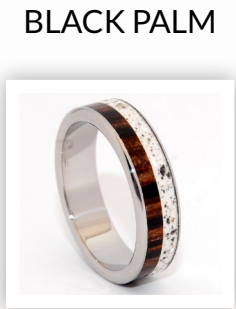
## INLAY MATERIAL

### Hardwoods

From the exotic to the everyday, each hardwood inlay is wondrous and inspiring, unique to your very ring. All of the wood we use is ultra-stabilized under a patented high pressure process and impregnated with acrylics, making it resistant to water and scratches. If you do not see a particular wood below, just ask!

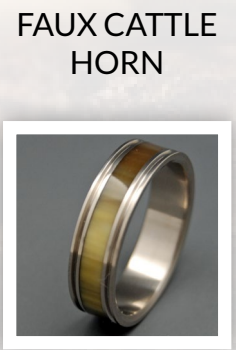
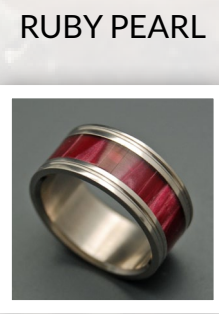
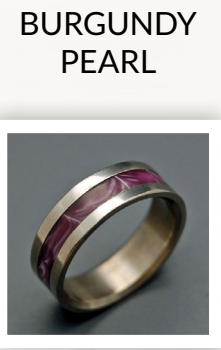
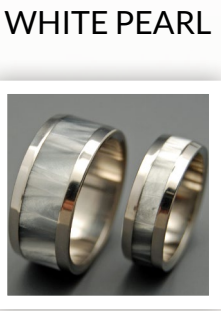
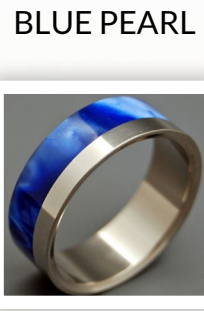
CHERRY	TULIP WOOD	BLUE BOX ELDER	CALIFORNIA BUCKEYE (DARK)	OLIVE WOOD
				
ANCIENT KAURI	BROWN BOX ELDER	ROSEWOOD	LIGHT COCOBOLO	GABON EBONY
				
CLEAR BOX ELDER	MACASSAR EBONY	AMBOYNA BURL	BLOODWOOD	BLUE MAPLE BURL
				





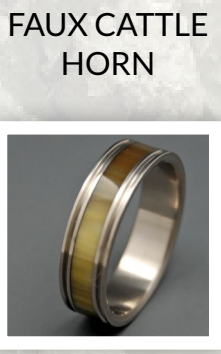
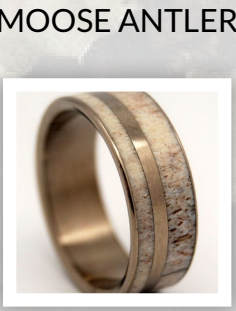
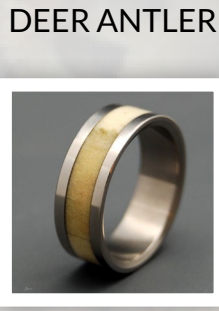
## Opalescents

Cast polyester is 100% waterproof and extremely durable. Our opalescent inlays feature several different formulas, including Pearl, Sparkle, Marble and Transparent.



## Horn

Durable and waterproof, horn is a natural pick when it comes to inlays. All of our horn is responsibly sourced.





Concrete

Concrete is both modern and timeless, with unlimited possibilities in style, texture and color. Super durable and 100% waterproof, our concrete inlays are made to last a lifetime and beyond. Choose light or heavy aggregate.

WHITE



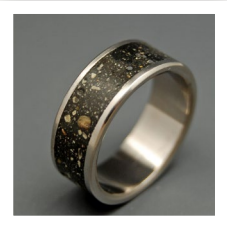
BLUE



RED



BLACK



GREEN



NATURAL



BLUE GRAY



Composite Stone

Engineered stone is a composite material made of crushed stone bound together by a polymer resin.

TURQUOISE (WEBBED)



JADE



CHAROITE



TURQUOISE (PLAIN)



MALACHITE



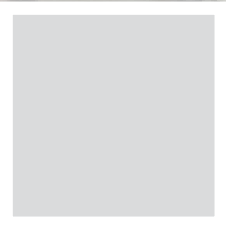
AZURITE



GASPEITE GREEN



SODALITE



TIBETAN TURQUOISE



M3

M3 is short for Macro Molecular Metal and is made up of metal that has been deconstructed to the macro molecular level, re-alloyed and then reconstructed, creating a completely new metal composite material. The Mokume line of M3 Metal is a modern interpretation of an Ancient Japanese method, melding metals to create organic patterns of marbled grain and burl. Originally created in 17th century Japan as adornment for samurai sword handles and sheaths.

BLACK & WHITE



BLACK & GOLD



CLASSIC



BLUE BRONZE SILVER



BLACK & RED



Other Metals

As an accent or full overlay brass and copper have the ability to add warmer tones to a durable titanium foundation.

COPPER



STRESSED COPPER



BRASS



BRONZE



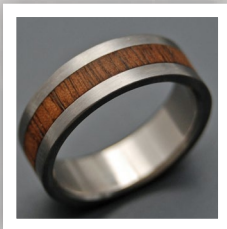
3 FINISH

The finish is the final step in ring production, and refers to the method by which the ring's surface is polished or brushed to give it a certain effect. Reflective, dark, matte or textured, a finish can highlight a ring's best features.

MIRROR



SATIN



SANDBLASTED



WIRE WHEEL



GLASS BEAD



# 4

## ENGRAVING

Engraving is \$40 for the first 30 characters and .80 cents for each additional. BLOCK CAPS, Basic Upper and Lower Case and Script are recommended. Please submit a high resolution .jpg image (at least 300 dpi) for symbols.

SAMPLE IMAGE



SAMPLE IMAGE



# 5

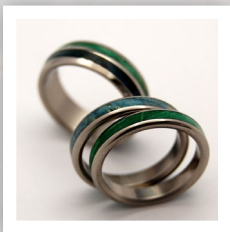
## ENGAGEMENT | WEDDING RING SETS

Flawlessly combine your engagement and wedding bands with these stackable sets. Works best with double inlay bands.

SAMPLE IMAGE



SAMPLE IMAGE



# 6

## COLOR

Anodization is the process that produces those fabulous accent colors you see on our bands. By passing electricity through titanium in a conductive bath, a transparent titanium-oxide layer is formed on the band's surface. The amount of voltage in the bath determines the thickness of the oxide and color produced. Each iridescent color is seen through the refraction of light on the transparent oxide layer. Because the colors are optically created, they may look different depending on the time of day, viewing angle and light source.

Anodization is not permanent, and will eventually fade and wear over time. This is why we only anodize on the interior and protected groove of our bands. If you ever feel like your ring could use a new blast of color, we will be happy to re-anodize it for you free of charge, as part of our spa treatment guarantee.

BRONZE



GOLD



WINE



PURPLE



ELECTRIC  
PURPLE



SAPPHIRE BLUE



OCEAN BLUE



PINK



SUNSET



TURQUOISE



GREEN



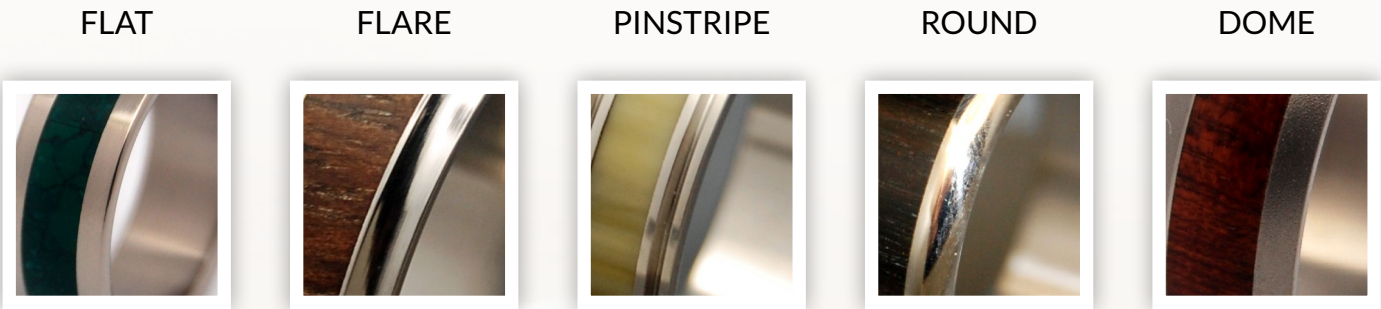
Anodizing Key | This is the spectrum in which the colors appear.





7  
EDGE TREATMENT

Find the perfect frame for your ring. Choose from our varied edge treatments to reflect your own personal style. (All of our rings are relieved on the interior edge for a comfort fit.)



8  
VARIATIONS

Double Inlay



Interior Inlay



CUSTOM ORDER

Name		Wedding Date:	
Phone		/	
Email		Latest Must Have By Date:	
Delivery Address		/	
		RING ONE	RING TWO
RING SIZE			
<div><div>Size 5</div><div>Size 6</div><div>Size 7</div><div>Size 8</div><div>Size 9</div><div>Size 10</div><div>Size 11</div><div>Size 12</div><div>Size 13</div></div>			
RING WIDTH			
<div><div>3.5mm</div><div>4.8mm</div><div>5.6mm</div><div>6.4mm</div><div>7.9mm</div><div>9.5mm</div><div>11mm</div></div>			
RING SIZERS			
Would you like Cusotm Aluminium Sizers? We will send you a range of three sizes at each person's chosen ring width for you to try until you feel confident in your choice.		YES	NO
NUMBER OF INLAYS			
INLAY MATERIAL(S)			
EDGE/BEVEL			
Flat, Fully Rounded, Sharp Bevel, Pinstriped.			
FINISH			
Mirror, Satin, Glass Bead Blasted, Sand Blasted.			
ACCENT COLORING			
ENGRAVING PHRASE			
NOTES		RETURN TO US	
		Email: sales@minterandrichterdesigns.com	
		We'll contact you to finalize your custom ring design and order.	