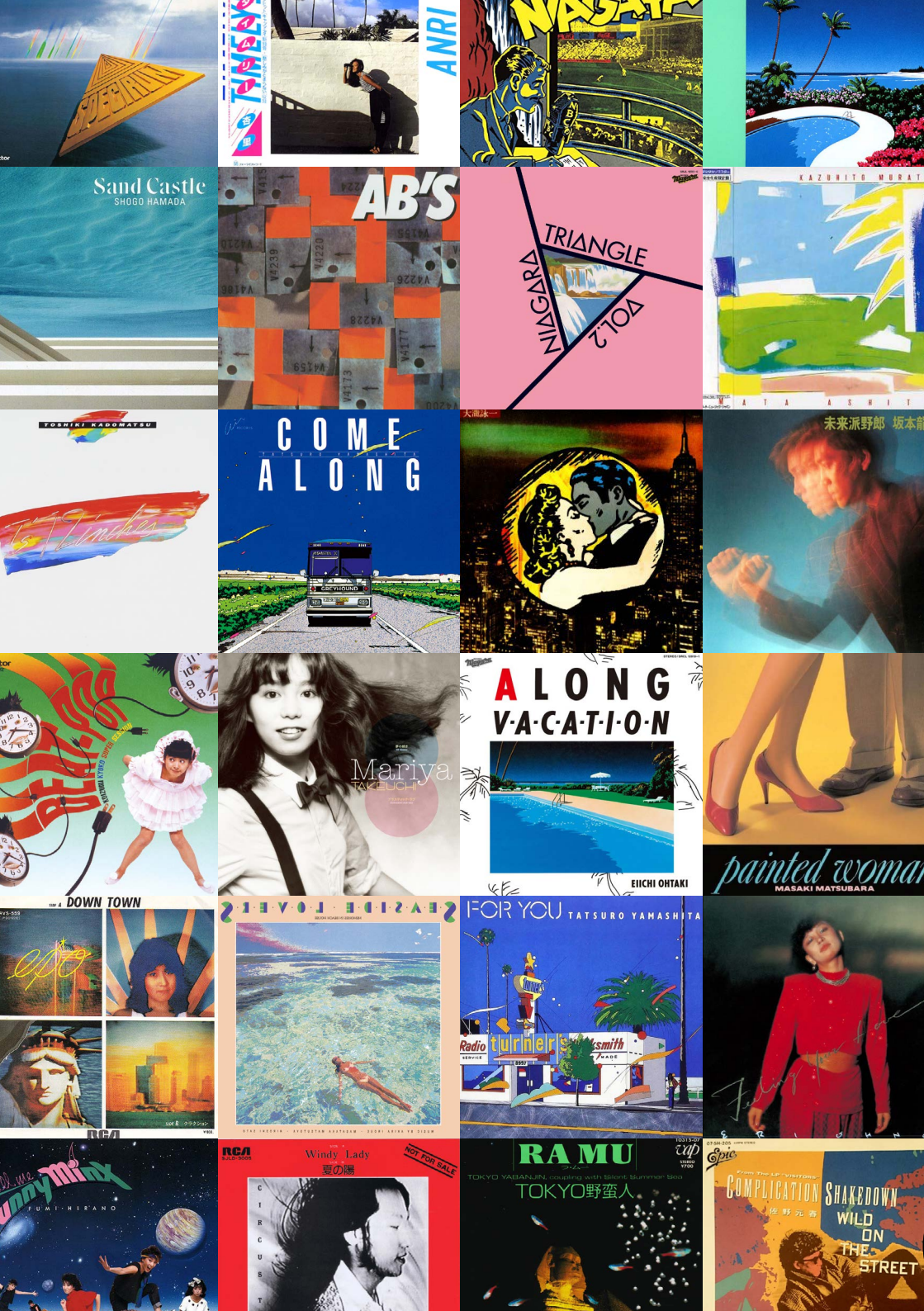




MYSTIC FORMS

CITY POP COLLECTION





CITY POP COLLECTION

Our City Pop Collection is inspired by the 'City Pop' which is a loosely defined form of Japanese pop music emerged in the late 1970s and peaked in the 1980s.

This collection captures the vibrant, optimistic, slick and urban atmosphere of the Japanese pop music and culture in the 80s.

City Pop was representing the mood of the era rather than a clear form of musical genre. Through the lyrics, melody and the album cover visuals, it depicted the slick and sophisticated urban atmosphere of Tokyo and the seaside resort of the surrounding area in the era of the rapid economic growth. This collection features those iconic motifs and the optimistic mood in the design.

CITY POP

CITY POP

Capturing the Urban Chic of 1980s Japan

City Pop, a musical genre that blossomed in the extravagant 1980s, was the symphony of urban sophistication. Inspired by American styles like funk, yacht rock, boogie, and lounge music, it was the soundtrack of an era marked by economic prosperity, consumerism, and a craving for leisure.

Photo: Cityscape of the bay area in Tokyo



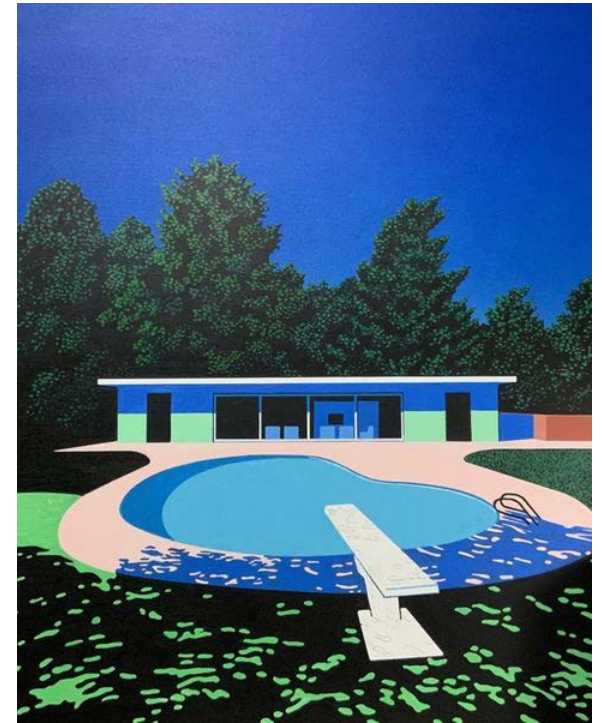


CITYSCAPE

FORM091 CITYSCAPE Necklace

SPLASH

FORM089 SPLASH Hoops



Poster by Hiroshi Nagai





Fuyü-Kükan, Tomoko Aran 1983



SPLASH

FORM090 SPLASH Necklace



RADIO BUILDING, Eizin Suzuki 1982



SKYLINE

FORM080 SKYLINE Studs



TOKAI

FORM085 TOKAI Hoops



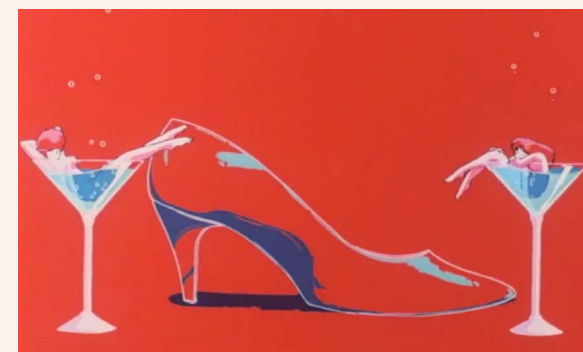
Poster by Hiroshi Nagai



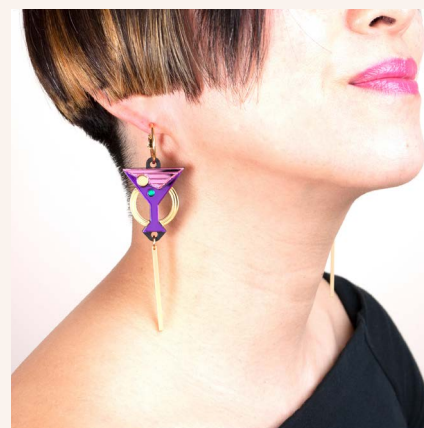
'TOKAI' means city in Japanese



SODA
FORM088 SODA Hoops

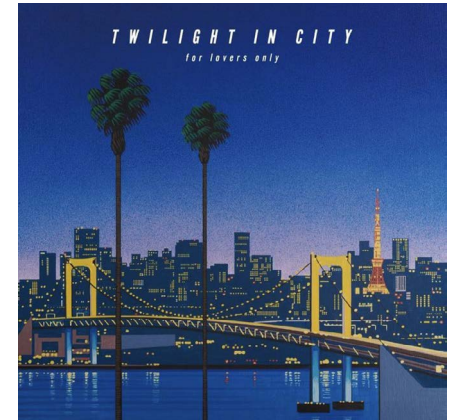


Anime, Dirty Pair The Movie 1987



TWILIGHT

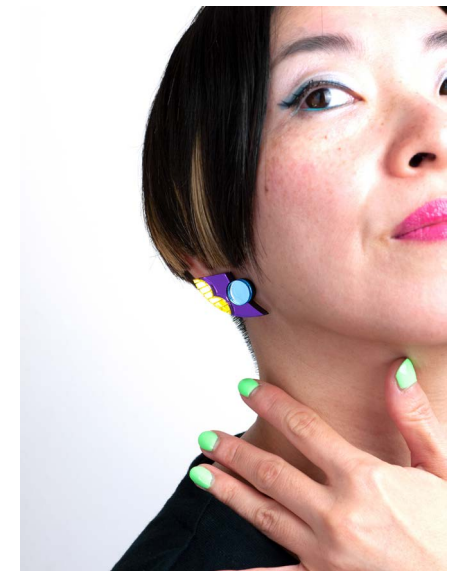
FORM083 TWILIGHT Studs



TWILIGHT IN CITY,
Cover Art by Hiroshi Nagai



Noriai Basha,
Eiichi Ohtaki 1972



With iconic cover art depicting sun-soaked coastlines and sleek cars, City Pop embodied fantasies of seaside getaways. It remains a cherished relic, encapsulating the vibrancy of 80s urban life.

Photo: Seaside resort in Shonan, Kanagawa





BREEZE

FORM079 BREEZE Studs



Come Along, Tatsuro Yamashita 1984
Cover Art by Eizin Suzuki



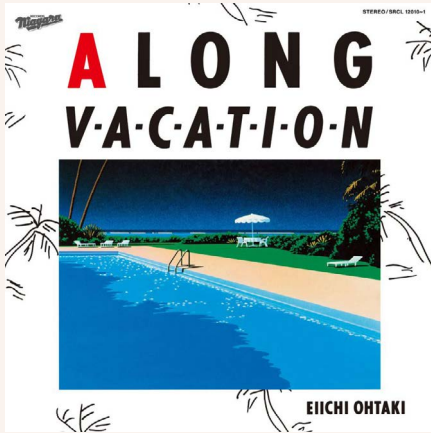
SPARKLE

FORM087 SPARKLE Studs



For You, Tatsuro Yamashita 1982
Cover Art by Eizin Suzuki





A Long Vacation, Eiichi Ohtaki 1981



Timely, Anri 1983



'NAGISA' means beach in Japanese



NAGISA
FORM086 NAGISA Hoops

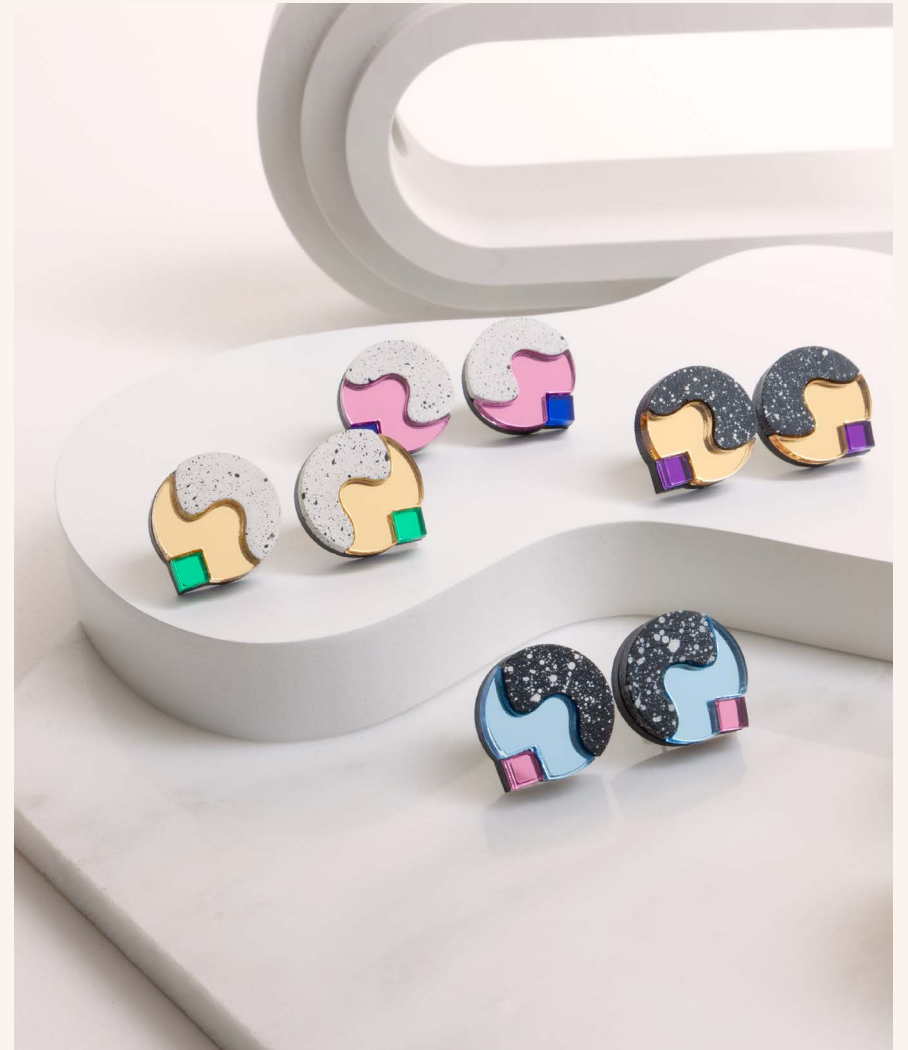


BUBBLE
FORM082 BUBBLE Necklace



BUBBLE

FORM081 BUBBLE Studs





Sunset Afternoon,
Akira Inoue 1983



Illustration by Hisashi Eguchi 1987



'MINAMO' means water surface
in Japanese



MINAMO
FORM084 MINAMO Studs



MYSTIC FORMS CITY POP MIX vol.1

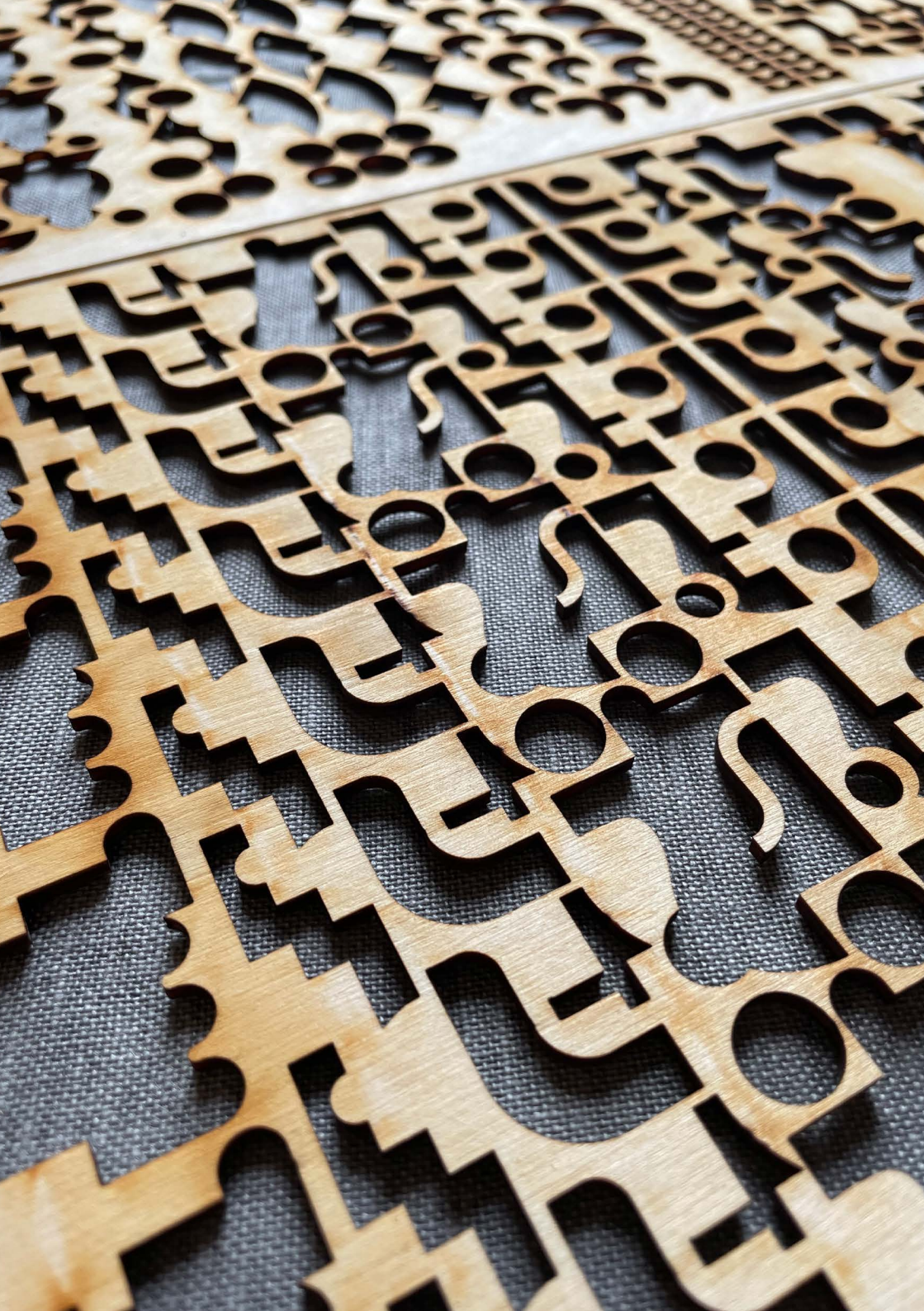
To celebrate our CITY POP Collection, we asked Tokyo based DJ UC to create a DJ mix featuring the iconic city pop songs including some very rare tracks.

[Visit the link here](#) to listen or scan the QR code below - hope you will enjoy!



TRACK LIST

- 01) Jingle: Niagara March/ Eiichi Ohtaki (1976)
- 02) 夢で逢えたら (Dreams) / Ann Lewis (1982)
- 03) Sparkle / Tatsuro Yamashita (1982)
- 04) Fill the Sail / AB'S (1983)
- 05) Shall I Sing? / Vibes (2003)
- 06) Rain Dolphin / Nobuo Ariga (1992)
- 07) 愛は彼方 / Yuko Imai (1990)
- 08) 朝は君に / Minako Yoshida (1976)
- 09) Windy Lady / Tatsuro Yamashita (1976)
- 10) F. L. Y / SPECTRUM (1980)
- 11) Pink Shadow / Bread & Butter (1974)
- 12) Pink Shadow (2004 Ver.) / Bread & Butter (2004)
- 13) NATIONAL ALBUM COUNT DOWN? THIS WEEK NO.1! / EPO (1981)
- 14) Holiday / Toru Yazawa (1978)
- 15) Vibration (Love Celebration) / Kimiko Kasai (1977)
- 16) LIVING INSIDE YOUR LOVE / Eri Ohno (1979)
- 17) LIVING IN THE CITY / Judy Anton (1980)
- 18) 渚のほのめき / Takao Kisugi (1982)
- 19) 恋は流星 Part I / Minako Yoshida (1977)
- 20) Beginning / Daisuke Inoue (1982)
- 21) JOEPO - DOWN TOWN / EPO (1982)
- 22) Tokyo Tower (EXECUTIVE SPECIAL POWER MIX) /Toshiki Kadomatsu (1986)
- 23) Tokyo野蛮人 / RA MU (1988)
- 24) TUXEDO CONNECTION / Hitomi "Penny" Tohyama (1983)
- 25) DREAM CHILD (NEW VERSION) / Nami Shimada (1987)
- 26) Complication Shakedown (Special Extended Club Mix) / Motoharu Sano (1984)
- 27) Ballet Mecanique (Live 1986 Ver.) / Ryuichi Sakamoto (1986)
- 28) SEASON / FISHMANS (1996)
- 29) 恋は流星 Part II / Minako Yoshida (1977)
- 30) Solid Slider (Live Ver.) / Tatsuro Yamashita (1978)
- 31) SILLY CRUSH / Masaki Matsubara (1983)
- 32) Plastic Love (12" Extended Club Mix) / Mariya Takeuchi (1984)
- 33) Plastic Love / Mariya Takeuchi (1984)
- 34) I'm In Love / Tomoko Aran (1983)
- 35) Moon Light (re: Yann Tomita) / Kyoko Koizumi (1989)
- 36) THE GATE OF JAPONESIA / MELON (1982)
- 37) 夢で逢えたら / Fumi Hirano (1983)



SUSTAINABILITY

Materials

We use FSC certified wood for most of the recent designs. While we use acrylic, we are actively working to minimise its impact of this by ensuring our jewellery is designed to last and offering a repair service for customers to enjoy our pieces for longer.

Packaging

Our original jewellery gift boxes are eco-friendly and made from recycled materials.

The foam inserts are created using Tall oil, a by-product extracted from trees during paper production. This sustainable foam has a significantly lower carbon footprint compared to traditional plastic foam inserts.

Our FSC certified cardboard boxes are held together with water-based glue, further reducing our environmental impact.



ABOUT MYSTIC FORMS

Founded in 2015 and started as an artistic research project by a London-based Japanese artist Akiko Ban in collaboration with a graphic designer Taiyo Nagano, MYSTIC FORMS is an experimental jewellery brand inspired by the 'mystic forms' found while travelling around the world from ancient gods and goddess in Egypt, spiritual temples in Thailand, the Maya civilization in Mexico to the pop music and culture in Japan.

Exploring the boundary between fashion and art, the brand prides itself on creating wearable art pieces carefully handcrafted in London.

With recent collaborations with British Museum, Tate Modern, University Arts London and international stockists, MYSTIC FORMS continues to captivate audiences worldwide.



Founders Akiko Ban & Taiyo Nagano

Akiko holds an MFA in Sculpture from Slade School of Fine Art and a BA in Drawing from Camberwell College of Arts (UAL). Her works have been exhibited internationally and her recent projects include the collaboration with Basement Jaxx and the Japanese animation Evangelion and a Tokyo fashion brand matohu. Her work 'Sky Goddess' was selected for RA summer show in 2016.

Taiyo is a graphic and digital media designer originally from Tokyo and he is an integral part of MYSTIC FORMS as a creative director. He is the founder of the east London design studio Tamassy Creative who recently worked on the graphics for BBC/Netflix drama Giri/Haji. He holds an MA in Digital Arts from Camberwell College of Arts (UAL).



MYSTIC FORMS

mysticforms.com

info@mysticforms.com

