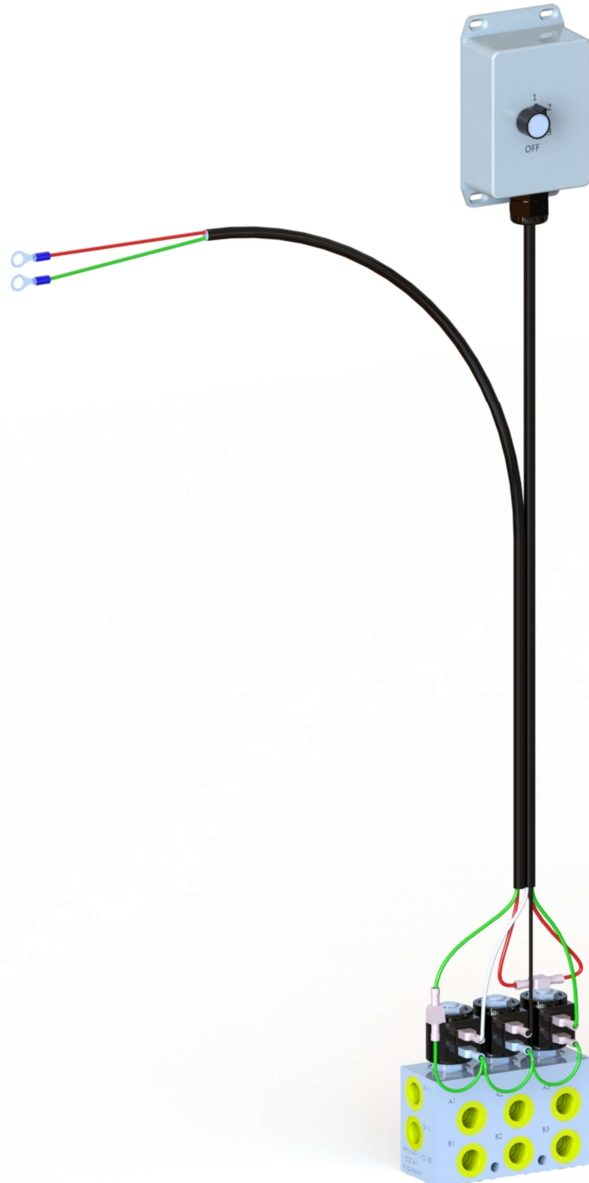




A-FMHF130814-3

3-WAY SELECTOR VALVE

Turn your Hydraulic Pump unit into multi functional pumping unit with a 3-Way Selector valve.



OWNER'S MANUAL

Rev. Sep. 2017

TABLE OF CONTENTS

TABLE OF CONTENTS	2
WARRANTY	2
PREFACE	3
SAFETY PRECAUTIONS	
SAFETY STATEMENTS	3
GENERAL SAFETY PRECAUTIONS	4
EQUIPMENT SAFETY PRECAUTIONS	5
MAINTENANCE AND SERVICE	6
TROUBLE SHOOTING	7
SPECIFICATION	8

Warranty Conditions

Warranty Coverage:

Primary Mover, Inc., herein referred to as Primary Mover, undertakes to replace or repair any part of a Primary Mover Hydraulic and Electric Accessories where damage has been proven to be caused by defects in material or workmanship.

This Warranty is valid for a period of one year for all hydraulic components and attachments and for a period of 1 year for all other electric components from date of the original retail sale. Parts replaced or repaired under the terms of this Warranty are guaranteed only until the original warranty expires.

It is further understood and agreed that the defect should be immediately reported to the Selling Dealer. The Selling Dealer will generally perform Warranty repairs or replacements and the Purchaser shall deliver the Primary Mover Hydraulic and Electric Accessories to the Dealer's place of business for repair. In the event Purchaser is located more than 75 miles from the Selling Dealer, any Primary Mover Dealer authorized to sell and service Primary Mover Products may perform the repair at its dealership.

The obligation from Primary Mover to the Purchaser under this Warranty is limited to the repair or replacement of defective parts by an authorized Primary Mover dealer. Repair or replacement in accordance with this Warranty shall constitute fulfillment of all liabilities of Primary Mover and the Selling Dealer in respect to Primary Mover Hydraulic and Electric Accessories.

There are no warranties beyond those which expressly appear herein. Any implied warranty of merchantability or fitness for a particular purpose is specifically excluded here from.

Warranty Provisions:

Primary Mover's liability under this Warranty is subject to the observance by the Purchaser of the following provisions:

- The purchaser shall at all times in the operation of any Primary Mover Product, use those brands and grades of lubricating oils, lubricants or fuel and spare parts officially approved by Primary Mover.
- The Primary Mover Hydraulic and Electric Accessories shall have been used in accordance with the procedures specified in the Operator's Manual. This Warranty does not extend to damage resulting from misapplication, abuse, misuse, failure to perform maintenance, negligence, fire, accidents or changes or faulty mounting carried out by the Purchaser. When making a Warranty exchange of parts, the Purchaser shall compensate Primary Mover for the time that the parts have been used if they have been exposed to extreme wear.
- Compensation is not paid for physical harm, deadlock, resulting damages or other losses.
- To obtain warranty service, the Purchaser must (1) report the product defect to an authorized Primary Mover dealer and request repair within the applicable warranty term and (2) present evidence of purchase or date of original use.
- The Warranty shall be void if the Primary Mover Hydraulic and Electric Accessories has been altered or repaired outside of a Primary Mover dealership in a manner which, in sole judgment of Primary Mover, affects its performance, stability or reliability.
- The customer shall be responsible for transportation expenses for the Primary Mover Hydraulic and Electric Accessories to the dealership or travel of dealer personnel to customer location for Warranty repair. The customer shall also pay any premium for overtime labor requested by the customer.
- Temporary repairs or additional costs due to the work being performed after normal working hours will not be compensated.
- The above warranty is in lieu of all other warranties on Primary Mover's behalf and neither party assumes any other liability in connection with Primary Mover's Products.
- Any dispute arising between Primary Mover and the Purchaser concerning the liability of Primary Mover under this warranty shall be subject to the laws of the State of Texas.

Right to Make Design and Product Changes:

Primary Mover reserves the right to make changes in the design and other changes in its Primary Mover Products at any time without incurring any obligation with respect to any product previously ordered, sold or shipped.

PREFACE

GENERAL COMMENTS

Congratulations on the purchase of your new attachment! This product was carefully designed and manufactured to give you many years of dependable service. Only minor maintenance (such as cleaning and lubricating) is required to keep it in top working condition. Be sure to observe all maintenance procedures and safety precautions in this manual and on any safety decals located on the product and on any equipment on which the attachment is mounted.

This manual has been designed to help you do a better and safer job. Read this manual carefully and become familiar with its contents.

WARNING! Never let anyone operate this unit without reading the "Safety Precautions" and "Operating Instructions" sections of this manual. Always choose hard, level ground to park the vehicle on and set the brake so the unit cannot roll.



Unless noted otherwise, right and left sides are determined from the operator's control position when facing the attachment.

NOTE: The illustrations and data used in this manual were current (according to the information available to us) at the time of printing, however, we reserve the right to redesign and change the attachment as may be necessary without notification.

BEFORE OPERATION

The primary responsibility for safety with this equipment falls to the operator. Make sure the equipment is operated only by trained individuals that have read and understand this manual. If there is any portion of this manual or function you do not understand, contact your local authorized dealer or the manufacturer.

SAFETY ALERT SYMBOL



This is the "Safety Alert Symbol" used by this industry. This symbol is used to warn of possible injury. Be sure to read all warnings carefully. They are included for your safety and for the safety of others working with you.

SERVICE

When servicing your product, remember to use only manufacturer replacement parts. Substitute parts may not meet the standards required for safe, dependable operation.

To facilitate parts ordering, you need the model and serial number of your unit. This information may be obtained from the identification Plate located on the product.

The parts department needs this information to insure that you receive the correct parts for your specific model.

SAFETY STATEMENTS



THIS SYMBOL BY ITSELF OR WITH A WARNING WORD THROUGHOUT THIS MANUAL IS USED TO CALL YOUR ATTENTION TO INSTRUCTIONS INVOLVING YOUR PERSONAL SAFETY OR THE SAFETY OF OTHERS. FAILURE TO FOLLOW THESE INSTRUCTIONS CAN RESULT IN INJURY OR DEATH.



DANGER

THIS SIGNAL WORD IS USED WHERE SERIOUS INJURY OR DEATH WILL RESULT IF THE INSTRUCTIONS ARE NOT FOLLOWED PROPERLY.



WARNING

THIS SIGNAL WORD IS USED WHERE SERIOUS INJURY OR DEATH COULD RESULT IF THE INSTRUCTIONS ARE NOT FOLLOWED PROPERLY.



CAUTION

THIS SIGNAL WORD IS USED WHERE MINOR INJURY COULD RESULT IF THE INSTRUCTIONS ARE NOT FOLLOWED PROPERLY.

NOTICE

NOTICE INDICATES A PROPERTY DAMAGE MESSAGE.

GENERAL SAFETY PRECAUTIONS

WARNING! READ MANUAL PRIOR TO INSTALLATION



Improper installation, operation, or maintenance of this equipment could result in serious injury or death. Operators and maintenance personnel should read this manual, as well as all manuals related to this equipment and the prime mover thoroughly before beginning installation, operation, or maintenance. **FOLLOW ALL SAFETY INSTRUCTIONS IN THIS MANUAL AND THE PRIME MOVER'S MANUAL(S).**



READ AND UNDERSTAND ALL SAFETY STATEMENTS

Read all safety decals and safety statements in all manuals prior to operating or working on this equipment. Know and obey all OSHA regulations, local laws, and other professional guidelines for your operation. Know and follow good work practices when assembling, maintaining, repairing, mounting, removing, or operating this equipment.



KNOW YOUR EQUIPMENT

Know your equipment's capabilities, dimensions, and operations before operating. Visually inspect your equipment before you start, and never operate equipment that is not in proper working order with all safety devices intact. Check all hardware to ensure it is tight. Make certain that all locking pins, latches, and connection devices are properly installed and secured. Remove and replace any damaged, fatigued, or excessively worn parts. Make certain all safety decals are in place and are legible. Keep decals clean, and replace them if they become worn or hard to read.

WARNING! PROTECT AGAINST FLYING DEBRIS



Always wear proper safety glasses, goggles, or a face shield when driving pins in or out, or when any operation causes dust, flying debris, or any other hazardous material.

WARNING! LOWER OR SUPPORT RAISED EQUIPMENT



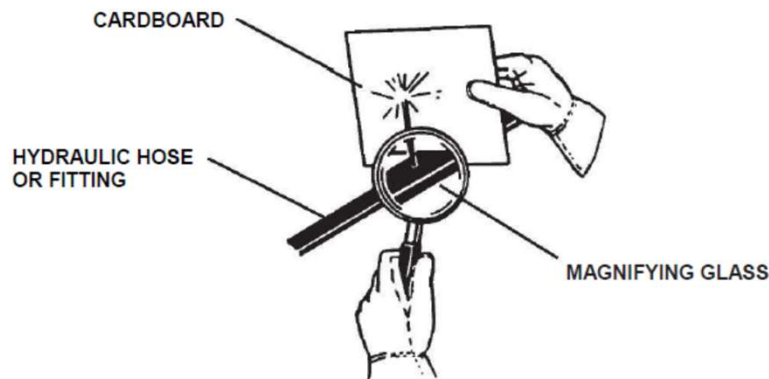
Do not work under raised booms without supporting them. Do not use support material made of concrete blocks, logs, buckets, barrels, or any other material that could suddenly collapse or shift positions. Make sure support material is solid, not decayed, warped, twisted, or tapered. Lower booms to be ground level or on blocks. Lower booms and attachments are to the ground before leaving the cab or operator's station.

WARNING! USE CARE WITH HYDRAULIC FLUID PRESSURE



Hydraulic fluid under pressure can penetrate the skin and cause serious injury or death. Hydraulic leaks under pressure may not be visible. Before connecting or disconnecting hydraulic hoses, read your prime mover's operator's manual for detailed instructions on connecting and disconnecting hydraulic hoses or fittings.

- Keep unprotected body parts, such as face, eyes, and arms as far away as possible from a suspected leak. Flesh injected with hydraulic fluid may develop gangrene or other permanent disabilities.
- If injured by injected fluid, see a doctor at once. If your doctor is not familiar with this type of injury, ask him to research it immediately to determine proper treatment.
- Wear safety glasses, protective clothing, and use a piece of cardboard or wood when searching for hydraulic leaks. **DO NOT USE YOUR HANDS! SEE ILLUSTRATION.**



GENEAL SAFETY PRECAUTIONS

WARNING! DO NOT MODIFY MACHINE OR ATTACHMENTS



Modifications may weaken the integrity of the attachment and may impair the function, safety, life, and performance of the attachment. When making repairs, use only the manufacturer's genuine parts, following authorized instructions. Other parts may be substandard in fit and quality. Never modify any ROPS (Roll Over Protection Structure) or FOPS (Falling Object Protective Structure) equipment or device. Any modifications must be authorized in writing by the manufacturer.

WARNING! SAFELY MAINTAIN AND REPAIR EQUIPMENT



- Do not wear loose clothing or any accessories that can catch in moving parts. If you have long hair, cover or secure it so that it does not become entangled in the equipment.
- Work on a level surface in a well-lit area. Use properly grounded electrical outlets and tools.
- Use the correct tools for the job at hand. Make sure they are in good condition for the task required.
- Wear the protective equipment specified by the tool manufacturer.



SAFELY OPERATE EQUIPMENT

Do not operate equipment until you are completely trained by a qualified operator in how to use the controls, know its capabilities, dimensions, and all safety requirements. See your machine's manual for these instructions.

- Keep all step plates, grab bars, pedals, and controls free of dirt, grease, debris, and oil.
- Never allow anyone to be around the equipment when it is operating.
- Do not allow riders on the attachment or the prime mover.
- Do not operate the equipment from anywhere other than the correct operator's position.
- Never leave equipment unattended with the engine running or with this attachment in a raised position.
- Do not alter or remove any safety feature from the prime mover or this attachment.
- Know your work site safety rules as well as traffic rules and flow. When in doubt on any safety issue, contact your supervisor or safety coordinator for an explanation.

EQUIPMENT SAFETY PRECAUTIONS

WARNING! KNOW WHERE UTILITIES ARE



Observe overhead electrical and other utility lines. Be sure equipment will clear them. When digging, call your local utilities for location of buried utility lines, gas, water, and sewer, as well as any other hazard you may encounter.

WARNING! EXPOSURE TO RESPIRABLE CRYSTALLINE SILICA DUST ALONG WITH OTHER HAZARDOUS DUSTS MAY CAUSE SERIOUS OR FATAL RESPIRATORY DISEASE.



It is recommended to use dust suppression, dust collection and if necessary personal protective equipment during the operation of any attachment that may cause high levels of dust.

WARNING! REMOVE PAINT BEFORE WELDING OR HEATING



Hazardous fumes/dust can be generated when paint is heated by welding, soldering or using a torch. Do the all work outside or in a well-ventilated area and dispose of paint and solvent properly. Remove paint before welding or heating.

When sanding or grinding paint, avoid breathing the dust. Wear an approved respirator. If you use solvent or paint stripper, remove stripper with soap and water before welding. Remove solvent or paint stripper containers and other flammable material from area. Allow fumes to disperse at least 15 minutes before welding or heating.

MAINTENANCE AND SERVICE

GENERAL INFORMATION

Regular maintenance is the key to long equipment life and safe operation. Maintenance requirements have been reduced to an absolute minimum. However, it is very important that these maintenance functions be performed as described below.

EVERY 8 HOURS OF OPERATION

Grease all swivel points (ram and base end of all cylinders) thoroughly. Excessive wear and even mechanical damage to pins and cylinders can result from inadequate lubrication. Use multi-purpose grease.

Lubricate all grease fittings with multi-purpose grease. For grease locations, refer to the diagram in the lubrication section of this manual.

EVERY 40 HOURS OF OPERATION

Check hydraulic reservoir fluid level. If oil is low, check all lines, fittings, and control valve for signs of leakage.

IMPORTANT: Hydraulic fluid level should be checked with backhoe in transport position.

WARNING! Escaping hydraulic/diesel fluid under pressure can penetrate the skin causing serious injury.



DO NOT use your hand to check for leaks. Use a piece of cardboard or paper to search for leaks.

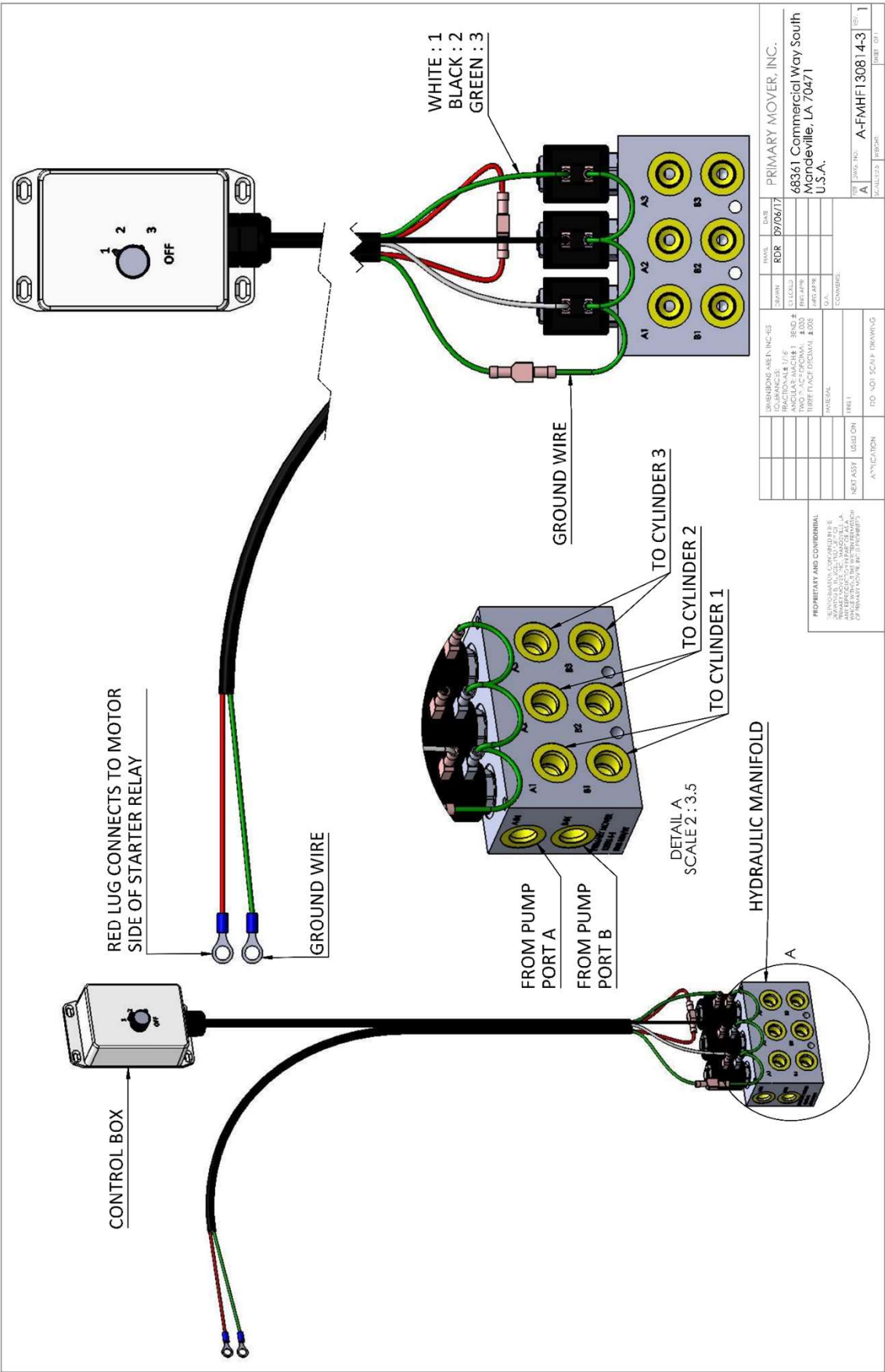
Stop engine and relieve pressure before connecting or disconnecting lines. Tighten all connections before starting engine or pressurizing lines. If any hydraulic/diesel fluid is injected into the skin, obtain medical attention immediately or gangrene or other serious injury will result.



Physically check all pins, bushings, cotter pins, nuts, etc., for signs of wear or loose fit. Tighten as required, replacing where necessary. (Bolts and pins may vibrate loose during operation.) Clean equipment of all dirt, oil, and excess grease. This will assist you in making visual inspections and help avoid overlooking worn or damaged components.

TROUBLE SHOTING

PROBLEM	POSSIBLE CAUSE	REMEDY
Oil heating	Dirty oil	Drain and refill oil, replace filter
	Partially plugged inlet filter	Clean filter element
	Control valve held open too long	Return control to neutral position when not in use
	Relief valve set too low	Set valve correctly
	Oil too light in hot weather	Use recommended oil
	Engine running too fast	Reduce throttle
	Damaged oil lines	Replace damaged lines
	Poor operating technique causing excessive oil flow over relief valve	Learn smooth operating methods
External leakage	Damaged O-rings on valve Repair control valve Spools	Repair control valve
	Cylinder seals damaged	Repair cylinder
	Broken oil lines	Replace hose and check for leaks
Cylinder malfunctioning	Oil leaking past packing or seals	Replace packing or seals
	Faulty relief valve	Clean or replace
Electric function reversed	Electric cables inputted incorrectly to valve	Reverse cables to valve



DESIGN	DATE	REV	DESCRIPTION
RDR	07/06/17		
REVISIONS	DATE	BY	DESCRIPTION
1			
2			
3			
4			
5			
6			
7			
8			
9			
10			
11			
12			
13			
14			
15			
16			
17			
18			
19			
20			
21			
22			
23			
24			
25			
26			
27			
28			
29			
30			
31			
32			
33			
34			
35			
36			
37			
38			
39			
40			
41			
42			
43			
44			
45			
46			
47			
48			
49			
50			
51			
52			
53			
54			
55			
56			
57			
58			
59			
60			
61			
62			
63			
64			
65			
66			
67			
68			
69			
70			
71			
72			
73			
74			
75			
76			
77			
78			
79			
80			
81			
82			
83			
84			
85			
86			
87			
88			
89			
90			
91			
92			
93			
94			
95			
96			
97			
98			
99			
100			

PROPRIETARY AND CONFIDENTIAL
 INFORMATION CONTAINED HEREIN IS THE PROPERTY OF PRIMARY MOVER, INC. AND IS NOT TO BE DISCLOSED OR REPRODUCED IN ANY MANNER WITHOUT THE WRITTEN PERMISSION OF PRIMARY MOVER, INC.

PRIMARY MOVER, INC.
 68361 Commercial Way South
 Mandeville, LA 70471
 U.S.A.

TO DO NOT SCALE DRAWING
 ANTICIPATION
 NEXT ASSY
 USED ON

SCALE 1 : 1
 SCALE 2 : 3.5
 SCALE 3 : 10

SCALE 4 : 10
 SCALE 5 : 10
 SCALE 6 : 10
 SCALE 7 : 10
 SCALE 8 : 10
 SCALE 9 : 10
 SCALE 10 : 10
 SCALE 11 : 10
 SCALE 12 : 10
 SCALE 13 : 10
 SCALE 14 : 10
 SCALE 15 : 10
 SCALE 16 : 10
 SCALE 17 : 10
 SCALE 18 : 10
 SCALE 19 : 10
 SCALE 20 : 10
 SCALE 21 : 10
 SCALE 22 : 10
 SCALE 23 : 10
 SCALE 24 : 10
 SCALE 25 : 10
 SCALE 26 : 10
 SCALE 27 : 10
 SCALE 28 : 10
 SCALE 29 : 10
 SCALE 30 : 10
 SCALE 31 : 10
 SCALE 32 : 10
 SCALE 33 : 10
 SCALE 34 : 10
 SCALE 35 : 10
 SCALE 36 : 10
 SCALE 37 : 10
 SCALE 38 : 10
 SCALE 39 : 10
 SCALE 40 : 10
 SCALE 41 : 10
 SCALE 42 : 10
 SCALE 43 : 10
 SCALE 44 : 10
 SCALE 45 : 10
 SCALE 46 : 10
 SCALE 47 : 10
 SCALE 48 : 10
 SCALE 49 : 10
 SCALE 50 : 10
 SCALE 51 : 10
 SCALE 52 : 10
 SCALE 53 : 10
 SCALE 54 : 10
 SCALE 55 : 10
 SCALE 56 : 10
 SCALE 57 : 10
 SCALE 58 : 10
 SCALE 59 : 10
 SCALE 60 : 10
 SCALE 61 : 10
 SCALE 62 : 10
 SCALE 63 : 10
 SCALE 64 : 10
 SCALE 65 : 10
 SCALE 66 : 10
 SCALE 67 : 10
 SCALE 68 : 10
 SCALE 69 : 10
 SCALE 70 : 10
 SCALE 71 : 10
 SCALE 72 : 10
 SCALE 73 : 10
 SCALE 74 : 10
 SCALE 75 : 10
 SCALE 76 : 10
 SCALE 77 : 10
 SCALE 78 : 10
 SCALE 79 : 10
 SCALE 80 : 10
 SCALE 81 : 10
 SCALE 82 : 10
 SCALE 83 : 10
 SCALE 84 : 10
 SCALE 85 : 10
 SCALE 86 : 10
 SCALE 87 : 10
 SCALE 88 : 10
 SCALE 89 : 10
 SCALE 90 : 10
 SCALE 91 : 10
 SCALE 92 : 10
 SCALE 93 : 10
 SCALE 94 : 10
 SCALE 95 : 10
 SCALE 96 : 10
 SCALE 97 : 10
 SCALE 98 : 10
 SCALE 99 : 10
 SCALE 100 : 10

SCALE 101 : 10
 SCALE 102 : 10
 SCALE 103 : 10
 SCALE 104 : 10
 SCALE 105 : 10
 SCALE 106 : 10
 SCALE 107 : 10
 SCALE 108 : 10
 SCALE 109 : 10
 SCALE 110 : 10
 SCALE 111 : 10
 SCALE 112 : 10
 SCALE 113 : 10
 SCALE 114 : 10
 SCALE 115 : 10
 SCALE 116 : 10
 SCALE 117 : 10
 SCALE 118 : 10
 SCALE 119 : 10
 SCALE 120 : 10
 SCALE 121 : 10
 SCALE 122 : 10
 SCALE 123 : 10
 SCALE 124 : 10
 SCALE 125 : 10
 SCALE 126 : 10
 SCALE 127 : 10
 SCALE 128 : 10
 SCALE 129 : 10
 SCALE 130 : 10
 SCALE 131 : 10
 SCALE 132 : 10
 SCALE 133 : 10
 SCALE 134 : 10
 SCALE 135 : 10
 SCALE 136 : 10
 SCALE 137 : 10
 SCALE 138 : 10
 SCALE 139 : 10
 SCALE 140 : 10
 SCALE 141 : 10
 SCALE 142 : 10
 SCALE 143 : 10
 SCALE 144 : 10
 SCALE 145 : 10
 SCALE 146 : 10
 SCALE 147 : 10
 SCALE 148 : 10
 SCALE 149 : 10
 SCALE 150 : 10
 SCALE 151 : 10
 SCALE 152 : 10
 SCALE 153 : 10
 SCALE 154 : 10
 SCALE 155 : 10
 SCALE 156 : 10
 SCALE 157 : 10
 SCALE 158 : 10
 SCALE 159 : 10
 SCALE 160 : 10
 SCALE 161 : 10
 SCALE 162 : 10
 SCALE 163 : 10
 SCALE 164 : 10
 SCALE 165 : 10
 SCALE 166 : 10
 SCALE 167 : 10
 SCALE 168 : 10
 SCALE 169 : 10
 SCALE 170 : 10
 SCALE 171 : 10
 SCALE 172 : 10
 SCALE 173 : 10
 SCALE 174 : 10
 SCALE 175 : 10
 SCALE 176 : 10
 SCALE 177 : 10
 SCALE 178 : 10
 SCALE 179 : 10
 SCALE 180 : 10
 SCALE 181 : 10
 SCALE 182 : 10
 SCALE 183 : 10
 SCALE 184 : 10
 SCALE 185 : 10
 SCALE 186 : 10
 SCALE 187 : 10
 SCALE 188 : 10
 SCALE 189 : 10
 SCALE 190 : 10
 SCALE 191 : 10
 SCALE 192 : 10
 SCALE 193 : 10
 SCALE 194 : 10
 SCALE 195 : 10
 SCALE 196 : 10
 SCALE 197 : 10
 SCALE 198 : 10
 SCALE 199 : 10
 SCALE 200 : 10

SCALE 201 : 10
 SCALE 202 : 10
 SCALE 203 : 10
 SCALE 204 : 10
 SCALE 205 : 10
 SCALE 206 : 10
 SCALE 207 : 10
 SCALE 208 : 10
 SCALE 209 : 10
 SCALE 210 : 10
 SCALE 211 : 10
 SCALE 212 : 10
 SCALE 213 : 10
 SCALE 214 : 10
 SCALE 215 : 10
 SCALE 216 : 10
 SCALE 217 : 10
 SCALE 218 : 10
 SCALE 219 : 10
 SCALE 220 : 10
 SCALE 221 : 10
 SCALE 222 : 10
 SCALE 223 : 10
 SCALE 224 : 10
 SCALE 225 : 10
 SCALE 226 : 10
 SCALE 227 : 10
 SCALE 228 : 10
 SCALE 229 : 10
 SCALE 230 : 10
 SCALE 231 : 10
 SCALE 232 : 10
 SCALE 233 : 10
 SCALE 234 : 10
 SCALE 235 : 10
 SCALE 236 : 10
 SCALE 237 : 10
 SCALE 238 : 10
 SCALE 239 : 10
 SCALE 240 : 10
 SCALE 241 : 10
 SCALE 242 : 10
 SCALE 243 : 10
 SCALE 244 : 10
 SCALE 245 : 10
 SCALE 246 : 10
 SCALE 247 : 10
 SCALE 248 : 10
 SCALE 249 : 10
 SCALE 250 : 10
 SCALE 251 : 10
 SCALE 252 : 10
 SCALE 253 : 10
 SCALE 254 : 10
 SCALE 255 : 10
 SCALE 256 : 10
 SCALE 257 : 10
 SCALE 258 : 10
 SCALE 259 : 10
 SCALE 260 : 10
 SCALE 261 : 10
 SCALE 262 : 10
 SCALE 263 : 10
 SCALE 264 : 10
 SCALE 265 : 10
 SCALE 266 : 10
 SCALE 267 : 10
 SCALE 268 : 10
 SCALE 269 : 10
 SCALE 270 : 10
 SCALE 271 : 10
 SCALE 272 : 10
 SCALE 273 : 10
 SCALE 274 : 10
 SCALE 275 : 10
 SCALE 276 : 10
 SCALE 277 : 10
 SCALE 278 : 10
 SCALE 279 : 10
 SCALE 280 : 10
 SCALE 281 : 10
 SCALE 282 : 10
 SCALE 283 : 10
 SCALE 284 : 10
 SCALE 285 : 10
 SCALE 286 : 10
 SCALE 287 : 10
 SCALE 288 : 10
 SCALE 289 : 10
 SCALE 290 : 10
 SCALE 291 : 10
 SCALE 292 : 10
 SCALE 293 : 10
 SCALE 294 : 10
 SCALE 295 : 10
 SCALE 296 : 10
 SCALE 297 : 10
 SCALE 298 : 10
 SCALE 299 : 10
 SCALE 300 : 10

SCALE 301 : 10
 SCALE 302 : 10
 SCALE 303 : 10
 SCALE 304 : 10
 SCALE 305 : 10
 SCALE 306 : 10
 SCALE 307 : 10
 SCALE 308 : 10
 SCALE 309 : 10
 SCALE 310 : 10
 SCALE 311 : 10
 SCALE 312 : 10
 SCALE 313 : 10
 SCALE 314 : 10
 SCALE 315 : 10
 SCALE 316 : 10
 SCALE 317 : 10
 SCALE 318 : 10
 SCALE 319 : 10
 SCALE 320 : 10
 SCALE 321 : 10
 SCALE 322 : 10
 SCALE 323 : 10
 SCALE 324 : 10
 SCALE 325 : 10
 SCALE 326 : 10
 SCALE 327 : 10
 SCALE 328 : 10
 SCALE 329 : 10
 SCALE 330 : 10
 SCALE 331 : 10
 SCALE 332 : 10
 SCALE 333 : 10
 SCALE 334 : 10
 SCALE 335 : 10
 SCALE 336 : 10
 SCALE 337 : 10
 SCALE 338 : 10
 SCALE 339 : 10
 SCALE 340 : 10
 SCALE 341 : 10
 SCALE 342 : 10
 SCALE 343 : 10
 SCALE 344 : 10
 SCALE 345 : 10
 SCALE 346 : 10
 SCALE 347 : 10
 SCALE 348 : 10
 SCALE 349 : 10
 SCALE 350 : 10
 SCALE 351 : 10
 SCALE 352 : 10
 SCALE 353 : 10
 SCALE 354 : 10
 SCALE 355 : 10
 SCALE 356 : 10
 SCALE 357 : 10
 SCALE 358 : 10
 SCALE 359 : 10
 SCALE 360 : 10
 SCALE 361 : 10
 SCALE 362 : 10
 SCALE 363 : 10
 SCALE 364 : 10
 SCALE 365 : 10
 SCALE 366 : 10
 SCALE 367 : 10
 SCALE 368 : 10
 SCALE 369 : 10
 SCALE 370 : 10
 SCALE 371 : 10
 SCALE 372 : 10
 SCALE 373 : 10
 SCALE 374 : 10
 SCALE 375 : 10
 SCALE 376 : 10
 SCALE 377 : 10
 SCALE 378 : 10
 SCALE 379 : 10
 SCALE 380 : 10
 SCALE 381 : 10
 SCALE 382 : 10
 SCALE 383 : 10
 SCALE 384 : 10
 SCALE 385 : 10
 SCALE 386 : 10
 SCALE 387 : 10
 SCALE 388 : 10
 SCALE 389 : 10
 SCALE 390 : 10
 SCALE 391 : 10
 SCALE 392 : 10
 SCALE 393 : 10
 SCALE 394 : 10
 SCALE 395 : 10
 SCALE 396 : 10
 SCALE 397 : 10
 SCALE 398 : 10
 SCALE 399 : 10
 SCALE 400 : 10

SCALE 401 : 10
 SCALE 402 : 10
 SCALE 403 : 10
 SCALE 404 : 10
 SCALE 405 : 10
 SCALE 406 : 10
 SCALE 407 : 10
 SCALE 408 : 10
 SCALE 409 : 10
 SCALE 410 : 10
 SCALE 411 : 10
 SCALE 412 : 10
 SCALE 413 : 10
 SCALE 414 : 10
 SCALE 415 : 10
 SCALE 416 : 10
 SCALE 417 : 10
 SCALE 418 : 10
 SCALE 419 : 10
 SCALE 420 : 10
 SCALE 421 : 10
 SCALE 422 : 10
 SCALE 423 : 10
 SCALE 424 : 10
 SCALE 425 : 10
 SCALE 426 : 10
 SCALE 427 : 10
 SCALE 428 : 10
 SCALE 429 : 10
 SCALE 430 : 10
 SCALE 431 : 10
 SCALE 432 : 10
 SCALE 433 : 10
 SCALE 434 : 10
 SCALE 435 : 10
 SCALE 436 : 10
 SCALE 437 : 10
 SCALE 438 : 10
 SCALE 439 : 10
 SCALE 440 : 10
 SCALE 441 : 10
 SCALE 442 : 10
 SCALE 443 : 10
 SCALE 444 : 10
 SCALE 445 : 10
 SCALE 446 : 10
 SCALE 447 : 10
 SCALE 448 : 10
 SCALE 449 : 10
 SCALE 450 : 10
 SCALE 451 : 10
 SCALE 452 : 10
 SCALE 453 : 10
 SCALE 454 : 10
 SCALE 455 : 10
 SCALE 456 : 10
 SCALE 457 : 10
 SCALE 458 : 10
 SCALE 459 : 10
 SCALE 460 : 10
 SCALE 461 : 10
 SCALE 462 : 10
 SCALE 463 : 10
 SCALE 464 : 10
 SCALE 465 : 10
 SCALE 466 : 10
 SCALE 467 : 10
 SCALE 468 : 10
 SCALE 469 : 10
 SCALE 470 : 10
 SCALE 471 : 10
 SCALE 472 : 10
 SCALE 473 : 10
 SCALE 474 : 10
 SCALE 475 : 10
 SCALE 476 : 10
 SCALE 477 : 10
 SCALE 478 : 10
 SCALE 479 : 10
 SCALE 480 : 10
 SCALE 481 : 10
 SCALE 482 : 10
 SCALE 483 : 10
 SCALE 484 : 10
 SCALE 485 : 10
 SCALE 486 : 10
 SCALE 487 : 10
 SCALE 488 : 10
 SCALE 489 : 10
 SCALE 490 : 10
 SCALE 491 : 10
 SCALE 492 : 10
 SCALE 493 : 10
 SCALE 494 : 10
 SCALE 495 : 10
 SCALE 496 : 10
 SCALE 497 : 10
 SCALE 498 : 10
 SCALE 499 : 10
 SCALE 500 : 10

SCALE 501 : 10
 SCALE 502 : 10
 SCALE 503 : 10
 SCALE 504 : 10
 SCALE 505 : 10
 SCALE 506 : 10
 SCALE 507 : 10
 SCALE 508 : 10
 SCALE 509 : 10
 SCALE 510 : 10
 SCALE 511 : 10
 SCALE 512 : 10
 SCALE 513 : 10
 SCALE 514 : 10
 SCALE 515 : 10
 SCALE 516 : 10
 SCALE 517 : 10
 SCALE 518 : 10
 SCALE 519 : 10
 SCALE 520 : 10
 SCALE 521 : 10
 SCALE 522 : 10
 SCALE 523 : 10
 SCALE 524 : 10
 SCALE 525 : 10
 SCALE 526 : 10
 SCALE 527 : 10
 SCALE 528 : 10
 SCALE 529 : 10
 SCALE 530 : 10
 SCALE 531 : 10
 SCALE 532 : 10
 SCALE 533 : 10
 SCALE 534 : 10
 SCALE 535 : 10
 SCALE 536 : 10
 SCALE 537 : 10
 SCALE 538 : 10
 SCALE 539 : 10
 SCALE 540 : 10
 SCALE 541 : 10
 SCALE 542 : 10
 SCALE 543 : 10
 SCALE 544 : 10
 SCALE 545 : 10
 SCALE 546 : 10
 SCALE 547 : 10
 SCALE 548 : 10
 SCALE 549 : 10
 SCALE 550 : 10
 SCALE 551 : 10
 SCALE 552 : 10
 SCALE 553 : 10
 SCALE 554 : 10
 SCALE 555 : 10
 SCALE 556 : 10
 SCALE 557 : 10
 SCALE 558 : 10
 SCALE 559 : 10
 SCALE 560 : 10
 SCALE 561 : 10
 SCALE 562 : 10
 SCALE 563 : 10
 SCALE 564 : 10
 SCALE 565 : 10
 SCALE 566 : 10
 SCALE 567 : 10
 SCALE 568 : 10
 SCALE 569 : 10
 SCALE 570 : 10
 SCALE 571 : 10
 SCALE 572 : 10
 SCALE 573 : 10
 SCALE 574 : 10
 SCALE 575 : 10
 SCALE 576 : 10
 SCALE 577 : 10
 SCALE 578 : 10
 SCALE 579 : 10
 SCALE 580 : 10
 SCALE 581 : 10
 SCALE 582 : 10
 SCALE 583 : 10
 SCALE 584 : 10
 SCALE 585 : 10
 SCALE 586 : 10
 SCALE 587 : 10
 SCALE 588 : 10
 SCALE 589 : 10
 SCALE 590 : 10
 SCALE 591 : 10
 SCALE 592 : 10
 SCALE 593 : 10
 SCALE 594 : 10
 SCALE 595 : 10
 SCALE 596 : 10
 SCALE 597 : 10
 SCALE 598 : 10
 SCALE 599 : 10
 SCALE 600 : 10

SCALE 601 : 10
 SCALE 602 : 10
 SCALE 603 : 10
 SCALE 604 : 10
 SCALE 605 : 10
 SCALE 606 : 10
 SCALE 607 : 10
 SCALE 608 : 10
 SCALE 609 : 10
 SCALE 610 : 10
 SCALE 611 : 10
 SCALE 612 : 10
 SCALE 613 : 10
 SCALE 614 : 10
 SCALE 615 : 10
 SCALE 616 : 10
 SCALE 617 : 10
 SCALE 618 : 10
 SCALE 619 : 10
 SCALE 620 : 10
 SCALE 621 : 10
 SCALE 622 : 10
 SCALE 623 : 10
 SCALE 624 : 10
 SCALE 625 : 10
 SCALE 626 : 10
 SCALE 627 : 10
 SCALE 628 : 10
 SCALE 629 : 10
 SCALE 630 : 10
 SCALE 631 : 10
 SCALE 632 : 10
 SCALE 633 : 10
 SCALE 634 : 10
 SCALE 635 : 10
 SCALE 636 : 10
 SCALE 637 : 10
 SCALE 638 : 10
 SCALE 639 : 10
 SCALE 640 : 10
 SCALE 641 : 10
 SCALE 642 : 10
 SCALE 643 : 10
 SCALE 644 : 10
 SCALE 645 : 10
 SCALE 646 : 10
 SCALE 647 : 10
 SCALE 648 : 10
 SCALE 649 : 10
 SCALE 650 : 10
 SCALE 651 : 10
 SCALE 652 : 10
 SCALE 653 : 10
 SCALE 654 : 10
 SCALE 655 : 10
 SCALE 656 : 10
 SCALE 657 : 10
 SCALE 658 : 10
 SCALE 659 : 10
 SCALE 660 : 10
 SCALE 661 : 10
 SCALE 662 : 10
 SCALE 663 : 10
 SCALE 664 : 10
 SCALE 665 : 10
 SCALE 666 : 10
 SCALE 667 : 10
 SCALE 668 : 10
 SCALE 669 : 10
 SCALE 670 : 10
 SCALE 671 : 10
 SCALE 672 : 10
 SCALE 673 : 10
 SCALE 674 : 10
 SCALE 675 : 10
 SCALE 676 : 10
 SCALE 677 : 10
 SCALE 678 : 10
 SCALE 679 : 10
 SCALE 680 : 10
 SCALE 681 : 10
 SCALE 682 :

PRIMARY MOVER
Primary Mover, Inc.
68361 Commercial Way South
Mandeville, LA 70471
1-985-373-0898
www.primarymover.com