



Outdoor Gear Review: Mishmi Takin Jacket ~ Women's Virunga

january 4, 2018 by [comtnmom](#) [leave a comment](#)



MISHMI TAKIN

While hiking in his native Himalayas, Kapil realized his high-end boots and jacket were not performing. So he founded **Mishmi Takin**, a company that designs ventilation-focused boots and shells with fabrics that vent immediately and outperform in both tropical and temperate climates. It's a unique brand with a lot to offer.

Although it's ideal for wet, humid hiking conditions... would one of these hard shell jackets also work for Colorado snow skiing? *Aren't we all about our gear multi-tasking?!* Well, I recently tested a Mishmi Takin jacket on the winter slopes of Crested Butte: the Women's Virunga. Read on to hear how this impressive jacket performed, and why you should consider adding one to your outdoor gear lineup.

Mishmi Takin Jacket - Hard Shell Women's Virunga

Welcome!



Hi, I'm Tami! Writer, Influencer, and mom of two who loves travel, the outdoors, staying active, photography, reading books, and eating desserts. We are pretty much always planning

our next trip to Disney World. [Read More...](#)

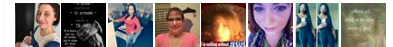


The Colorado Mountain Mom
2,880 likes

Like Page

Share

Be the first of your friends to like this



ONE DELICIOUS DINING OFFER!
Get details now!
Walt Disney World.
©Disney

Email Subscribe:

Enter your email address for weekly inspiration on travel ideas & getting kids outdoors:

Subscribe



Mishmi Takin Women's "Virunga" Jacket

The **Mishmi Takin Virunga** is a year-round, **high quality and highly versatile piece**. Named after the equator straddling Virunga National Park in Congo, Central Africa, 'Virunga' jacket is optimized for maximum breathability.

I've worn it over a warmth layer while **family skiing in Colorado**, and can't wait to also try it out in the shoulder rain seasons.

Features

The fabric is high tech, and very tough. A step up from their 2-layer fabric waterproof jacket, the Virunga is a 3-layer fabric made for durability. Yet it's even more lightweight, more waterproof, and more breathable.

Ideal for aerobic activities, there are multiple pit zips and laser cut vents for venting and moisture control. I found the pockets easy to access while skiing.

Fit

I was very pleased with the sizing, and feel it runs true to size. My fear was that my typical size may not be roomy enough to wear over a packable down jacket (warmth layer for skiing). But it fits very comfortably, with no tightness through the shoulders.

I'm 5'10" and found the sleeve length to be generous. The absolute only design detail I took issue with was the placement of the velco cuff adjuster. It seems like they'd be more practical if they were sewn in a different position, as the fully extended position was pretty much the default size of my wrist (ie no room on the Velcro strip to tighten the cuff any).

Other than that, I am thrilled with this jacket.

As Seen On:



Partners / Ambassador:



I'm in the center, wearing the Teal colored Virunga.

Invest in a Quality Hard Shell ~ 3 Features to Look For

I have a very expensive Gortex hard shell I've used for 2 years. It's made by a reputable, well known outdoor brand. The hood visor internal support rim has broken in two (from being folded into my pack). And my arms and wrists have gotten wet, while wearing this fancy "Gortex" jacket in the rain. Whaaaaat? (Not even heavy rain, for goodness sakes... I live in high mountain desert!)

Ain't nobody got time for that.

So, I'm happy to report that jacket will now be replaced by the Mishmi Takin, due to the Virunga's superior fit, feel, and features.



Such a fun day of family skiing at Crested Butte, Colorado!

After a few years of outdoor sports and recreation, I've come to appreciate having just a few key, technical

Take a *Sonnealp Daycation!*

Locals Spa Day Special



Sonnenalp
Hotel

VAIL, COLORADO



AFTERNOONS™

DON'T FORGET YOUR HAT™



pieces. All you really need are some proper, high quality layers... and one fabulous hard shell exterior jacket like the Mishmi Takin Virunga.

Look for a hard shell that will:

1. **Move with you** – You want an excellent fit that will not get in your way, nor restrict or chafe
2. **Keep you dry** – Getting wet while playing on a mountain = no bueno
3. **Breathe well** – Need your sweat to evaporate, so changing weather doesn't lead to discomfort (or even danger)

Although I've only tested it through a winter season, I'm confident the Mishmi Takin Virunga will prove to be an excellent year round workhorse. You can check out both mens and womens available outdoor gear on the **Mishmi Takin technical apparel** sight.



3 Critical Features in a Perfect Hard-Shell Jacket



DIAMONDBACK
BICYCLES

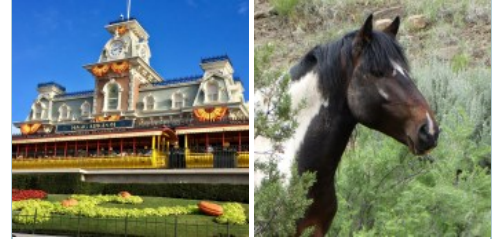
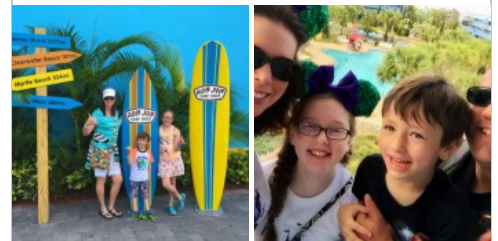


Categories

Categories

(Select Category)

Popular Posts



Disney by land. Disney by sea.
Enjoy 2 Disney vacations in one.

Enjoy a Disney cruise and
a stay at Walt Disney World Resort.

[Learn More](#)



Disney CRUISE LINE

©Disney



o *o* *o*

I was provided a Mishmi Takin jacket at no cost, for the purposes of performing this review. All opinions are my own.

You might also like:



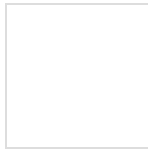
Take It All With You in the Go-To Mom SCOTTeVEST ...



The Merrell Jacket She'll Love



Must-Have KÜHL® Women's Pants and Jacket



Must-Have Fall Gear for the Outdoor Woman

Linkwithin

filed under: outdoor gear reviews, reviews tagged with: breathable jacket, hard shell jacket, hiking gear, jacket, mishmi takin, outdoor gear, ski jacket, skiing gear, technical apparel, virunga

7 Shares 7



About COMtnMom

Hi, I'm Tami! Writer, Influencer, and mom of two who loves travel, the outdoors, staying active, photography, reading books, and eating desserts. We are pretty much always planning our next trip to Disney World.

Speak Your Mind

Large empty text box for comments.

Name *

Email *

Attended:



HYUNDAI NEW THINKING. NEW POSSIBILITIES.

2016 Tucson Media Launch

