

DEKALB COUNTY TREE PROTECTION NOTES:

- 1) ALL TREE PROTECTION AREAS TO BE PROTECTED FROM SEDIMENTATION
- 2) ALL TREE PROTECTION DEVICES TO BE INSTALLED PRIOR TO THE START OF LAND DISTURBANCE AND MAINTAINED UNTIL FINAL LANDSCAPING
- 3) ALL TREE PROTECTION FENCING TO BE INSPECTED DAILY, AND REPAIRED OR REPLACED AS NEEDED.
- 4) NO PARKING, STORAGE OR OTHER CONSTRUCTION ACTIVITIES ARE TO OCCUR WITHIN TREE PROTECTION AREAS.
- 5) ALL REQUIRED VEGETATION MUST BE MAINTAINED FOR TWO GROWING SEASONS AFTER DATE OF FINAL INSPECTION.

TREE DENSITY UNIT PRESERVATION CALCULATIONS

TREES REQUIRED: 30 TREE DENSITY UNITS (TDU) PER ACRE
 TOTAL SITE AREA: 19,151 ACRES
 30 TDU X 19,151 ACRES = 574,530 TDU UNITS REQUIRED

EXISTING TREE DENSITY UNITS ON SITE TO BE SAVED (REFER TO CALC. 3.)
 30753 TDU PER ACRE X 3.45 AC TREE SAVE AREA = 1,060,980 TDU

574,530 TDU REQUIRED TDU - 1,060,980 EXISTING TDU = -486,450 TDU REQUIRED TDU

EXISTING TDU EXCEEDS REQUIRED TDU, THEREFORE, NO NEW TREES REQUIRED TO MEET SITE TREE DENSITY REQUIREMENTS

TREE INCHES PER ACRE PRESERVATION CALCULATIONS

TREES REQUIRED: 120 INCHES PER ACRE
 TOTAL SITE AREA: 19,151 ACRES
 120 INCHES PER ACRE X 19,151 ACRES = 2,298,120 INCHES REQUIRED

EXISTING TREE DENSITY UNITS ON SITE TO BE SAVED (REFER TO CALC. 3.)
 104556 INCHES PER ACRE X 3.45 AC TREE SAVE AREA = 3,607,182 INCHES

2,298,120 INCHES REQUIRED INCHES - 3,607,182 EXISTING INCHES = -1,309,062 INCHES REQUIRED INCHES

EXISTING INCHES EXCEEDS REQUIRED INCHES, THEREFORE, NO NEW TREES REQUIRED TO MEET SITE INCHES PER ACRE REQUIREMENTS

SPECIMEN TREE RECOMPENSE CALCULATIONS

ARBORIST REPORT NO.	SPECIES	DBH
116	NORTHERN RED OAK	30"
113	NORTHERN RED OAK	30"
114	NORTHERN RED OAK	30"

TOTAL CALIFOR RECOMPENSE REQUIRED (1/8 X DBH)
 135"

REQUIRED SPECIMEN TREE REPLACEMENT INCHES: 135 INCHES

REPLACEMENT INCHES PLANTED: 135 INCHES (REFER TO C601)
 SPECIMEN TREE RECOMPENSE REQUIREMENTS ARE MET.

SPECIMEN TREES ARE LISTED ON SHEET C051 - ARBORIST SPECIMEN TREE REPORT.

ARBORGUARD SPECIMEN TREE LEGEND

APPROXIMATE LOCATION OF SPECIMEN TREE NOT SURVEYED/LOCATED PRIOR, TAG #, DBH-SPECIES IDENTIFIED.

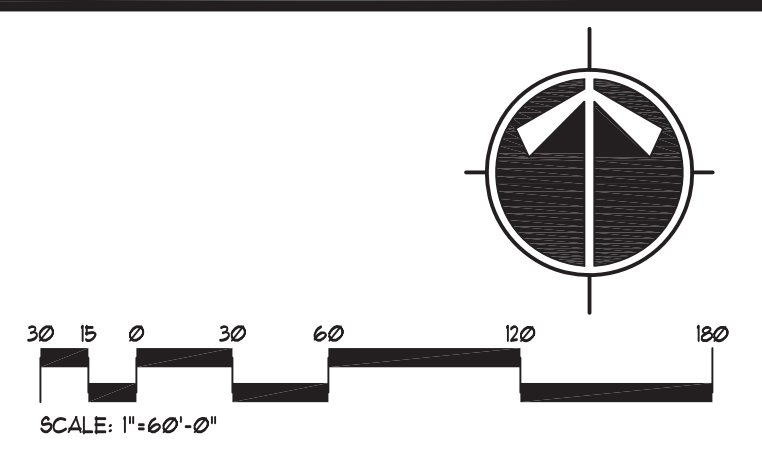
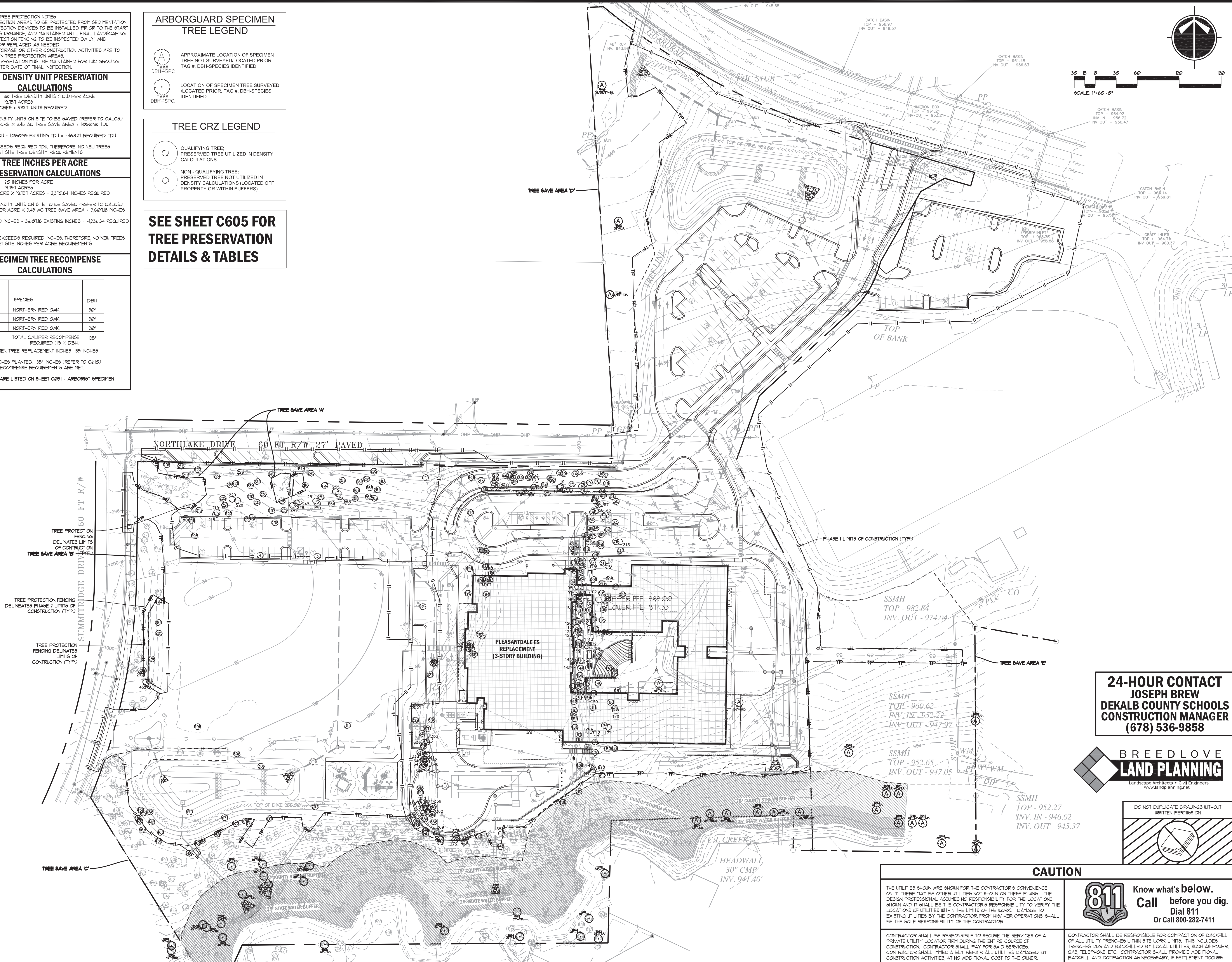
LOCATION OF SPECIMEN TREE SURVEYED/LOCATED PRIOR, TAG #, DBH-SPECIES IDENTIFIED.

TREE CRZ LEGEND

QUALIFYING TREE: PRESERVED TREE UTILIZED IN DENSITY CALCULATIONS

NON-QUALIFYING TREE: PRESERVED TREE NOT UTILIZED IN DENSITY CALCULATIONS (LOCATED OFF PROPERTY OR WITHIN BUFFERS)

SEE SHEET C605 FOR TREE PRESERVATION DETAILS & TABLES



24-HOUR CONTACT
JOSEPH BREW
DEKALB COUNTY SCHOOLS
CONSTRUCTION MANAGER
(678) 536-9858

BREEDLOVE
LAND PLANNING
 Landscape Architects • Civil Engineers
 www.landplanning.net

DO NOT DUPLICATE DRAWINGS WITHOUT WRITTEN PERMISSION

CAUTION

THE UTILITIES SHOWN ARE SHOWN FOR THE CONTRACTOR'S CONVENIENCE ONLY. THERE MAY BE OTHER UTILITIES NOT SHOWN ON THESE PLANS. THE DESIGN PROFESSIONAL ASSUMES NO RESPONSIBILITY FOR THE LOCATIONS SHOWN AND IT SHALL BE THE CONTRACTOR'S RESPONSIBILITY TO VERIFY THE LOCATIONS OF UTILITIES WITHIN THE LIMITS OF THE WORK. DAMAGE TO EXISTING UTILITIES BY THE CONTRACTOR FROM HIS/HER OPERATIONS, SHALL BE THE SOLE RESPONSIBILITY OF THE CONTRACTOR.

CONTRACTOR SHALL BE RESPONSIBLE TO SECURE THE SERVICES OF A PRIVATE UTILITY LOCATOR FIRM DURING THE ENTIRE COURSE OF CONSTRUCTION. CONTRACTOR SHALL PAY FOR SAID SERVICES. CONTRACTOR SHALL IMMEDIATELY REPAIR ALL UTILITIES DAMAGED BY CONSTRUCTION ACTIVITIES, AT NO ADDITIONAL COST TO THE OWNER.

811 Know what's below.
 Call before you dig.
 Dial 811
 Or Call 800-282-7411

CONTRACTOR SHALL BE RESPONSIBLE FOR COMPACTION OF BACKFILL OF ALL UTILITY TRENCHES WITHIN SITE WORK LIMITS. THIS INCLUDES TRENCHES DUG AND BACKFILLED BY LOCAL UTILITIES SUCH AS POWER, GAS, TELEPHONE, ETC. CONTRACTOR SHALL PROVIDE ADDITIONAL BACKFILL AND COMPACTION AS NECESSARY, IF SETTLEMENT OCCURS.



CHAPMAN GRIFFIN LANIER SUSSENBACH ARCHITECTS, INC.
 © 2013

THIS DRAWING, THE DIMENSIONS OF WHICH ARE 30" X 42", IS THE PROPERTY OF CHAPMAN GRIFFIN LANIER SUSSENBACH ARCHITECTS, INC. AND MAY NOT BE USED OR REPRODUCED WITHOUT THEIR WRITTEN PERMISSION.

RELEASED FOR CONSTRUCTION



DATE	NO.	DESCRIPTION
11/16/15		PRELIMINARY GODE SUBMITTAL
1/6/16		80% CD REVIEW & GODE CHECK SET
1/27/16		100% CD REVIEW & GODE FINAL SET
11/9/17		ISSUE FOR PROPOSALS

Pleasantdale Elementary School Replacement - Facility No. 644-5216
 3695 Northlake Drive Doraville, Georgia 30340
 FOR DEKALB COUNTY SCHOOL BOARD, DEKALB COUNTY

TREE PRESERVATION PLAN

PROJECT NO. 12022.07

DATE 1-6-16

SHEET NO. **C600**

CHAPMAN GRIFFIN LANIER SUSSENBACH ARCHITECTS
 2500 Cumberland Pkwy., Suite 350, Atlanta, Georgia 30339. Phone: 404.733.5493 Fax: 404.733.6804

TREE SAVE SUMMARY CALCULATIONS					
TREE SAVE AREA	TOT. DBH	TOT. TDU	ACREAGE	TOT. DBH/AC.	TOT. TDU/AC.
A	290	82	0.126	2301.587	650.794
B	270	85	0.178	1516.854	477.528
C	1679	489.9	0.855	1963.743	572.982
D*	168	47.8	0.879	191.126	54.380
E**	180	54.8	1.412	127.479	38.810
	TOTALS=	3.45	1,220.16	358.90	

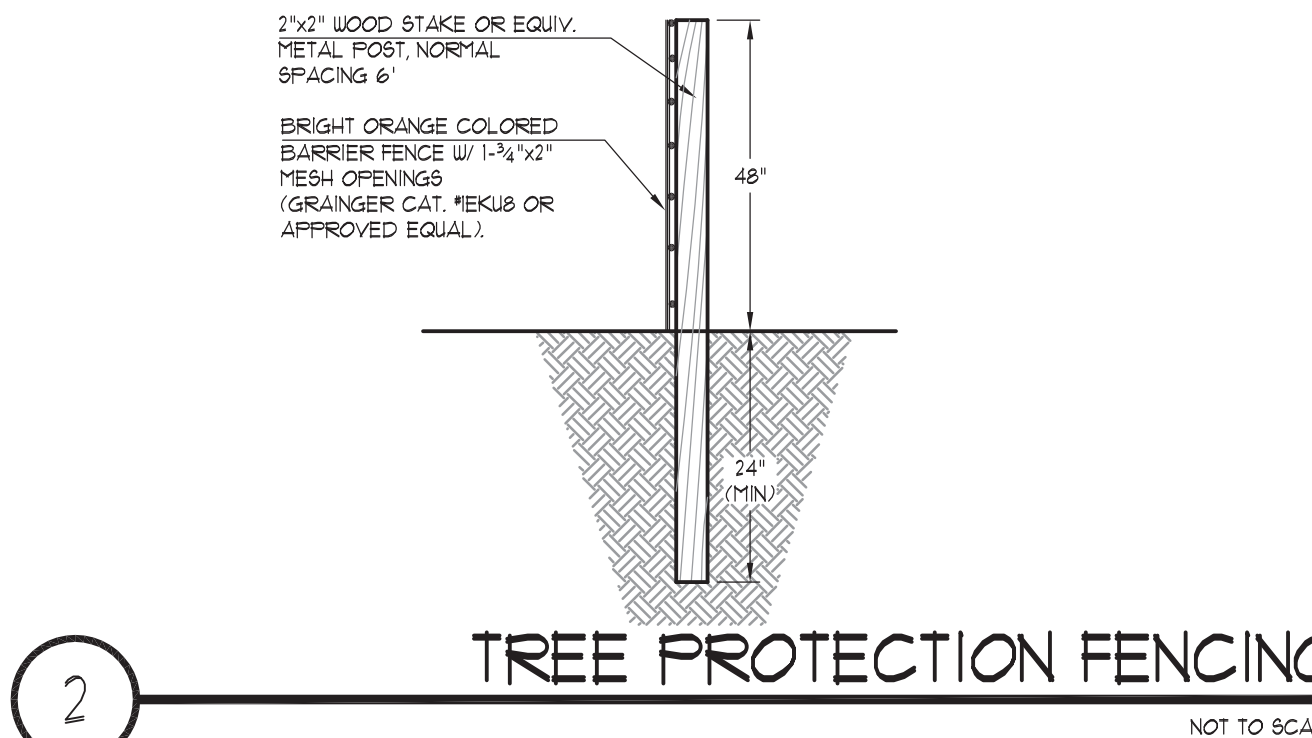
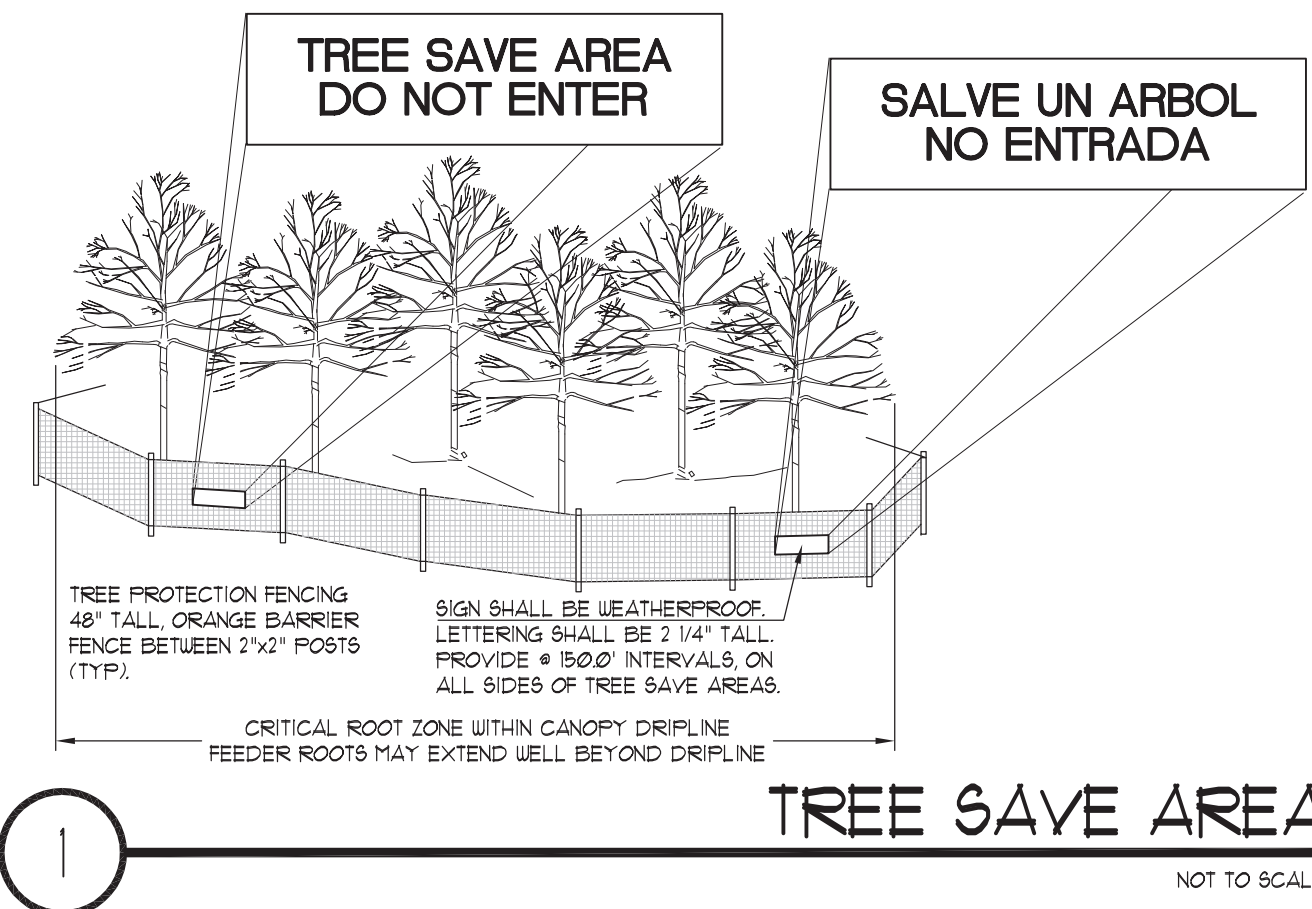
*Based on Sample Plot 1 - See Arborist Tree Assessment Report on Sheet C-051
 **Based on Sample Plot 2 - See Arborist Tree Assessment Report on Sheet C-051

TREE SAVE AREA A			
ID	SPECIES	DBH	TDU
196	PINE	22	6
196	PINE	22	5.4
200	SWEET GUM	8	2.4
201	SWEET GUM	11	3.2
202	SWEET GUM	13	4.8
203	SWEET GUM	15	4
203	SWEET GUM	11	3.2
205	PINE	29	5.2
206	OAK	8	2.4
207	PINE	13	4.8
208	SWEET GUM	11	3.2
209	PINE	22	5.4
212	PINE	22	6
213	PINE	13	4.8
213	CRAPE MYRTLE	6	1.6
234	PINE	13	3.9
235	PINE	13	3.9
241	PINE	13	3.9
292	PINE	15	3.9
	Totals=	290	82

TREE SAVE AREA B			
ID	SPECIES	DBH	TDU
274	HOLLY	6	1.4
271	CRAPE	6	1.6
288	TWIN HARDWOOD	12	4.8
273	TWIN CHERRY	12	3.2
274	OAK	22	6
275	OAK	33	11.8
280	TWIN DOGWOOD	22	6
288	DOGWOOD	6	1.6
288	TWIN CHERRY	17	4.8
286	OAK	12	3.2
289	OAK	9	2.4
290	PINE	21	5.4
291	PINE	9	2.2
453	OAK	45	22
453	PINE	21	5.4
455	OAK	12	3.2
	Totals=	270	85

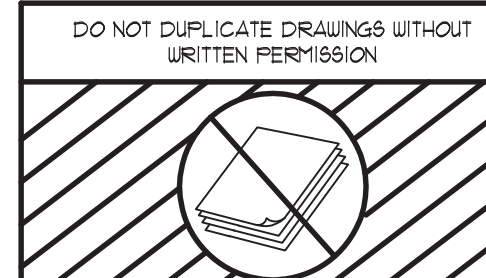
TREE SAVE AREA C			
ID	SPECIES	DBH	TDU
297	OAK	6	1.6
299	OAK	8	2.4
299	OAK	7	2.4
379	PINE	13	3.9
380	PINE	6	2.2
381	PINE	7	2.2
382	SWEET GUM	8	2.4
389	PINE	11	3.1
385	PINE	14	4.8
386	PINE	6	2.2
387	PINE	6	2.2
388	PINE	15	3.9
389	POP	8	2.4
483	OAK	6	2.4
485	PINE	17	4.8
486	PINE	7	2.2
490	SWEET GUM	11	3.2
491	PINE	8	2.2
442	OAK	8	2.4
493	PINE	7	2.2
492	PINE	14	3.9
485	HICKORY	8	2.4
496	SWEET GUM	14	4
497	PINE	13	3.9
498	PINE	11	3.1
492	SWEET GUM	10	3.2
450	SWEET GUM	14	4
451	PINE	17	4.8
472	SYCAMORE	6	2.4
477	OAK	20	6
478	SWEET GUM	11	3.2
478	OAK	7	2.4
490	OAK	11	3.2
491	OAK	6	1.6
498	OAK	8	2.4
493	OAK	38	15.8
493	OAK	7	2.4
485	OAK	20	5.4
497	OAK	14	4
498	SWEET GUM	11	3.2
485	PINE	21	5.4
490	PINE	14	5.4
491	PINE	14	3.9
498	OAK	10	3.2
493	PINE	10	4.8
485	OAK	7	2.4
485	SWEET GUM	6	2.4
496	OAK	10	3.2
497	OAK	6	1.6
498	OAK	8	2.4
485	OAK	7	2.4
505	OAK	11	3.2
501	PINE	21	5.4
502	OAK	21	5.4
503	OAK	8	2.4
503	OAK	17	4.8
505	OAK	8	2.4
535	PINE	12	3.1
536	PINE	6	2.2
537	PINE	15	3.9
538	PINE	12	3.9
545	PINE	6	1.4
591	PINE	6	2.2
561	OAK	13	4
582	PINE	8	2.2
583	PINE	7	2.2
583	OAK	7	2.4
565	PINE	14	3.9
568	PINE	10	3.1
567	PINE	7	2.2
583	PINE	6	2.2

685	PINE	7	2.2
571	OAK	7	2.4
572	PINE	15	3.9
574	PINE	7	2.2
575	OAK	7	2.4
586	PINE	6	1.4
582	OAK	6	1.6
683	PINE	6	1.4
594	PINE	14	3.1
589	PINE	18	3.1
586	PINE	6	1.4
587	PINE	11	3.1
586	PINE	13	3.9
589	OAK	11	3.2
594	OAK	6	1.6
589	OAK	13	4
589	PINE	7	2.2
587	PINE	11	3.1
589	PINE	9	2.2
589	OAK	7	2.4
600	PINE	7	2.2
601	PINE	9	2.2
602	PINE	11	3.1
603	PINE	11	3.1
600	POP	6	1.6
655	OAK	11	3.2
509	OAK	6	1.6
507	OAK	7	2.4
606	OAK	26	7.4
611	OAK	7	2.4
612	OAK	7	2.4
613	OAK	27	6
614	OAK	23	6
615	OAK	7	2.4
641	OAK	7	2.4
642	OAK	23	6
683	OAK	7	2.4
689	OAK	24	6
645	OAK	9	2.4
645	OAK	23	6
652	OAK	21	5.4
683	OAK	7	2.4
654	OAK	9	2.4
655	OAK	7	2.4
589	OAK	15	4
587	OAK	26	4.6
589	OAK	6	1.6
589	OAK	9	2.4
680	OAK	11	3.2
661	POP	35	11.2
589	OAK	7	2.4
692	OAK	38	15.8
693	OAK	24	6
703	OAK	35	13.4
794	OAK	7	2.4
734	PINE	7	2.2
735	PINE	9	2.2
735	PINE	11	3.1
737	PINE	9	2.2
736	PINE	9	2.2
735	PINE	14	4.8
741	PINE	9	2.2
742	PINE	7	2.2
783	PINE	7	2.2
778	PINE	13	3.9
777	PINE	6	1.4
778	PINE	7	2.2
779	PINE	14	3.1
794	OAK	7	2.4
783	OAK	13	4
794	OAK	23	6
	Totals =	1679	489.9



24-HOUR CONTACT
JOSEPH BREW
DEKALB COUNTY SCHOOLS
CONSTRUCTION MANAGER
(678) 536-9858

BREED LOVE
LAND PLANNING
 Landscape Architects • Civil Engineers
 www.landplanning.net



CAUTION

THE UTILITIES SHOWN ARE SHOWN FOR THE CONTRACTOR'S CONVENIENCE ONLY. THERE MAY BE OTHER UTILITIES NOT SHOWN ON THESE PLANS. THE DESIGN PROFESSIONAL ASSUMES NO RESPONSIBILITY FOR THE LOCATIONS SHOWN AND IT SHALL BE THE CONTRACTOR'S RESPONSIBILITY TO VERIFY THE LOCATIONS OF UTILITIES WITHIN THE LIMITS OF THE WORK. DAMAGE TO EXISTING UTILITIES BY THE CONTRACTOR FROM HIS/HER OPERATIONS, SHALL BE THE SOLE RESPONSIBILITY OF THE CONTRACTOR.

CONTRACTOR SHALL BE RESPONSIBLE TO SECURE THE SERVICES OF A PRIVATE UTILITY LOCATOR FIRM DURING THE ENTIRE COURSE OF CONSTRUCTION. CONTRACTOR SHALL PAY FOR SAID SERVICES.

CONTRACTOR SHALL IMMEDIATELY REPAIR ALL UTILITIES DAMAGED BY CONSTRUCTION ACTIVITIES, AT NO ADDITIONAL COST TO THE OWNER.

811 Know what's below.
 Call before you dig.
 Dial 811
 Or Call 800-282-7411

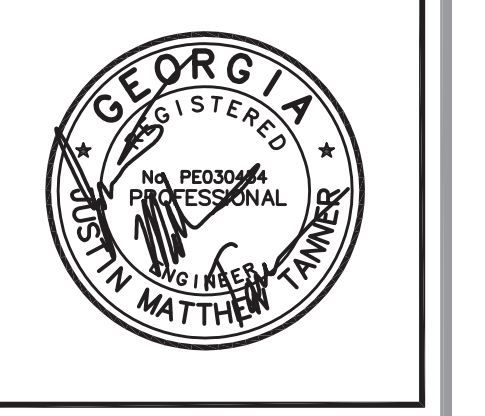
CONTRACTOR SHALL BE RESPONSIBLE FOR COMPACTION OF BACKFILL OF ALL UTILITY TRENCHES WITHIN SITE WORK LIMITS. THIS INCLUDES TRENCHES DUG AND BACKFILLED BY LOCAL UTILITIES, SUCH AS POWER, GAS, TELEPHONE, ETC. CONTRACTOR SHALL PROVIDE ADDITIONAL BACKFILL AND COMPACTION AS NECESSARY, IF SETTLEMENT OCCURS.

Architecture
 Facilitation
 Design

CHAPMAN GRIFFIN LANIER SUSSENBACH ARCHITECTS, INC.
 © 2013

THIS DRAWING, THE DIMENSIONS OF WHICH ARE 30" X 42", IS THE PROPERTY OF CHAPMAN GRIFFIN LANIER SUSSENBACH ARCHITECTS, INC. AND MAY NOT BE USED OR REPRODUCED WITHOUT THEIR WRITTEN PERMISSION.

RELEASED FOR CONSTRUCTION



DATE	NO.	DESCRIPTION
11/16/15		PRELIMINARY GODE SUBMITTAL
1/6/16		80% CD REVIEW & GODE CHECK SET
1/27/16		100% CD REVIEW & GODE FINAL SET
11/9/17		ISSUE FOR PROPOSALS

CHAPMAN GRIFFIN LANIER SUSSENBACH ARCHITECTS
 2500 Cumberland Pkwy., Suite 350 • Atlanta, Georgia 30339 • Phone: 404.733.5493 • Fax: 404.733.6804

Pleasantdale Elementary School Replacement - Facility No. 644-5216
 3695 Northlake Drive Doraville, Georgia 30340
 FOR DEKALB COUNTY SCHOOL BOARD, DEKALB COUNTY

SHEET TITLE
TREE PRESERVATION DETAILS & TABLES

PROJECT NO.
12022.07

DATE
1-6-16

SHEET NO.
C605