

# BOSS-TAB

## Freedom

### Free Standing Assembly Guide



Screw Contents	Item	A	B	C	D
	Quantity	4	1	4	1
	Description	M3x8mm Screw	M4x15mm Hex Screw	M4x10mm Screw	M4x5mm Hex Screw
	Picture				



**0 Optional**  
Feed the tablets charging cord through the pole.

**1** Using the 4 M3x8mm screws (**Item A**) screw the hinge to the pole.

**2** Place the plastic hinge cap over the top of the joint.  
If it doesn't sit flush then remove the cap and install it the other way.

**3** Install the security screw using the allen key (**Item B**).

**4** Screw in the baseplate using the 4 M4x10mm screws (**Item C**).  
If you are installing a charging cable, make sure it is fed through the front side of the stand.



**5** Place the rear tablet bracket on the stand.  
Wipe down the bracket and tablet using the alcohol wipe.

**6** 2 Adhesives are included, easy to remove 3M command strips, and a stronger more permanent adhesive. Select the one you want to use and stick the adhesive onto the bracket.

**7** Remove the adhesive backing from the other side of the adhesive and carefully attach the tablet. Be sure to line the tablet up correctly, keep in mind how it will look in both portrait and landscape.

**8** Screw in the rear security screw using the security key (**Item D**).

**9** Attach the charging cable if needed. The installation is now complete.

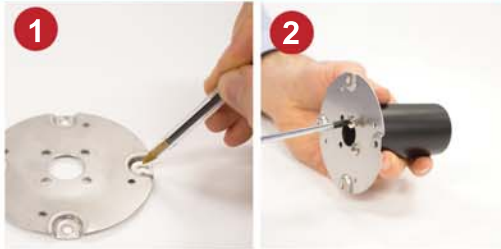
# Freedom

## Fixed Mount Assembly Guide



### STEP 1 - MOUNTING OPTIONS

#### OPTION 1 - SCREWED FROM ABOVE DESK



Using the metal base plate as a template, mark out and drill the 4 outer holes and center hole for power cable.

Using the 4 M4x8mm screws (Item A) screw the base plate to the pole.



Using either M4x25mm (Item B) or M4x10mm (Item C) screws, install the base plate to the mounting surface.

Slide the plastic base cover over the pole. If you are installing a charging cable install feed it through now.

#### OPTION 2 - SCREWED FROM BELOW DESK



Using the metal base plate as a template, mark out and drill the 4 inner holes and center hole for power cable.



Using the M4x40mm cross truss screws and washers (Item D), secure the pole to the table. If you are installing a charging cable install feed it through now.

### STEP 2 - TABLET STAND ASSEMBLY



Using the 4 M3x8mm screw (Item E) screw the hinge to the pole.



Place the plastic hinge cap over the top of the joint. If it doesn't sit flush remove the cap and install it the other way.



Install the security screw using the allen key (Item F).



Place the rear tablet bracket on the stand. Wipe down the bracket and tablet using an alcohol wipe.



2 adhesives are included. Easy to remove command stripe (as pictured above), and a stronger harder to remove adhesive. Select the one you want to use and stick it onto the bracket.



Remove the adhesive backing from the other side of the adhesive and carefully attach the tablet. Be sure to line the tablet up correctly, keep in mind how it will look in both portrait and landscape.



Screw in the rear security screw using the allen key (Item G).



Attach the charging cable if needed. The installation is now complete.

#### Screw Contents

Item	Q'ty	Description	Picture
A	4	M4X8mm	
B	4	M4X25mm	
C	4	M4X10mm	
D	4	M4X40mm	
E	4	M3X8mm	
F	1	M4X15mm Hex	
G	1	M4X5mm Hex	