



ELECTRONIC COPY

LABORATORY GROWN DIAMOND REPORT

March 29, 2022
 IGI Report Number **LG522241617**
 Description **LABORATORY GROWN
DIAMOND**
 Shape and Cutting Style **ROUND BRILLIANT**
 Measurements **7.30 - 7.34 X 4.42 MM**

GRADING RESULTS

Carat Weight **1.44 CARAT**
 Color Grade **E**
 Clarity Grade **VS 1**
 Cut Grade **IDEAL**

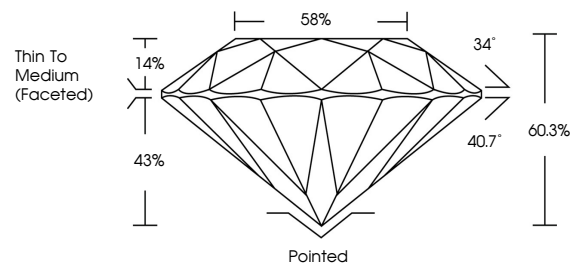
ADDITIONAL GRADING INFORMATION

Polish **EXCELLENT**
 Symmetry **EXCELLENT**
 Fluorescence **NONE**
 Inscription(s) **LABGROWN IGI LG522241617**

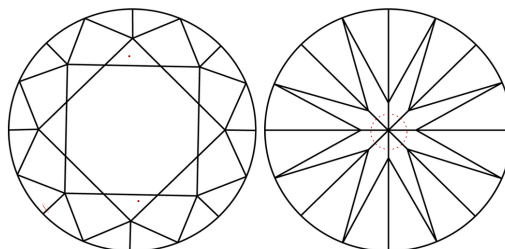
Comments: HEARTS & ARROWS
 As Grown - No indication of post-growth treatment
 This Laboratory Grown Diamond was created by
 Chemical Vapor Deposition (CVD) process
 Type IIa

LG522241617

PROPORTIONS

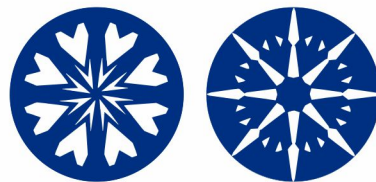


CLARITY CHARACTERISTICS



KEY TO SYMBOLS

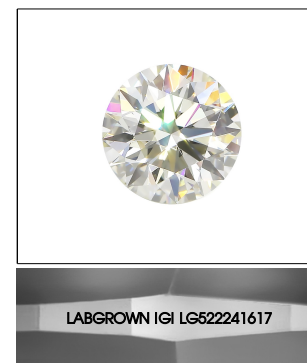
Red symbols indicate internal characteristics.
 Green symbols indicate external characteristics.



www.igi.org

GRADING SCALES

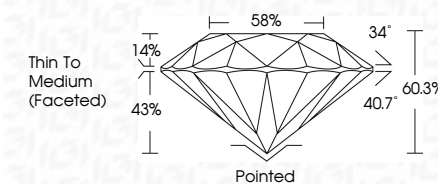
COLOR GRADING SCALE	CL	NC	FT	VLT	LT	
	COLORLESS D-F	NEAR COLORLESS G-J	FAINT K-M	VERY LIGHT N-R	LIGHT S-Z	
CLARITY (10x) GRADING SCALE	FL	IF	VVS	VS	SI	I
	FLAWLESS INTERNALLY FLAWLESS	VERY VERY SLIGHTLY INCLUDED	VERY SLIGHTLY INCLUDED	SLIGHTLY INCLUDED	INCLUDED	



LASERSCRIBESM

Sample Image Used

March 29, 2022
 IGI Report Number **LG522241617**
 Description **LABORATORY GROWN
DIAMOND**
 Shape and Cutting Style **ROUND BRILLIANT**
 Measurements **7.30 - 7.34 X 4.42 MM**
GRADING RESULTS
 Carat Weight **1.44 CARAT**
 Color Grade **E**
 Clarity Grade **VS 1**
 Cut Grade **IDEAL**



ADDITIONAL GRADING INFORMATION

Polish **EXCELLENT**
 Symmetry **EXCELLENT**
 Fluorescence **NONE**
 Inscription(s) **LABGROWN IGI LG522241617**

Comments: HEARTS & ARROWS
 As Grown - No indication of post-growth treatment
 This Laboratory Grown Diamond was created by
 Chemical Vapor Deposition (CVD) process
 Type IIa



IGI

March 29, 2022
 IGI Report No **LG522241617**
ROUND BRILLIANT
7.30 - 7.34 X 4.42 MM
 Carat Weight **1.44 CARAT**
 Color Grade **E**
 Clarity Grade **VS 1**
 Cut Grade **IDEAL**
 Depth **60.3%**
 Table **58%**
 Girdle **Thin To Medium (Faceted)**
 Culet **Pointed**
 Polish **EXCELLENT**
 Symmetry **EXCELLENT**
 Fluorescence **NONE**
 Inscription(s) **LABGROWN IGI LG522241617**
Comments: HEARTS & ARROWS
 As Grown - No indication of post-growth treatment
 This Laboratory Grown Diamond was created by Chemical Vapor Deposition (CVD) process
 Type IIa

