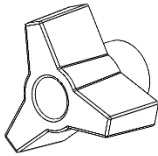


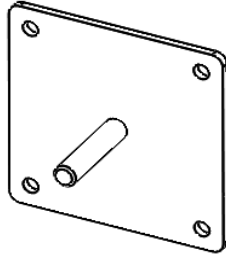
## Crate Fan Installation Instructions



### Included in Kit:



57715K23-0.25-20  
Wing Nut  
(2 supplied)



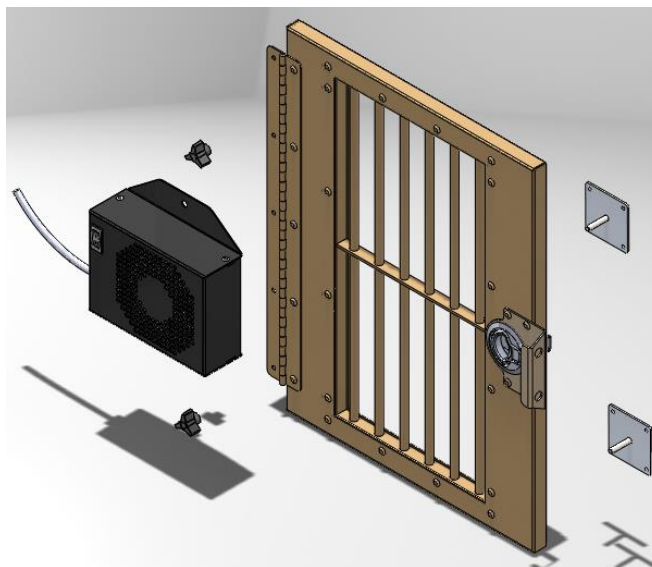
Crate Fan Brackets  
(2 Supplied)



Crate Fan

**Required tools not supplied: Hands.**  
**Before Starting–Remove everything from carton**

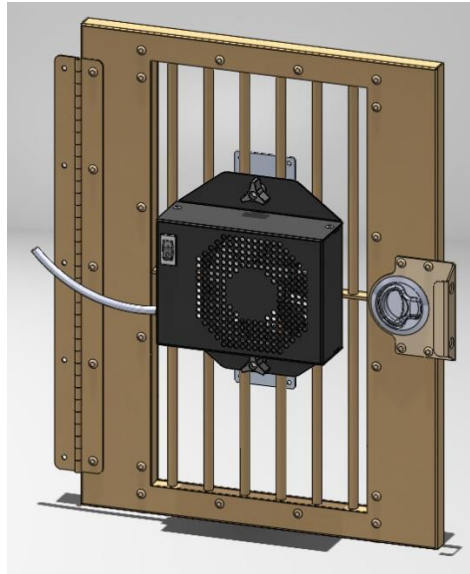
**Step 1: Place Crate Fan on front of the Dog Crate Door as shown. Place (1) bracket on the back of the door (dog side) with the studs facing outward, insert stud through hole on flange of crate fan. Apply wingnut, loosely at this point.**



**Step 2: Place second bracket, opposite side, insert bolt through hole in flange, and apply second wingnut, loosely.**

**Step 3: Place Crate Fan in final position and tighten both wingnuts in place.**

**Step 4: Plug in your fan, turn on the switch and let your dog enjoy the breeze!**



**Step 5: CONGRATULATIONS! Your installation is complete!**

**A word of CAUTION: Now that your crate fan is secured to the door, periodically check and/or re-tighten wing nuts as vibration could cause them to loosen.**

