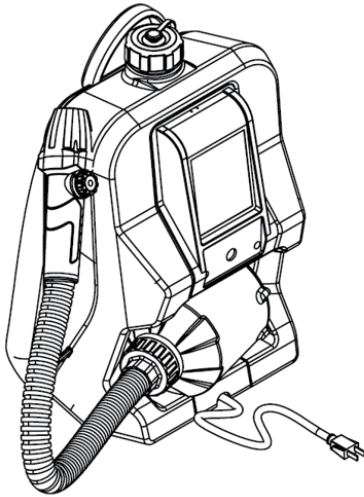
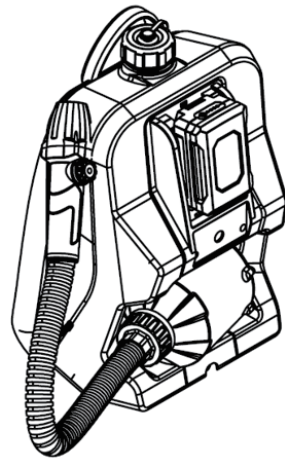




Backpack Fogger Operator's Manual



AC



DC



WARNING:

Read carefully and understand all **INSTRUCTIONS** before operating. Failure to follow the safety rules and other basic safety precautions may result in serious personal injury.

Save these instructions in a safe place and on hand so that they can be read when required. Keep these instructions to assist in future servicing.



WARNING

Before application, customer must read this instruction manual carefully. If any doubt, please contact our company directly (1-866-493-0524). We are free from any accident due to improper operation when using this product. Failure to observe these instructions could lead to serious injury or death.

1. NO direct spraying highly toxic pesticides, undiluted pesticides, banned pesticides and special chemicals. It should comply with the safety instructions provided by the pesticide manufacturers when treating of pesticides.
2. On security grounds, the chemical tank cannot be added into inflammable and explosive, highly volatile special chemicals, such as gasoline, alcohol, phenylacetone etc. Cannot add highly corrosive liquid, such as caustic soda solution, hydrochloric acid etc. In case of injury or fire and other major security incidents. (Warning: Keep the machine dry, wet hands are prohibited to operate the power switch, to avoid electric shock.)
3. The machine can only be operated by a person who is familiar with the performance and operation method of the machine, and has the knowledge of relevant safety operation, the following personnel operation is PROHIBITED strictly.
 - 3.1 Children or the elderly.
 - 3.2 Mental illness or sick deformed and weak people.
 - 3.3 Drinking people.
4. Do not use insoluble powder with this sprayer. The solid matter is easy to block the screen and hose to pump. Do not operate with strong acids, strong based or flammable liquids. Do not use high-resistant and very toxic pesticides for pest controlling purposes on vegetables, fruit trees and plants. Don't spraying towards others face.
5. Do not operate sprayer in temperatures exceeding 113°F(45°C) or lower than 14°F(-10°C)
6. Trial spraying with clean water is necessary for initial use to make sure no light leakage or poor atomization occurs.
7. It is strictly prohibited to keep this sprayer near fire or expose the base to water or immerse the sprayer in the water to clean or to fill it with water.
8. Wear a mask and gloves to protect skin and to avoid direct contact with pesticides or harmful liquids. Do not spray pesticides against the wind of spray towards humans, animals or food. Do not operate for extended periods of time under high temperatures.
9. After spraying, please make use to treat the waste according to the manual provide by the pesticide manufacture to protect the environment.

TECHNICAL DETAILS

Type	AC	DC
Tank Capacity	3Gal. / 11.5L	3Gal. / 11.5L
Rated Voltage	120V 60Hz/230V 50Hz AC	48V DC
Motor Power	2HP (1.4KW)	1/2HP (350W)
Particle Size	0-50µm	0-50µm
Max Flow Rate	0.2Gal. / min. (750 ML /min)	0.17Gal. / min. (670 ML /min)
Horizontal Coverage	26ft.	26ft.

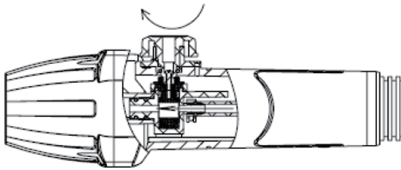
APPLICATION

The sprayer has the advantages of high efficiency, uniform droplet, long spray range, supporting with high-performance motor, stable performance, reliable and durable. It is specially applied for large area spraying operation of greenhouse. It can also be used for Public sanitation and disinfection, such as airports, docks, hotels, restaurants, hospitals, public transport, theaters, communities, entertainment. As well as food processing, pharmaceutical companies, animal husbandry industry's Disinfection and sterilization, Health and epidemic prevention.

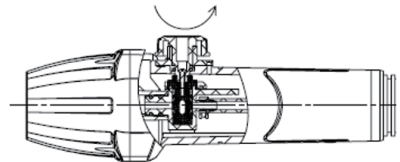
OPERATION

(AC&DC)

1. Preparation: Plug into power; turn on the power switch to check the motor if running
2. Add the chemical after filtered with the filter funnel, tighten the tank lid as required.
3. Turn on the power supply and valve, the fogger starts working.
4. Turn off the power supply and valve, the fogger stops working.
5. During the sprayer working, the high-speed gas flow will cause the gun and pipe heating, it is a normal phenomenon.

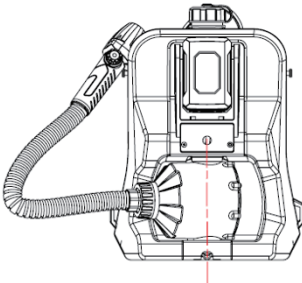


Turn on the power supply and valve

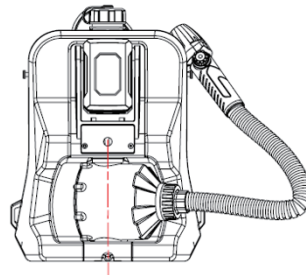


Turn off the power supply and valve

The direction of the nozzle can be adjusted



Left-handed operation



Right-handed operation

WARNING

USE DIRECTION

1. The supply voltage should match the machine's requirements.
2. Do not make the power wire knotted and pull off forced; Prevent breakage of wire core and circuit broken; Avoid the sharp objects to scratch the cable insulation layer and cause leakage.(AC)
3. Do not make the pipe folded and extruded, avoid the metal or other sharp objects puncture the pipe.
4. Do not turn on and off power switch frequently, avoid damage the switch and motor. When there is abnormal sound or small during working, shut down immediately, cut off the power, and contact professional personnel to repair. If cannot resolve the problem locally, please contact our company directly (1-866-493-0524), non-professionals is strictly prohibited disassemble.

BATTERY USE AND CARE WARNINGS (DC)

1. Battery must be fully charged before first use.
2. Plug the charger into a 110-240 AC outlet, a red light should appear on the charger. Charge the battery until the light on the charger turns solid green.
3. Always charge the battery at room temperature. If the battery is used in a cold environment, allow it to warm up for at least an hour before charging. Cold batteries will not be charged completely and battery components may be damaged.
4. Only charge battery in well ventilated area away from flammable materials such as cloth or carpeting.
5. To disconnect charger, remove the plug from outlet, then disconnect the charger from the battery.
6. DO NOT leave the charger being connected to the battery for more than 24 hours.
7. The battery status indicator is mounted on the top of the battery to allow you to observe the level of the battery power while in use. To check the charge level, simply press the indicator button. The lights on the status indicator show the charge level of the battery.
8. If battery becomes warm or hot during charging procedure, disconnect it from charger. Allow battery to return to room temperature, and attempt to charge again. If this persists a second time, disconnect battery from charger and contact customer service.
9. Battery Maintenance Responsibility: Fully charge and discharge the battery at least once every 8 months to maintain battery's health.
10. Store the battery on a full charge.
11. When battery pack is not in use, keep it away from other metal objects like paper clips, coins, keys, nails, screws, or other small metal objects that can make a connection from one terminal to another. Shorting the battery terminals together may cause burns or fire.

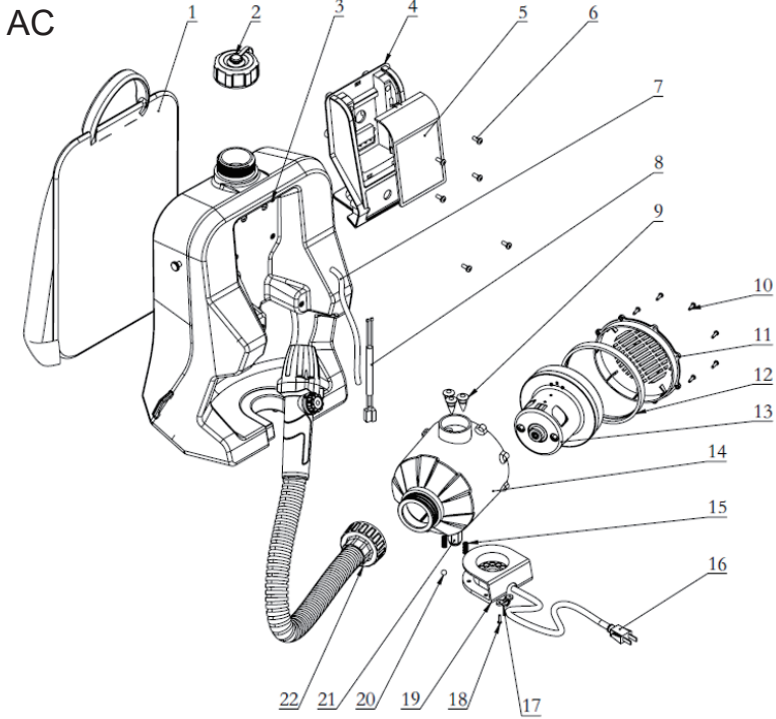
TROUBLE SHOOTING

Problem	Possible Cause	Corrective Action
Fan not running.	Power supply is not connected.	1. Check battery whether there is electricity. 2. Whether the power switch is on or not.
Machine run, no spray.	1. Chemical tube or valve blocked. 2. Chemical tube or tank inflatable tube folded. 3. Chemical tube fell off. 4. The air inlet blocked.	1. Clean up or replace. 2. Check and correct the chemical tube or tank inflatable tube. 3. Reset the chemical tube. 4. Clean up and clear the air inlet.
Intermittent spray, small spray.	1. Chemical tube blocked, 2. Chemical tube folded. 3. Chemical tube damaged. 4. Chemical tube fell off.	1. Clean up the chemical tube. 2. Correct the chemical tube. 3. Replace the chemical tube. 4. Reset the chemical tube.
Machine abnormal sounds.	1. The air inlet blocked. 2. Motor bearing damaged or carbon brush run out.	1. Clean up and clear 2. Repair or replace the motor.
Poor atomization, spray nozzle dripping.	1. Adjusting nut turned too large. 2. The air inlet blocked.	1. Turn down the adjusting nut. 2. Clean up and clear.
Sprayer temperature too high.	1. Continuous working too long. 2. Supply voltage not match. 3. The air inlet or outlet blocked. 4. The motor seriously worn.	1. Stop working for a while. 2. Select reasonable voltage. 3. Clean up and clear. 4. Repair or replace the motor.

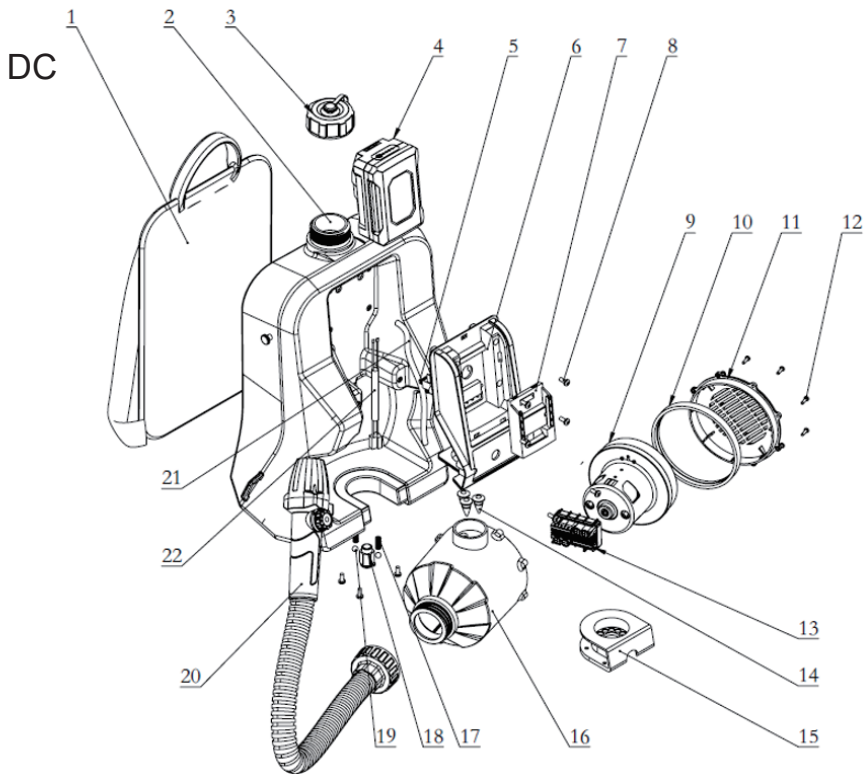
MAINTENANCE AND STORAGE

1. If not using for long time under the high humidity environment or in hot and rainy season, it should always turn on for warm-up to eliminate humidity, prevent internal corrosion damage.
2. If not using for long time, please keep in dry and cool place, do not let children play with the machine, to avoid danger.
3. Keep the machine dry, wet hands are prohibited to operate the power switch, to avoid electric shock.
4. When the machine is placed to add liquid chemical, avoid dumping, particular attention during transportation.
5. After spraying the chemicals, please clean the tank with water. If spraying the herbicide, please add detergent to clean completely. When finish spraying, the sprayer should be clean and keep in a cool dry place to prevent direct sunshine and accelerated plastic aging.

EXPLODED AND PARTS LIST



Part No.	Description	Q'ty	Part No.	Description	Q'ty
1	Strap	1	12	Fan seal	1
2	Barrel cover	1	13	AC fan assembly	1
3	Barrel body	1	14	Fan housing	1
4	Battery holder	1	15	Spring	2
5	Battery cover	1	16	Plug wire assembly	1
6	Screw	10	17	Line card	1
7	Ventilation pipe	1	18	Screw	2
8	Connector	1	19	Base	1
9	Rubber plug	3	20	Steel ball	2
10	Screw	8	21	Line card	1
11	Fan back cover	1	22	Sprinkler components	1



Part No.	Description	Q'ty	Part No.	Description	Q'ty
1	Strap	1	12	Screw	8
2	Barrel body	1	13	Controller	1
3	Barrel cover	1	14	Rubber plug	3
4	Battery	1	15	Base	1
5	Plug	1	16	Fan housing	1
6	Battery holder	1	17	Spring	2
7	Card slot	1	18	Line card	1
8	Screw	10	19	Steel ball	2
9	DC fan assembly	1	20	Sprinkler components	1
10	Screw	1	21	Ventilation pipe	1
11	Fan back cover	1	22	Connector	1



Great Circle USA
Support Line: 1-866-493-0524
help@greatcircleus.com
www.greatcircleus.com