



Professional Cord Reel Instruction Manual



WARNING:

Read carefully and understand all **INSTRUCTIONS** before operating. Failure to follow the safety rules and other basic safety precautions may result in serious personal injury. Save these instructions in a safe place and on hand so that they can be read when required. Keep these instructions to assist in future servicing.



GENERAL SAFETY REGULATIONS

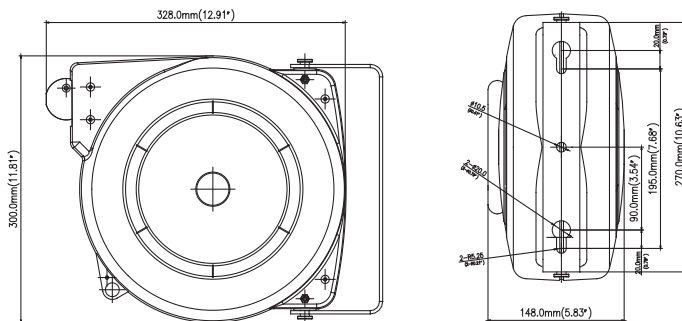


WARNING: The warnings, cautions, and instructions discussed in this instruction manual cannot cover all possible conditions or situations that could occur. It must be understood by the operator that common sense and caution are factors that cannot be built into this product, but must be supplied by the operator.

1. Keep the work area clean and dry. Damp or wet work areas can result in injury.
2. Keep children away from work area. Do not allow children to handle this product.
3. Use the right tool for the job. Do not attempt to force small equipment to do the work of larger industrial equipment. There are certain applications for which this equipment was designed. It will do the job better and more safely at the capacity for which it was intended. Do not modify this equipment, and do not use this equipment for a purpose for which it Was not intended.
4. Check for damaged parts. Before using this product, carefully check that it will operate properly and perform its intended function. Check for damaged parts and any other conditions that may affect the operation of this product. Replace damaged or worn parts immediately.
5. Do not overreach. Keep proper footing and balance at all times to prevent tripping, falling, back injury, etc.
6. DO NOT use the equipment when tired or under the influence of drugs, alcohol, or medication. A moment of inattention while operating this equipment may result in serious personal injury

TECHNICAL DETAILS

Item No.	Type	Number of Core	Cord Length	Volt	AWG	Ampere
CR605153	SJT/SJTOW	3	50ft.	125V	16	10A
CR605132	SJT/SJTOW	3	40ft.	125V	14	13A
CR605131	SJT/SJTOW	3	40ft.	125V	12	15A



Before using this product, carefully read this general safety rules and instruction listed below. Before starting work, make sure that you know how to stop reel in the event of emergency. Any other use could damage the product or cause serious injury.

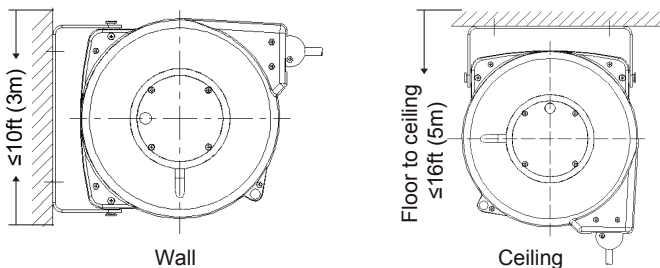
Keep these instructions in a safe place and on hand so that they can be read when required.

SAFETY PRECAUTIONS

- 1) Ensure that only the qualified electrician can installs/services this cable reel. And it must not be used by children or unskilled persons.
- 2) Ensure that power supply voltage does not exceed maximum voltage rating of reel.
- 3) Ensure that reel is properly be installed before connecting to power supply.
- 4) Ensure that all electrical power is removed from reel before servicing.
- 5) Check for frayed and broken wires before each use.
- 6) When pull electrical cord from the reel always grasp the electrical cord itself, not the work device.
- 7) Remove power from the reel immediately when any malfunction occurs.
- 8) Never remove tamper with or cut out the safety devices fitted by the manufacture.
- 9) Do not use the reel in damp or wet conditions. Keep the work area is clean. Avoid put in sundries in cord reel.

INSTALLATION

- 1) The cord reel must be installed in premises conforming to current regulation and standards covering electrical systems and work environments.
- 2) Secure the cord reel to the wall and the ceiling according to the installation diagrams. Using screw anchors or suitable screws which must be fitted in the holes in the brackets.



- 3) Adjust the cord stopper to the suitable position when required.

OPERATION

1. Check reel for correct operation by slowly pulling out the cord. A “clicking” noise will be heard every half revolution of the drum.
2. To latch the reel, pull out the cord and allow it to retract after hearing the first, second or third “click”.
3. To unlatch, slowly pull out the cord until the “clicking” noise stops, then let the cord retract until the cord stopper rests against the cord guide.

Note: To avoid damage to the reel, always hold on to the cord while it is rewinding.

MAINTENANCE

1. Make sure the cord is in proper working order and that the insulation is not cut or worn as this could represent a hazard and jeopardize operation.
2. Clean the cord with a cloth dipped in warm water to remove dirt or deposits and ensure correct rewinding.
3. Do not use detergents or solvents which could prove incompatible with cord-winder materials.
4. If the event of having to perform maintenance on the electrical, mechanical parts or replace the cord, contact an authorized after-sale service center.
5. Dismantling of the unit by unskilled personal could prove hazardous; the risk involved mainly concern the preloaded springs.

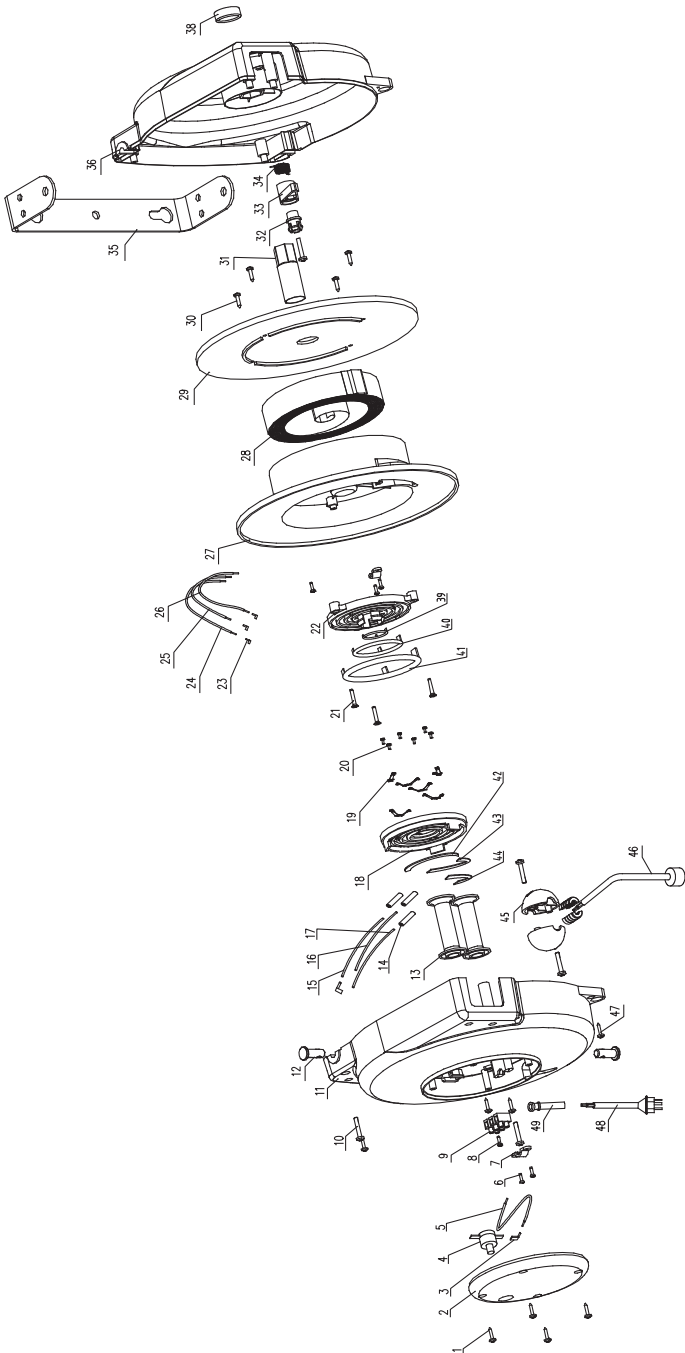
LIMITED WARRANTY

1. The manufacturer warrants this cord reel against defects in material and craftsmanship, for a period of 12 months from date of purchase.
2. Manufacturer's liability is limited to replacement or repair of defective material within the warranty period, when returned freight prepaid to the distributor or their designated service depot.
3. The warranty does not cover damage caused by accident, misuse or faulty installation.
4. The reel must be installed and maintained in compliance with the instructions.

TROUBLE SHOOTING

Problem(s)	Solution(s)
Cord will not fully retract.	Call an authorized technician for service to add tension to the reel's internal spring.
Cord will not retract at all.	Call an authorized technician for service.
No electrical power at output end of cord.	Check all connections ensuring they are properly wired. Press the reset button on the side of the reel case.

EXPLODED AND PARTS LIST



Part No.	Description	Q'ty	Part No.	Description	Q'ty
1	Screw ST4.2×33.5	8	25	Connect wire(yellow/green)	1
2	Plastic cover	1	26	Connect wire(blue)	1
3	Termination 6.3	2	27	Drum	1
4	Thermal cut-out	1	28	Spring	1
5	Connect wire(brown)	1	29	Drum	1
6	Screw ST2.9×9.5	4	30	Screw ST4.2×19	4
7	Cord clamp	2	31	Axle	1
8	Screw ST2.9×14	2	32	Ratchet axle	1
9	Terminal block	2	33	Ratchet paw	1
10	Screw M5×25	2	34	Spring	1
11	Cover	1	35	Bracket	1
12	Pin	2	36	Cover	1
13	Roller	2	38	Plastic cover	1
14	Shrinkable tube	3	39	Slip ring	1
15	Connect wire(brown)	1	40	Slip ring	1
16	Connect wire(yellow/green)	1	41	Slip ring	1
17	Connect wire(blue)	1	42	Half copper ring	1
18	Fixed plate	1	43	Half copper ring	1
19	Touch slice	6	44	Half copper ring	1
20	Copper rivet	6	45	Stop block	2
21	Screw ST4.2×22	3	46	Inlet,flexible cord	1
22	Movable plate	1	47	Screw ST4.2×16	1
23	Termination 4.8	3	48	Outlet,flexible cord	1
24	Connect wire(brown)	1	49	Protect sheath	1



Intradin (Shanghai) Machinery Co., Ltd.
iti-fluid@intradinchina.com
www.intradin.com