

# MUSTART



# USER MANUAL

EV Charging Station

© 2017 MUSTART. All Rights Reserved.



**For any product issue, you may contact our customer service at**

**[cs@mustartpower.com](mailto:cs@mustartpower.com)**

**[www.mustartpower.com](http://www.mustartpower.com)**

Read all instructions before using this product.

Save these instructions.

This manual contains important instructions for the MUSTART Wall Charger that shall be followed during installation, operation, and maintenance.

Please review all warnings and cautions before installing and using the Wall Charger.

## Warnings

- ▲ The charger is designed only for vehicles that are compatible with the SAEJ1772 AC Level 2 charging standard.
- ▲ Never leave children unattended while the vehicle is charging and never allow children to play with the charger cable.
- ▲ To reduce the risk of electrical shock, connect only to properly grounded outlets.
- ▲ Using with a worn or damaged AC outlet may cause burns or start a fire.  
If the AC wall plug feels hot while charging, unplug the unit and replace the AC outlet.
- ▲ To avoid risk of fire or electric shock, do not use this device with an extension cord.
- ▲ Risk of explosion. This equipment has arcing or sparking parts that should not be exposed to flammable vapors.
- ▲ Risk of electric shock. Do not remove cover or attempt to open the enclosure of the charger unit.
- ▲ No user serviceable parts inside. Refer servicing to qualified service personnel.
- ▲ Unit will attempt to reset in fault conditions.
- ▲ This device is intended only for charging vehicles not requiring ventilation during charging.
- ▲ When transporting the charger, handle with care and do not subject it to strong force, drag or step on the charger.
- ▲ Incorrect installation and testing of the charger could potentially damage either the vehicle's battery and/or the charger itself. Any resulting damage is excluded of the warranty for the charger.
- ▲ Turn off input power at the circuit breaker before cleaning the charger.
- ▲ Use the charger only within the specified operating parameters.
- ▲ This equipment should be installed, adjusted, and serviced by qualified electrical personnel familiar with the construction and operation of this type of equipment and the hazards involved. Failure to observe this precaution could result in death or severe injury.
- ▲ Confirm with the local electrical requirements for the gauge, temperature rating, and type of wire material used for the over current rating.
- ▲ Lock out all electrical source circuit feeding the charging unit in the open position before beginning wiring or terminations. Failure to follow the instructions could result in severe bodily injury or death.
- ▲ Ensure that the charge cable is positioned so it will not be stepped on, tripped over, or subjected to damage or stress. If the plug provided does not fit the outlet, do not modify the plug, arrange for a qualified electrician to inspect the outlet.
- ▲ Do not touch the charger end terminals with sharp metallic objects.

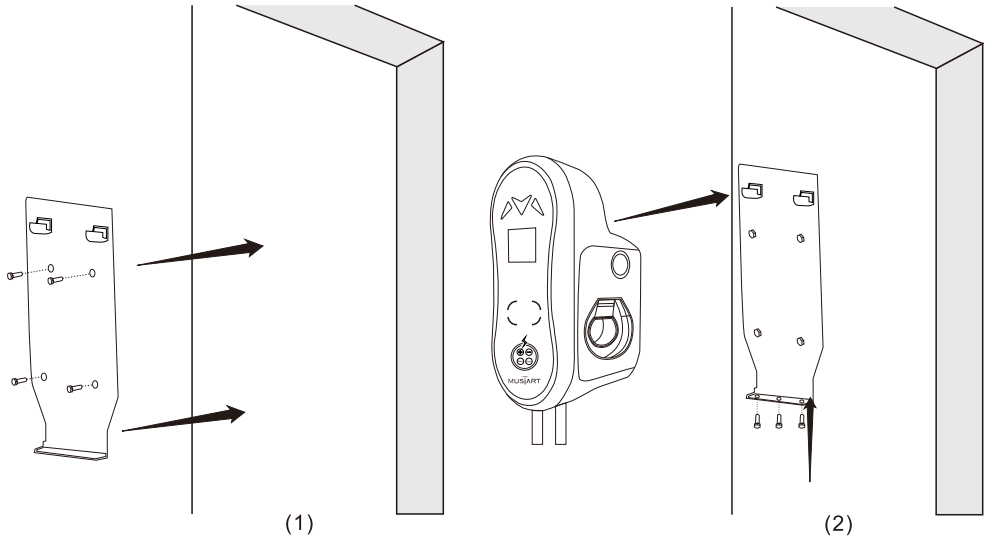
- ▲ Do not forcefully pull the charge cable or damage it with sharp objects.
- ▲ Do not insert foreign objects into any part of the Charging vehicle connector.
- ▲ Ensure that the charge cable is positioned so it will not be stepped on, tripped over, or subjected to damage or stress. If the plug provided does not fit the outlet, do not modify the plug, arrange for a qualified electrician to inspect the outlet. Incorrect installation and testing of the charger could potentially damage either the vehicle's battery and/or the charger itself. Any resulting damage is excluded of the warranty for the charger.
- ▲ Do not operate the charger in temperatures outside its operating range of -22°F (-30°C) to 122°F (50°C).
- ▲ Do not use this product if the EV cable is frayed, has damaged insulation, or any other sign of damage.
- ▲ Do not use this product if the enclosure or the EV connector is broken, cracked, open, or shows any other indication of damage.
- ▲ Do not install or use the charger near flammable, explosive, harsh, or combustible materials, chemicals, or vapors.
- ▲ Do not use the charger if it is defective, appears cracked, frayed, broken or otherwise damaged, or fails to operate.
- ▲ Do not attempt to open, disassemble, repair, tamper with, or modify the charger. The charger is not user serviceable. Contact Mustart for any repairs.
- ▲ Do not use the charger when either you, the vehicle, or the charger is exposed to severe rain, snow, electrical storm or other severe weather.

## Product Specifications

<b>Product Model</b>	MT-32A-AC0650 MT-32A-AC1450
<b>Voltage and Wiring</b>	240V
<b>Current Output Range</b>	16/25/32amps
<b>Maximum Output Power</b>	7kW
<b>Circuit Breaker Requirements</b>	40A Circuit Breaker
<b>Frequency</b>	50Hz±5%
<b>Cable Length</b>	24.6 ft (7.5m)
<b>Weight (including wirebox)</b>	11.5 lb (5.2kg)
<b>Operating Temperature</b>	-22° F to 122° F (-30° C to 50° C)
<b>Storage Temperature</b>	-40° F to 185° F (-40° C to 85° C)
<b>Plug</b>	NEMA 6-50 or NEMA 14-50
<b>IP Class for EVSE Enclosure</b>	IP65
<b>IP Class for SAE J1772 Connector</b>	IP67
<b>Meets Standards</b>	SAE J1772 IEC 62196-2

## Installation Instructions

- 1.Install the stainless steel plate, fix it to a flat wall or pillar.
- 2.Hang the wall charger on the steel plate(1), then set screws ai the bottom(2).



## Adjustable Maximum Current Output

MUSTART charging station features the ability to adjust the maximum Charging Station current output to support 16A, 25A, or 32A Dedicated Circuit ratings as follows:

Circuit Rating	Max output	Power output at 240 volts
40A	32A	7.68 KW
30A	25A	6.00 KW
20A	16A	3.84 KW

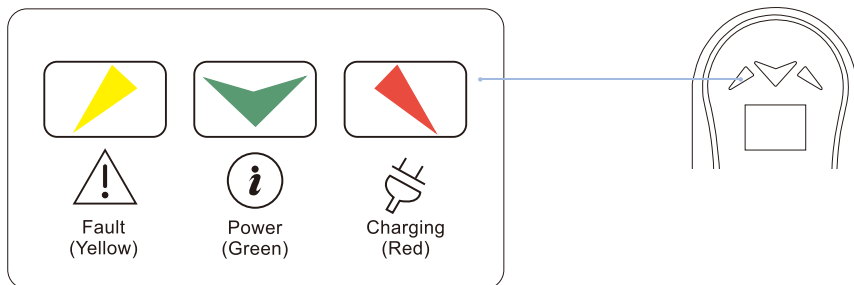
## Product Overview

EV Charger Station External Components

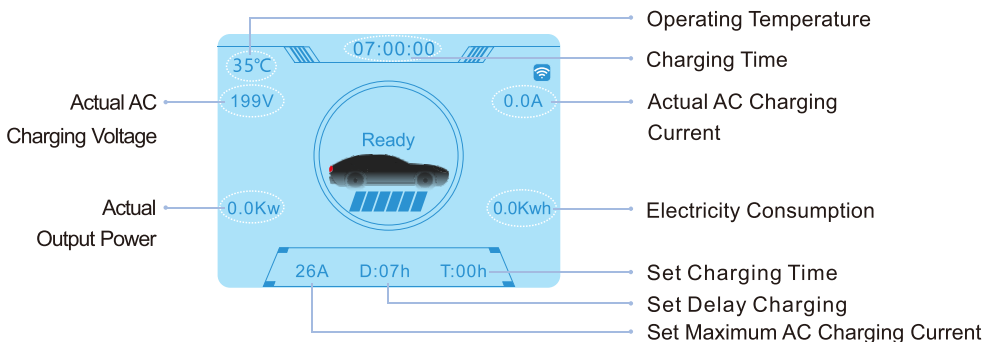
- 1.LED Indicator
- 2.Display Screen
- 3.Swipe Card Area
- 4.Control Panel
- 5.EV Connector
- 6.Emergency Button



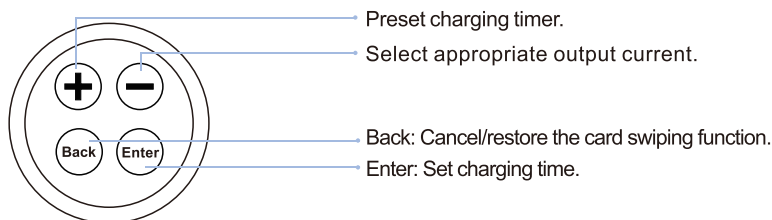
## LED Light Display



## Control Box Lcd Screen Display



## Button Introduction



## Operation Option Settings

### Touch The Button To Switch Current


1. Turn on the air switch, do not plug the spear head into the vehicle.
2. Click the **⊖** button to switch the charging current synchronously, providing three current switching of 16A/25A/32A.

(Current dynamics are changed in real time according to the latest national standards.)


### Touch The Button To Schedule Charging

1. Turn on the air switch, do not plug the spear head into the vehicle.
2. Press the **⊕** button to schedule charging, it's able to schedule 0/1/2/3/4.../15 hours before charging.

### Touch The Button To Charge Regularly

1. Turn on the air switch, do not plug the spear head into the vehicle.
2. Press the  button to charge regularly, it's able to charge 0/1/2/3/4.../15 hours regularly.

### Touch The Button To Cancel/Recover Swiping

1. Turn on the air switch, do not plug the spear head into the vehicle.
2. Long press the  indicator button for 10 seconds, when the display shows "Swipe RFID off" , swipe the card to cancel the card swiping function; When the display shows "Swipe RFID on" , swipe the card to restore the card swiping function.

## Control Box LED Light Display Status

LED State	Fault(Yellow)	Power(Green)	Charging(Red)
Ready	Off	On	Off
EV Connected	Off	Slow Flash	Off
CP Error	Off	Fast Flash	Off
Charging	Off	Pulsing	On
Charge Complete	Off	Flash	Off
Fault	Flash	Off	Off

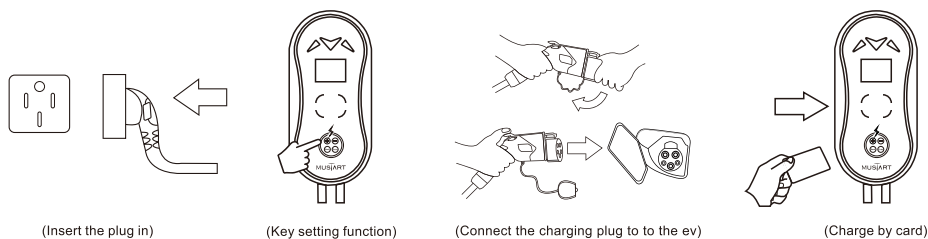
**Note :** When an “Error Reset” appears , press and turn the red button to reset the charger.

### Please Note Before Start Charging:

Make sure that the charger is free from any abnormal conditions, such as laceration, rust, rupture breakage of charging ports, cables, control boxes, wires, and plug surfaces. Please do not use this charger if the socket is damaged, rusted, cracked or loosely connected. Do not start using if the plug is dirty or wet. Wipe with a clean and dry cloth to make sure it is dry and free of dirt. Make sure that the plug at the power supply end is consistent with the power supply socket before charging.

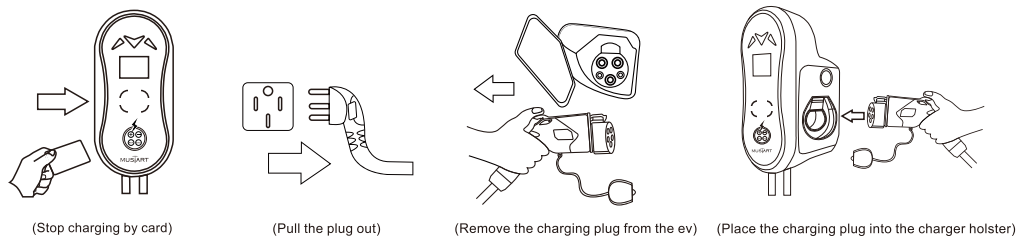
## How to Charge an Electric Vehicle

1. Connect the power supply.
2. Set the EV Charger parameters before connecting to the car pore.  
(It can be set at any time when using the mobile APP.)
- 3.Remove the charging cable tip from the side of the controller, and insert the charging cable tip into the vehicle charging port completely (Make sure that the gun tip is fully inserted into the socket until you hear a "click" sound).
- 4.After the charging status shows "Ready", swipe the card in the card slot to start charging.  
(Designated matching card is required.)
- 5.When the red light is always on and the green light flashes in a breathing mode, which means the charging device runs automatically and you can not change the charging parameters .



## How To Stop Charging

1. Swipe the card in the swiping slot to stop charging. (Designated matching card is required.)
2. Unlock the vehicle, press and hold the button to pull out the charging nozzle from the base of the charging car, and put the charging cable nozzle back to the side of the controller.
3. Turn off the air switch.



## Remote Control Charging

### (1) Application Download

Download the Tuya Smart App in the app store (common for Android and iOS systems).

### (2) Configure Charging Device Network

Make sure that the charging device and the mobile phone are in the same Wifi network (5G band Wifi is not currently supported) and that you are near the charging device. When the device is powered on, the Tuya Smart APP is opened, and the network status of the charging device is displayed as follows, it indicates that the network configuration operation is required. (1)

After the charging device is successfully connected to the network, the network status of the charging device is displayed as follows (2):

The network has been configured successfully, but the Wifi is not connected to the Internet. The network status of the charging device is displayed as follows (3):



Tuya Smart



(1)



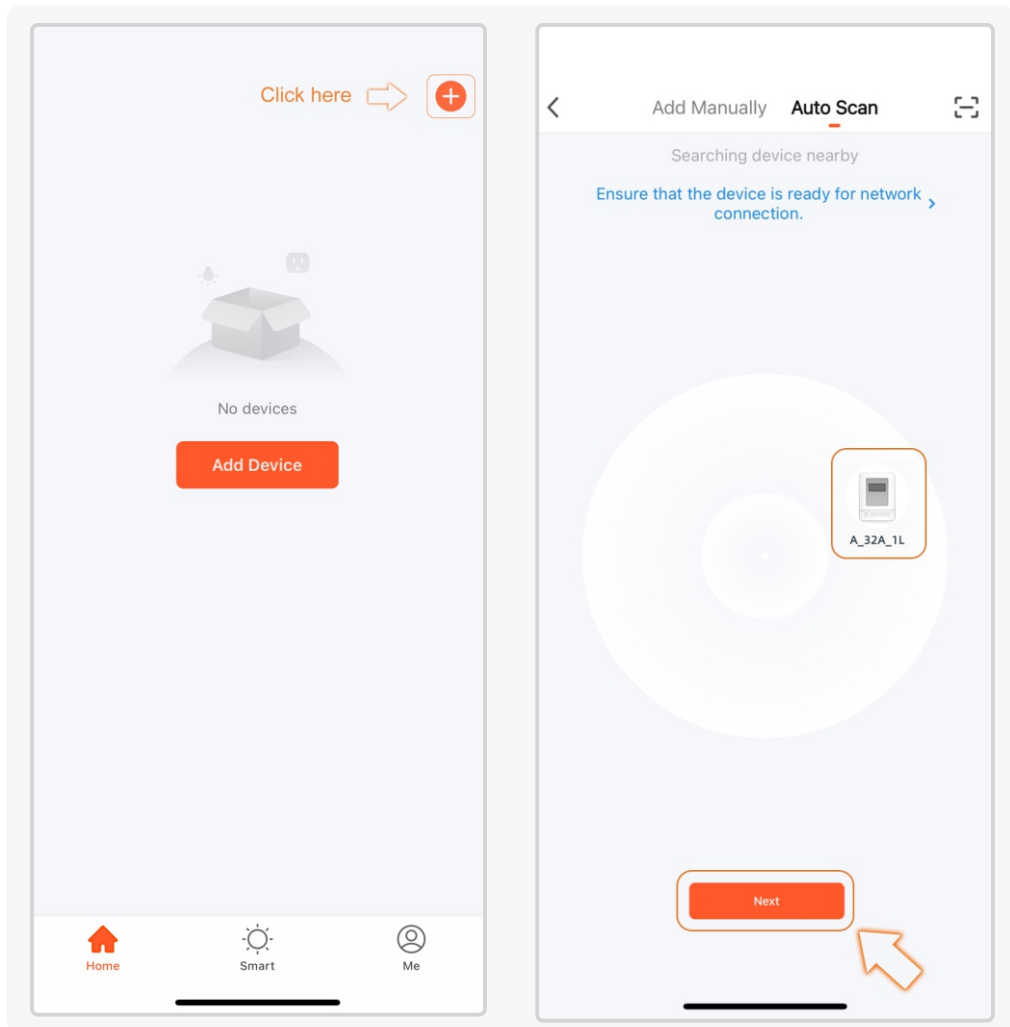
(2)



(3)

The following is a demonstration of the distribution network operation process:

1. Open the Tuya SmartApp, touch the plus sign in the upper right corner, and automatically discover the device, open the permissions, and start searching, as follows:
2. Enter the device's working Wifi and password, wait for the charging device to be successfully added to the network, and enter the App charging display interface.





3. If there is a timeout during the network configuration process, or the network configuration fails. Please check whether the Wifi network has been connected to the network and the router is working in the 2.4G frequency band or the mobile device is too far away from the charging device, which causing the Bluetooth connection to fail. If this is the case, Repeat the above operations to successfully configure the network. If the problem still cannot be solved, please contact customer service for processing.

Cancel

### Choose Wi-Fi and enter password

ChinaNet-2.4G-FAB3

\_\_\_\_\_

Select WiFi and enter its password.

Found 1 devices. Added 0 successfully.

A\_32A\_1L

The charging device is connected.

## MUSTART

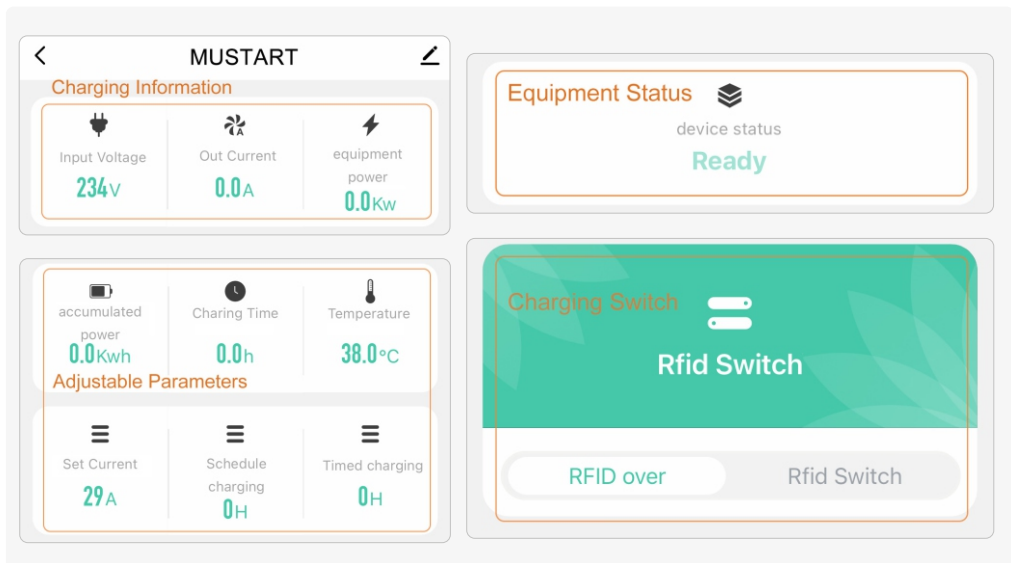
Input Voltage 234v	Out Current 0.0A	equipment power 0.0Kw
accumulated power 0.0kwh	Charing Time 0.0h	Temperature 38.0°C
Set Current 29A	Schedule charging 0H	Timed charging 0H

device status  
Ready

### Rfid Switch

RFID over      Rfid Switch

### (3) Introduction of APP Charging Operation Interface



### (4) APP Charging Interface Operation

Before starting charging, please make sure that the charging gun is plugged into the vehicle. In the icon in the upper right corner of the charging display interface, there are functions such as device information, offline reminders, and sharing devices. Users can operate by themselves if they need to use them.

Note: After clicking the remove device button at the bottom, the network needs to be reconfigured. This operation can be performed when changing the home Wifi password or changing the device user.

## Warranty & Service Policy

Our Mustart Wallbox EV Charging Station is warranted to be free of defects in material and workmanship for a period of 3 years from the date of original purchase.

If the warrantied products are defective in workmanship and/or materials, you can simply give us a call or email us and send the defective product back. Please click in [www.mustartpower.com/pages/value-warranty](http://www.mustartpower.com/pages/value-warranty) to fill in your correct order number to register your warranty and download your Electronic User Manual.