



## Grease Dispense Valve Instruction Manual

---



---

### **WARNING:**

Read carefully and understand all **INSTRUCTIONS** before operating. Failure to follow the safety rules and other basic safety precautions may result in serious personal injury. Save these instructions in a safe place and on hand so that they can be read when required. Keep these instructions to assist in future servicing.

---



## GENERAL SAFETY REGULATIONS



**WARNING:** The warnings, cautions, and instructions discussed in this instruction manual cannot cover all possible conditions or situations that could occur. It must be understood by the operator that common sense and caution are factors that cannot be built into this product, but must be supplied by the operator.

1. Keep the work area clean and dry. Damp or wet work areas can result in injury.
2. Keep children away from work area. Do not allow children to handle this product.
3. Use the right tool for the job. Do not attempt to force small equipment to do the work of larger industrial equipment. There are certain applications for which this equipment was designed. It will do the job better and more safely at the capacity for which it was intended. Do not modify this equipment, and do not use this equipment for a purpose for which it was not intended.
4. Check for damaged parts. Before using this product, carefully check that it will operate properly and perform its intended function. Check for damaged parts and any other conditions that may affect the operation of this product. Replace damaged or worn parts immediately.
5. Do not overreach. Keep proper footing and balance at all times to prevent tripping, falling, back injury, etc.
6. DO NOT use the equipment when tired or under the influence of drugs, alcohol, or medication. A moment of inattention while operating this equipment may result in serious personal injury.

## TECHNICAL DETAILS

Item No.	Inlet Connection	Pressure Range
18212010	3/8" BSP	600Bar
18212030	3/8" NPT	8700Psi
18212050	1/4" BSP	600bAR
18212070	1/4" NPT	8700Psi

Wetted parts: Chrome vanadium, polyurethane, brass, carbon, steel, alloy steel.

### Warning Symbol



**WARNING:** This symbol alerts you to the possibility of serious injury or death if you do not follow the instructions.

### Caution Symbol



**CAUTION:** This symbol alerts you to the possibility of damage to or destruction of equipment if you do not follow the instructions.

### Equipment misuse hazard

Equipment misuse can cause the equipment to rupture or malfunction and result in serious injury.

1. This equipment is for professional use only.
2. Read all instruction manuals, tags, and labels before operating the equipment.
3. Use the equipment only for its intended purpose. If you are not sure, call your distributor.
4. Do not alter or modify this equipment.
5. Do not exceed the maximum working pressure of the lowest rated system component. This equipment has a 9000psi (60Mpa, 600bar) maximum working pressure.
6. Check equipment daily. Repair or replace worn or damaged parts immediately.
7. Handle hoses carefully. Do not pull on hoses to move equipment.
8. Route hose away from traffic areas, sharp edges, moving parts, and hot surfaces. Do not expose hoses to temperatures above 66 °C(150°F) or below -40 °C(-40°F).
9. Comply with all application local, state, and national fire, electrical, and safety regulations.
10. Do not use a low pressure flexible extension on a high pressure dispensing valve.
11. Do not attempt to force lubricant into a fitting.

### Injection hazard

Spray from the valve, leaks or ruptured components can inject fluid into your body and cause extremely serious injury, including the need for amputation. Fluid splashed in the eyes or on the skin can also cause serious injury.

1. Fluid injected into the skin might look like just a cut, but it is a serious injury. Get immediate medical attention.
2. Do not point the valve at anyone or at any part of the body.
3. Do not put your hand or fingers over the grease fitting coupler.
4. Do not stop or deflect leaks with your hand, body, glove or rag.
5. Tighten all fluid connections before operating the equipment.
6. Check the hose, tubes, and couplings daily. Replace worn or damaged parts immediately. Do not repair high pressure couplings; you must replace the entire hose.

### Toxic fluid hazard

Hazardous fluid or toxic fumes can cause serious injury or death if splashed in the eyes or on the skin, inhaled, or swallowed.

1. Know the specific hazards of the fluid you are using.
2. Store hazardous fluid in an approved container. Dispose of the hazardous fluid according to all local, state and national guidelines.
3. Always wear protective eyewear, gloves, clothing and respirator as recommended by the fluid and solvent manufacturer.

## PRESSURE RELIEF PROCEDURE

### Injection hazard

Fluid under high pressure can be injected through the skin and cause serious injury. To reduce the risk of an injury from injection, splashing fluid, or moving parts, follow the pressure relief procedure whenever you:

1. are instructed to relieve the pressure,
2. stop dispensing,
3. Check or service any of the system equipment,
4. install or clean the nozzle.

To reduce the risk of serious bodily injury, including fluid injection, splashing in the eyes or on the skin, or injury from moving parts, always follow this procedure whenever you shut off the pump, and before inspecting, removing, cleaning or repairing any part the pump or system.

1. Close the supply pump's bleed-type master air valve (required in pneumatic systems).
2. Open the dispensing valve until pressure is fully relieved.
3. Open the fluid drain valve at the pump fluid outlet. Leave the drain valve open until you are ready to use the system again.

### Notes:

If you suspect the dispensing valve, extension or grease fitting coupler is clogged, or that pressure has not been fully relieved after following all the previous steps, using a rag very slowly loosen the coupler or hose end coupling and allow pressure to be relieved gradually, then loosen the part completely. Now clear the clog.

## OPERATION

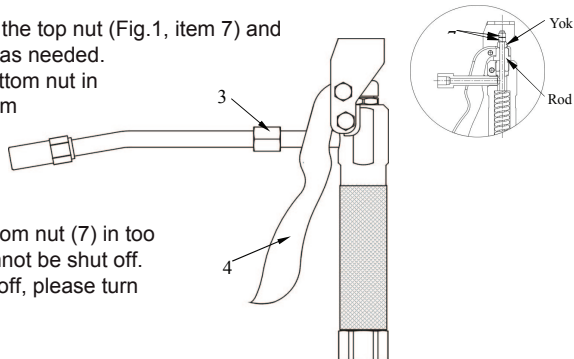
This dispense valve provides positive control of high pressure lubricants. When supplied with air, the pump will start when the valve is triggered and will stall against pressure when the trigger is released.

## ADJUSTMENT

To reduce the risk of serious injury whenever you are instructed to relieve pressure, always follow the pressure relief procedure on page 3.

1. Relieve the pressure.
2. To adjust the clearance, loosen the top nut (Fig.1, item 7) and turn the bottom nut (7) in or out as needed.

To increase grease flow turn bottom nut in  
to reduce grease flow turn bottom nut out. Hold the bottom nut in place and securely tighten the top nut.



**CAUTION:** Do not turn bottom nut (7) in too much, or else the valve cannot be shut off. If the valve cannot be shut off, please turn the bottom nut (7) out a bit.

## SERVICE

To reduce the risk of serious injury whenever you are instructed to relieve pressure, always follow the pressure relief procedure on page 3.

1. Relieve the pressure.
2. Check all parts thoroughly when disassembling, and carefully replace any that are worn or damaged.
3. Remove bottom seat adapter (19) from grease gun body (12). See parts listing on page 6.
4. Remove nut (5) and bolts (11) from trigger guard (6). Remove trigger guard (6).
5. Remove outlet adapter (3).
6. Remove hex nut (7).
7. Remove Yoke (8).
8. Remove rod guide (9) from grease gun body (12).
9. Push plunger rod (14) through seal (10). Be careful; seat (14), ball (16) and copper gasket (17) will fall out bottom.
10. Replace all parts included in service kit.
11. Reassemble valve.

To reduce the risk of serious injury after servicing valve, always make sure the valve is in the closed position with trigger released.

12. With trigger in free position tighten bottom nut (7) until yoke bottoms out on rod guide, see Fig.1, (this is the maximum flow setting). Back off nut approximately 1/8 turn. Hold bottom nut in place and securely tighten on page 4.
13. If additional adjustment is desired, follow adjustment procedure on page 4.
14. For specific operation problems, see trouble-shooting guide on page 5.

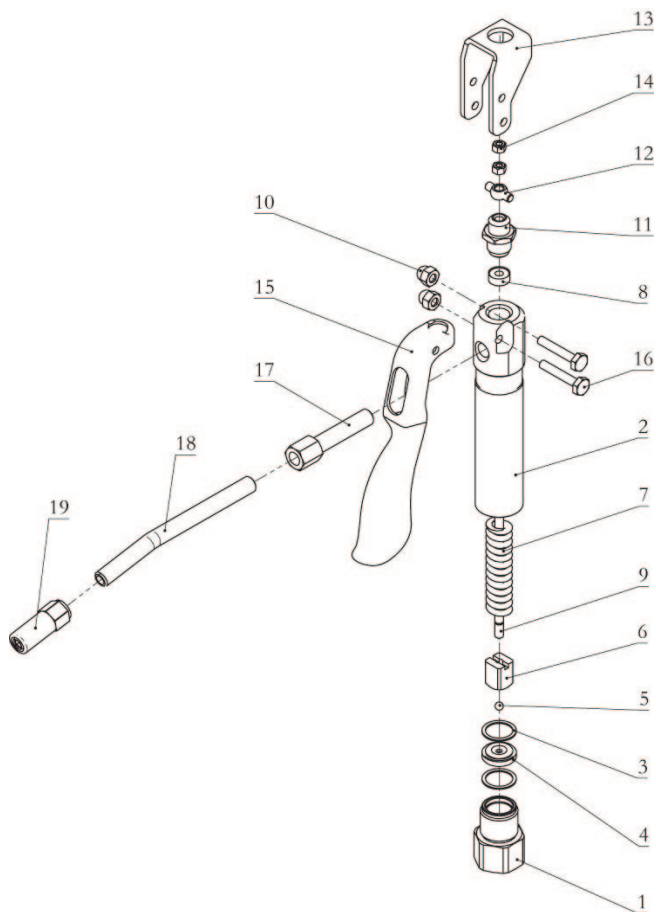
## TROUBLE SHOOTING

Problem(s)	Possible Cause	Solution
Grease flows with trigger released	Damaged ball Damaged seat Out of adjustment Missing ball	Install service kit Install service Kit Readjust (see Fig.1) Install service kit
No grease flow when trigger pulled	Out of adjustment Plugged seat Disassembled plunger and rod	Readjust (see Fig.1) Clean seat Reassemble
Grease leaking out of bottom of gun	Loose bottom adapter Missing copper gaskets Worn copper gaskets	Tighten adapter (see Fig.1) Install service kit Install service kit
Grease leaking out the top of gun	Worn seal in top of the gun	Install service kit
Short seal life	Worn plunger rod	Install service kit
Trigger will not move	Bent guard Bent pivot pin Damaged handle	Replace guard Install service kit Replace trigger

## LIMITED WARRANTY

1. The manufacturer warrants this product against defects in material and craftsmanship, for a period of two years from date of purchase, but not including seal parts.
2. Manufacturer's liability is limited to replacement or repair of defective material within the warranty period, when returned freight prepaid to the distributor or their designated service depot.
3. The warranty does not cover damage caused by accident, misuse or faulty installation.
4. The product must be installed and maintained in compliance with the instructions.

## EXPLODED AND PARTS LIST



Part No.	Description	Q'ty	Part No.	Description	Q'ty
1	Seat adapter	1	11	Guide, rod	1
2	Grease gun body	1	12	Yoke	1
3	Copper gasket	2	13	Trigger guard	1
4	Valve seat	1	14	Hex nut	2
5	Steel ball	1	15	Trigger	1
6	Plunger	1	16	Screw	2
7	Compression spring	1	17	Outlet adapter	1
8	Seal	1	18	Rigid tube	1
9	Plunger rod	1	19	Coupler	1
10	Nut	2			





Intradin (Shanghai) Machinery Co., Ltd.  
iti-fluid@intradinchina.com  
www.intradin.com