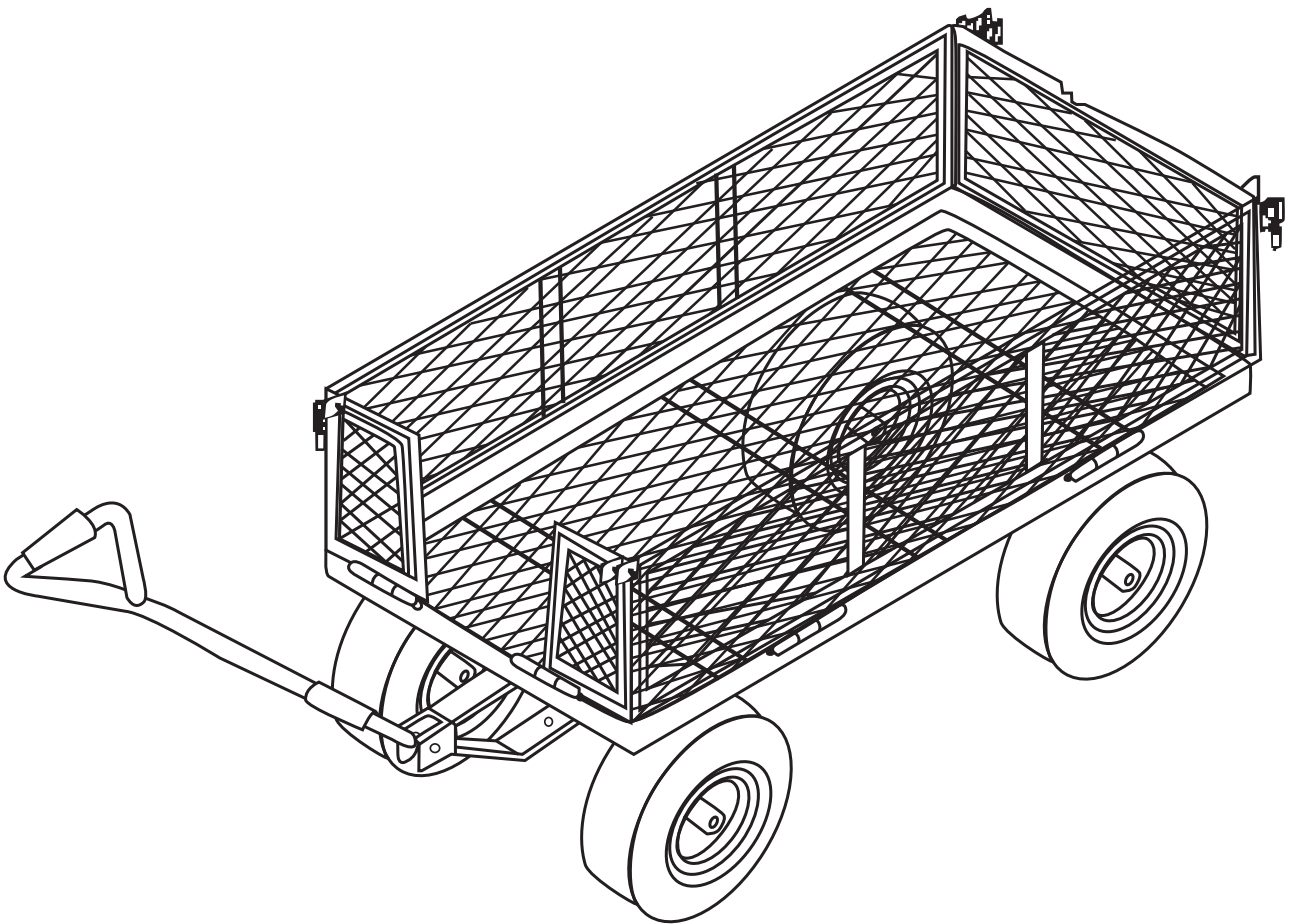


# LandWORKS

## 400 lb Capacity Instruction Manual

---



**WARNING:**

Read carefully and understand all **INSTRUCTIONS** before operating. Failure to follow the safety rules and other basic safety precautions may result in serious personal injury. Save these instructions in a safe place and on hand so that they can be read when required. Keep these instructions to assist in future servicing.

---



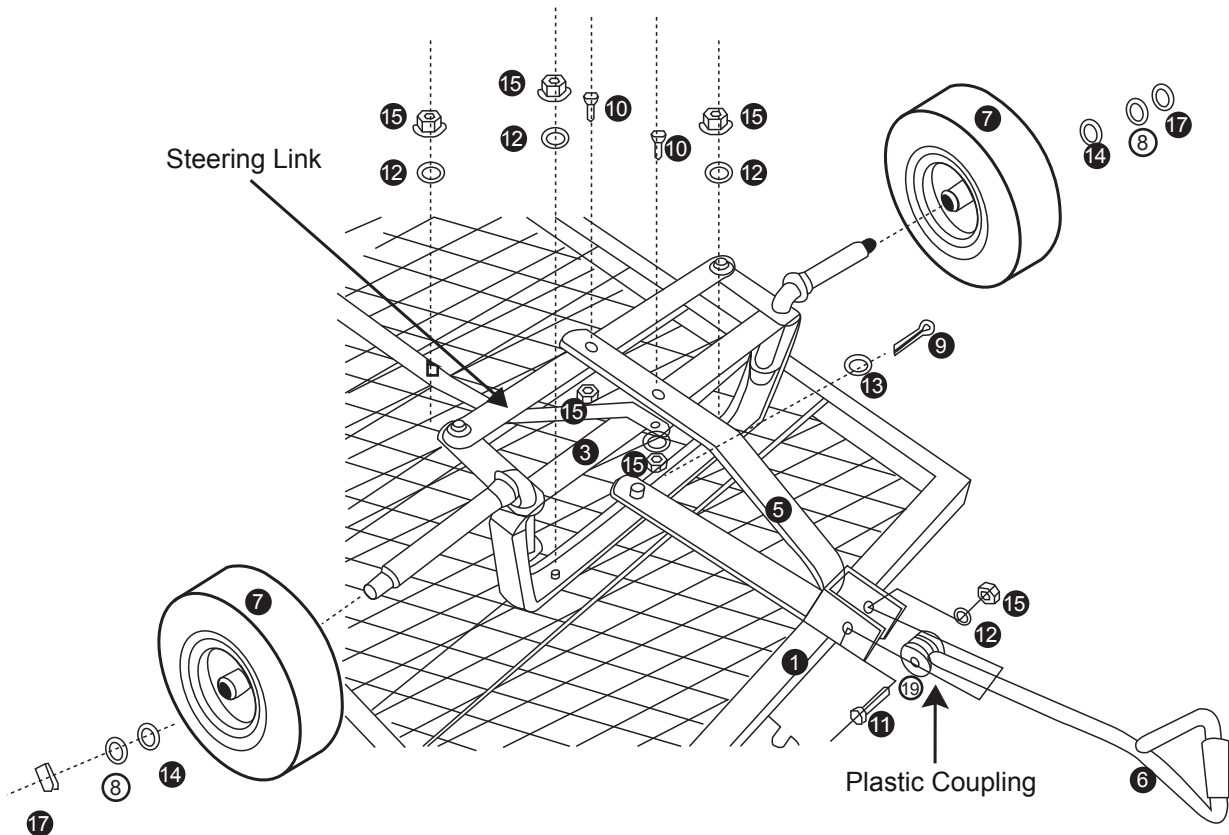
## CAUTION:

Take a moment to read through this manual before assembling and using this cart.

## SAFE USE INSTRUCTIONS

- 400 lbs maximum capacity with an evenly distributed load.
- DO NOT operate if any part is damaged or broken.
- DO NOT operate unless all four tyres are equally inflated between 20-30 psi.
  - Less tire pressure:
    - Gives your carried load a softer ride.
    - Makes pulling the cart across soft or un.
    - But decreases load carrying capacity.
  - More tire pressure:
    - Increases carrying capacity.
    - Max 400 lb load capacity requires 30 psi.
- To prevent tipping
  - Distribute load evenly across cartbed.
  - Do not use cart on steep inclines.
  - Do not make sharp turns quickly.
- Lower side fences when loading large items onto cart.
- NOT for use by children.

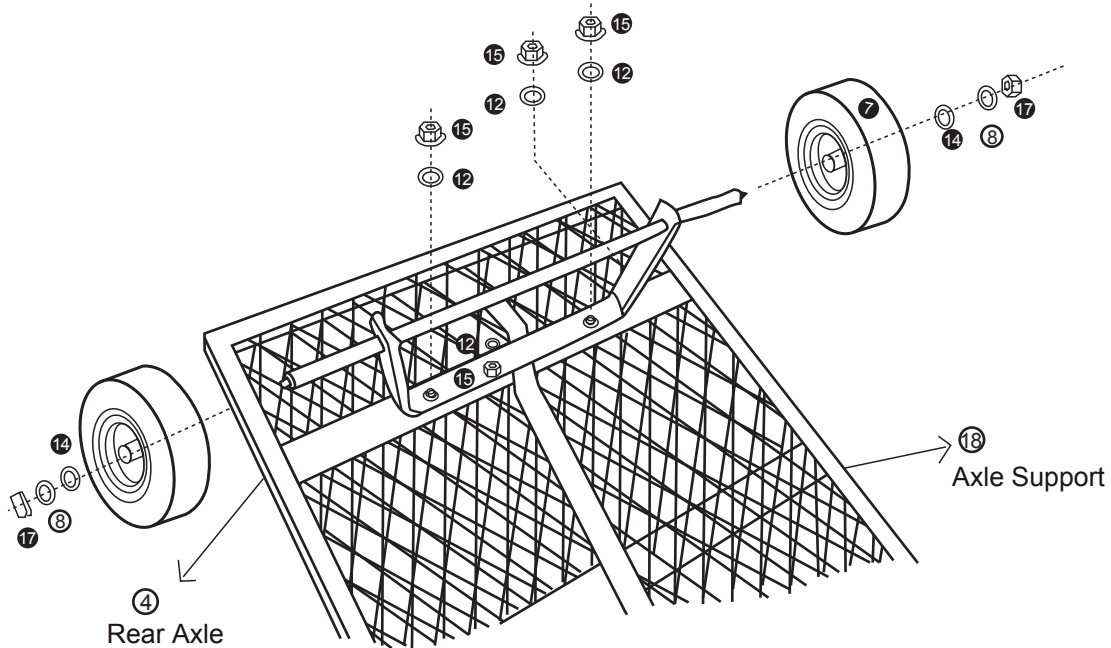
## ASSEMBLY INSTRUCTIONS



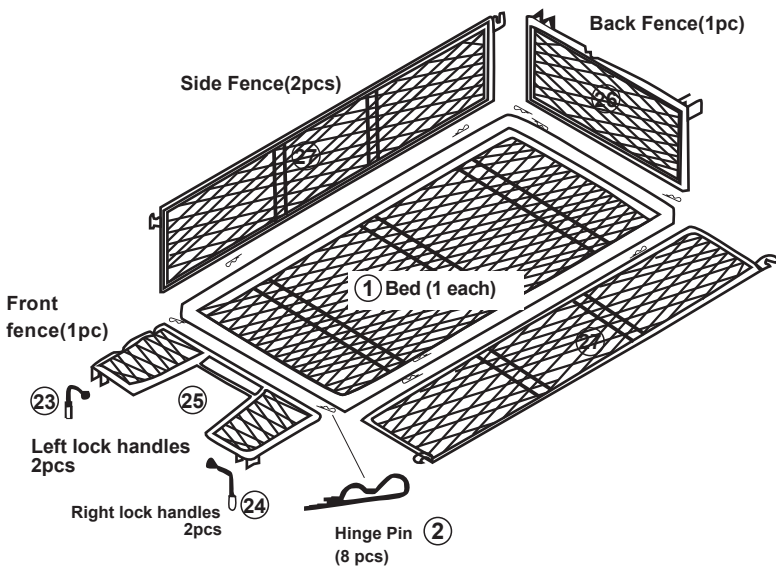
Unpack and lay out all the components Use the shipping carton as a work surface

- Position Cart Bed: Turn the cart bed(1) upside down on the shipping carton.
- Install Front Axle Attach the front axle to the front bed studs as shown using two washers(12) and two nuts (15). Fully tighten.
- Install Steering Link: Bolt the steering link between the ends of the front axle using two smallbolts(10), two small washers(12)under the nuts,and two nuts(15). Snug both bolts then loosen slightly to allow for steering.

- D. Install Axle Support With flat end of the support resting on top of the axle, install washer(12) and nut(15) securing the support to the mid bed stud.Fully tighten.
- E. Install the Steering Yoke:The straight leg of the yoke fits over the axle pin.The bent leg with two holes bolts to the axle and to the steering link.
  - a. First,secure the yoke at the pin with a medium washer(13) and cotter pin(9).Bend the legs of the cotter pin.
  - b. Second, pass a bolt (10) down thru the yoke axle support,and front axle. Install a washer (12) and nut (15).
  - c. Repeat at the second hole bolting the yoke to the steering link Snug both bolts then loosen slightly to allow for steering.

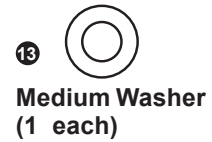
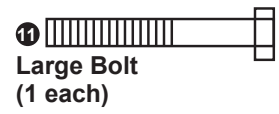
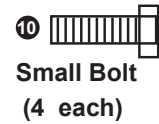
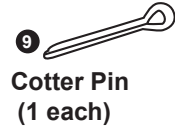
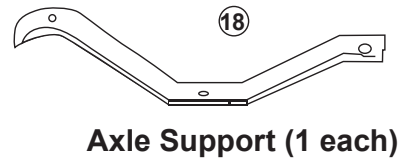
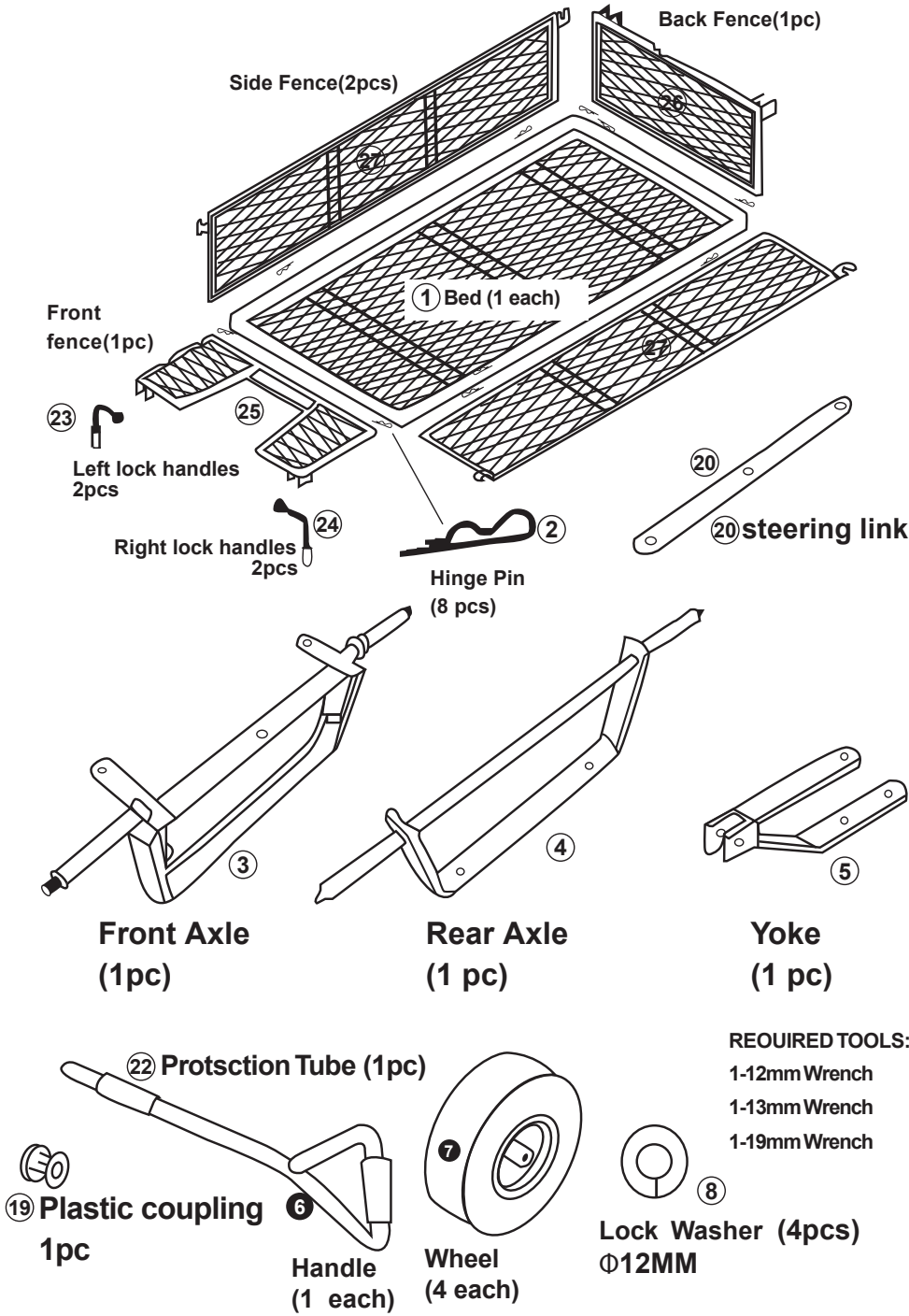


- F. Install Rear Axle Attach the rear bed studs using two washers (12) and two nuts (15), Fit the axle support over the axle stud and secure using washer (12) and nut (15). Fully tighten.
- G. Install Wheels:Slide the wheels (7) onto the axles with the valve stem side facing out. Secure each wheel using a lock washer (8) followed by a large washer (14) and secured by a cap nut (17). Fully tighten.
- H. Install handle:Install the handle (6) and plastic Coupling to the yoke (5) using long bolt (11),small washer (12) and nut (15), Don't over tighten.
- I. Install side fences:Turn the cart over onto its wheels, Install the sides , front and back fences using hinge pin(2)
- J. Install fence left and right lock handles



Assemble 4 fences(part #25, #26, #27) separately on bed (part #1) with Type B Pin(part #2),then connect all the fences with Left and Right Lock Handles(part #23&24).

# PARTS AND HARDWARE IDENTIFICATION



**REQUIRED TOOLS:**  
 1-12mm Wrench  
 1-13mm Wrench  
 1-19mm Wrench