

200W SOLAR PANEL BRIEFCASE

Lightweight off-grid energy source to power your gear with maximum efficiency. Take the FLEXSOLAR® 200W Solar Panel Briefcase with you on your outdoor travels. With high conversion efficiency up to 22%, it's ideally suited for mobile living, work and off-grid recreation. The briefcase design provides convenient portability, and includes a kick-stand that can be set up almost anywhere.



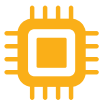
HIGHLY EFFICIENT

Premium solar cells with an energy conversion efficiency of up to 22%



ACCESS MULTIPLE PORTS

The voltage switchable DC port, Anderson port, and SAE port are ready to charge smartphones, tablets, laptops, power stations, coolers, and more. The negative-ground charge controller is compatible with RVs, boat trailers, etc.



OPTIMIZED CHARGING

An intelligent chip automatically identifies connected devices and adjusts output current to offer the fastest possible charging speed.



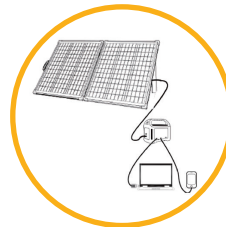
SUPERIOR DURABILITY

Industrial-strength glass and corrosion-resistant anodized aluminum (Black) kickstand to withstand high wind loads and snow loads.

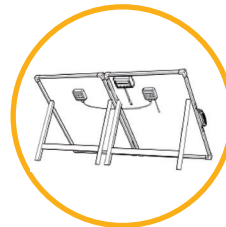


CHARGE MULTIPLE DEVICES

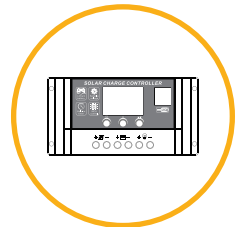
Go off-grid with confidence. Charge multiple portable devices at the same time.



Recharge Off-Grid



Kickstand



Controller



200W SOLAR PANEL BRIEFCASE

GENERAL

Model	G200
Part Number	FLC-G2-182000-P200-B
UPC Number	785249519192

ELECTRICAL SPECIFICATIONS

Rated Peak Power (Pmax W)	200 W
Open Circuit Voltage (Voc V)	22.8 V
Short Circuit Current (Isc A)	11.2 A
Maximum Power Voltage (Vmp V)	18.6 V
Maximum Power Current (Imp A)	10.8 A
Module Efficiency (%)	21.5%
Power Tolerance	±5%
Operating Temperature (°F/°C)	-40°F to 180°F (-40°C to 82°C)
Application Level	Class A
Temperature Coefficient (Pmax)	-0.38%/K
Temperature Coefficient (Voc)	-0.30%/K
Temperature Coefficient (Isc)	+0.05%/K
Standard Test Conditions	1000W/m2, 25°C, AM1.5




MECHANICAL SPECIFICATIONS



Solar Cell Type	Monocrystalline
Dimensions LxWxD	55.2 x 36.5 x 1.3 in (1402 x 928 x 33 mm) - unfolded 36.5 x 28.3 x 2.6 in (928 x 720 x 67 mm) - folded
Net Product Weight	38.6 lbs (17.5kg) with Junction Box
Backsheet Color	Black
Junction Box	IP65 rated in accordance with UL 3730 Output Ports: DC 8055, Anderson, SAE
Charge Controller	Provided

PACKAGING & SHIPPING INFORMATION

Retail Box (Dimensions & Weight)	Quantity 1 unit per retail box LxWxD: 38.0 x 3.5 x 28.7 in (965 x 90 x 730 mm); 39.5 lbs (17.9kg)
Master Box (Dimensions & Weight)	Quantity 1 retail box per master box LxWxD: 38.2 x 29.3 x 3.9 in (970 x 745 x 100 mm); 43.0 lbs (19.5kg)

ACCESSORIES

		
3' (1m) cable with SAE to Anderson connector	3' (1m) cable with SAE to DC 8055 male connector	10' (3m) cable with bare wire to alligator connector

	
20A/(12V/24V) PWM Controller	Carry bag

WARRANTY

2-Year Limited Warranty, register at flexsolarenergy.com

