

100W SOLAR PANEL BRIEFCASE

Lightweight off-grid energy source to power your gear with maximum efficiency. Take the FLEXSOLAR® 100W Solar Panel Briefcase with you on your outdoor travels. With high conversion efficiency up to 22%, it's ideally suited for mobile living, work and off-grid recreation. The briefcase design provides convenient portability, and includes a kick-stand that can be set up almost anywhere.



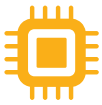
HIGHLY EFFICIENT

Premium solar cells with an energy conversion efficiency of up to 22%.



ACCESS MULTIPLE PORTS

The voltage switchable DC port, Anderson port, and SAE port are ready to charge smartphones, tablets, laptops, power stations, coolers, and more. The negative-ground charge controller is compatible with RVs, boat trailers, etc.



OPTIMIZED CHARGING

An intelligent chip automatically identifies connected devices and adjusts output current to offer the fastest possible charging speed.



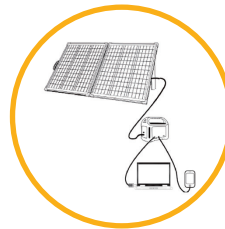
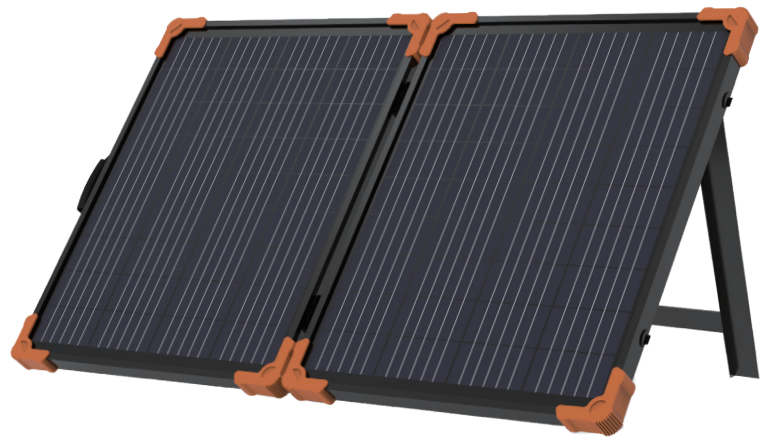
SUPERIOR DURABILITY

Industrial-strength glass and corrosion-resistant anodized aluminum (Black) kickstand to withstand high wind loads and snow loads.

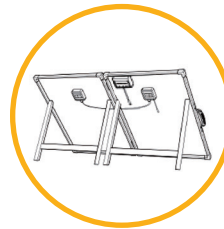


CHARGE MULTIPLE DEVICES

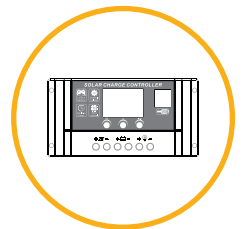
Go off-grid with confidence. Charge multiple portable devices at the same time.



Recharge Off-Grid



Kickstand



Controller



100W SOLAR PANEL BRIEFCASE

GENERAL

| | |
|-------------|----------------------|
| Model | G100 |
| Part Number | FLC-G2-181000-P100-B |
| UPC Number | 785249519185 |

ELECTRICAL SPECIFICATIONS

| | |
|---------------------------------|--------------------------------|
| Rated Peak Power (Pmax W) | 100 W |
| Open Circuit Voltage (Voc V) | 22.6 V |
| Short Circuit Current (Isc A) | 5.72 A |
| Maximum Power Voltage (Vmp V) | 18.4 V |
| Maximum Power Current (Imp A) | 5.43 A |
| Module Efficiency (%) | 21.5% |
| Power Tolerance | ±5% |
| Operating Temperature (°C /°F) | -40°F to 180°F (-40°C to 82°C) |
| Application Level | Class A |
| Temperature Coefficient (Pmax) | -0.38%/K |
| Temperature Coefficient (Voc) | -0.30%/K |
| Temperature Coefficient (Isc) | +0.05%/K |
| Standard Test Conditions | 1000W/m2, 25°C, AM1.5 |




MECHANICAL SPECIFICATIONS



| | |
|--------------------|---|
| Solar Cell Type | Monocrystalline |
| Dimensions LxWxD | 42.6 x 26.8 x 1.3 in (1082 x 683 x 33 mm) - unfolded 26.8 x 22.0 x 2.6 in (683 x 560 x 67 mm) - folded |
| Net Product Weight | 23.2 lbs (10.5kg) with Junction Box |
| Backsheet Color | Black |
| Junction Box | IP65 rated in accordance with UL 3730 Output Ports: DC, Anderson, SAE |
| Charge Controller | Provided |

PACKAGING & SHIPPING INFORMATION

| | |
|----------------------------------|--|
| Retail Box (Dimensions & Weight) | Quantity 1 unit per retail box LxWxD: 28.3 x 3.5 x 22.4 in (720 x 90 x 570 mm); 25.1 lbs (11.4kg) |
| Master Box (Dimensions & Weight) | Quantity 1 retail box per master box LxWxD: 28.7 x 23 x 3.9 in (730 x 585x 100 mm); 27.3 lbs (12.4kg) |

ACCESSORIES

| | | |
|---|---|---|
|  |  |  |
| 3' (1m) cable with SAE to Anderson connector | 3' (1m) cable with SAE to DC 8055 male connector | 10' (3m) cable with bare wire to alligator connector |

| | |
|---|---|
|  |  |
| 20A/(12V/24V) PWM Controller | Carry bag |

WARRANTY

2-Year Limited Warranty, register at flexsolarenergy.com

