



Technical Support and E-Warranty Certificate [www.vevor.com/support](http://www.vevor.com/support)

## AIR SCRUBBER MANUAL

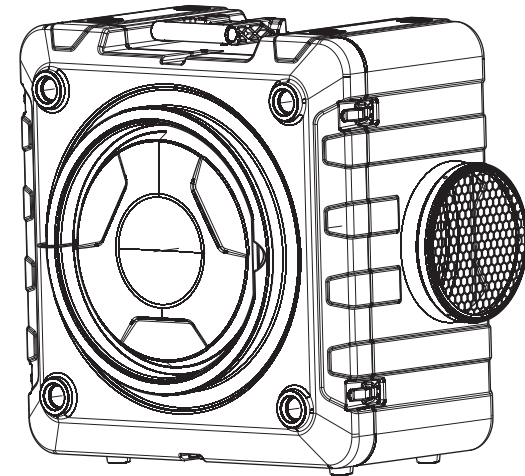
**MODEL: ZHP2301-550/ZHP2301-800**



Technical Support and E-Warranty Certificate  
[www.vevor.com/support](http://www.vevor.com/support)

We continue to be committed to provide you tools with competitive price. "Save Half", "Half Price" or any other similar expressions used by us only represents an estimate of savings you might benefit from buying certain tools with us compared to the major top brands and does not necessarily mean to cover all categories of tools offered by us. You are kindly reminded to verify carefully when you are placing an order with us if you are actually saving half in comparison with the top major brands.

ZHP2301-550/ZHP2301-800



**NEED HELP? CONTACT US!**

Have product questions? Need technical support? Please feel free to contact us:

✉ [CustomerService@vevor.com](mailto:CustomerService@vevor.com)

This is the original instruction, please read all manual instructions carefully before operating. VEVOR reserves a clear interpretation of our user manual. The appearance of the product shall be subject to the product you received. Please forgive us that we won't inform you again if there are any technology or software updates on our product.

Read the instructions carefully before using the device.

## Catalogue

1. Technical Parameters
2. Safety Precautions
3. Product Structure Diagram
4. Instructions Of Use
5. Scope Of Application
6. Common Fault Analysis

## Technical Parameters

Brand	Vevor	
Model	ZHP2301-550	ZHP2301-800
Power(W)	220W	300W
Air Volume(CFM)	550	800
Product size (mm)	616*406*598	616*406*598
Product weight (kg)	15.7	16



### Safety & Warning

1. Please note that the air scrubber should only be used with parts approved by supplier. Using unauthorized parts or alterations to the machine could void your

warranty. Contact an authorized distributor for further assistance.

2. If the supply cord is damaged, it must be replaced by the manufacturer, its service agent or similarly qualified persons in order to avoid a hazard.
3. This appliance is not intended for use by persons (including children) with reduced physical, sensory or mental capabilities or lack of experience and knowledge, unless they have been given supervision or instruction by a person responsible for their safety.
4. Children should be supervised to ensure they do not play with the appliance.
5. Please remove all filter packing bags before the machine plug-in power supplier. Otherwise, there will be risks or damage to the machine, like no filter, the machine will not work, etc.
6. The power supplier must be cut off before replacing any filters. In addition, all filters must use authorized or approved components. Otherwise, it will affect the filter efficiency or cause damage to the machine.
7. **WARNING:** This appliance contains a UV emitter. Do not stare at the light source
8. **CAUTION:** To reduce the risk of electric shock, connect only to an outlet with a ground fault circuit interrupting device.
9. Note: To reduce the risk of electric shock, please connect only to the socket with the ground fault circuit break device.
10. Ensure that the intake and outlet are free of all materials and obstacles, as any restrictions may cause the equipment to overheat and cause impact or fire hazards.
11. Do not change or modify the machine in any way.

### To Avoid the Risk of Fire or Electric Shock:

- The unit must be electrically grounded.
- Insert 3-prong plug directly into outlet with Ground Fault Circuit Interrupting device.
- Do not use an adapter with this unit.
- Do not use the unit in standing water.
- If electrical parts get wet, they must be dried before use.

Breathing Hazard

When using the air scrubber in a containment area, always turn off power to open combustion appliances, such as fireplaces, furnaces, water heaters, and HVAC systems, to avoid the risk of back drafting carbon monoxide fumes.

If the Filter Change Light illuminates during the remediation process, immediately change the HEPA/Activated Carbon Filter.

### Tipping Hazard

- Use caution when stacking units.
- Do not stack more than 2 units on top of each other.
- Falling equipment could cause bodily harm.

**WARNING:** Do not expose to water or rain to reduce the risk of electric shock.

**WARNING:** NOT SUITABLE FOR USE WITH SOLID-STATE SPEED CONTROLS

**CAUTION:** To reduce the risk of electric shock, connect only to an outlet with a ground fault circuit interrupting device.

**WARNING:** Skin or eye damage may result from directly viewing the light produced by the lamp in this apparatus. Always disconnect power before relamping or servicing. Replace Lamp With Lamp ZW4S15W-Z135, DC20V, 160mA 100-280nm.

### SAFETY NOTES

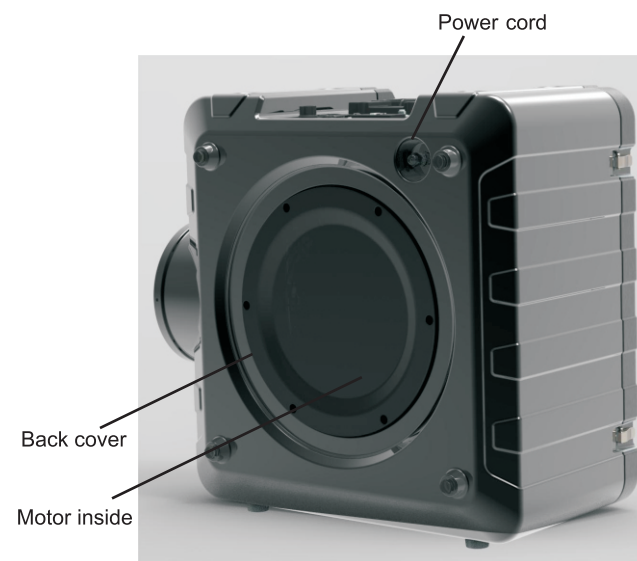
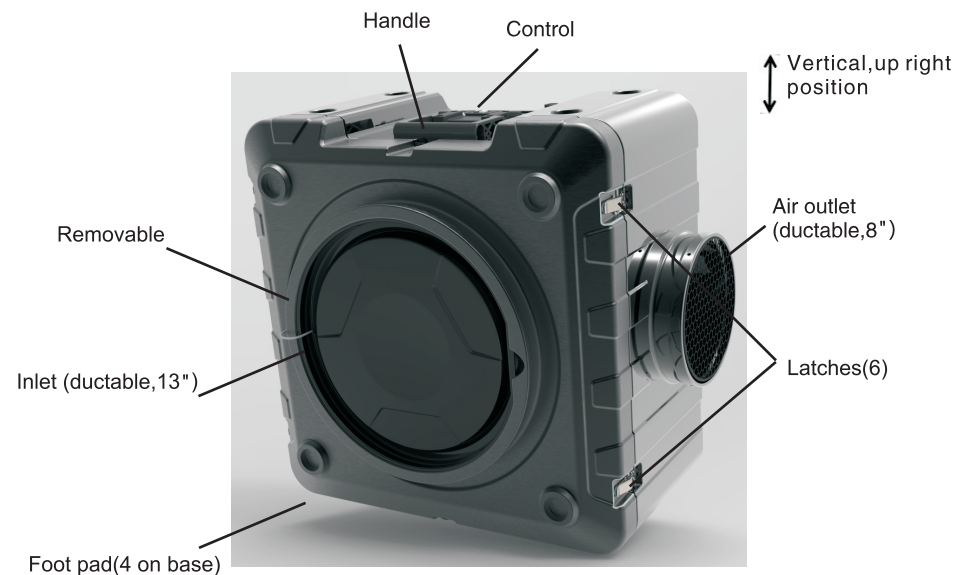
- Always unplug the unit before performing any maintenance.
- Check the power cord for damage (fraying, cuts, etc.) before use.
- To avoid electric shock, never use a water hose or pressure washer to clean the electrical components.
- Check the pre-filter before operating the machine to ensure it is not clogged. If there is any sign of airflow restriction change the filter.
- Make sure the unit is dry before installing clean filters.

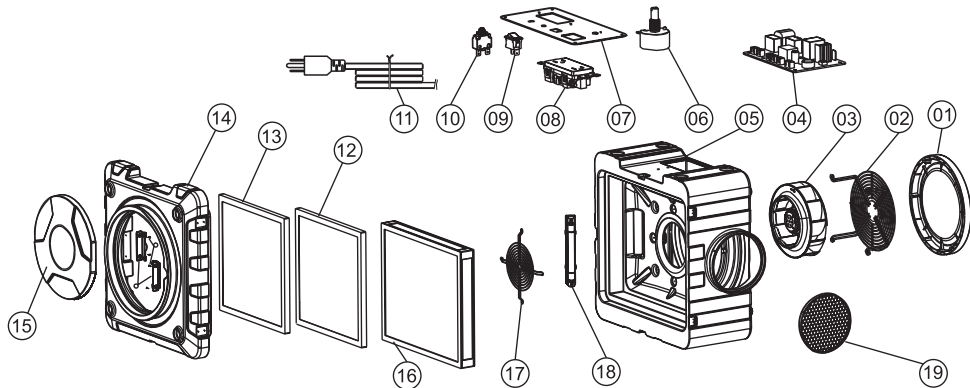
When using the air scrubber for remediation purposes, replace both filters simultaneously and always clean the machine between jobs. This will help prevent cross-contamination.

**GFCI:** Press the TEST button (then RESET button) every month to ensure proper operation.

**SAVE THESE INSTRUCTIONS**

## Product Structure Diagram





No.	Name	Qty	No.	Name	Qty
01	The fan cover	1	11	Power line	1
02	Fan holder	1	12	Carbon filter	1
03	Draught fan	1	13	Air pre cleaner	1
04	Power strip	1	14	Suction canal	1
05	Noumenon	1	15	Air inlet cover	1
06	Potentiometer	1	16	Hepa filter	1
07	Control panel assembly	1	17	Fan retainer	1
08	Socket	1	18	UVC lamp	1
09	Switch	1	19	The wind hood	1
10	Overcurrent protector	1			

## Instructions Of Use

### SET UP

1. Place the air scrubber so that it is in an upright, vertical position.
2. Plug the machine into a standard 120-volt outlet. Note: Each unit needs 3 amps to operate.
3. Power the unit on and adjust the speed by turning the variable speed control.
4. The air scrubber can be operated vertically or horizontally, depending on the situation. At this point, adjust the machine to the optimal position.
5. When the machine's total working time adds up to 2000 hours, the filter change warning light will blink with buzzing on the control panel to remind changing filters. (To reset the machine, push the UV-C

light. Switch 3 times continuously in 5 seconds after resetting the filter service time. )

6. UV-C sterilization lamp fault detection function: when the UV-C sterilization lamp does not work, the buzzer will keep ringing.

## THE CONTROL PANEL

### Variable Speed Control

Variable speed control is used to adjust the power of the machine. Turn the knob in a clockwise direction, to increase the speed from minimum speed to maximum, the minimum speed setting is located immediately close to OFF.

### Auxiliary Outlet

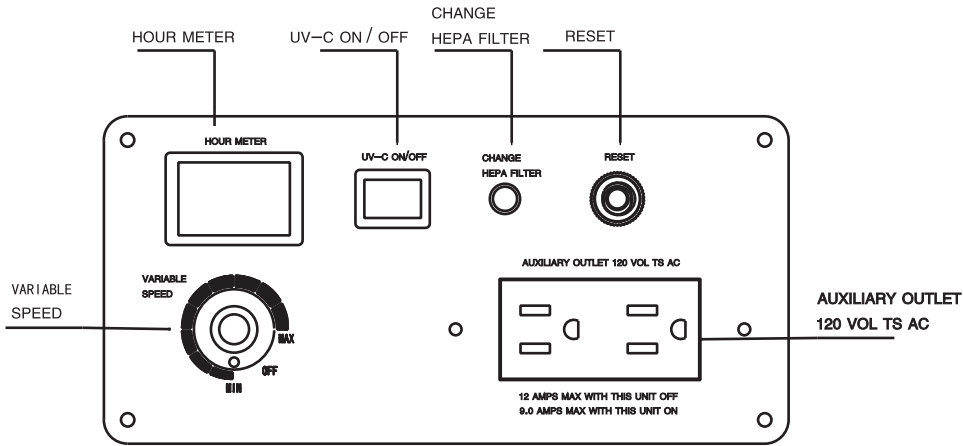
If more air filtration is necessary for a space, you can "daisy chain" or link up to 3 air scrubbers to the same outlet. There is a maximum amperage of 12 when the units are turned off, a maximum of 9 amps when the units are turned on. Other equipment can be plugged into the same outlet as the air scrubber as long as it doesn't go above the max amperage.

### Circuit Breaker Switch

The Circuit Breaker Switch protects the unit if more than 12 amps of electricity are passing the circuit. If this occurs, the switch will cut off the power to the unit.

### Timer

Used to time the running time of the device. Start timing when the device is running, and pause timing when the device is stopped.



### CHANGING THE FILTERS

1. Loosen the 2 locks that hold the filter board in place.
2. Slide out the filter panel board.
3. Remove the used filters and replace them with new filters.

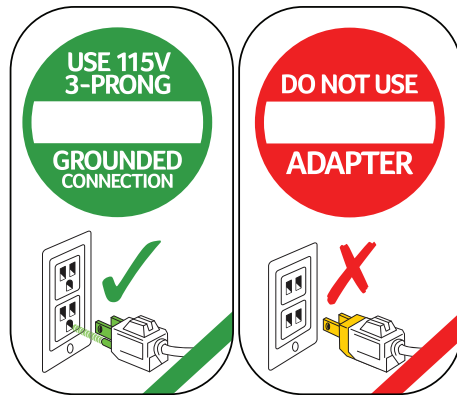
### WARNING

- Always wear approved protective gear when changing the filters.
- Filters should be changed after each remediation job.
- If the indicator light is on, Buzzer rang, always change the HE PA/Activated Carbon Filter.

• For the safe operation of this machine follow the instructions given in this booklet and the training provided. Failure to do so can result in personal injury and/or damage to machine and property!

• **DO NOT OPERATE MACHINE IN AN EXPLOSIVE ENVIRONMENT!**

NOTE: In Canada, the use of a temporary adapter is not permitted by the Canadian Electrical Code.



## Scope Of Application

### Water Damage

In this application, the air scrubber should be placed in the center of the affected area. The air scrubber will draw in the air, filter it, then blow out the newly cleaned air. To begin the process, turn on the scrubber, and it will start cleaning the air. Keep in mind that if you work in a large area or one divided by walls, you may need several air scrubbers to clean the air effectively.

### Odor Control

When used with the HEPA/Activated Carbon Filter, the air scrubber is also excellent at odor control. Place the carbon filter in the pre-filter slot, and it will capture a wide variety of odor-causing gas molecules, such as volatile organic compounds (VOCs), smoke, soot, and paint fumes.

### Other Uses

The air scrubber is also valuable for many other applications, including mold remediation, fire damage, dust control, and sewage remediation.

## Common Fault Analysis

Fault Phenomenon	Solution
The machine does not turn on	<ul style="list-style-type: none"> <li>Switch not turned on-turn</li> <li>Circuit breaker or GFCI has tripped-push rest button</li> <li>No power to scrubber-make sure unit is plugged in;check power supply</li> <li>Faulty switch-replace</li> </ul>