

Package Contents

- 1080p MPX Wireless Security Camera
- Wireless Receiver
- Antennas (x2)*
- Power Adapters (x2)*
- Mounting Kits (x2)*
- Allen Key
- BNC Adapter

* One each for camera and receiver.

ATTENTION:

A REGULATED UL / CSA APPROVED power supply is REQUIRED for use with this camera (included). Use of a non-regulated, non-conforming power supply can damage this product and voids the warranty.

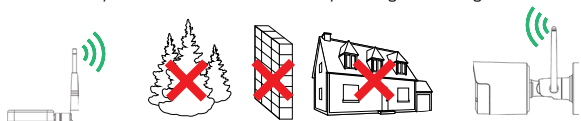
Safety Precautions

- Read this guide carefully and keep it for future reference.
- Follow all instructions for safe use of the product and handle with care.
- Use the camera within given temperature, humidity and voltage levels noted in the camera's specifications.
- Do not disassemble the camera.
- Do not point the camera directly towards the sun or a source of intense light.
- Use only the supplied regulated power supply provided with the product. Use of a non-regulated, non-conforming power supply can damage the product and void the warranty.
- Periodic cleaning may be required. Use a damp cloth only. Do not use any harsh, chemical-based cleaners.

Installation Tips

To ensure the best possible wireless performance, it is recommended to keep the following installation tips in mind when choosing a location for the camera:

- Ensure your camera is placed as close to your receiver as possible.
- Reduce the number of obstructive materials between the camera and the receiver. Concrete, brick, metal and wood are the most common materials in your house that can cause poor signal strength.



- The camera uses the 2.4GHz band exclusively. Most new routers support both 2.4GHz and 5GHz bands. It is recommended to use other WiFi-connected devices using the 5GHz band when possible to ensure the 2.4GHz band is not overcrowded.
- Other electronic devices such as microwaves, TVs, cordless phones, and baby monitors can cause signal interference. It is recommended to install the camera as far away from these devices as possible.



- Point the camera where there is the least amount of obstructions (i.e., tree branches).
- Install the camera where vandals cannot easily reach.
- This camera is rated for outdoor use. Installation in a sheltered location is recommended.

Resources

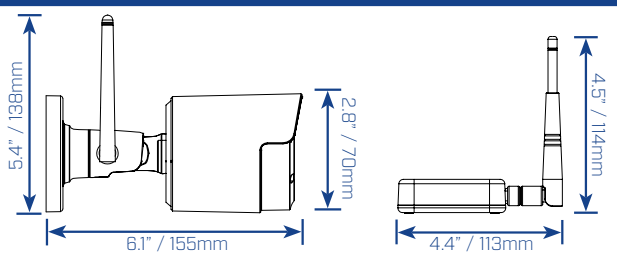


Need Help?

Visit us online for up-to-date software and complete instruction manuals

- 1 Visit lorex.com
- 2 Search for the model number of your product
- 3 Click on your product in the search results
- 4 Click on the **Downloads** tab

Dimensions



Disclaimers

- For a full list of compatible recorders, visit lorex.com/compatibility
- Not intended for submersion in water.
- This camera includes an Auto Mechanical IR Cut Filter. When the camera changes between Day/Night viewing modes, an audible clicking noise may be heard from the camera. This clicking is normal, and indicates that the camera filter is working.

Copyright © 2018 Lorex Corporation

As our products are subject to continuous improvement, Lorex reserves the right to modify product design, specifications and prices, without notice and without incurring any obligation. E60E. All rights reserved.

LOREX[®]

1080p MPX Wireless Security Camera

Quick Start Guide
English Version 1.0



LW4211 SERIES

www.lorex.com

LW4211_QSG_EN_R1

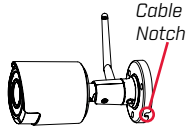
Installing the Camera

IMPORTANT:

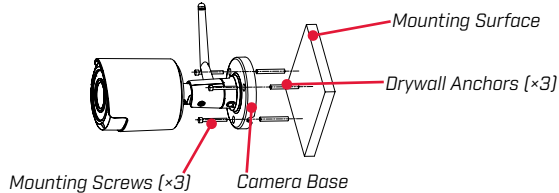
- Test your camera prior to selecting a permanent mounting location by temporarily connecting the camera and cable to your DVR.
- Ensure the camera is no more than 700ft (213m) away from the wireless receiver in an open field (with line of sight between antennas). The range is approximately 115ft (35m) or less in an indoor environment, depending if there are walls or obstructions between the camera and receiver.
- Review the 'Installation Tips' section before choosing a mounting location for the camera.

Before Installing the Camera

- Decide whether to run the cables through the wall / ceiling (drilling required) or along the wall / ceiling.
- If you run the cables along the wall / ceiling, you must run the cable through the **Cable notch** on the base. This will keep the camera base flush to the surface when mounted.



To install your camera:

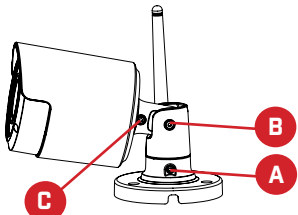


1. Use the included mounting template or camera base to mark holes for the included mounting screws. Drill holes where marked.
NOTE: Ensure one of the included antennas is properly attached to the camera.
2. Mount the camera to the mounting surface using the included mounting screws (x3).
NOTE: Use the included drywall anchors (x3) if installing into drywall.
3. Adjust the angle of the camera until the desired view is set. Tighten the screws to secure the camera position.

A. Use the included Allen key to loosen the adjustment screw on the camera base. Rotate the arm of the camera up to 360°, then tighten the screw.

B. Use the included Allen key to loosen the adjustment screw. Bend the arm of the camera up to 90°, then tighten the screw.

C. Use the included Allen key to loosen the adjustment screw furthest from the camera base. Rotate the camera until it is level with the viewing area, then tighten the screw.



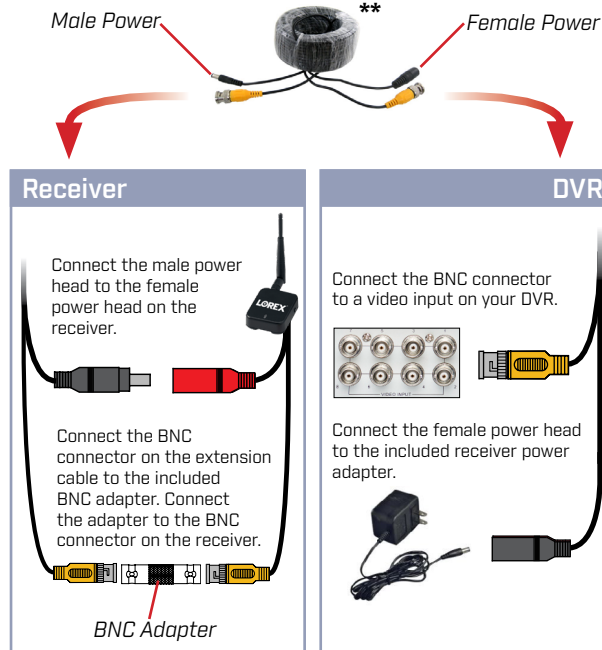
4. Connect the camera power adapter to the camera cable. Connect the power adapter to a power outlet.
5. Remove protective film from the camera lens.

Setting Up the Receiver

Connecting the receiver directly to DVR:

1. Ensure one of the included antennas is properly attached to the receiver.
2. Connect the receiver's BNC cable to a compatible DVR's video input*.
3. Connect the receiver power adapter to the receiver. Connect the power adapter to a power outlet.
NOTE: Make sure to first connect and power on the camera before powering on the receiver.
4. (Optional) Use the included double-sided tape to securely attach the receiver to a flat surface.
(OR)
Secure the receiver to a flat surface using the included mounting screws.

Connecting the receiver to DVR using a BNC extension cable:



* This camera is only compatible with select DVRs. For a full list of compatible recorders, visit lorex.com/compatibility.

** Not included. Compatible BNC extension cable available at lorex.com.

Pairing the Camera

The camera and receiver have already been paired out of the box. If for some reason the pairing is lost, follow these steps to pair the camera and receiver.

To pair the camera and receiver:

1. Make sure that the camera and receiver are both powered up and all antennas properly attached.
2. Press the pair button on the receiver (see **Figure 1**).
3. Press and hold the pair button on the back of the camera within 30 seconds of pressing the pair button on the receiver (see **Figure 2**). If successful, live video from the camera will appear on the monitor.

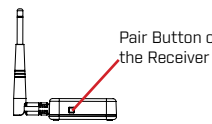


Figure 1

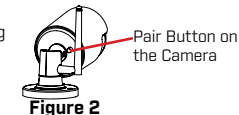


Figure 2

Installing Multiple Wireless Cameras



When installing multiple digital wireless security cameras in the same environment, maintain at least 4" / 10cm between the receivers to optimize camera performance.

NOTE: It is not recommended to install more than 3 digital wireless security cameras in the same environment to maintain optimal video frame rate performance.

Audio Settings

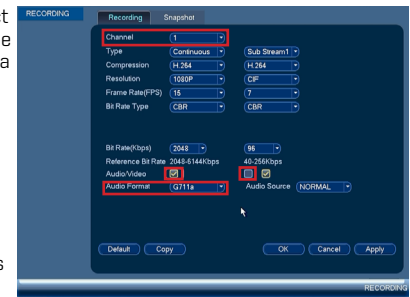
ATTENTION:

Audio recording without consent is illegal in certain jurisdictions. Lorex Corporation assumes no liability for use of its products that does not conform with local laws.

Audio is disabled by default. You can enable audio through a compatible Lorex DVR. For a full list of compatible recorders, visit lorex.com/compatibility

To enable camera audio on LHV / DV Series DVRs:

1. In Live View, right-click and click **Main Menu**. Enter the system user name and password.
2. Click (Settings icon) and select **Recording > Recording**.
3. Under **Channel**, select the channel where the audio-capable camera is connected.
4. Under **Audio/Video**, check the box on the left to enable audio recording.
5. Under **Audio Format**, select the format that will be used to record audio. **G711a** is recommended.
6. Click **OK** to save changes.
7. (Optional) Under **Audio/Video**, check the middle box to enable audio when viewing cameras through the computer or mobile applications.



NOTE: These instructions are based on current DVR interface. For the most up-to-date instructions, see your DVR's instruction manual on lorex.com.