






#### Find us on Social Media

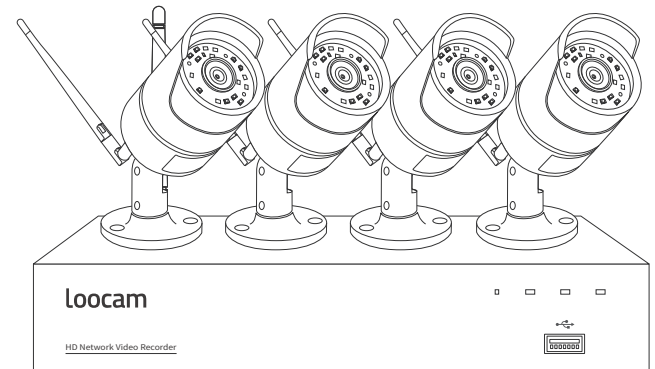
-  @Loocam
-  @LoocamTech
-  @LoocamTech

Copyright 2021 © Loocam Technology LLC, California. All rights reserved.  
Apple and App Store are trademarks of Apple Inc., registered in the U.S. and other countries.  
Google and Google Play are trademarks of Google Inc.



# Quick Start Guide

Wireless Security Camera System



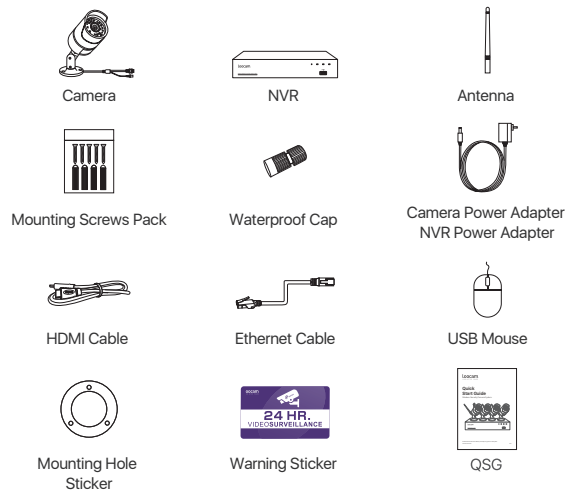
ATTENTION: Please read carefully and keep this guide in a safe place.  
[www.loocam.com](http://www.loocam.com)

V1.0

# Contents

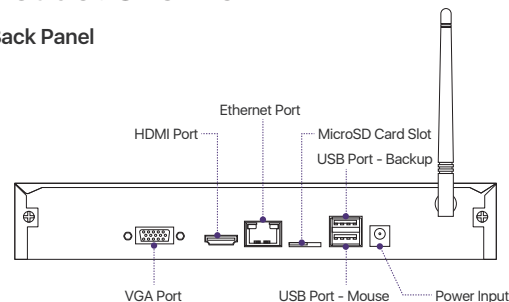
|  |    |
|--|----|
| 1. What's in the box                     | 01 |
| 2. Product Overview                      | 01 |
| 3. Installation and Setup                | 03 |
| Hard Drive Installation                  |    |
| Security System Connection               |    |
| Camera Installation                      |    |
| 4. Operating NVR System                  | 06 |
| NVR System Setup                         |    |
| Video Recording                          |    |
| Motion Detection                         |    |
| Human Figure Detection                   |    |
| Backup via USB flash drive               |    |
| System Upgrade via USB flash drive       |    |
| 5. Setup for Remote Viewing (Smartphone) | 09 |
| APP Download                             |    |
| Add Device                               |    |
| 6. Setup for Remote Viewing (PC)         | 11 |
| Client Installation                      |    |
| Add/Manage Device                        |    |
| Live view and Control                    |    |
| 7. Camera Installation                   | 12 |
| Installation Tips                        |    |
| 8. Warranty and Support                  | 13 |

## 1. What's in the box

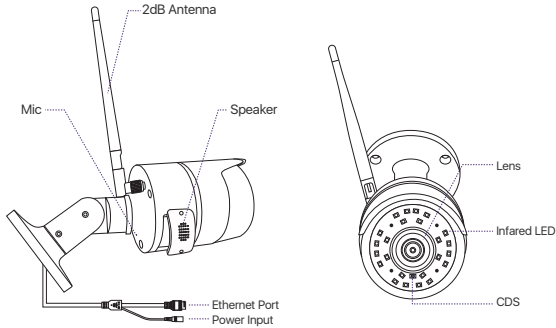


## 2. Product Overview

### NVR Back Panel




## IP Camera



## Safety Precautions

- Use the camera only with compatible LOOCAM NVRs.
- Read this guide carefully and keep it for future reference.
- Follow all instructions for safe use of the product and handle with care.
- Use the camera within given temperature, humidity and voltage levels noted in the camera's specifications.
- Do not disassemble the camera.
- Do not point the camera directly towards the sun or a source of intense light.
- Use only a regulated power supply with the product (optional). Use of a non-regulated, non-conforming power supply can damage the product and void the warranty.
- Periodic cleaning may be required. Use a damp cloth only. Do not use any harsh, chemical-based cleaners.
- The supplied cable is rated for surface mounting only. Cables for in-wall and floor-to-floor installations are sold separately. The add-on cameras, solar-panel and other accessories are available at [www.loocam.com](http://www.loocam.com).

 Do not open the case while power is on.

## 3. Installation and Setup

### Hard Drive Installation


The NVR may not include HDD (Hard Disk Drive) depending on the kit you selected. This NVR works with most 3.5" SATA HDD (supports up to 8TB).

**Note:** Please skip this step if HDD is pre-installed in your NVR.



- (1) Unplug your NVR from power, unscrew and remove the top cover.
- (2) Connect the SATA power and data cables from the NVR to the corresponding ports on your HDD (as shown).
- (3) Place the Hard Disk into the DVR. Arrange the wires neatly.
- (4) Hold the HDD and the NVR steadily, gently turn it over and line up the holes on the HDD with the holes on bottom of the NVR. Using a suitable screwdriver, screw the provided screws into the holes. Assemble back the cover.
- (5) After installing a Hard Disk, you need to first format the Hard Disk before recording. Right click the mouse > go to Main Menu > Disk Management > Select the Hard Disk > Click Format > Apply.

**Note:** For MicroSD card, simply insert the card into the allocated slot at the back of the NVR. Surveillance-certificated hard drive is recommended. Compared to HDD (supports full day recording), MicroSD card is an economical alternatives for light recording.

 NVR can only support one type of storage at one time.

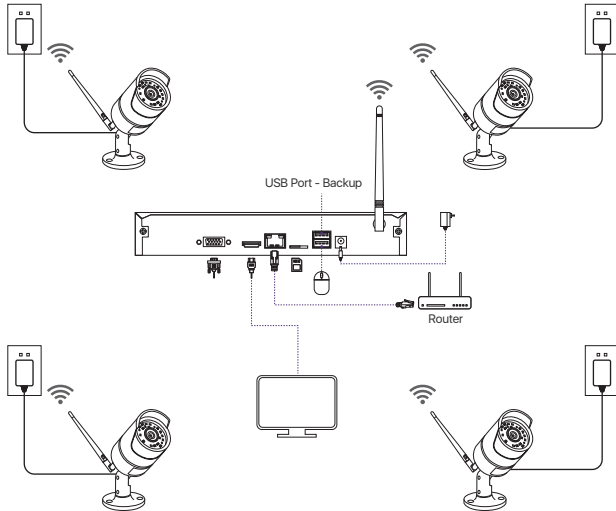
## Security System Connection

To ensure that the product works properly and not damaged while in transit, we recommend you to test the whole system before installation.

- (1) Install the antenna on the back panel of the NVR as shown in the diagram <NVR Back Panel> on page 1.
- (2) Next install the other antennas on the back of each cameras. Make sure the antennas are tighten.

**Note:** Antennas for NVR and Cameras are the same.

- (3) Connect the monitor to the NVR using HDMI or VGA.
- (4) Use a network cable to connect the NVR to the router.
- (5) Insert the USB mouse into the USB port on the rear panel of the NVR
- (6) Connect the cameras to the power adapter (DC 12V/1A).
- (7) Connect the power adapter (DC 12V/2A) to the NVR power input.
- (8) Plug power adapters into the wall socket.



## Pairing Add-on Camera

The cameras have been paired before shipping. Simply plug and play. It is recommended to test the system with the cameras before installation. If it does not work, please contact Loocam customer service.

In the event of adding new add-on cameras or pairing the cameras after resetting, please follow the steps below:

- (1) Right-click the mouse connected to the NVR, and the operation menu will pop up.
- (2) Click on the <IPC channel config> to enter the IPC channel configuration interface.



| Index | IP Address     | Firmware Version   | Type  | MAC               | Add status |
|-------|----------------|--------------------|-------|-------------------|------------|
| 1     | 192.168.147.13 | V3.8.2.16E201200FA | WIFI  | F4:DE:05:6A:38:20 | Not added  |
| 2     | 192.168.147.7  | V3.8.2.16E201200FA | WIFI  | F4:DE:05:8D:AD:20 | Not added  |
| 3     | 192.168.147.2  | V3.8.2.16E201200FA | WIFI  | 00:53:34:78:92:14 | Not added  |
| 4     | 192.168.147.5  | V3.8.2.16E201200FA | Cable | 92:2A:52:9A:3F:20 | Not added  |
| 5     | 192.168.147.3  | V3.8.2.16E201200FA | Cable | F6:6C:08:DA:4D:66 | Not added  |

| Channel | IP Address | Firmware Version | Type | MAC | Connection Status |
|---------|------------|------------------|------|-----|-------------------|
|         |            |                  |      |     |                   |
|         |            |                  |      |     |                   |
|         |            |                  |      |     |                   |
|         |            |                  |      |     |                   |
|         |            |                  |      |     |                   |
|         |            |                  |      |     |                   |
|         |            |                  |      |     |                   |
|         |            |                  |      |     |                   |
|         |            |                  |      |     |                   |
|         |            |                  |      |     |                   |

- (3) Click on the search button on the IPC channel configuration page to search for the corresponding IPC;
- (4) Next, select the IPC you wanted to add from the search result and click wireless add. Upon successful connection, the connected IPC will appear at the bottom of the page. Now you can see live feed from the newly added channel of the camera.

## 4. Operating NVR system

### NVR System Setup

After connecting the system, power on the NVR and a Wizard page setting will appear. On the Wizard page setting, you can edit device name, select Language, Date Format, Time Format, Time Zone, System Date and System Time.



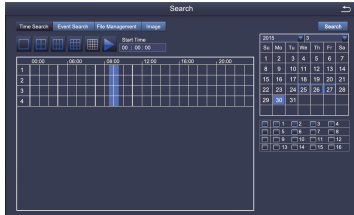
### Password Setting:

From the NVR live viewing screen, right-click and tap Main Menu > Setup > Users. Select the account you want to set password and click <Change Password>. Default password (Empty). When setting the password, please enter at least 6 characters or more. Note: You can write down the password in case you forget.

**Password:** \_\_\_\_\_

### Video Recording

From the NVR live viewing screen, right-click and tap Main Menu > Search, system will display as shown:



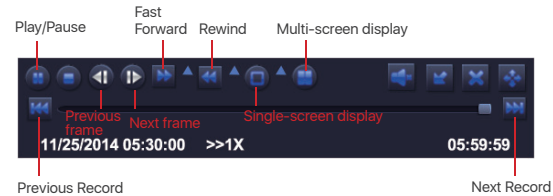
Search the video you want via Time or Event, then click on play button.



Select the channel



Start playing



### Previous Record:

Move to last recorded event

### Next Record:

Move to next recorded event

### Fast Forward:

Video can be played at different speed, from 1/4x to 16x speed.

### Rewind:

Video play can be rewind at 1x, 8x, 16x and 32x speed.

### Screen Display Mode:


Both single-screen and multi-screen are available. You can choose how many channels you want to playback one time. Channel without records displays blank screen.

## Motion Detection

After setting motion detection, the NVR will only record when it detects movement or activity. Right-click > Main Menu> Setup > Alarm > Motion.

Select the camera you want to setup motion detection by ticking the box under 'Enable'



**Note:** An icon  will be shown when motion is detected by the camera and the system will start recording.

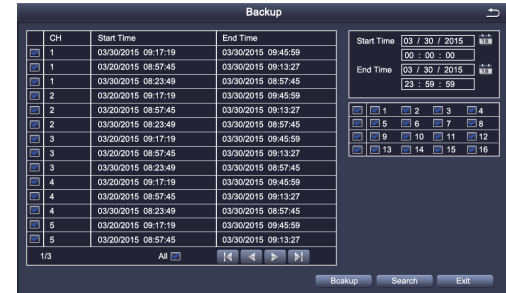
## Human Figure Detection

This NVR supports human figure detection. When human figure is detected, it will trigger alarm/recording. Combining motion detection and human figure detection, the false alarm rate will decrease.



## Backup via USB flash drive

Insert the USB flash drive. Right click > Main Menu> Backup > select channel and time > Search >select the video clips > Backup > select storage media > Start.



## System Upgrade via USB flash drive

You can contact our official customer service or download the latest program directly from the official website. Copy the firmware file to the root of USB flash drive. Then proceed as follows:

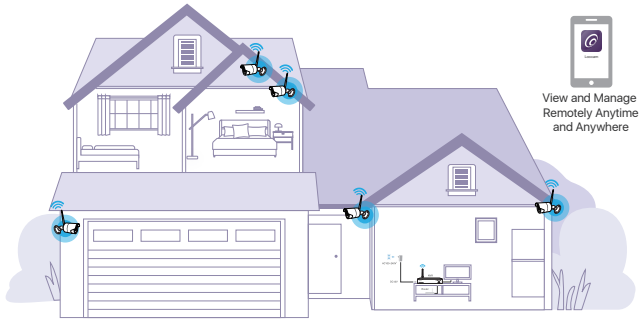
First plug in the USB flash drive, and then unplug the NVR power supply. Plug in the power plug, you will see an "upgrading" upgrade interface on the monitor. Please wait for a while. After the upgrade is completed, unplug the USB flash drive and the upgrade has completed.

**Note:** After the upgrade is completed, please do not restart the power supply when the U disk is still plug in, otherwise the system will perform the upgrade again.

## 5. Setup for Remote Viewing (Smartphone)

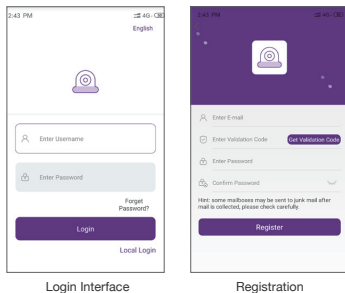
## APP Download

Scan the QR Code or search Loocam in AppStore or Google Play to download the free app.



This camera system can work without internet connectivity. For the best user experience, remote-control via internet is recommended.

After downloading, register and create account.



**Note:** You can write down your account information below, in case you forgot. (Registered email or phone number, user account name, password or a security question) \_\_\_\_\_

## Add Device

- (1) Go to Loocam App in your phone, tap the icon [+] in the top right corner to add device.
- (2) Select your device type of NVR.
- (3) Scan the UID QR code on the NVR cover. This UID QR code also can be found on the NVR startup screen or in the NVR main menu (Information-System-Device ID).
- (4) Follow the instructions to add your device and watch the live streaming video.

**Note:** Two-way voice via Loocam App for cameras with built-in mic and speaker.

## 6. Setup for Remote Viewing (PC)

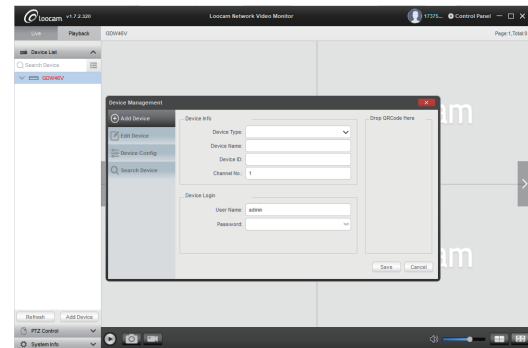
### Client Installation

Download Mac or Windows client (AVSS) from Loocam official website [www.loocam.com](http://www.loocam.com).

**Note:** If you have registered an account through Loocam APP, simply login using the same account for AVSS.

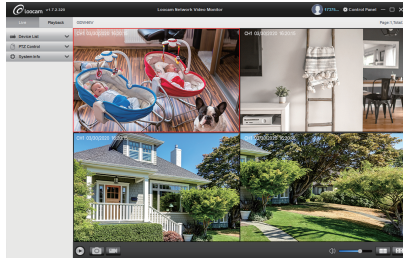
### Add/Manage Device

Click  under Device List to add device, edit device or configure device.



## Live View and Control

Once you have successfully added device, click on the device name of the device you want to view under Device List, select the channels to start viewing.



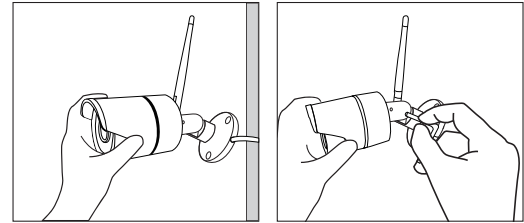
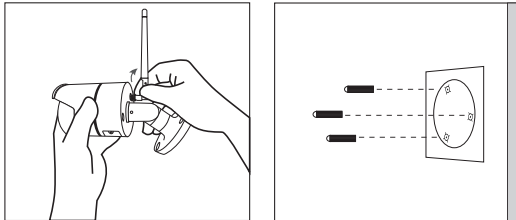
## 7. Camera Installation

Step 1: Loosen the bracket screws, fold the camera bracket and screw the antenna in the corresponding place (as shown in the diagram).

**Note:** Install the cameras at least 7ft. above the ground with antenna vertical for optimal signal.

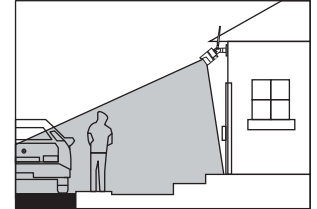
Step 2: Drill holes on the wall according to the position of the mounting hole sticker, and insert the plastic anchors into the holes.

Step 3: Align the mounting hole of the camera with the wall with the plastic anchors, then screw the screws in.



## Installation Tips

- Refer to the image right for the ideal position. It is recommended to place the camera at least 7 ft. above the ground and tilting it towards the area of surveillance for best visual coverage.
- Ensure that the camera has clear line of sight.
- Place the camera at no more than 20 ft away from the area you want to monitor.
- Install the camera within the wireless signal range of the NVR.
- Install outdoor without worry. Cameras have strong weather resistance casing (IP66 full protection grade).
- Install the cameras within the maximum line-of-sight (LoS) distance of 2000ft. from the NVR. The maximum LoS distance will be reduced by each wall, ceiling or major obstruction between the cameras and the NVR.



## 8. Warranty and Support

Loocam Technology LLC provides a one-year limited warranty from the date of purchase. Please keep your dated purchase receipt which is required for limited warranty requests. For more details on warranty, please visit [www.loocam.com](http://www.loocam.com).

If you have any questions in regards to your new Loocam security product, please email us [loocare@loocam.com](mailto:loocare@loocam.com).