

**LIFAN**  
**POWER**  
**USA**  
WWW.LIFANPOWERUSA.COM

# ENERGY STORM



Model ESI-7000iER-EFI

# Operating Instructions & Owners' Manual

Please read this manual carefully before operating your new inverter generator.  
(CA) in the model number designated California Compliant by CARB19/2016



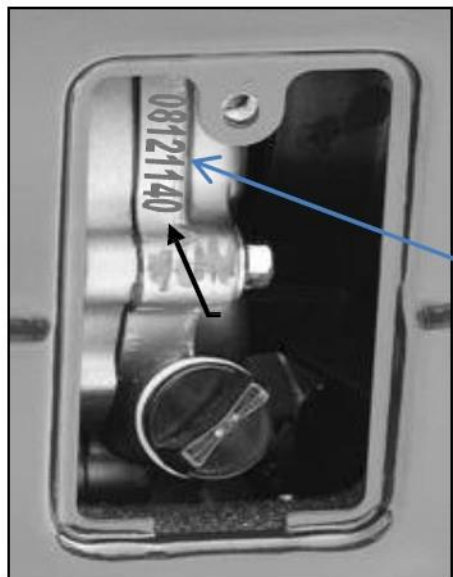


**OPERATING INSTRUCTIONS AND OWNER'S MANUAL**

**Energy Storm Series ESI-  
7000iER-EFI**

ENGINE ID # IS STAMPED  
ON CRANK CASE

PLEASE KEEP AND READ THIS MANUAL  
CAREFULLY BEFORE OPERATING YOUR NEW  
LIFAN POWER USA DIGITAL INVERTER  
GENERATOR



RECORD PURCHASE HERE

MODEL #

---

ENGINE ID #

---

DATE OF PURCHASE

---

PURCHASE LOCATION \_\_\_\_\_

-CA INDICATES THIS UNIT IS CARB  
CERTIFIED

## **ATTENTION: Rental Companies and Private Owners who loan this equipment to others!**

All persons to whom you rent/loan this inverter generator must have access to and read this manual. Keep this owner's manual with the inverter generator at all times and advise all persons who will operate the machine to read it. You must also provide personal instruction on how to safely set-up and operate the inverter generator and remain available to answer any questions a renter/borrower might have.

Only Trained Adults should set up and operate this equipment.  
**DO NOT LET CHILDREN OPERATE THIS EQUIPMENT!**

# 4

Always wear safety apparel when operating this equipment, safety glasses, ear protection, insulated waterproof gloves, and non-slip protective shoes are recommended. When using any cleaning chemicals refer to the chemical label for safety instructions concerning those chemicals for use of a respiration mask.

Never operate or let anyone operate this equipment while under the influence of any alcohol, drugs, or medication or when fatigued.

Owner's Manuals are available from Lifan Power USA at 1-866-471-7464.





# WARNING

## SPECIAL HAZARDS

- CO Poisoning: Exhaust from engine contains carbon monoxide, a poisonous gas that can cause carbon monoxide poisoning and possible death if inhaled.
- Injection Injury: High-pressure spray can pierce skin and underlying tissues, leading to serious injury and possible amputation. Such an injection injury can result in blood poisoning and/or severe tissue damage.
- Flying Debris: High-pressure spray can cause flying debris and possible surface damage.
- Electric shock: Operating equipment in wet conditions or near water can cause electric shock.
- Chemical Exposure: Cleaning chemical vapors or contact with skin may be hazardous.
- Fire/Explosion: Engine sparking can ignite fuel or other flammable liquids or vapors in the vicinity. Hot exhaust from engine can ignite combustible materials.
- Burns: Inverter Generator pump & engine are hot surfaces that can cause burn injuries.

## EQUIPMENT PROTECTION FACTS

**Inspect Upon Delivery:** FIRST! Inspect for missing or damaged components. See “Initial Set-Up/Installation” section for where to report missing or damaged parts.

**Add Engine Oil:** Engine is shipped **without oil**. See the “Engine Manual” section of this manual for instructions on capacity and viscosity recommendations.

**Maintenance Schedule:** Engine requires periodic inspection and servicing to keep generator functioning efficiently. See “Maintenance Schedule Summary” for frequency of servicing.

## TABLE OF CONTENTS

Preface . . . . .	6	Operation of Generator . . . . .	27
Storing The Unit . . . . .	30		
Product Specifications . . . . .	7	Maintenance . . . . .	31



# LIFAN POWER USA

Transporting The Unit . . . . .	36		
Safety Instructions . . . . .	8	Long-Term Storage . . . . .	37
Short-Term Storage . . . . .	37		
Controls and Features . . . . .	12	Exercising The Generator . . . . .	38
Troubleshooting . . . . .	38		
PRE-OPERATING INSTRUCTIONS		Powering 12V DC Devices . . . . .	40
Assembly . . . . .		17	Jump-Starting The
Generator . . . . .	41	18	Digital Display . . . . .
Setup . . . . .	42	22	Error & Fault Codes .
Understanding Your Battery . . . . .	43	Wattage Chart . . . . .	44
Battery Assembly & Maintenance . . . . .	23	24	Limited Warranty
Safety . . . . .		26	Appendix: Exploded
Policy . . . . .	48		
Starting Your Generator . . . . .		Appendix: Wiring Diagram . . . . .	58
View / Parts List . . . . .	52		

## PLEASE READ THE FOLLOWING INSTRUCTIONS!

1. Unit Shipped without engine oil. See Preoperating Instructions for further information.
2. For repair under Warranty or questions concerning Warranty, DO NOT RETURN this product to the Store where purchased. Follow the procedures as outlined in the "WARRANTY POLICY" and "WARRANTY REGISTRATION" in the Owner's Manual. For any questions visit [www.lifanpowerusa.com](http://www.lifanpowerusa.com) or call 1-866-471-7464, Option 2 (Warranty and Service).

3. Read the “Owner’s Manual” prior to operating any equipment and familiarize yourself with the Proper and safe operation of the equipment. If you have any questions, visit [www.lifanpowerusa.com](http://www.lifanpowerusa.com) or call 1-866-471-7464, Option 2 (Warranty and Service).

## PREFACE

Thank you for choosing LIFAN Power USA for your Power Equipment needs. LIFAN Power USA prides itself on providing quality products at affordable pricing, creating the “Best Equipment Value on Today’s Market!”

Your Digital Inverter Generator utilizes our Industrial Grade Gasoline Engines and is intended for OUTDOOR USE ONLY.

All LIFAN Power USA products are manufactured utilizing the latest technology. Built with quality components, your new Power Equipment Product will give you years of dependable service. Your unit, along with all of LIFAN Power USA products are designed, engineered, and manufactured with LIFAN’s Industrial Grade Gasoline Engine.

This Owner’s Manual will provide you with all of your needed information for your new Power Equipment Product, including Safe Operation and Maintenance of your unit. Please keep and read this Owner’s Manual completely and carefully prior to operation.

Keep this Owner’s Manual for assistance in the future, such as proper maintenance schedules and tips to prolong the life and effective use of your unit. If you require assistance, please visit our website ([www.lifanpowerusa.com](http://www.lifanpowerusa.com)) or call toll free 866-471-7464 Option 2, Warranty and Service.

This Owner’s Manual contains information with respect to the newest products at the time of publication. Due to revision and modifications, the information noted in the Owner’s Manual might vary from the actual status. This Owner’s Manual is subject to change without notice. The copyright of the Owner’s Manual belongs to EquipSource, LLC. Any group or individual is forbidden to reprint or copy any of this Owner’s Manual without the written consent of EquipSource, LLC.

FOR ALL WARRANTY AND SERVICE RELATED ISSUES/QUESTIONS DO NOT



# LIFAN POWER USA

RETURN YOUR UNIT TO THE STORE OR DEALER WHERE THE ITEM WAS PURCHASED. FOR SERVICE VISIT LIFAN POWER USA'S WEBSITE ([WWW.LIFANPOWERUSA.COM](http://WWW.LIFANPOWERUSA.COM)) OR CALL 1-866-471-7464 Option 2, Warranty and Service. WE

WILL BE HAPPY TO HANDLE YOUR WARRANTY ISSUE OR DIRECT YOU TO THE NEAREST "AUTHORIZED SERVICE CENTER."





# LIFAN POWER USA



## PRODUCT SPECIFICATIONS

<b>Voltage</b>	120V AC & 12V DC
<b>AC Surge Output<sup>1</sup></b>	7000 watts
<b>Rated AC Output<sup>2</sup></b>	6500 watts
<b>Maximum AC Amperage</b>	48 amps
<b>AC Cycle</b>	60Hz
<b>12V 8.3amp DC Receptacle</b>	1 ea. (T-type)
<b>120V 20a AC Receptacles</b>	2 ea. with ground
<b>120V 30a RV Receptacles</b>	1 ea.
<b>120V 30a 3-prong Twist Lock</b>	1 ea.
<b>Sine Wave Distortion</b>	2% or Less
<b>Auto Idle Feature</b>	Power On Demand
<b>AC Overload</b>	Yes
<b>Exhaust Spark Arrestor<sup>3</sup></b>	Yes
<b>Parallel "Duo-Power" Ready</b>	N/A
<b>Manufacturer</b>	FME
<b>Model</b>	188
<b>Engine Displacement</b>	389cc
<b>Starting System</b>	Remote Electric
<b>Remote Start</b>	Yes
<b>Fuel Tank Capacity</b>	4½ gallons
<b>Fuel Gauge</b>	Yes
<b>Run Time (@ 50% load)</b>	4 hours
<b>Sound Level (@ 7m / 23ft.)</b>	59db
<b>Engine Type</b>	4-Stroke OHV
<b>Fuel Type</b>	Automotive Grade Unleaded Gasoline
<b>Fuel Compliance</b>	10% Ethanol Mix or less
<b>Oil Type &amp; Amount</b>	SAE 10W30 32 oz.
<b>Low Oil Shutoff Protection</b>	Yes
<b>CARB Certified</b>	50 State & Canada Compliant

Length x Width x Height 27 in. x 20 in. x 25 in.

Weight (Lbs.) 181 Lbs.

Battery Charger/Maintainer Included

12V Cord, Plug & Clips 1 ea.

Mobility / Wheel Kit 4 Lock Down Casters



Length x Width x Height 27 in. x 20 in. x 25 in.

Weight (Lbs.) 181 Lbs.

Battery Charger/Maintainer Included

12V Cord, Plug & Clips 1 ea.

Mobility / Wheel Kit 4 Lock Down Casters

POWERED BY





# LIFAN POWER USA

## SAFETY INSTRUCTIONS



This is the safety alert symbol. It is used to alert you to potential personal injury hazards. Obey all safety messages that follow this symbol to avoid possible injury or death.

For your safety, read this manual carefully. Become familiar with the proper operation, care, and maintenance of your LIFAN Power Equipment.

The safety and alert symbol () is used with a signal word (CAUTION, DANGER, WARNING), a pictorial and/or safety message to alert you to hazards.

CAUTION indicates a hazard which, if not avoided, could be harmful, or might result in minor or moderate injury.

DANGER indicates a hazard which, if not avoided, will result in death or serious injury.

WARNING indicates a hazard which, if not avoided, could result in death or serious injury.

## HAZARD SYMBOLS AND MEANINGS



EXPLOSION



FIRE



ELECTRIC SHOCK






TOXIC FUMES



HOT SURFACE



KICKBACK

 <b>DANGER</b>	
Using a generator inside CAN KILL YOU IN MINUTES	
Generator exhaust contains carbon monoxide. This is a poison that you cannot see or smell.	
 NEVER use inside a home or garage, EVEN IF doors and windows are open.	 Only use OUTSIDE and far away from windows, doors, and vents
Avoid other generator hazards, READ MANUAL BEFORE USE	

 <b>DANGER</b>	
El uso de un generador en el interior PUEDE MATARLO EN POCOS MINUTOS.	
El escape del generador contiene monóxido de carbono. Esto es tóxico y do debe verlo u olerlo.	
 NUNCA utilice dentro de una casa o un garaje, AÚN cuando las ventanas y las puertas estén abiertas	 Utilice únicamente en el EXTERIOR y lejos de ventanas, puertas o rejillas de ventilación.

 <b>DANGER</b>	
L'utilisation d'une génératrice à l'intérieur PEUT VOUS TUER EN QUELQUES MINUTES.	
Les gaz d'échappement de la génératrice peuvent contenir du monoxyde de carbone, un poison que vous ne pouvez pas voir ni sentir.	
 NE JAMAIS utiliser a l'intérieur d'une maison ou d'un garage, MEME SI les portes et fenêtres sont ouvertes.	 Utiliser uniquement à l' EXTERIEUR et loin des fenêtres, portes et ouvertures d'aération.

	<b>WARNING</b>	
<b>Fuel and its vapors are extremely flammable and explosive. Fire or explosion can cause severe burns or death.</b>		





# LIFAN POWER USA



## WARNING

Running generator emits **carbon monoxide**: an odorless, colorless, **poisonous gas**. Breathing carbon monoxide can cause **nausea or death!**



ONLY operate generators outdoors.

Exhaust gas must be prevented from entering confined areas.

Direct exhaust gas away from windows, doors, ventilation, and other openings.

Do not operate this generator inside or under any buildings.



## WARNING

The engine exhaust from this generator contains chemicals known to the state of California to cause birth defects, reproductive harm, and cancer.



## WARNING

Rapid recoil of starter cord (kickback) may pull hand and arm forward toward engine at a rapid rate. Broken bones, bruises, sprains, and fractures may result.

### WHEN ADDING OR DRAINING FUEL

- Turn inverter generator off and let it cool for at least three minutes before removing fuel cap. Loosen cap slowly in order to relieve pressure in the fuel tank.
- Fill or drain fuel tank outdoors. Do not excessively inhale fuel vapors. • Keep away from open flames or sparks and other sources of ignition.
- Do NOT smoke while filling fuel tank.
- Do NOT overfill tank. Allow space for fuel expansion.

### WHEN TRANSPORTING OR REPAIRING EQUIPMENT

- Transport inverter generator with the fuel valve in the off position.
- Repair inverter generator with the fuel tank empty or the fuel valve in the off position.
- Disconnect spark plug wire before transport or service.

### WHEN STORING FUEL OR EQUIPMENT CONTAINING FUEL

- Store away from furnaces, stoves, water heaters, clothes dryers or other appliances that have pilot light or other ignition source because they can ignite fuel vapors.

### WHEN STARTING EQUIPMENT

- Ensure spark plug, muffler, air cleaner, and fuel cap are in place.



# LIFAN POWER USA

- Do NOT crank engine with spark plug removed.
- If fuels spills, wait until it evaporates before starting engine.

### WHEN OPERATING EQUIPMENT

- Do NOT choke carburetor to stop engine.
- Do NOT tip engine or equipment at an angle, which causes fuel to spill.



## WARNING



**While engine is running temperature may exceed 150°F (65°C). Severe burns may occur.**



## WARNING



**Unintentional sparking can result in fire or electrical shock.**

## CAUTION!

**Improper use and care of this inverter generator will cause damage and shorten its lifespan. Failure to follow these actions will void all warranties.**

- Use inverter generator only for appropriate and designated purposes.
- The dealer or customer helpline (1-866-471-7464) can instruct you on intended uses.
- Inverter generator must be placed on a level surface.



- Do NOT expose inverter generator to extreme conditions. Excessive dust, moisture, and corrosive vapors will damage unit.
- Engine cooling slots must be kept clear of debris.
- Shut off inverter generator and take to a qualified service center if the unit fails to operate properly.

## Automotive Type Electronic Fuel Injection System



This generator has a computer-controlled fuel and ignition system. An on-board computer, referred to in this manual as an ECU (Engine Control Unit) utilizes a series of virtual maps (lookup tables) that provide values for various aspects of engine performance. The ECU analyzes data provided through the various engine sensors to determine the best combination of values from these lookup tables to provide optimum performance. This is communicated to the generator components through the use of digital signals. This is in contrast to noncomputer-controlled ignition systems that rely on mechanical feedback, and sometimes vacuum, to control the motion of the various components.

This generator is equipped with an Electronic Fuel Injection (EFI) system, which provides increased efficiency over carbureted fuel systems. In a carbureted fuel system, the fuel and air are mixed in a carburetor that relies on a mechanical choke system controlling the rate of air intake to maintain the vacuum necessary to mix the fuel with air for combustion.

In a fuel injection system, the ECU calculates and adjusts the fuel mixture directly, based on real-time feedback, allowing for greater fuel and emissions efficiency. The ECU also controls the timing for the spark plug, dynamically controlling the speed of the engine depending on requirements for power generation.



# LIFAN POWER USA

When there is a problem reported by a generator component (such as an engine sensor), the ECU stores a fault code for it. These fault codes can be read in the Wattage (P) field of the digital display, and then used to identify the issue and correct it. For more information on fault codes and how to access them, refer to the Fault codes section of this manual. For more information on the digital display and its use, refer to the Digital display section of this manual.



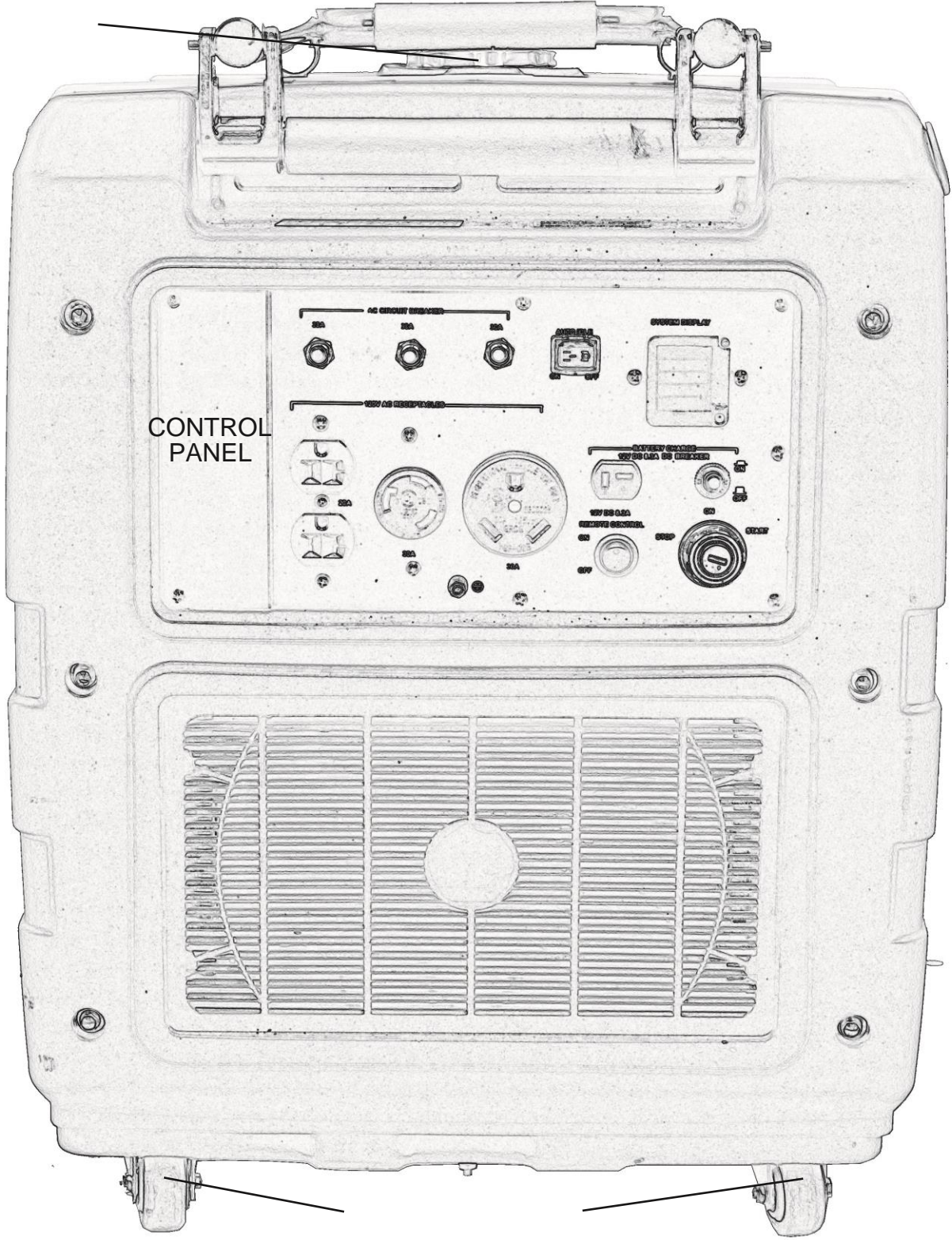
# LIFAN POWER USA

## CONTROLS AND FEATURES





# LIFAN POWER USA

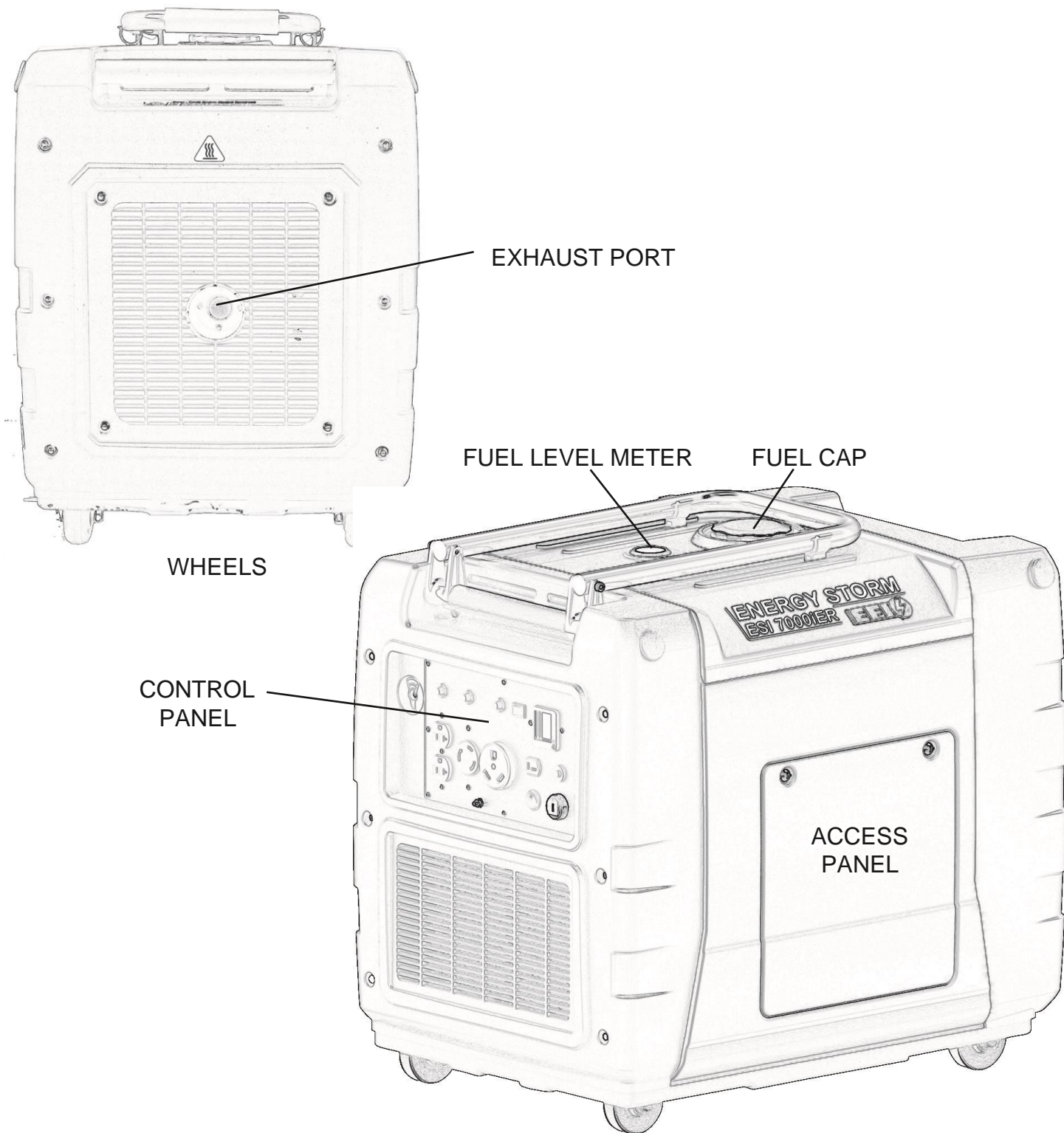






# LIFAN POWER USA

## CONTROLS AND FEATURES

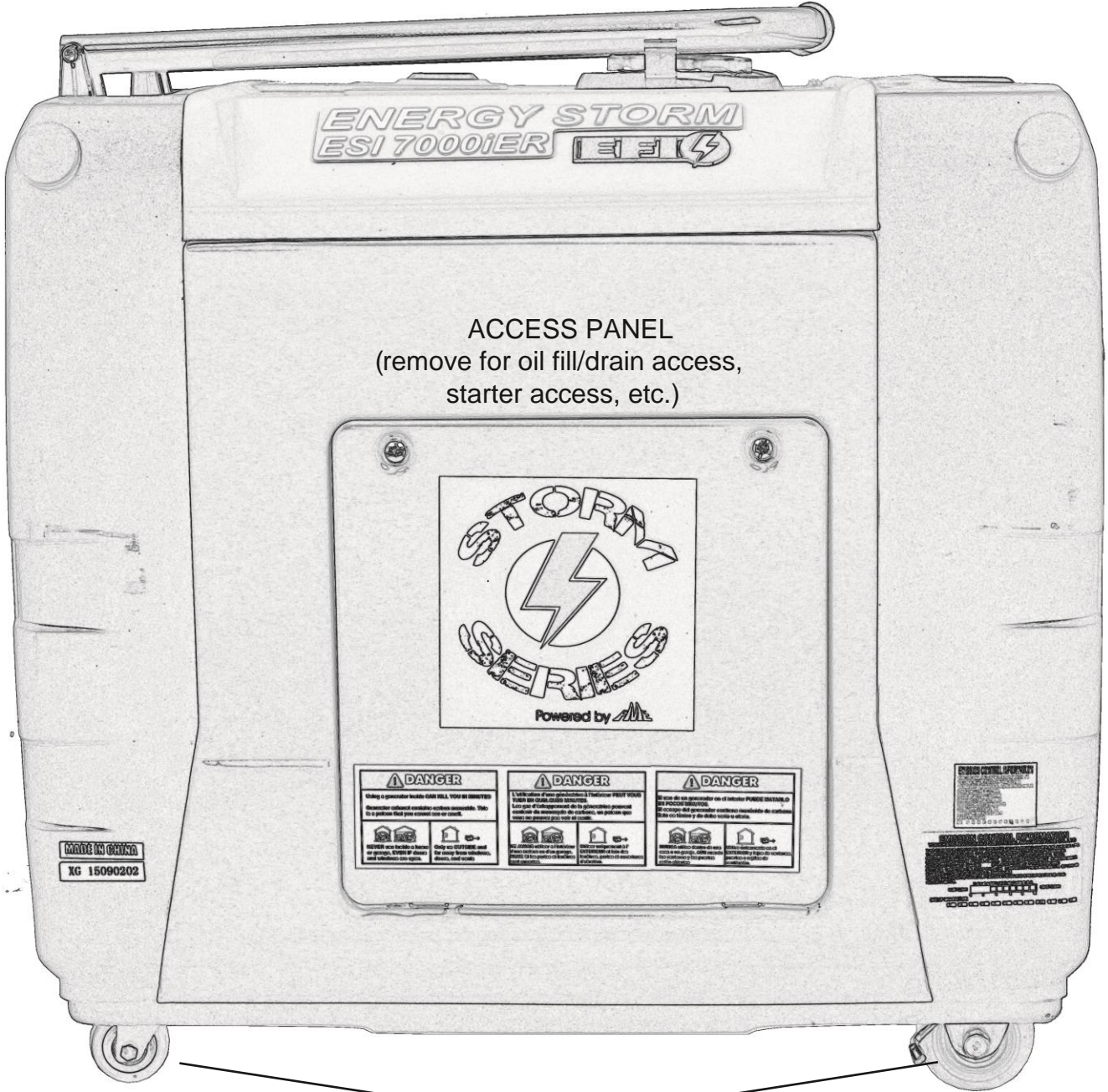




# LIFAN POWER USA

## CONTROLS AND FEATURES

FOLDING HANDLE



ACCESS PANEL  
(remove for oil fill/drain access,  
starter access, etc.)



<p><b>⚠ DANGER</b></p> <p>Using a generator inside your home can be DANGEROUS. Generator exhaust contains carbon monoxide. This is a poison that you cannot see or smell.</p> <p><b>NEVER</b> use inside a home or garage, EVER! If using in a confined space, use proper ventilation.</p>	<p><b>⚠ DANGER</b></p> <p>El uso de un generador dentro de su hogar puede ser PELIGROSO. Los gases de escape de la generadora pueden contener monóxido de carbono, un gas que usted no puede ver ni oler.</p> <p><b>NEVER</b> utilizar dentro de un hogar o un garaje, NUNCA. Si utilizar en un espacio confinado, asegure una adecuada ventilación.</p>	<p><b>⚠ DANGER</b></p> <p>El uso de un generador en el interior puede ser PELIGROSO. Los gases de escape de la generadora pueden contener monóxido de carbono, un gas que usted no puede ver ni oler.</p> <p><b>NEVER</b> utilizar dentro de un hogar o un garaje, NUNCA. Si utilizar en un espacio confinado, asegure una adecuada ventilación.</p>
--	--	--

LOCKING CASTER WHEELS





# LIFAN POWER USA

## CONTROLS AND FEATURES

FOLDING HANDLE



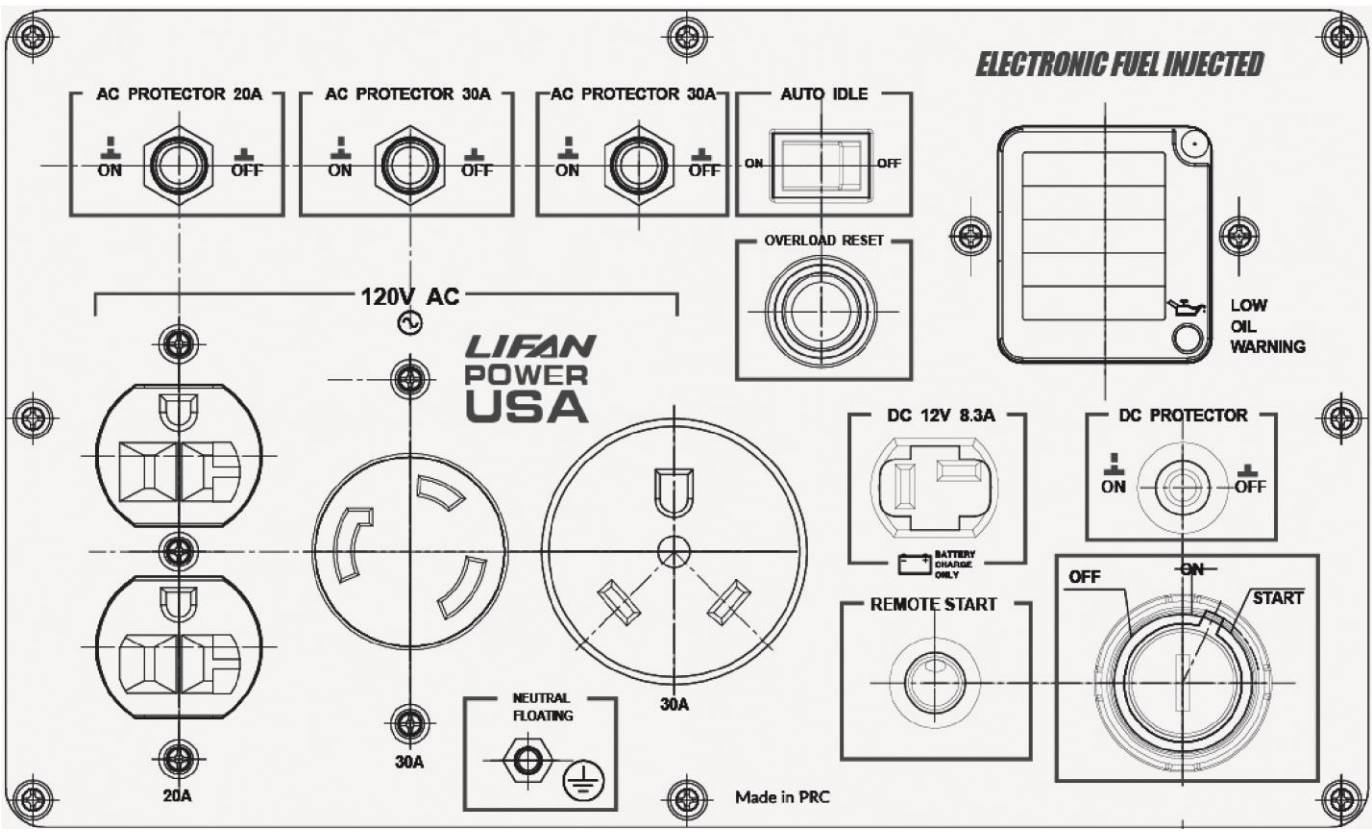
ACCESS PANEL  
(remove for maintenance of air  
cleaner element, spark plug, valve  
adjustment, etc.)

LOCKING CASTER  
WHEELS



# LIFAN POWER USA

## CONTROLS AND FEATURES





## BOX CONTENTS



1

x RV Adapter Plug for

• Generator 1 x 12 Volt Power Cord with Plug 120 Volt 30amp

• Accessory Kit & Alligator Clips Service

1 x Spark Plug Removal Tool

1 x NEMA14-30 Male Twist Lock

1 x Owner's Manual and

1 x Oil Drain Tube

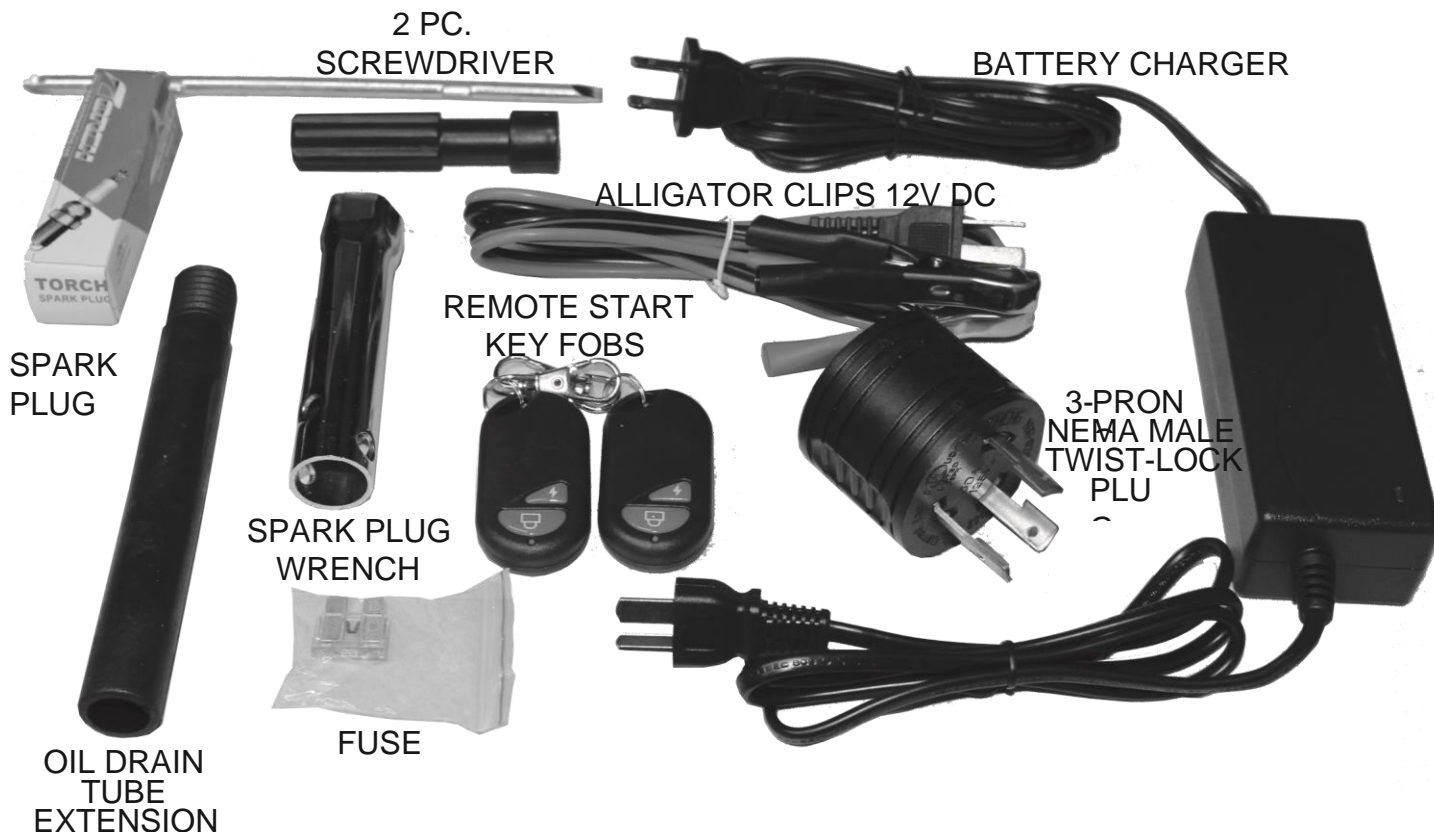
Plug

Warranty Card



# LIFAN POWER USA

## PRE-OPERATING INSTRUCTIONS: ASSEMBLY



Your LIFAN Power USA generator is packaged without fuel and oil. Some assembly is required before operating your LIFAN Power USA Generator.

For further assistance in assembling your generator, please visit our website ([www.lifanpowerusa.com](http://www.lifanpowerusa.com)) or call 1-866-471-7464 between the hours of 9am- 5pm Monday- Friday.

### UNPACKING THE GENERATOR:

1. Set the Carton on a Flat, Rigid Surface.
2. Remove All Contents from Carton EXCEPT Inverter Generator.
3. Open Box Completely by lifting box cover.
4. Carefully lift the Inverter Generator off the remaining box and onto the Flat, Rigid Surface.

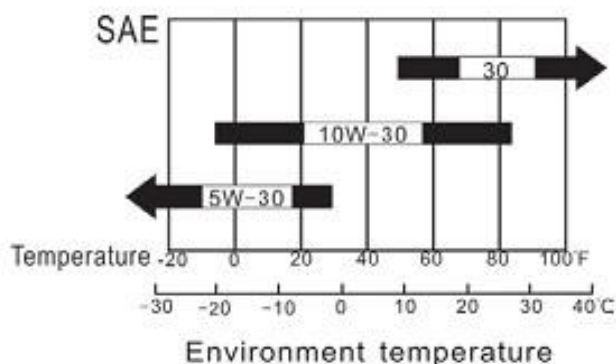
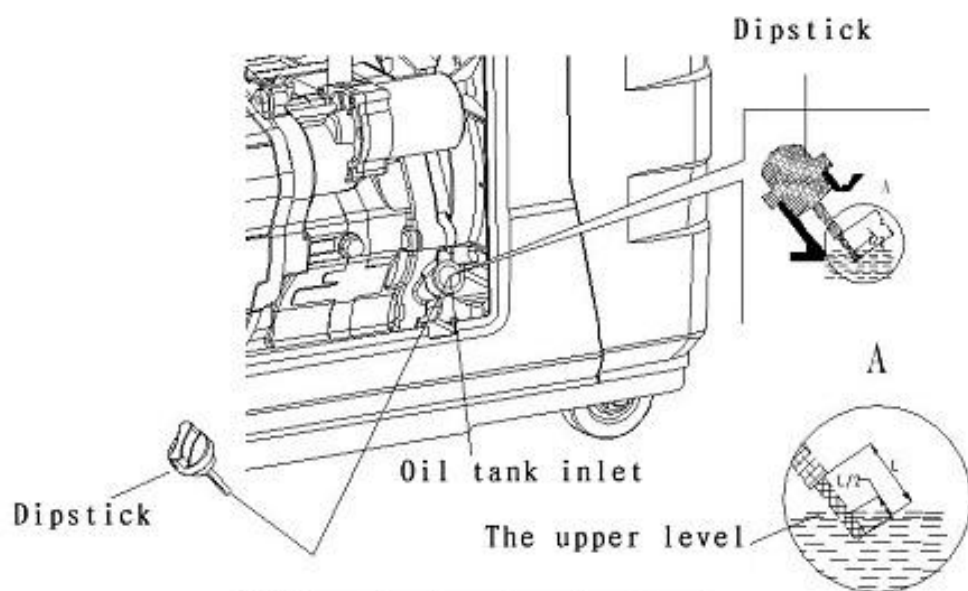
# LIFAN POWER USA

## PRE-OPERATING INSTRUCTIONS: SETUP

**CAUTION:** Any attempt to start the generator before it has been properly serviced may result in engine failure and void warranty.

ADD ENGINE OIL: Refer to the diagrams below.

1. Place generator on level surface.
2. Remove the Right Access Panel (Refer to Controls and Features section).
3. Clean area around Oil Hole Dipstick/Plug & Unscrew Oil Hole Dipstick/Plug.
4. Use Supplied Funnel to Fill with appropriate type and amount of oil using Oil Fill Bottle. Refer to Chart below for recommended oil type based on Environmental temperature.  
NOTE: Refer to "Product Specifications" section for universal recommended oil type and oil amount.
5. Replace Oil Hole Dipstick/Plug and tighten securely.
6. Replace the Right Access Panel.







# LIFAN POWER USA

## PRE-OPERATING INSTRUCTIONS: SETUP



### WARNING



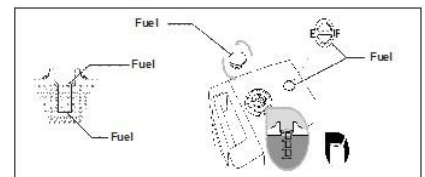
**Fuel and its vapors are extremely flammable and explosive. Fire or explosion can cause severe burns or death.**

#### WHEN ADDING FUEL

- Turn generator off and let it cool for a minimum of three minutes before removing fuel cap.
- Turn and remove cap slowly in order to relieve residual tank pressure.
- Always fill the fuel tank with the unit outdoors.
- DO NOT overfill tank. Allow room for fuel expansion.
- Keep fuel away from sparks, open flames, heat, pilot lights, and other ignition sources.

#### ADD FUEL: Refer to Controls and Features section for diagrams.

1. Clean area around fuel cap, then remove fuel cap.
2. Pour fresh, clean regular automotive grade unleaded fuel with a minimum octane rating of 85 into fuel tank. Do NOT mix fuel with oil. Fuel must have ethanol blend of 10% or less. Pay close attention to the storage requirements of these fuels. Do NOT overfill fuel tank.
3. Install the fuel cap. Rotate the fuel cap clockwise until it is in its locked position. Wipe away any spilled fuel.



**CAUTION:** Alcohol-blended fuels (gasohol, ethanol, or methanol) will attract moisture, which leads to separation and formation of acids during storage. Acidic gas can damage the fuel system of an engine while in storage. To avoid engine problems, the fuel system should be treated with a fuel stabilizer or drained if the generator will not



# LIFAN POWER USA

be started for thirty (30) days. If using a fuel stabilizer, follow the manufacturer's recommended instructions for use.

**NEVER** use chemical solvents or cleaners in the fuel tank for damage may occur.



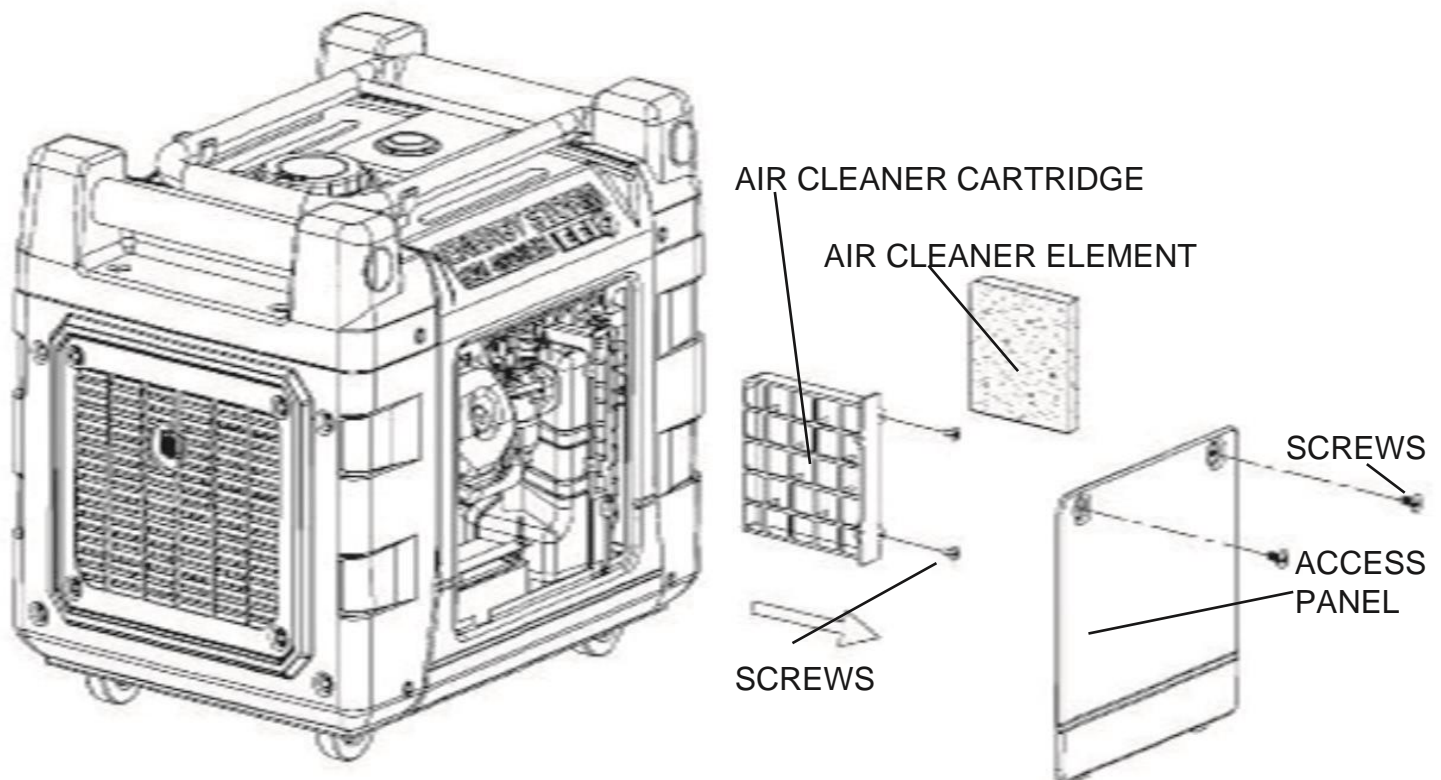
# LIFAN POWER USA

## PRE-OPERATING INSTRUCTIONS: SETUP

**CAUTION:** Any attempt to start the generator before it has been properly serviced may result in engine failure and void warranty.

CHECK AIR CLEANER ELEMENT: Refer to diagram below.

1. Remove the Left Access Cover (Refer to Controls and Features section).
2. Remove the Air Cleaner Case.
3. Pull out the Air Cleaner Cartridge, following the direction of the arrow.
4. Check the cleanliness of the Air Cleaner Element.
5. Clean/Replace if needed.
6. Reinstall the Air Cleaner Element.
7. Reinstall the Air Cleaner Case.
8. Reinstall the Left Access Cover.



## PRE-OPERATING



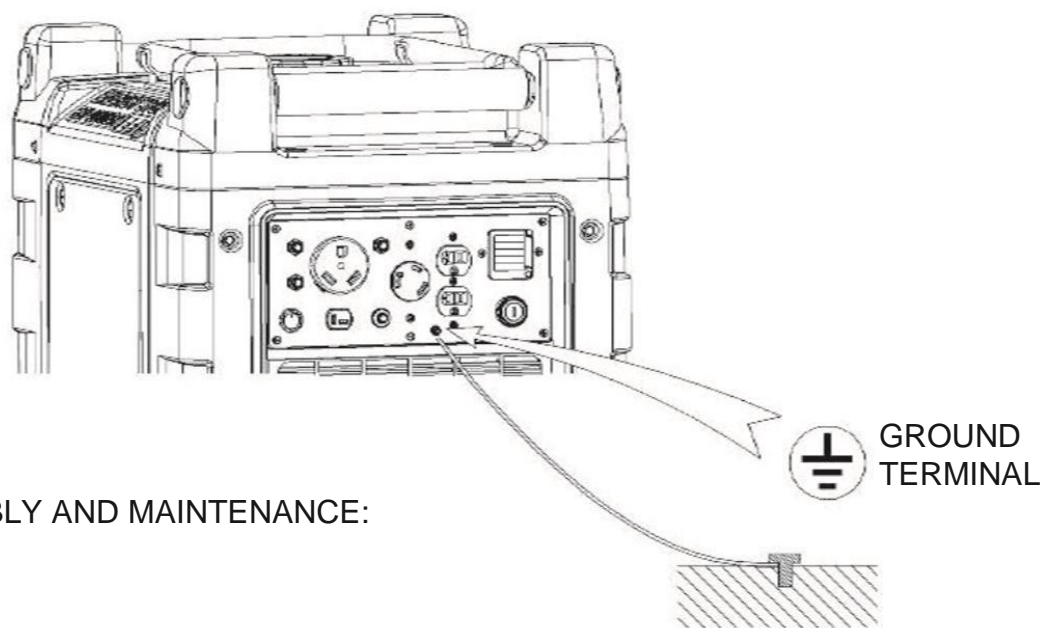


# LIFAN POWER USA

## INSTRUCTIONS: SETUP

GROUNDING THE GENERATOR: Refer to the diagram below.

1. Connect the Ground Terminal on the generator to an acceptable source of electrical ground,



BATTERY ASSEMBLY AND MAINTENANCE:

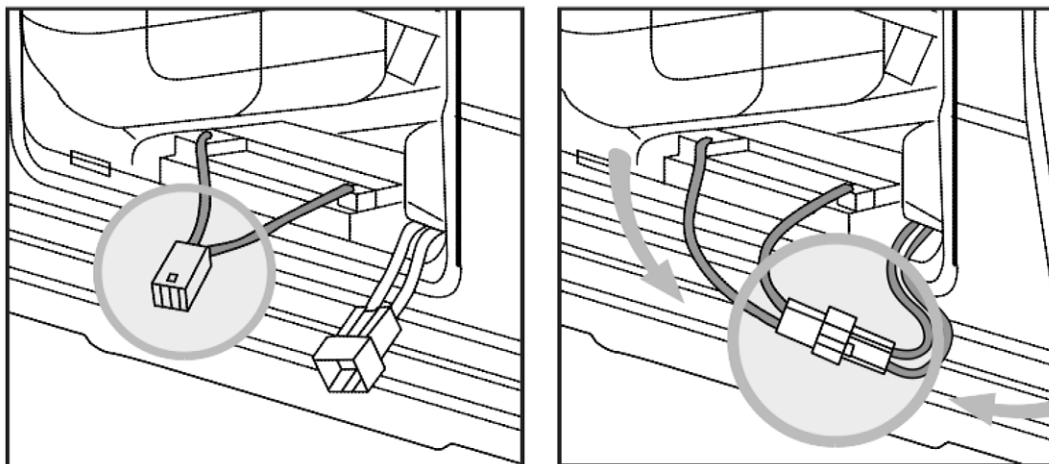
such as a copper-grounding stake, using copper electrical wire with a minimum diameter of 16 gauge.

1. Remove Left Access Panel.
2. Insert battery into battery tray.
3. Install battery cover and tighten clamping nuts.



# LIFAN POWER USA

4. Disassemble the setscrew, then connect the wires.  
The red terminal is anode (+) and the black terminal is cathode (-).
5. Reinstall Left Access Panel.



## UNDERSTANDING YOUR BATTERY

When the key is turned to the ON position the display illuminates, the ECU turns on, the fuel pump turns on long enough to bring up the fuel pressure, and the stepper motor is energized for proper throttle position for starting. Because of the power requirements of these components, the battery in this generator is considered dead at a higher voltage than it would be in other types of equipment. The battery must have a charge of at least 10.5V to be able to start the generator, even by recoil. If the battery has a charge in the range of 10-10.5V, the generator may crank very well, but the starter will be drawing most of the power, depriving the other components of the power they need to successfully start the generator. There must be a battery charge in excess of 10.5V to ensure that all of the components have the power necessary to start the generator.

During normal use, the generator engine will be shut off with either the remote fob, the ignition key, or by pressing the red STOP button on the control panel. This manual provides instructions, notes, and warnings dealing with each of those methods of stopping the generator. But the engine may shut off for any of the following reasons:

- The generator may run out of gas.
- The generator may run low on oil.



# LIFAN POWER USA

- The ECU may shut off the engine due to an error reported by a sensor.

These shutdowns may occur when you are not present. When the generator engine shuts off, there will still be a drain on the battery due to the display, the ECU, and the stepper motor, as long as the key is in the ON position. Although the ESI-7000iER-EFI is equipped with a sleep mode that shuts down these components when the generator is not running, the sleep mode circuit will still be monitoring the generator, and over time this circuit will drain the battery below the 10.5V necessary to start the generator. ***You must turn the key to the OFF position, and turn off the remote switch, to shut off the electronics completely.***

## UNDERSTANDING YOUR BATTERY

If you are operating the generator through the remote fob and the engine is not running, the remote switch will blink red to remind you to turn the remote switch off. Whenever the remote switch is on, it is drawing current from the battery. When the engine is not running, the battery will not be charged to compensate for the load from the remote receiver, and over time the battery will be drained below the 10.5V necessary to start the generator. You must turn off the remote switch when you will not use the remote fob to start the generator.





# LIFAN POWER USA

If the generator will not start, check the battery voltage with a voltmeter. You can access the battery through the left maintenance door, or you can simply check the voltage through the battery charge receptacle on the control panel. This receptacle is connected directly to the battery, so it can be used without the generator running, or the key in the ON position, or the remote switch on.

If the battery voltage is below 10.5V, you must charge the battery by connecting the included battery trickle charger to the battery charge receptacle on the control panel (“backcharging”), or directly to the battery leads. Allow the battery to charge fully before attempting to start the generator.



## **BATTERY ASSEMBLY AND MAINTENANCE:**

1. Remove Left Access Panel.
2. Insert battery into battery tray.
3. Install battery cover and tighten clamping nuts.
4. Disassemble the setscrew, then connect the wires. The red terminal is anode (+) and the black terminal is cathode (-).
5. Reinstall Left Access Panel.



# LIFAN POWER USA



## WARNING



- To prevent electrical shock from faulty appliances, the generator should be grounded. Connect a length of heavy cable between the generator's grounding terminal and an external ground source.

This generator is not intended, nor designed, for use as a standby power

supply, or to be connected to an automatic transfer switch (ATS); it should **WARNING** never be used as such. Severe property damage and/or severe personal injury or death may result. Such back feed may electrocute utility company workers or others who contact the lines during a power outage. When utility power is restored the generator may explode, burn, or cause fires in the building's electrical system.

- Indoor use of a generator can kill quickly. Generators should be used outdoors only.



- The total wattage of all appliances connected must be considered.
- Do not exceed the current limit specified for any one receptacle.
- Do not connect the generator to a household circuit. This could cause **CAUTION** damage to the generator or to electrical appliances in the house.

- Do not modify or use the generator for purposes other than its intended use.
- Do not connect an extension to the exhaust pipe.
- When an extension cord is required, be sure to use a rubber sheathed flexible cord. Also be sure to use the proper size and length cord.
  - 16 Gauge Cords - a 16 gauge cord between 0 and 100 feet long will safely handle tool and appliance loads up to 10 amps.
  - 14 Gauge Cords - a 14 gauge cord between 0 and 50 feet long will safely handle tool and appliance loads between 10 and 15 amps.
  - 12



# LIFAN POWER USA

Gauge Cords - a 12 gauge cord between 50 and 100 feet will safely handle tool and appliance loads between 10 and 15 amps.



## WARNING

- Only operate generator outdoors.
- Prevent exhaust gas from entering, through windows doors or ventilation intakes, any confined areas.
- DO NOT operate generator inside any enclosed or roofed areas. This includes the generator compartment of any recreational vehicle (RV).
- Keep the generator away from other electric cables or wires such as commercial power supply lines.
- The DC receptacle (in the Battery Charge section of the control panel) can be used while the AC power is in use. If you use both at the same time, be sure not to exceed the total power for AC and DC.
- Most appliance motors require more than their rated wattage for start-up.
- It is normal for the run time indicator to have 1-2 hours on the meter from the factory for testing and quality assurance inspections.
- This generator uses a system ground which connects the ground terminals in the AC receptacles on the control panel to the unit frame. The AC neutral wire is not connected to the system ground. If you check the receptacles on this generator with a receptacle tester, the ground circuit condition will appear different than it would for a receptacle in your home.



**Never start or shutoff the generator with electrical loads connected and in the operational mode (on switch activated).**

1. Unplug all electrical loads from the generator.

**CAUTION** 2. Make sure the generator is in a level position.





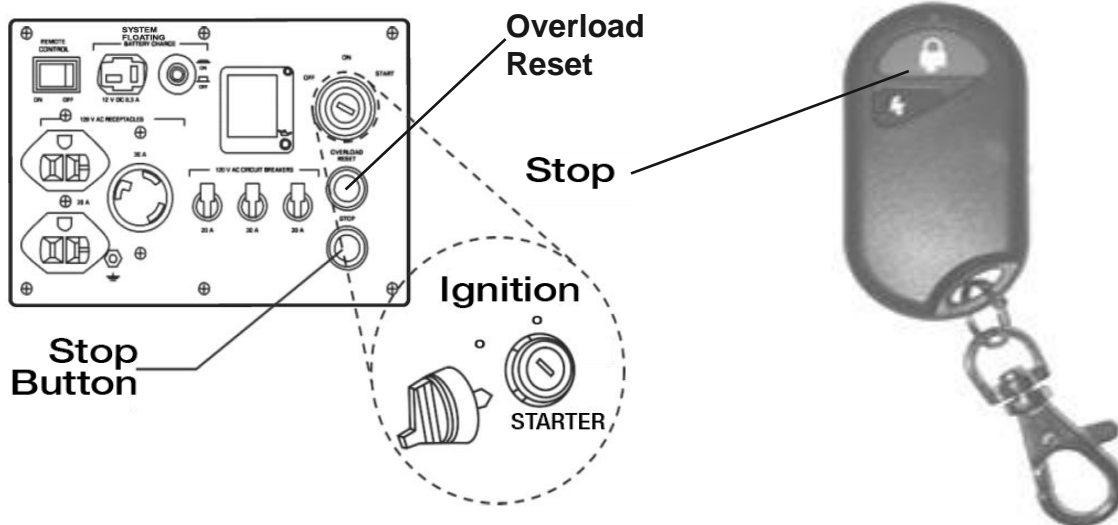
# LIFAN POWER USA

3. Open the Fuel Valve by turning the Fuel Valve to the “ON” position.

## ELECTRIC-START MODELS

Your ESI 7000iER-EFI is Electric Start Only.

4. Using provided key, turn the ignition switch to the “ON” position. Rotate the key one more position to the “START” position in order to engage the starting motor. Hold key switch in the “START” position until engine starts, for NO MORE than 10 engine rotations. If the engine does NOT start, repeat procedures beginning with Step One (1).



## REMOTE START MODELS

1. Place the remote start switch on the control panel in the “ON” position.

**CAUTION:** Leaving the remote start switch in the “ON” position for more than six hours without operation will result in a dead battery and the inability to start the unit with the key switch or the remote start.

2. Double-click and hold the “ON” button (marked with a lightning bolt) on the remote start until the engine starts.



# LIFAN POWER USA

NOTE (all models): If generator does not start within three pulls, check the crankcase oil level. The engine’s “Low Oil Shutdown Protection” circuit may be activated and preventing the engine from starting.

NOTE (all models): Unit is equipped with an Automatic Choke.

## OPERATION OF GENERATOR GENERATOR OVERLOAD

1. Ensure engine is started and Green power Indicator Light illuminates before plugging in any electrical appliance.
2. Plug in desired 120 Volt load to the 120 Volt U-Ground receptacles. Always plug appliances into the generator with appliance in its “OFF” position.
3. Plug in 12V DC load to the DC receptacle. DC and AC power may be used simultaneously. Circuit Breaker may need to be re-set before using 12V receptacle. When charging 12V batteries insert the charging plug into the DC socket and then connect the terminals to the battery. After charging is complete, remove battery terminal first, then un-plug charging plug from generator. Remove the ground wire of Car Batteries prior to charging and re-connects after charging is complete to avoid short circuit or spark.
4. Do NOT connect 240 Volt loads to the 120 Volt receptacles.
5. Only connects single-phase 60 Hertz loads.
6. DO NOT OVERLOAD THE GENERATOR. FOLLOW THE PROVIDED “GENERATOR WATTAGE REFERENCE WORKSHEET” TO DETERMINE THE RUNNING AND STARTING WATTAGE OF YOUR EQUIPMENT, REFER TO THE PRODUCT SPECIFICATIONS TO ENSURE YOUR GENERATOR WILL OPERATE THE DESIRED EQUIPMENT.



**Repeated, substantial overloading that reports an overload condition to the digital display may damage the generator. Marginal overloading that temporarily reports an overload may shorten the service life of the generator.**

1. Remove all electrical loads from the generator and investigate **CAUTION** the cause of the overload.
2. Press the (green) overload reset button or reset the circuit protector.

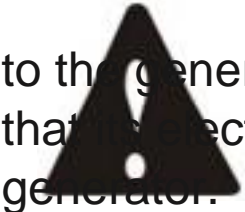
The digital display will remain illuminated and returning data during normal operating conditions.



# LIFAN POWER USA

If the generator is overloaded (in excess of 4000 W), or if there is a short in the connected appliance, the values in the digital display will become zero, the message OVER will appear in the wattage (P) field of the display, and the power output will stop.

## OPERATION OF GENERATOR HOW TO USE YOUR GENERATOR

 Before connecting or reconnecting an appliance to the generator, check that it is in good order, and that its electrical rating does not exceed that of the generator.

This generator has been designed to prevent the engine from “overspeed” revving. Overspeed revving occurs when a generator’s on-board monitoring systems detect a drop in voltage from the inverter, and the generator attempts to compensate by revving the engine higher to generate more electricity. In the rare event of an inverter failure, there will be no voltage output from the inverter, and the engine will remain revving at or close to its top speed. Overspeed revving for a prolonged period can damage internal components due to increased heat from the engine. With an inverter failure, each of the following three symptoms will be present:

- The ECU will draw the engine down to idling speed.
- The digital display will indicate zero (0) Volts.
- The 120 V receptacles will not supply voltage, regardless of breaker settings.

If your generator exhibits this behavior (it only idles, producing no voltage), take the generator to an authorized Lifan Power USA service center for servicing.

**NOTE:** Use the running and starting wattage provided by the equipment manufacturer if available. If not available, use provided “Generator Wattage Reference Worksheet.”

### OUTPUT AND OVERLOAD INDICATOR:

The GREEN Output Indicator Light will illuminate at normal operating conditions.





# LIFAN POWER USA

The RED Output Indicator Light will illuminate when the generator is overloaded, if there is a short circuit in a connected appliance, or if Low Oil Alarm System has been tripped.

If the RED Output Indicator Light illuminates, STOP the engine and determine the cause of overload by:

## OPERATION OF GENERATOR HOW TO USE YOUR GENERATOR

- Checking the appliance(s) for proper operation, electrical shorts, and malfunctions. Also ensure the generator has the ability to provide the required starting and running watts of the connected appliance(s).
- Ensuring all appliances is in the "OFF" position upon starting the generator. Only start the connected appliance(s) when the GREEN Output Indicator Light is illuminated and the generator is providing the necessary power to run the connected appliance(s).

Before connecting or reconnecting an appliance to the generator, check that it is in good order, and that its electrical rating does not exceed that of the generator.

Reset power output after overload has been corrected by depressing the overload reset button.

### LOW OIL ALARM SYSTEM:

This model is equipped with a Low Oil Alert System designed to avoid engine damage from insufficient oil in the crankcase. The Low Oil Alarm System will stop the engine automatically before the oil level in the crankcase drops below safe operating levels. This will cause the RED Output Indicator Light to illuminate. Though the engine will stop running, the ignition switch will remain in the "START" position. Turn to the "STOP" position.

### STOPPING THE GENERATOR

Refer to Controls and Features section for diagram.

### EMERGENCY SHUTDOWN

1. Push the on/off switch to the "off" position.

### NORMAL SHUTDOWN

1. Unplug all electrical loads or turn the main breaker to the "OFF" position.
2. In order to stabilize internal equipment temperatures, allow the engine to run for 3- 5 minutes under no load.
3. If the generator will not be in use for more than 7 days, turn the fuel valve to the "OFF" position and allow the unit to run until the fuel in the carburetor is used and the engine shuts itself off.
4. Turn the ignition switch to the "STOP" position.
5. Allow unit to cool to ambient temperature before storage or transportation.



# LIFAN POWER USA

6. Always transport the generator with the fuel valve in the “OFF” position. Failure to do so will result in damage to the engine.

## REMOTE SHUTDOWN

1. Press and hold the “OFF” button (marked with a padlock) on the remote start.



# LIFAN POWER USA

## OPERATION OF GENERATOR

### USAGE IN HIGH ALTITUDE REGIONS:

At high altitude, performance will decrease. Engine horsepower will decrease approximately 3.5% for each 1000 feet (305 meters) increase in altitude. At higher altitudes, the density of the atmosphere decreases, so there is less oxygen volume to draw into the cylinder. This means

there will be less energy for every power stroke. **STORING THE UNIT**

**Before long term storage of your power equipment product, typically 30 days or more, perform the following:**

1. Set the Fuel Valve to the “OFF” position.
2. Let the unit continue to run until it stops itself, burning all of the fuel in the fuel system.
3. Turn the ignition switch to the “STOP” position.
4. Drain the engine oil in accordance with the “Oil Change Procedures” in this Owner’s Manual’s Maintenance section. Do NOT re-fill with oil until ready to use again.
5. Remove the Spark Plug in accordance with the “Spark Plug Maintenance” in the Owner’s Manual’s Maintenance section. Spray a lubricant, such as WD40®, into the Spark Plug hole to lubricate the top of the piston and walls of the cylinder. Replace the Spark Plug.
6. Add the recommended amount of fuel stabilizer, in accordance with the amount recommended by the manufacturer of the fuel stabilizer, to the unused gasoline left in the fuel tank.
7. Place the unit in a clean, dry, and secure location.
8. Cover with “LIFAN Water Proof Generator Cover,” Item Number LF100-69600 not included) or canvas/vinyl tarpaulin. Do NOT operate unit with cover installed.

## MAINTENANCE

**NOTE:** Refer to Following Procedures for Proper Method to Perform Maintenance



# MAINTENANCE SCHEDULE

Item	Maintenance Procedure	Regular Service period (1). Perform at every indicated month or operating hour interval, whichever occurs first.				
		Each Use	1st Month or 4 to 6 Hours	Every 3 Months or 50 Hours	Every 6 Months or 100 Hours	1x per Year or 300 Hours
Engine Oil	Check	○				
	Change		○		○	
Air cleaner	Check				○	
	Clean			○ (2)		
Spark Plug	Clean / Adjust				○	
Spark Arrester	Clean				○	
Fuel Filter	Check				○	
	Replace					○ (2, 3)
Valve clearance	Check / Adjust					○ (4)
Fuel tank & strainer	Clean					○ (2)
Fuel line	Check	Every 2-years (Replace as necessary) (3)				
Battery	Clean / Charge	Charge monthly during long term storage. Check terminals for corrosion monthly, clean as needed. Expected battery life is 2 years, but can be affected by operating environment.				

**Notes:**

(1) Log hours of operation to determine proper maintenance.

(2) Service more frequently when used in dusty areas.

(3) This fuel filter allows access to the fuel injector, so maintenance must be done in sanitary conditions. Allowing dust or dirt during maintenance may create problems. After checking or replacing, verify that the fuel filter is not leaking.

(4) These items should be serviced by an authorized dealer unless the owner has the proper tools and is mechanically proficient. See the Service Manual.

Service Period for Oil Changes	Normal Operating Temperature
Normal –100 hr	77°F (25°C)
95 hr	86°F (30°C)
85 hr	95°F (35°C)
70 hr	104°F (40°C)

## MAINTENANCE

### OIL CHANGE PROCEDURES:

Periodic Maintenance of your engine oil should be performed after each 40 hours of use of you Power Equipment Product. Check your engine oil level prior to each use.



# LIFAN POWER USA

1. Start your engine and let it warm up to get the oil warm and thinner. Turn the ignition switch to the "STOP" position.
2. Remove the Right Access Cover.
3. Remove the oil cap/dipstick by turning counter clockwise. Remove the oil drain plug located below the oil cap/dipstick utilizing the appropriate tools. **USE CAUTION: THE OIL MAY BE HOT.**

4. **Drain the engine oil using the provided Oil Drain Tube Extension** approved receptacle and discard in accordance with all Federal and Regulations. Never dump the used engine oil on the ground or into only discard in an approved manner. Check with your local authorities to determine the regulations in your area.

**WARNING! AVOID SPLASHING OF HOT OIL; IT CAN BURN YOU AND CAUSE SEVERE INJURY.**



into an State drains,

5. After oil is completely drained, replace oil drain plug and tighten with appropriate tools. Replace oil with the proper oil for your product. Refer to the Pre- Operating Instruction: Generator Setup section for exact fill requirements. Always use your dipstick to check the oil level and only fill to the full mark on the dipstick. Never overfill the engine as this can cause damage to the unit and void warranty.
6. Replace the dipstick/oil cap on the engine.
7. Replace Right Access Cover.
8. Shake generator to ensure the float in the Oil Alert System is free.

**PROPER MAINTENANCE OF THE UNIT WILL INCREASE THE LIFE OF YOUR PRODUCT. THE OIL MUST BE CHANGED ON A REGULAR BASIS FOR PROPER OPERATION, AND RELIABILITY AND TO ALSO MAINTAIN THE WARRANTY ON THIS PRODUCT.**



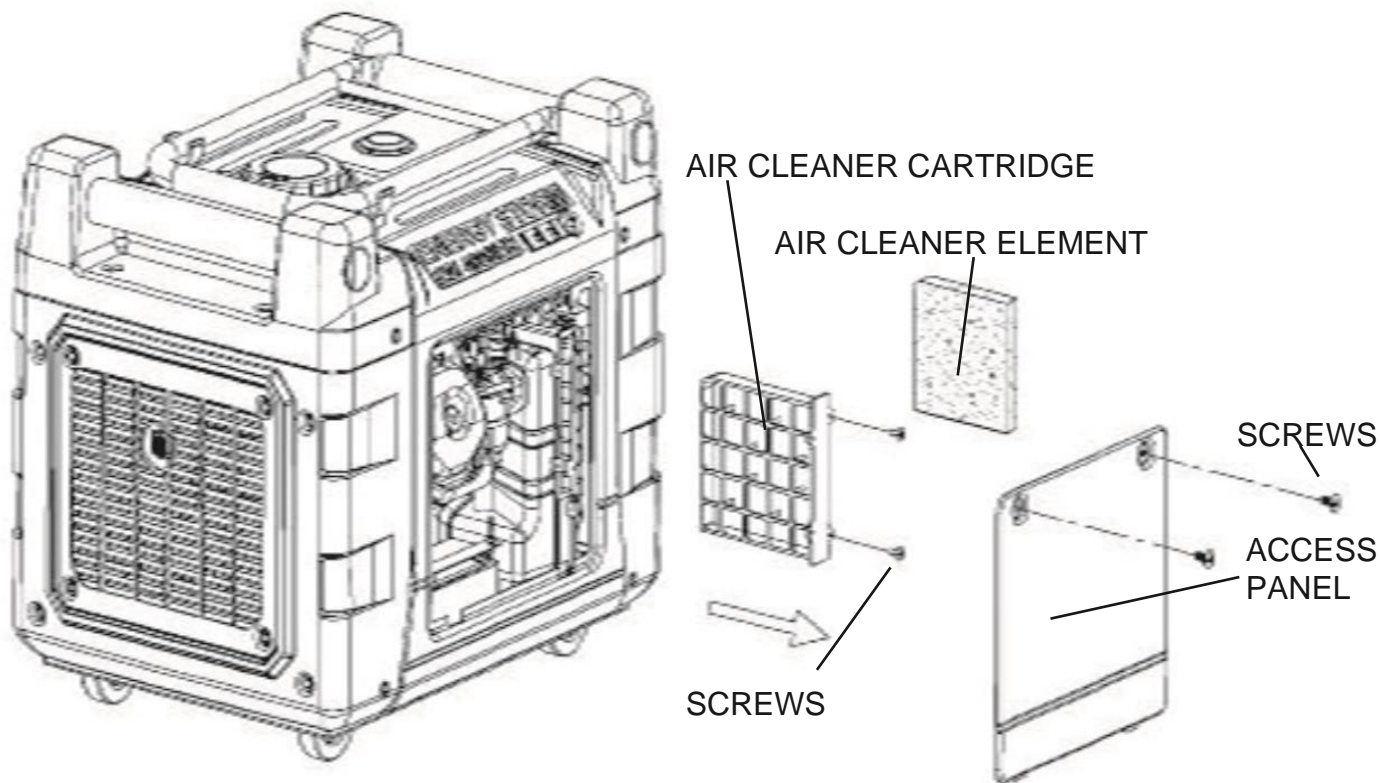
# LIFAN POWER USA

## MAINTENANCE

### AIR CLEANER MAINTENANCE:

Refer to Controls and Features section for diagram.

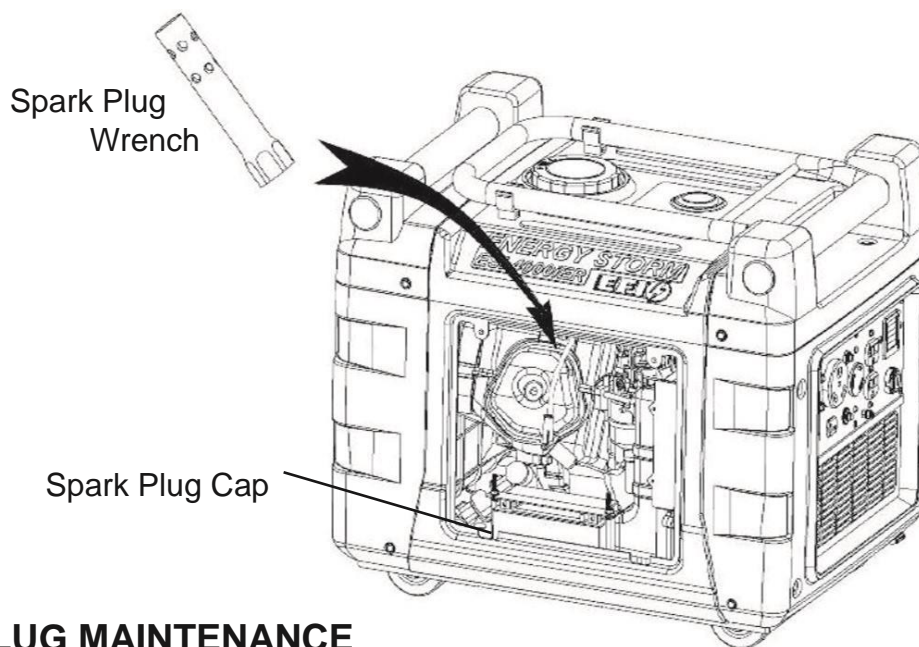
1. Remove Left Access Cover.
2. Remove the Air Cover Case.
3. Pull out the Air Cleaner cartridge following the direction of the arrow.
4. Check the Air Cleaner Element for cleanliness. If needed clean/replace Air Cleaner Element.
5. Reinstall Air Cleaner Element and Cartridge.
6. Reinstall Air Cover Case.
7. Reinstall the Left Access Cover.







## MAINTENANCE



### SPARK PLUG MAINTENANCE

#### Recommended spark plug: F7RTC

To ensure proper engine operation, the spark plug must be properly gapped and free of deposits.

1. Loosen the cover screws and remove the maintenance door.
2. Remove the spark plug cap.
3. Clean any dirt from around the spark plug base.
4. Use the supplied wrench to remove the spark plug.
5. Visually inspect the spark plug. Discard it if the insulator is cracked or chipped.
6. Clean the spark plug with a wire brush if it is to be reused.
7. Measure the plug gap with a feeler gauge. The gap should be 0.028-0.031in (0.7-0.8mm).
8. Correct as necessary by carefully bending the side electrode.

#### FUEL SYSTEM MAINTENANCE:

Refer to Controls and Features section for diagram. NOTE: Periodically you can get sediment or trash in your Carburetor Bowl. Use the following procedures to clean:

1. Turn the fuel valve to the "OFF" Position.
2. Remove the Left Access Panel.
3. Remove the carburetor bowl by removing the mounting bolt located at the bottom of the bowl.4. Dump out the old fuel and sediment into an approved container and clean carburetor bowl thoroughly.
5. Fit a new rubber washer into place and re-attach fuel bowl to the carburetor.

**NOTE: Removal of the drain screw at the bottom of the bowl can drain the fuel to remove smaller debris that has collected in the bowl.**

6. After bowl is securely back in place, turn the fuel Valve to the "ON" position for use.



# LIFAN POWER USA

7. Units equipped with a pre-filter for fuel will have a filter housed just below the fuel cock. Remove the fuel filter element (refer to “Fuel Filter Element Removal”



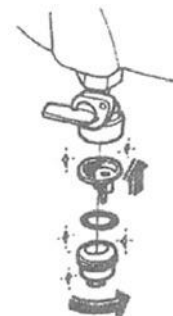
Fuel Filter  
Element Removal

## MAINTENANCE

**If the generator has been running, the Fuel Filter muffler will be very hot.**

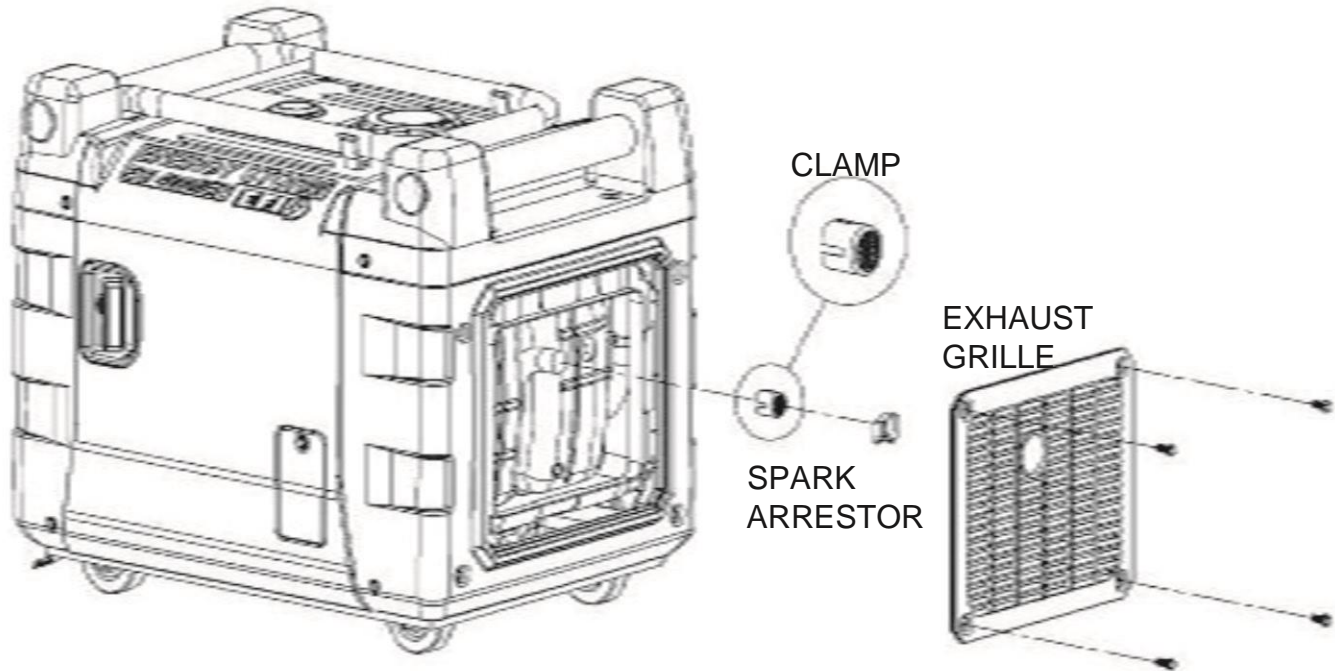
**Allow it to cool before proceeding.**

Element Assembly



### Spark Arrestor Maintenance

- The spark arrester must be serviced every 100 hours to maintain its efficiency, or a decrease in Horsepower may occur.
- Because of the size of the spark arrester opening in the exhaust grille you may decide that you do not want to take off the grille. This will not cause an issue unless you drop the arrester or the clamp or screws behind the grille. Taking the grille off or leaving it on is a matter of your convenience, but the procedure below will include removing the grille.
  1. Remove the exhaust grille to access the spark arrester.
  2. Remove the screws holding the clamp and the spark arrester to the muffler.
  3. Clean the spark arrester with a stiff wire brush.
  4. Replace if the wire mesh is perforated or torn.
  5. Reinstall the spark arrester and the clamp.
  6. Reinstall the exhaust grille.



## TRANSPORTING THE GENERATOR

To prevent fuel spillage when transporting or during temporary storage, the generator should be secured upright in its normal operating position with the ignition switch "OFF" and turn the fuel cap vent to off position.



When transporting the generator:

- Do not operate the generator while it is on or in a vehicle.
- If you must transport the generator in an enclosed vehicle, drain all fuel from the generator. **WARNING**

During short term storage, the generator should be secured upright in its normal operating position with the on/off switch turned "OFF".

Avoid placing the generator in direct sunlight when storing.

**If the generator is left in an enclosed area or vehicle, high temperatures inside could cause residual fuel to vaporize resulting in possible explosion.**





# LIFAN POWER USA

## LONG-TERM STORAGE OF THE GENERATOR

During long term storage, the generator should be secured upright in its normal operating position with the switch turned "OFF".

Avoid placing the generator in direct sunlight when storing.

- If the generator is left in an enclosed area or vehicle, high temperatures inside could cause residual fuel to vaporize resulting in possible explosion.
- Gasoline is extremely flammable and explosive under certain conditions.



- Do not smoke or allow flames or sparks in the area. **WARNING**
- During long-term storage, or infrequent use of your equipment, it is important to add a fuel stabilizer, such as STA-BIL® Fuel Stabilizer, to help prevent fuel oxidation (breakdown) and the formation of gum and varnish, and to inhibit corrosion in the fuel system.

## LONG-TERM STORAGE OF THE GENERATOR

1. Be sure the storage area is free of excessive humidity and dust, and out of direct sunlight.
2. It is best to keep the tank at least 95% full, as condensation will be less likely to occur in the fuel tank during storage if the tank is full. Do not overfill the tank, as the fuel will need room to expand on hot days. Add an appropriate amount of fuel stabilizer (per the instructions on the bottle) and run the generator for 5 minutes to ensure that any fuel trapped in the system has the stabilizer in it. You may also opt to add the fuel stabilizer and run the unit until it is out of fuel.

**If you opt to drain the fuel, then continue on with the instructions below.**

3. To drain the gasoline from the fuel tank, turn the ignition switch to the "OFF" position.
4. Siphon the fuel from the tank.
5. Change the engine oil.
6. Remove the spark plug and pour about a tablespoon of clean engine oil into the cylinder.
7. Crank the engine several revolutions to distribute the oil and then reinstall the spark plug.



# LIFAN POWER USA

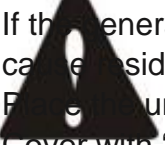
8. Turn the remote switch to the "OFF" position to prevent unwanted, unintentional cranking and excessive battery drain.
9. Once a month, recharge the battery.

## SHORT-TERM STORAGE

**For Short Term storage of your power equipment product, typically 30 days or more, perform the following:**

During short term storage, the generator should be secured upright in its normal operating position with the switch turned "OFF".

Avoid placing the generator in direct sunlight when storing.

-  If the generator is left in an enclosed area or vehicle, high temperatures inside could cause residual fuel to vaporize resulting in possible explosion.
- Place the unit in a clean, dry, and secure location.
- Cover with "LIFAN Water Proof Generator Cover," Item Number LF100-69600 not included) or canvas/vinyl tarpaulin. Do NOT operate unit with cover installed. **WARNING**

## EXERCISING THE GENERATOR

It is essential that the generator be exercised on a regular basis. This will prevent the accumulation of varnish or sludge in the fuel system; remove moisture from the generator windings and help keep the battery properly charged. Additionally, the engine seals and moving components will be lubricated. Exercise the generator by running it with at least a 1/2 load (1800W) for 15 minutes per month. Gasoline fuel treatments (such as STA-BIL®) to prevent contamination of your fuel supply are available from your dealer.



**NOTE:** Fuel varnishing necessitating replacement of the fuel injector is not

a warrantable failure. **TROUBLESHOOTING**

**IF THE ENGINE WILL NOT START:**

1. Check to ensure switches are in the "ON" position.
2. Check engine oil level. Your unit possesses a Low Oil Alarm System that will not allow your engine to start if the oil is below safe operating levels. This feature is installed to increase the life of your engine and prevent engine damage. If oil level is low, fill to the full mark on dipstick. Refer to the Product Specifications for exact oil type and amounts.

# LIFAN POWER USA

3. Add fuel stabilizer. Turn fuel shut-off valve to “off” position, run unit until fuel in fuel lines and carburetor has burned out of system.
4. Check the fuel level to insure adequate fuel. Add fuel if necessary.
5. Remove and inspect the spark plug for cleanliness and proper electrode gap. If needed, clean or replace the spark plug. Refer to Spark Plug Maintenance in the Maintenance section of the Owner’s Manual for proper procedure.

NOTE: Periodically on the initial start-up or after the unit has been stored for a long period of time, the float for the “Low Oil Alarm System” will stick to the bottom of your oil pan. Locate the two (2) wires to the Low Oil Sensor Diode (refer to figure on the right) located on the side of the engine block. Unplug these wires and, only after ensuring the engine is full of oil, start the engine and allow to run until warm (normally 20 minutes, as this will heat the oil and release the float on the Low Oil Alert System). Then re-plug the wires to the terminals on the Low Oil Alarm Sending Unit.



## **UNIT DOES NOT PROVIDE ELECTRICAL CURRENT:**

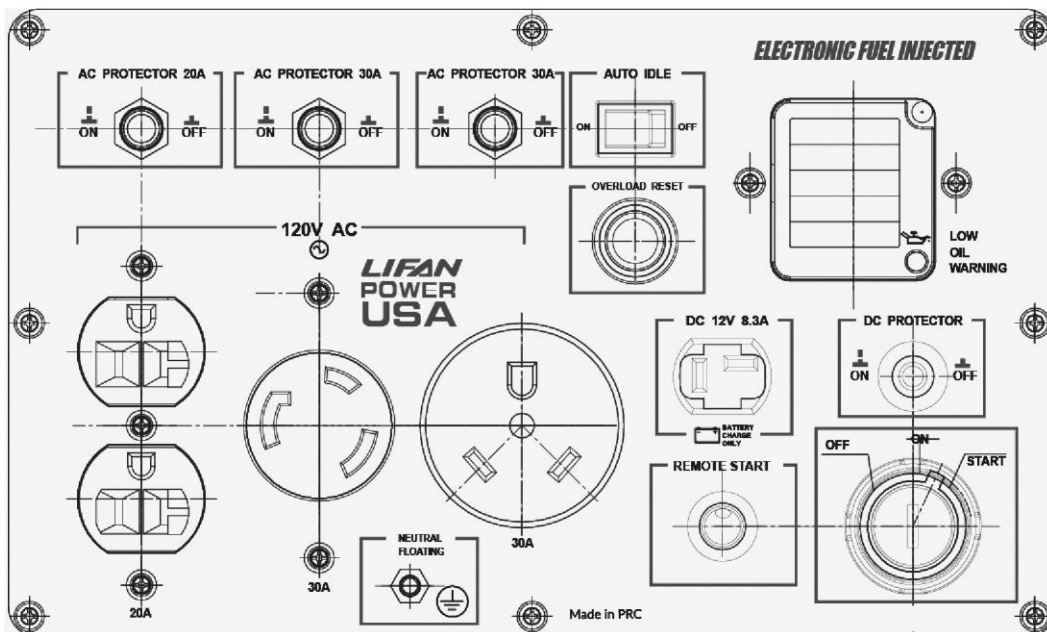
1. Plug in a small appliance or tool to test.
2. Check if the AC (or DC) Circuit Breaker is in the “ON” position. If not, place in “ON” position.
3. If your unit still does NOT produce electricity after performing the previous checks, call LIFAN Power USA at 1-866-471-7464, your dealer, or authorized Service Center.





# LIFAN POWER USA

## AC APPLICATION



The control panel has three AC breakers: Two (2) 20 A breakers for the 5-20R split duplex receptacle, and one (1) 30 A breaker for the L5-30R twist-lock receptacle. The 20A breakers each protect one of the circuits in the 5-20R split duplex receptacle; the left 20A breaker protects the top receptacle, and the right 20A breaker protects the bottom receptacle.

Ensure that the breaker is on for the receptacle you want to use.

1. Start the engine.
2. Make sure the digital display is illuminated and returning data.
3. Confirm that the appliance to be used is switched off before plugging into the control panel.

## 4. Plug the appliance into the control panel. **LOW OIL ALARM SYSTEM**

The low oil alarm system is designed to prevent engine damage caused by an insufficient amount of oil in the crankcase. Before the oil level in the crankcase falls below a safe limit, the low oil alarm system will automatically shut down the engine (the ignition switch will remain in the "ON" position).

If the low oil sensor shuts down the engine, the low oil light (red) will come on when you operate the starter, and the engine will not run. If this occurs, add enough of the approved engine oil to raise the level to the top line on the dipstick.



# LIFAN POWER USA

## POWERING 12V DC DEVICES

This generator can be used to power 12V DC devices through the DC receptacle on the control panel while the generator is running. The DC output comes directly from the battery, so powering a DC device places a load on the battery. The DC device should require no more than 12V or draw more than 10A (which is the size of the DC breaker). The voltage regulator recharging the internal battery is designed for a maximum charge amperage of 11-12A, so as long as the generator is running the internal battery should not be drained.



• The generator does not have to be running to power a DC device, but if the generator is not running the battery will be drained, and you may have to recharge the battery. If you can start the generator again.

### NOTE Back-charging the generator battery

This generator battery can be back-charged through the DC receptacle by the included battery trickle charger). The generator does not have to be running to back-charge the battery, and there are no special considerations for switches to be on or off for battery to charge, though if the generator is running, the remote switch should be in the "OFF" position.

• The ECU and fuel pump require the battery to retain some charge, or generator can't be started. If generator may be necessary to charge the battery before the generator



### NOTE

- Connect the polarized connector of the battery charger to the DC receptacle.
- Charge the battery for 3 hours. If you are using the included Plug-In Trickle Charger, charge the battery until the status indicator goes from red to green.



not  
the  
not  
the  
be



## **JUMP-STARTING THE GENERATOR**

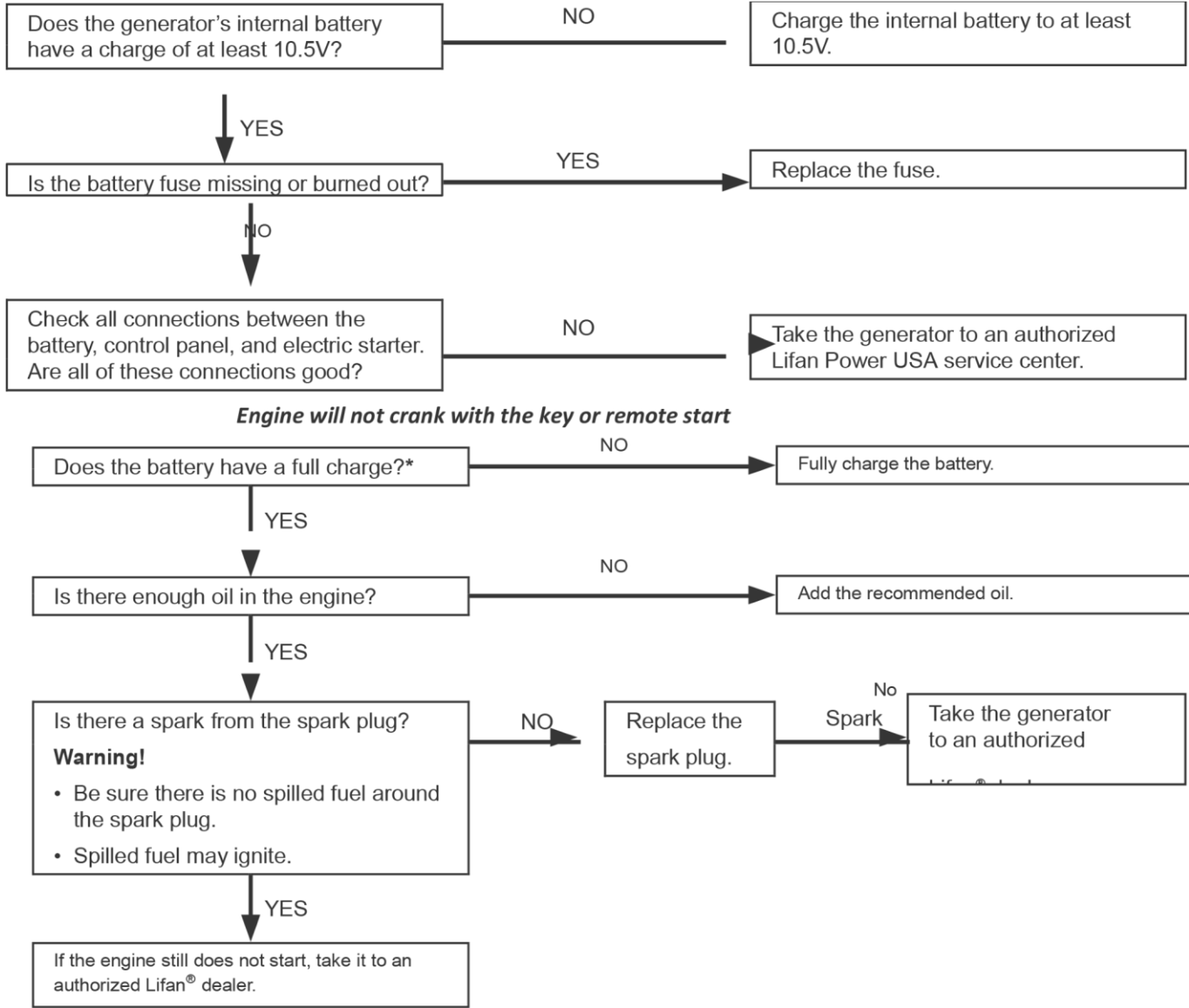
This generator was not designed to be jump-started through the DC receptacle and it is not recommended to do so. If you connect an external battery to the DC receptacle before the generator is started and attempt to start the generator with the key fob or the ignition switch, a jump-start may occur, but it will likely trip the DC breaker. It is recommended to connect external batteries to the DC receptacle using the procedure given in Charging External Batteries. If however, you do trip the DC breaker, press the breaker reset button located next to the DC receptacle on the control panel.





# LIFAN POWER USA

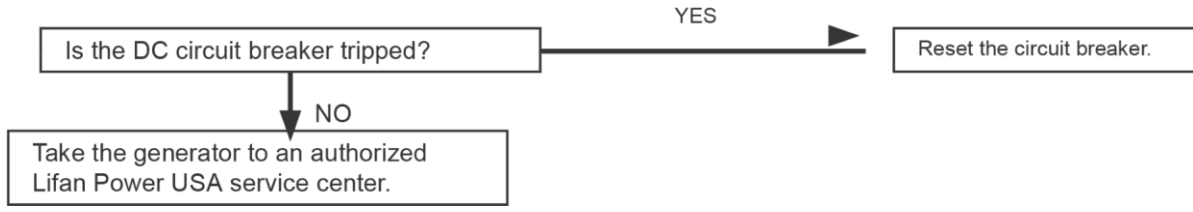
## ENGINE WILL NOT START





# LIFAN POWER USA

## NO OUTPUT AT THE DC RECEPTACLE



## DIGITAL DISPLAY

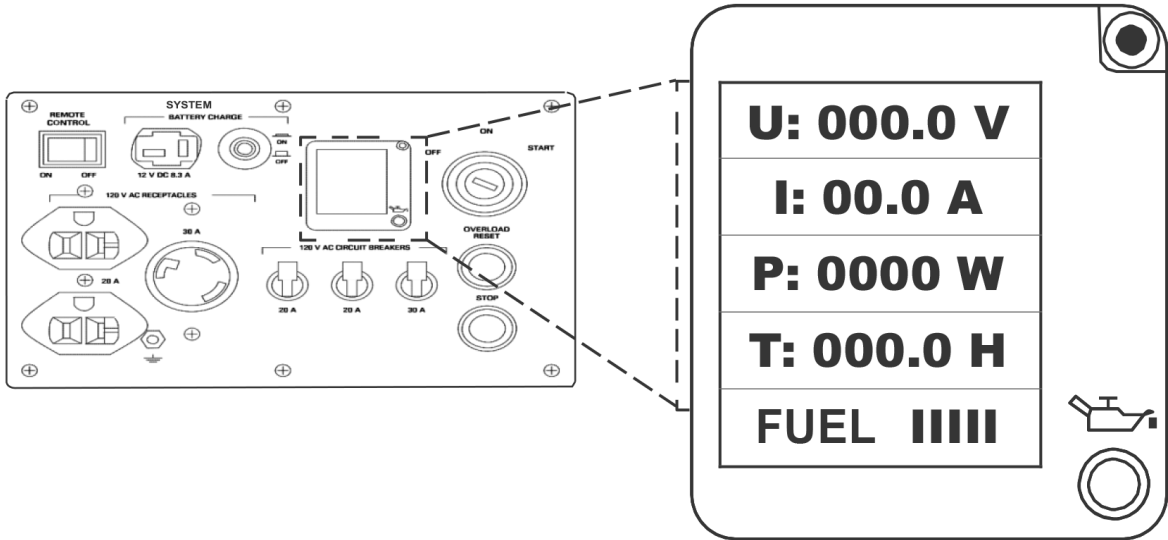
This generator is equipped with an LCD digital display that provides continuously-updated status information for the following parameters:

- (U) Voltage—Current voltage supplied
- (I) Amperage for the generator output
- (P) Wattage (power) output for the generator
- (T) Run time—Total generator run time since first start (in hours)
- (FUEL) Fuel level (bar reading)

It is normal for the run time indicator to have 1-2 hours on the meter from the factory for testing and quality assurance inspections.

Within a few seconds of illumination, the display will begin to show new data, and after the generator is ready to supply power.

### NOTE





# LIFAN POWER USA

## ERROR - FAULT CODES DIGITAL READ-OUT

The low oil alarm system is designed to prevent engine damage caused by an insufficient amount of oil in the crankcase. Before the oil level in the crankcase falls below a safe limit, the low oil alarm system will automatically shut down the engine (the ignition switch will remain in the "ON" position).

PARTS	ERROR CODE	FAULT DESCRIPTION	SOLUTION TO ISSUE
Injector	<b>P0261</b>	No voltage to injector	Replace fuel injector or wiring harness
	<b>P0262</b>	Check connection to injector	Replace fuel injector or wiring harness to injector
Manifold Air Pressure Sensor	<b>P0107</b>	Short circuit	Replace MAP sensor
	<b>P0108</b>	Signal line break	Replace MAP sensor
Oxygen Sensor	<b>P0130</b>	Signal line break	Replace oxygen sensor
	<b>P0131</b>	Short circuit	Replace oxygen sensor
	<b>P0132</b>	Short circuit	Replace oxygen sensor
Fuel Pump Relay	<b>P0230</b>	Relay shorted	Replace fuel pump relay or fuel pump
Temperature Sensor	<b>P0117</b>	Short circuit	Replace temperature sensor
	<b>P0118</b>	Signal line break	Replace temperature sensor
Step Motor	<b>P0505</b>	Signal line break	Replace step motor



44



# LIFAN POWER USA

## WATTAGE CHART

	RUNNING WATTAGE REQUIREMENTS	ADDITIONAL STARTING WATTAGE REQUIREMENTS
	300	500
	500	750
	600	1000
	700	1400
	875	2350
	1500	2200
	2500	3300
	3800	4950
	5000	6500
	6000	6700
		SUB-TOTAL:
	600	2200
	700	1400
	1450	1400
	700	1800
	5750	1800
	750	800



# LIFAN POWER USA

## WATTAGE CHART

750	2300
850	0
1100	0
1650	0
1500	0
1500	0
2100	0
	SUB-TOTAL:
Actual:	
50	0
65	0
100	0
100	0
300	0
400	0
400	0
550	1100
725	1400
750	1400
1000	2100
800	1300
1050	2150
800	0
1100	0



# LIFAN POWER USA

## WATTAGE CHART

		SUB-TOTAL:
	300	300
	500	500
	1000	1000
	1000	1000
	1200	1200
	1200	1200
	1560	3100
	1800	3600
	1500	3000
	2000	4000
	2000	4000
		SUB-TOTAL:

## CONVERTING AMPS OR HORSEPOWER INTO WATTS

If necessary, use these formulas:

**Watts = Amps x Volts**

**Running Watts\* = Horsepower x 932\*\* (for motors)**

Remember, this worksheet lists **average power requirements** a particular manufacturer's device may use more or less than the listed wattage.

- Add a 10% correction factor to your totals to help overcome this uncertainty.  
If your customer plans to operate devices that use electric motors, list both the starting and running requirements of each.
- Starting requirements of some devices maybe significantly higher than their running requirements. This higher demand must be considered when estimating your power needs. Some small,



universal motors — which do not draw a heavy starting load (drills, small saws, blenders, etc.) — require very little extra current for starting.

When listing items that use motors, take them in the order of highest-to-lowest starting requirements, as shown in the example below. Motor A, for instance, has a starting requirement of 2,600 watts, so it's listed first, followed by Motor B at 1,300 watts, and Motor C at 1,000 watts.

MOTOR/ DEVICE	STARTING WATTS	RUNNING WATTS
Motor A	2,600	850
Motor B	1,300	600
Motor C	1,000	750

## NO ELECTRIC MOTORS

If your list does not include any devices that use electric motors, simply add the power (running) requirements of all the items on your list to obtain the maximum power needed.

For example, if you intend to use only an electric skillet, a 100-watt light and a heating pad (as shown below), the maximum power requirement would be 1,655 watts. In this case, a generator like the EF2600, that can produce 2,300 watts rated output, is recommended.

# LIMITED WARRANTY POLICY

This warranty is limited to the following Lifan Power and Storm Series products that are distributed by the EquipSource LLC, d/b/a LIFAN POWER USA, located at 2205 Industrial Park Road, Van Buren, AR 72956.

Effective date is 4/20/2010.

## LENGTH OF WARRANTY

PRODUCTS COVERED	Residential Use**			Commercial/Rental**
	1st Year	2nd Year	3rd Year	Warranty not to exceed 300 hrs. or terms listed below.
Walk Behind Mowers	Full unit parts and labor	Full unit parts only	Engine: parts only	Full unit: 3 months parts and labor
Water Pumps	Full unit parts and labor	Full unit parts only	Engine: parts only	Full unit: 12 months parts and labor
Generators/Inverter Generators	Full unit parts and labor	Full unit parts only	Engine: parts only	Full unit: 12 months parts and labor
Pressure Washer Engines	Full unit parts and labor	Full unit parts only	Engine: parts only	Full unit: 12 months parts and labor
Pressure Washer Pumps*	Full unit parts and labor	NA	NA	Full unit: 12 months parts and labor



# LIFAN POWER USA

Gasoline Engines	Full unit parts and labor	Full unit parts only	Engine: parts only	Full unit: 12 months parts and labor
Gasoline Powered Welders	Full unit parts and labor	Full unit parts only	Engine: parts only	Full unit: 6 months parts and labor

\*All Lifan Pressure Pro™ and Storm Series Pressure Storm™ pressure washers are equipped with Annovi Reverberi™ high pressure water pumps which are covered by the manufacturer's 1 year limited warranty.

Go to [www.lifanpowerusa.com](http://www.lifanpowerusa.com) for details.

\*\* Residential Use is defined as items that are for personal use.

\*\*\* Commercial/Rental use is defined as any usage for income producing or other business related uses.

In order to qualify for the limited warranty the product(s) must be purchased in North America from an authorized EquipSource, LLF d/b/a Lifan Power USA dealer or a dealer authorized by EquipSource to sell Lifan products. This warranty is non-transferable and applies only to the original purchaser. The supplied "Warranty Registration Card" must be completed and on file with American Warranty Service (at the supplied address), at the time that any warranty claim is made. The "Warranty Registration Card" must be submitted with a receipt of purchase which clearly states the date of purchase and where the purchase was made.

During the warranty period (stated above) EquipSource, LLC and/or American Warranty Service will repair or replace, at its' option, any part that is proven to be defective in material or workmanship under normal usage. Repairs and/or replacement will be made without charge for parts or labor. All parts found to be defective must be returned to EquipSource or American Warranty Service at our direction. Upon reception of the parts a judgment as to the validity of the warranty claim will be determined. All parts replaced under warranty or any replacement of the complete unit will be considered part of the original product and replacement of any product, and any warranty on those parts or replacement unit will coincide with the original warranty.

To obtain Warranty Service, call our Customer Service Hotline at 1-866-471-7464 and press 2 for Warranty Service at which time you will be transferred to the technicians at American Warranty Service. In lieu of this you may call directly to American Warranty Service at 866-926-4313 to be directly connected to a repair specialist. If your issue cannot be resolved through consultation with our customer service representatives, you will be directed to an Independent Service Center of your choice nearest your location. Any manufacture's Defects of your product will be repaired or replaced at no charge to you per our commitment. If the issue with your unit is not a Manufacture's Defect, you will be advised to make payment to the Service Center upon diagnosis of repairs which are not covered under the Manufacturer's Warranty Policy. In this case the end user is responsible for all shipping and handling charges associated with the exchange and as stated above the warranty will coincide with the date of the original purchased unit.

## LIMITED WARRANTY POLICY

This warranty is not valid for products or parts affected or damaged by accident, collision, normal wear, fuel contamination, abuse, neglect, misuse, alteration and/or unsuitable use or unauthorized parts replacement. Mower decks and blades are specifically not warranted for impact or abrasive damage. Warranty becomes void if the customer fails to install, maintain, and/or operate the product in accordance with the instructions and recommended actions of Lifan set forth in the owner's manual. EquipSource, LLC disclaims any responsibility for time loss or loss of usage of the product, transportation, commercial loss, or any other incidental or consequential damage. Prior to any warranty service an approval code must be issued to the service center in order for the warranty claim to be valid. Any implied warranties are limited to the duration of this written limited warranty. This warranty gives you specific legal rights, and you may also have other rights, which may vary from state to state.

### OWNER'S RESPONSIBILITY

To ensure trouble free warranty coverage it is important that you register your Lifan generator by phone at 1-866-471-7464, or by filling out and returning to Lifan Power USA the warranty registration card supplied with your generator.

### REGISTERING YOUR PRODUCT

This confirms your warranty coverage and provides a direct link between you and Lifan Power USA if we find it necessary to contact you. Your receipt for purchase including date, model and serial number must be maintained and registered to receive

service from an Authorized Service Dealer for warranty service. Proof of purchase rests solely with you, the original purchaser. You must demonstrate reasonable care and use, and follow preventive maintenance, storage, fuel and oil usage as prescribed in the operator's manual for your Lifan Power unit. For the warranty assistance from a Lifan Authorized Service Dealer nearest to you, call Lifan's automated phone at 1-866-471-4764 Option 2. Should you require assistance or have questions concerning Lifan Power USA Warranty Statement, you can contact us through the web at [www.lifanpowerusa.com](http://www.lifanpowerusa.com) or call toll free 1-866-471-7464.

## EXCLUSIONS

- Lifan Power Equipment that utilize non-Lifan replacement parts.
- Failure to perform "Periodic Maintenance" as required and specified in the supplied "Owner's Manual."
- Costs of normal maintenance and adjustments.
- Failures caused by any contaminated fuels, oils, or lack of proper oil levels.
- Repairs or diagnostics performed by individuals other than Lifan authorized dealers not authorized in writing by Lifan.
- Failures due to normal wear and tear, accident, misuse, abuse, negligence or improper use.
- As with all mechanical devices, the Lifan engines need periodic part(s) service and replacement to perform as designed. This warranty will not cover repair when normal use has exhausted the life of a part(s) or engine.
- Failures caused by any external cause or act of God, including but not limited to, collision, theft, vandalism, riot, war, fire, freezing, lightning, earth-quake, windstorm, hail, water, flood, tornado, or hurricane or any occurrence outside of normal use and activity.
- Damage related to any animal infestation to include rodent and/or insect infestation.
- Products that are modified or altered in a manner not authorized in writing by Lifan.
- Any incidental, consequential or indirect damages caused by defects in materials or workmanship, or any delay in repair or replacement of the defective part(s).
- Failure due to misapplication.
- Telephone, cellular phone, facsimile, internet access, or other communication expenses.
- Expenses related to "customer instruction" or troubleshooting where no manufacturing defect is found.
- Overnight freight or special shipping costs for replacement part(s).
- Overtime, holiday or emergency labor.
- Starting batteries, fuses, light bulbs and engine fluids.
- SPECIAL RESTRICTION ON ALL RESIDENTIAL GRADE EQUIPMENT: Any residential grade unit used in a commercial application falls under a 60-day limited warranty.

# LIMITED WARRANTY POLICY

## DISCLAIMER OF IMPLIED WARRANTIES

This limited warranty is in lieu of all other expressed or implied warranties, including any warranty of the unit's fitness for any particular use and any implied warranty of MERCHANTABILITY otherwise applicable to Lifan Power Equipment and its affiliated companies shall not be liable for any special, incidental or consequential damage, including lost profits. There are no warranties extended other than as provided herein. This limited warranty may be modified only by Lifan Power USA. Any implied warranties allowed by law shall be limited in duration to the terms of the express warranty provided herein. Some states do not allow limitations on how long an implied warranty lasts, so the above limitation may not apply to you. Some states do not allow the exclusion or limitation of incidental or consequential damages, so the above limitation may not apply to you. This warranty gives you specific legal rights. You also have other rights from state to state. Lifan's ONLY LIABILITY SHALL BE THE REPAIR OR REPLACEMENT AS STATED ABOVE. IN NO EVENT SHALL Lifan BE LIABLE FOR ANY INCIDENTAL OR CONSEQUENTIAL DAMAGES, EVEN IF SUCH DAMAGES ARE A DIRECT RESULT OF Lifan's NEGLIGENCE. Some states do not allow the exclusion or limitation of incidental or consequential damages, so the above limitation may not apply to you. This warranty gives you specific legal rights and you may also have other rights from state to state.





# LIFAN POWER USA

## **GOVERNING LAW/ CONSENT TO JURISDICTION AND FORUM SELECTION**

The laws of the State of Arkansas shall govern the rights and duties of the parties under this agreement and jurisdiction and venue is fixed in Crawford County, Arkansas. The buyer/owner hereby waives any right it may have to assert the doctrine of forum non conveniens or similar doctrine or to object to venue with respect to any proceeding brought in accordance with this paragraph, and stipulates that the State and Federal courts located in the County of Crawford, State of Arkansas shall have in person jurisdiction and venue over each of them for the purpose of litigating any dispute, controversy, or proceeding arising out of or related to the sale, manufacture or warranty of products with EquipSource, LLC.

## **OWNER'S WARRANTY RESPONSIBILITIES**

As the outdoor equipment owner, you are responsible for performance of the required maintenance listed in your owner's manual. EquipSource, LLC d/b/a Lifan Power USA recommends that you retain all receipts covering maintenance on your outdoor equipment. Lifan Power USA will not deny your warranty coverage based solely on your lack of receipts for service however, the condition of the equipment upon arrival at the service center will determine the warrantable nature of the product.

As the outdoor equipment owner, you should however be aware that Lifan Power USA may deny your warranty coverage if your outdoor equipment or a part has failed due to abuse, neglect, or improper maintenance or unapproved modifications.

If you have any questions regarding your warranty rights and responsibilities, you should contact Lifan Power USA or American Warranty Service Representative at 1-866-471-7464 Option 2 Warranty and Service or at the following address Lifan Power USA, 2205 Industrial Park Road, Van Buren, AR 72956 or by contacting us through [www.lifanpowerusa.com](http://www.lifanpowerusa.com).

**This warranty specifically excludes the use of any Lifan Power Equipment or Storm Series power equipment as the "Sole Source of Power" for "off the power grid applications" and this warranty will become null and void for units used for this purpose and manner. This warranty specifically excludes the use of any Lifan Power Equipment or Storm Series power equipment for the purpose of powering Life Support devices, Life Support appliances, Medical devices, and/or Medical appliances.**

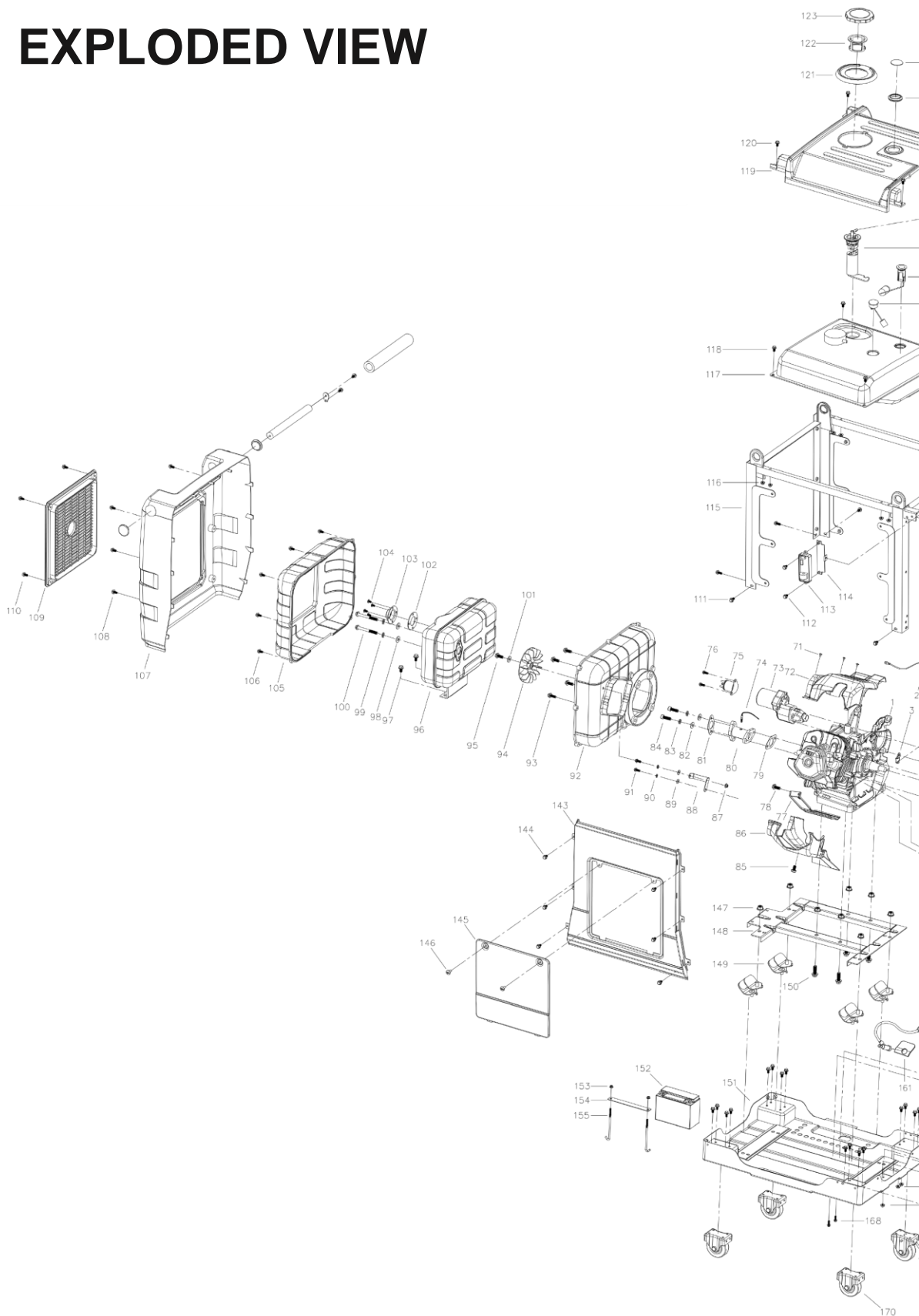
**EquipSource, LLC will not be held responsible for any damage due to the use of any Lifan or Storm Series power equipment for these purposes.**

# APPENDIX



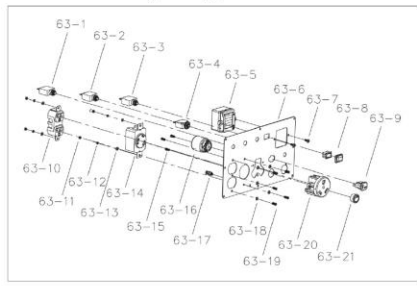
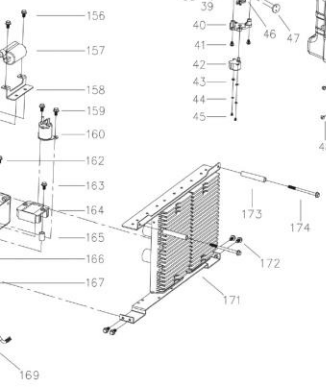
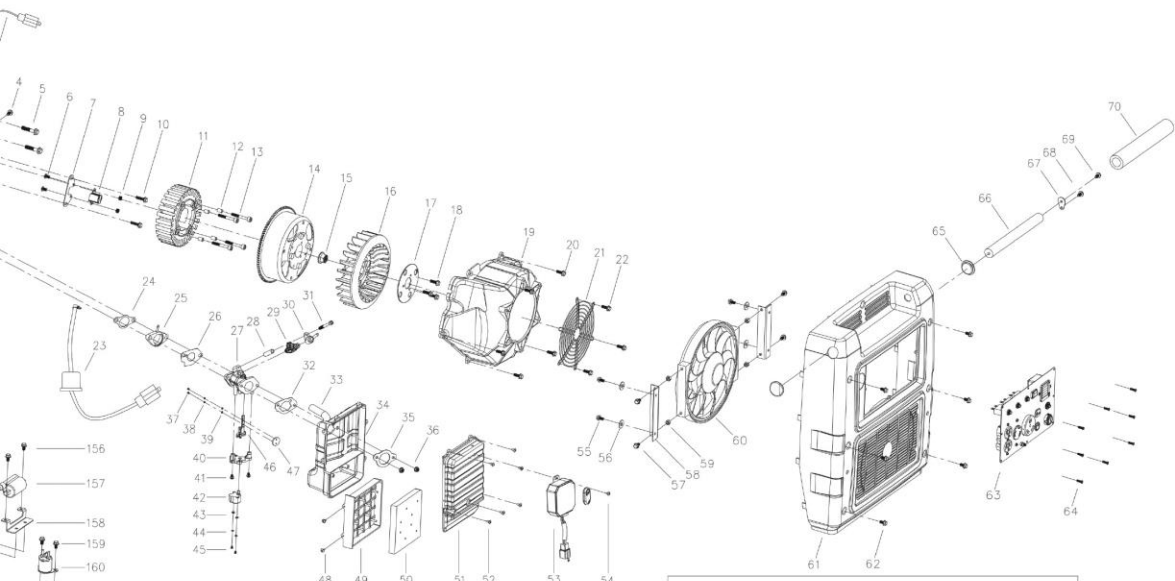
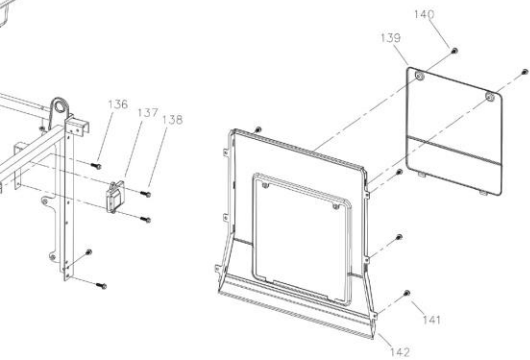
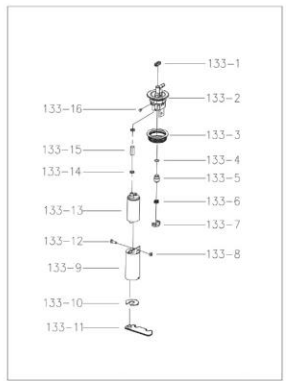
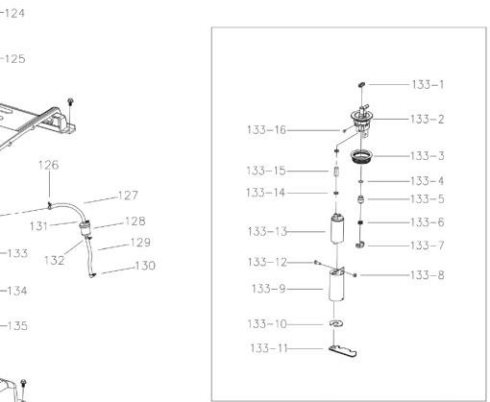
# LIFAN POWER USA

## EXPLODED VIEW





# LIFAN POWER USA







# LIFAN POWER USA



# LIFAN POWER USA

S/N	Part No.	Description	Qty
1	75071	188F Engine	1
2	011501006	Temperature sensor	1
3	09080104	Tension disc for stator	1
4	03050221	Bolt	1
5	03050229	Bolt	2
6	03050227	Screw	2
7	03050227	Ignition sensor mounting plate	1
8	03071421	Ignition sensor	1
9	03060212	Nut	2
10	03050222	Bolt	2
11	60074	Stator	1
12	03071205	Guide pin for stator	4
13	030502004	Bolt	4
14	61019	Flywheel	1
15	03060117	Nut	1
16	09080006	Fan for flywheel	1
17	091101005	Tension plate for fan	1
18	03050360	Screw	3
19	091101006	Engine fan cover	1
20	03050222	Bolt	5
21	091101007	Engine fan cover protector	1
22	03050221	Bolt	3
23	011502005	Pressure sensor	1
24	09080015	Intake Gasket	1
25	09080013	Rubber gasket	1
26	09080018	Intake Gasket	1
27	03071422	Fuel injector base	1
28	090703042	Bushing	1
29	09110650	Fuel injector	1
30	090705030	Inlet fuel pipe connector	1
31	03051036	Screw	1
32	09080021	Gasket	1
33	091101021	Breather tube	1
34	09080024	Air filter housing	1
35	09080026	Air filter gasket	1
36	03060133	Nut	2
37	03060133	Screw	2
38	03030110	Lock washer	2
39	03030111	Flat washer	2

S/N	Part No.	Description	Qty
40	09020160	Step motor base	1
41	03050821	Screw	2
42	091101010	Step motor	1
43	03030106	Flat washer	2
44	03030110	Lock washer	2
45	03050803	Screw	2
46	090105032	Throttle Valve support	1
47	090105031	Throttle valve	1
48	030503886	Screw	2
49	09080028	Air filter holder	1
50	09080025	Sponge type air filter	1
51	091101024	Air filter cover	1
52	030503886	Screw	6
53	09070420	Remote control receiving module	1
54	030512002	Screw	1
55	03050221	Bolt	4
56	03030143	Flat washer	4
57	03050221	Bolt	4
58	09120201	DC fan support bracket	2
59	03060133	Nut	4
60	09110233	DC fan	1
61	68214	Front case	1
62	03050222	Bolt	6
63	78009	Control panel	1
63-1	10010109	120v Circuit Protector(20A)	1
63-2	10010115	120v Circuit Protector(30A)	1
63-3	10010115	120v Circuit Protector(30A)	1
63-4	10010102	DC Protector	1
63-5	090801001	LCD Digital Display Gauge	1
63-6	093501001	Control panel frame	1
63-7	03050318	Screw	2
63-8	100301010	Switch	1
63-9	04050135	DC Receptacle	1
63-10	04130124	120v Duplex Receptacle	1
63-11	03060112	Nut	4
63-12	03030115	Lock washer	4



55  
65

**LIFAN POWER USA**





# LIFAN POWER USA

S/N	Part No.	Description	Qty
63-13	03030105	Flat washer	4
63-14	04130125	NEMA L-15 3prong twist	1
63-15	03050138	Screw	3
63-16	09080093	Engine switch	1
63-17	03051601	Grounding Rod Bolt	1
63-18	03030105	Flat washer	5
63-19	03050815	Screw	5
63-20	04130125	NEMA 30a RV Receptacle	1
63-21	10030101	Remote Control Activation Switch	1
64	030512002	Screw	8
65	09080058	End plug for handle	4
66	09110236	Handle	2
67	09080179	Tension disc of handle	4
68	03050224	Bolt	4
69	03050215	Bolt	4
70	09110222		2
71	030512002	Screw	3
72	68212	Upper fan cover	1
73	09150002	Starting motor	1
74	011502006	Oxygen sensor	1
75	09080098	Relay	1
76	03050298-1	Bolt	2
77	1202004	Air guide plate	1
78	03050221	Bolt	1
79	08070105	Muffler gasket	1
80	093501002	Exhaust manifold	1
81	09150102	Muffler gasket	1
82	03030135	Flat washer	2
83	03030224	Lock washer	2
84	03050389	Screw	2
85	03050221	Bolt	1
86	68213	Lower fan cover	1
87	03060133	Nut	1
88	09110615	Muffler cover connect plate	1
89	03030124	Flat washer	2
90	03030228	Lock washer	2
91	03050222	Bolt	2
92	6868683	Muffler cover	1
93	03050357	Screw	4

S/N	Part No.	Description	Qty
94	68218	Exhaust fan	1
95	03050142	Bolt	1
96	09110206	Muffler	1
97	03050140	Bolt	2
98	03030143	Flat washer	2
99	03030222	Lock washer	2
100	030514021	Bolt	2
101	03030135	Flat washer	1
102	091101016	Spark arrestor gasket	1
103	091101015	Spark arrestor	1
104	03050221	Bolt	3
105	6868684	Muffler cover	1
106	030503880	Screw	7
107	68215	Back case	1
108	03050222	Bolt	6
109	68189	Air outlet cover	1
110	03050221	Bolt	4
111	03050221	Bolt	8
112	03050209	Bolt	2
113	090705002	mutual-inductor module	1
114		mutual-inductor module support	1
115	09110305	Support	1
116	03060133	Nut	8
117	09110557	Fuel tank	1
118	03050215	Bolt	4
119	68216	Top cover	1
120	030502993	Bolt	4
121	091101017	Spill Guard Fuel Filler	1
122	09080136	Fuel filter strainer basket	1
123	09110242	Fuel cap	1
124	09080060	Fuel level display cover	1
125	09080059	Gasket Fuel Gauge	1
126	03060114	Fuel Line Clamp	1
127		Fuel Line	1
128	09010162	Fuel filter cannister	1
		Fuel Filter Cartridge	
129	090705013	Fuel Line	1
130	03060114	Hose Clamp	1
131	03060114	Hose Clamp	1



67

# LIFAN POWER USA



# LIFAN POWER USA

S/N	Part No.	Description	Qty
132	03060114	Hose Clamp	1
133	093501006	Fuel pump assembly	1
133-1	09070223		1
133-2	090705010		1
133-3	090705012		1
133-4	09110269		1
133-5	090705013		1
133-6	090705014		1
133-7	090705015		1
133-8	03060112		1
133-9	090705010		1
133-10	090705016		1
133-11	090705017		1
133-12	03050185		1
133-13	0907050011		1
133-14	09110269		2
133-15	090705013		1
133-16	090705018		1
134	093501003	Fuel Gauge	1
135	093501004	Fuel level display	1
136	03050221	Bolt	1
137	092101028	ECU	1
138	03050360	Screw	2
139	091101020	Access cover	1
140	03050907	Screw	2
141	03050221	Bolt	6
142	09110262	Side cover	1
143	09110262	Side cover	1
144	03050221	Bolt	6
145	09110610	Access cover	1
146	09110604	Screw	2
147	03060154	Nut	4
148	09110604	Engine support	1
149	09110208	Engine Isolators	4
150	03050294	Bolt	4
151	09110306	Generator chassis	1
152	09110216	Battery	1

S/N	Part No.	Description	Qty
153	03060207	Nut	2
154	09080144	Battery Hold Down Bracket	1
155	03050913	Battery fixed bolt	2
156	03050209	Bolt	2
157	08011901	Ignition coil	1
158	09080019	Ignition coil support	1
159	03050209	Bolt	2
160	09080098	Relay	1
161	04170303	Ignition coil insulator	1
162	03050221	Bolt	16
163	03050311	Screw	1
164	093501005	Voltage regulator	1
165	03070136	Spacer bushing of voltage regulator	1
166	03060207	Nut	2
167	03060133	Nut	1
168	03050207	Bolt	2
169	09110623	Wheels with brake	1
170	09110247	wheels	3
171	7171040	Inverter board	1
172	03050221	Bolt	4
173	03071413	Inverter spacer	2
174	030502020	Bolt	2







# LIFAN POWER USA

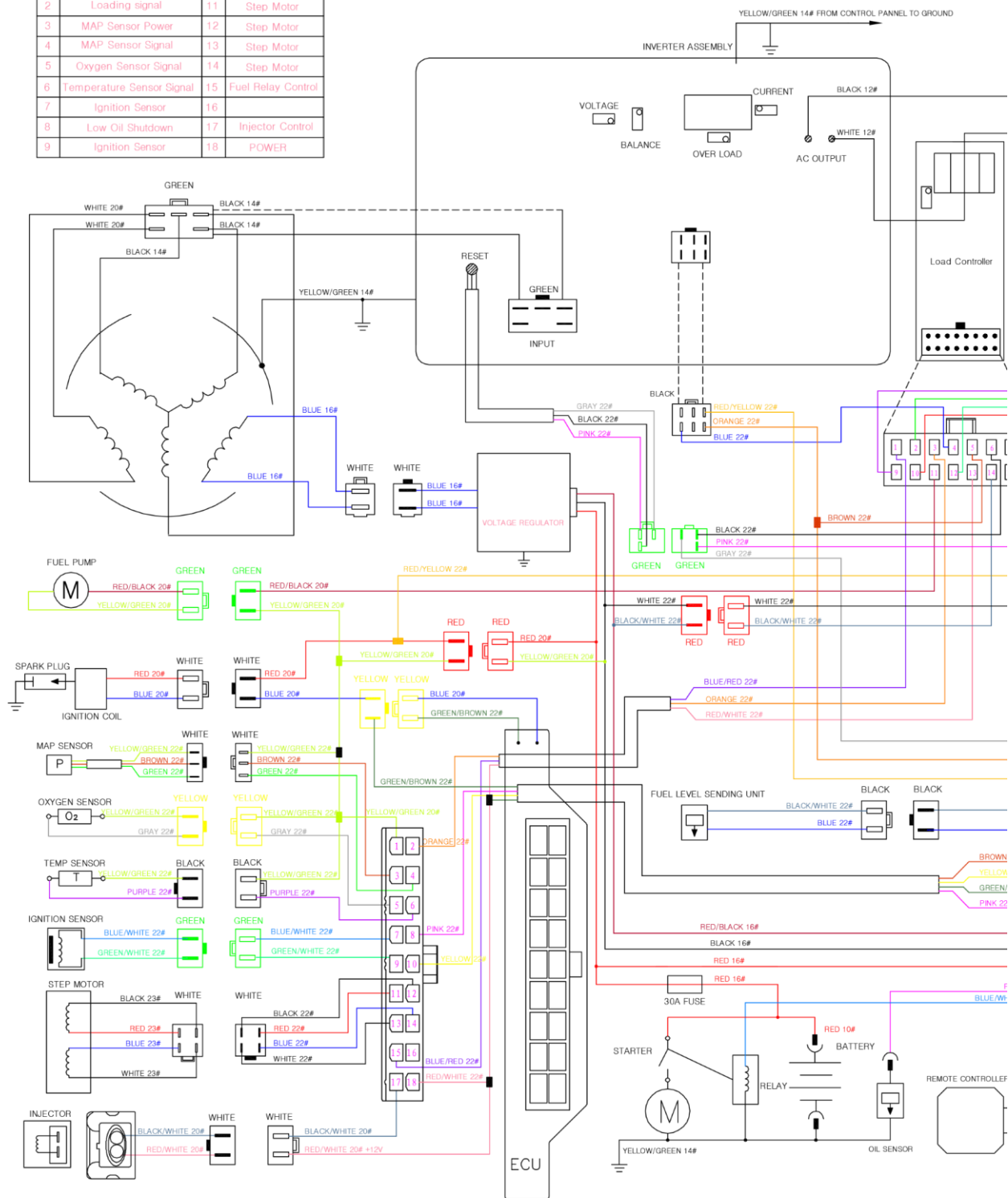
---

---

## ESI 7000 WIRING D

ECU connectors function

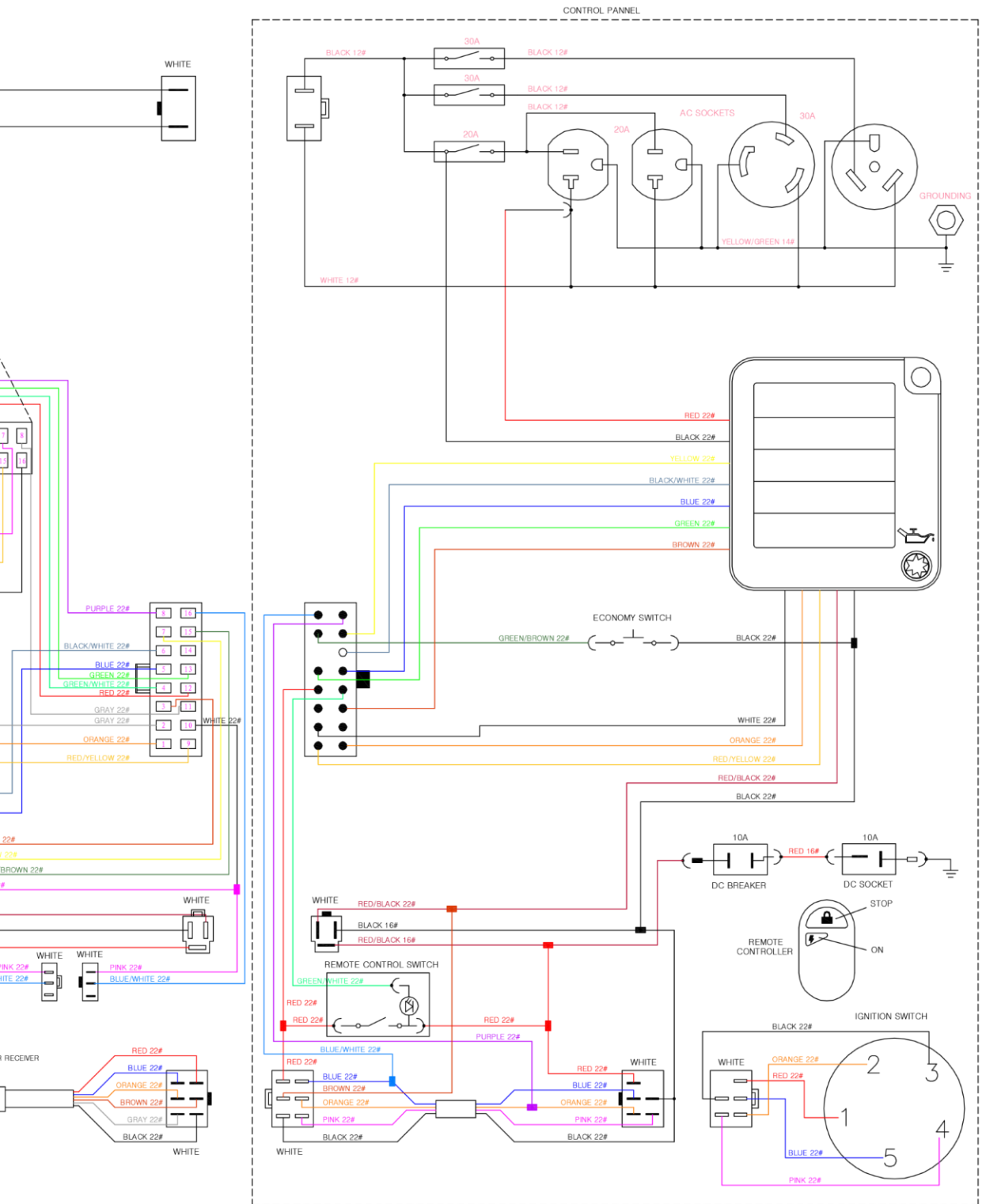
NO.	Function	NO.	Function
1	Ground	10	Fault Signal
2	Loading signal	11	Step Motor
3	MAP Sensor Power	12	Step Motor
4	MAP Sensor Signal	13	Step Motor
5	Oxygen Sensor Signal	14	Step Motor
6	Temperature Sensor Signal	15	Fuel Relay Control
7	Ignition Sensor	16	Injector Control
8	Low Oil Shutdown	17	Injector Control
9	Ignition Sensor	18	POWER







## OILER-EFI DIAGRAM





# Lifan Power USA is proud to offer its extensive line of Lifan power equipment.

Lifan Power USA is the sole distributor for Lifan power equipment in the United States. Lifan's unmatched investment in research & development ensures quality engines, generators, pressure washers, and water pumps at an extraordinary value. Lifan continues to be an innovator and presently holds over 4,000 international patents. Product performance has earned Lifan the reputation of dependability and value in all their international markets.

Lifan has been manufacturing and selling innovative and value driven products worldwide for over 20 years. Lifan is distributed in over 100 countries. Lifan is one of the largest publicly traded companies in China with sales over one billion dollars annually and 14,000 employees.

## **LIFAN POWER USA**

As the largest engine manufacturer in China, Lifan builds more than five million small engines each year. This worldwide presence has been made possible by producing equipment that is durable, reliable, and rugged for any market.

Lifan Power USA prides itself in standing behind all Lifan products with our comprehensive warranty policy. Lifan Power USA continues to offer the highest level of service and support in the industry. With proven performance and unmatched value, Lifan power equipment will always keep you running.

All information in this publication is based on the latest product information available at the time of approval for printing. EquipSource, LLC reserves the right to make changes at any time without notice and without incurring any obligation. The copyright of this document belongs to EquipSource, LLC. No part of this publication may be reproduced without the written permission of EquipSource, LLC.

**LIFAN POWER USA**  
**2205 Industrial Park Road**  
**Van Buren, AR 72956**  
**[www.lifanpowerusa.com](http://www.lifanpowerusa.com)**  
**(866) 471-7464**