

BLUEDRIVE K POWER FIN™

User's Guide

PF-240K

WARNING

For your own safety and that of your equipment, make sure to take the following precautions. Failure to follow warning notices and instruction may result in property damage, serious injury or death. Please keep this manual and read it carefully before using the product. If the manual is lost, please contact our after-sales service center.



E115029

SAFETY PRECAUTIONS

1. This product is intended for powering water-leisure products and should only be used in the water. Usage outside of the intended use are prohibited and may result in serious injury.
2. When using this product, it is necessary to consider the use precautions of floating products and the rules of local waters.
3. When using this product, it is necessary to consider the depth of the water is sufficient to float the device, so that it will not be damaged.
4. While using this product, each passenger is required to use a CGA (coast guard approved) life jacket or equivalent PFD device and oars.
5. When using this product, a proper emergency stop leash should be tied to the user's ankle.
6. Do not use this power fin in fast flowing rivers, strong currents, or sudden storms or tides.
7. Do not use this product under the influence of drugs and/or alcohol.
8. Children and persons with physical or mental disabilities should not use this device without supervision from an experienced adult. This device is not a toy and is not recommended for children under 8 years old. Cleaning and user maintenance should not be handled by children without supervision.
9. Do not modify or add additional parts to your device in any way. Doing so may void your device's warranty and repair. If your device malfunctions or has damage, please contact your nearest after-sales service center.
10. If you encounter any obstructions in your propeller such as seaweed, fishing line, mud trapping or other debris; turn off the power immediately before attempting to remove or clean the propeller.
11. If you experience a collision during use such as with stones or other obstacles, turn swiftly and timely to avoid falling into the water.
12. Only clean your device and its motor using fresh water. Use of sea water or salt water may erode or damage your motor.
13. This product does not include batteries. The power fin should only be powered with 12V batteries. Always follow safe battery usage procedures and guidelines to avoid electric shock and damage to your device.
14. Never use your device during thunderstorms or lightning conditions.
15. Always ensure the device is securely connected to your water-leisure product before every use.
16. The device should only be supplied with SELV (Safety Extra Low Voltage) which can only be applied via remote control. Should you require maintenance or replacement of your SELV part, please contact your appointed after-sales service center.
17. If you do not intend to use your device for some time, it is recommended to remove the battery from your remote control.
18. When the device is not in use, it is recommended to be stored at a temperature of -15°-45°C avoiding direct sunlight.
19. Should your device become scrapped or require replacement, it is recommended to follow your local electronics recycling laws or return it to your dealer for safe disposal.

FCCID: 2AVFRPF-240K

FCC statement

This equipment has been tested and found to comply within the limits of a Class B digital device, pursuant to Part 15 of the FCC Rules. These limits are designed to provide reasonable protection against harmful interference in residential installation. This equipment generates, uses and can radiate radio frequency energy and, if not installed and used in accordance with the instructions, may cause harmful interference to radio communications. However, there is no guarantee that interference will not occur in a particular installation.

- If this equipment does cause harmful interference to radio or television reception, which can be determined by turning the equipment off and on, the user is encouraged to try to correct the interference by one or more of the following measures:
 - Reorient or relocate the receiving antenna.
 - Increase the separation between the equipment and receiver.
 - Connect the equipment into an outlet on a circuit different from that to which the receiver is connected.
 - Consult the dealer or an experienced radio/TV technician for help.

This device complies with part 15 of the FCC Rules. Operation is subject to the following two conditions: (1) This device may not cause harmful interference, and (2) this device must accept any interference received, including interference that may cause undesired operation.

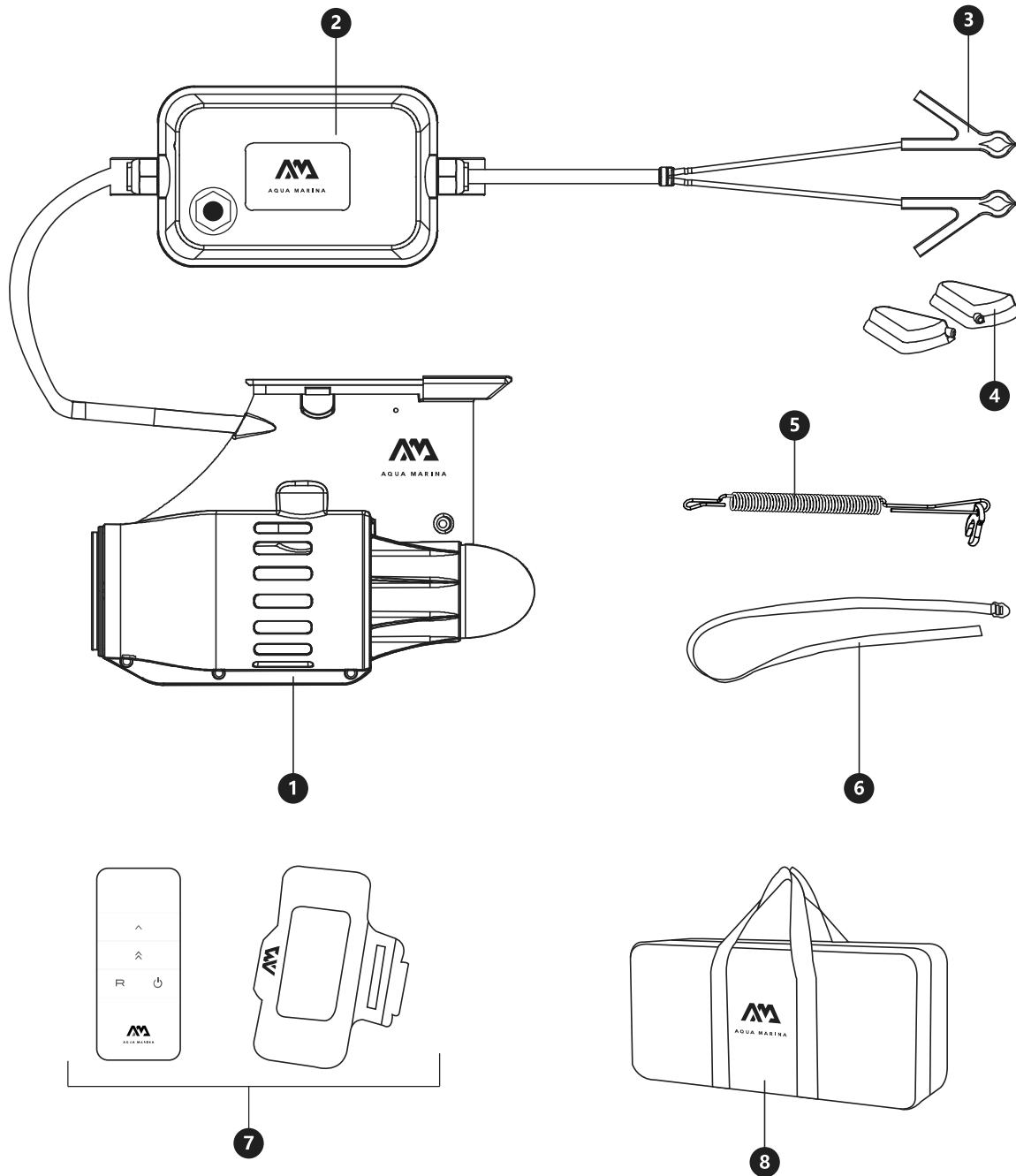
CAUTION: Any changes or modifications not expressly approved by the grantee of this device could void the user's authority to operate the equipment.

RF EXPOSURE WARNING

This equipment complies with FCC radiation exposure limits set forth for an uncontrolled environment.

The equipment must not be co-located or operating in conjunction with any other antenna or transmitter.

COMPONENTS



- ① Underwater Jet
300 x 210 x 110mm (11.8" x 8.3" x 4.3")
- ② Control Box
230 x 122 x 64mm (9.1" x 4.8" x 2.5")
- ③ Battery Terminal
- ④ Waterproof Cover of Battery Terminal

- ⑤ Emergency Stop Leash
- ⑥ Retaining Strap (1.5m)
- ⑦ Wireless Remote Control and Arm Band
- ⑧ Carry Case
610 x 282 x 175mm (24" x 11.1" x 6.9")

TECHNICAL PARAMETERS

<p>Underwater Jet</p>	<p>Motor Power: 12V DC, 240W Operating Speed: 4-6km/h</p> <ul style="list-style-type: none"> • Low speed (⤴) : Up to 4km/h • High speed (⤴) : Up to 6km/h • Reverse (⤵) : Up to 1.8km/h <p>Protective Cover Material: Flame retardant ABS Dimension: 300 x 210 x 110mm (11.8" x 8.3" x 4.3") Weight: 2.55 kg (5.6 lbs)</p>
<p>Control Box</p>	<p>Material: IP68, flame retardant PC + ABS Dimension: 230 x 122 x 64mm (9.1" x 4.8" x 2.5") Net Weight: 0.6kg (1.3 lbs)</p>
<p>Interface</p>	<p>Battery terminal with waterproof cover</p>
<p>Remote Control</p>	<p>Model: RC-23BK Operation Frequency Range: 2400~2483.5 MHz Radio Frequency Transmitting Power: 36 mW Max Output Power: 6.18 dBm (E.I.R.P)</p>
<p>Packing Dimensions</p>	<p>62 x 29.5 x 18.5cm (24.4" x 11.6" x 7.3")</p>
<p>Packing weight / Net weight:</p>	<p>5.0 kg (11.0 lbs) / 3.2 kg (7.0 lbs)</p>

INSTALLATION AND INSTRUCTIONS

1. Open the packing box and check whether all components are present.

2. Install power fin into kayak/iSUP (as shown in image below).

2.1 Insert the bottom of power fin into the fin base of kayak/iSUP.

2.2 Insert the slide in push-in pin into the fin base.



2.1



2.2

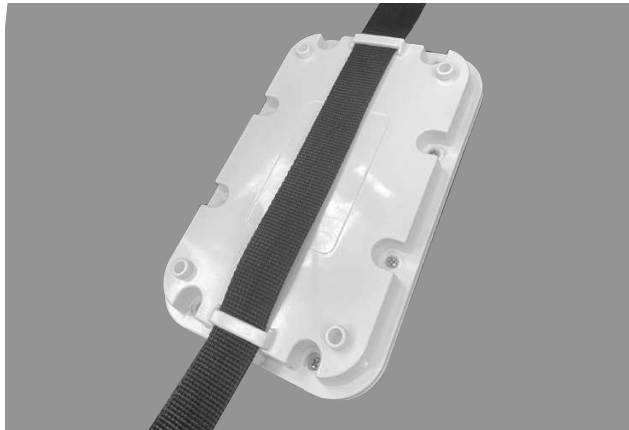
3. Connect the Control Box with the External Battery

3.1 The power fin package does not include batteries, please configure the battery pack based on your personal needs. The power fin must only be supplied with 12V batteries.

3.2 When connecting the power cord with the external battery, the red battery terminal must be connected to the positive pole of the battery, and the black battery terminal must be connected to the negative pole.



3.3 Fasten the control box to the external battery with the retaining strap.



4. Recommended Storage Battery Specifications

Voltage	Max. Power	Working Current		Battery Specifications	Estimated Runtime
		Gear	Working Current		
12V	240W	Low Speed	10A	12V×80AH	8H
		High Speed	18.5A		4H
		Reverse	7.2A		11H
12V	240W	Low Speed	10A	12V×60AH	6H
		High Speed	18.5A		3H
		Reverse	7.2A		8H
12V	240W	Low Speed	10A	12V×40AH	4H
		High Speed	18.5A		2H
		Reverse	7.2A		5.5H

5. Remote Control





5.1 Please install the battery (23A 12V) before first use.

5.2 Load the remote control into a waterproof sleeve, and wear it on your arm (as shown in the image below).

5.3 Note: For the remote control, the effective distance is under 10 meters.



5.4 Operations of Remote Control:

- a.  : Start and operate at low speed.
- b.  : Start and operate at high speed.
- c.  : Start and operate in reverse gear.
- d.  : Stop. (Note: This is NOT a “start” button.)





The user can do remote operation on kayak/iSUP products.

5.5 Pairing Operation

In most cases, pairing is not needed.

When there are over 2 devices, please follow pairing operations below:

- a. Install the remote control battery before pairing.
- b. Simultaneously press   buttons on the remote control until the indicator light flashes twice.
- c. Then, connect the emergency stop leash to the control box and energize the control box for pairing. The remote control can now be used normally.

6. Emergency Stop Leash

6.1 The emergency stop leash works as both a power switch and emergency stop switch.

6.2 For standby mode, clutch the emergency stop leash in the right position of the control box for pairing.

6.3 To shut the battery off, pull out the emergency stop leash directly.

6.4 Before each use, always connect the emergency stop leash. If the red pull cord is removed from the control box in emergency, the motor will immediately stop to avoid any danger.



6.2



6.4

7. Storage Temperature for Control Box

Recommended storage temperature is 18-25 °C.



18-25 °C

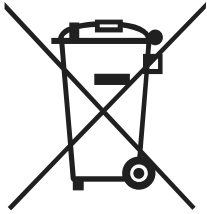
MAINTENANCE

Maintenance Part	Time Interval	Maintenance Process
Remote Control	Every month	If you do not intend to use your device for a prolonged period of time, it is recommended to remove the battery.
Underwater Jet	After each use	Remove debris such as seaweed and fishing line. Use fresh water to wash the jet and allow to air dry.
Control Box	After each use	Wipe down with a clean cloth and allow to dry.
Control Box	In any case	Do not open the control box under any circumstances.
The back side of propeller	After each use	Disassemble the propeller to check for debris such as fishing line, seaweed, and other obstructions wrapped around or in the propeller spindle. Failure to remove debris will result in a decline in propeller power.
The connection section of appliances	Before and after each use	Check for scratches and breaks in the wire. Contact one of our after-sales service centers for replacement if needed. If there water marks or other foreign debris please remove while detached from power.

GUIDANCE ON PROBLEMS

No.	Problem description	Solutions
1	The remote control does not work	Check whether the battery is loaded properly and has power.
2	The booster does not work	Check whether the emergency stop leash is properly installed.
3	The operation of propeller stagnate	<ol style="list-style-type: none"> 1. Check and remove debris such as fishing line, seaweed, or other obstructions wrapped in the propeller. 2. Check if there is power to the control box. 3. Check that the connection end of the control box is free of debris and properly connected.
4	The booster is with big noise and serious shaking	<ol style="list-style-type: none"> 1. Check and remove debris such as fishing line, seaweed, or other obstructions wrapped in the propeller. 2. Check that the propeller is intact. If it has been broken, please contact your local after-sales service center. 3. Check for missing or loose screws. If yes, please contact your local after-sales service center. 4. Disconnect the power supply and spin the propeller to ensure it can turn freely and smoothly. If you encounter any resistance there may be an obstruction in the motor. Please contact your local after-sales service center.

DISPOSAL AND ENVIRONMENTAL PROTECTION



This marking indicates this product should not be disposed with other household waste. To prevent possible harm to the environment or human health from uncontrolled waste disposal, recycle it responsibly to promote the sustainable reuse of material resources. You can obtain information on disposal from your local authorities.

To return your used device, please use the return and collection systems or contact the retailer where the product was purchased. They can take this product for environmental safe recycling.

WARRANTY AND AFTER SERVICE CONTACT INFORMATION

This product carries a manufacturers warranty of 1 year. Any modification or damages caused by improper usage beyond the scope of product use outlined in this manual will void your warranty and eligibility for repair.



AM Official Site



AM HOW-TO Guide



AM Service Center List