



PETER COPPOLA®

PURPLE
SMOOTHING
TREATMENT
GUIDE

for Blonde, Silver or White Hair tones

For a successful treatment service, we recommend gathering all products and tools for processing prior to starting the treatment. Below is a list of items you'll need to ensure the smoothest results:

PRODUCTS INCLUDED IN KIT:

Purple Smoothing Treatment 3oz.
α-Keratin Clarifying Shampoo 3oz.

RECOMMENDED TOOLS NOT INCLUDED IN KIT:

Chemical Cape
Non-Metallic Duckbilled Clips
Tint Bowl
Tint Brush
Tail Comb
Round Brush
Blow Dryer
Flat Iron

For assistance with processing questions, please contact Customer Support by any option below:

855.426.7765 | Info@petercoppola.com
PeterCoppola.com

USAGE CHART

PURPLE
SMOOTHING
TREATMENT

HAIR LENGTH	APPROXIMATE
Short (1" - 6")	1 oz.
Chin Length (6" - 12")	2 oz.
Mid-Length (12" - 18")	2.5 oz. - 3 oz.
Long (18" +)	3 oz. - 4 oz.

CURL KEY

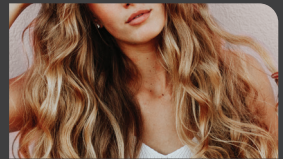
The Peter Coppola® Curl Key outlines the various curl patterns that can be found in most hair textures. Understanding your clients curl pattern, coupled with their potential style desires, will help you on your journey to mastering smoothing and refinishing techniques.



1 - STRAIGHT



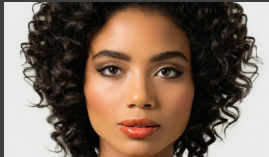
2 - MINIMAL WAVE



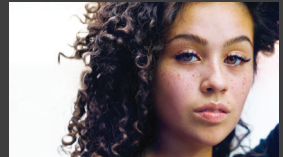
3 - WAVY



4 - OPEN WAVE



5 - CURLY



6 - VERY CURLY



7 - COILED



8 - VERY COILED



9 - ZIG ZAG

PROCESSING CHART

CURL PATTERN	FOR SMOOTH STRAIGHT HAIR			FOR FRIZZ REDUCTION		
	VIRGIN HAIR	COLOR / PRELIGHTENED	GRAY HAIR	VIRGIN HAIR	COLOR / PRELIGHTENED	GRAY HAIR
1 - STRAIGHT	-	-	-	-	-	20 min
2 - MINIMAL WAVE	25 min	20 min	25 min	20 min	20 min	20 min
3 - WAVY	25 min	20 min	25 min	20 min	20 min	20 min
4 - OPEN WAVE	25 min	20 min	25 min	20 min	20 min	20 min
5 - CURLY	30 min	25 min	30 min	25 min	20 min	25 min
6 - VERY CURLY	30 min	25 min	30 min	30 min	25 min	30 min
7 - COILED	35 min	30 min	35 min	30 min	25 min	30 min
8 - VERY COILED	35 min	30 min	35 min	30 min	25 min	30 min
9 - ZIG ZAG	35 min	30 min	35 min	30 min	25 min	30 min

TREATMENT INSTRUCTIONS

ITEMS NEEDED:

Purple Smoothing Treatment | α -Keratin Clarifying Shampoo
Chemical Cape | 4 Non-Metallic Duckbilled Clips | Tint Bowl | Tint Brush
Tail Comb | Round Brush | Hair Dryer | Flat Iron (or Curling Iron optional)

1

CLIENT CONSULTATION

We always recommend that you begin with asking questions and utilizing the **Curl Key** to help you determine the best steps in moving forward with your treatment service.

2

CLARIFY THE HAIR

Using the α -KERATIN CLARIFYING SHAMPOO, gently cleanse the hair; towel dry, leaving the hair slightly damp.

For Virgin or hair with heavy product build up, shampoo first with a retail shampoo like Peter Coppola® α -KERATIN SMOOTHING SHAMPOO. For all other hair types, shampoo once with Peter Coppola® α -KERATIN CLARIFYING SHAMPOO

3

SECTION THE HAIR

Section the hair into a standard T-part using clips, this will allow for complete control during application.

4

APPLY THE TREATMENT

SHAKE WELL BEFORE USE. Start with 1-2 oz., adding more to your bowl as needed, depending on the hair length and texture. Take your first 1/4" section starting in the nape, horizontal to your parting. Starting 1/8" from the root, apply a thin layer, saturating evenly to the ends. Comb the section to ensure even distribution of product. Continue working up through the head until all sections are thoroughly and evenly saturated and hair is combed smooth.

5

PROCESS

Utilize the **Curl Key** and **Processing Chart** as your timing guide to determine processing, between 20-35 minutes. Comb the hair every 5 minutes while processing; this important step will evenly distribute the product throughout the hair and ensure the smoothest results.

6

RINSE

Rinse the product completely from the hair with warm water, ensuring a minimum of 5 minutes rinsing.

For thick and coarse or more porous hair types - after rinsing the hair thoroughly, you may want to fill your sink and bathe the hair in clean, lukewarm water for another 5 minutes. This will help to ensure the hair is completely free of the treatment product.

7

BLOW DRY

Section the hair, and blow dry the hair 100%. For some hair types and desired results, round brushing may be suitable for finishing.

PRO TIP 1: We highly recommend using a round boar bristle brush on ¼ inch sections while using heavy tension when blow drying, to stretch the cuticle into a smooth position.

PRO TIP 2: For clients with gray, color treated or heavily highlighted hair - allow the hair to completely cool prior to flat ironing or curling to avoid color shift or lift.

8

FLAT IRON OR CURL

Flat Iron (or Curl the hair - optional depending on the guest's desired results) at a heat setting between 350° - 400° F. Section the hair once more & flat iron or curl the hair using 1/8" - 1/2" horizontal sections.

Section Sizes & Temperature Settings should be determined by the hair type and texture. A more delicate hair type should use a lower heat setting on a larger section of hair. A more resistant hair type should use a higher heat setting on a smaller section of hair.

PRO TIP 1: When flat ironing each section, it is recommended to make between 3-8 passes. Once you have achieved the silky & smooth finish, move on to the next section of hair.

PRO TIP 2: Pay close attention to the root area during flat ironing, as it often has more texture or frizz.

PRO TIP 3: Gently glide over the ends of each section to minimize the heat applied, as this part of the hair tends to be more fragile.

9

FINISHING (optional)

After Flat Iron work is complete, to add moisture and smooth any fly-aways, you may add a few drops of the LEGACY HIGH-DEFINITION GLOSS WITH AZULENE or α-KERATIN SMOOTHING SERUM for a polished finish.

AFTERCARE

Treatment can last up to 3 months with proper processing & use of Peter Coppola® aftercare regimen

Ask clients to wait for approximately 24-hours before shampooing, conditioning & restyling.

Clients may use a hair clip or elastic after the treatment without the concern of indenting or banding the hair.

Recommend clients shampoo no more than 3-4 times a week. Always instruct clients to use Peter Coppola® shampoo and conditioner to maintain their in-salon Smoothing Treatment.

For clients with Blonde, Silver or White hair tones - we recommend utilizing our Legacy Blondest Shampoo & Conditioner with Azulene once or twice a week to reduce unwanted warm/yellow tones. We also suggest alternating between another Peter Coppola® shampoo and conditioner without pigment to maintain balance in your aftercare routine and properly care for your hair color.

HAIR TYPE	COLLECTION TO USE
Thick, Coarse or Curly	α -KERATIN - SMOOTHING
Straight, Fine or Wavy	α -KERATIN - HYDRATING & REPAIRING
Color Treated (all hair textures)	LEGACY - COLOR CONTROL
Blonde, Silver or White (all hair textures)	LEGACY - BLONDEST WITH AZULENE

PRO TIP: GOING SWIMMING? Recommend a Peter Coppola® HAIR MASK. Clients can wet their hair with fresh water and then apply a small amount of any Peter Coppola® HAIR MASK prior to swimming to create a barrier that will protect from salt or chlorinated water. A fresh rinse after swimming will leave their hair feeling silky, smooth and ultra-healthy.