

COURT CREATOR SET-UP INSTRUCTIONS

BSTNCL100

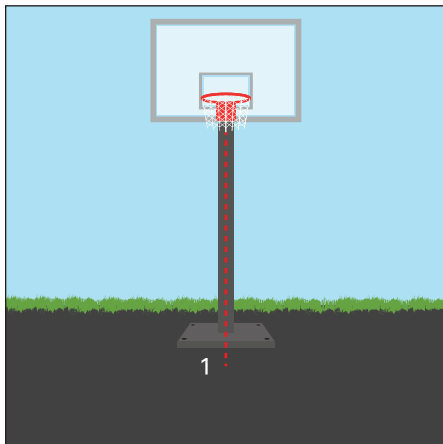
Our video instructions provide the best guidance for setting up your Court Creator.
They can be viewed online at



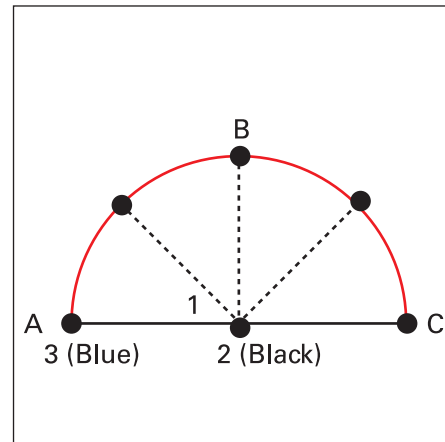
Please call us if you have any questions or concerns at **1-855-4RUKKET**
Please read our product safety warnings before setup

Parts Included

Ringed Cord
Colored Chalk, 3-pack
Stencil Numbers
Stencil Rukket Sports Logo

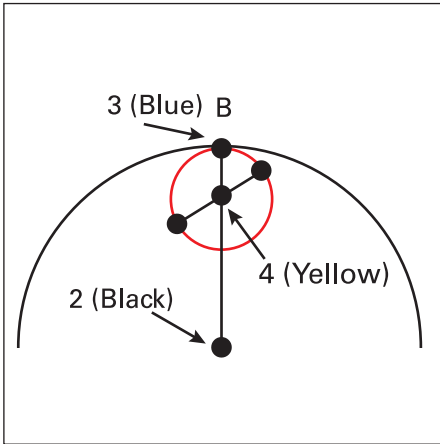


1. Mark a starting point(1) on the ground directly underneath center of backboard as shown

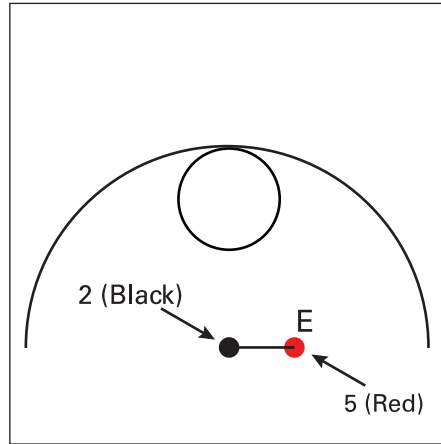


2. Have another person hold down black ring (2) on starting point mark. Bring blue ring (3) to position "A". Insert chalk into blue ring and draw line from position "A" to position "C".
Note: String must be taught while drawing all lines.

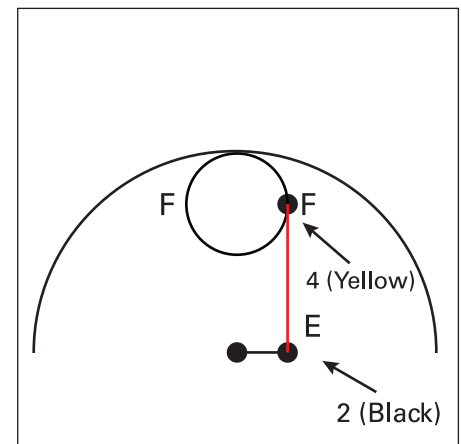
COURT CREATOR SET-UP INSTRUCTIONS



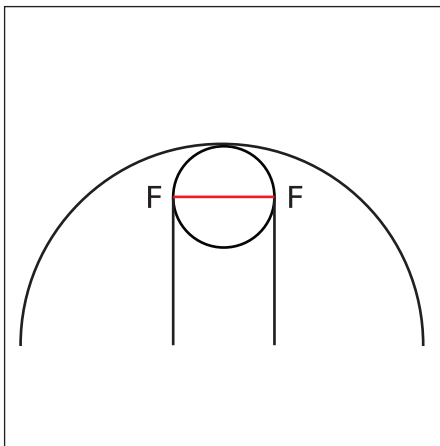
3. With black ring (2) under backboard, bring blue ring (3) to position "B". Have another person hold down yellow ring (4). Insert chalk into blue ring (4). Draw circle around yellow ring (4).



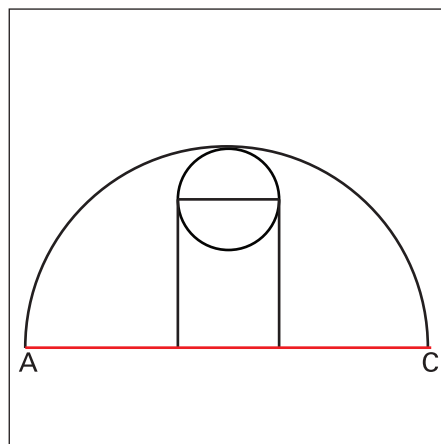
4. With black ring (2) under backboard, bring red ring (5) to position "E" and make a mark inside red ring.



5. Place black ring at position "E". Bring yellow ring (4) to position "F" and make a mark inside yellow ring (4). Draw line from "F" to "E" along edge of string. Repeat this step for opposite side.



6. Using string as guide, draw line from "F" to "F" at mark.



7. Using string as guide, draw line from "A" to "C".



8. Using Rukket Sports logo and number stencils, mark court as desired with chalk.

Warnings

- Before drawing on your driveway with chalk, test the chalk in an unnoticeable spot on your driveway to confirm it will wash off completely and not leave any discoloration.
- Not a toy, strings and plastic pieces are potential choking hazards for children under the age of 15 (or whatever age we want to use). Product should be used by adult and then stored in a place out of reach of children.
- Chalk should not be ingested. If ingested, call your doctor immediately for advice on next steps.
- Be careful when using templates, leaving the templates outside will accelerate deterioration of the templates.
- If used carefully, templates will be able to be used 2 to 3 times before beginning to wear or deteriorate. Take care of your templates to ensure they last as long as possible.
- Chalk will eventually get used up, once Chalk is used up, you can use chalk that is found in local stores near you. Just make sure the chalk will fit inside the rings for easy drawing.