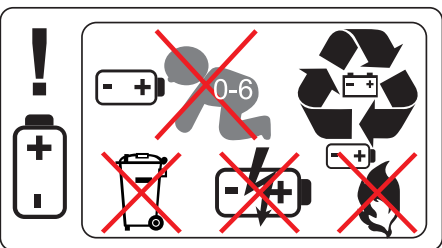
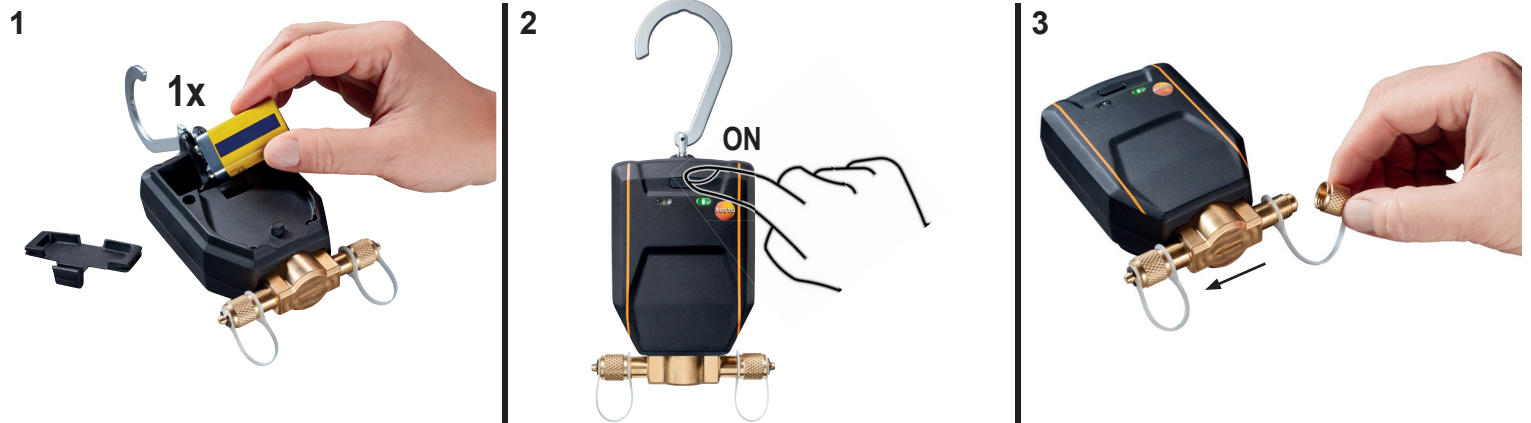


testo Smart Valve  
0560 5600



[www.testo.com](http://www.testo.com)










ca. 95 x 119 x 47 mm (3.74 x 4.69 x 1.85 in)	0.57 kg (20.10 oz) (with battery)	9.0V (6LR61) alkaline battery	IP 54	-10°C...+50°C (+14 °F ... +122 °F)	max.  35 bar (507.63 psi)

## Approval and Certification

<b>Product</b> 产品名称	testo smart valve
<b>Mat.-No.</b> 型号	0560 5600
<b>Date</b> 日期	24.03.2022

**i** The use of the wireless module is subject to the regulations and stipulations of the respective country of use, and the module may only be used in countries for which a country certification has been granted. The user and every owner has the obligation to adhere to these regulations and prerequisites for use, and acknowledges that the re-sale, export, import etc. in particular in countries without wireless permits, is his responsibility.

Country	Comments
<b>Australia</b>	 E 1561
<b>Canada</b>	IC: 6127B-05605600 See IC Warnings
<b>Europa + EFTA</b>	 <p><b>i</b> The EU Declaration of Conformity can be found on the testo homepage <a href="http://www.testo.com">www.testo.com</a> under the product specific downloads.</p> <p><b>EU countries:</b>            Belgium (BE), Bulgaria (BG), Denmark (DK), Germany (DE), Estonia (EE), Finland (FI), France (FR), Greece (GR), Ireland (IE), Italy (IT), Latvia (LV), Lithuania (LT), Luxembourg (LU), Malta (MT), Netherlands (NL), Austria (AT), Poland (PL), Portugal (PT), Romania (RO), Sweden (SE), Slovakia (SK), Slovenia (SI), Spain (ES), Czech Republic (CZ), Hungary (HU), Republic of Cyprus (CY).</p> <p><b>EFTA countries:</b>            Iceland, Liechtenstein, Norway, Switzerland</p>  WEEE Reg. no.: DE 75334352
<b>Japan</b>	 201-210972 See Japan Information
<b>South Korea</b>	 R-R-te2-05605600 see KCC Warning
<b>Turkey</b>	Authorized
<b>United Kingdom (UK)</b>	 <p><b>i</b> The UK Declaration of Conformity can be found on the testo homepage <a href="http://www.testo.com">www.testo.com</a> under the product specific downloads.</p>
<b>USA</b>	 FCC ID: WAF-05605600 See FCC Warnings

Bluetooth® Information 蓝牙信息	Feature 特征与参数	Values 数值
	Bluetooth® range 范围	Typical 50 m 50米无障碍场地
	Radio type 型号	Bluetooth® Low Energy (BLE) 4.2
	Bluetooth® company 制造商	Lierda Science & Technology Group Co., Ltd
	RF Band 射频频段	2402 – 2480MHz
	Power output [E.I.R.P] 输出功率	≤10dBm
	<b>Bluetooth® SIG Listing</b>	Declaration ID
	Member company	Testo SE & Co. KGaA

## IC Warnings

### CAN ICES-003(B)/NMB-003(B):

This Class B digital apparatus complies with Canadian ICES-003.

Cet appareil numérique de la classe B est conforme à la norme NMB-003 du Canada.

### RSS-Gen & RSS-247 statement:

This device contains licence-exempt transmitter(s)/receiver(s) that comply with Innovation, Science and Economic Development Canada's licence-exempt RSS(s).

Operation is subject to the following two conditions:

- (1) this device may not cause interference, and
- (2) this device must accept any interference, including interference that may cause undesired operation of the device.

L'émetteur/récepteur exempt de licence contenu dans le présent appareil est conforme aux CNR d'Innovation, Sciences et Développement économique Canada applicables aux appareils radio exempts de licence. L'exploitation est autorisée aux deux conditions suivantes :

- (1) L'appareil ne doit pas produire de brouillage
- (2) l'appareil doit accepter tout brouillage radioélectrique subi, même si le brouillage est susceptible d'en compromettre le fonctionnement.

### Caution: Radio Frequency Radiation Exposure

This equipment complies with radio frequency exposure limits set forth by the Innovation, Science and Economic Development Canada for an uncontrolled environment.

This equipment should be installed and operated with a minimum distance of 20 cm between the device and the user or bystanders.

### Co-Location:

This device must not be co-located or operated in conjunction with any other antenna or transmitter.

### Attention : exposition au rayonnement de radiofréquences

Cet équipement est conforme aux limites d'exposition aux radiofréquences définies par la Innovation, Sciences et Développement économique Canada pour un environnement non contrôlé.

Cet équipement doit être installé et utilisé avec un minimum de 20 cm de distance entre le dispositif et l'utilisateur ou des tiers.

### Co-Location

Ce dispositif ne doit pas être utilisé à proximité d'une autre antenne ou d'un autre émetteur.

## FCC Warnings

Information from the FCC (Federal Communications Commission)

### For your own safety

Shielded cables should be used for a composite interface. This is to ensure continued protection against radio frequency interference.

### FCC warning statement

This equipment has been tested and found to comply with the limits for a Class B digital device, pursuant to Part 15 of the FCC Rules. These limits are designed to provide reasonable protection against harmful interference in a residential installation. This equipment generates, uses and can radiate radio frequency energy and, if not installed and used in accordance with the instructions, may cause harmful interference to radio communications. However, there is no guarantee that interference will not occur in a particular installation. If this equipment does cause harmful interference to radio or television reception, which can be determined by turning the equipment off and on, the user is encouraged to try to correct the interference by one or more of the following measures:

- Reorient or relocate the receiving antenna.
- Increase the separation between the equipment and receiver.
- Connect the equipment into an outlet on a circuit different from that to which the receiver is connected.
- Consult the dealer or an experienced radio/TV technician for help.

### Caution

Changes or modifications not expressly approved by the party responsible for compliance could void the user's authority to operate the equipment. Shielded interface cable must be used in order to comply with the emission limits.

### Warning

This device complies with Part 15 of the FCC Rules.

Operation is subject to the following two conditions:

- (1) this device may not cause harmful interference, and
- (2) this device must accept any interference received, including interference that may cause undesired operation.

### Caution: Radio Frequency Radiation Exposure

This equipment complies with radio frequency exposure limits set forth by the FCC for an uncontrolled environment.

This equipment should be installed and operated with a minimum distance of 20 cm between the device and the user or bystanders.

### Co-Location:

This device must not be co-located or operated in conjunction with any other antenna or transmitter.

## Japan Information

当該機器には電波法に基づく、技術基準適合証明等を受けた特定無線設備を装着している。

## KCC Warning

해당 무선 설비는 운용 중 전파혼신 가능성이 있음



People • Technology • Solutions

HEAD OFFICE : AUCKLAND Tel : (09) 579 1990  
 WELLINGTON : Tel : (04) 499 3591 CHRISTCHURCH : Tel : (03) 366 0017  
 Email : sales@eurotec.co.nz WEBSITE : www.eurotec.co.nz