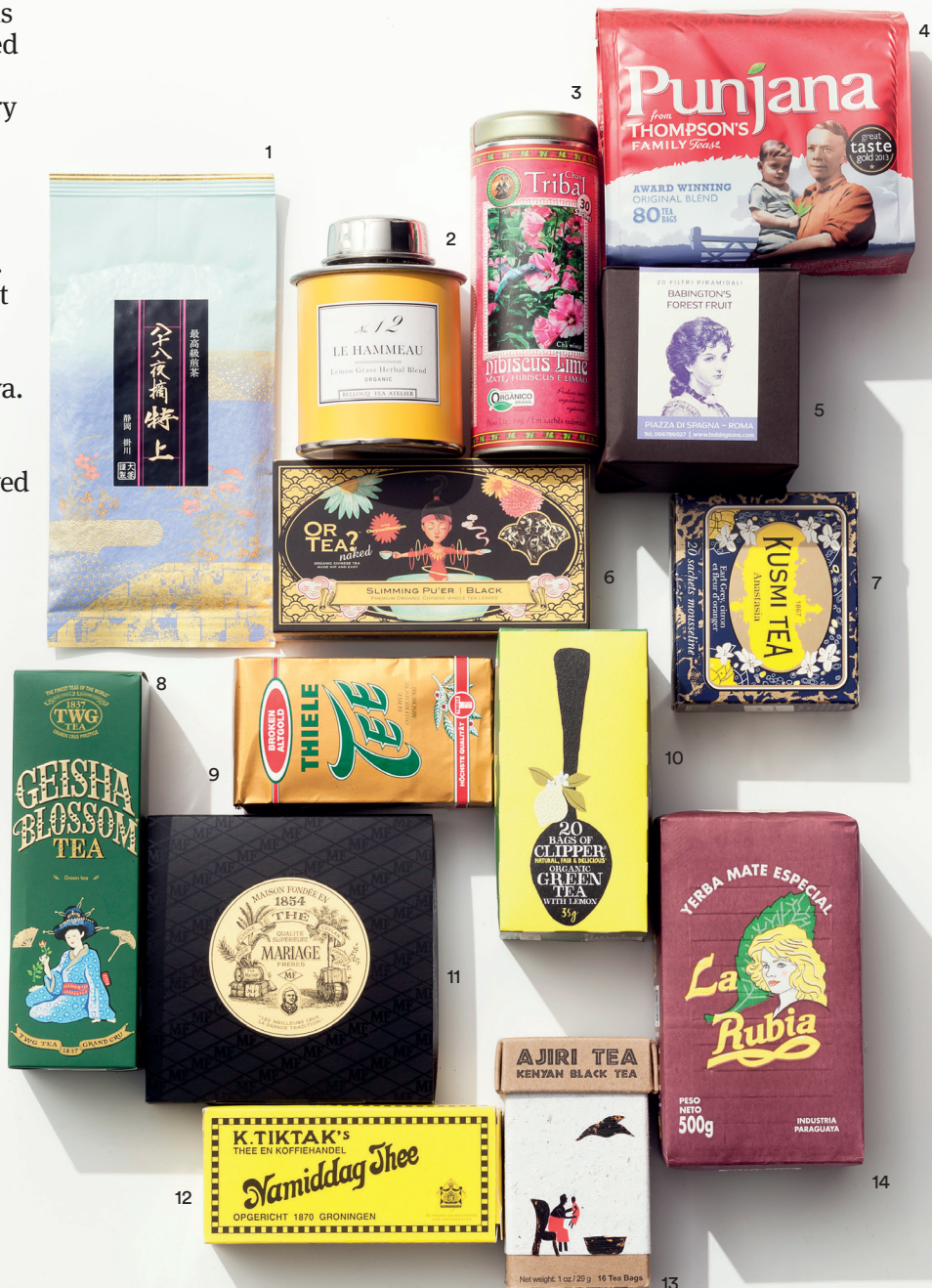


Local Flavours

Camellia sinensis is the most consumed beverage in the world. Tea's history stretches back to ancient China (2737 BC) where royalty used it as a medicinal drink. It was first brought to Europe in 1606 via the Dutch's trading post in Java. Nowadays, tea – in all its different flavours – is enjoyed across the globe.



1 Otsuka Green Tea since 1869; Nissaka area, Japan 2 Bellocq Tea Atelier since 2010; New York, USA 3 Tribal Brasil since 1998; Campo Largo, Brazil 4 Thompson's Family Teas since 1896; Belfast, Northern Ireland 5 Babington's since 1893; Rome, Italy 6 Or Tea? since 2012; Hong Kong 7 Kusmi Tea since 1867; St Petersburg, Russia 8 TWG Tea since 1837; Singapore 9 Ostfriesentee since 1873; Ostfriesland, Germany 10 Clipper Tea since 1984; Dorset, England 11 Mariage Frères since 1854; Paris, France 12 TikTak Thee since 1870; Groningen, the Netherlands 13 Ajiri Tea since 2009; Kisii Highlands, Kenya 14 La Rubia Yerba Mate since 1989; Obligado, Itapúa, Paraguay