

NOTES:

- Hardware and instructions are included for stud and non-stud locations. Choose the appropriate installation based on your wall substrate.
- 2-person installation
- Sconce may be mounted horizontally or vertically.

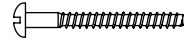
REQUIRED TOOLS:

- Electric Drill
- 1/8" Drill Bit for Stud Locations
- 1/2" Drill Bit for Non-stud Locations
- Phillips Head Screwdriver
- Level
- Low Tack Tape

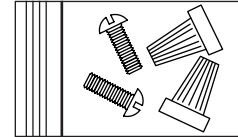
INCLUDED HARDWARE & TOOLS:



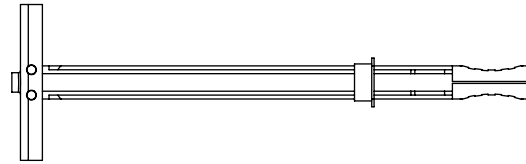
#10-24 x 2" Machine Screw (x2)



#10 x 2" Wood Screw (x2)



Wiring Kit (x1)

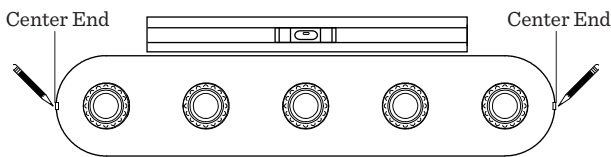


Zip Toggle (x2)

Mounting Template (x1)

INSTALLATION INSTRUCTIONS

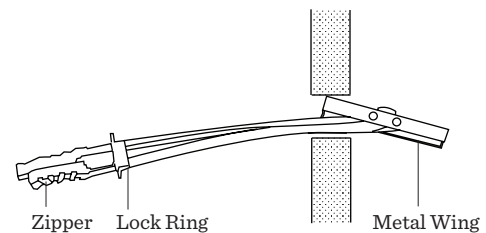
1. Hold Harlow Sconce against wall in mounting location. Make sure entire junction box is covered. With level, use pencil to mark Center Ends of fixture.



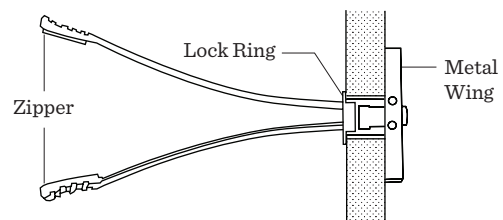
2. Align Points A and B on enclosed Mounting Template with pencil marks on wall. Attach Template securely to wall using low tack tape. Adjust template using level if needed. For horizontal mounting, proceed to Step 3. For vertical mounting, skip to Step 11.

3. For horizontal mounting, determine wall substrate behind points C and D.
4. For stud locations, drill through drywall and into stud at points C and D using 1/8" Drill Bit.
5. For non-stud locations, drill through drywall at points C and D using 1/2" Drill Bit. Remove Mounting Template.

6. Push Metal Wing end of Zip Toggle through drywall while holding Zipper end of Zip Toggle.



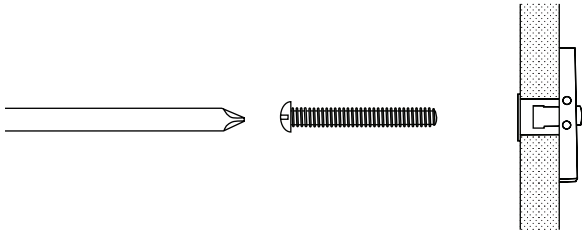
7. When Metal Wing flips back into the open position, push Lock Ring up tight against wall and separate Zipper halves. Zippers will break off against Lock Ring.



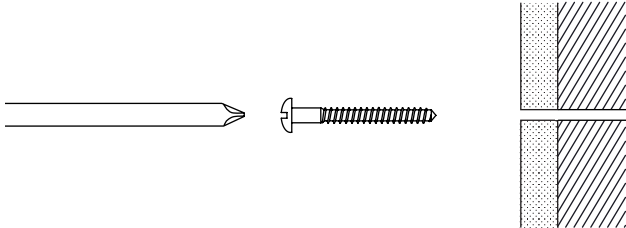
8. Thread Machine Screws into Lock Rings and/or Wood Screws into pre-drilled holes. Tighten with Phillips Head Screwdriver leaving screwheads 3/8" from wall.

.....

Non-stud Location



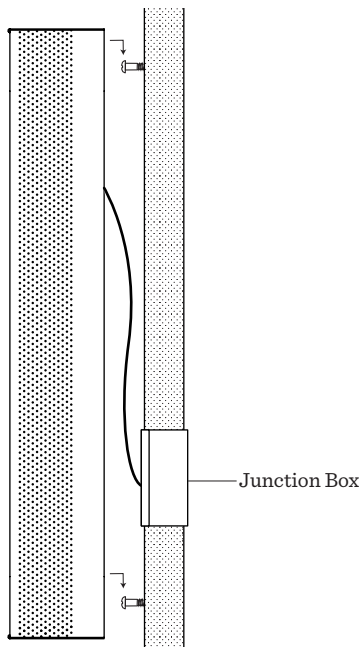
Stud Location



.....

9. Align keyholes with Screws and slide Harlow Sconce down to mount. If Sconce is loose, remove from wall and tighten Screws. Install Sconce again to check fit. Repeat as necessary.

10. Once fit is adjusted, remove Sconce and wire fixture to electrical box using Wiring Kit. Two people may be required to hold the fixture while wiring. Consult electrician if necessary.



11. For vertical mounting, determine wall substrate behind points E and F.

12. For stud locations, drill through drywall and into stud at points E and F using 1/8" Drill Bit.

13. For non-stud locations, drill through drywall at points E and F using 1/2" Drill Bit. Remove Mounting Template. Return to Step 6-10 to complete installation