

NOTES:

Instructions included for 3 hook and 5 hook Bureau Racks.

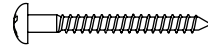
REQUIRED TOOLS:

- Electric Drill
- 1/8" Drill Bit for Stud Installation
- 1/2" Drill Bit for Non-stud Installation
- Phillips Head Screwdriver
- Level
- Tape Measure

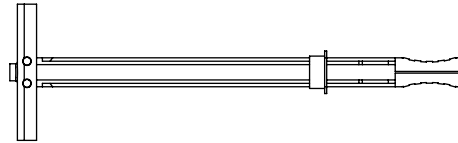
INCLUDED HARDWARE:



#10-24 x 1.75" Machine Screw (x2)



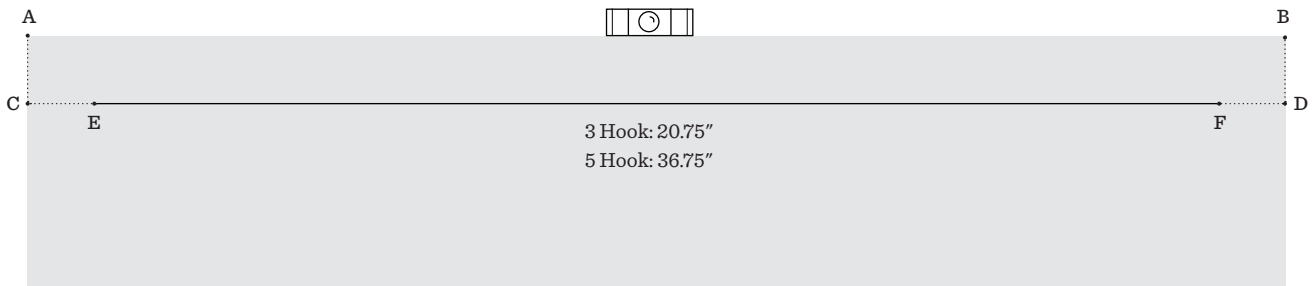
#8 x 1.75" Wood Screw (x2)



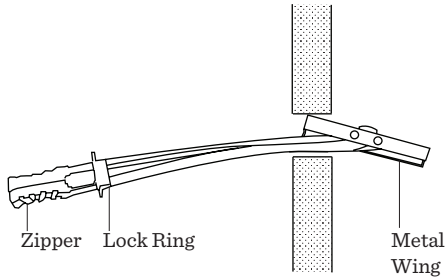
Zip Toggle (x2)

INSTALLATION INSTRUCTIONS

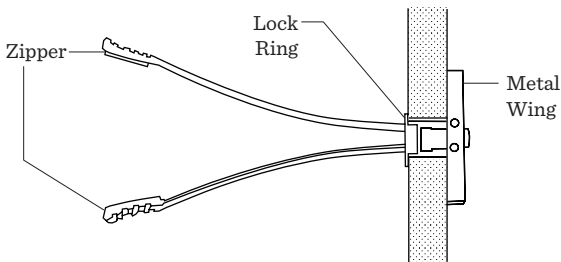
1. Hold Bureau Rack against wall in mounting location. Check Level and mark top corners of Bureau Rack, points A and B in drawing.
2. Using level, measure 2" below points A and B, mark points C and D.
3. Using level, measure 2" in from C and D, mark Keyhole Mounting Locations E and F. Make sure the line between points E and F is level, and the distance is precisely as listed in drawing.



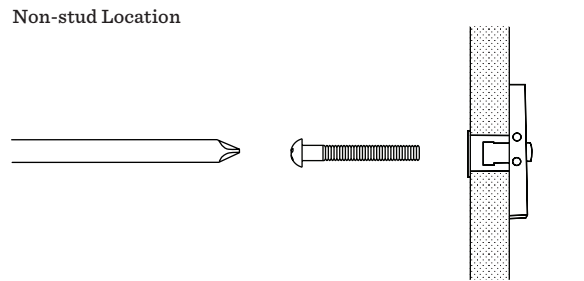
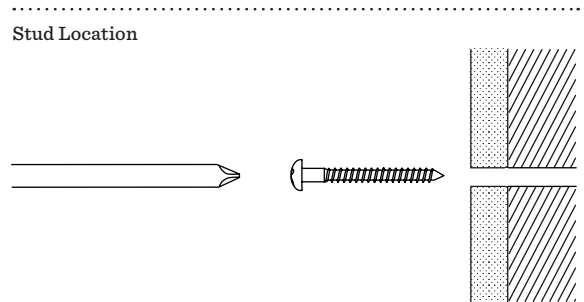
4. Determine wall substrate behind points E and F.
For stud locations, proceed to Step 5. For non-stud locations skip to Step 6.
5. For stud locations, drill through drywall and stud at points E and F using 1/8" Drill Bit.
6. For non-stud locations, drill through drywall at points E and F using 1/2" Drill Bit.
7. Push Metal Wing end of Zip Toggle through drywall while holding Zipper end of Zip Toggle.



8. When Metal Wing flips back into open position, push Lock Ring up tight against wall and separate Zipper halves. Zippers will break off at lock ring.



9. Depending on wall substrate, thread Wood Screws into pre-drilled holes and/or Machine Screw into Lock Rings. Tighten with Phillips Head Screwdriver leaving screwheads 1/4" from wall.



10. Align Keyhole with Screws and slide Bureau Rack down to mount. If loose, remove from wall and tighten Screws. Install Bureau Rack again to check fit. Repeat as necessary.

