

Arader LIVE

September 25th, 2021
Saturday, 1pm EST



1016 Madison Avenue
New York, NY 10075

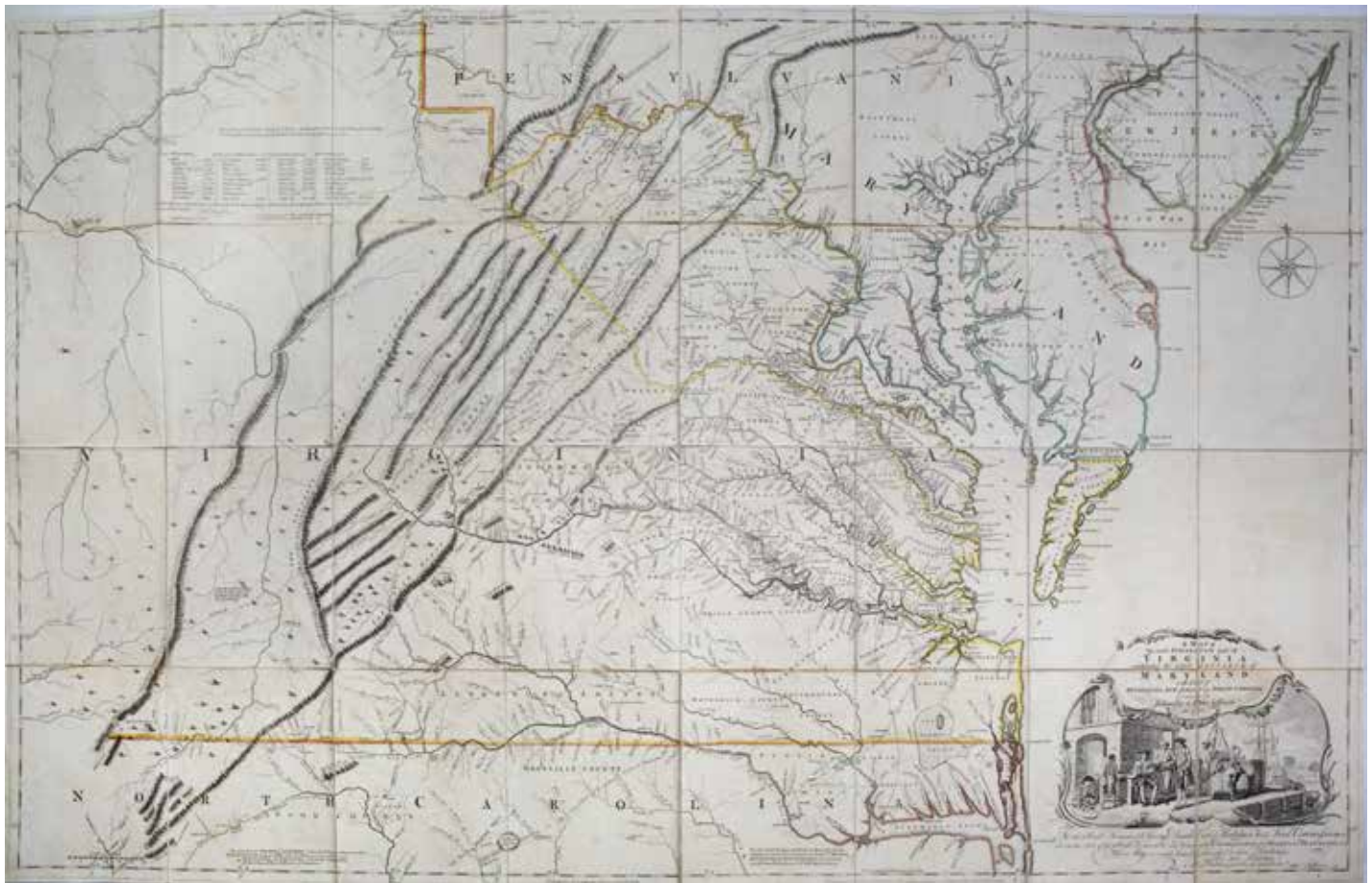
Audubons, Natural History Watercolors,
Rare Maps, Rare Books, & Assorted Americana.

Arader LIVE

Arader Galleries is pleased to announce the launch of our new online auction platform, Arader LIVE. Arader LIVE is easy to use with simple sign-up and seamless interactive bidding available in real time and by absentee.

The buyers commission offered direct through Arader LIVE is lower than can be found on third party sites. We are offering 5% off the buyers standard 25% buyer's commission on all lots purchased through Arader LIVE making your buyer's premium only 20%!

Visit www.araderLIVE.com to explore the upcoming September 25th sale and all future auctions from Arader Galleries. You can download Arader LIVE on your Android mobile device and it will soon become available through the Apple app store as well.



Front Cover: Lot 18 - Audubon, White Pelican.

Back Cover: Lot 78 - Arnoldi, World Map; Lot 158 - Durer, Five Soldiers and a Turk on Horseback.

Above: Lot 124 - Fry & Jefferson, A Map of the most Inhabited part of Virginia.

Right: Lot 53 - French School, An Allegorical Garden; Lot 39 - Keulemans, Scops Owl.

Date: **Saturday, September 25th 2021 - 1^{PM} EST**

Sale Preview / **Selected works by Audubon are available to view at Arader**
Location: **Galleries 1016 Madison Avenue, New York, NY 10075**

Arader Galleries charges a 20% Buyer's Premium on all purchases at auction made In Person, by Telephone, and Absentee, as well as only 20% on AraderLive.

LiveAuctioneers, charge a 25% Buyer's Premium on all purchases at Arader Galleries' auctions made on their website.

Note: There is an additional 3.5% processing fee for credit card purchases.

Auctioneer: **John Paul**

Catalog: To order a catalog or obtain more information, please contact auctions@aradernyc.com.



Birds of America. John James Audubon (1785-1851).

First edition aquatint engravings with original hand color on double elephant folio Whatman paper.
London: Robert Havell Jr., 1827-1838. (Lots 1 - 26).

Lot 1. AUDUBON, John James (1785-1851).

Blue Jay, Plate 102.

38 ½" x 25 ½" sheet, 49 ½" x 37" framed.

Provenance: John Vickers Painter's Collection.

Retail: \$32,500. Estimate: \$22,000 - 30,000.

Comparables: Arader Galleries, 2019 - \$37,500;

Christie's, 2004 - \$33,460.

Reserve: \$15,000.

Lot 2. AUDUBON, John James (1785-1851).

Rose-Breasted Grosbeak, Plate 127.

37 ⅞" x 25 ⅞" sheet.

Retail: \$15,000. Estimate: \$8,000 - 12,000.

Comparables: Christie's, 2004 - \$11,950;

Arader Galleries, 2021 - \$7,200.

Reserve: \$4,000.

Lot 3. AUDUBON, John James (1785-1851).

Great Cinerous Owl, Plate 351.

37 ¼" x 24 ¾" sheet, 49 ½" x 37" framed.

Retail: \$75,000. Estimate: \$50,000 - 70,000.

Comparables: Guernsey's, 2013 - \$79,300;

Arader Galleries, 2019 - \$49,400.

Reserve: \$35,000.



Lots 4-9 are wonderful examples of Audubon's aquatints, and are the finest we have ever seen. Of the roughly 180 sets of Audubon produced from 1827-1838, we know of only six that were never bound (one for King William, one in Moscow and 4 others). These aquatints come from one of the unbound sets owned by John Vickers Painter in Cleveland in the 1880's. Because it was never bound, they have huge untrimmed paper sheets of approximately 39 ½" x 26 ½" in size, while a standard bound Audubon has a paper size of 38 ¾" x 25 ¼". To collectors, a full uncut sheet makes a tremendous difference. Beyond this, they are in mint original condition with no restoration, and color with the highest level of gradations creating compelling dimension and depth.

Lot 4. AUDUBON, John James (1785-1851).

Mockingbird, Plate 21.

39 ½" x 26 ¾" sheet.

Provenance: John Vickers Painter's Deckled Collection.

Retail: \$48,000. Estimate: \$25,000 - 35,000.

Comparables: Christie's, 2004 - \$31,070;

Arader Galleries, 2016 - \$30,000.

Reserve: \$18,000.

"In a word, kind reader, it is where Nature seems to have paused, as she passed over the earth, and opening her stores, to have strewed with unsparing hand the diversified seeds from which have sprung all the beautiful and splendid forms which I should in vain attempt to describe, that the Mocking-bird should have fixed its abode, there only that its wondrous song should be heard. But where is that favoured land?--It is in this great continent" - Audubon's *Ornithological Biography*, 1831.

State Bird of Texas.



The finest image of an Eagle, our American Icon.



Lot 5. AUDUBON, John James (1785-1851). *White-Headed Eagle, Plate 31.* 26 ½" x 39" sheet.

Provenance: John Vickers Painter's Deckled Collection.

Retail: \$55,000. Estimate: \$35,000 - 50,000. **Reserve: \$30,000.**

Comparables: Arader Galleries, 2020 - \$36,580; Arader Galleries, 2019 - \$34,375.

"The figure of this noble bird is well known throughout the civilized world, emblazoned as it is on our national standard, which waves in the breeze of every clime, bearing to distant lands the remembrance of a great people living in a state of peaceful freedom" - Audubon's *Ornithological Biography*, 1831.



Lot 6. AUDUBON, John James (1785-1851).
Swallow-Tailed Hawk, Plate 72. 26 $\frac{5}{8}$ " x 39 $\frac{3}{8}$ " sheet.
 Provenance: John Vickers Painter's Deckled Collection.

Retail: \$18,750. Estimate: \$10,000 - 15,000. **Reserve: \$8,000.**
 Comparables: Christie's, 2004 - \$11,353;
 Dallas Auction Gallery, 2015 - \$8,125.

"The flight of this elegant species of Hawk is singularly beautiful and protracted. It moves through the air with such ease and grace, that it is impossible for any individual, who takes the least pleasure in observing the manners of birds, not to be delighted by the sight of it whilst on wing. Gliding along in easy flappings, it rises in wide circles to an immense height, inclining in various ways its deeply forked tail, to assist the direction of its course, dives with the rapidity of lightning, and, suddenly checking itself, reascends, soars away, and is soon out of sight."
 - Audubon's *Ornithological Biography*, 1831.



Lot 7. AUDUBON, John James (1785-1851).
House Wren, Plate 83. 39" x 26 $\frac{1}{2}$ " sheet.
 Provenance: John Vickers Painter's Deckled Collection.

Retail: \$18,750. Estimate: \$10,000 - 15,000.
 Comparables: Christie's, 2004 - \$15,535;
 Neal Auction Company, 2011 - \$8,365.
Reserve: \$6,000.



Lot 8. AUDUBON, John James (1785-1851).
Black Warrior, Plate 86.
 39 $\frac{1}{4}$ " x 26 $\frac{1}{4}$ " sheet.
 Provenance: John Vickers Painter's Deckled Collection.

Retail: \$15,000. Estimate: \$9,000 - 12,000. **Reserve: \$5,000.**
 Comparables: Arader Galleries, 2019 - \$11,250;
 Christies, 2004 - \$10,158.



Lot 9. AUDUBON, John James (1785-1851).
Three-toed Woodpecker, Plate 132.
 38 $\frac{3}{4}$ " x 26 $\frac{1}{4}$ " sheet.
 Provenance: John Vickers Painter's Deckled Collection.

Retail: \$11,875. Estimate: \$7,000 - 10,000. **Reserve: \$5,000.**
 Comparables: Christie's, 2004 - \$11,950;
 Arader Galleries, 2017 - \$7,930.

**Lots 10-25,
Property of an Alabama Gentleman.**

This handsome print of a male Wild Turkey shows the majestic bird standing next to Giant Cane. It is believed that Audubon painted this bird circa 1825 while staying at the plantation of Mrs. Robert Percy near St. Francisville, Louisiana.

Lot 10. AUDUBON, John James (1785-1851).
Male Turkey, Plate 1.

38 $\frac{3}{4}$ " x 26 $\frac{1}{2}$ " sheet, 49 $\frac{3}{4}$ " x 36 $\frac{3}{4}$ " framed.

Estimate: \$125,000 - 175,000. **Reserve: \$95,000.**

Comparables: Arader, 2014 - \$207,400;

Arader, 2017 - \$183,000.



Lot 11. AUDUBON, John James (1785-1851).
Female Turkey, Plate 6.

25 $\frac{3}{4}$ " x 38 $\frac{3}{4}$ " sheet, 37" x 49 $\frac{1}{2}$ " framed.

Estimate: \$75,000 - 100,000. **Reserve: \$60,000.**

Comparables: Arader, 2019 - \$100,000;

Arader, 2014 - \$91,500.

This is one of Audubon's great compositions. This example has the addition by Havell of the aquatinting to the copperplate that Lizars engraved. Audubon said of this bird, "... Here you have [the male Turkey's] mate, now converted into a kind of anxious parent, leading her young progeny, with measured step and watchful eye, through the intricacies of the forest. The chickens, still covered with down, are running among her feet in pursuit of insects" - Audubon's Ornithological Biography, 1831.



State Bird of Pennsylvania.

Lot 12. AUDUBON, John James (1785-1851).
Ruffed Grouse, Plate 41.

26 ¼" x 37 ¼" sheet, 37 ⅛" x 49 ⅞" framed.

Estimate: \$40,000 - 60,000. **Reserve: \$25,000.**

Comparables: Arader, 2018 - \$73,200; Arader, 2018 - \$56,250.

"On the ground, where the Ruffed Grouse spends a large portion of its time, its motions are peculiarly graceful. It walks with an elevated, firm step, opening its beautiful tail gently and with a well-marked jet, holding erect its head, the feathers of which are frequently raised, as are the velvety tufts of its neck. It poises its body on one foot for several seconds at a time, and utters a soft cluck, which in itself implies a degree of confidence in the bird that its tout ensemble is deserving of the notice of any bystander."

- Audubon's *Ornithological Biography*, 1831.

One of Audubon's Most Dramatic Images.



Lot 13. AUDUBON, John James (1785-1851).
Virginia Partridge, Plate 76. 26 ½" x 39 ¼" sheet, 37" x 49 ⅝" framed.
 Estimate: \$60,000 - 90,000. **Reserve: \$45,000.**
 Comparables: Sotheby's, 2007 - \$73,000; Arader, 2019 - \$62,500.

Lot 14. AUDUBON, John James (1785-1851).
Fish Hawk or Osprey, Plate 81.
37 $\frac{7}{8}$ " x 25" sheet, 49 $\frac{5}{8}$ " x 36 $\frac{5}{8}$ " framed.

Estimate: \$120,000 - 160,000. **Reserve: \$90,000.**
Comparables: Arader, 2014 - \$164,700;
Arader, 2019 - \$158,750.

"Comparing the great size of this bird, its formidable character, its powerful and protracted flight, and the dexterity with which, although a land bird, it procures its prey from the waters of the ocean, with the very inferior powers of the bird named Kingfisher, I should be tempted to search for a more appropriate appellation than that of Fish-Hawk, and, were I not a member of a republic, might fancy that of Imperial Fisher more applicable to it" - Audubon's *Ornithological Biography*, 1831.



One of Audubon's Genius Icons.

Lot 15. AUDUBON, John James (1785-1851).
Wood Ibis, Plate 216.
38" x 25 $\frac{1}{2}$ " sheet, 49 $\frac{1}{2}$ " x 37" framed.

Estimate: \$100,000 - 150,000. **Reserve: \$75,000.**
Comparables: Arader, 2015 - \$136,640;
Guernsey's, 2013 - \$118,950.

"As soon as they have discovered a place abounding in fish, they dance as it were all through it, until the water becomes thick with mud stirred from the bottom by their feet." - Audubon's *Ornithological Biography*, 1831

One of Audubon's Great Icons, with the configuration of the neck being a work of genius.
The cover image of Roger Tory Peterson book, Audubon's Birds of America: The Audubon Society Baby Elephant Folio.



Lot 16. AUDUBON, John James (1785-1851). *Louisiana Heron*, Plate 217. 26 $\frac{3}{8}$ " x 29 $\frac{1}{2}$ " sheet, 37" x 50" framed.

Estimate: \$125,000 - 175,000. **Reserve: \$95,000.**

Comparables: Arader, 2019 - \$212,500; Arader, 2020 - \$171,100.



Lot 17. AUDUBON, John James (1785-1851). *White Ibis*, Plate 222.

25 $\frac{1}{2}$ " x 37 $\frac{7}{8}$ " sheet, 37" x 49 $\frac{1}{2}$ " framed.

Estimate: \$25,000 - 40,000. **Reserve: \$18,000.**

Comparables: Arader Galleries, 2020 - \$36,600;
Arader Galleries, 2016 - \$25,620.

"The change in the colouring of the bill, legs, and feet of this bird, that takes place in the breeding-season, is worthy of remark, the bill being then of a deep orange-red, and the legs and feet of a red nearly amounting to carmine. The males at this season have the gular pouch of a rich orange-colour, and somewhat resembling in shape that of the Frigate Pelican, although proportionally less. During winter, these parts are of a dull flesh-colour. The irides also lose much of their clear blue, and resume in some degree the umber colour of the young birds. I am thus particular in these matters, because it is doubtful if any one else has ever paid attention to them." - Audubon's *Ornithological Biography*, 1831.

State Bird of Louisiana.

Lot 18. AUDUBON, John James (1785-1851).
Standing Pelican, Plate 251.
38" x 25 ¼" sheet, 49 ½" x 37" framed.

Estimate: \$90,000 - 120,000. **Reserve: \$70,000.**
Comparables: Arader, 2018 - \$118,750;
Christie's, 2004 - \$107,550.

"The flight of the Brown Pelican, though to appearance heavy, is remarkably well sustained, that bird being able not only to remain many hours at a time on wing, but also to mount to a great height in the air to perform its beautiful evolutions."
- Audubon's *Ornithological Biography*, 1831.



One of the Three Audubon birds that Hung in the Reagan White House.
He loved images depicting cities in the background; This one shows a View of Key-west, Florida.



Lot 19. AUDUBON, John James (1785-1851). *Great White Heron, Plate 281.* 25 7/8" x 38" sheet, 37 1/8" x 49 1/2" framed.

Estimate: \$75,000 - 100,000. **Reserve: \$60,000.**
Comparables: Arader, 2014 - \$87,840; Guernsey's, 2014 - \$87,500.

One of the Great Icons That Has Never Been Equaled for Drama.



Lot 20. AUDUBON, John James (1785-1851).
Roseate Spoonbill, Plate 321.
26 1/8" x 39 3/8" sheet, 37" x 50" framed.
Provenance: From the Famous Saxe-Meiningen Set.
Estimate: \$125,000 - 175,000. **Reserve: \$95,000.**
Comparables: Arader, 2016 - \$176,900;
Christie's, 2004 - \$175,500.

With rosy pink wings, an orange tail, and a naked, blotchy, scaly grayish-green head, the Roseate Spoonbill is at once beautiful and bizarre. "When I sold this image to Lauren Bacall, 35 years ago, she called it "marvelous" as she directed that it be hung over a portrait of Humphrey Bogart over her piano in her apartment at the Dakota." - *Graham Arader.*



Lot 21. AUDUBON, John James (1785-1851).
Green Heron, Plate 333.
25 1/2" x 38" sheet, 37" x 49 1/2" framed.
Provenance: From the Famous Saxe-Meiningen Set.

Estimate: \$45,000 - 70,000. **Reserve: \$35,000.**
Comparables: Sotheby's, 2009 - \$74,500;
Guernsey's, 2013 - \$61,000.

"This species is more generally known than any of our Herons, it being very extensively dispersed in spring, summer, and early autumn. It ranges along our many rivers to great distances from the sea, being common on the Missouri and its branches, from which it spreads to all such localities as are favourable to its habits. To the north of the United States, however, it is very seldom seen, it being of rare occurrence even in Nova Scotia. At the approach of winter it retires to the Floridas and Lower Louisiana, where individuals, however, reside all the year, and many remove southward beyond the limits of our country."
- *Audubon's Ornithological Biography, 1831.*



Lot 22. AUDUBON, John James (1785-1851).
Golden Eye Duck, Plate 342.
 26 $\frac{3}{8}$ " x 38 $\frac{3}{4}$ " sheet, 36 $\frac{3}{4}$ " x 49 $\frac{1}{4}$ " framed.

Estimate: \$25,000 - 35,000.

Reserve: \$15,000.

Comparables: Guernsey's, 2014 - \$31,250;
 Christie's, 2004 - \$26,290.

"This species exhibits a degree of cunning which surpasses that of many other Ducks, and yet at times it appears quite careless. When I have been walking, without any object in view, along the banks of the Ohio, between Shippingport and Louisville, I have often seen the Golden-eyes, fishing almost beneath me, when, although I had a gun, they would suffer me to approach within a hundred paces. But at other times, if I crawled or hid myself in any way while advancing towards them, with a wish to fire at them, they would, as if perfectly aware of my intentions, keep at a distance of fully two hundred yards." - Audubon's *Ornithological Biography*, 1831.



Lot 23. AUDUBON, John James (1785-1851). *White Heron, Plate 386.* 25 $\frac{3}{4}$ " x 38 $\frac{1}{4}$ " sheet, 37 $\frac{1}{8}$ " x 50" framed.

Estimate: \$40,000 - 60,000. **Reserve: \$25,000.**

Comparables: Christie's, 2004 - \$57,360; Guernsey's, 2013 - \$42,700.

A Graceful Image Befitting the Swan - Havell personally added the charming underwater attributes.



Lot 24. AUDUBON, John James (1785-1851). *Common American Swan*, Plate 411. 25 $\frac{5}{8}$ " x 38 $\frac{1}{2}$ " sheet, 37" x 49 $\frac{3}{4}$ " framed.

Estimate: \$100,000 - 150,000. **Reserve: \$75,000.**

Comparables: Arader Galleries, 2020 - \$250,000; Christie's, 2004 - \$119,500.

State Bird of Louisiana.



Lot 25. AUDUBON, John James (1785-1851). *Brown Pelican*, Plate 421. 25 $\frac{3}{4}$ " x 37 $\frac{1}{2}$ " sheet, 37" x 49 $\frac{1}{2}$ " framed.

Estimate: \$90,000 - 120,000. **Reserve: \$70,000.**
Comparables: Arader Galleries, 2021 - \$109,200;
Arader Galleries, 2015 - \$107,360.

"The Brown Pelican, which is one of the most interesting of our American birds... Look at them as they fly over the bay; listen to the sound of the splash they make as they drive their open bills, like a pock-net, into the sea, to scoop up their prey; and snatch up the frightened fishes that strive to escape from them. Down they go, again and again. What voracious creatures they are!" - *Audubon's Ornithological Biography*, 1831.

Lot 27, Property of a Texas Gentleman.



Lot 26, Property of a Lady



Lot 26. AUDUBON, John James (1785-1851).
Cock of the Plains, Plate 371.
25 ½" x 38 ¼" sheet, 37" x 50" framed.

Estimate: \$2,500 - 5,000. **Reserve: \$2,000.**
Comparable: Arader Galleries, 2018 - \$10,313.

"He displays, in the presence of his intended mate, a variety of attitudes. His love-song is a confused, grating, but not offensively disagreeable tone,--something that we can imitate, but have a difficulty in expressing--Hurr-hurr-hurr-r-r-r-hoo, ending in a deep, hollow tone, not unlike the sound produced by blowing into a large reed." - Audubon's Ornithological Biography, 1831.

Lot 27. AUDUBON, John James (1785-1851).
Wild Turkey (Male), Plate 287.
Chromolithograph printed in colors.
New York: J. Bien, 1858-1860.
39 ½" x 26 ½" sheet, 54" x 41" framed.

Estimate: \$8,000 - 12,000. **Reserve: \$7,000.**
Comparables: Sotheby's, 2016 - \$10,625;
Old World Auctions, 2013 - \$8,165.

The Bien edition was initiated by John Woodhouse Audubon, the younger of the two Audubon sons. Originally conceived to be a full reissue of the 435 images in 44 parts consisting of ten images each, the project was discontinued in 1860 after only 15 parts had been issued. As a result, these plates are even rarer than the first Birds of America edition.



Lot 28. BROOKSHAW, George (c. 1751-1823).
[Group of 3 Brookshaw Apples]
1. Plate LXXXVIII - 22 ½" x 18 ½" sheet.
2. Plate XCI - 22 ½" x 18" sheet.
3. Plate XCIII - 22 ½" x 18" sheet.
Aquatints with stipple engraving and original hand color.
London: 1804-1812.

Retail: \$12,000. Estimate: \$6,000 - 9,000. **Reserve: \$4,000.**

Originally published in parts between 1804 and 1812 and dedicated to the Prince Regent. Many of the specimens were taken from the Royal Gardens at Hampton Court and Kensington Gardens, among other great British gardens. George Brookshaw's splendid "Pomona Britannica" is a masterpiece among 19th-century British flower books. The publication of the "Pomona" marked the re-emergence of the acclaimed artist into the public eye after a total disappearance of nearly a decade.

BATEMAN, James (1811-1897).

Lithograph with original hand color, from *The Orchidaceae of Mexico and Guatemala*
London: J. Ridgeway, 1837-1843.

**From the Largest, Heaviest, but also the Finest Orchid Book ever Issued.
The Text is also sound for growers.**



Lot 29. *Cynoches Ventricosum*,
Plate. 5.

28 1/8" x 21" sheet.

Retail: \$5,500. Estimate: \$3,000 - 5,000.

Reserve: \$1,500.



Lot 30. *Brasavola Glauca*,
Plate. 16.

28 1/2" x 21" sheet

Retail: \$5,500. Estimate: \$3,000 - 5,000.

Reserve: \$1,500.



Lot 31. *Oncidium Ornithorhynchum*,
Plate. 4.

29" x 21" sheet.

Retail: \$4,500. Estimate: \$2,000 - 4,000.

Reserve: \$1,200.



Lot 32. *Epidendrum Aromaticum*,
Plate 10.

29" x 20 1/2" sheet.

Retail: \$4,500. Estimate: \$2,000 - 4,000.

Reserve: \$1,200.



Lot 33. *Oncidium Cavendishianum*,
Plate. 3.

29" x 20 3/4" sheet.

Retail: \$5,500. Estimate: \$3,000 - 5,000.

Reserve: \$1,500.

Lot 34. FURBER, Robert (c. 1674-1756), After CASTEELS, Pieter (1684-1749).

Twelve Months of Flowers.

12 Hand-colored engravings.

Kensington: Robert Furber, 1730[-1732].

Each approx: 16 ½" x 12 ½" sheet.

Retail: \$28,000. Estimate: \$15,000 - 25,000. **Reserve: \$10,000.**

The best source of knowledge about 18th Century English Gardening. Furber was a nurseryman with gardens near Hyde Park Gate, in Kensington, and a churchwarden at St. Mary Abbot's, Kensington for many years. The Twelve Months of Flowers were issued as a luxurious catalogue for his stock: over 400 flowers are illustrated, and each is identified in the key below the picture, so that customers could easily order their requirements.



January



February



March



April



May



June



July



August



September



October



November



December

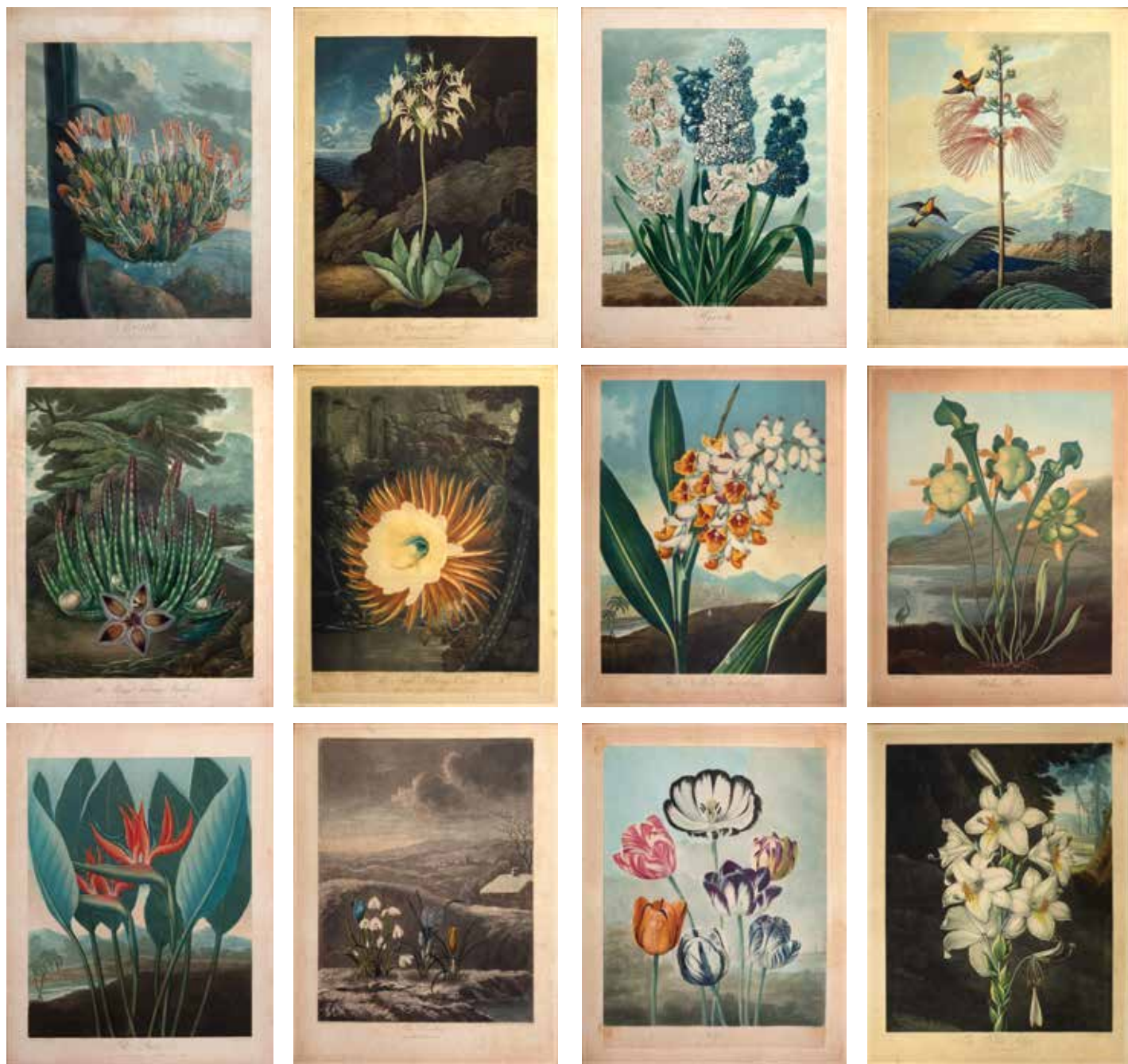
Lot 35, Property of a Florida Gentleman.

THORNTON, Robert John. (1768-1837).

Aquatints, mezzotint stipple, line engravings with original hand color.

From The Temple of Flora; Or Garden of Nature. London, 1799-1807.

Conceived on a grandiose scale, Thornton's work was to comprise three parts: a dissertation on the sexual reproductive cycle of plates; an explanation of Linnaeus's plant system, lavishly illustrated with botanical plates and portraits of botanists; and "The Temple of Flora" which was to have no less than seventy large plates of exotic plant species arranged according to the classification system of Linnaeus. Each species was to appear in its native environment.



Lot 35. Group of 12: "Tulips, Hyacinths, Night Blowing Cereus, Queen Flower, White Lily, Nodding Renealmia, Aloe, American Cowslip, Pitcher Plant, Large flower Sensitive plant, Snow Drop, Maggot bearing Stapelia. Approx. 21 ½" x 16 ½" sheet, each.

Estimate: \$5,000 - 10,000. Reserve: \$4,000.

Lot 35, not subject to return, please see in person to bid as there is considerable fading to color and paper is badly toned.

Lot 36, Property of a California Lady.



Lot 36. THORNTON, Robert John. (1768-1837).
Blue Egyptian Water Lily.

Aquatints, mezzotint stipple, line engravings with original hand color. From *The Temple of Flora; Or Garden of Nature*. London, 1799-1807.

21" x 16" visible; 37" x 32" framed.

Estimate: \$800 - 1,500. **Reserve: \$500.**



Lot 38. HEFELE, J. F. (German, D. 1710).
Parrot and Fruit.

Watercolor on paper.

9 1/4" x 7 1/4" sheet, 23 1/4" x 20 1/2" framed.

Retail: \$18,000. Estimate: \$8,000 - 15,000.

Reserve: \$6,000.

Little is known about the German-born artist J. F. Hefe, his personal life, or his artistic training. It is known that he traveled to England as a soldier in the service of the Dutch Prince William of Orange, who overthrew James II of England in the non-violent revolution of 1688. Hefe remained in England until his death around 1710.



Lot 37. CAYLEY, Neville H. Peniston (Australian, 1853-1903).
A Kookaburra Feeding a Frog to its Young.

Watercolor with traces of pencil.

Signed lower right: 'Neville Cayley'.

18" x 12 3/4" sheet.

Retail: \$25,000. Estimate: \$15,000 - 22,000. **Reserve: \$8,000.**

Neville Henry Peniston Cayley's meticulous and attractive watercolors of iconic species contributed greatly to public awareness of Australian birds. He was the father of Neville William Cayley, the noted ornithologist and bird artist. Cayley lived mainly in New South Wales, and exhibited widely in Australia and internationally.



Lot 39. KEULEMANS, Johannes G. (Dutch, 1842-1912).

Scops Owl. Watercolor and pencil on paper.

Signed with initials lower right: 'JGK'

6 1/2" x 4 1/2" sheet, 16" x 14 1/4" framed.

Retail: \$14,000. Estimate: \$8,000 - 12,000. **Reserve: \$6,000.**

Literature: Lilford, Thomas Littleton Powys, 4th Baron (1833-1896), *Coloured Figures of the Birds of the British Islands*, London: Taylor and Francis, for R.H. Porter, 1895-97, vol. I, pl. 47.



Lot 40. MILLIKEN, Robert W. (IRISH, 1920-2014).
Pheasant Flush.
Watercolor and ink on paper.
Signed.
15" x 19" sheet.

Retail: \$1,900. Estimate: \$1,200 - 1,800.

Reserve: \$1,000.

R.W. Milliken was an Irish visual artist who took influence from the artistry of John Cyril Harrison, among other bird artists, and worked mainly in watercolor. As an ornithologist, he was president of the Northern Ireland Ornithology Society and a member of the Northern Ireland Birds Record Committee.



Lot 41. PETERSON, Roger Tory (American, 1908-1996).
Golden Pheasant.
Gouache, watercolor and pencil on paperboard.
Signed lower right: "RTPeterson".
30" x 20" sheet, 33 1/2" x 23 1/2" framed.

Retail: \$35,000. Estimate: \$18,000 - 30,000.

Reserve: \$9,000.

Provenance: The artist; Virginia Marie Peterson, wife of the above; By descent to the present owners.



Lot 42. PAILLOU, Peter (British, c.1720-1790).
[Duck]. Watercolor on paper. ca. 1750.
21 1/2" x 15" sheet, 24" x 31" framed.

Retail: \$8,000. Estimate: \$4,000 - 7,000. **Reserve: \$2,000.**

Little is known of Peter Paillou's early career, but he gained a reputation in the 18th century as a natural history painter and illustrator. He was employed by two leading naturalists and antiquarians, Taylor White (1701-1772) and Thomas Pennant (1726-1798). He illustrated the latter's *British Zoology* and decorated the hall at Downing, Pennant's house in Flintshire, with several pictures of birds and animals, four of which represented the year's seasons. He also contributed plates to *A Natural History of Birds* by George Edwards, 1740-50.



Lot 43. PAILLOU, Peter (British, c.1720-1790).
The Rock Pigeon (Columba Livia).
Watercolor and gouache over pencil on laid paper watermarked "VI". ca. 1750. 13 1/2" x 19 1/2" sheet, 19 1/2" x 25 1/2" framed.

Retail: \$14,000. Estimate: \$5,000 - 10,000. **Reserve: \$2,500.**



Lot 44. STOKVISCH, Hendrik (Belgian, 1768-1823).

A Partridge.

Oil on paper.

5 ¼" x 6 ¾" sheet.

Retail: \$9,000. Estimate: \$4,000 - 8,000.

Reserve: \$2,000.

Provenance: De Groot Gerrit (according to an inscription on the back of the frame). A. de Witte (according to an inscription on the back of the frame). Private Collection, Brussels.

Born in Louvain, Hendrik Stokvisch moved to Amsterdam at seventeen to learn painting and drawing under J.C. Schulz. There he studied his natural history subjects from life.



Lot 45. RIDER, Alexander (American, fl. 1810-1825).

Study for Plate 22: "Condor".

from Charles Lucien Bonaparte's *American Ornithology* (Philadelphia, 1825-1833), Volume 4.

Pencil and watercolor on paper.

Ca. 1830-1833.

14" x 10 ¾" sheet, 24 ¼" x 20 ½" framed.

Retail: \$125,000. Estimate: \$50,000 - 100,000.

Reserve: \$30,000.

Provenance: Dr. Evan Morton Evans (1870-1955); Daniel Webster Evans (1907-1966).



Lot 46. KEULEMANS, Johannes Gerardus (Dutch, 1842-1912).

The Tail-less Tenrec (Centetes ecaudatus).

Original watercolor likely for Alfred Grandider's *L'Histoire Physique, Naturelle et Politique de Madagascar* [Physical, Natural and Political History of Madagascar] Paris: 1875-1897.

Watercolor and pencil on paper.

Signed lower right: "J.G. Keulemans".

Ca. 1880. 8" x 10" visible.

Retail: \$4,500. Estimate: \$3,000 - 4,000. **Reserve: \$2,000.**



Lot 47. SCHOUMAN, Aert (Dutch, 1710-1792).

A Resting Cow.

Black chalk framing lines.

Signed and dated lower right recto: "A. Schouman 1765"

Inscribed verso: "N 1886".

6 ¼" x 9 ⅛" sheet, 16 ½" x 20" framed.

Retail: \$9,000. Estimate: \$3,000 - 6,000. **Reserve: \$1,500.**

Provenance: Property of a European family trust.



Lot 48. BOLTON, James (British, 1735-1799).
Double Carnation Hyacinth & Violet Coloured Cyclamen.
 Watercolor and pencil on vellum.
 Signed 'J.B'.
 Affix to laid paper with the note: 'W: Edwards desires Madam Adamsons acceptance of these Drawings done at Halifax Yorkshire' and dated 1791. 7 ¾" x 5 ¾" vellum.
 Retail: \$19,000. Estimate: \$6,000 - 12,000.
Reserve: \$4,000.



Lot 49. BOLTON, James (British, 1735-1799).
[Cyclamen and Cowry Shell].
 [Cyclamen and Cowry Shell].
 Watercolor and pencil on laid paper.
 Signed 'James Bolton 1783'.
 17" x 10 ½" sheet.
 Retail: \$18,000. Estimate: \$6,000 - 12,000.
Reserve: \$4,000.



Lot 50. DE LONGPRE, Raoul Maucherat (French, 1843-1911).
Bouquet with Roses and Lilacs.
 Watercolor and gouache on paper.
 Signed lower right: "R M Longpre".
 14 ¼" x 10 ¼" sheet, 24 ½" x 20 ¾" framed.
 Retail: \$12,000. Estimate: \$5,000 - 10,000.
Reserve: \$2,500.



Lot 51. DUTCH SCHOOL (17th Century).
Purple Iris.
 Gouache, within brown ink framing lines, on vellum.
 4 ¼" x 5 ½" vellum, 14" x 12 ¼" framed.
 Retail: \$27,500. Estimate: \$10,000 - 20,000.
Reserve: \$5,000.

Lot 52. FISCHER, Johann Thomas (German, 1603-1685).
Parrot Tulips with a Spider's Web.
 Watercolor on parchment.
 Signed with monogram and dated on lower stems: "JF/ 1653"
 11 $\frac{3}{16}$ " x 7" parchment, 23 $\frac{1}{2}$ " x 19 $\frac{1}{2}$ " framed.
 Retail: \$35,000. Estimate: \$15,000 - 30,000.
Reserve: \$7,500.

Provenance: Count Preysing, Munich; Paul Drey Gallery, New York.

Exhibitions: The New York Botanical Garden, New York, *Buried Treasures: The Nature and Art of Bulbs*, October 7, 2006 - January 7, 2006.

The delicacy of this study of seven parrot tulips cannot be overstated, or fully grasped except on close, careful examination. The delicate veins of red running through the white petals lead the flowers to emerge from the background with luminosity. Fischer's mastery of the medium is also visible in his ability to modulate delicate hues to convey depth, as visible in the stems of the tulips. Fischer depicts the intriguing detail of a wispy, transparent spider web spun around the stems. This subtle and lovely creative addition makes what might have been perceived as a straightforward botanical study into an artful, imaginative rendering.



Lot 53. FRENCH SCHOOL (17th Century).
An Allegorical Garden.
 Gouache on vellum with a contemporary frame.
 18 $\frac{1}{2}$ " x 18 $\frac{1}{4}$ " sheet, 23 $\frac{1}{4}$ " x 23 $\frac{1}{8}$ " framed.
 Retail: \$85,000. Estimate: \$40,000 - 60,000.
Reserve: \$25,000.



Lot 54. HUYSUM, Jan Van (Dutch, 1682-1749).
Still-life of Roses, Carnations and Other Flowers on a Table.
 Watercolor and pencil on paper.
 Initialed lower right: "J. V.H."
 ca. 1730.
 15 $\frac{1}{2}$ " x 11 $\frac{3}{4}$ " sheet, 26 x 22 framed.
 Retail: \$30,000. Estimate: \$15,000 - 25,000.
Reserve: \$7,500.



Lot 55. MICHELSEN, Gustav (Danish, 1800-1846). *Bouquet of Peony, Hyacinth and Carnation.* Watercolor on paper. Verso window shows signature "Michelsen 1820". 8" x 6 3/8" sheet, 15 3/4" x 14 1/8" framed. Retail: \$25,000. Estimate: \$15,000 - 22,000. **Reserve: \$12,000.**



Lot 56. RIOCREUX, Alfred (French, 1820-1912). *Magnolia Lenné.* Watercolor and pencil on paper. Signed and inscribed: "A.Rx, Magnolia Lainé". Inscription lower center: "Bon a reproduire / 27 avril 66 / J.a. Zane Sèvres, 1866". 11" x 8" sheet, 20 3/4" x 17" framed. Retail: \$18,000. Estimate: \$10,000 - 15,000. **Reserve: \$7,000.**

Lot 57, Property of a South American Collector.



Lot 57. SINCLAIR, Isabella McHutchinson (c. 1840-1890). *Indigenous Flowers of the Hawaiian Islands* London: Sampson Low, Marston, Searle, and Rivington, 1885. First Edition.

Estimate: \$3,000 - 5,000. **Reserve: \$1,500.**
 Comparables: Bonhams, 2009 - \$19,520; Sotheby's, 2006 - \$6,000; Christie's, 2014 - \$2,750.

Folio (14 1/2" x 10 3/4") 44 Chromolithographed plates after Sinclair by the Leighton Brothers. Original green beveled cloth, gilt. Both covers detached, interior bright and mostly clean.

According to H. St. John in *Pacific Science*, 1954: "This is the first book with colour pictures of Hawaiian flowering plants... Even today it has more colour plates of Hawaiian plants than any other book." "Published in the form of a typical Victorian 'floral album,' Isabella Sinclair's series of watercolors was by far the most luxurious guide to Hawaiian flora to have been published up to that time, and FOR SUMPTUOUSNESS IT REMAINS UNSURPASSED" (Don R. Severson, Michael D. Horikawa and Jennifer Saville, *Finding Paradise: Island Art in Private Collections, Honolulu*, 2002, p. 178). *Great Flower Books*, p.139; Nissen BBI 1848



Lot 58. AUDUBON, John James (1785-1851). *The Birds of America, from Drawings made in the United States and Their Territories*. New York: J. J. Audubon; Philadelphia: J. B. Chevalier [1839-]1840-1844. First octavo edition.

Retail: \$90,000. Estimate: \$50,000 - 80,000. **Reserve: \$40,000.**
 Comparables: Christie's, 2005 - \$132,000; Sotheby's, 2021 - \$60,480.

7 volumes, 8vo (10" x 6 1/2"). 500 handcolored lithographed plates after Audubon by W. E. Hitchcock, R. Trembly, and others, printed and colored by J. T. Bowen, numerous wood-engraved text illustrations (some full-page), half-titles and subscribers' lists in each volume, moderate foxing and scattered spotting but most pronounced in vol. 2. Half blue morocco by Stikeman over blue marbled boards, spines in 6 compartments lettered gilt, marbled endpapers, edges gilt; spines faded to brown, joints rubbed.

After completing the double-elephant folio edition at great expense in England, Audubon returned to the United States and used the Philadelphia firm of Bowen to produce a more profitable octavo version under the supervision of his sons. The subscription price was \$100, making it an expensive but appealing work for affluent individuals and well-endowed institutions. It enjoyed tremendous commercial success, with the initial offering attracting over 700 subscribers, and firmly established Audubon's reputation as the greatest ornithologist of his time. The octavo edition added 65 new images to the original plate count of the double-elephant folio, bringing the total to 500.

Ayer/Zimmer, p. 22; Bennett, p. 5; McGill/Wood p. 208; Nissen IVB 51; Reese, *American Color Plate Books* 34; Sabin 2364; cf. Tyler, *Audubon's Great National Work*.

THORNTON'S MASTERPIECE



Lot 59. THORNTON, Robert John (1768-1837). *Temple of Flora, or Garden of the Botanist, Poet, painter, and Philosopher*. London: [For the author], 1812. First quarto edition.

Retail: \$27,000. Estimate: \$15,000 - 25,000. **Reserve: \$12,000.**
 Comparables: Arader Auctions, 2017 - \$13,420; Christie's 2011 - \$11,488.

Royal quarto in 2s (14 7/8" x 11 3/8"). Aquatint frontispiece by Cosway after Burke, engraved title over two leaves with vignette headpiece to first leaf by Tomkins after Burney; 2 stipple engravings by Russell and Opie after Maddocks, and Reinagle after Bartolozzi and Landseer, 28 hand-colored aquatints by Pether, Thornton, Edwards, Reinagle & Henderson, after drawings by Dunkarten, Roffe, Gaugain, Quilley, Maddox, Burk, Maddan and Stadler (lightly browned throughout, occasional spotting and thumbing). Contemporary green straight-grained morocco, elaborately decorated in gilt and blind, all edges gilt (over-opened, extremities worn with some loss).

With the additional plate "Artichoke Protea" by Quilley after Henderson, not included in the original folio edition of 1807 published under the title "New Illustrations of the Sexual System of Linnaeus". Other images are reduced copies of those in the folio edition.

Robert John Thornton (ca. 1768-1837) conceived a grand project in three parts: a dissertation on the sexual reproductive cycle of plates; an explanation of Linnaeus's plant system, lavishly illustrated with botanical plates and portraits of botanists; and The Temple of Flora which was to have no fewer than seventy large plates of exotic plant species arranged according to the classification system of Linnaeus. The folio edition incurred an enormous financial loss. Thornton secured a lottery by Act of Parliament (51 George III, cap. 103) in 1811 to raise funds. The top prize was the original paintings, and the quarto edition of the Temple was included as one of the lesser prizes.

Lot 60. WILLIS, Nathaniel Parker (1806-1867)
& BARTLETT, William Henry (1809-1854).

American Scenery.

London: George Virtue, 1840. First edition.

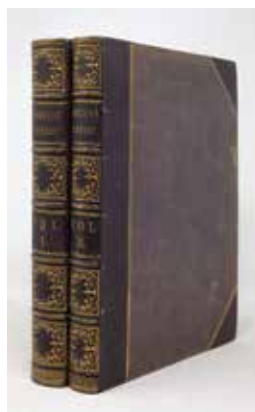
Retail: \$4,500. Estimate: \$2,000 - 4,000.

Comparable: Sotheby's, 2010 - \$4,375.

Reserve: \$1,500.

2 volumes. 4to., (10 ¾" x 8 ¼"). Engraved frontispiece portrait of Bartlett, additional engraved title-page in each volume, and 117 engraved plates after W. H. Bartlett (some mostly marginal spotting and a few pale stains, some plates misbound), engraved map of the "Northeastern part of the United States" with Willis's route outlined in red bound at the end of volume II. Contemporary half maroon morocco, gilt (extremities rubbed, cloth a bit faded).

Originally published in 30 parts. Bartlett visited America a number of times and illustrated this work and "Canadian Scenery" for Willis. Made during Bartlett's 1835 journey through the northeastern states of the USA. They show in a rather romantic manner the most famous and picturesque sites of the country, such as buildings, towns and scenery, before industrialisation: i.a. Niagara Falls, Washington's tomb, Sing-Sing, Boston, New York Bay, Yale College, the White House, the Capitol, etc.



Lot 61. *The Playing Rules of Lawn Tennis, as adopted by the United States National Lawn Tennis Association.* New York: Peck & Snyder, 1886.

Retail: \$3,500. Estimate: \$2,000 - 3,000. **Reserve: \$1,500.**

12mo., (5 ¾" x 3 ¾"). Illustrated throughout with diagrams, engravings of tennis rackets and balls, advertisements at end illustrating tennis poles, nets, shoes, courtmarkers, etc. Original blue printed paper wrappers (a few pale stains, corners chipped); preserved in a tan calf-backed clamshell box.

Provenance: with the ownership inscription of Harold Meeks dated 1888 on the front cover.

Early edition, preceded by "Playing Rules of the Popular Games of Archery and Lawn Tennis" also published by Peck & Snyder in 1878, and with its current title in 1884. In this edition the rules for Equestrian Polo and Field Croquet are included at the very end. James Dwight and his second cousin Fred Sears played "what Dwight believed to be the first game of lawn tennis in America at his uncle William Appleton's property at Nahant, Massachusetts, in 1874 or 1875 (Dwight claimed one or the other year at different times, leaving the actual year open to debate). In 1876, 1877, and 1878, Dwight organized handicap round robin tournaments at Nahant. Playing with a scratch handicap, he won the first two tournaments. The 1877 event marked the first appearance of future champion Dick Sears, Fred's half brother... During September 1880 he and Dick Sears entered a "Championship of the United States" at Staten Island, New York, but they withdrew from the singles event after Dwight futilely protested that the balls were under regulation size and weight. Dwight and Sears then lost their second round doubles match.



"THE EARLIEST ACCURATE MAP OF THE EASTERN SEABOARD OF THE CENTRAL PLAINS" (Ehrenberg)

Lot 62. NICOLLET, Joseph N. (1786-1843, also called Jean)
& EMORY, William Hensley (1811-1887).

28th Congress, 2nd Session. January 11th, 1845.

Washington, D.C.: Blair and Rives, 1845. First edition, House Issue.

Retail: \$15,000. Estimate: \$8,000 - 12,000.

Reserve: \$4,000.

8vo., (8 ¾" x 5 ¾" inches). Fine large engraved folding map of the Hydrological Basin of the Upper Mississippi by Emory after Nicollet (title-page top outer corner renewed). Modern half red calf gilt.

Nicollet, a French-born scientist and would-be astronomer, arrived in New Orleans in 1832 and soon became intimate with the wealthy Chouteau family, who were preeminent in controlling the fur trade of the Mississippi Valley, with operations extending northward into the Illinois country. They persuaded him to join them in expeditions they were sending into the St. Louis region. Nicollet embarked on the first of these explorations in 1836, searching for the source of the Mississippi River. In this quest he came into contact with the Chippewa Indians and reported his findings on their language, customs, religious practices, relations with other tribes, and attitudes toward American settlers to U.S. Army officers stationed at Fort Snelling, at the juncture of the Mississippi and Minnesota rivers, the site of present-day Minneapolis. Nicollet impressed his new American friends in the U.S. Army. As a result of their recommendations Secretary of War Joel Poinsett invited him to Washington, D.C., and gave him various assignments. One of these in 1838 was a commission to conduct a survey of the upper Missouri country, accompanied by Lieutenant John C. Frémont. In the following year he continued the survey by steamboat and also explored the sources of the Red River and the North Dakota country. When he returned to Washington, D.C., in 1840, he prepared some of the first accurate maps of the region northwest of the Mississippi River. In these projects he worked closely with the eminent Swiss émigré Ferdinand Hassler, chief of the U.S. Coast Survey...



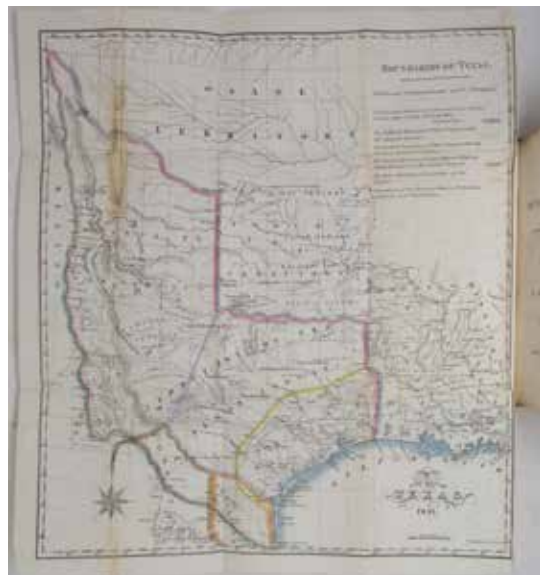
FIRST EDITION OF "THE MOST VITRIOLIC DENUNCIATION OF THE REPUBLIC OF TEXAS"

Lot 63. MAILLARD, Nicholas Doran (19th Century). *The History of the Republic of Texas, from the Discovery of the Country to the Present Time.* London: Smith, Elder and Co., 1842. First Edition.

Retail: \$13,500. Estimate: \$7,000 - 10,000. **Reserve: \$4,500.**
Comparable: Hidmann Auctions, 2013 - \$5,000.

8vo (8 ½" x 5 ¼"). Lithographed folding map "Boundaries of Texas. Political, Conventional, and Natural" handcolored in outline; map laid down on archival tissue, repair to one fold separation. Modern half biscuit calf over marbled boards, black lettering piece.

A compendium of everything bad that could be claimed about Texas and Texans of those times" (Jenkins). Unlike the Rev. Newell, Maillard uncharitably denounces Texas as "a country filled with habitual liars, drunkards, blasphemers, and slanderers, sanguinary gamblers and cold-blooded assassins" p.206. His diatribes extend to Stephen Austin, whom he characterizes as "the prince of hypocrites" (p. 30) and to James Bowie as a "reckless drunkard" with a "debauched and sanguinary mind" (pp. 103-104). A London barrister, Maillard arrived in Texas in 1839 where he briefly practiced law and co-edited a newspaper. Although drawn from original material, the first third of the book presents an extremely biased and anti-Texan account of the Revolution. It is of little wonder that he attacks Kennedy's pro-Texas history throughout. "TEXAS CUT DOWN TO SIZE-A DIFFICULT FEAT EVEN IN 1842" (Graff).



Lot 64. PARKER, Amos A. (1791-1893). *Trip to the West and Texas. Comprising a Journey of Eight Thousand Miles, through New-York, Michigan, Illinois, Missouri, Louisiana and Texas, in the Autumn and Winter of 1834-5.* Concord, N.H.: William White; Boston: Benjamin B. Mussey, 1836. Second Edition.

Retail: \$8,750. Estimate: \$5,000 - 8,000. **Reserve: \$3,500.**
Comparable: Dorothy Sloan Auctions, 2007 - \$8,812.

8vo., (7" x 4 ¼"). Fine folding engraved "New Map of Texas, with the contiguous American & Mexican States" by J. H. Young. Philadelphia: S. Augustus Mitchell, 1836 (12 ½" x 15" to the neat line), on banknote paper, with original hand-colour in full. Wood-engraved frontispiece "Prairie on Fire" and 2 plates (some occasionally heavy spotting throughout). Original blue cloth, the covers decorated in blind panels, the spine with the flag of Texas in gilt (spine faded, covers a bit marked, new endpapers).

Provenance: with the ink library stamp of the Tejas club on the front free endpaper.

'Better' edition with additional map, plate and text., first published the previous year. Including 56-pages of a "Sketch of the Texian Revolution" (one of the earliest accounts of the Texas Revolution in a book), which is described as two separate campaigns, ending with the capture of Santa Anna, and the declaration of Texan independence. The map by Young is the first edition, second issue, dated 1836 in the title, copyrighted 1835, and is one of the earliest printed maps of Texas during its period as a Republic. Texas is depicted divided into the various land grants parceled out by the Mexican state of Coahuila y Tejas and is smaller than the area claimed by the Republic after independence, with the Nueces River as the southern boundary. All territory north of the Red River is attached to "Santa Fe formerly New Mexico". Three text inserts are titled "Remarks on Texas", "Land Grants", and "Rivers of Texas" and include statistics and information meant to inspire emigration to the region.



Lot 65. JOUTEL, Henri (c. 1643 - 1725). *A Journal of the Last Voyage Perform'd by Monsr. de la Salle, to the Gulph of Mexico, To find Out the Mouth of the Missisipi [sic] River.* London: Printed for A. Bell & B. Lintott, 1714. First edition, in English.

Retail: \$15,000. Estimate: \$10,000 - 12,000. **Reserve: \$9,000.**

Comparables: Christie's, 2007 - \$15,000; Sotheby's, 2007 - \$12,500.

Octavo (7 ½" x 4 ½"): title within a double-ruled border, large folding map of the "County of Louisiana and . River Missisipi in North America". Bound in later half brown morocco over marbled boards. On the spine, five raised bands. Title gilt to the second panel, author gilt to fourth. Top edge of the text-block gilt. Rubbing to the extremities, and wear to the fore-corners. Text-block a little tanned overall. Tanning and some closed tears to the map. Perforated stamp of the Chicago Historical Society on the lower fore-edge of the title page and to A7 (pp. ix-x). XIXc bookseller ticket of John R. Jones, Richmond (Virginia) to the lower fore-edge of the verso of the title-page (which must have been affixed after the CHS's deaccession). Typed deaccession label of CHS to the rear paste-down.

René-Robert Cavelier, Sieur de La Salle (Englished to "Monsr. de la Sale") canoed down the Mississippi river in 1682, and claimed for France its basin -- La Louisiane, the land of Louis (XIV) -- on the Gulf of Mexico. He returned in 1684, and that is the voyage described in this volume. It did not go well; La Salle landed in Texas, failed to find the Mississippi and was killed by his men, who mutinied. Joutel led the expedition after La Salle's death, and his journal provides perceptive first-hand accounting of their onward journey into Canada. The accompanying map contains "the first accurate delineation" of the Mississippi (Howes). The English translation (first edition: Paris, 1713) surpasses the original for its inclusion of the terms of the grant of Louisiana to Crozat. Alden & Landis 714/40; Church 859; Clark, *Old South* 1:14; Field 808; Graff 2252; Howes J 266; Sabin 36762; Streeter sale 1:112; Wagner, *Spanish Southwest* 79b.



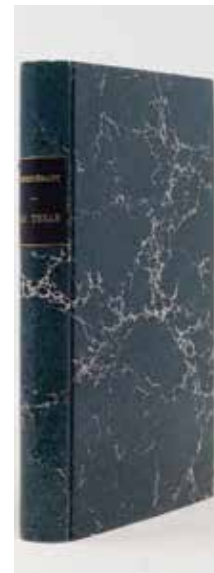
Lot 66. CONSIDERANT, Victor (1808-1893). *Au Texas*. Brussels: Société de Colonisation and Paris: Librairie Phalanstérienne, 1855. Second edition (first published the previous year).

Retail: \$2,250. Estimate: \$1,200 - 2,000. **Reserve: \$800.**
Comparable: PBA Auctions, 2008 - \$2,280.

12mo., (7 1/2" x 5 1/4"). Fine folding lithographed map of Texas after J. H. Colton (1800-1893) (short repaired tear on verso), folding table. Modern marbled paper over boards with black morocco lettering piece on spine, original publisher's yellow paper wrappers bound in.

This account of the renowned French Socialist philosopher's sojourn in Texas led directly to his founding of the short-lived commune near Dallas called La Réunion, active in the years 1855-57. A disciple of Charles Fourier, Considerant edited the journals *La Phalange* and *La Phalanstère*. After a failed insurrection against Louis Napoleon, he was forced to go into exile in Belgium in 1849. Albert Brisbane, the American utopian socialist who founded several phalanx communes throughout the United States, invited Considerant to Texas, where he collaborated with Jean-Baptiste Godin to found La Réunion.

The very nice map of Texas is after J. H. Colton. Between 1831 and 1890, the Colton firm dominated American map publishing, and their atlases were the finest produced in the U.S. during the nineteenth century.



Lot 67. CRAMER, Zadock (1773-1813). *The Navigator, containing Directions for Navigating the Monongahela, Allegheny, Ohio and Mississippi Rivers...* Pittsburgh: Cramer, Spear and Eichbaum, 1817. Ninth edition, first published in 1802, with the first account of the Lewis and Clark expedition included in the edition of 1808 (the sixth edition).

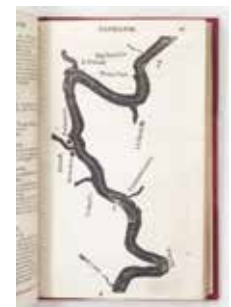
Retail: \$9,000. Estimate: \$5,000 - 8,000. **Reserve: \$4,000.**
Comparable: Christie's, 2011 - \$7,800.

8vo. (6 1/2" x 4"). 28 full-page woodcut maps; with "The Following Corrections" appearing at page 60 replacing the original. Modern half red morocco, gilt. Provenance: with the ink library stamp of the Free Public Library of New Bedford on the title-page, and on page 25.

The "Advertisement" to the 1811 edition (the eighth) describes the *Navigator* as being "an useful and necessary guide to those who navigate or trade on the rivers of which it treats much pains have been taken to revise, correct and enlarge it throughout; to do this satisfactorily, we have had the assistance of several of the most eminent pilots and navigators, and the use of late manuscript journals of gentlemen of observation, to whom we present our compliments for their aid and politeness. At a very considerable expense, the maps of the Ohio and Mississippi rivers have been added; and we flatter ourselves with the hope that they will be found as useful to the navigator as they have been troublesome to us. the account of the Missouri and Columbia rivers, as traversed by Captains Lewis and Clark, under the directions of the president of the United States, though but a brief view of that interesting voyage, we hope will be found entertaining. It has been collected from the letters of Captain Clark and other publications since the return of the party".

Howes C 855; Sabin 17386.

"MOST WIDELY USED GUIDE TO WESTERN WATERS IN THE EARLY PERIOD".



Lot 68. DOMENECH, Emmanuel (1825-1903). *Journal D'un Missionnaire au Texas et au Mexique. 1846-1852*. Paris: Librairie de Gaume Freres, 1857. First edition.

Retail: \$400. Estimate: \$250 - 350. **Reserve: \$200.**

8vo., (8 3/4" x 5 1/2"). Half-title (pale waterstain throughout). Fine large folding engraved map: "Carte du Texas pour les Missions et Voyages de l'Abbe em Domenech", with original hand-colour in part, and routes outlined colour. Original publisher's printed paper wrappers (one or two small chips and tears).

Provenance: early ownership inscription of "Mlle Afathe de St. Mau..." on the front cover.

"In the spring of 1846, before completing his seminary studies and when not yet twenty years of age, he left France in response to an urgent appeal for missionaries to help develop the Church in the wilds of Texas, then rapidly filling up with American and European immigration. He went first to St. Louis, where he spent two years completing his theological course, studying English and German, and gathering knowledge of missionary requirements. In May, 1848, he was assigned to duty at the new German settlement of Castroville in Texas, from which he was transferred later to Brownsville. The war with Mexico was just concluded; raiding bands of Mexicans and rangers were ravaging on both sides of the Rio Grande, while outlaws from the border States and almost equally lawless discharged soldiers filled the new towns, and hostile Indians hovered constantly in the background. A cholera epidemic added its horrors. Nevertheless, the young priest went bravely to work with such energy that he soon became an efficient power for good throughout all Southern Texas. In 1850 he visited Europe and was received by the pope. Returning to Texas, he continued in the mission field two years longer, when he returned to France with health broken and was appointed titular canon of Montpellier. When the French troops were dispatched to Mexico in 1861 he was selected to accompany the expedition as almoner to the army and chaplain to the Emperor Maximilian. After the return to France he devoted his remaining years to European travel, study, and writing, and the exercise of his ecclesiastical functions. In 1882-3 he again visited America" (Catholic Encyclopedia online). Graff 1119; Howes D 408; Palau 75066; Sabin 20549



FIRST EDITION OF ONE OF THE "EARLIEST BOOKS PUBLISHED ABOUT TEXAS AFTER IT BECAME A REPUBLIC" (Jenkins)

Lot 69. NEWELL, Reverend Chester (1803-1892).

History of the Revolution in Texas, particularly of the war of 1835 & 36; Together with the Latest Geographical, Topographical, and Statistical Accounts of the Country, from the most Authentic Sources. Also, an Appendix.

New York: Wiley & Putnam, 1838. First Edition.

Retail: \$7,500. Estimate: \$5,000 - 7,000. **Reserve: \$4,000.**

Comparable: Heritage Auctions, 2015 - \$5,750.

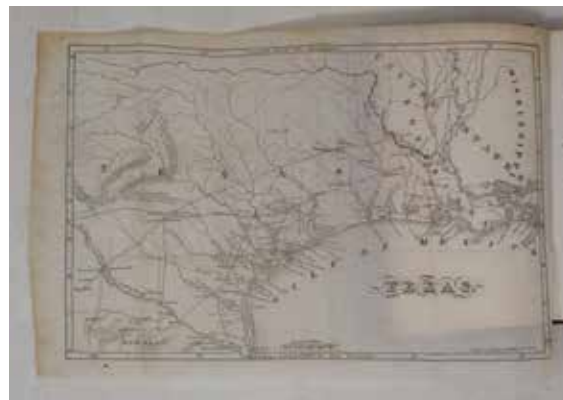
12mo (7 ½" x 4 ½") Lithographed folding map on rice paper; occasional light scattered foxing. Publisher's finely textured black cloth blocked in blind, spine lettered gilt; covers lightly stained, board edges a bit bumped, head of spine frayed. Brown cloth chemise, quarter brown morocco slipcase.

Issued with the map undated and the dedication on p. [iii]. Newell disputes the rumors that the population of Texas chiefly comprises "criminals, of insolvent and fraudulent debtors, of outlaws, and bad characters of every description"-remarking charitably that "only a large part of the people of Texas are of the character described. Well, admitting they are, should the entire population and country be then reviled?" (p.190). Decidedly a pro-Texan, Newell dedicated the volume to William Campbell Preston, Senator representing South Carolina, famous for having introduced in 1836 a resolution favoring annexation of Texas.

"ONE OF THE RARE AND RELIABLE BOOKS ON TEXAS" (Raines). Newell, an Episcopalian missionary from Massachusetts, spent 1837 in Texas for health reasons. His account begins with a summary of Mexican history (1821-1825), followed by an outline of that of Texas (1832-1835). The events of 1836, including the defeat of the Alamo and the later capture of Santa Anna, are drawn from both Texan and Mexican accounts. "Newell was one of the first to seduce Sam Houston into giving particulars of the campaign" (Jenkins). Also included are the eyewitness accounts of the fall of the Alamo by Col. Travis's manservant, who was the only male survivor of the battle, as well as by "Ben," Santa Anna's cook.

PROVENANCE: T. F. Harwood (shelf label and pencil inscription on front free endpaper dated 17 November 1924).

Clark, *Old South III*:215; Graff 3010; Howes N 115; Jenkins, *Basic Texas Books* 151A; Raines, p. 154; Streeter, *Texas II*: 1318.



Lot 70. LOPEZ, Tomas de Vargas Machuca (1730-1802).

Atlas Geographico; del Reyno de Espana, e Islas Adyacentes, con una Breve Description de sus Provincias. Dispuesto, para la utilidad publica.

Madrid: Calle de Atocha frente a ls plazuela del Angel, No.1.qto.2o, [ca 1770].

Retail: \$13,500. Estimate: \$9,000 - 12,000. **Reserve: \$5,500.**

Comparable: Sotheby's, 2006 - 4,080 GBP.

16mo., (4 ½" x 3 ¼"). Double-page engraved allegorical title-page, engraved 'Prologo', general map of Spain, full-page circular map of Madrid with key printed in red and black, and 23 further double-page maps and views, most with original hand-colour in outline. Bound in contemporary tree calf, the smooth spine gilt-ruled in compartments. First published in 1757 without the maps of Portugal, which reflect Spain's continued interest in conquering Portugal which in the 18th-century began in earnest with the invasion of 1762. This edition printed using the same, but altered various plates of the first edition: 3, 6 - 27.

Lopez was one of Spain's most renowned cartographers. He spent his early years in Paris as the pupil of the great French cartographer Jean-Baptiste Bourguignon d'Anville, but in 1760 was recalled to Spain and became Royal Geographer to King Charles III, with the task of mapping all the different regions of Spain. In preparation for such a great task he sent out a questionnaire to parishes, asking them for information on their local area. These regional maps were intended to accompany his ambitious work "Diccionario Geográfico-Histórico de España", which was never completed.



Lot 71. ELLICOTT, Andrew (1754-1820).

The Journal of Andrew Ellicott for determining the boundary between the United States and the Possessions of his Catholic Majesty in America...

Philadelphia: Thomas Dobson, 1803. First edition.

Retail: \$9,500. Estimate: \$7,000 - 9,000. **Reserve: \$6,000.**

Comparable: Bonham's, 2014 - \$6,875.

4to., (11" x 8 ½"). Letterpress title-page, Errata leaf at end. 14 folding plates and maps (some browning and offsetting, one or two short separations along plate marks). Modern calf backed marbled paper boards antique.

Provenance: With the ownership inscription at the head of the title-page and marginal notes of W.U.B. Thomas, dated 1807; ink library stamps removed from the foot of the title-page, the head of the preface, and the first page of text.

Ellicott's career as a surveyor "began in 1784 with his appointment as one of the commissioners for Virginia to clarify the boundaries between that state and Pennsylvania. He was commissioned with David Rittenhouse and Andrew Porter to define the western boundary of Pennsylvania, and in 1787 he completed a survey of the state's northern boundary. In 1789 Ellicott moved his family to Philadelphia and was employed by the federal government to survey the Presque' Isle triangle, the tract north of the forty-second parallel and south of Lake Erie, a project that occupied him into 1791. In early 1796 President Washington commissioned him to undertake the survey of the boundary between the United States and the Spanish territory of Florida in accordance with a treaty with Spain. Ellicott kept a detailed account of all that came to his notice and obstruction he encountered from the Spanish. After completing the survey in the spring of 1800 he submitted his report to the State Department. Because President John Adams withheld it from the Senate, however, no appropriation was made for Ellicott's compensation, which left him in serious financial difficulties. After publication of his report in Philadelphia in 1803, he rose to considerable prominence in the world of science" (Silvio A. Bedini for ADNB).



Lot 72. [WELLS, Henry Laurenz (compiler)].

History of Nevada County California with Illustrations Descriptive of its Scenery, Residences, Public Buildings, Fine Blocks, and Manufactories.

From Original Sketches by Artisans of the Highest Ability.

Oakland: Thompson & West, 1880. First edition.

Retail: \$5,000. Estimate: \$3,000 - 4,000. **Reserve: \$2,000.**

Oblong folio (11" x 14 1/4"). 83 lithographed plates (one counted as part of pagination; several double-page; several with multiple images; "Donner Party" leaf with image on recto and verso), fine hand-colored lithographed map: "Map of California, Nevada, Utah, and Arizona... 1880" (9 3/4" x 12 1/2") (preliminaries wrinkled and with a few closed tears). Original black cloth stamped in gilt and blind (rebacked in black morocco).

Provenance: Slightly later ink and pencil ownership inscriptions of Emily M. H. Jeffery of Sacramento on front pastedown, front flyleaf, title, and in blank margin of map.

An unusually attractive copy. Some of the handsome lithographs were executed by C. L. Smith & Company. The history includes information and illustrations of gold mining in the area. Not only are there illustrations of various current mining operations, but Chapters XLIX to LIX (pp. 170-206) give extensive information on older mines still operating in Nevada County and on mining operations in use at the time. This section includes historical information on the early development of area mining during the Gold Rush. Chapter XV (pp. 40-46) gives a history of the discovery of gold in California. The text at pp. 38-40 and the two accompanying plates concern the Donner Party. The plate entitled "Arrival of the Relief Party" is especially dramatic, showing two figures crawling from beneath their snow-covered shelters.



Lot 73. WILLIAMSON, Captain Thomas (1790-1815) and Samuel HOWITT (1765-1822). *Oriental Field Sports; being a complete, detailed, and accurate description of the Wild Sports of the East.* London: W. Bulmer for E. Orme and B. Crosby, 1808. First quarto edition.

Retail: \$4,800. Estimate: \$3,000 - 4,500. **Reserve: \$2,000.**
Comparable: Christie's, 2000 - \$2,580.

2 volumes, 4to., (11 3/8" x 9"). Additional lithographed title-pages, dedication to George III, and 40 fine tinted aquatint plates by J. Clark after Samuel Howett (some occasional, mostly marginal spotting). Contemporary red morocco elaborately gilt, all edges gilt (minor rubbing to joints and edges).

Provenance: with the bookplates of Edward Francis Hutton on the front paste-down of each volume; with the small bookplate of Wolfgang A. Herz on the front paste-down of each volume, his sale "Important Voyages and Travels"; Christies 9 December 2009, lot 159.

An early issue with plates and text watermarked 1805 and 1806, and an attractive copy. "Being a Complete, Detailed, and Accurate Description of the Wild Sports of the East, and Exhibiting, in a Novel and interesting Manner, the Natural History of the Elephant, the Tiger, the Rhinoceros..." (subtitle). "A self-taught artist, he turned professional when financial difficulties forced him to earn a living. He drew on his enthusiasm and knowledge as a sportsman and produced sporting and natural history paintings, etchings, and illustrations. He sometimes worked in oils but more frequently in watercolours, and he was an accomplished etcher" (Ruth Cohn for DNB). *Abbey Travel* 431; *Tooley* 510.



Lot 74. DU HALDE, Jean Baptiste (1674-1743).

Description géographique, historique, chronologique, politique, et physique de l'Empire de la Chine et de la Tartarie Chinoise...

The Hague: Henri Scheurleer, 1736. First quarto edition.

Retail: \$12,000. Estimate: \$9,000 - 11,000. **Reserve: \$8,000.**
Comparable: Pandolfini Auctions, 2018 - Euro 10,000.

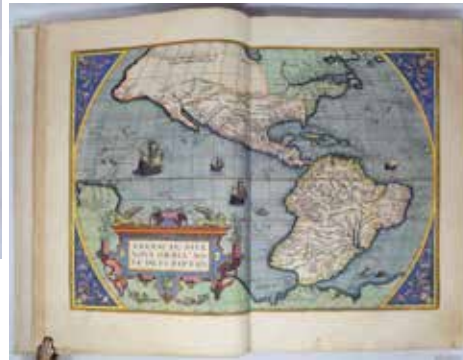
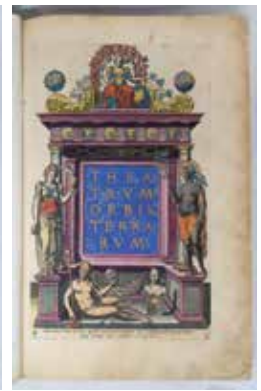
4 volumes, 4to (9 3/4" x 7 3/4"). Title pages printed in red and black with engraved publisher's devices, engraved folding map of Canton (early tape repairs), 52 engraved plates (some folding), including a number of city plans, 5 engraved vignette head-pieces, 6 diagrams in the text. Contemporary mottled calf, spines gilt in compartments, red and black morocco lettering-pieces (extremities scuffed).

Provenance: 19th century ownership inscription of Julie Mestral-Tavel on the recto of the first blank in each volume, except volume two, which is lacking the first blank and has the slightly later ownership inscription of Julie Mestral-Paynerne in a different hand on the title-page. "The first definitive European work on the Chinese empire" (Hill).

With a new preface and bibliography, first published in Paris the previous year in a folio edition. The first printed account of Vitus Bering's first expedition to Alaska in 1725-1728, is included in volume four: "The original report traveled a circuitous route to fall into Du Halde's hands. The Danish Vitus Bering (1681-1741) had entered the Russian navy as a young man and risen through the ranks. His expedition was sponsored by the Russian Czar Peter the Great. When Bering returned to St Petersburg in 1730, five years after the death of Peter the Great, his account and an accompanying map were sent as a gift to the King of Poland, who gave them to Du Halde with permission to do with them "as he saw fit". In this way the first account of Bering's important exploration was published in France rather than in Russia, where the full narrative was not published until several years later" (Hill). *Brunet* II, 870; *Cordier Sinica*, p. 48; *Hill* 498.



A TALL AND ATTRACTIVE COPY, WITH FINE RICH CONTEMPORARY HAND-COLOR



Lot 75. ORTELIUS, Abraham (1527-1598)

Theatrum Orbis Terrarum... - Parergon in quo Veteris Geographiae aliquot tabulae... - Nomenclator Ptolemaicus.

Antwerp : Christopher Plantin, 1584. Second Latin edition, printed by Plantin.

Retail: \$222,000. Estimate: \$125,000 - 175,000. **Reserve: \$95,000.**

Comparables: Galerie Bassenge, 2017 - EUR 190,650.

Folio (18 x 11 3/4"). Engraved architectural title-page, "Parergon" with engraved vignette title-page with woodcut surround, "Nomenclator" title-page with woodcut vignette, engraved portrait of Ortelius by Phillip Galle, and 112 double-page engraved maps ALL WITH FINE RICH CONTEMPORARY HAND-COLOR and mounted on guards (one or two very discreet and expert repairs to early leaves, small repair to gutter of the map of Africa affecting the image, some light browning and occasional marginal thumbing). Modern vellum over paste-board, each cover elaborately decorated in a Dutch 16th-century mannerist style (front endpapers renewed with antique paper, ATTRACTIVE).

Provenance: with the early initials F. B. at the foot of the title-page.

The world map "Typus orbis terrarum" is Shirley's first plate, second state, with the crack in the copperplate repaired lower left "All the elements of the modern atlas were brought to publication in Abraham Ortelius's 'Theatrum Orbis Terrarum'. This substantial undertaking assembled... the best available maps of the world by the most renowned and up-to-date geographers... each of Ortelius's maps was engraved specifically for his atlas according to uniform formats" (Shirley).

Ortelius first published his "Theatrum...", arguably the first atlas in the modern sense of the word, in 1570, with seventy copper engravings on fifty-three double-folio pages. A businessman native to Antwerp, Ortelius compiled the best existing maps, re-engraved them on a standardized format, and included them with the text in one volume. But, by 1570, he had been dealing in maps and charts for more than twenty years. The death of Ortelius's father in 1535, who had been a wealthy merchant, seems to have placed his family in financial difficulties. When Ortelius was as young as 19 he is recorded as having joined the Guild of St. Luke as 'afsetter' "or colourist of maps and prints. He seems to have reached a very advanced level of skill in this craft, as some customers continued to insist on buying atlases coloured by him personally at a time when he had already developed into a publisher and cartographer/merchant... Ortelius [also] became a trader in books, prints and maps. Much of this trading had to do with the house of Plantin [subsequently publisher of the Theatrum]. Soon he was attending the book fair in Frankfurt to buy and sell books, maps and prints for others as well as for himself. He first met Gerard Mercator there in 1554, which marked the state of a life long professional relationship and personal friendship... " (van den Broecke page 14).

Through his work Ortelius became quite cosmopolitan. He travelled extensively to France, Germany, Switzerland, Austria, Hungary, Italy, England and Ireland, and as a result had command of several languages. With the publication of the "Theatrum" came tremendous success and wealth. Giving full credit to the original cartographers, the "Theatrum" was so successful that it was printed three times in 1570 alone. In 1574 Ortelius retained the position of Royal Cosmographer to Phillip II and was given a fine gold necklace, worth 1000 ducats. Between 1570 and 1612 the atlas was published in 42 editions and the 7 languages: Latin, German, Flemish, French, Spanish, English and Italian. Maps relating to the Americas are "Typus Orbis Terrarum" showing south America with a great bulge on the Chilean coastline, and New Guinea as a separate island, with the imaginary great south land "Terra Australis Nondum Cognita" covering the southernmost latitudes, and with the Terra del Fuego and Beach peninsulars marked; "Americae sive Novi Orbis Nova Descriptio" shows North and South America with the coastline of Chili a great bulge, New Guinea and Terra del Fuego are shown as peninsulars of the great southern land; "Hispaniae Novae sive Magnae... 1579"; "Culiacanae..." and the islands of Hispaniola and Cuba; and Peru, Florida. Maps relating to Australia are "Asiae Nova Descriptio" which shows New Guinea as a separate island and the north coast of Australia as "Terae Incognitae Australis"; and "Indiae Orientalis Insularumque Adiacentium typus".

“THE FIRST SEA ATLAS (IN THE REAL SENSE OF THE WORD)” (Koeman)

Lot 76. JANSSENIUS, Joannes (1588-1664).

Atlantis majoris quinta pars, orbem maritimum seu omnium marium totius orbis terrarum navigationibus hodierno tempore frequentatorum descriptionem accuratissimam continens; cui adjunctus est orbis antiquus & Graeciae parallela.
Amsterdam: Joannes Janssonius, 1652. Second Latin text edition.

Retail: \$90,000. Estimate: \$50,000 - 80,000.

Comparable: Sotheby's, 2001 - 30,150 GBP.

Reserve: \$45,000.

Folio (19 5/8" x 12 3/4"). Engraved historiated title-page, with contemporary hand-colour HEIGHTENED IN GOLD. Double-page engraved anemometric table with FINE CONTEMPORARY HAND-COLOR IN FULL (righthand edge frayed, re-inforced on verso, and with short closed tear affecting the image) and 32 maps by Jansson, Peter Kaerius, J. Laurenberg, and others, all with FINE CONTEMPORARY HAND-COLOR in outline and with the cartouches and other decorative elements colored in full (2D4 separated at the gutter). Contemporary gilt-panelled mottled calf, gilt edges (rebacked, with an early repair to the front cover).

First published in 1650 as the fifth volume of Jansson's "Novus atlas." "Orbem maritimum" was the "first sea atlas in the real sense of the word ... a collection of charts in folio size, to serve as an atlas for general purposes" (Koeman). Three maps relate to North America: an important seachart of the northern Atlantic "Mar del Nort"; "Insularum Hispaniolae et Cuba" showing the importance of these islands to the Spanish; and "Mar del Zur Hispanis Mare Pacificum" the first sea chart of the Pacific region, depicting California as an island, and a small part of the Gulf of Carpentaria. Other maps that show the early Western Australian coastline include "Mar di India" and "Polus Antarcticus".

Koeman Me 165; Martin Woods *Mapping our World: Terra Incognita to Australia*, National Library of Australia, p. 157.



A LARGE-SCALE GLOBE SHOWING THE ADDITION OF TEXAS AND CALIFORNIA TO THE U.S., FOLLOWING THE TREATY OF GUADALUPE-HIDALGO

Lot 77. JOHNSTON, A.K. (1804-1871).

Johnston's Library and School Globe.

Made of two sets of twelve finely engraved gores, engraved brass dial, brass meridian circle with graduated degrees, the papered horizon ring with degrees of amplitude and a zimuth, compass directions and houses of the zodiac, raised on a carved mahogany stand, the legs ending in brass-wheeled casters.

London, ca. 1850.

Diameter 32"; height with stand 57 1/2".

Retail: \$45,000. Estimate: \$30,000 - 40,000

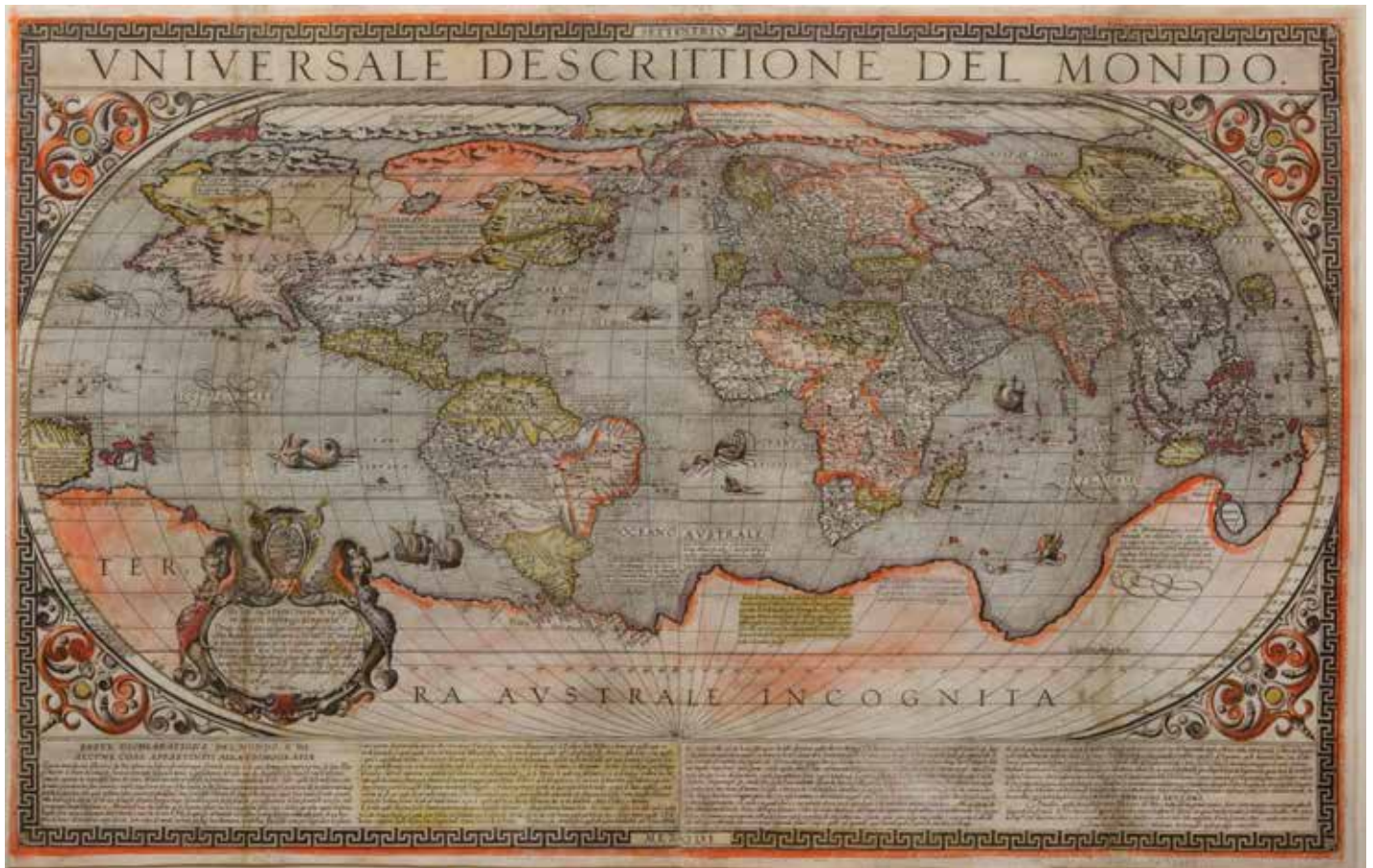
Reserve: \$20,000.

This remarkable large-scale globe, which is nearly five feet tall in its stand, captures one of the most fascinating time periods in United States history. At the time the globe was assembled around 1850, westward expansion was well underway with the Union's gain of California and New Mexico in the signing of the Treaty of Guadalupe Hidalgo. In addition to the historical significance of the piece, the globe is also a superb example of mid-19th century craftsmanship from the distinguished workshop of W. & A. K. Johnston.

Through the globe is undated in the cartouche, several cartographic clues place its creation within a four year time period between 1849-1853.



A RARE TWO-SHEET LAFRERI-SCHOOL WORLD MAP WITH ORIGINAL COLOR



Lot 78. ARNOLDI, Arnolfo di (d. 1602).

Universale descrittione del mondo.

Engraved map with original hand color.

Siena: Giovanni Florimi, 1634. Second issue.

32 ¼" x 20 ¾" sheet, 39 ¾" x 28 ½" framed, floating with glass recto and verso.

Retail: \$175,000. Estimate: \$100,000 - 150,000. **Reserve: \$75,000.**

A stadium map of the world, with scrollwork in the corners. The whole is surrounded by a white-on-black heraldic meander. At the top, the title. At the bottom, a description in four columns. At the lower left of the map, a cartouche with the arms of Federico Borromeo (il Giovane). Backed onto a sheet, evening out some irregular margins. Two vertical lines of soiling from earlier folds. Two areas restored in facsimile: ONDO in the title with its corresponding border, and a triangular section north of China centered on Tanguth. Some small patches of abrasion, but altogether in excellent shape, and with vivid original hand-color.

The Lafreri School takes its name from Antonio Lafreri (1512-1577), the Burgundian cartographer-engraver who settled in Rome and who embarked on the method of compiling atlases from loose sheets printed by various engravers and cartographers, based on the interest of a particular client. This practice would become popular throughout the continent in the XVIIc. Lafreri-School maps represent the high-water-mark of Italian cartography before the center of mapmaking moved north to the Netherlands. Arnolfo di Arnolfi (d. 1602), a Belgian transplant to Italy, went to work for Matteo Florimi (1540-1615), whose son Giovanni continued the business after his death as Eredi Florimi (Florimi's Heirs). Arnolfi brought influences from further afield to Italian mapmaking; in the case of our map, the 1592 eighteen-sheet cylindrical map of 1592 (which survives in a single copy at the Colegio del Corpus Christi in Valencia) made by Petrus Plancius. Arnolfi's ten-sheet map (1600) was the first to draw on that map. In 1601, Arnolfi reduced the map to two sheets; our map is the second state of that 1601 two-sheet map (of which Bifolco-Ronca cites only five copies). The original state was dedicated to Cristoforo Chigi, the 1634 state to Federico Borromeo (1617-1673), who in that year (at the age of 17) received his doctorate in civil and canon law from the University of Siena.

The map is notable cartographically. It includes the Strait of Anián, the hypothesized precursor to the Bering Strait, as well as Lake Conibas, a clustered lake generalizing the Great Lakes, drawn from Mercator's 1569 map. Indeed, Mercator's influence is strongly felt throughout the map. The North Pole is in four islands, and there is a magnetic node near the Strait of Anián, which is perhaps an early explanation of magnetic variance. Most striking of course is the terra australe incognita that fills nearly half of the southern hemisphere. It is connected to the southern tip of South America in the western hemisphere and joins to Giava Minore (i.e., Sumatra), which had been mentioned by Marco Polo and erroneously positioned on maps for centuries by scribal error; the connection of Sumatra to the terra australis was made by Jean Alfonse in 1544 and persisted into the XVIIc despite exploration by Janszoon and others.

Bifolco-Ronca, pp. 296-297; Shirley, *Mapping of the World* 228.



Lot 79. JAILLOT, Hubert (1632-1712),
After SANSON, Nicolas (1600-1667).
*Mappe-Monde = Geo-Hydrographique, ou Description Generale Du
Globe Terrestre et Aquatique en Deux-Plans-Hemispheres...*
Engraved map with original hand color in part.
Paris: Jaillot, 1691 (1692).
25 1/8" x 38 1/8" sheet.

Retail: \$7,500. Estimate: \$4,000 - 6,000. **Reserve: \$2,500.**
Comparable: Arader Galleries, 2018 - \$5,185.

Shows California as an island, and partial New Zealand and Australia. Beautifully colored example of Jaillot's map of the world after Sanson. The two hemispheres are drawn on an enlarged scale, engraved with distinction, and printed on heavy quality paper. The limited decoration enhances the overall effect: at the top cherubs with flowing banners are seated astride dolphins and support the arms of France. At the bottom a bold cartouche is flanked by two twin-tailed mermen. (Shirley 462, Plate 4, state 1).



Lot 81. HOMANN, John Baptiste (1664-1724).
Planiglobii Terrestris cum Utroq Hemisphaerio Caelesti...
Engraved map with original hand color in part.
Nuremberg, c. 1720.
20 3/4" x 23 7/8" sheet.

Retail: \$7,500. Estimate: \$4,000 - 6,000. **Reserve: \$2,500.**
Comparable: Swann, 2000 - \$4,600.

This is one of the most decorative eighteenth century world maps. The two hemispheres are surrounded by vivid engravings of natural phenomena such as waterspouts, a rainbow, earthquakes, and a volcano. Wind heads occupy the starry heavens, and two putti hold the title banner aloft. The map itself shows a typical geographical view of the period. California is shown as an island.



Lot 80. MOLL, Herman (1654-1732).
New and Correct Map of the Whole World.
Engraved map with original hand color or full.
London: Printed for J. & T. Bowles, 1719.
28 1/4" x 47 7/8" sheet.

Retail: \$9,500. Estimate: \$5,000 - 8,000. **Reserve: \$3,500.**

Large, attractive world map. Large swathes of North America marked "Parts Unknown," California depicted as an island, and the coastline of New Holland left incomplete. London-based cartographer Herman Moll produced this world map to document the numerous expeditions undertaken by English explorers searching for an ocean passage to Asia and in the settlement of the Americas. In addition to notes on climate and weather events, Moll also included an early rendering of the trade winds in this map. Shown as small arrows and curving lines, Moll based his depiction on the first meteorological map produced by Edmund Halley in 1686, with new information provided by actual explorers, including the recorded observations of erstwhile pirate Woodes Rogers. The seasonal trade winds were critical to efficient navigation of oceans in the 18th century.



Lot 82. BOWEN, Emanuel (1694-1767)
and Thomas BOWEN (1733-1790).
A New & Accurate Map of the North Pole.
Engraved map. London: Printed for William Innys, Richard Ware, Aaron Ward, J. and P. Knapton, John Clarke, T. Longman and T. Shewell, Thomas Osborne, Henry Whitridge. M.DCC. XLVII (1747). 17 1/2" x 19 1/2" sheet.

Retail: \$3,500. Estimate: \$1,500 - 3,000. **Reserve: \$800.**

Provenance: with copies 19th-century manuscript notes in the margins, including extracts from Sir John Ross' "Narrative of a Second Voyage in Search of a North-West Passage and of a Residence in the Arctic Regions during the years 1829, 1830, 1831, 1832, 1833". A fine map of the North Pole from Bowen's "A complete system of geography", London: Printed for William Innys, 1757, the margins filled with notes from Ross's voyage in search of a North-West Passage regarding the great cold and impenetrable ice of Prince Regents Inlet, not very far from where Sir John Franklin went missing about 15 years later, and where one of his ships has just been found.



Lovely example of this important map with strong impressions. Very rare large-scale map of Africa, redesigned issue of Pigafetta's 1590 map, with more decorative features. Extremely detailed, depicting Africa from the Mediterranean to the Cape, but excluding West Africa. This map, prepared on the basis of notes by Duarte López who lived in Africa from 1578-1587, provided Europeans with one of the earliest detailed depictions of the continent based on first-hand information. Aside from their historical importance, these maps are among the most beautiful delineations of Africa and reflect the best of late 16th

century Italian Lafreri school engraving. Depicting the eastern portion, including all south of the western bulge. It is one of the few early maps to make a meaningful alteration in the depiction of Africa, changing the two lakes that are the sources of the Nile from a side to side to a vertical arrangements. Tooley, MCCS No. 29, #134; Norwich, *Maps of Africa*, #16

Lot 83. PIGAFETTA, Filippo (1533-1604).

Tabulam hanc Aegypti.

Engraved map, from Jan Huygen Van Linschoten's *Intinerario*. London, 1598. 13" x 16 1/2" sheet, each, 38" x 26" framed

Retail: \$18,500. Estimate: \$10,000 - 15,000. **Reserve: \$8,000.**



Lot 84. JAILLOT, Hubert (1632-1712),

After SANSON, Nicolas (1600-1667).

L'Afrique distinguee en ses principales parties....

Engraved map with original hand color in part.

Paris: Jaillot, 1692.

24 3/4" x 38 3/4" sheet.

Retail: \$4,500. Estimate: \$2,000 - 4,000. **Reserve: \$1,200.**

Based on Sanson's second map of Africa (1668), it presents the standard Ptolemaic description of the source of the Nile. However, Jaillot introduced a new depiction of the rivers south of these Ptolemaic lakes.

Four City Views in Northern Africa



Lot 85. VISSCHER, Nicholas (1649-1702).

Thunis, Tangere, Tripolo, Del Mina. [Tunis, Tunisia; Tangier, Morocco; Tripoli, Libya; Elmina, Ghana].

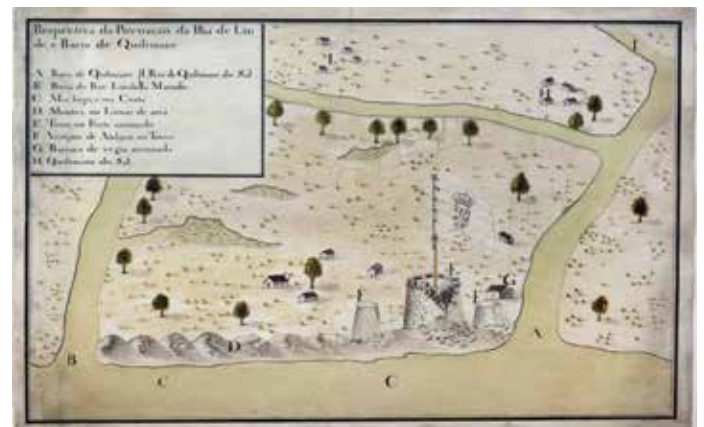
Engraving with original hand color.

Amsterdam, c. 1695.

21" x 24 7/8" sheet.

Retail: \$1,500. Estimate: \$800 - 1,200.

Reserve: \$400.



Lot 86. [Manuscript Map of the Quivimabas Islands Northern Coast of Mozambique].

Perspectiva da Povoacao da Ilha de Linde, e Barra de Quilimane. Manuscript map with original color in watercolor.

Portugal or Mozambique, probably early 18th century.

12" x 18 1/4" sheet.

Retail: \$18,000. Estimate: \$8,000 - 15,000. **Reserve: \$5,500.**

Manuscript map depicting the early settlement of Quilimane by the Portuguese. Quilimane was an important trading center for the Portuguese from the 16th-19th centuries because of its proximity to the Zambezi River. It was only in the mid-19th century that any other nation was allowed to trade from the town. Because of its ideal location, it was one of the most important slave trading centers in East Africa. It was also the starting point for David Livingstone's famous expedition up the Zambezi to Lake Nyasa in 1868.

**Unusual Artistic View of the Paradise of Daphne
by Famed Cartographer Abraham Ortelius**



Lot 87. ORTELIUS, Abraham (1527-1598).
Daphne, Antiochiae Suburbium.
Engraving. Antwerp, c. 1590.
18 $\frac{5}{8}$ " x 22 $\frac{1}{2}$ " sheet.

Retail: \$1,250. Estimate: \$500 - 1,000. **Reserve: \$250.**
Comparable:.

Decorative bird's-eye view of the paradise of Daphne, near Antioch in Syria. This view appeared in the later editions of Ortelius' *Parergon*, the first modern world atlas. It was one of only two fantasy views ever printed in the *Parergon*, and one of the rarer works from Ortelius' atlases available today.

Four City Views in Asia and the Far East



Lot 88. VISSCHER, Nicholas (1649-1702).
Batavia, Jerusalem, Kajutsiu, Kom.
[Jakarta, Indonesia; Jerusalem, Israel; Gaoyou, China; Qom, Iran]
Engraving with original hand color. Amsterdam, c. 1695.
21" x 25" sheet.

Retail: \$1,800. Estimate: \$1,000 - 1,500. **Reserve: \$600.**

Lot 90, Property of a Pennsylvania Gentleman



Lot 89. JAILLOT, Hubert (1632-1712),
After SANSON, Nicolas (1600-1667).
L'Asie divisee en ses Principales Regions...
Engraved map with original hand color in part.
Paris: Jaillot, 1692. 25 $\frac{1}{8}$ " x 38 $\frac{1}{4}$ " sheet.

Retail: \$5,500. Estimate: \$2,000 - 4,000. **Reserve: \$1,200.**

One of the largest and most impressive general atlas maps of the Asian continent. Based on Nicolas Sanson's Sr's map of 1650, but Jaillot has updated the north-eastern coastline in the manner of Du Val's map of ca.1670.



Lot 90. VALENTIJN, Francois (1666-1727).
Kaart van het Eyland Formosa en de Eylanden van Piscadores.
Engraved map with original hand color.
Amsterdam: Valentijn, 1726.
17 $\frac{1}{2}$ " x 21 $\frac{1}{2}$ " sheet, 23 $\frac{1}{2}$ " x 28" framed.

Estimate: \$4,000 - 6,000. **Reserve: \$3,500.**

A lovely hand-colored map of the earliest and most desirable printed map of Taiwan / Formosa.

Three Maps of Turkey / Asia Minor including the first map of Turkey & Greece published in America



- Lot 91.** 1. CAREY, Matthew (1760-1839). Turkey in Europe and Hungary from the best Authorities. Engraved map with original hand color in outline. Philadelphia: Mathew Carey, 1814, from Carey's *General Atlas, Improved And Enlarged; Being A Collection Of Maps Of The World And Quarters, Their Principal Empires, Kingdoms, &c...* 17 ½" x 21 ¾" sheet.
2. MUELLER, F. (18th Century). [Black Sea] Kriegstheater oder Graenzkarte Oesterreichs, Russlands, und der Turkey... Engraved map with original hand color in part. Vienna: Schultz, 1788. 21 ¼" x 29 7/8" sheet.
3. [Turkey & Holy Land] Turkey in Asia. Engraved map with original hand color in full. Engraved by W. Dafsauville, with full large margins. London, c. 1820's. 21 ¼" x 27 7/8" sheet.

Retail: \$3,000. Estimate: \$1,500 - 2,500. **Reserve: \$750.**



- Lot 92.** SARONY & Co., Drawn by W. Heine; E. Brown Jr. Direx. *Passing the Rubicon. / Lieut's Bent in the "Mississippi" first cutter forcing his way through a fleet of Japanese Boats while suveying the Bay of Yedo, Japan, July 11th 1853. / To Commodore M. C. Perry.* Lithograph with original hand color. New York: E. Brown Jr., 1855. 25 ½" x 34 ½" sheet.

Retail: \$8,500. Estimate: \$4,000 - 7,000. **Reserve: \$3,000.**
Comparable: Swann, 2008 - \$4,560.

One from a series of 6 large prints produced after William Heine, the artist who accompanied Commodore Perry's expedition to open Japan to commerce--a turning point in American "gunboat diplomacy" and naval might.

- Lot 94.** *Map of Southern Japan Published by the ABCFM.* Lithographed map printed on linen. Boston, 1881. 35 ½" x 55 ¼" sheet.

Retail: \$3,500. Estimate: \$1,500 - 3,000. **Reserve: \$800.**

Rare map of Japan, published by the American Board of Commissioners for Foreign Missions in Boston. The American Board of Commissioners for Foreign Missions (ABCFM) was the first American Christian missionary organization. The objective of the ABCFM was to spread Christianity worldwide.

A fine photograph of Hong Kong, showing East Point in the 1860s, with the first stage of land reclamation in the fore-ground.



- Lot 93.** FLOYD, William Pryor (1834-1900). *Fine Photographic Panorama of East Point, Hong Kong.* 2 Albumen prints joined. c. 1868. 8 ¾" x 22 ½" sheet, 32" x 22 ½" framed.

Retail: \$8,500. Estimate: \$5,000 - 8,000. **Reserve: \$3,500.**



The first edition of Girolamo Ruscelli's translation of Claudius Ptolemy's *Geographia*, published in Italian. It was printed by Vincenzo Valgrisi in Venice, with the text translated from Greek by Ruscelli.



Lot 95. RUSCELLI, Girolamo (1518-1566).
Della Gallia o' Francia.
 Engraved map from Ptolemy's *La Geografia*.
 Venice: Vincenze Valgrisi, 1561. 9 1/4" x 12 1/8" sheet.
 Retail: \$2,500. Estimate: \$1,000 - 2,000. **Reserve: \$500.**

Great map of France showing all the post routes with original color indicating the post offices.



Lot 96. JAILLOT, Hubert (1632-1712).
La France divisee par Provinces...
 Engraved map with original hand color in outline.
 Paris, c. 1714. 22 1/8" x 27" sheet.
 Retail: \$1,200. Estimate: \$400 - 800. **Reserve: \$250.**



Lot 97. [French & Belgium Border, Meuse Valley] *Carte de Givet A'Dinant.*
 Manuscript map in ink and watercolors on paper. France, c. 1750. 20" x 56 1/2" sheet.
 Retail: \$15,000. Estimate: \$8,000 - 12,000. **Reserve: \$5,000.**



Lot 98. FREMINVILLE, Christophe-Paulin de La Poix, chevalier de (1787-1848). *Plan de la Riviere de Pontrieux...*
 Manuscript Map with original hand color in full. c. 1831 or later. 15 3/4" x 65 3/4" sheet.
 Retail: \$9,000. Estimate: \$5,000 - 8,000. **Reserve: \$3,500.**

Manuscript map showing the upper section of the River Trieux including the L'île à Bois & the town of Lézardrieux in the Brittany Region of France. In Freminville's later years, he devoted himself to archeology and natural history, and is credited with founding the archeology of Lower Brittany.



Lot 99. MUNSTER, Sebastian (1488-1552).

La situation de la ville de Rome...

Engraved map with original hand color.

Basel, ca. 1580. 12" x 15 1/2" sheet.

Retail: \$950. Estimate: \$400 - 800. **Reserve: \$250.**

This is a great early plan view of 16th century Rome and the Vatican City. Monuments of the ancient city, such as the Coliseum, the Pantheon and the aqueducts are also shown. A lettered key below the view identifies numerous locations.



Lot 101. RIZZI-ZANNONI, Giovane Antonio (1736-1814).

L'Italia ... in quarto fogli imperiali con l'aggiunte dei luoghi e strade postali. Engraved map with original hand color, Venice: Gio. Valerio Pasquali, 1806. 48" x 35 3/4" sheet.

Retail: \$4,500. Estimate: \$2,000 - 4,000. **Reserve: \$1,000.**

Comparable: Christie's, 2014 - 938 GBP.

FINE MAP of his native Italy by Rizzi-Zannoni.



Lot 100. DE FER, Nicolas (1646-1720).

Routes des Postes D'Italie...

Engraved map with full original color and minor manuscript annotations. Paris, c. 1705. 19" x 27" sheet.

Retail: \$1,250. Estimate: \$500 - 1,000. **Reserve: \$400.**

This unusual, large map identifies the postal routes throughout Italy. The large title cartouche is supported by two drape-style cartouches containing the distance scale and a dedication to Nosseigneurs les Enfants de France, the children of the royal family of France.



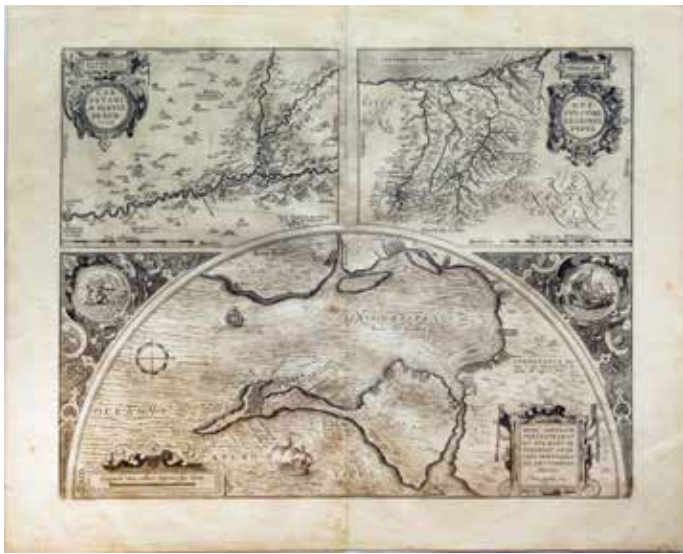
Lot 102. MENEGAZZI, Carlo ((1856-1920).

[Venice Watercolor, showing St. Mark's Campanile].

Watercolor on paper. c. 1910's

11 1/2" x 18" sheet, 20 1/2" x 27 1/2" framed.

Retail: \$2,500. Estimate: \$1,000 - 2,000. **Reserve: \$500.**



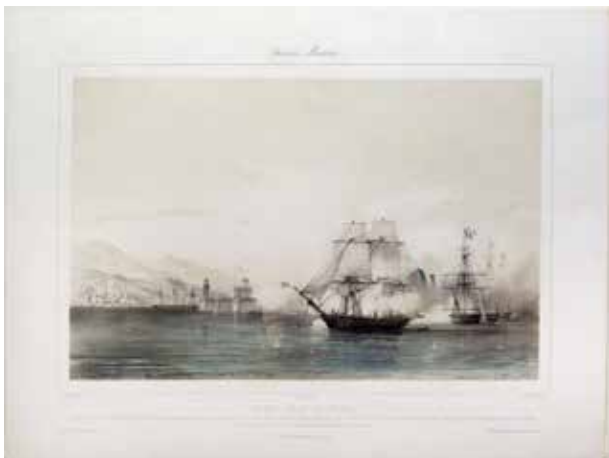
Lot 103. ORTELIUS, Abraham (1527-1598). *Carpetniae Partis Descr. / Guipus Coae Regionis Typus / Hanc Insulam perlustrabat et sua...*
Engraved map. Antwerp, 1584 or later. 18 ½" x 22 ½" sheet.
Retail: \$1,250. Estimate: \$500 - 1,000. **Reserve: \$250.**

The semicircular map of Cadiz is taken from a manuscript map drawn by George Hoefnagel during his stay from 1563-1567. The Carpetaniae map is very accurate but from an unknown source. The source of the Guipuscae map is also unknown, but de Jode also published it in 1578.



Lot 105. SAYER, Robert (1725-1794). *The European Part of the Russian Empire [Joined With] The Asiatic Part of the Russian Empire...*
Engraved map with original hand color in outline. London: Robert Sayer, 1788. 21 ¼" x 52 ½" sheet.
Retail: \$4,500. Estimate: \$2,000 - 4,000. **Reserve: \$1,200.**

Two tremendously detailed maps, with two title cartouches, joined (as issued) to cover the whole of Russia and showing the full extent of the empire with its new provinces on the Black Sea. The map was compiled from the maps of the Imperial Academy at St. Petersburg with additional information from Capt. Cook in Kamchatka.



Lot 106. *Episodes Maritimes / Saint-Jean-D'Ulloa.* Dressine par A. Mayer / Imp. par Lemerciet a Paris / Lith par A. Mayer et Sabatier.
Lithograph with original hand color.
Paris: Bulla et Jouy or London: Gamart, Junin & Co., c. 1840.
18" x 24 ¼" sheet

Retail: \$2,500. Estimate: \$1,000 - 2,000. **Reserve: \$500.**

The Battle of Veracruz, also known as the Battle of San Juan de Ulúa, was a naval engagement that pitted a French frigate squadron under Rear Admiral Charles Baudin against the Mexican citadel of San Juan de Ulúa, which defended the city of Veracruz, from 27 November to 5 December 1838.

Detailed view of Cartagena, Spain



Lot 104. After DE SAN MIGUEL, Vincente Tofino (1732-1795). *Plano de La Ciudad, Puerto, Y Arsenal de Cartagena....*1788.
Engraved map. Spain, 1788 from *Atlas Marítimo de España*.
25 ¾" x 39" sheet.

Retail: \$2,500. Estimate: \$1,200 - 1,800. **Reserve: \$900.**

Vicente Tofiño de San Miguel y Wanderingales (or Vanderiales) was a Spanish navigator and cosmographer. In 1755 Jorge Juan asked Tofiño to join the faculty of the Academy of Marines at Cádiz (Academia de Guardia Marinas de Cádiz) as a mathematics instructor, while also allowing Tofiño to join the Armada as a second lieutenant (alférez de navío). In 1768 Tofiño was named Director of the Academy and in 1773, was named Director of the Academies of Ferrol and Cartagena as well.

RARE, THE EARLIEST DUTCH MAP OF SOUTH AMERICA



Lot 107. DE JODE, Cornelis (1568-1600). *Brasilia et Peruvia*. Engraved map. Antwerp, 1593.
15 3/4" x 20 1/2" sheet, 27 1/2" x 33 1/2" framed.

Retail: \$22,000. Estimate: \$15,000 - 20,000. **Reserve: \$12,000.**

This unusual map appeared in Cornelis de Jode's 1593 edition of the *Speculum orbis terrae*, an atlas initiated by his father, Gerard, in 1578. There is no mention of author, publisher or engraver. Gerard De Jode was a contemporary - and rival - of Abraham Ortelius. The publication of his original *Speculum* was subjected to repeated delays in the granting of the royal privilege probably instigated by Ortelius himself, who may have used his important connections to ensure that his *Theatrum* was launched well before De Jode's atlas. In spite of its attractive maps, the *Speculum* did not sell well, and few copies are recorded. The second edition of the *Speculum*, revised and enlarged, was started by Gerard de Jode before his death in 1591, and completed by Cornelis, who prepared ten new maps. "esp[er]t the difficulties surrounding the publication of the *Speculum* it must have had a good reputation, and Petrus Montanus mentions it in the same breath with Mercator's *Atlas* and Ortelius' *Theatrum* in his preface to Pieter Kaerius' *Germaniae inferior*" (Wardington Catalogue).



Lot 108. JAILLOT, Hubert (1632-1712),
After SANSON, Nicolas (1600-1667).
Amerique Meridionale divisee en ses Principales Parties...Presentee a Monseigneur le Dauphin...

Engraved map with original hand color in part.
Paris: Jaillot, 1692. 25 1/8" x 38 1/8" sheet.

Retail: \$6,500. Estimate: \$3,000 - 5,000.
Reserve: \$1,500.

Extremely fine map of South America showing the mythical city of El Dorado and mythical Lake Parime. The continent is divided into the French, Spanish, Portuguese and Dutch possessions. The fourteen coastal Capitaineries created by the Portuguese are outlined in Brazil. The course of the Amazon is delineated in a fairly accurate manner, yet it shows the river's source in a fascinating, interlacing maze of waterways.



Lot 109. SAYER, Robert (1725-1794).
A Map of South America...from Mr. D'Anville with Several Improvements and Additions, and the Newest Discoveries.
Two Part engraved map with original hand color in outline.
London: Sayer, September 20, 1775.
21 1/2" x 48 1/2" sheet & 21 3/4" x 48 1/4" sheet.

Retail: \$4,500. Estimate: \$1,500 - 3,000. **Reserve: \$1,000.**
Comparable: Freeman's, 2010 - \$1,500.

This stunning, large-scale map of South America is beautifully engraved and filled with information. A baroque cartouche incorporates a river scene, an Amazon queen, exotic animals and a treasure chest of gold and silver bars and coins.

A rare map, one of three relating to North America from Lescarbot's first history of the French settlements in America 'Histoire de la Nouvelle France'. The map shows the basin of Port Royal which is now called Annapolis Royal. The buildings (including the grist mill) in the lower right corner, fortifications, gun emplacements and river inlets are clearly shown. (Burden, 158).



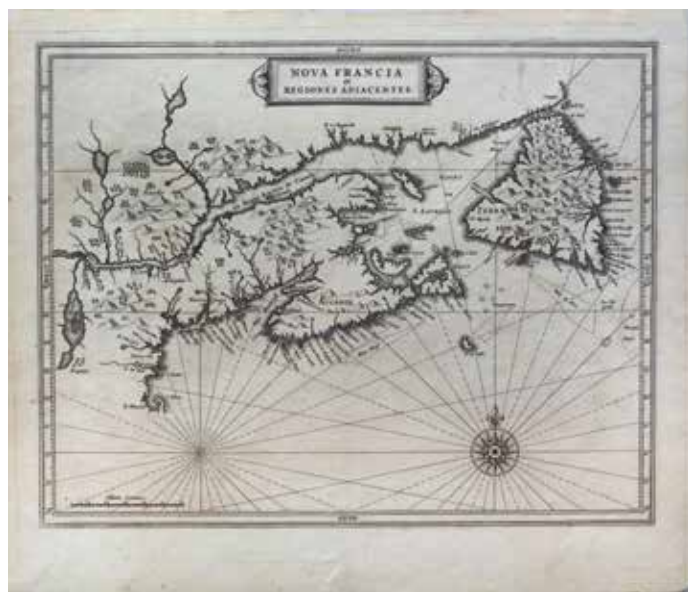
Lot 110. LESCARBOT, Marc (c. 1570–1641).
Figure du Port Royal en la Nouvelle France
 par. Marc Lescarbot, 1609.
 Engraved map. Paris, 1609. 6 ¼" x 10 ¾" sheet.
 Retail: \$26,000. Estimate: \$18,000 - 25,000.
 Reserve: \$12,000.

Henry Hudson's Final Sea Chart, One of the First Maps to Show Hudson Bay.



Lot 111. DE BRY, Johann Theodore (1561-1623).
Tabula Nautica qua repraesentatur orae maritimae...
 Engraved map. Amsterdam, 1613. 10 ¼" x 21 ¾" sheet.
 Retail: \$15,000. Estimate: \$8,000 - 12,000.
 Reserve: \$5,000.

This remarkable chart illustrates the track of the fourth and final voyage of Henry Hudson in his hunt for a Northwest Passage. It was a landmark map in the exploration of the North Sea and the Arctic as the first, and for decades the only, depiction of Hudson Bay. The map was originally prepared by Hessel Gerritsz in 1612, based on a chart brought back by the surviving members of Hudson's mutinous crew. This De Bry version was published the following year.



Lot 112. DE LAET, Joannes (1581-1649)
 & GERRITSZ, Hessel (1581-1632).
Nova Francia et Regiones Adiacentes.
 Engraved map.
 Antwerp: Elsevir, 1630.
 13 ½" x 15 ½" sheet.
 Retail: \$3,500. Estimate: \$1,500 - 2,500. Reserve: \$1,000.
 Comparable: Old World Auctions, 2018 - \$ 1,495.

Considered one of the foundation maps of Canada, this is the first printed map to show an accurate Prince Edward Island and the earliest to show a north-south orientation of Lake Champlain.

This landmark map is the first of Canada to show all five Great Lakes.



Lot 113. SANSON, Nicolas (1600-1667).
Le Canada, ou Nouvelle France.
 Engraved map with original hand color in outline.
 Paris, 1656. 16 ¾" x 22 ½" sheet.
 Retail: \$12,500. Estimate: \$8,000 - 12,000.
 Reserve: \$6,000.

The western shores of Superior and Michigan are left open-ended, indicating the lack of definite knowledge about the region at the time. (Burden 318; Kershaw 133).

Highly important map of Canada, the Great Lakes and Northeastern United States, originally engraved for Samuel de Champlain's 1619 *Les Voyages*.



Lot 114. DUVAL, Pierre (1618-1683). *Le Canada facit par le Sr. de Champlain*. Engraving with original hand color in part. Paris, 1664 (State 4). 17" x 22 1/8" sheet.

Retail: \$24,000. Estimate: \$12,000 - 18,000. **Reserve: \$9,000.**
Comparable:

The original Champlain map of 1616 is more general in nature than Champlain's 1612 map, illustrating the possible water routes to the Pacific Ocean and on to Asia. In the original 1616 map, the English presence in Jamestown is noted and the recent discoveries of the Dutch. The appearance of Virginia and the Chesapeake are drawn from John Smith's map of Virginia, the first use of this information on a map other than Smith's original. The map constitutes the first appearance of Lake Huron and Ontario on a printed map and the first appearance of the route to the Ottawa River. State 4 (circa 1664), without the additions of place names Boston, Manhaten (Manhattan), Montreal, Quebec and Port Royal in State 5. (Burden, P.D. 309; Imago Mundi XI (Wroth, An Unknown Champlain Map of 1616) 85-95; Schwartz & Ehrenberg, pl.47).



Lot 115. DE WIT, Frederick (c. 1629-1706). *Septentrionaliora Americae a Groenlandia, per Freta Davodos et Hudson ad Terram Novam / De Noordelyckste Zee kusten van America...* Engraved map with original hand color in part, from *Orbis Maritimus ofte Zee Atlas*. Amsterdam, c. 1680. 22" x 25 1/4" sheet.

Retail: \$7,500. Estimate: \$3,000 - 5,000. **Reserve: \$1,500.**

This is the first state of De Wit's fine chart of Hudson Bay and Arctic Canada. This beautifully engraved chart was based Van Loon's important chart of 1666 and includes Hudson Bay and Strait, Baffins Bay and extends to include the western coast of Greenland. A sea battle rages outside of the Hudson Straits and another ship sails in Baffins Bay. The chart is richly embellished with rhumb lines and two elaborate cartouches; the second with the Dutch title.

Detroit marks it's debut on this map, only two years after its founding.



Lot 116. COVENS, Jean (1697-1774) & MORTIER, Corneille (1699-1783); After DELISLE, Guillaume (1675-1726). *Carte du Canada ou de la Nouvelle France...* Engraved map with original hand color in part. Amsterdam, 1730. 25 3/4" x 22" sheet.

Retail: \$4,500. Estimate: \$2,000 - 4,000. **Reserve: \$1,000.**
Comparable: Old World Auctions, 2014 - \$1,495.

First issued in 1703, this richly detailed map provides the most accurate rendering of the Great Lakes of the time, with the lakes fully enclosed and properly placed in longitude and latitude. Delisle's map of Canada and the Great Lakes is one of the most outstanding and influential maps of the eighteenth century. (Kershaw #318; Tooley (Amer) p. 20 #39.)

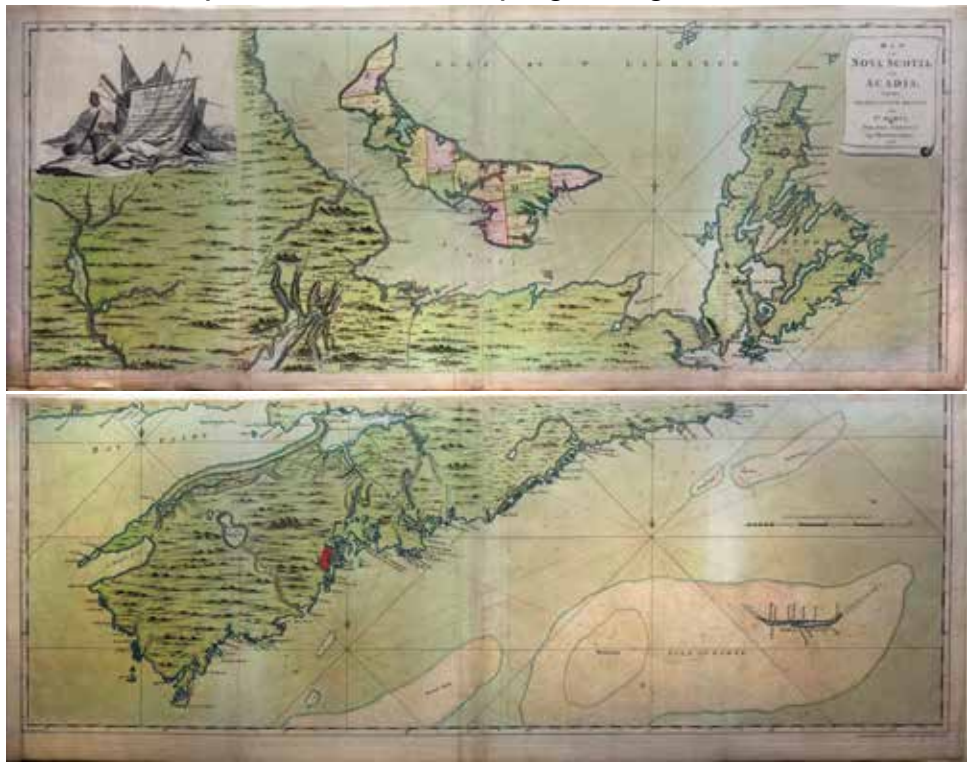
Spectuacular 18th Century English Original Color.

A fine detailed map showing Nova Scotia, and the Islands of Cape Breton and St. John's, with the dedication to John Manners within a cartouche top left, and the title top right, with exceptionally fine original hand-colour in full (one or two small areas of spotting, some minor offsetting, light vertical fold creases). A beautiful, large-scale and detailed map, showing Nova Scotia after the British had conquered Acadia (1710), and had the Great Expulsion of 1755-1763, when British colonial officers and New England legislators and militia deported approximately 11,500 Acadians from the maritime region. Many of the original French place-names have been replaced with English ones, although interestingly Cap St. Louis (after the French monarch) has yet to be changed to Cape St. George (after the patron saint of England). Roswald Island and Port Roswald are names in transition, soon to become thoroughly English: Roseneath and Roseway.

This impressive map covers the Maritime Provinces of eastern New Brunswick, Nova Scotia, and Prince Edward Island. It was the product of Montresor's own surveys and, despite being an accomplished British military engineer, the vast majority of the interior consists of imaginary mountains and vegetation. The map does, however, do a good job in identifying the numerous forts in the region including Fort Edward, Fort Sacville, Fort Anapolis, and Fort Laurence to name a few. It is interesting to note that while the Great Expulsion forcibly moved over 80% of Acadians during the French and Indian War, a section of French Inhabitants is noted to the north of Fort Anapolis (they were allowed to return in 1764, but few did).

Along the coastlines, there is good detail of settlements, capes, ports, and numerous offshore islands, as well as soundings and anchorages in the waters. Unlike the rest of the map which appears rather sparse, Prince Edward Island (here St. John's) is surveyed and delineated to show counties and parishes, and is based entirely upon the work of Samuel Holland.

The map is embellished with a large dedication to John Manners at top left and is further decorated by a scroll title cartouche at top right. Printed and sold by Andrew Dury in Dukes Court St. Martins Lane. According to Kershaw, this is the second state of the map with the land divisions present on Prince Edward Island.



Lot 117. MONTRESOR, John (1736-1799).

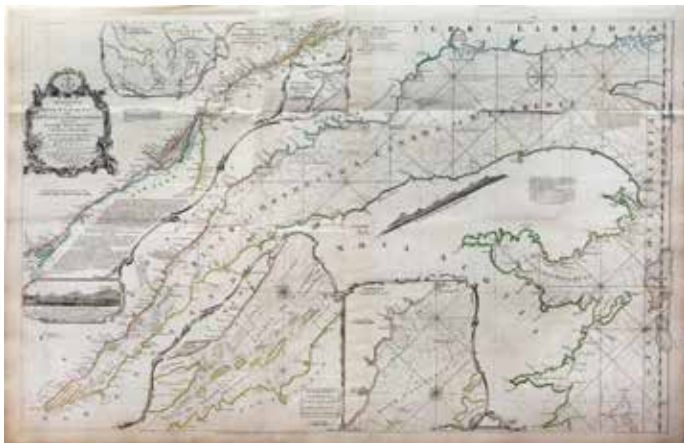
Map of Nova Scotia, Or Acadia; with the Islands of Cape Breton and St. John's, From Actual Surveys, by Captn Montresor, Engir. 1768.

Engraved map with exceptionally fine original hand color in full.

London: A. Dury, 1768. 19 3/4" x 55" Neat, 21 7/8" x 56 1/4" sheet, each.

Retail: \$35,000. Estimate: \$22,000 - 30,000.

Reserve: \$15,000.



Lot 118. JEFFERYS, Thomas (c. 1719-1771).

An exact chart of the River St. Laurence, from Fort Frontenac to the Island of Anticosti...

Engraved map with original hand color in outline.

London: Sayer & Bennett, 1775.

25" x 39" sheet.

Retail: \$2,500. Estimate: \$1,500 - 2,200.

Reserve: \$1,000.

This large-scale map of the St. Lawrence River was first issued in 1757. It is based on the surveys of Jean Desayes with an updated depiction of the river from Lake Ontario to Quebec based on D'Anville. This great navigational chart is complete with soundings, rhumb lines, sailing directions, and coastal profiles.



Lot 119. ADAMS, John (Surveyor, active 1819-1837).

Map of the City & Suburbs of Montreal... Constructed from anew survey by John Adams, 1825.

Engraved map by Jas D. Stout, New York.

c. 1825. 32 1/4" x 74" sheet.

Retail: \$8,000. Estimate: \$4,000 - 6,000. **Reserve: \$2,500.**

Comparable: Librairie Loeb Larocque, 2007 - 3978 Euro.



Lot 120. ORTELIUS, Abraham (1527-1598).
La Florida / Guastecan / Peruviae...
 Engraved map. Amsterdam, 1584 or later.
 16 ½" x 20 ¾" sheet.

Retail: \$1,700. Estimate: \$1,000 - 1,500. **Reserve: \$800.**
 Comparable: Swann, 2011 - \$2,640 (Colored).

This is one of the few sixteenth century maps based on Spanish sources; in this case drawn from reports of Hernando de Soto's expedition through the region. There are three maps on this sheet. The most important map (La Florida) is the first printed map of the southeastern portion of the United States. This influential map provided the foundation cartography for the region, particularly in the depiction of the river system. (Burden, 57).

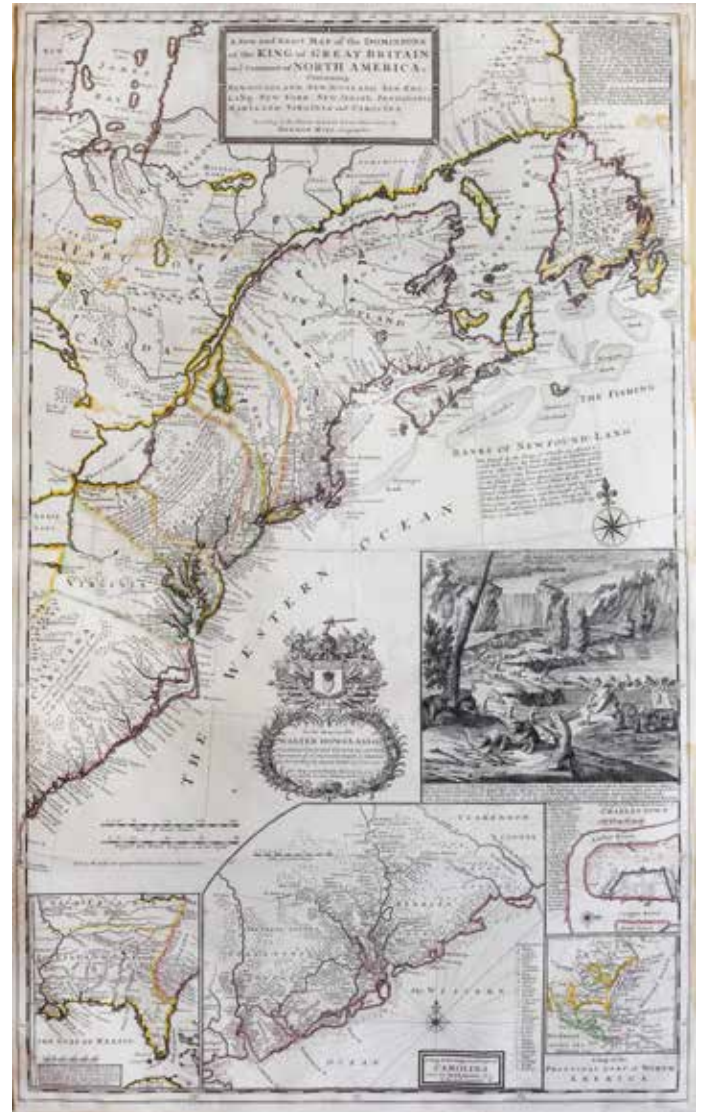


Lot 122. HOMANN, Johan Baptista (1664-1724).
Nova Anglia septentrionali Americae implantata Anglorumque coloniis...
 Engraving with original hand color.
 Nuremberg, c. 1730.
 20 ⅝" x 24" sheet.

Retail: \$2,800. Estimate: \$1,800 - 2,500. **Reserve: \$1,200.**
 Comparable: Christie's, 2013 - \$2,500.

This handsome map shows the English colonies of Nova Anglia and New Jarsey and the Dutch colony of Novum Belgium - Nieuw Nederland - New York. It covers the region from Delaware Bay to Eastport, Maine.

Handsome example of the famous "Beaver Map,"
 Moll's most celebrated effort as it documents the
 ongoing dispute between Great Britain and France over
 the boundaries separating their colonies in America.



Lot 121. MOLL, Herman (1654-1732).
[Beaver Map] A New and Exact Map of the Dominions of the King of Great Britain on ye Continent of North America...
 Engraved Map with original hand color in part.
 Sold By H. Moll over against Deverux Court on the Strand, London, 1715.
 40 ¼" x 24 ½" sheet, 45 ½" x 29 ½" framed.

Retail: \$18,000. Estimate: \$13,000 - 16,000.
Reserve: \$11,000.
 Comparable: Brunk Auctions, 2020 - \$18,450.

The map explains the postal routes throughout the British territories and is generally thought to be the first postal map of the colonies. The striking beaver inset serves to not only symbolize the Puritan industriousness needed to settle in America, but also the lucrative fur trade spreading wealth and opportunity among the colonies. Plate 78 in Schwartz / Ehrenberg "The Mapping of America".

The Duke of Northumberland's Example of Fry & Jefferson's Famous Map of Virginia

He Fought for the Howe Brothers during the American Revolution, until the prospect of killing fellow Englishman drove him to resign.



Lot 123. FRY, Joshua (1699-1754) and JEFFERSON, Peter (1708-1757).

A Map of the most Inhabited part of Virginia containing the whole Province of Maryland with Part of Pensilvania, New Jersey and North Carolina...
Engraved map with original hand color, dissected into 32 panels and backed on linen.
First edition, fifth state.

London: Robert Sayer & Thomas Jefferys, [1761?].
48 $\frac{1}{16}$ " x 31" sheet.

Retail: \$75,000.

Estimate: \$50,000 - 70,000.

Reserve: \$40,000.

Coolie Verner writes in his authoritative treatment of the Fry and Jefferson map that it "is the basic cartographic document of Virginia in the eighteenth century" (p. 70). Colonel Joshua Fry and Peter Jefferson (doomed by history to be known as the father of President Thomas Jefferson) both lived in Virginia, and so had intimate knowledge of the place

and its salient features. The Fry-Jefferson map stands at the very pinnacle of American colonial cartography. One particularly important aspect of the map is its use as a weapon in a boundary dispute between Pennsylvania, Maryland and Virginia. The wording of the land grants made to Charles Calvert (Lord Baltimore) and William Penn initially specified that Pennsylvania should extend as far west as Maryland, but later spelled out the western boundary of the colony with relation to the point at which the Delaware river crosses Pennsylvania's southern border (5 degrees west of that point). Thus the first state of the Fry-Jefferson map measured longitude from Philadelphia as the prime meridian; from the third state this was measured from London (erroneously, fixed in the fourth state).

Hugh Percy (1742-1817), from 1766 styled Earl Percy (after his father was created a Duke), had long argued in Parliament (where he sat as member from Westminster from 1763) against the policies that led to the American Revolution. Nevertheless, he was sent as colonel of the 5th Regiment of Foot (now the Royal Northumberland Fusiliers) to Boston, playing a crucial role in the Battle of Lexington and Concord. By 1777 he had resigned his commission, displeased with General Howe's command. When the first duke died in 1786, Percy acceded to the Dukedom and had as his seat Alnwick Castle. He was created a Knight of the Garter in 1788, which is the terminus post quem for his bookplate, which shows his badge (rather than his arms) encircled by the garter and surmounted by his ducal coronet. As an active field-commander, Percy amassed a vast collection of American maps, some of which (though sadly not the present item) he annotated heavily in the field.

Presented in a contemporary board slip-case, covered in marbled paper. Title (Virginia) in ink manuscript to a paper label on the slip-case, with shelf-mark (105). Engraved (by E. Ortnor) armorial bookplate of Hugh Percy, 2nd Duke of Northumberland to the slip-case as well as to the verso of the map. Some wear at the intersections of the linen.

At least three copies of the map in various state have been at Alnwick Castle, seat of the Dukes of Northumberland: a first-state copy (Verner, p. 84), a sixth-state copy (sold by Sotheby's London, 4 November 2014, lot 145) and the present copy (Sotheby's New York, 15 October 2018, lot 30). Within the Alnwick library, "Earl" Percy's maps were kept together -- their "discovery" by Elizabeth and William Cumming at Alnwick was described in a great article -- until the dispersion at auction beginning in 1997. The present item came from the Sotheby's sale of the collection of James F. Scott, whose Georgian Revival home, Gallison Hall, was in Charlottesville. Cumming 281D; Stevens & Tree 87(e); Verner, "The Fry and Jefferson Map" in *Imago Mundi* 21 (1967) 70-94 (state 5).



Lot 124. DUNN, Samuel (1723 - 1794).

North America as divided amongst the European Powers...

Engraved map with original hand color in outline.

London: Sayer, June 10th, 1774. 13 $\frac{1}{2}$ " x 18 $\frac{1}{2}$ " sheet.

Retail: \$2,500. Estimate: \$1,000 - 2,000. **Reserve: \$500.**

First edition of this copper engraved map details North America just prior to the start of the Revolutionary War. The map notes various explorations along the West Coast, including those of Sr. Francis Drake, Juan De La Fuca, Tchirikow, and the Land which is supposed to be the Fousang of the Chinese Geographers.



Lot 125. DUNN, Samuel (1723 - 1794).

A Compleat Map of the West Indies...

Engraved map with original hand color in outline.

London: Sayer, January 10th, 1774. 13 $\frac{3}{4}$ " x 18 $\frac{3}{4}$ " sheet.

Retail: \$1,500. Estimate: \$800 - 1,200. **Reserve: \$400.**

The map carries a notation explaining how the Windward and Leeward Islands came to be known. This is a later edition of the map which appeared in the American Military Pocket Atlas with the same title.

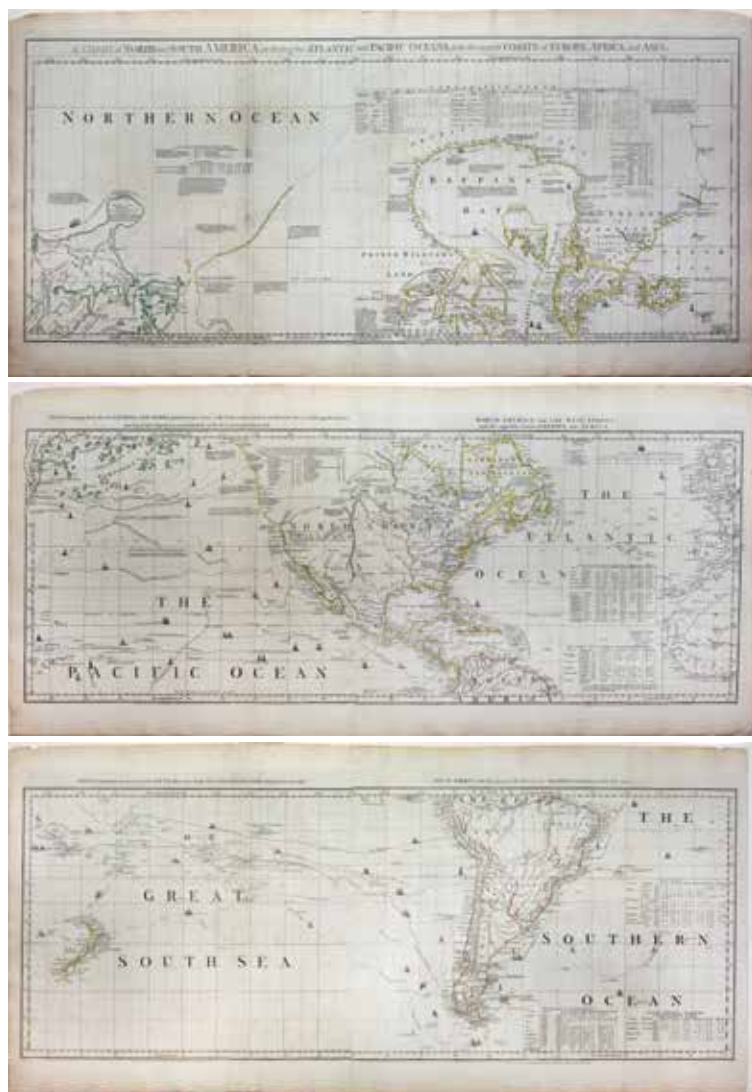
The chart of the Americas, Pacific and Atlantic was an ideal joint venture for Thomas Jefferys who had a reputation as an adventurous and innovative mapmaker. The map covers all the latest voyages to the Arctic and Bering Straits, as well as the Dutch voyages to the South Pacific. The map gives a clear state of play for exploration as of 1753, just before an explosion of activity in the Pacific and North- West Passage.

Lot 126. JEFFERYS, Thomas (c. 1719-1771), compiled by MEADE, Braddock (a.k.a. John Green) (1688-1577). [6 Sheet Wall Map in 3 parts] *A Chart of North and South America, including the Atlantic and Pacific Oceans, with the nearest Coasts of Europe, Africa, and Asia.* Engraved map with original hand color in outline. London: Robert Sayer & John Bennett, (1753) 1775. 21 ½" x 45 ¾" sheet; 21 ¾" x 45 ½" sheet; 21 ¾" x 45 ½" sheet.

Retail: \$12,000. Estimate: \$7,000 - 10,000.
Reserve: \$5,500.

An extraordinary map by one of the most bizarre mapmakers of 18th-century London. John Green was born Braddock Mead in Ireland before 1688, married in Dublin in 1715 and around 1717 moved to London. He was imprisoned in 1728 for trying to defraud an Irish heiress. He also worked with Chambers on his Universal Dictionary. After he got out of gaol he took the name of Green. He also worked for Cave, Astley, and Jefferys before committing suicide in 1757.

Each map is individually titled along the margins as follows: Sheet I: Chart containing part of the Icy Sea with the adjacent Coast of Asia and America Sheet 2: Chart comprising Greenland with the Countries and Islands about Baffin's and Hudson's Bays Sheet 3: Chart containing the Coasts of California, New Albion, and Russian Discoveries to the North; with the Peninsula of Kamschatka, in Asia, opposite thereto; and Islands, dispersed over the Pacific Ocean, to the North of the Line Sheet 4: North America and the West Indies with the opposite Coasts of Europe and Africa Sheet 5: Chart containing the greater part of the South Sea to the South of the Line, with the Islands dispersed thro' the same Sheet 6: South America with the adjacent Islands in the Southern Ocean and South Sea.



Lot 127. After POWNALL, Thomas (1722-1805); SAYER, Robert (1725-1794) & BENNETT, John (c. 1745-1787). *A New and Correct Map of North America with the West India Islands....* 1763. Two part engraved map with original color in outline. London: Sayer & Bennett, 15th February, 1777. 21 ½" x 47 ¾" sheet & 21 ¾" x 47 ½" sheet.

Retail: \$9,500. Estimate: \$6,000 - 9,000.
Reserve: \$4,000.

Comparables: Christie's, 2003 - GBP 3,995; Old World Auctions, 2019 - \$3,240.

RARE. Based on Bowen & Gibson's 1755 map, Sayer and Bennett's Peace of Paris map details the provisions of the treaty which ended the French and Indian war. Several articles of the treaty are engraved in the map's blank ocean areas. An interesting note to the inset map of California states "The Passage by Land to California, Discover'd by Father Eusebius Francis Kino a Jesuit, between the Years 1698 and 1701, before which, and for a Considerable Time Since California has always been described in all Charts and Maps as an Island" (although the map clearly features an extensive "Sea of California"). Phillips p. 589; Tooley The Mapping of America 49(f): "The eastern boundary of the Province of New York has been moved from the eastern shores of Lake Champlain and now runs along the Connecticut River. The title of N. Carolina has been inserted in two lines."



Three Maps from *The American Military Pocket Atlas*, prepared shortly after the outbreak of the Revolutionary War, the atlas was intended for British officers in the field. Its portable format allowed it to be carried into battle, earning it the nickname of the "Holster Atlas."

Lot 128. SAYER, Robert (1725–1794)

& BENNETT, John (c. 1745–1787).

A General map of the Northern Colonies in America...

Corrected from Governor Pownalls late Map, 1776.

Engraved map with original hand color in outline, laid down on linen in 18 parts.

London: Sayer & Bennett, August 14th, 1776.

20 ¾" x 27 ¼" sheet.

Retail: \$4,500. Estimate: \$2,000 - 4,000.

Reserve: \$1,500.



Lot 129. SAYER, Robert (1725–1794)

& BENNETT, John (c. 1745–1787).

A General map of the Middle British Colonies in America...

Corrected from Governor Pownalls late Map 1776.

Engraved map with original hand color in outline, laid down on linen in 18 parts.

London: Sayer & Bennett, October 15th, 1776.

20 ¾" x 27 ¼" sheet.

Retail: \$5,500. Estimate: \$3,000 - 5,000.

Reserve: \$2,000.

This is a later derivative of the seminal Lewis Evans map of the Middle British Colonies, which was one of the landmarks of American cartography. It has been updated to illustrate the Seat of War at the outbreak of the American Revolution from Governor Pownall's map of the same year. The map covers the region from Montreal and the lower end of Lake Huron to the North Carolina border, and from the Falls of the Ohio to Narragansett Bay, with an inset Sketch of the Upper Parts of Canada (Illinois Country).



Lot 130. SAYER, Robert (1725–1794)

& BENNETT, John (c. 1745–1787).

A General Map of the Southern British Colonies in America.

/ comprehending North and South Carolina, Georgia, East and West Florida...From the modern surveys by de Brahm,

Capt. Collet, Mouzon & Others.

Engraved map with original hand color in outline, laid down on linen in 18 parts.

London: Sayer & Bennett, Oct. 15th, 1776.

21 ¾" x 26 ½" sheet.

Retail: \$4,500. Estimate: \$2,000 - 4,000.

Reserve: \$1,500.

With Insets of Charlestown & St. Augustine. From *The American Military Pocket Atlas*, prepared shortly after the outbreak of the Revolutionary War, the atlas was intended for British officers in the field. Its portable format allowed it to be carried into battle, earning it the nickname of the "Holster Atlas."



**American Revolutionary Document asking for Patriotism
to the cause of war on behalf of Massachusetts.**

Lot 131. *Letter from the Massachusetts House of Representatives to raise
Hay and Salt Hay for the American Army, Signed by James Warren and Perez
Morton.*

Engraving. December 18, 1775. 13" x 16 ½" sheet.

Retail: \$1,500. Estimate: \$800 - 1,200. **Reserve: \$500.**

James Warren (1726-1808) was the President of the Massachusetts Provincial Congress and a Paymaster General of the Continental Army during the American Revolutionary War, among other positions.

Perez Morton was Deputy Secretary of the Council of the Colony of Massachusetts Bay, 1775-1776.



**Map that brought the French
into the American Revolutionary War.**



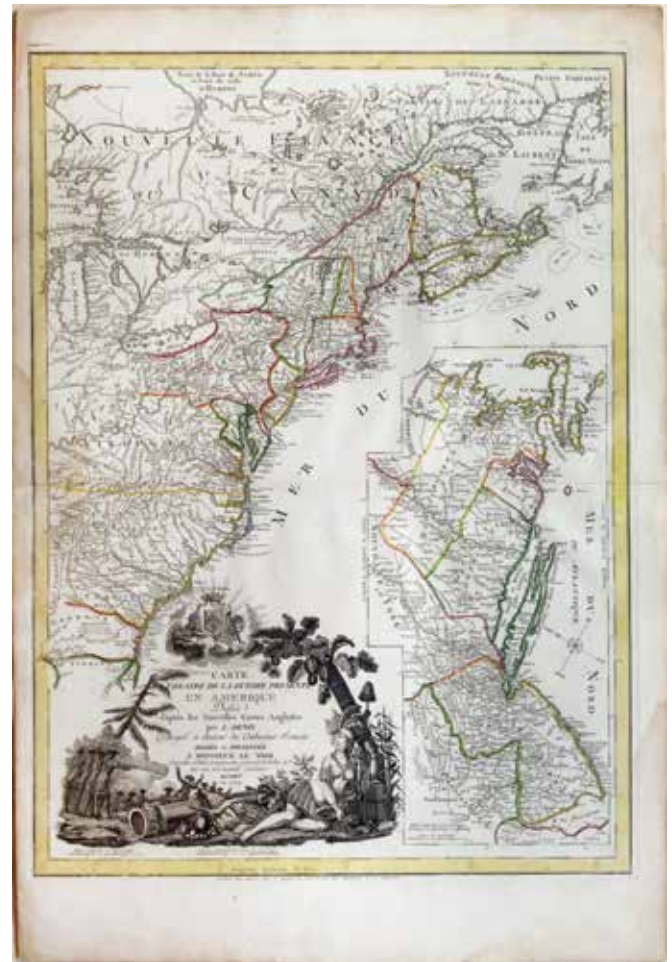
Lot 132. DE LA TOUR, Louis Brion (circa 1743 – 1803).
Carte du Theatre de la Guerre entre les Anglais et Les Americains...
Engraved map with original hand color in outline.
Paris: Chez Esnauts et Rapilly, 1779.
30 ¾" x 21 ¾" sheet.

Retail: \$8,500. Estimate: \$5,000 - 8,000.
Comparable: Siebert Auctions, 1999 - \$5,175.
Reserve: \$3,500.

This is the third edition of this map that was first published in 1777 to illustrate the Battle of Saratoga to appeal to the French King Louis XV to enter the war and officially support the Americans, thus turning the Revolution into a global conflict.

Print shows cartouche with a Native wearing feathered headdress and skirt reclining against wall which bears title inscription; flags, banners, and shield on his right, trees in the background.

**Rare first state of Basset's map showing the theater of
war in America during the American Revolution.**



Lot 133. DENIS, Louis (1725-1794).
*Carte du Theatre de la Guerre Presente en Amerique dresse
d'apres les Nouvelles Cartes Anglaises par L. Denis.*
Engraved map with original hand color in outline.
Paris: Basset, 1779. 30 ¾" x 21 ¾" sheet.

Retail: \$12,500. Estimate: \$9,000 - 12,000.
Comparable: Old World Auctions, 2007 - \$6,160.
Reserve: \$5,500.

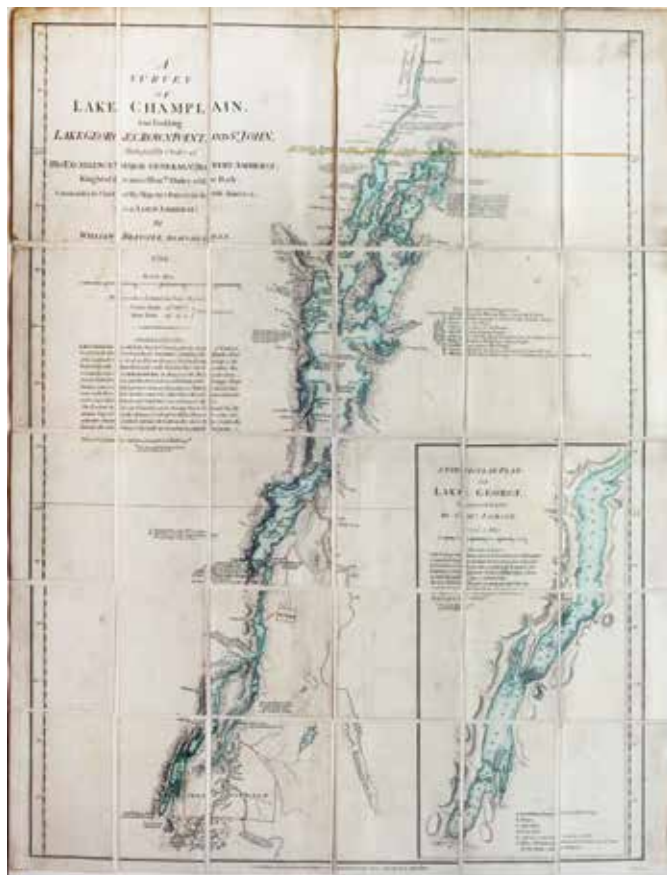
It covers the region from Newfoundland to northern Florida, but only as far west as Lake Michigan. There is a large inset of southern New England and New York, eastern Pennsylvania and all of New Jersey that features the region most affected by the Revolution in 1779.

McCorkle #779.6; Nebenzahl (Biblio) #192; Sellers & van Ee #737.

Lot 134. JEFFERYS, Thomas (c. 1719-1771; After SCULL, Nicolas II (1687-1761).
A Map of Pennsylvania exhibiting not only the Improved Parts of that Province, but also its Extensive Frontiers... Scull published in 1770...Humbly inscribed to the honourable Thomas Penn & Richard Penn...
 Engraved map with original hand color in outline.
 London: Sayer & Bennett, 1775. 29 5/8" x 54" sheet.

Retail: \$12,000. Estimate: \$7,000 - 10,000.
Reserve: \$5,000.

Scull revised and extended his 1759 map, that was also dedicated to the Penn brothers, but which was published in London in 1770, and appeared subsequently in several editions through the decade including this one by Sayer & Bennett from 1770. Much of the geographical information is the same, but interestingly the earlier map is both larger and evinces greater aesthetic satisfaction. It was the first map of Pennsylvania since Thomas Holme's 1687 map of the then much smaller settlement, and represents a vast amount of on-site surveying. Dedicated to the Penn brothers, Scull's map is among the largest and finest maps produced in America in the 18th century. It was an extraordinary achievement. The map depicts Philadelphia, Bucks, Northampton, Berks, Chester, Lancaster, Cumberland, and York Counties."



Lot 135. SAYER, Robert (1725-1794) & BENNETT, John (c. 1745-1787), After BRASSIER, William Furness (fl. 1745-1772)
A Survey of Lake Champlain including Lake George, Crown Point and St. John... William Brassier Draughtsman, 1762.
 Engraved map with original hand color in outline, laid down on linen, in 30 parts. London: Sayer & Bennett, August 5th, 1776.
 27 1/2" x 21 1/4" sheet.

Retail: \$6,500. Estimate: \$4,000 - 6,000.
 Comparable: Swann, 2014 - \$5,750.
Reserve: \$2,500.

Inset of Lake George Surveyed in 1756 by Capt. Jackson. From The American Military Pocket Atlas, prepared shortly after the outbreak of the Revolutionary War, the atlas was intended for British officers in the field. Its portable format allowed it to be carried into battle, earning it the nickname of the "Holster Atlas."



These surveys provided the British with essential information for the conduct of the military campaigns in the Revolutionary War.

Lot 136. HOLLAND, Major Samuel (1728-1801) & POWNALL, Thomas (1722-1805).
The Provinces of New York and New Jersey; with Part of Pensilvania, and the Province of Quebec.
 Engraved map with original hand color.
 London: Robert Sayer & John Bennett, 1776
 54" x 21 3/4" sheet.

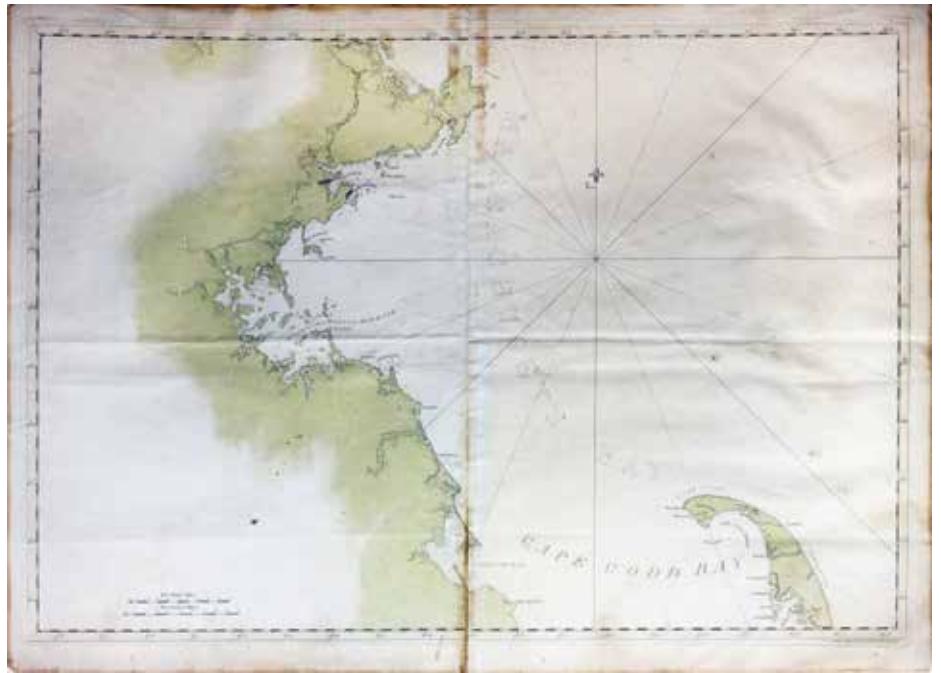
Retail: \$9,000. Estimate: \$5,000 - 8,000.
 Comparable: Arader Auctions, 2019 - \$5,312.
Reserve: \$3,500.

This is Thomas Jefferys' two-sheet map based on the surveys of Major Samuel Holland and Governor Thomas Pownall, published by Sayer & Bennett. Holland originally conducted the surveys to settle a boundary dispute between New York and New Jersey and later as Surveyor for the Northern District for the Board of Trade.

Exceptional Revolutionary War Era Chart of Massachusetts Bay.

Lot 137. DES BARRES, Joseph Frederick Wallet (1722-1824).
[Massachusetts Bay & Cape Cod Bay]
 Engraved map with beautiful original color.
 London: Des Barres, April 29th, 1776.
 31 ¾" x 44" sheet.

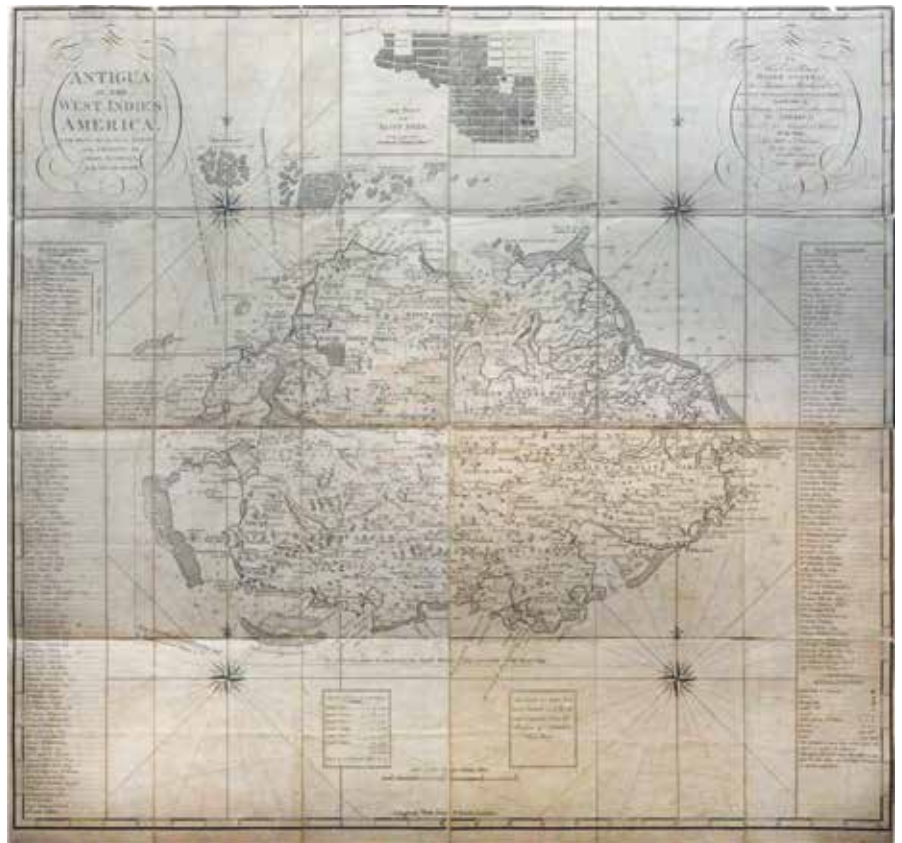
Retail: \$22,000.
 Estimate: \$12,000 - 18,000.
Reserve: \$7,000.



One of the better charts from Des Barres' *Atlantic Neptune*, showing Cape Ann to Plymouth Bay with the northern tip of Cape Cod. From the famous atlas by Des Barres, here in its 2nd state with the borders newly scaled at five minute intervals. This map chart would have been used by Revolutionary War-Era British captains and navigators in the pivotal Massachusetts theater. It was the best chart of the area available at the time.

Lot 138. LUFFMAN, John (fl.1776-1820).
Antigua in the West Indies America laid down by actual survey, and engraved by John Luffman in the Years 1787 and 1788.
 Engraved map in 4 sheets, laid down on linen in 24 sections.
 London: Faden, 1793.
 37 ¼" x 39" sheet.

Retail: \$18,500.
 Estimate: \$12,000 - 18,000.
Reserve: \$7,000.



Very rare map of Antigua printed on 4 sheets, surveyed in detail by John Luffman during his 3 year tour in the West Indies. It was published to accompany Luffman's *A Brief Account of the Island of Antigua* 1788, but very few seem to have survived. Only 6 copies can be traced in institutional holdings (there are 3 copies [one damaged] in the National Archives at Kew and one each at BL, University of London Senate House Library, and Biblioteca Nacional de España, Madrid). Few copies can be traced as selling at auction (RareBookHub).

Folding engraved map on 4 sheets, the whole dissected and mounted onto contemporary linen, relief shown pictorially, coastline marked with obstacles to shipping, shoals, sandbanks, anchorages and soundings, harbours, forts, parishes, churches and mills shown together with the names of property owners, extensive subscribers' list running down both the left- and right-hand sides of the map, inset plan of the town of Saint John at top with a key, dedication to Thomas Shirley, Major General, governor of Leeward Islands, within cartouche to upper right, 4 compass roses within sea.

Tooley, Printed Maps of Antigua 46.



Lot 139. MITCHELL, Samuel Augustus (1792-1868).
Mitchell's National Map of the American Republic...
 Lithographed map with original hand color. Drawn by J. H. Young, Engraved by J. H. Brightly.
 Philadelphia: Samuel Augustus Mitchell, 1850.
 39 ¾" x 49 ½" sheet.

Retail: \$3,200. Estimate: \$1,800 - 2,500. **Reserve: \$1,200.**
 Comparable: Swann, 2005 - \$3,680.

Final version of Mitchell's successful map of the United States from the east coast to Texas and Indian Territory. As with earlier editions, the general map is bordered by 32 detail plans of prominent American cities. An important factor in this later edition is a small change in the geography of the north-west, delineating the borders of Iowa, Wisconsin and Minnesota. Another significant change is to the inset of the Oregon Territory as it previously appeared: here it is divided into Oregon and "Upper or New California" and prominently shows the Gold Regions.

This is an early edition of this terrific Civil War map extending from the Mason-Dixon line south to Florida and west to Missouri and Texas. It is notable for being one of the few versions of the map to show the majority of Texas (most showed just far eastern Texas).



Lot 142. LLOYD, James T. (19th Century).
Lloyd's Map of the Southern States, showing all the Railroads their stations and distances...
 Lithographed map with original hand color.
 New York: Lloyd, 1861.
 39 ½" x 53 ½" sheet.

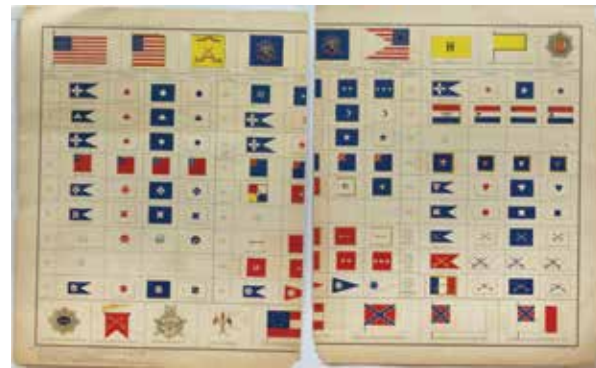
Retail: \$6,500. Estimate: \$3,000 - 5,000. **Reserve: \$2,500.**
 Comparable: Sotheby's, 2018 - \$3,800.

Rare View of New York.



Lot 140. WILLIAMS, J. W. C. (1811-1893).
New-York et ses environs / New-York and its environs.
 Lithograph with original hand color.
 Paris and New York: L. Turgis, c. 1855
 19 ⅝" x 24 ½" sheet.

Retail: \$7,500. Estimate: \$4,000 - 7,000. **Reserve: \$2,000.**



Lot 141. [Battle Flags of the United States Military]
Plate CLXXV (175).
 Lithograph with original hand color.
 New York: Julius Bien, c. 1891.
 From the Atlas to Accompany the official records of the Union and Confederate Armies, 1861-1865.
 18 ½" x 29 ¾" sheet.

Retail: \$1,000. Estimate: \$400 - 800. **Reserve: \$250.**

The large plate showing principal flags and pennants of the United States Union Army and the Army of the Confederate States of America during the Civil War.



Lot 143. Walter, F. A. (Late 19th-Early 20th Century).
[Sailboat, Brooklyn, N.Y.] Chromolithograph.
 New York, 1901. 17" x 21" visible, 21 ½" x 25 ½" framed.
 Retail: \$2,700. Estimate: \$1,500 - 2,500. **Reserve: \$800.**

First state of the most important charting of South Carolina's Port Royal Sound and Hilton Head, during the early days of the Revolutionary War.

Lot 144. GASCOIGNE, John; FADEN, William (1749 – 1836) & JEFFERYS, Thomas (c. 1719-1771).

A Plan of Port Royal in South Carolina, survey'd by Capn. John Gascoigne.
Engraved map. London: Jefferys & Faden, [1773]. 32 ¾" x 26" sheet.

Retail: \$15,000. Estimate: \$8,000 - 12,000.

Reserve: \$5,000.

The finest and most detailed map of the area from the early days of the Revolutionary War; in addition to the excellent nautical information, many plantations are individually labeled. Stevens & Tree, Comparative Cartography 71(a) first state; Cumming, *British Maps of Colonial America*, pp.47-49.



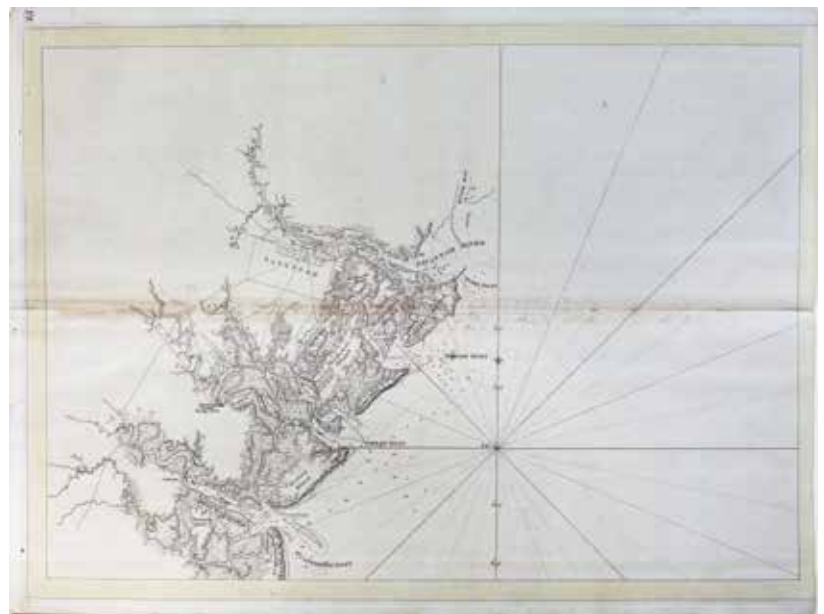
Lot 145. DES BARRES, Joseph Frederick Wallet (1722-1824)

& AVERY, Joseph (18th Century), hydrographer.
[The coasts, rivers and inlets of the province of Georgia]
Engraved map with original hand color in border.
London : J.F.W. Des Barres, c. 1779.
24 ¾" x 32 ¾" sheet.

Retail: \$25,000. Estimate: \$12,000 - 18,000.

Reserve: \$9,000.

State 1, lacking title or completion of coast from Savannah River to Port Royal.
Shows Georgia coast from St. Catherine's Inlet to the Savannah River.



Lot 146. KERR, Washington Caruthers (1827-1885).
Map of North Carolina by W. C. Kerr, 1882; assisted by Wm. Cain. Lithograph with original hand color.
N.Y., Julius Bien & Co., Lith., 1882. 26 ¼" x 57" sheet.

Retail: \$7,500. Estimate: \$3,000 - 4,000.

Reserve: \$2,500.

"Constructed from original surveys and triangulations of the U.S. Coast and Geodetic Survey, of Prof. Guyot, of the state geologist, and of the U.S. engineers; and embodying the surveys made by the state from 1820 to date, of swamp lands, rail roads, rivers, canals and turnpikes; & also the surveys made by R.R., Plank Road, and other corporations, to date; and numerous county and land surveys." Published under the authority of the State Board of Agriculture.



Lot 147 (Right). ROSS, Lieutenant John (d. 1843). *Course of the River Mississippi, from the Balise to Fort Chartres: Taken on an Expedition to the Illinois, in the latter end of the year 1765.* Engraved map with original hand color in outline. London: Rob. Sayer, June 1, 1775. 46" x 21 1/2" sheet.

Retail: \$9,000. Estimate: \$5,000 - 8,000. **Reserve: \$3,500.**
Comparable: Arader Galleries, 2016 - \$5,795.

Ross' map of the Mississippi was the first official English survey of the Lower Mississippi, and one of the most historically significant American maps, delineating the British gains from France in the French and Indian War and later establishing the future western boundary of the new United States. The map opened the area to settlement from the east—the beginnings of the Anglo-American mid-South. This handsome map shows on a large scale details, such as islands in the river, navigational instructions, other rivers and connecting tributaries, boundaries, towns and settlements, forts, local history (including the spot where De Soto discovered the Mississippi in 1541), quarries and potential mining areas, productive land, cane fields, and mountains and other topographical details. Tribes located include the Flathead, Choctaw, Chickasaw, Chackhuma, "Akansas or the Handsome Men," Wiapes, Corrois, Yazoo, Ofogoulas, Chepousseas, Caskaskias, Colapissas (later known as Huoma), and others.



Lot 148 (Above). STOBART, John (b. 1929).
St. Louis / The Gateway to the West in 1878 [WITH] Dreadnought.
Signed. AP / 750 ; AP / 850 New York: Kennedy Galleries, 1978.
22 1/2" x 35" visible, 29 1/2" x 40" matted.

Retail: \$3,500. Estimate: \$750 - 1,500. **Reserve: \$300.**

Two artist proof copies of two of John Stobart's finest works. Stobart was born in 1929 and is a British maritime artist known for his paintings of American harbour scenes during the Golden Age of Sail.

Lot 149. WILLIAMSON, R.S. (American, 19th Century).

General Map of Explorations and Surveys in California made under the direction of the Hon. Jefferson Davis, Secretary of War by Lieut. R.S. Williamson, Topogl. Engr. assisted by Lieut. J.G. Parke, Topl. Engr. and Mr. Isaac Williams Smith, Civ. Engr. 1853.

Fine folding lithographed map. Washington: A.O.P. Nicholson, 1861. Engr. by Selmar Siebert. 25 1/2" x 76 1/2" sheet.

Retail: \$2,800. Estimate: \$1,500 - 2,500. **Reserve: \$1,000.**

North/South view of California from the San Francisco Bay to San Diego, the railway line is shown extending as far east as Fort Yuma (some browning at old folds). Published in volume XI of "Reports of Explorations and Surveys, to Ascertain the Most Practicable and Economical Route for a Railroad From the Mississippi River to the Pacific Ocean, 36th Congress, 2d Session, Senate, Ex. Doc." With the peace treaty with Mexico recently signed, northern and southern borders established, and the discovery of gold in California, the United States Congress saw the need for exploration of their interior lands. There was much discussion of a super highway for travelers to safely navigate from the Mississippi River to the Pacific coastline. By an act of Congress, Secretary of War Jefferson Davis was charged to conduct surveys for the first transcontinental railroad route to the Pacific Ocean, near the 35th parallel. Five teams were sent, the Northern, Central, and coastal Pacific surveys were commissioned along with two Southern Pacific survey teams. The reports of these teams represent the first attempt at a comprehensive, systematic geographical

exploration of the Western regions of America, and made possible the first reasonably accurate topographical maps of the West. Four major routes were surveyed, from a northern route terminating at the mouth of the Columbia River to a southern route running through Texas to San Diego. Graff 4435; Hill, pp. 301-302; Howes P3; Sabin 69946; Taft, pp. 4-9; Wagner-Camp 262-266a, 267:1; Wheat, Mapping the Transmississippi West IV, pp. 67-91.



Large tinted lithographed birds-eye view of Helena with inset architectural vignettes and numbered reference key.

Lot 150. *Perspective Map of the City of Helena, Mont. Capital of State, County Seat of Lewis & Clarke Co., 1890. / compliments of Kessler's Brewery.*

Tinted Lithograph.

Milwaukee: American Publishing Co., 1890.

28" x 42" sheet.

Retail: \$6,500. Estimate: \$3,000 - 5,000.

Reserve: \$1,500.



Lot 151. MORAN, Thomas (1837-1926).

The Grand Canyon of Arizona, from Hermit Rim Road.

Chromolithograph.

Published by the Santa Fe Railroad, 1912.

32" x 42" sheet.

Retail: \$9,500. Estimate: \$6,000 - 9,000.

Comparable: Brunk Auctions, 2019 - \$10,455.

Reserve: \$4,500.

This spectacular print was sold, with the original oil painted by Thomas Moran in 1912 to the Santa Fe Railway Co. At the time, Moran was the nation's best known landscape painter, noted especially for his depictions of the Far West and its parks. The Santa Fe Railway was the first to lay a line to the Grand Canyon, in 1901.

A Spectacular Bison Watercolor for Buffalo Bill's West West.



Lot 152. BUFFALO BILL'S WILD WEST BANNER

Hand-painted on linen. c. 1883-1895.

51" x 75 1/2" framed in an early burl wood frame.

Retail: \$55,000. Estimate: \$30,000 - 50,000.

Reserve: \$20,000.

William Frederick Cody (1846-1917), known as Buffalo Bill, served as U.S. army scout, a buffalo hunter for the railroad, and as a renowned prairie scout. He is probably best known as the man who gave the "Wild West" its name. In 1883, Cody created the Wild West show, a vehicle that propelled him to fortune and worldwide fame and helped create a lasting image of the American West.

This watercolor on linen announces the return of Cody to the United States from a highly successful French tour in 1889. Buffalo Bill had a brilliant publicist, Arizona John Burke, who managed to get Cody into print probably more than any other man of his time. Eventually, Cody's face and image, became so well known that posters just bearing his image with a buffalo, with no mention of Buffalo Bill or Buffalo Bill's Wild West became synonymous with The Great American West.



Lot 153, Property of a Pennsylvania Lady



Lot 153. CURTIS, Edward S. (1868-1953).

Canoe of Tules - Pomo. Pl. 489.

Sepia printed photogravure engraving on Van Gelder paper.

From *The North American Indian*...Vol. 14 Written, Illustrated

and Published by Edward Curtis. Forward By Theodore

Roosevelt. Ex Libris, Rochester Public Library, stamp I.I.

Published: University Press of Cambridge, Mass., and Plimpton

Press, Norwood, Mass. 1907-1930, 1907-1930.

Photogravure by Suffolk Engr. Co., Cambridge Mass., 1924.

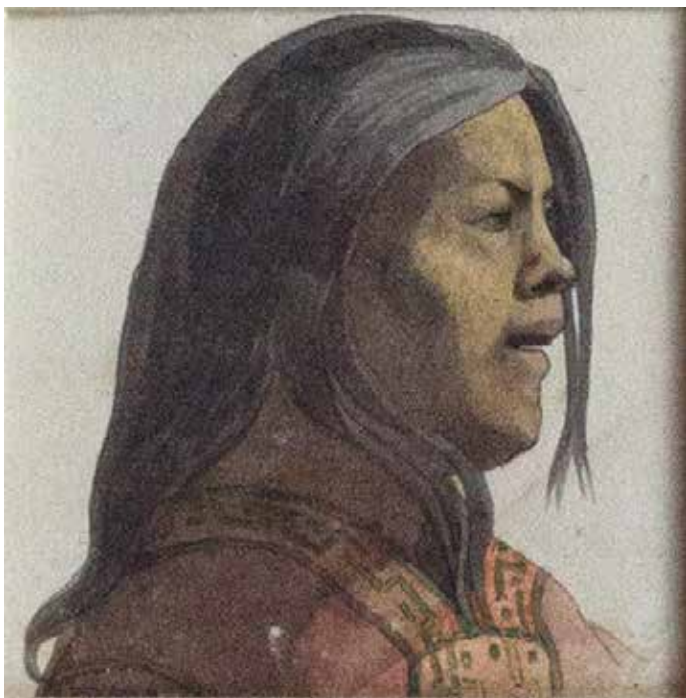
13 3/8" x 16 3/4" visible, 22 3/4" x 26 7/8" framed.

Estimate: \$1,500 - 2,500. **Reserve: \$800.**

Beautiful original watercolor and engraving of the Aleutian Islands, Alaska.



Lot 154. CHORIS, Louis (1795-1828).
Original Watercolor of Vue du port d'Ounalaschk [With] the engraving of the same title on the verso.
 Watercolor & Engraving. c. 1816 (1822).
 11 5/8" x 17 1/4" image, 13" x 19 1/4" visible, 24" x 30" framed.
 Retail: \$35,000. Estimate: \$15,000 - 25,000. **Reserve: \$10,000.**



Lot 155. CHORIS, Louis (1795-1828).
Untitled [Study of a Woman].
 Original watercolor study.
 For Vues et Paysages des Regions Equinoxiales...(Paris, 1826).
 3" x 3" visible, 17" x 14" framed.
 Retail: \$22,000. Estimate: \$12,000 - 18,000. **Reserve: \$8,000.**

Lot 156. CHORIS, Louis (1795-1828).
Untitled [Study of a Woman with hat].
 Original watercolor study.
 For Vues et Paysages des Regions Equinoxiales...(Paris, 1826).
 4" x 4 1/4" visible, 13 1/2" x 16 1/2" framed.
 Retail: \$22,000. Estimate: \$12,000 - 18,000. **Reserve: \$8,000.**

Louis Choris was born in Yekaterinoslav, Russian Empire, now Dnipro, Ukraine to German-Russian parents on March 22, 1795. In 1816, he visited the Pacific and the west coast of North America on board the Russian expeditionary ship Rurik, serving as an artist with the Romanzoff expedition under the command of Lieutenant Otto von Kotzebue, which was tasked with exploring a northwest passage.

In terms of his work as an artist, Choris is said to have "painted nature as he found it. The essence of his art is truth; a fresh, vigorous view of life, and an originality in portrayal." His illustrations on the Romanzoff expedition are therefore likely to faithfully represent the subjects he painted. After the voyage of the Rurik, Choris went to Paris where he issued a portfolio of his drawings in lithographic reproduction and studied in the ateliers of Gerard and Regnault. Choris worked extensively in pastels and documented the Ohlone people in the missions of San Francisco, California in 1816. Choris left France in 1827 for South America and was killed by robbers on March 22, 1828, en route to Vera Cruz, Mexico.



Lot 157. DURER, Albrecht (1471-1528).
Five Soldiers and a Turk on Horseback.
 Single sheet etching, VERY GOOD Meder B-C impression, on paper with a bull's head watermark (M. 62).
 Amsterdam, c. 1495.
 5 1/8" x 5 3/4" sheet, 10 1/2" x 11" framed.
 Retail: \$25,000. Estimate: \$15,000 - 22,000. **Reserve: \$10,000.**

This famous, early engraving has also been variously known as "Five Soldiers and a Mounted Turk," "The Assembly of Warriors," "The Six Warriors," "William Tell," and "The Robbers," "the latter on the gratuitous supposition that it represents Durer (the man seen full face) fallen into the hands of brigands.



Lot 158. CALLOT, Jacques (1592-1635).
The Martyrs of Japan.
 Single sheet etching, with faint but visible thread lines and a watermark of an anchor, signed and identified within the plate.
 France, 1627. 6 5/8" x 4 1/2" sheety, 11 3/4" x 9 1/2" framed.
 Retail: \$8,500. Estimate: \$6,000 - 8,000. **Reserve: \$4,500.**

Provenance: With the collector's mark of Robert Hartshorne (d. 1945) on the verso (Lugt 2215b), his sale, October 1945, Parke-Bernet.

First edition, first state (of 2). L. 594. M. 155. A strong impression of Callot's famous depiction of the 26 Christian martyrs of Japan, produced on the occasion of their beatification.



Lot 159. CALLOT, Jacques (1592-1635).
Saint-Amond. Etching, a brilliant impression with superb contrast, in near fine condition with thread margins all around. Paris, 1621. Fourth state (of five).
 8 3/4" x 11 1/8" sheet, 14" x 16" framed.
 Retail: \$4,800. Estimate: \$3,500 - 4,500.
Reserve: \$2,500.

Provenance: Ex-collection of Adalbert von Lanna (Lugt 2773); Julian Marshall (Lugt 1494); Arkady Alferoff (Lugt 1727); and Robert Hartshorne (Lugt 2215b).



Lot 160. CALLOT, Jacques (1592-1635).
Portrait of Giovanni Domenico Peri.
 Single sheet etching, showing the threadlines, with the watermark of a winged eagle with three prominent tail feathers. Paris, c. 1620.
 8" x 5 7/8" sheet, 13" x 11" framed.
 Retail: \$4,500. Estimate: \$3,000 - 4,000.
Reserve: \$2,500.



Lot 161. CALLOT, Jacques (1592-1635).
Les Combats de Cavalerie.
 A pair of very fine etchings showing two types of cavalry combat, signed within the plate, a nice dark impression showing faint threadlines. Paris, c. 1635. First edition, first state. L. 1313-1314
 1 3/4" x 3 5/8" each, 7" x 13 1/2" framed.
 Retail: \$7,500. Estimate: \$5,000 - 7,000.
Reserve: \$3,500.

"Jacques Callot was born about 1592 at Nancy in Lorraine, which is a busy crossroads of Europe, being on 200 to 500 miles from Paris, Vienna, Antwerp and Amsterdam. Thus Europe came to Callot even before he started to travel, making him, almost inevitably, into the first international personality among the inventive print-makers. His art, which had culled something from everywhere, in turn imparted something to practically all subsequent etching and engraving" (Mayor and Baskin).

Callot "is the first important etcher who was not a painter. To ensure that his plates would print enough impressions to secure his livelihood and to simulate the effect of the then much-admired line-engraving, he developed a new sort of etching needle, the *échope*, which has a sharp but rounded end. Used on a hard etching ground which forces the acid to bite a much sharper line than it does on more conventional etching grounds, this tool can imitate the swelling line of a burin. In this way Callot could etch his plates deep enough for them not to wear out too quickly and also preserve the gradations of tone by a deft use of stopping out. Callot was in Italy between 1608 and 1621 working in Florence for the Grand Dukes of Tuscany before returning to spend the rest of his life in Nancy" (Griffiths, p. 63). A. Hyatt Mayor and Leonord Baskin, "The Etchings of Jacques Callot." Antony Griffiths, "Prints and Printmaking: An Introduction to the History and Techniques." Lieure 406.

Full Description of each Lot can be found at www.aradernyc.com or emailing auctions@aradernyc.com

TERMS AND CONDITIONS

By bidding at the auction, whether present in person or by agent, or by written bid, telephone, internet or by other means, the buyer agrees to be bound by the conditions of the sale.

1. All properties are sold as is, and neither we nor the consignor make any warranties or representations with respect to any lot sold including but not limited to the correctness of the catalogue description, the physical condition, size, quality, rarity, attribution, authorship, importance, medium, provenance, exhibitions, literature or historical relevance of the property, and no statement anywhere, whether oral or written, shall be deemed such a warranty or representation. All sizes listed are approximate. Prospective bidders should inspect the property before bidding to determine condition, size, and whether or not it has been repaired or restored. WE AND THE CONSIGNOR DISCLAIM ANY AND ALL WARRANTIES, EXPRESSED OR IMPLIED, INCLUDING BUT NOT LIMITED TO THE IMPLIED WARRANTY OF MERCHANTABILITY OR FITNESS FOR ANY PARTICULAR PURPOSE. NO WARRANTIES ARE MADE THAT ANY OF THE MERCHANDISE COMPLIES WITH ANY APPLICABLE GOVERNMENTAL RULES, REGULATIONS OR GUIDELINES OF ANY KIND OR NATURE WHATSOEVER. Mid-Hudson Galleries Ltd. as agent, nor the consignor is responsible for any faults or defects in any lot or the correctness of any images or statement as to the origin, authorship, date, age, attribution, genuineness, provenance or condition of any lot.

2. A buyer's premium will be added to the purchase of all lots in the sale, and is payable by the purchaser as part of the total purchase price. The buyer's premium for bidders participating in the auction in person or in absentia, either on the telephone or by submitting written bids in advance, is 20%. The buyer's premium for internet bidders is also 25%. Note: There will also be a 3.5% fee for Credit card processing.

3. We reserve the right to withdraw any property before the sale.

4. Unless otherwise announced by the auctioneer, all bids are per lot as numbered in the catalogue. The auctioneer may open bidding on any lot below the reserve by placing a bid on behalf of the seller. The auctioneer may continue to bid on behalf of the seller up to the amount of the reserve by placing consecutive bids or by placing bids in response to other bidders.

5. All bids placed and all payments made must be in U.S. dollars drawn on a U.S. bank unless payment in U.S. dollars wired from a foreign bank has been pre-arranged.

6. We reserve the right to reject any bid. The highest bidder acknowledged by the auctioneer will be the purchaser. In the event of a dispute between bidders, or in the event of doubt on our part as to the validity of any bid, the auctioneer will have the final discretion whether to resell the article in dispute. If any dispute arises after the sale, our sale records are conclusive. Although in our discretion we will execute order bids or accept telephone bids and internet bids as a convenience to clients who are not present at the auction, we are not responsible for any errors or omissions in connection therewith.

7. If the auctioneer decides that any opening bid is below the value of the article offered, he or she may reject the same and withdraw the article from sale, and if having acknowledged an opening bid, he or she decides that any advance thereafter is insufficient, he or she may reject the advance.

8. On the fall of the auctioneer's hammer, title to the offered lot will pass to the highest bidder acknowledged by the auctioneer subject to fulfillment by such bidder, of all the conditions set forth herein, and such bidder thereupon 1) assumes full risk and responsibility thereof, but not limited to, insurance, fire, theft, removal and storage or damage from any and all causes and b) will pay full purchase price thereof.

In addition to other remedies available to us by law, we reserve the right to impose a late charge of 1 ½% per month of the total purchase price if payment is not made in accordance with the conditions set forth. If any applicable conditions herein are not complied with by the purchaser, in addition to other remedies available to us and the Consignor by law, in addition to holding purchaser liable for the total purchase price, we at our option may either, a) cancel the sale, retaining as liquidated damages all payments made by the purchaser, or b) resell the property at public auction without reserve, and the purchaser will be liable for any deficiency costs including handling charges, the expenses of both sales, our commissions on both sales at our regular rates, reasonable attorney's fees, incidental damages, and all other charges due hereunder.

In the event that such a buyer pays a portion of the purchase price for any or all lots purchased, We shall apply the payment received to such lot or lots that we, in our sole discretion deems appropriate. In the case of default, purchaser shall be liable for legal expenses. In addition, a defaulting purchaser will be deemed to have granted us a security interest in, and we may retain as collateral security for such purchaser's obligations to us, any property in our possession owned by such purchaser. We shall have the rights afforded a secured party under the New York Uniform Commercial Code with respect to such property and we may apply against such obligations all monies held or received by us for the account of, due from us to, such purchaser.

9 Estimates do not represent any opinion or guarantee of actual value or ultimate sale price. Actual prices realized for items can fall below or above this range. They should not be relied upon as a prediction or guarantee of the actual selling price. They are prepared well in advance of the sale and are subject to revision.

10. Should any disputes arise pertaining to purchases at this auction or any other matters relating to the auction, such disputes shall be brought in the courts of the State of New York. Venue shall be within the County of New York.

11. Any claim regarding a purchase must be made by the successful bidder to Arader Galleries, in writing, certified mail, return receipt requested, within 90 days of the final day of the live auction. Thereafter, all claims shall be time-barred.

12. Unless exempt by law, purchasers will be required to pay NYS sales tax and other local taxes as required.

13. If bidding by internet, the purchaser shall have consented to the exclusive jurisdiction of The State of New York.

14. Packing and handling of purchased lots by us or by someone else is at the entire risk of the purchaser. Purchasers are responsible for all shipping costs.

We are not responsible for the acts or omissions of carriers or packers of purchased lots whether or not recommended by us.

15. We are happy to help you on the telephone or via e-mail with condition reports or other information you might need to facilitate your bidding.

Arader Galleries

1016 Madison Avenue, New York, NY 10075
Telephone: 212-628-7625, Fax: 212-452-2872
Email: auctions@aradernyc.com, Website: AraderLIVE.com

I wish to place the following absentee bids for the Arader Galleries Auction on September 25th, 2021. These bids are to be executed by Arader / Mid Hudson Galleries Ltd, on my behalf, up to but not exceeding the amount, or amounts, specified below. Each bid is per lot, as indicated. All bids will be executed, and are accepted subject to the "Terms and Conditions" as stated by Arader / Mid Hudson Galleries Ltd and announced at the start of the sale.

Name: _____

Address, City, State, Zip: _____

Telephone: _____

Email: _____

Credit Card Number: _____ Expiration Date: _____

I wish to Bid by Mail / Fax / Email

☐

I wish to Bid by Phone (subject to availability)

By checking this box and initialing here _____ I authorize Arader / Mid Hudson Galleries LTD to bid up to the amount indicated in the event I cannot be reached by phone during the auction.

Signature: _____ Date: _____

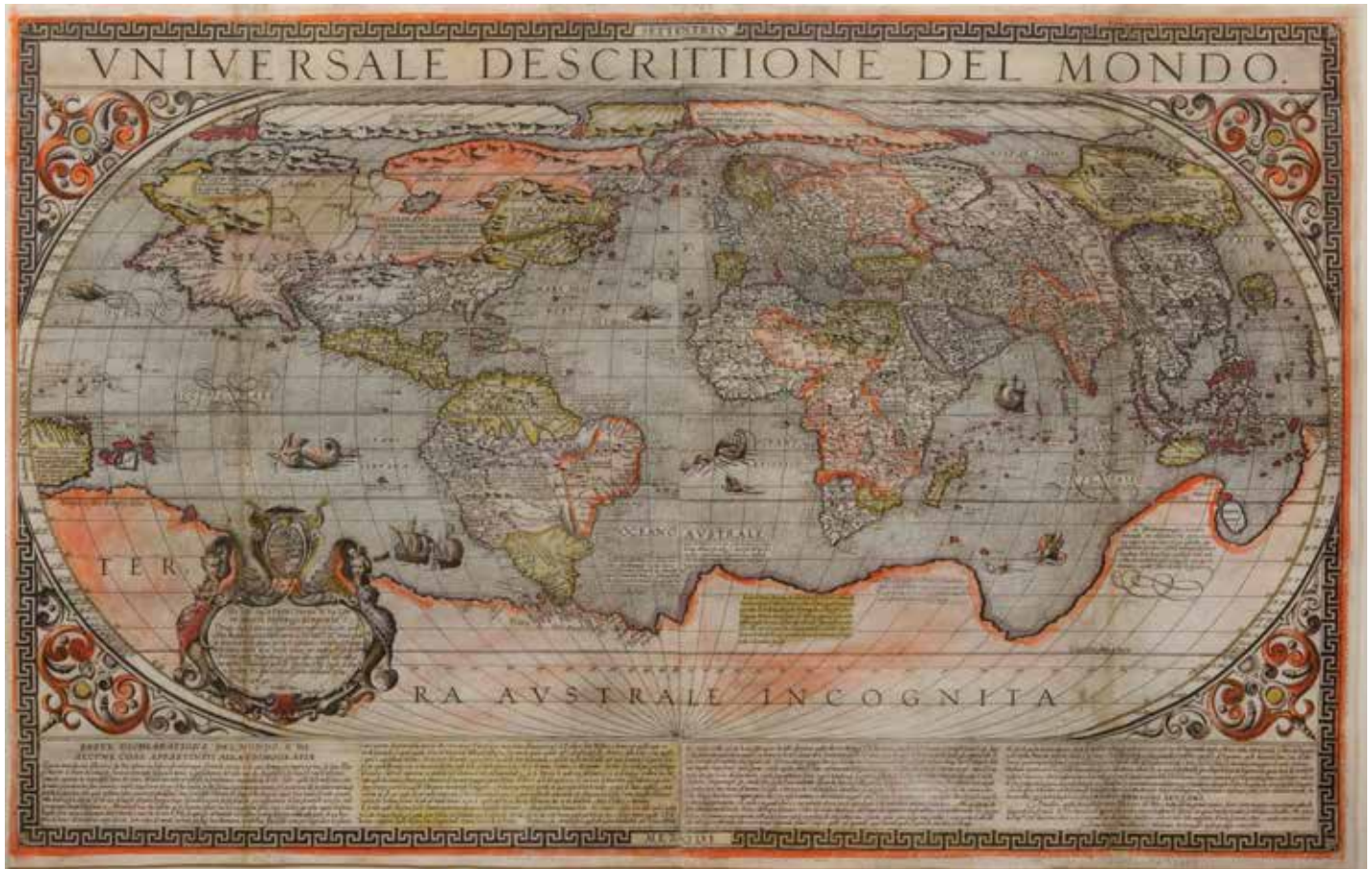
Please PRINT Neatly and List Lots in Numerical Order

Artist / Title / Description

ALL PURCHASES BY ABSENTEE BID ARE SUBJECT TO A 20% BUYER'S PREMIUM
NYC SALES TAX APPLIES UNLESS VALID RESALE CERTIFICATE. (3.5% CREDIT CARD PROCESSING FEE).

Arader LIVE

September 25th, 2021
Saturday, 1pm EST



Auctions@aradernyc.com - AraderLIVE.com