

**TRADE CATALOGUE**



# WELCOME TO MOTORMAX

## PIONEERING FLEET SAFETY SOLUTIONS

PREVENT INCIDENTS AND IMPROVE EFFICIENCY

Motormax designs and manufactures a range of pioneering fleet safety solutions to prevent incidents and improve efficiency. With over 25 years' of experience, innovation is at the forefront of our business, and since 2010 we have designed and developed our own products.

### PRODUCT QUALITY

Through our in-house design team and our close working relationships with our manufacturers, we ensure exceptional product quality and reliability. We offer a complete end-to-end service, including consultancy, product design, installation and training backed up by exceptional aftersales service and support.

### TECHNICAL SUPPORT & WARRANTY

We have a dedicated technical and aftersales team providing support to our customers. We provide a 12-month warranty on our products and 3-year warranty on products installed by Motormax.



Motormax,  
Block 1, Latchford House,  
Shenstone Business Park,  
Lynn Ln, Shenstone, Lichfield WS14 0SB

0121 353 3663  
[www.motormax.co.uk](http://www.motormax.co.uk)  
[info@motormax.co.uk](mailto:info@motormax.co.uk)



ID:A00622

# CONTENTS



**PRODUCT OVERVIEW**

4 - 11

**DVR PRODUCTS**

12 - 20

**MONITORS**

21 - 29

**AHD & IP CAMERAS**

30 - 35

**CAMERA SOLUTIONS**

36 - 59

**CAMERA INTEGRATION**

60 - 76

**CAMERA KITS**

77 - 79

**ULTRASONIC SENSORS**

80 - 86

**RAPID FIT**

87 - 93

**WARNING ALARMS**

94 - 96

**HEATED SEATS**

97 - 98

**ACCESSORIES**

99 - 107

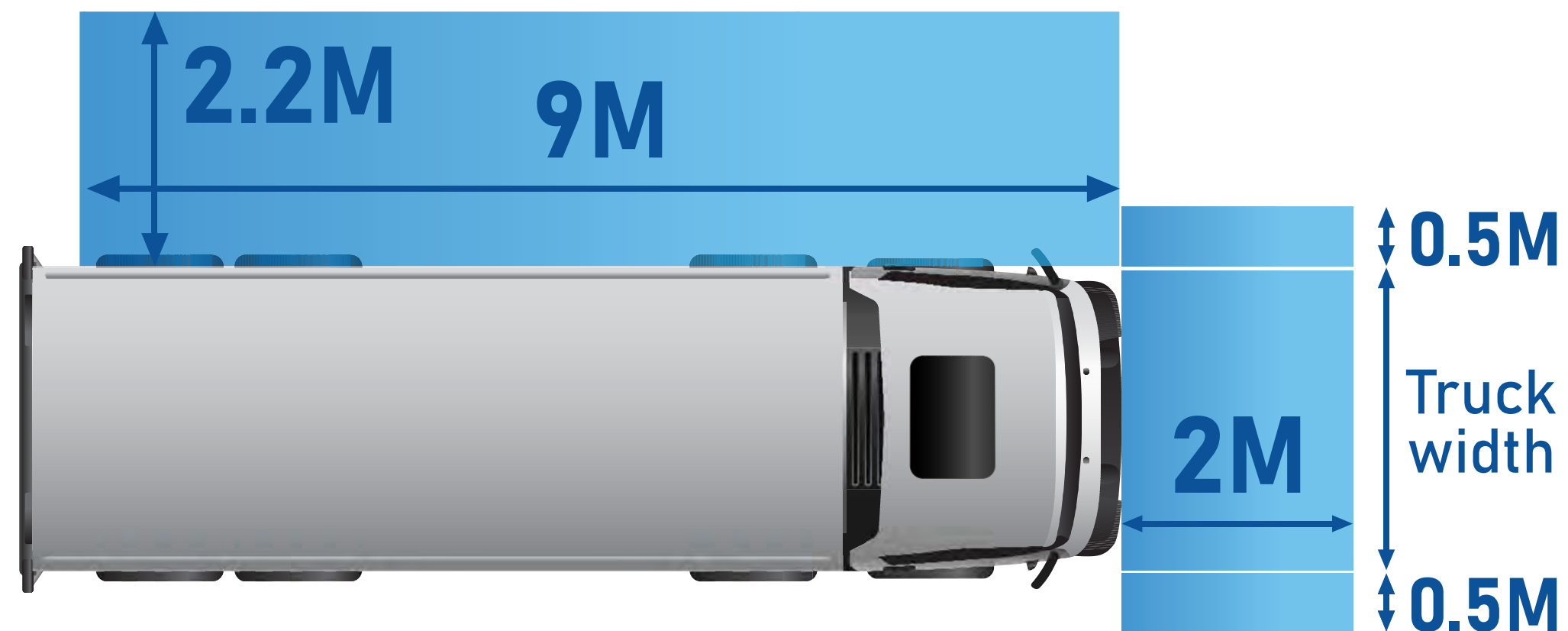


## ARE YOU READY?

GET PREPARED WITH MOTORMAX

The Mayor of London's Vision Zero plan aims to eliminate all road deaths and serious injuries by 2041. The goal is to ensure the street environment incorporates safe speeds, behaviours, street design and vehicles to eliminate deaths on the roads.

To achieve Vision Zero, a Direct Vision Standard (DVS) and a safety permit for all HGVs over 12 tonnes will need to be obtained before entering and operating in Greater London. Failure to comply with legislation will result in a Penalty Charge Notice of £550.



## ENSURE YOUR FLEET IS COMPLIANT

The DVS star rating of all HGVs covered by the Safety Permit Scheme is based on the DVS rating scale of zero to five stars. The threshold star rating for vehicles to receive a permit without a Progressive Safe System condition will be three stars from 28 October 2024, higher than the current one star for fitting the Safe System. We offer a range of solutions to ensure your fleet is compliant, offering a full DVS 2024 kit and an upgrade kit.

### THE DVS STAR RATING SCALE





## WHAT IS THE PROGRESSIVE SAFE SYSTEM?

The system includes;

- **Moving Off Information System (MOIS)**  
All vehicles must have a front sensor system that detects pedestrians or cyclists entering the blind spot area in front of the vehicle.
- **Camera monitor system**  
Camera systems fitted on vehicles must eliminate any remaining blind spots.
- **Audio warnings**  
Audio warnings must be fitted to all vehicles, including those with left-hand drive to ensure all vehicles have the ability to warn VRU of an intended manoeuvre.
- **Warning signage**  
Warning signage requirements remain unchanged.

- **Blind Spot Information System (BSIS)**  
All vehicles must have a blind spot information system. The systems should only provide the information signal to the driver in response to the presence of a vulnerable road user (VRU) and not a car or a piece of roadside furniture (unless a collision with those items was imminent).

The detection range must be 2m in height, 2.2m to the side, and 9m to the back. The system must be active at all vehicle speeds between 0 km/h and 30 km/h.



BSIS



MOIS



MONITOR



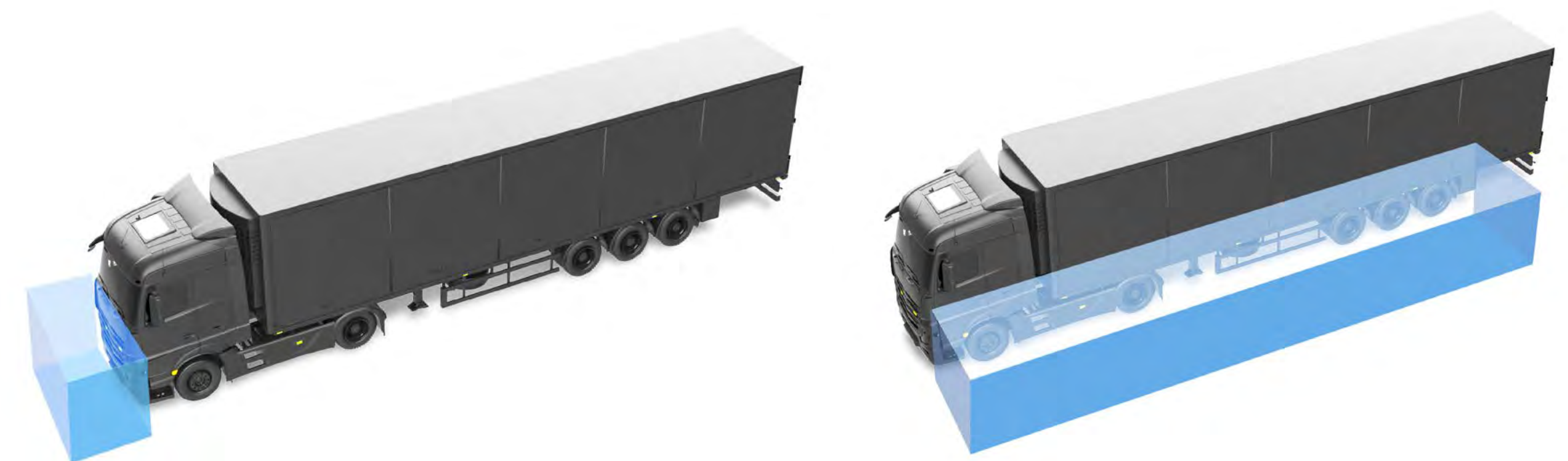
AUDIBLE & VISUAL DISPLAY



LEFT TURN ALARM



WARNING SIGNAGE





## DVS 2024 FULL KIT - BLACK

MM-DVS-24-B



Kit Contents		
Front MOIS Camera	7" AHD Monitor	Left Turn Alarm
Side BSIS Camera	BSIS Extension Arm	CAN Module
Audible & Visual Display	High Accuracy GPS Module	DVS Sticker

**Please Note:** This kit is for vehicles required to install DVS Phase 2 with no existing components.

[Find Out More](#)

## DVS 2024 FULL KIT - WHITE

MM-DVS-24-W



Kit Contents		
Front MOIS Camera	7" AHD Monitor	Left Turn Alarm
Side BSIS Camera	BSIS Extension Arm	CAN Module
Audible & Visual Display	High Accuracy GPS Module	DVS Sticker

**Please Note:** This kit is for vehicles required to install DVS Phase 2 with no existing components.

[Find Out More](#)



## DVS 2024 UPGRADE KIT - BLACK

MM-DVS-24-U-B



### Kit Contents

Front MOIS Camera	Side BSIS Camera
Audible & Visual Display	7" AHD Monitor
BSIS Extension Arm	High Accuracy GPS Module

**Please Note:** This kit is for vehicles required to upgrade from DVS Phase 1 to DVS Phase 2.

[Find Out More](#)

## DVS 2024 UPGRADE KIT - WHITE

MM-DVS-24-U-W



### Kit Contents

Front MOIS Camera	Side BSIS Camera
Audible & Visual Display	7" AHD Monitor
BSIS Extension Arm	High Accuracy GPS Module

**Please Note:** This kit is for vehicles required to upgrade from DVS Phase 1 to DVS Phase 2.

[Find Out More](#)

## PREVENTS INCIDENTS AND SAVES LIVES

Safetymax is an exclusive range of fleet safety technology designed to assist drivers and prevent incidents.

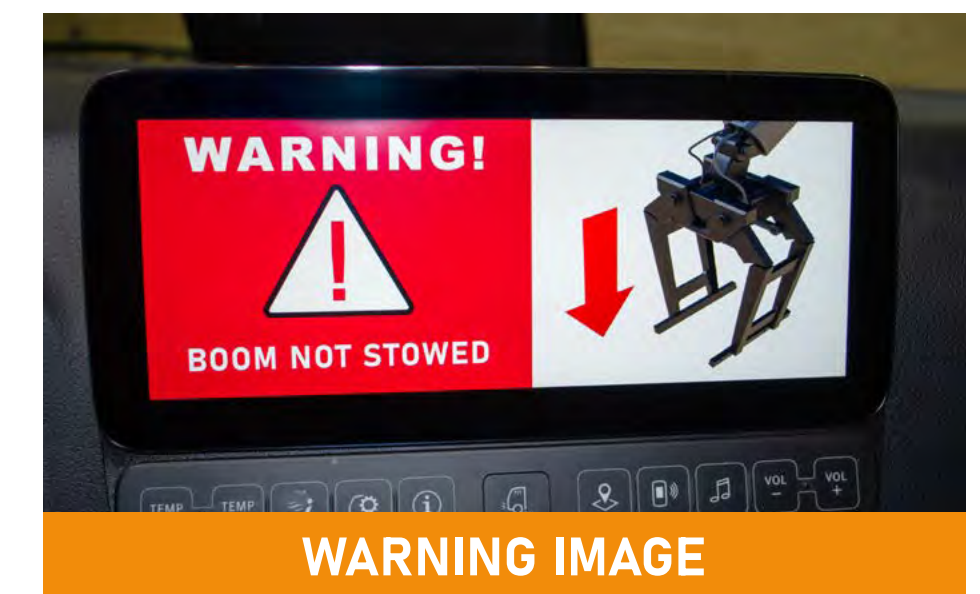
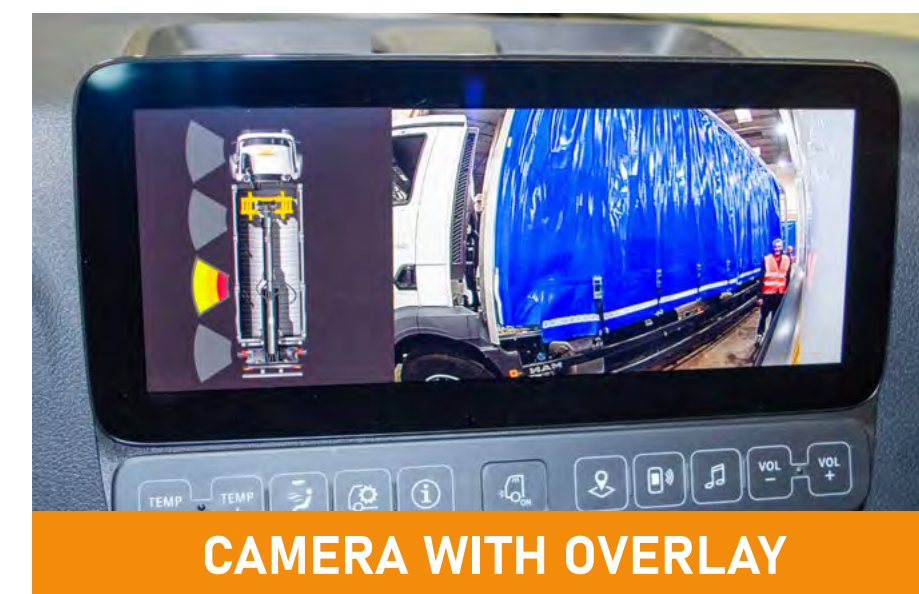
Our pioneering solution combines camera, viewing, warning and parking sensor technology to improve driver visibility whilst manoeuvring vehicles at low speed. Visual alerts via an in-cab monitor and spoken voice warnings alert drivers to potential hazards. The system can be programmed with up to eight alert images and spoken voice warnings i.e., 'side door open,' 'tail lift not stowed'.

### BESPOKE DRIVER ALERTS

Safetymax includes a 360-Degree Detection System using up to 16 ultrasonic sensors to provide drivers with a clear indication of obstacles around the vehicle. Activated below 10mph, the visual display uses a traffic light system at fixed points around the vehicle indicating safe distances whilst manoeuvring.

### BENEFITS OF SAFETYMAX

- Safetymax can be integrated with cameras and vehicle CCTV, live DVR and telematics to provide a single platform solution.
- Use data as a training tool to improve driver behaviour.
- Display warnings on in-cab monitors or integrated factory screens.
- Enables fleet operators to manage and analyse data via a single platform.
- Can be tailored to suit specific sectors, e.g. spoken voice warnings and imagery.







## ONSIGHT SAFETY SYSTEM

Introducing OnSight, our new safety system designed for use with heavy construction vehicles. Four AI cameras provide a 360-degree view, displayed on an in-cab monitor, alerting drivers to hazards like pedestrians with specific warnings. Perimeter lights project a safety zone around the vehicle.



The in-cab monitor switches to full screen mode, displaying the triggered detection zone.



The external speaker warns pedestrians in the danger zone "Caution vehicle in use, do not approach."

Additional pedestrian warnings can be added, i.e. red zone lights or strobes/beacons etc.



### SAFE TO APPROACH

An external LED sign displays a red cross whilst in operation. Once the driver acknowledges those wanting to approach, a green tick can be activated and an external audible alert, i.e. "It is now safe to approach".



### DRIVER WARNINGS

The in-cab display notifies the operator through a visual and audible alert once a pedestrian enters the customisable amber or red danger zones.



## ABOUT FORS



FORS is a voluntary scheme that encourages and incentivises the safe and sustainable operation of commercial vehicles. FORS raises the standard, promotes best practice and provides an industry-recognised credential through an independent audit, staff training and support material. It is widely regarded as the gold-standard accreditation scheme by operators, their clients and enforcement agencies alike.

We have helped many fleets become FORS members. Our innovative safety solutions can be tailored to make sure your fleet meet the requirements for the desired FORS tier.

## WHAT EQUIPMENT DO I NEED?

- A camera system that monitors the near-side vehicle blind spot.
- An in-cab display screen to provide the driver with a view of the near-side blind spot.
- A close proximity sensor and driver audible alert system to alert the driver of other road users in the near-side blind spot.
- Rigid goods vehicles over 7.5 tonnes weight shall be fitted with a camera system that monitors the rear blind spot of the vehicle.



1

**7" MONITOR**  
MM7091AHD



2

**SIDE CAMERA**  
MM720SVAHD



3

**LEFT TURN ALARM**  
MMLTA



4

**REVERSE CAMERA**  
MMCCV720AHD



5

**MULTI-ZONE  
DETECTION KIT**  
MMTDS



6

**REVERSE ALARM**  
MMRA01



7

**DIGITAL VIDEO  
RECORDER**  
MMD4CH1TB

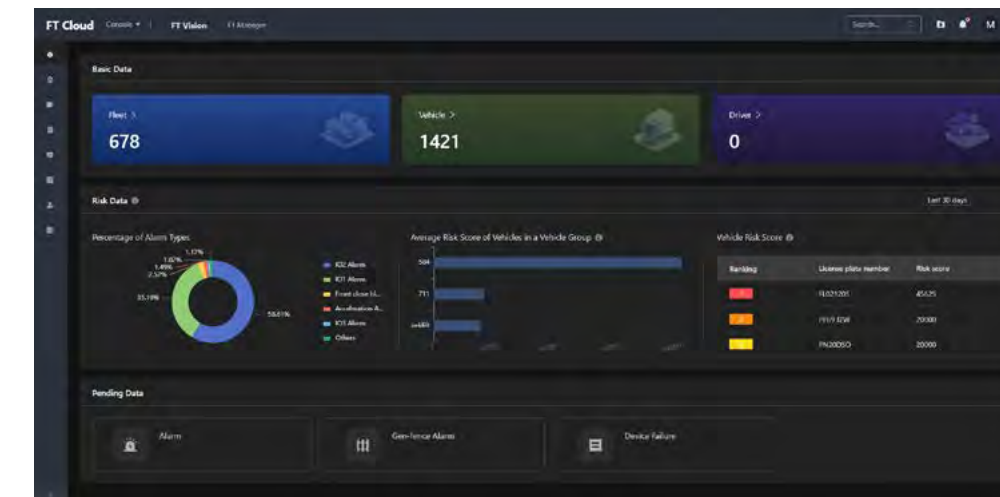




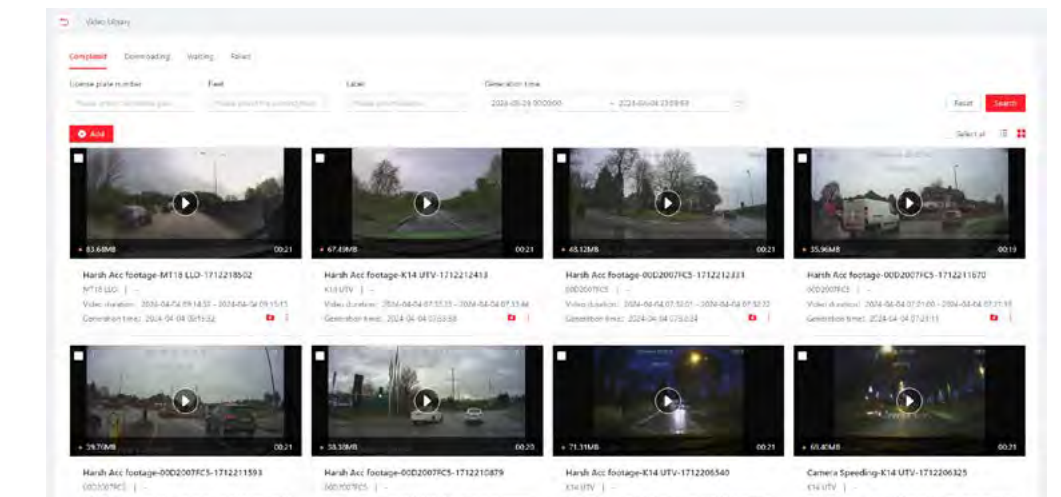
## LIVE VIEW

Everything you need to keep your fleet running smoothly and safely, in one web-based easy-to-use platform. From on-demand vehicle footage, live vehicle GPS, personalised notifications and reporting. Our industry leading platform has already helped hundreds of businesses enhance the productivity and efficiency of their fleet.

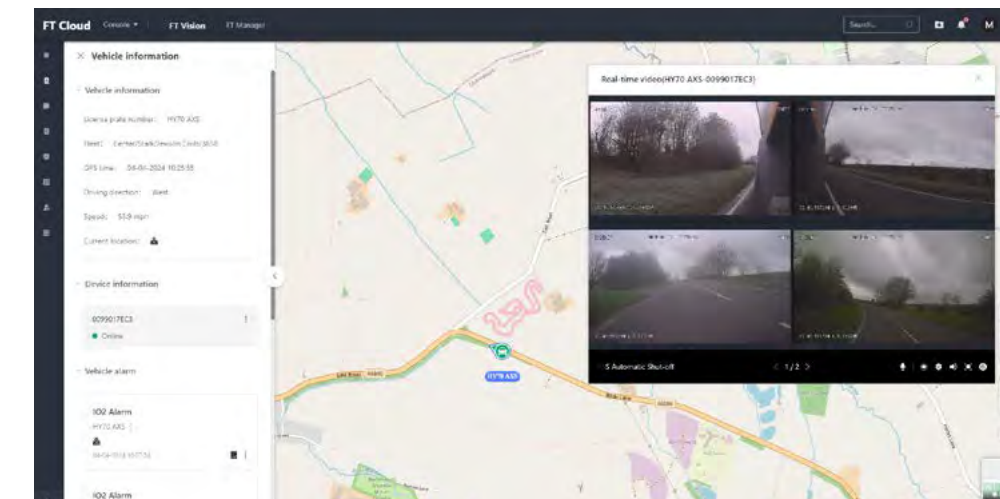
Features	
Live Tracking GPS	Maintenance Portal
Video Livestream	Geofence
Timelapse	AI Automatic Event Upload
Event Sharing	Dashboard
Bread Crumb Trail GPS	G-Sensor Automatic Event Upload
Historical Video Playback	Cellular Data Management
Video Library	Report Centre
Event Tagging & Comment	Push Notifications



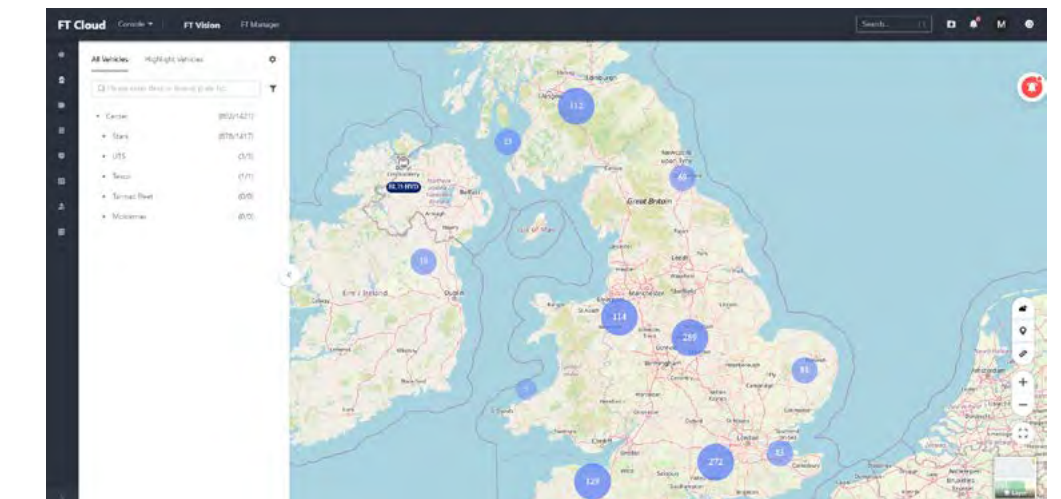
DASHBOARD



EVENT CENTRE



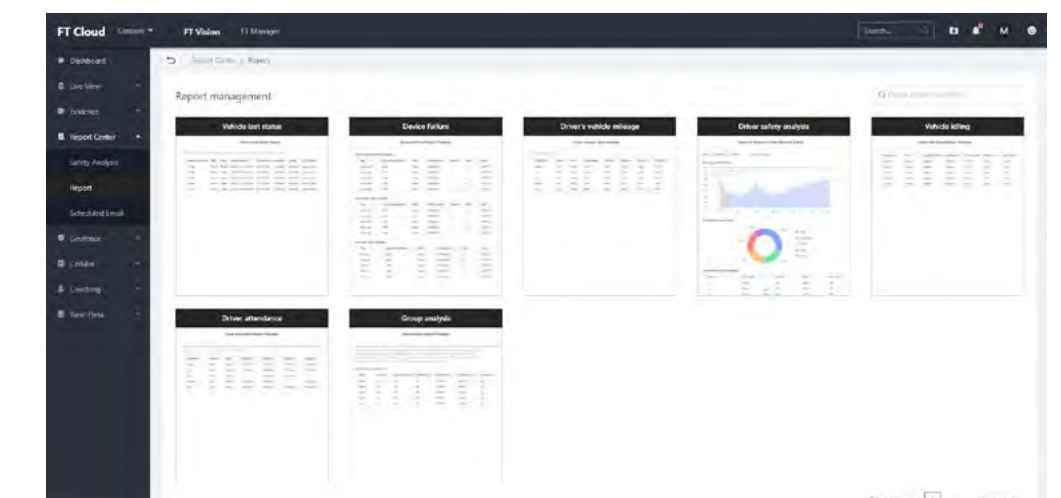
MONITOR



MAP VIEW



VIDEO PLAYBACK



REPORT TEMPLATES

# DVR PRODUCTS

NEXT DAY DELIVERY  
ON ORDERS BEFORE 3:30PM





## FRONT RECORDING CAMERA

MMDC2

### Features & Specification

Ultra-wide 143° DFOV road facing lens, supporting up to 1080P UHD video recording

Additional AHD channel available via expansion cable

2 x 256GB dual-micro SD card storage

Built-in Wi-Fi, 4G communication module, and positioning module

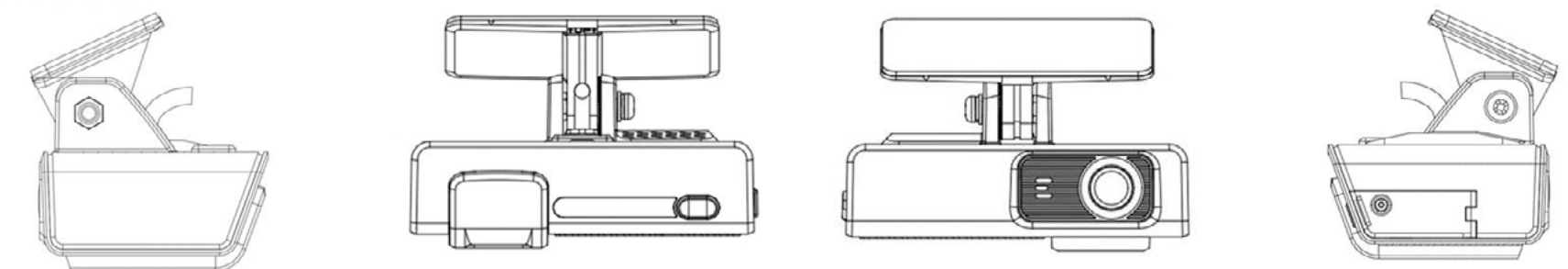
AES256 encryption for video/audio data, encryption protocol TLS1.3 for data transmission

4-channel IO input, 1-channel CAN and 1-channel RS232

Rapid Fit OBD power loom available

Support echo & noise cancelling algorithm to improve the quality of two-way audio communication

Built-in 6-axis gravity sensor, supporting rapid acceleration, rapid deceleration, harsh cornering, and accident detection



[Find Out More](#)



## FRONT & DRIVER AI RECORDING CAMERA

MMDC4

### Features & Specification

Front Camera: 140° viewing angle & 1920P UHD Resolution

Driver Camera: 170° viewing angle & 1080P HD Resolution

Support up to 4-channel video recording (Via expansion cable)

2 x 256GB(Max) dual-micro SD card storage

Built-in Wi-Fi & 4G Module

4-channel IO input

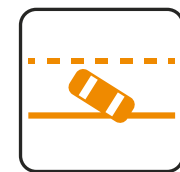
Rapid Fit OBD power supply (Additional cable required)

Built-in 6-axis gravity sensor, supporting rapid acceleration, rapid deceleration, harsh cornering, and accident detection.

### ADAS FUNCTIONS



FCW



LDW



HMW

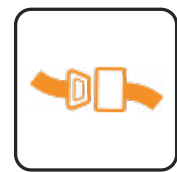
### DSM FUNCTIONS



YAWN  
DETECTION



FATIGUE



UNFASTEN  
SEATBELT



NO  
DRIVER



HAND HELD  
DEVICES



SMOKING  
DETECTION

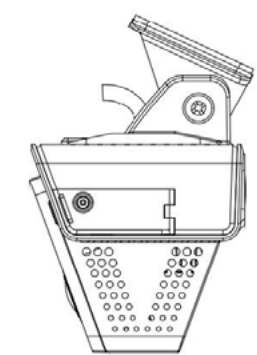
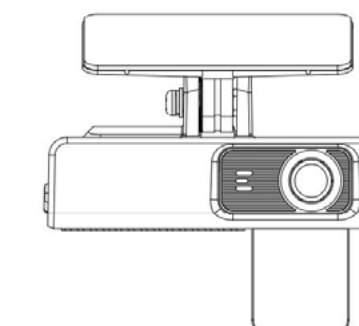
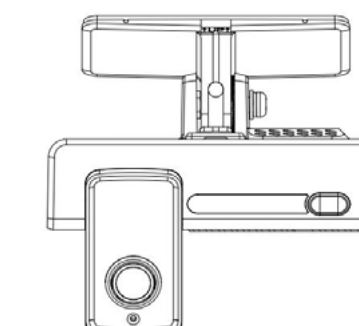
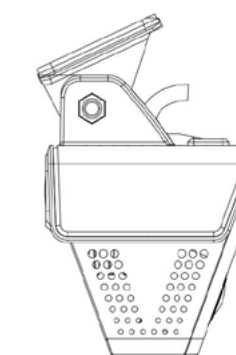


DISTRACTION



LENS  
COVERED

[Find Out More](#)





## 5 CHANNEL DVR MMD4CH

### Features & Specification

4 Channel AHD 1080P + 1 Channel IPC 1080P

Supplied with choice of storage - 1TB or 2TB

Built-in GPS for vehicle tracking

1 Video output

Trigger cable available - 8 Inputs/2 Outputs

Built in AI functions

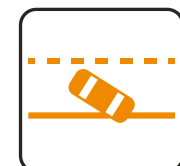
Built-in 4G module for connection to live view system (MMD4CHLV only)



### ADAS FUNCTIONS



FCW

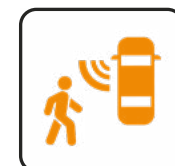


LDW



HMW

### BSD FEATURES - OPTIONAL ACTIVE SAFETY FEATURES



LEFT BLIND  
SPOT DETECTION



RIGHT BLIND  
SPOT DETECTION



FRONT BLIND  
SPOT DETECTION

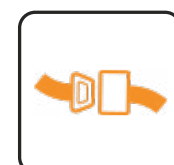
### DSM FUNCTIONS



YAWN  
DETECTION



FATIGUE



UNFASTEN  
SEATBELT



NO  
DRIVER



HAND HELD  
DEVICES



SMOKING  
DETECTION



DISTRACTION



LENS  
COVERED

[Find Out More](#)

Please note: Additional cameras required





## 8 CHANNEL DVR MMD6CH

### Features & Specification

4 Channel AHD 1080P + 4 Channel IPC 1080P

Supplied with choice of storage - 1TB or 2TB

Built-in GPS for vehicle tracking

Trigger cable available - 8 Inputs/2 Outputs

Built in AI functions

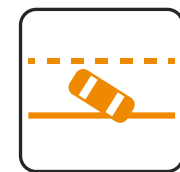
Built-in 4G module for connection to live view system (MMD6CHLV only)



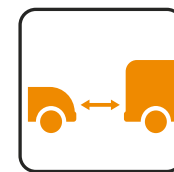
### ADAS FUNCTIONS



FCW



LDW



HMW

### BSD FEATURES - OPTIONAL ACTIVE SAFETY FEATURES



LEFT BLIND  
SPOT DETECTION



RIGHT BLIND  
SPOT DETECTION



FRONT BLIND  
SPOT DETECTION

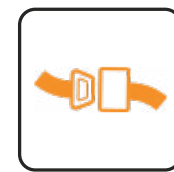
### DSM FUNCTIONS



YAWN  
DETECTION



FATIGUE



UNFASTEN  
SEATBELT



NO  
DRIVER



HAND HELD  
DEVICES



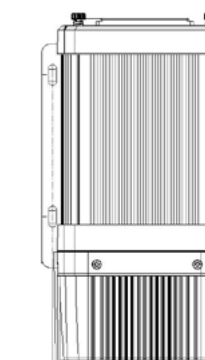
SMOKING  
DETECTION



DISTRACTION



LENS  
COVERED



[Find Out More](#)

Please note: Additional cameras required





## DVR EASY CHECK READER

MMEASYCHECK



Allows you to change DVR settings or view data from a mobile device or tablet.

[Find Out More](#)

## 5 CHANNEL DVR CADDY READER

MMD4CH-HDR



Allows you to connect a 5 & 8 channel DVR HDD caddy to a PC.

[Find Out More](#)

## 5 CHANNEL ALARM CABLE

MMD4CH-ATC



This cable connects to the DVR allowing you to capture alarms & events from the vehicle.

[Find Out More](#)



## DVR VIDEO OUT CABLE

MM4PINDIN5



40cm 4 pin to 4 Pin Cable.

[Find Out More](#)

## 8 CHANNEL DVR - VIDEO OUT CABLE

MM6CH-VDL



For connecting MMD6CH to an external monitor.

[Find Out More](#)

## 5 CHANNEL DVR - HDD CADDY

(NO HDD) MMD4CH-CD / (1TB) MMD4CH-CD1 /  
(2TB) MMD4CH-CD2



DVR Caddy for 5 channel DVR.  
**Sizes available:** 1TB, 2TB & No HDD

[Find Out More](#)



## 8 CHANNEL DVR - HDD CADDY

(NO HDD) MMD6CH-CD / (1TB) MMD6CH-CD1 /  
(2TB) MMD6CH-CD2



DVR Caddy for 8 channel DVR.  
**Sizes available:** 1TB, 2TB & No HDD

## HIGH ENDURANCE MICRO SD CARD

(128GB) MMDC-128GBSD / (256GB) MMDC-256GBSD



High endurance micro SD cards for MMDC camera range.

[Find Out More](#)

## RAPID FIT DASH CAM OBD POWER PLUG

MMDC-OBDD



Connects MMDC camera range to power by connecting to the vehicle's OBD Port.

[Find Out More](#)



## CAMERA EXPANSION CABLE

MMDC2-EXP



Allows for connection of additional 4 pin AHD camera on MMDC2.

[Find Out More](#)

## CAMERA EXPANSION CABLE

MMDC4-EXP



Allows for connection of additional 4 pin AHD & 6 Pin IPC camera on MMDC4.

[Find Out More](#)

# MONITORS

NEXT DAY DELIVERY  
ON ORDERS BEFORE 3:30PM





## 4.3" DASH MOUNTED MONITOR MM43MON



Screen Size	4.3"
Resolution	320 x 234
Format	PAL or NTSC
Inputs	1
Aspect Ratio	4:3
Triggers	1
Wiring	RCA
Mounting Method	Dash Mount
Audio	No

[Find Out More](#)

## 4.3" MIRROR MONITOR (CLIP ON) MMUNMM / (STALK MOUNT) MM01MM



Screen Size	4.3"
Resolution	480 x 272
Format	PAL or NTSC
Inputs	2
Aspect Ratio	4:3 or 16:9
Triggers	1
Wiring	RCA
Mounting Method	Clip on / Mirror Stalk (Not Included)
Audio	No

[Find Out More](#)

## 5.6" DASH MOUNTED MONITOR MM5621DM



Anti-tamper Lock Feature	
Screen Size	5.6"
Resolution	480 x 234
Format	PAL or NTSC
Inputs	3
Aspect Ratio	16:9
Triggers	3
Wiring	4 Pin Din
Mounting Method	Dash Mount
Audio	Yes

[Find Out More](#)



## 6.2" QUAD INPUT MIRROR MONITOR MM620QM



Screen Size	6.2"
Resolution	480 x 234
Format	PAL or NTSC
Inputs	4
Aspect Ratio	4:3 or 16:9
Triggers	4
Wiring	4 Pin Din
Mounting Method	Mirror Stalk (Not Included)
Audio	No

[Find Out More](#)

## 6.5" AHD MIRROR MONITOR MM650AHD



Screen Size	6.5"
Resolution	1024 x 600
Format	PAL or NTSC
Inputs	2
Aspect Ratio	4:3 or 16:9
Triggers	2
Wiring	4 Pin Din
Mounting Method	Mirror Stalk (Not Included)
Audio	No

[Find Out More](#)

## 6.5" MIRROR MONITOR MM650MON



Screen Size	6.5"
Resolution	480 x 234
Format	PAL or NTSC
Inputs	2
Aspect Ratio	4:3 or 16:9
Triggers	1
Wiring	4 Pin Din
Mounting Method	Mirror Stalk (Not Included)
Audio	No

[Find Out More](#)



## 7" AHD DASH MONITOR

MM7041DM



### Anti-tamper Lock Feature

Screen Size	7"
Resolution	800 x 480
Format	PAL or NTSC
Inputs	3
Aspect Ratio	4:3 or 16:9
Triggers	3
Wiring	4 Pin Din
Mounting Method	Dash Mount
Audio	Yes

[Find Out More](#)

## 7" AHD DASH MONITOR

MM7091AHD



Screen Size	7"
Resolution	800 x 480
Format	PAL or NTSC
Inputs	3
Aspect Ratio	16:9
Triggers	3
Wiring	4 Pin Din
Mounting Method	Dash Mount
Audio	No

[Find Out More](#)

## 7" DASH MONITOR

MM7091DM



Screen Size	7"
Resolution	800 x 480
Format	PAL or NTSC
Inputs	3
Aspect Ratio	16:9
Triggers	3
Wiring	4 Pin Din
Mounting Method	Dash Mount
Audio	No

[Find Out More](#)





## 7" WATERPROOF MONITOR

MM700WPM



Screen Size	7"
Resolution	800 x 480
Format	PAL or NTSC
Inputs	2
Aspect Ratio	16:9
Triggers	2
Wiring	4 Pin Din
Mounting Method	Dash Mount
Audio	No

[Find Out More](#)

## FAN BRACKET 1

MMFB01



Size: 100mm x 97mm

[Find Out More](#)

## FAN BRACKET 2

MMFB02



Size: 118mm x 90mm

[Find Out More](#)



## MIRROR MONITOR MOUNTING STALK MMB65



**Compatible with:** Volkswagen, Renault, LDV

[Find Out More](#)

## MIRROR MONITOR MOUNTING STALK MMB45



**Compatible with:** Fiat, IVECO, Peugeot, Ford, Mercedes, Vauxhall

[Find Out More](#)

## MIRROR MONITOR MOUNTING STALK MMB12



**Compatible with:** Vauxhall

[Find Out More](#)



## MIRROR MONITOR MOUNTING STALK MMB03



Compatible with: Volkswagen

[Find Out More](#)

## MIRROR MONITOR MOUNTING STALK MMB09



Compatible with: Ford & Universal  
(Requires mounting glue)

[Find Out More](#)

## MIRROR MONITOR MOUNTING STALK MMB71



Compatible with: Mercedes

[Find Out More](#)



## MIRROR MONITOR MOUNTING STALK MMB95



Compatible with: Fiat, IVECO

[Find Out More](#)

## MIRROR MONITOR MOUNTING STALK MMB48



Compatible with: Ford Ranger

[Find Out More](#)

## MIRROR MONITOR MOUNTING STALK MMB158



Compatible with: Ford

[Find Out More](#)



## CLIP

MM650CLIP



For fitment of a 6.5" mirror monitor to an existing rear view mirror.

[Find Out More](#)

## MIRROR MOUNTING GLUE

MM3118



Glue used for mounting the boss to the windscreen of a vehicle that doesn't already have a rear view mirror.

[Find Out More](#)

# AHD & IP CAMERAS

NEXT DAY DELIVERY  
ON ORDERS BEFORE 3:30PM





## AHD FORWARD FACING CAMERA

MM4P-1080



Format	PAL	Mirror Image	No
Gridlines	No	Night Vison	Not Required
Resolution	1080P	Fitment Location	Windscreen Mount
Waterproof Rating	Not Required	Audio	No
Viewing Angle	81°	Dimensions (mm)	80 (W) x 54.5 (D) x 38.3 (H)

[Find Out More](#)

## AHD FORWARD FACING CAMERA

MM4P-1080A



Format	PAL	Mirror Image	No
Gridlines	No	Night Vison	Not Required
Resolution	1080P	Fitment Location	Windscreen Mount
Waterproof Rating	Not Required	Audio	Yes
Viewing Angle	81°	Dimensions (mm)	121 (W) x 75 (D) x 39 (H)

[Find Out More](#)

## AHD BALL CAMERA

MM720BC



Format	PAL	Mirror Image	Optional
Gridlines	No	Night Vison	Yes
Resolution	720P	Fitment Location	Bracket Mount
Waterproof Rating	IP69K	Audio	No
Viewing Angle	106°	Dimensions (mm)	44.6 (L) x 79 (W) x 62.8 (H)

[Find Out More](#)



## AHD BULLET CAMERA MM9306AHD



Format	PAL	Mirror Image	Loop Wire
Gridlines	No	Night Vison	Yes
Resolution	720P	Fitment Location	Bullet Mount
Waterproof Rating	IP69K	Audio	Yes
Viewing Angle	110°	Dimensions (mm)	78 (W) x 53 (D) x 67 (H)

[Find Out More](#)

## AHD BRACKET MOUNT REAR CAMERA MMCCV720AHD



Format	PAL	Mirror Image	Yes
Gridlines	No	Night Vison	Yes
Resolution	720P	Fitment Location	Heavy Duty Bracket
Waterproof Rating	IP69K	Audio	Yes
Viewing Angle	110°	Dimensions (mm)	78 (W) x 53 (D) x 67 (H)

[Find Out More](#)

## AHD REAR CAMERA MM602AHD



Format	PAL	Mirror Image	Supported
Gridlines	No	Night Vison	Yes
Resolution	720P	Fitment Location	Rear Screw Mount
Waterproof Rating	IP69K	Audio	Yes
Viewing Angle	150°	Dimensions (mm)	200 (W) x 28 (D) x 26 (H)

[Find Out More](#)





## AHD SIDE VIEW CAMERA MM720SVAHD



Format	PAL	Mirror Image	Yes
Gridlines	No	Night Vison	Yes
Resolution	720P	Fitment Location	Side Mount
Waterproof Rating	IP69K	Audio	Yes
Viewing Angle	150°	Dimensions (mm)	68 (W) x 56 (H)

[Find Out More](#)

## AHD MINI DOME CAMERA MM-C11-AHD



Format	PAL	Mirror Image	No
Gridlines	No	Night Vison	Yes
Resolution	720P	Fitment Location	Internal Dome
Waterproof Rating	Not Required	Audio	Yes
Viewing Angle	105°	Dimensions (mm)	69 (W) x 55.5 (H)

[Find Out More](#)

## IPC HEAVY DUTY REAR CAMERA MMIP-980



Format	PAL	Mirror Image	No
Gridlines	No	Night Vison	Yes
Resolution	1080P	Fitment Location	Heavy Duty Bracket
Waterproof Rating	IP69K	Audio	Yes
Waterproof Rating	98°	Dimensions (mm)	75 (L) x 47 (W) x 73 (H)

[Find Out More](#)



## IPC MINI DOME CAMERA

MMIPDOME-C11



Format	PAL	Mirror Image	No
Gridlines	No	Night Vision	Yes
Resolution	720P	Fitment Location	Internal Dome
Waterproof Rating	Not Required	Audio	Yes
Viewing Angle	88°	Dimensions (mm)	69 (W) x 55.5 (H)

[Find Out More](#)

## IPC FORWARD FACING CAMERA

MMIP-FC



Format	PAL	Mirror Image	No
Gridlines	No	Night Vision	Not Required
Resolution	1080P	Fitment Location	Windscreen Mount
Waterproof Rating	Not Required	Audio	Yes
Viewing Angle	84°	Dimensions (mm)	121.6 (W) x 75 (D) x 38.9 (H)

[Find Out More](#)

## IPC REAR CAMERA

MMIP-602



Format	PAL	Mirror Image	No
Gridlines	No	Night Vision	Yes
Resolution	1080P	Fitment Location	Rear Screw Mount
Waterproof Rating	IP69K	Waterproof Rating	Not Required
Waterproof Rating	80°	Waterproof Rating	196(L) x 30(W) x 29 (H)

[Find Out More](#)



## DRIVER SAFETY MONITOR

MMDSM

Format	PAL	Mirror Image	No
Gridlines	No	Night Vison	Yes
Resolution	1280 x 800	Fitment Location	A-Pillar
Waterproof Rating	IP53	Audio	No
Viewing Angle	85.8°	Dimensions (mm)	98 (L) x 30 (W) x 43 (H)



### DSM FUNCTIONS



YAWN  
DETECTION



FATIGUE



UNFASTEN  
SEATBELT



NO  
DRIVER



HAND HELD  
DEVICES



SMOKING  
DETECTION



DISTRACTION



LENS  
COVERED





## AUDI BOOT HANDLE CAMERA

MM0709



Image Lens	SONY CCD
Format	NTSC
Gridlines	Optional
TV Lines	600
Waterproof Rating	IP68
Viewing Angle	115°
Fitment Location	Boot Handle
Dimensions	90mm x 34mm

[Find Out More](#)

## AUDI BOOT HANDLE CAMERA

MM0701



Image Lens	SONY CCD
Format	NTSC
Gridlines	Optional
TV Lines	600
Waterproof Rating	IP68
Viewing Angle	105°
Fitment Location	Boot Handle
Dimensions	110mm x 48mm

[Find Out More](#)

## AUDI BOOT HANDLE CAMERA

MM0706



Image Lens	SONY CCD
Format	NTSC
Gridlines	Optional
TV Lines	600
Waterproof Rating	IP68
Viewing Angle	105°
Fitment Location	Boot Handle
Dimensions	110mm x 30mm

[Find Out More](#)



## AUDI / VOLKSWAGEN BOOT HANDLE CAMERA

MM0515



Image Lens	SONY CCD
Format	NTSC
Gridlines	Optional
TV Lines	600
Waterproof Rating	IP68
Viewing Angle	115°
Fitment Location	Boot Handle
Dimensions	110mm x 48mm

[Find Out More](#)

## AUDI BOOT HANDLE CAMERA

MM0802



Image Lens	SONY CCD
Format	NTSC
Gridlines	Optional
TV Lines	600
Waterproof Rating	IP68
Viewing Angle	115°
Fitment Location	Boot Handle
Dimensions	112mm x 45mm

[Find Out More](#)

## AUDI NUMBER PLATE LIGHT CAMERA

MM0852



Image Lens	SONY CCD
Format	NTSC
Gridlines	Optional
TV Lines	600
Waterproof Rating	IP68
Viewing Angle	105°
Fitment Location	Number Plate Light
Dimensions	70mm x 30mm

[Find Out More](#)



## BMW BOOT HANDLE CAMERA

MM0702



Image Lens	SONY CCD
Format	NTSC
Gridlines	Optional
TV Lines	600
Waterproof Rating	IP68
Viewing Angle	105°
Fitment Location	Boot Handle
Dimensions	108mm x 37mm

[Find Out More](#)

## BMW NUMBER PLATE LIGHT CAMERA

MM0884



Image Lens	SONY CCD
Format	NTSC
Gridlines	Optional
TV Lines	600
Waterproof Rating	IP68
Viewing Angle	105°
Fitment Location	Number Plate Light
Dimensions	104mm x 32mm

[Find Out More](#)

## BMW BOOT HANDLE CAMERA

MM0707



Image Lens	SONY CCD
Format	NTSC
Gridlines	Optional
TV Lines	600
Waterproof Rating	IP68
Viewing Angle	105°
Fitment Location	Boot Handle
Dimensions	162mm x 48mm

[Find Out More](#)



## BMW BOOT HANDLE CAMERA

MM0828



Image Lens	SONY CCD
Format	NTSC
Gridlines	Optional
TV Lines	600
Waterproof Rating	IP68
Viewing Angle	105°
Fitment Location	Boot Handle
Dimensions	160mm x 45mm

[Find Out More](#)

## BMW NUMBER PLATE LIGHT CAMERA

MM0543



Image Lens	SONY CCD
Format	NTSC
Gridlines	Optional
TV Lines	600
Waterproof Rating	IP68
Viewing Angle	105°
Fitment Location	Number Plate Light
Dimensions	72mm x 31mm

[Find Out More](#)

## CITROEN, FIAT, PEUGEOT & TOYOTA NUMBER PLATE LIGHT CAMERA

MM0352



Image Lens	SONY CCD
Format	NTSC
Gridlines	Optional
TV Lines	600
Waterproof Rating	IP68
Viewing Angle	105°
Fitment Location	Number Plate Light
Dimensions	100mm x 47mm

[Find Out More](#)



## FORD BOOT HANDLE CAMERA MM0716



Image Lens	SONY CCD
Format	NTSC
Gridlines	Optional
TV Lines	600
Waterproof Rating	IP68
Viewing Angle	105°
Fitment Location	Boot Handle
Dimensions	200mm x 45mm

[Find Out More](#)

## FORD NUMBER PLATE LIGHT CAMERA MM0927



Image Lens	SONY CCD
Format	NTSC
Gridlines	Optional
TV Lines	600
Waterproof Rating	IP68
Viewing Angle	105°
Fitment Location	Number Plate Light
Dimensions	72mm x 31mm

[Find Out More](#)

## FORD BOOT HANDLE CAMERA MM036



Image Lens	SONY CCD
Format	NTSC
Gridlines	Optional
TV Lines	600
Waterproof Rating	IP68
Viewing Angle	105°
Fitment Location	Boot Handle
Dimensions	185mm x 53mm

[Find Out More](#)



## FORD BOOT HANDLE CAMERA

MM025



Image Lens	SONY CCD
Format	NTSC
Gridlines	Optional
TV Lines	600
Waterproof Rating	IP68
Viewing Angle	105°
Fitment Location	Boot Handle
Dimensions	185mm x 51mm

[Find Out More](#)

## FORD BOOT HANDLE CAMERA

MM0703



Image Lens	SONY CCD
Format	NTSC
Gridlines	Optional
TV Lines	600
Waterproof Rating	IP68
Viewing Angle	105°
Fitment Location	Boot Handle
Dimensions	93mm x 39mm

[Find Out More](#)

## FORD NUMBER PLATE LIGHT CAMERA

MM0708



Image Lens	SONY CCD
Format	NTSC
Gridlines	Optional
TV Lines	600
Waterproof Rating	IP68
Viewing Angle	105°
Fitment Location	Boot Handle
Dimensions	134mm x 40mm

[Find Out More](#)

## FORD NUMBER PLATE LIGHT CAMERA

MM0822



Image Lens	SONY CCD
Format	NTSC
Gridlines	Optional
TV Lines	600
Waterproof Rating	IP68
Viewing Angle	105°
Fitment Location	Number Plate Light
Dimensions	162mm x 48mm

[Find Out More](#)

## FORD NUMBER PLATE LIGHT CAMERA

MM0522



Image Lens	SONY CCD
Format	NTSC
Gridlines	Optional
TV Lines	600
Waterproof Rating	IP68
Viewing Angle	105°
Fitment Location	Number Plate Light
Dimensions	57mm x 25mm

[Find Out More](#)

## LAND ROVER NUMBER PLATE LIGHT CAMERA

MM0592



Image Lens	SONY CCD
Format	NTSC
Gridlines	Optional
TV Lines	600
Waterproof Rating	IP68
Viewing Angle	105°
Fitment Location	Number Plate Light
Dimensions	79mm x 46mm

[Find Out More](#)



## MERCEDES BOOT HANDLE CAMERA MM0710



Image Lens	SONY CCD
Format	NTSC
Gridlines	Optional
TV Lines	600
Waterproof Rating	IP68
Viewing Angle	105°
Fitment Location	Boot Handle
Dimensions	214mm x 51mm

[Find Out More](#)

## MERCEDES BOOT HANDLE CAMERA MM0715



Image Lens	SONY CCD
Format	NTSC
Gridlines	Optional
TV Lines	600
Waterproof Rating	IP68
Viewing Angle	105°
Fitment Location	Boot Handle
Dimensions	214mm x 51mm

[Find Out More](#)

## MERCEDES BOOT HANDLE CAMERA MM0705



Image Lens	SONY CCD
Format	NTSC
Gridlines	Optional
TV Lines	600
Waterproof Rating	IP68
Viewing Angle	105°
Fitment Location	Boot Handle
Dimensions	128mm x 53mm

[Find Out More](#)



## MERCEDES NUMBER PLATE LIGHT CAMERA

MM0831



Image Lens	SONY CCD
Format	NTSC
Gridlines	Optional
TV Lines	600
Waterproof Rating	IP68
Viewing Angle	105°
Fitment Location	Number Plate Light
Dimensions	49mm x 33mm

[Find Out More](#)

## MERCEDES NUMBER PLATE LIGHT CAMERA

MM0914



Image Lens	SONY CCD
Format	NTSC
Gridlines	Optional
TV Lines	600
Waterproof Rating	IP68
Viewing Angle	105°
Fitment Location	Number Plate Light
Dimensions	49mm x 33mm

[Find Out More](#)

## MERCEDES NUMBER PLATE LIGHT CAMERA

MM0832



Image Lens	SONY CCD
Format	NTSC
Gridlines	Optional
TV Lines	600
Waterproof Rating	IP68
Viewing Angle	105°
Fitment Location	Number Plate Light
Dimensions	71mm x 24mm

[Find Out More](#)



## MERCEDES REVERSE CAMERA

MMT008



Image Lens	SONY CCD
Format	NTSC
Gridlines	Optional
TV Lines	600
Waterproof Rating	IP68
Viewing Angle	105°
Fitment Location	Roof Mount
Dimensions	197mm x 118mm

[Find Out More](#)

## MERCEDES NUMBER PLATE LIGHT CAMERA

MM0835



Image Lens	SONY CCD
Format	NTSC
Gridlines	Optional
TV Lines	600
Waterproof Rating	IP68
Viewing Angle	105°
Fitment Location	Number Plate Light
Dimensions	75mm x 30mm

[Find Out More](#)

## PORSCHE NUMBER PLATE LIGHT CAMERA

MM0836



Image Lens	SONY CCD
Format	NTSC
Gridlines	No
TV Lines	600
Waterproof Rating	IP68
Viewing Angle	105°
Fitment Location	Number Plate Light
Dimensions	79mm x 35mm

[Find Out More](#)



## VAUXHALL NUMBER PLATE LIGHT CAMERA

MM0539



Image Lens	SONY CCD
Format	NTSC
Gridlines	Optional
TV Lines	600
Waterproof Rating	IP68
Viewing Angle	105°
Fitment Location	Number Plate Light
Dimensions	104mm x 55mm

[Find Out More](#)

## VAUXHALL NUMBER PLATE LIGHT CAMERA

MM0820



Image Lens	SONY CCD
Format	NTSC
Gridlines	Optional
TV Lines	600
Waterproof Rating	IP68
Viewing Angle	105°
Fitment Location	Number Plate Light
Dimensions	80mm x 30mm

[Find Out More](#)

## VOLKSWAGEN BOOT HANDLE CAMERA

MM0300



Image Lens	SONY CCD
Format	NTSC
Gridlines	Optional
TV Lines	600
Waterproof Rating	IP68
Viewing Angle	105°
Fitment Location	Badge Handle
Dimensions	150mm x 145mm

[Find Out More](#)



## VOLKSWAGEN BOOT HANDLE CAMERA

MM0410



Image Lens	SONY CCD
Format	NTSC
Gridlines	Optional
TV Lines	600
Waterproof Rating	IP68
Viewing Angle	105°
Fitment Location	Badge Handle
Dimensions	105mm x 109mm

[Find Out More](#)

## VOLKSWAGEN BOOT HANDLE CAMERA

MM0G8B



Image Lens	SONY CCD
Format	NTSC
Gridlines	Optional
TV Lines	600
Waterproof Rating	IP68
Viewing Angle	105°
Fitment Location	Badge Handle
Dimensions	110.30mm x 121.35mm

## VOLKSWAGEN NUMBER PLATE LIGHT CAMERA

MM0936



Image Lens	SONY CCD
Format	NTSC
Gridlines	Optional
TV Lines	600
Waterproof Rating	IP68
Viewing Angle	105°
Fitment Location	Number Plate Light
Dimensions	78mm x 26mm

[Find Out More](#)



## VOLKSWAGEN NUMBER PLATE LIGHT CAMERA

MM0503



Image Lens	SONY CCD
Format	NTSC
Gridlines	Optional
TV Lines	600
Waterproof Rating	IP68
Viewing Angle	105°
Fitment Location	Number Plate Light
Dimensions	78mm x 26mm

[Find Out More](#)

## VOLKSWAGEN NUMBER PLATE LIGHT CAMERA

MM0836



Image Lens	SONY CCD
Format	NTSC
Gridlines	Optional
TV Lines	600
Waterproof Rating	IP68
Viewing Angle	105°
Fitment Location	Number Plate Light
Dimensions	77mm x 28mm

[Find Out More](#)

## VOLVO NUMBER PLATE LIGHT CAMERA

MM0947



Image Lens	SONY CCD
Format	NTSC
Gridlines	Optional
TV Lines	600
Waterproof Rating	IP68
Viewing Angle	105°
Fitment Location	Number Plate Light
Dimensions	78mm x 26mm

[Find Out More](#)



## MINI FORWARD FACING CAMERA

MM001F



Image Lens	CMOS
Format	NTSC
Gridlines	No
TV Lines	420
Waterproof Rating	IP66
Viewing Angle	140°
Fitment Location	Forward Facing
Dimensions	28mm x 40mm x 40mm

[Find Out More](#)

## REAR CAMERA

MM602



Resolution	CCD
Format	PAL
Night Vision	Yes
Mirror Image	Supported
Waterproof Rating	IP69k
Viewing Angle	150°
Fitment Location	Rear Screw Mount
Dimensions	200mm x 28mm x 26mm

[Find Out More](#)

## UNIVERSAL 21MM BULLET CAMERA

MM6331



Image Lens	CMOS
Format	NTSC or PAL
Gridlines	Optional
TV Lines	420
Waterproof Rating	IP66
Viewing Angle	85°
Fitment Location	Flush Fit
Dimensions	21mm x 36mm

[Find Out More](#)



## UNIVERSAL 32MM BULLET CAMERA

MM9306



Image Lens	SONY CCD
Format	NTSC or PAL
Gridlines	Optional
TV Lines	420
Waterproof Rating	IP66
Viewing Angle	85°
Fitment Location	Flush Fit
Dimensions	32mm x 44mm

[Find Out More](#)

## UNIVERSAL ADJUSTABLE BRACKET CAMERA

MM116



Image Lens	CMOS
Format	NTSC
Gridlines	Optional
TV Lines	420
Waterproof Rating	IP66
Viewing Angle	85°
Fitment Location	Bracket Mount
Dimensions	21mm x 36mm

[Find Out More](#)

## UNIVERSAL DUAL MOUNTABLE REVERSE CAMERA (BLACK / WHITE)

(BLACK) MM9770B / (WHITE) MM9770W



Image Lens	SONY CCD
Format	NTSC or PAL
Gridlines	No
TV Lines	600
Waterproof Rating	IP68
Viewing Angle	100°
Fitment Location	Bracket Mount
Dimensions	100mm x 75mm

[Find Out More](#)



## UNIVERSAL MICRO DOME REVERSE CAMERA

MM105



Image Lens	CMOS
Format	NTSC
Gridlines	Optional
TV Lines	600
Waterproof Rating	IP68
Viewing Angle	85°
Fitment Location	Hole Saw
Dimensions	20mm x 20mm

[Find Out More](#)

## UNIVERSAL MOUNTABLE REVERSE CAMERA (BLACK / WHITE)

(BLACK) MMCCV087B / (WHITE) MMCCV087W



Image Lens	SONY CCD
Format	PAL
Gridlines	No
TV Lines	700
Waterproof Rating	IP69K
Viewing Angle	120°
Fitment Location	Bracket Mount
Dimensions	60mm x 85mm

[Find Out More](#)

## UNIVERSAL MOUNTABLE REVERSE CAMERA WITH SHADE

MM9880



Image Lens	SONY CCD
Format	NTSC
Gridlines	No
TV Lines	600
Waterproof Rating	IP68
Viewing Angle	105°
Fitment Location	Bracket Mount
Dimensions	70mm x 45mm

[Find Out More](#)

## UNIVERSAL NUMBER PLATE SURROUND REVERSE CAMERA

MM0310



Image Lens	CMOS
Format	NTSC
Gridlines	Optional
TV Lines	420
Waterproof Rating	IP66
Viewing Angle	105°
Fitment Location	Number Plate
Dimensions	540mm x 136mm

[Find Out More](#)

## UNIVERSAL WEDGE REVERSE CAMERA

MM114



Image Lens	CMOS
Format	PAL or NTSC
Gridlines	Yes
TV Lines	420
Waterproof Rating	IP67
Viewing Angle	105°
Fitment Location	Hole Saw
Dimensions	35mm x 30mm x 30mm

[Find Out More](#)

## UNIVERSAL WEDGE REVERSE CAMERA

MM6301



Image Lens	CMOS
Format	NTSC
Gridlines	Optional
TV Lines	480
Waterproof Rating	IP66
Viewing Angle	105°
Fitment Location	Wedge Fit
Dimensions	30mm x 34mm

[Find Out More](#)



## UNIVERSAL WEDGE REVERSE CAMERA

MMT820



Image Lens	SONY CCD
Format	NTSC
Gridlines	Optional
TV Lines	600
Waterproof Rating	IP68
Viewing Angle	115°
Fitment Location	Wedge Fit
Dimensions	28mm x 29mm x 25mm

[Find Out More](#)

## FIAT, PEUGEOT & CITROEN BRAKE LIGHT REVERSE CAMERA

(PAL) MM09C5P / (NTSC) MM09C5



Image Lens	SONY CCD
Format	PAL or NTSC
Gridlines	No
TV Lines	700
Waterproof Rating	IP69K
Viewing Angle	120°
Night vision	Yes
Dimensions	263mm x 46mm

[Find Out More](#)

## FORD TRANSIT & CUSTOM BRAKE LIGHT REVERSE CAMERA

(PAL) MM09C4P / (NTSC) MM09C4N /  
(720P PAL) MM09C4AHD



Image Lens	SONY CCD
Format	PAL or NTSC
Gridlines	No
TV Lines	700
Waterproof Rating	IP68
Viewing Angle	120°
Night vision	Yes
Dimensions	386mm x 54mm

[Find Out More](#)



## FORD TRANSIT CONNECT BRAKE LIGHT REVERSE CAMERA

(PAL) MM09C16P / (NTSC) MM09C16N



Image Lens	SONY CCD
Format	PAL or NTSC
Gridlines	No
TV Lines	700
Waterproof Rating	IP69K
Viewing Angle	170°
Night vision	No
Dimensions	194mm x 127mm

[Find Out More](#)

## FORD TRANSIT CUSTOM BRAKE LIGHT REVERSE CAMERA

(PAL) MM09C9LEDP / (NTSC) MM09C9LEDN



Image Lens	SONY CCD
Format	PAL or NTSC
Gridlines	No
TV Lines	700
Waterproof Rating	IP69K
Viewing Angle	120°
Night vision	Yes
Dimensions	190mm x 54mm

[Find Out More](#)

## AHD FORD TRANSIT DUAL LENS BRAKE LIGHT REVERSE CAMERA

MM09C4DL



Image Lens	SONY CCD
Format	PAL
Gridlines	No
Resolution	720P
Waterproof Rating	IP69K
Viewing Angle	120°
Night vision	Yes
Dimensions	386mm x 54mm

[Find Out More](#)



## IVECO DAILY BRAKE LIGHT REVERSE CAMERA

(PAL) MM09C7P / (NTSC) MM09C7N



Image Lens	SONY CCD
Format	PAL or NTSC
Gridlines	No
TV Lines	700
Waterproof Rating	IP69K
Viewing Angle	170°
Night vision	No
Dimensions	250mm x 32mm

[Find Out More](#)

## MERCEDES SPRINTER & VW CRAFTER BRAKE LIGHT REVERSE CAMERA

(PAL) MM09C3P / (NTSC) MM09C3N



Image Lens	SONY CCD
Format	PAL or NTSC
Gridlines	No
TV Lines	700
Waterproof Rating	IP69K
Viewing Angle	120°
Night vision	Yes
Dimensions	342mm x 33mm

[Find Out More](#)

## PEUGEOT, CITROEN & TOYOTA BRAKE LIGHT REVERSE CAMERA

(PAL) MM09C10P / (NTSC) MM09C10N



Image Lens	SONY CCD
Format	PAL or NTSC
Gridlines	No
TV Lines	700
Waterproof Rating	IP69K
Viewing Angle	170°
Night vision	No
Dimensions	263mm x 32mm

[Find Out More](#)





## PEUGEOT, CITROEN & TOYOTA BRAKE LIGHT REVERSE CAMERA

(PAL) MM09C14P / (NTSC) MM09C14N



Image Lens	SONY CCD
Format	PAL or NTSC
Gridlines	No
TV Lines	700
Waterproof Rating	IP69K
Viewing Angle	170°
Night vision	Yes
Dimensions	270mm x 53mm

[Find Out More](#)

## RENAULT, NISSAN, VAUXHALL BRAKE LIGHT REVERSE CAMERA

(PAL) MM09C8P / (NTSC) MM09C8N



Image Lens	SONY CCD
Format	PAL or NTSC
Gridlines	No
TV Lines	700
Waterproof Rating	IP66
Viewing Angle	120°
Night vision	Yes
Dimensions	194mm x 127mm

[Find Out More](#)

## VAUXHALL & RENAULT BRAKE LIGHT REVERSE CAMERA

(PAL) MMRVC07P / (NTSC) MMRVC07N



Image Lens	SONY CCD
Format	PAL or NTSC
Gridlines	No
TV Lines	700
Waterproof Rating	IP69K
Viewing Angle	170°
Night vision	Yes
Dimensions	232mm x 72mm

[Find Out More](#)



## VAUXHALL & RENAULT BRAKE LIGHT REVERSE CAMERA

(PAL) MM09C13P / (NTSC) MM09C13N



Image Lens	SONY CCD
Format	PAL or NTSC
Gridlines	No
TV Lines	700
Waterproof Rating	IP69K
Viewing Angle	170°
Night vision	Yes
Dimensions	194mm x 127mm

[Find Out More](#)

## VOLKSWAGEN CRAFTER BRAKE LIGHT REVERSE CAMERA

(PAL) MM09C12P / (NTSC) MM09C12N

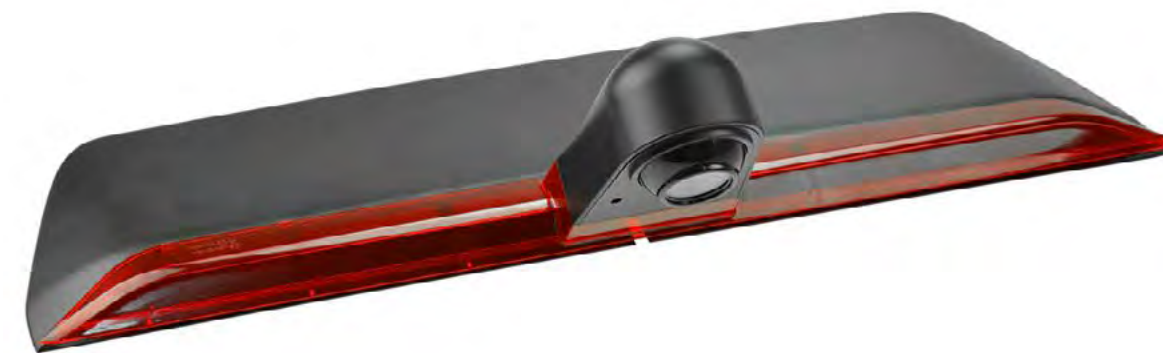


Image Lens	SONY CCD
Format	PAL or NTSC
Gridlines	No
TV Lines	700
Waterproof Rating	IP68
Viewing Angle	120°
Night vision	Yes
Dimensions	530mm x 77mm

[Find Out More](#)

## VOLKSWAGEN T5 & T6 BRAKE LIGHT REVERSE CAMERA

(PAL) MM09C11P / (NTSC) MM09C11N



Image Lens	SONY CCD
Format	PAL or NTSC
Gridlines	No
TV Lines	700
Waterproof Rating	IP69K
Viewing Angle	170°
Night vision	No
Dimensions	187mm x 34mm

[Find Out More](#)



## UNIVERSAL BRAKE LIGHT REVERSE CAMERA

MM09UNILED



Image Lens	SONY CCD
Format	PAL or NTSC
Gridlines	No
TV Lines	700
Waterproof Rating	IP69K
Viewing Angle	120°
Night vision	Yes
Dimensions	212(L) x 62(W) x 116(H) mm

[Find Out More](#)

# CAMERA INTEGRATION

NEXT DAY DELIVERY  
ON ORDERS BEFORE 3:30PM





## AUDI 3G (CAN GATEWAY)

MM-AUDI-3G



Plug & Play	Yes	Moveable Gridlines	Yes
Optical Park Overlay	Yes	Camera Inputs	Front & Rear
Coding	Not Required	Additional Information	

**Please Note:** This kit comes with the plug in loom to connect at the CAN Gateway, please ensure you check the car model.

[Find Out More](#)

## AUDI 3G (HEATER CONTROLS)

MM-AUDI-3G-HC



Plug & Play	Yes	Moveable Gridlines	Yes
Optical Park Overlay	Yes	Camera Inputs	Front & Rear
Coding	Not Required	Additional Information	

**Please Note:** This kit comes with the plug in loom to connect at the Heater Controls, please ensure you check the car model.

[Find Out More](#)



## AUDI CONCERT SYMPHONY

MM-AUDI-CS



Plug & Play	Yes	Moveable Gridlines	2012 Onwards
Optical Park Overlay	2012 Onwards	Camera Inputs	Front & Rear
Coding	Not Required	Additional Information	

[Find Out More](#)

## AUDI MIB3

MM-MIB3-A3



Plug & Play	Yes	Moveable Gridlines	Yes
Optical Park Overlay	Yes	Camera Inputs	Front & Rear
Coding	Not Required	Additional Information	

[Find Out More](#)



## AUDI Q2 MIB2

MM-MIB2-Q2



Plug & Play	Yes	Moveable Gridlines	Yes
Optical Park Overlay	Yes	Camera Inputs	Front & Rear
Coding	Not Required	Additional Information	

[Find Out More](#)

## AUDI, PORSCHE, SEAT, SKODA & VOLKSWAGEN MIB 2

MM-MIB2



Plug & Play	Yes	Moveable Gridlines	Yes
Optical Park Overlay	Yes	Camera Inputs	Front & Rear
Coding	Not Required	Additional Information	

[Find Out More](#)



## BMW IDRIVE CIC

MM-BMW-CIC

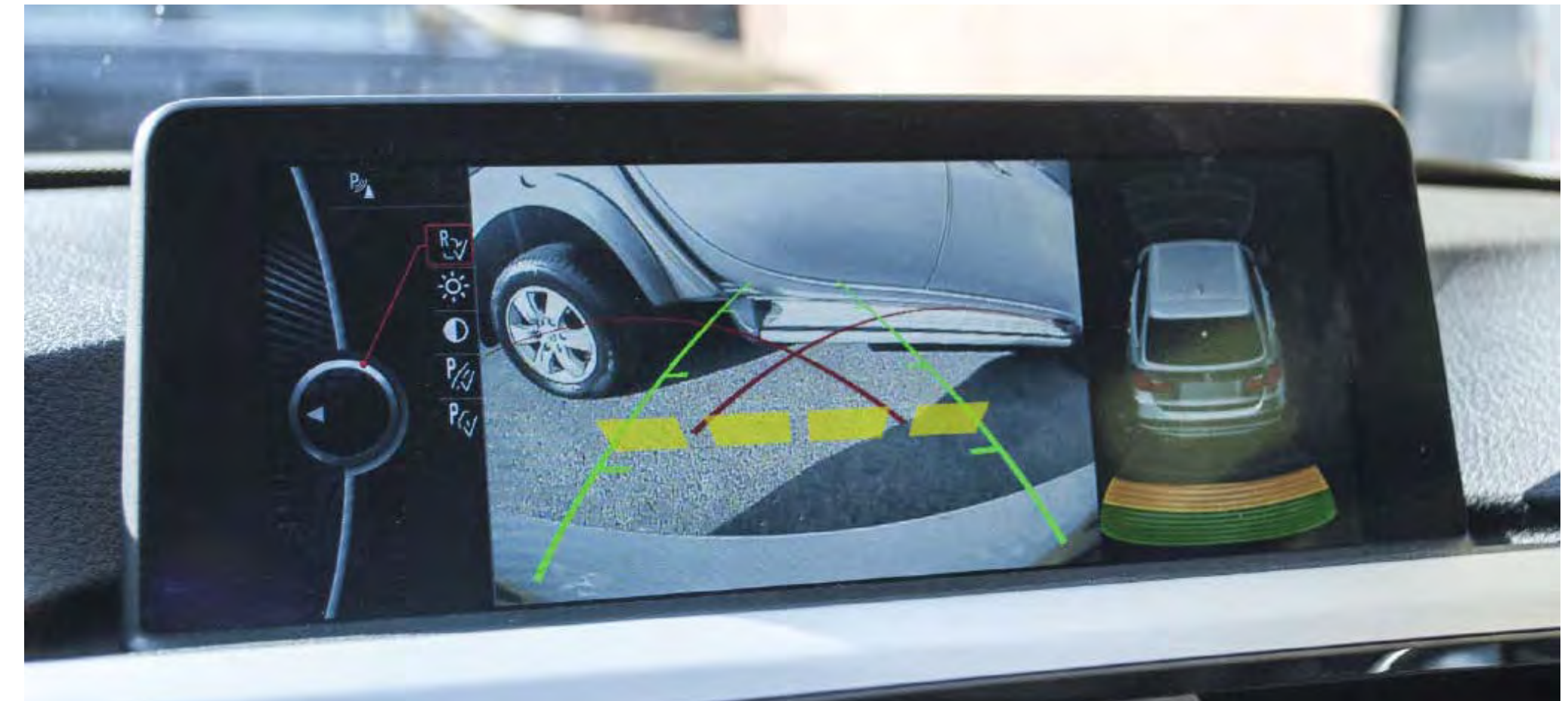


Plug & Play	Yes	Moveable Gridlines	Yes
Optical Park Overlay	Yes	Camera Inputs	Front & Rear
Coding	Not Required	Additional Information	

[Find Out More](#)

## BMW IDRIVE NBT

MM-BMW-NBT



Plug & Play	Yes	Moveable Gridlines	Yes
Optical Park Overlay	Yes	Camera Inputs	Front & Rear
Coding	Not Required	Additional Information	

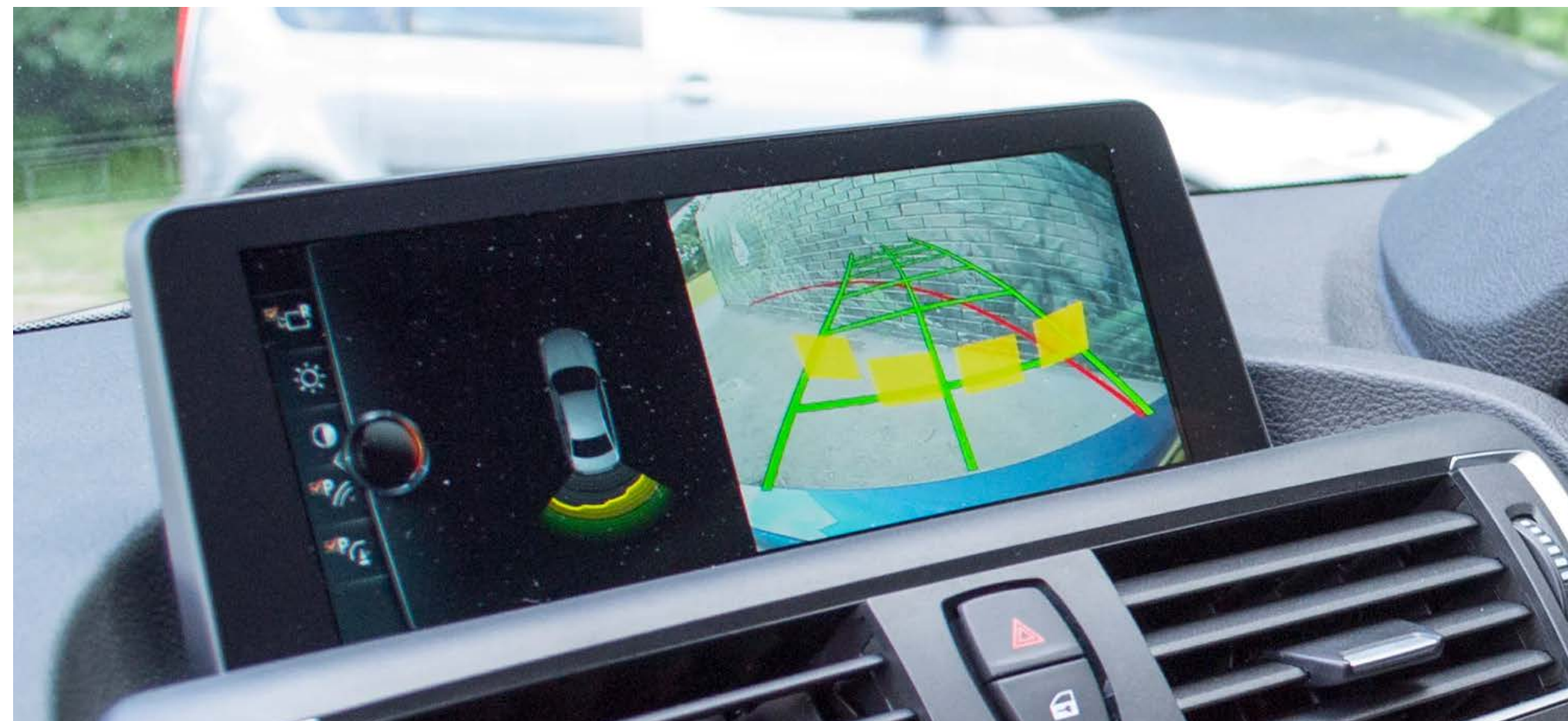
[Find Out More](#)





## BMW APIX1

MM-BMW-APIX1

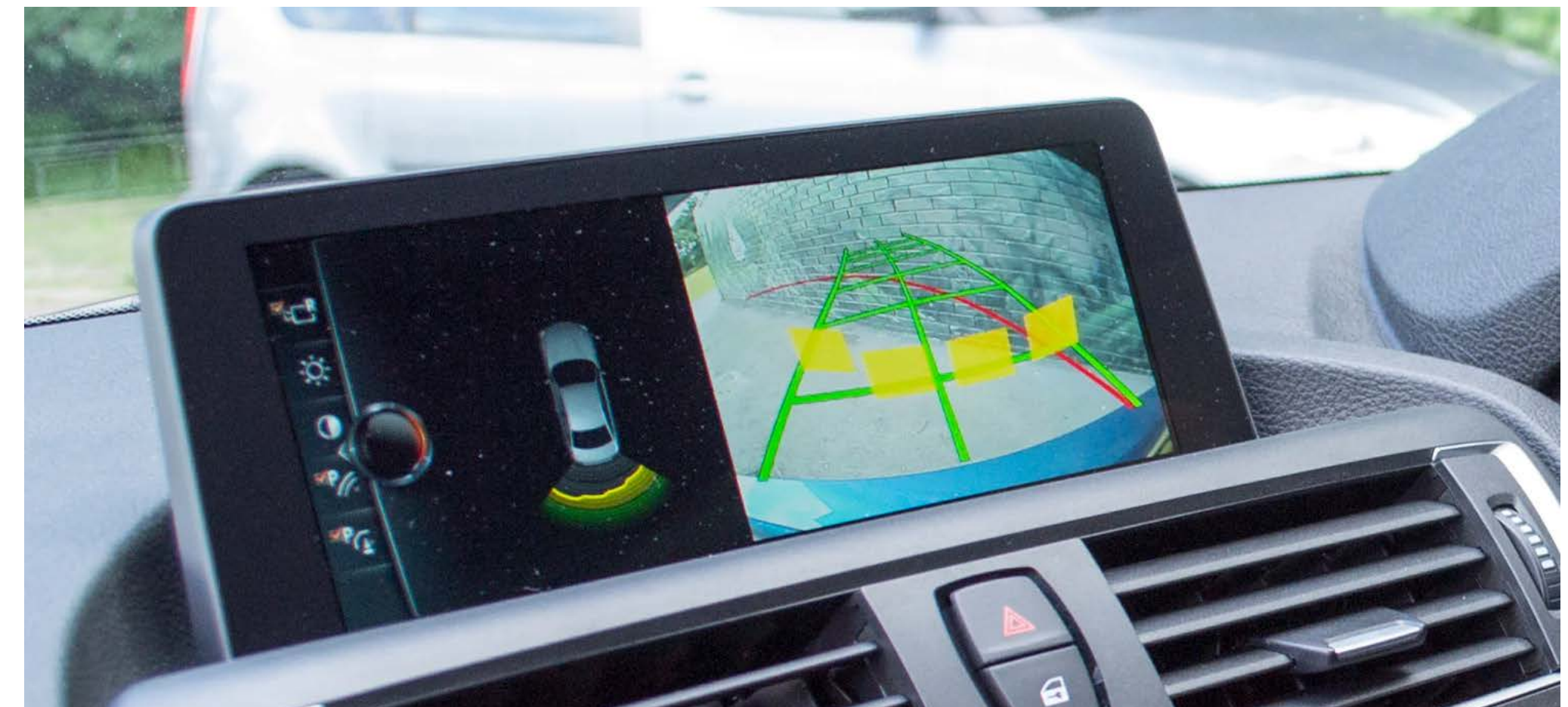


Plug & Play	No	Moveable Gridlines	Yes
Optical Park Overlay	Yes	Camera Inputs	Front & Rear
Coding	Not Required	Additional Information	

[Find Out More](#)

## BMW IDRIVE NBT EVO

MM-BMW-NBTEVO



Plug & Play	Yes	Moveable Gridlines	Yes
Optical Park Overlay	Yes	Camera Inputs	Front & Rear
Coding	Not Required	Additional Information	

[Find Out More](#)



## BMW ID7 IDRIVE MM-BMW-ID7



Plug & Play	Yes	Moveable Gridlines	Yes
Optical Park Overlay	Yes	Camera Inputs	Front & Rear
Coding	Not Required	Additional Information	

[Find Out More](#)

## BMW I3 MM-BMW-I3



Plug & Play	Yes	Moveable Gridlines	Yes
Optical Park Overlay	Yes	Camera Inputs	Front & Rear
Coding	Not Required	Additional Information	

[Find Out More](#)



## CITROEN & PEUGEOT SMEG

MM-PEU-SMEG



Plug & Play	Yes	Moveable Gridlines	Yes
Optical Park Overlay	Yes	Camera Inputs	Front & Rear
Coding	Not Required	Auto Switching	Yes

[Find Out More](#)

## CITROEN & PEUGEOT NAC

MM-PEU-NAC



Plug & Play	Yes	Moveable Gridlines	Yes
Optical Park Overlay	Yes	Camera Inputs	Front & Rear
Coding	Not Required	Additional Information	

[Find Out More](#)

# CAMERA INTEGRATION

NEXT DAY DELIVERY  
ON ORDERS BEFORE 3:30PM



## FORD SYNC 2.5 & SYNC 3 MM-FORD-SYNC



Plug & Play	Yes	Moveable Gridlines	No
Optical Park Overlay	No	Camera Inputs	Front & Rear
Coding	Not Required	Additional Information	

[Find Out More](#)

## FORD SYNC 4 MM-FORD-SYNC4



Plug & Play	Yes	Moveable Gridlines	No
Optical Park Overlay	No	Camera Inputs	Front & Rear
Coding	Not Required	Additional Information	

[Find Out More](#)



## JAGUAR & LAND ROVER GENERATION 3

MM-LR-G3



Plug & Play	Yes	Moveable Gridlines	Yes
Optical Park Overlay	Yes	Camera Inputs	Rear
Coding	Not Required	Additional Information	

**Please Note:** Vehicle must be automatic transmission.

[Find Out More](#)

## JAGUAR & LAND ROVER GENERATION 4

MM-LR-G4



Plug & Play	Yes	Moveable Gridlines	Yes
Optical Park Overlay	Yes	Camera Inputs	Front & Rear
Coding	Not Required	Auto Switching	Yes

[Find Out More](#)



## JAGUAR & LAND ROVER GENERATION 5

MM-LR-G5



Plug & Play	Yes	Moveable Gridlines	Yes
Optical Park Overlay	Yes	Camera Inputs	Front & Rear
Coding	Not Required	Additional Information	

[Find Out More](#)

## MERCEDES & VOLKSWAGEN AUDIO 15

MM-RC-MB-AU15



Plug & Play	Yes	Moveable Gridlines	No
Optical Park Overlay	No	Camera Inputs	Rear
Coding	Dongle Included	Additional Information	

[Find Out More](#)



## MERCEDES AUDIO 15 MM-RC-MB-V15



Plug & Play	Yes	Moveable Gridlines	No
Optical Park Overlay	No	Camera Inputs	Rear
Coding	Dongle Included	Additional Information	

[Find Out More](#)

## MERCEDES NTG 4.5 MM-MB-NTG4.5-AC



Plug & Play	Yes	Moveable Gridlines	Yes
Optical Park Overlay	Yes	Camera Inputs	Front & Rear
Coding	Not Required	Additional Information	

[Find Out More](#)



## MERCEDES NTG 5

MM-MB-NTG5-AC



Plug & Play	Yes	Moveable Gridlines	Yes
Optical Park Overlay	Yes	Camera Inputs	Front & Rear
Coding	Not Required	Additional Information	

[Find Out More](#)

## MERCEDES NTG 6 10"

MM-MBUX-NTG6-10



Plug & Play	Yes	Moveable Gridlines	No
Optical Park Overlay	No	Camera Inputs	Front & Rear / Two Triggers
Coding	Not Required	Additional Information	

**Please Note:** This interface is also PAL compatible to enable integration with a DVR system.

[Find Out More](#)





## MERCEDES NTG 6 7"

MM-MBUX-NTG6



Plug & Play	Yes	Moveable Gridlines	No
Optical Park Overlay	Yes	Camera Inputs	Front & Rear / Two Triggers
Coding	Not Required	Additional Information	

**Please Note:** This interface is also PAL compatible to enable integration with a DVR system.

The vehicle must have a 7" Screen.

[Find Out More](#)

## PORSCHE PCM 3.1

MM-PO-PCM3.1



Plug & Play	Yes	Moveable Gridlines	No
Optical Park Overlay	Yes	Camera Inputs	Rear
Coding	Not Required	Additional Information	

[Find Out More](#)



## RENAULT & DACIA MEDIA NAV MM-RC-REN-MV



Plug & Play	Yes	Moveable Gridlines	No
Optical Park Overlay	No	Camera Inputs	Front & Rear
Coding	Dongle Included	Additional Information	

[Find Out More](#)

## SKODA & VOLKSWAGEN MIB 2 (VD) MM-MIB2-VD



Plug & Play	Yes	Moveable Gridlines	Yes
Optical Park Overlay	Yes	Camera Inputs	Front & Rear
Coding	Not Required	Additional Information	

[Find Out More](#)



## VAUXHALL INTELLILINK

MM-VAUX-INT-AC



Plug & Play	Yes	Moveable Gridlines	Yes
Optical Park Overlay	Yes	Camera Inputs	Front & Rear
Coding	Not Required	Additional Information	

[Find Out More](#)

## VOLKSWAGEN MIB3

MM-MIB3-G8



Plug & Play	Yes	Moveable Gridlines	Yes
Optical Park Overlay	Yes	Camera Inputs	Front & Rear
Coding	Not Required	Additional Information	

[Find Out More](#)

# CAMERA INTEGRATION

NEXT DAY DELIVERY  
ON ORDERS BEFORE 3:30PM



## VOLKSWAGEN RGB DISCOVERY NAVIGATION

MM-VW-T6RCA

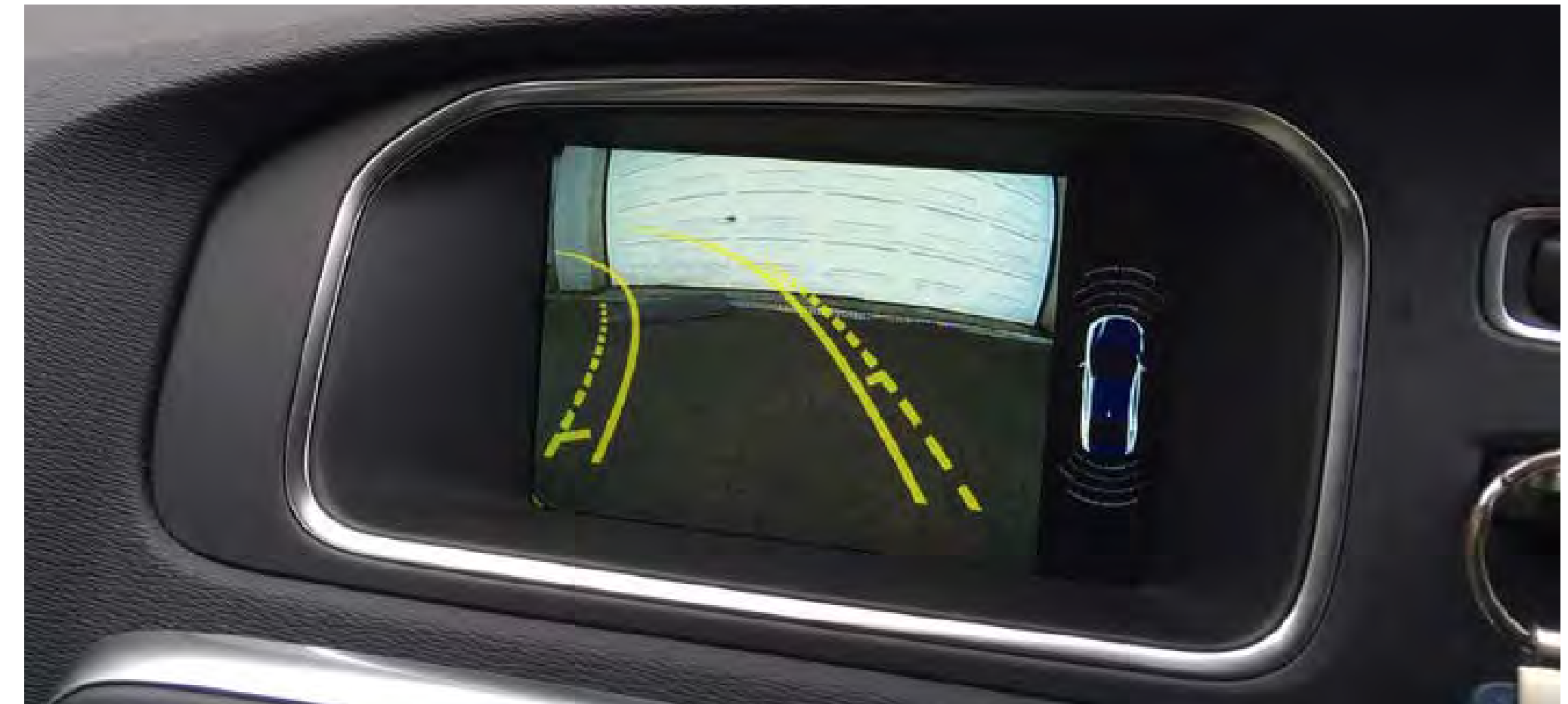


Plug & Play	No	Moveable Gridlines	Yes
Optical Park Overlay	Yes	Camera Inputs	Rear (Camera Included)
Coding	Required	Additional Information	

[Find Out More](#)

## VOLVO SENSUS

MM-VOL-SENSUS



Plug & Play	Yes	Moveable Gridlines	Yes
Optical Park Overlay	Yes	Camera Inputs	Front & Rear
Coding	Not Required	Additional Information	

[Find Out More](#)

# CAMERA KITS

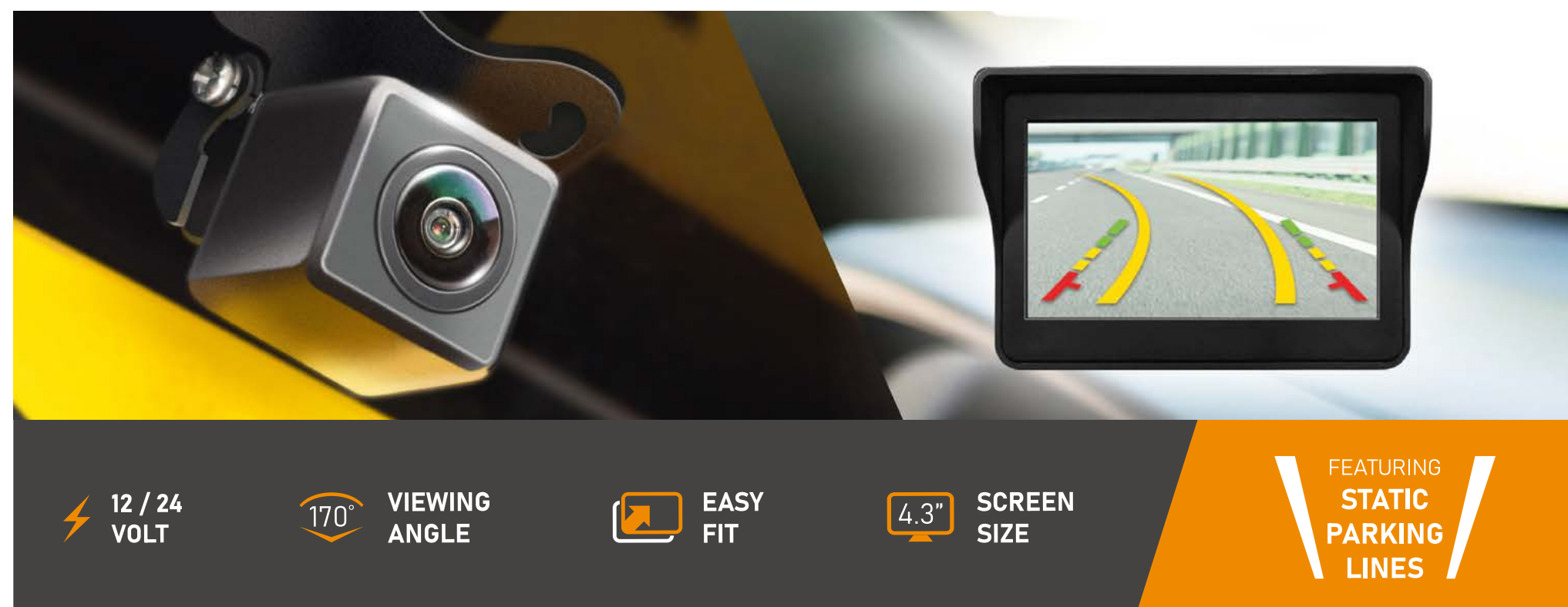
NEXT DAY DELIVERY  
ON ORDERS BEFORE 3:30PM





## REVERSING CAMERA KIT

MMHFUNI



12 / 24 VOLT

170° VIEWING ANGLE

EASY FIT

4.3" SCREEN SIZE

FEATURING  
STATIC  
PARKING  
LINES

Camera Specifications		Monitor Specifications	
Image Lens	CMOS	Screen Size	4.3"
Gridlines	Dynamic Moving	Resolution	480 x 272
TV Lines	700	Dimensions (mm)	115 (W) x 80 (H) x 25 (D)
Waterproof Rating	IP67	Built in voltage stabiliser	
Viewing Angle	110°	Extra-long 8M harness	
Dimensions	30mm x 35mm	12v & 24v compatible	

[Find Out More](#)

## REVERSING CAMERA & MIRROR DISPLAY

MMHF810



4.3" DISPLAY

TOUCH CONTROLS

BRIGHTNESS ADJUST

12 / 24 VOLT

FEATURING  
STATIC  
PARKING  
LINES

Camera Specifications		Monitor Specifications	
Image Lens	CMOS	Screen Size	4.3"
Gridlines	Static	Resolution	480 x 272
TV Lines	700	Built in voltage stabiliser	
Waterproof Rating	IP67	Extra-long 8M harness	
Viewing Angle	110°	12v & 24v compatible	

[Find Out More](#)



## REVERSING CAMERA & MIRROR DISPLAY

MMHF810D



Camera Specifications		Monitor Specifications	
Image Lens	CMOS	Screen Size	4.3"
Gridlines	Dynamic Moving	Resolution	480 x 272
TV Lines	700	Built in voltage stabiliser	
Waterproof Rating	IP67	Extra-long 8M harness	
Viewing Angle	110°	12v & 24v compatible	

[Find Out More](#)

# ULTRASONIC SENSORS

NEXT DAY DELIVERY  
ON ORDERS BEFORE 3:30PM







## MULTI ZONE DETECTION KIT

MMTDS



Rated Voltage	12DC/24VDC
Working Voltage	9-32V
Rated Working Current	(24V):20~80mA
Sensor Frequency	40±1KHz
With Display	70~90dB; with buzzer
Waterproof Rating	IP68

[Find Out More](#)

## PARKING SENSORS FLAT HEAD SET

(GLOSS) MM01GB / (MATT) MM01MB



Finish Type	Matt or Gloss
Volume & Sensitivity Adjustment	Yes
Sensor Head Size	21mm
Colour Code Friendly	Yes
Detection Range	0.2 - 1.5m
Hole Saw Size	19mm
Additional Features	Anti Hook

[Find Out More](#)

## PARKING SENSORS ANGLED HEAD SET

(MATT) MM05MB / (GLOSS) MM05GB



Finish Type	Rubber
Volume & Sensitivity Adjustment	Yes
Sensor Head Size	23mm
Colour Code Friendly	Yes
Detection Range	0.2 - 1.5m
Hole Saw Size	18.3mm
Additional Features	Anti Hook

[Find Out More](#)



## COMMERCIAL UNDER MOUNT PARKING SENSORS

MM04COM



Finish Type	Rubber
Volume & Sensitivity Adjustment	Yes
Sensor Head & Bracket Size	27mm & 60mm
Colour Code Friendly	No
Detection Range	0.2 - 1.5m
Hole Saw Size	21mm
Additional Features	Anti Hook, Adjustable Collars (7°, 10° & 13°)

[Find Out More](#)

## PARKING SENSORS RUBBER SET

MM03COM



Finish Type	Matt Rubber
Volume & Sensitivity Adjustment	Yes
Sensor Head Size	27mm
Colour Code Friendly	No
Detection Range	0.2 - 1.5m
Hole Saw Size	21mm
Additional Features	Anti Hook

[Find Out More](#)

## PARKING SENSORS DOUBLE ENGAGE RUBBER SET

MM03DE



**Double Engage:** Turns off the sensors if reverse is engaged twice within 3 seconds, allowing you to reverse with a trailer attached.

Finish Type	Matt or Gloss
Volume & Sensitivity Adjustment	Yes
Sensor Head Size	27mm
Colour Code Friendly	No
Detection Range	0.2 - 1.5m
Hole Saw Size	21mm
Additional Features	Anti Hook

[Find Out More](#)



## COMMERCIAL UNDER MOUNT DOUBLE ENGAGE PARKING SENSORS

MM04DE



**Double Engage:** Turns off the sensors if reverse is engaged twice within 3 seconds, allowing you to reverse with a trailer attached.

Finish Type	Matt or Gloss
Volume & Sensitivity Adjustment	Yes
Sensor Head Size	23mm
Colour Code Friendly	Yes
Detection Range	0.2 - 1.5m
Hole Saw Size	18.3mm
Additional Features	Anti Hook, Adjustable Collars (6°, 10° & 13°)

[Find Out More](#)

## PARKING SENSORS ANGLED FRONT KIT

MM05FS



Finish Type	Matt
Volume & Sensitivity Adjustment	Yes
Sensor Head Size	23mm
Colour Code Friendly	Yes
Detection Range	0.2 - 0.8m
Hole Saw Size	18.3mm
Additional Features	Anti Hook, Adjustable Collar

[Find Out More](#)

## PARKING SENSORS WATERPROOF SET

MM06WP



Finish Type	Matt Rubber
Volume & Sensitivity Adjustment	Yes
Sensor Head Size	27mm
Colour Code Friendly	No
Detection Range	0.2 - 1.5m
Hole Saw Size	21mm
Additional Features	Anti Hook

[Find Out More](#)



## VISUAL DISPLAY

MMDISP2



Compatible with our full range of parking sensors.

[Find Out More](#)

## AUDIBLE VISUAL DISPLAY

MMDISP1



LED light system, front and/or rear installation & display obstruction indicator.

[Find Out More](#)

## PARKING SENSOR EXTENSION CABLE

(2M) MMEXT2.0 / (5M) MMEXT5.0



Available in: 2M & 5M.

[Find Out More](#)



## 5M BUZZER EXTENSION CABLE MM5MBUZEXT



[Find Out More](#)

## 5M BUZZER DISPLAY EXTENTION CABLE MM5MDSPEXT



[Find Out More](#)

## BUZZER MMPSBUZ





## FLAT SENSOR HEADS

MM01MBH



Available in: Matt/Gloss finish.

[Find Out More](#)

## ANGLED SENSOR HEADS

MM05MBH



Available in: Matt/Gloss finish.

[Find Out More](#)

## RUBBER SENSOR HEADS

MM03COMH



[Find Out More](#)



# *RapidFit*

MAKING INSTALLATION SIMPLE



## PLUG & PLAY SOLUTION

INCREASE EFFICIENCIES AND REDUCE IN-LIFE COSTS

With over 25 years' of experience in installation, we understand the challenges faced by aftermarket equipment installers.

Rapid Fit is an exclusive, innovative, plug-and-play solution designed by Motormax. The system provides a professional and consistent installation process for a range of aftermarket safety equipment including alarm and lighting solutions, parking sensors, reverse cameras and sensor step extensions.

## REDUCE DOWNTIME AND IMPROVE FLEET EFFICIENCIES

Rapid Fit significantly reduces in-life visits to vehicles, improving the efficiency of fleets. Every installation is the same with this simplified process, reducing margin for error.

- 1 Consistent installation**  
Simplified process and reduce margin for error.
- 2 Save time and save money**  
Quicker installation time compared to conventional wiring.
- 3 De-skill labour**  
Qualified electricians not required.
- 4 Protect warranty**  
Non-destructive installation protects manufacturer warranty.
- 5 Reduce VOR**  
Eliminate the need for costly re-work due to faulty installation.

[Find Out More](#)



### RAPID FIT PLUG AND PLAY VS HARD WIRING

Rapid Fit connection time is over 20 times faster compared to traditional hard wiring. Find out how you can reduce labour cost by over a week\* in our short video.

[Click to watch](#)

(Based on 500 vehicles, may be dependent on product installed)\*



## PANEL VAN REAR T-PIECE

MM-ZEN-TP



**Compatible with:** Citroen Relay, Peugeot Boxer, Fiat Ducato

Component Kits	
White Noise Reverse Alarm	MM-RF-RA-1
Parking Sensors	MM-RF-PS-1
Parking Sensors Commercial	MM-RF-PSC-1

## PANEL VAN REAR T-PIECE

MM-MBS-TP

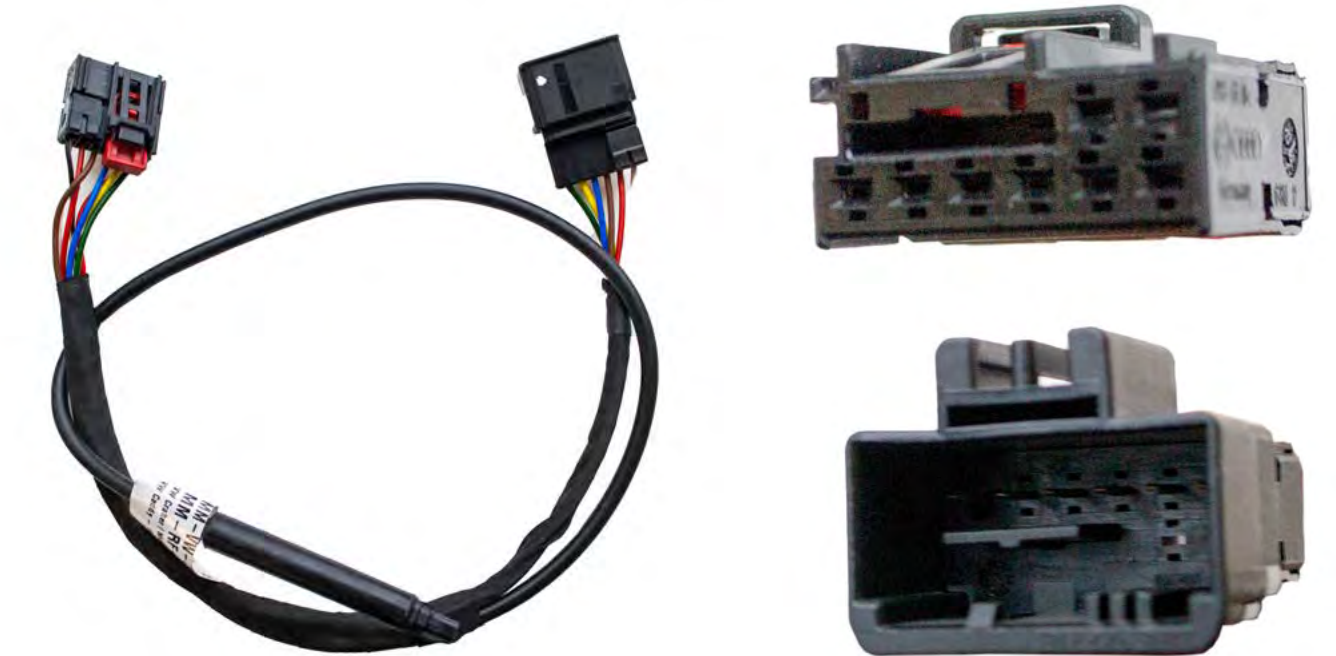


**Compatible with:** Mercedes Sprinter, Mercedes E-Sprinter

Component Kits	
White Noise Reverse Alarm	MM-RF-RA-2
Parking Sensors	MM-RF-PS-2
Parking Sensors Commercial	MM-RF-PSC-2

## PANEL VAN REAR T-PIECE

MM-VW-CRA-TP



**Compatible with:** Volkswagen Crafter, MAN TGE

Component Kits	
White Noise Reverse Alarm	MM-RF-RA-3
Parking Sensors	MM-RF-PS-3
Parking Sensors Commercial	MM-RF-PSC-3

## PANEL VAN REAR T-PIECE

MM-VW-T6RAL



Compatible with: Volkswagen T6

Component Kits	
White Noise Reverse Alarm	MM-RF-RA-4
Parking Sensors	MM-RF-PS-4
Parking Sensors Commercial	MM-RF-PSC-4

## PANEL VAN REAR T-PIECE

MM-FD-RAL



Compatible with: Ford Transit Custom

Component Kits	
White Noise Reverse Alarm	MM-RF-RA-5
Parking Sensors	MM-RF-PS-5
Parking Sensors Commercial	MM-RF-PSC-5

## PANEL VAN REAR T-PIECE

MM-TJ-TP



Compatible with: Ford Transit

Component Kits	
White Noise Reverse Alarm	MM-RF-RA-6
Parking Sensors	MM-RF-PS-6
Parking Sensors Commercial	MM-RF-PSC-6

## PANEL VAN REAR T-PIECE

MM-PSA-RAL



**Compatible with:** Citroen Dispatch, Peugeot Expert, Toyota Proace, Vauxhall Combo

Component Kits	
White Noise Reverse Alarm	MM-RF-RA-7
Parking Sensors	MM-RF-PS-7
Parking Sensors Commercial	MM-RF-PSC-7

## PANEL VAN REAR T-PIECE

MM-FC-TP



**Compatible with:** Ford Transit Connect

Component Kits	
White Noise Reverse Alarm	MM-RF-RA-8
Parking Sensors	MM-RF-PS-8
Parking Sensors Commercial	MM-RF-PSC-8

## PANEL VAN REAR T-PIECE

MM-DMAX-TP



**Compatible with:** Isuzu D-Max

Component Kits	
White Noise Reverse Alarm	MM-RF-RA-9
Parking Sensors	MM-RF-PS-9
Parking Sensors Commercial	MM-RF-PSC-9

## PANEL VAN REAR T-PIECE

MM-RK-TP



Compatible with: Renault Kangoo

Component Kits	
White Noise Reverse Alarm	MM-RF-RA-11
Parking Sensors	MM-RF-PS-11
Parking Sensors Commercial	MM-RF-PSC-11

## PANEL VAN REAR T-PIECE

MM-MV-TP



Compatible with: Mercedes Vito

Component Kits	
White Noise Reverse Alarm	MM-RF-RA-12
Parking Sensors	MM-RF-PS-12
Parking Sensors Commercial	MM-RF-PSC-12

## PANEL VAN REAR T-PIECE

MM-RT-TP



Compatible with: Ford Ranger

Component Kits	
White Noise Reverse Alarm	MM-RF-RA-13
Parking Sensors	MM-RF-PS-13
Parking Sensors Commercial	MM-RF-PSC-13

## CHASSIS VAN REAR T-PIECE

MM-MS-CC-TP



**Compatible with:** Mercedes Sprinter, Volkswagen Crafter, Fiat Ducato, Peugeot Boxer, Citroen Relay, Vauxhall Movano, Renault Master

Component Kits	
White Noise Reverse Alarm	MM-RF-RA-2C
Parking Sensors	MM-RF-PS-2C
Parking Sensors Commercial	MM-RF-PSC-2C

## CHASSIS VAN REAR T-PIECE

MM-FT-CC-TP



**Compatible with:** Ford Transit

Component Kits	
White Noise Reverse Alarm	MM-RF-RA-6C
Parking Sensors	MM-RF-PS-6C
Parking Sensors Commercial	MM-RF-PSC-6C

## CHASSIS VAN REAR T-PIECE

MM-LDV-CC-RA



**Compatible with:** Maxus ED 9

Component Kits	
White Noise Reverse Alarm	MM-RF-RA-14C
Parking Sensors	MM-RF-PS-14C
Parking Sensors Commercial	MM-RF-PSC-14C

# WARNING ALARMS

NEXT DAY DELIVERY  
ON ORDERS BEFORE 3:30PM





## TONAL DOUBLE ENGAGE REVERSE ALARM

MMRA01



**Double Engage:** Turns off the reverse alarm if reverse is engaged twice within 3 seconds.

12-24V

95dB

Tonal

IP67

Epoxy sealed

Dimensions - 100mm x 70mm

[Find Out More](#)

## WHITE NOISE DOUBLE ENGAGE REVERSE ALARM

MMRAWN



**Double Engage:** Turns off the reverse alarm if reverse is engaged twice within 3 seconds.

12-24V

95dB

White Noise

IP67

Epoxy sealed

Dimensions - 100mm x 70mm

[Find Out More](#)

## LEFT TURN ALARM

MMLTA-01



12-24V

100dB

Talking alarm

IP67

Epoxy sealed

Dimensions - 100mm x 70mm

Built in indicator module

[Find Out More](#)



## MULTI VOICE PROGRAMMABLE WARNING SPEAKER

MMMVS



Warning - Handbrake Not applied	Warning - Seat Belt Not Engaged
Warning - Boom Not Stowed	Warning - Legs Not Stowed
Warning - Vehicle Overweight	Warning - Tipper Raised
Warning - Offside Door Open	Warning - Nearside Door Open

**Please Note:** Bespoke voices can be programmed on request.



# HEATED SEATS

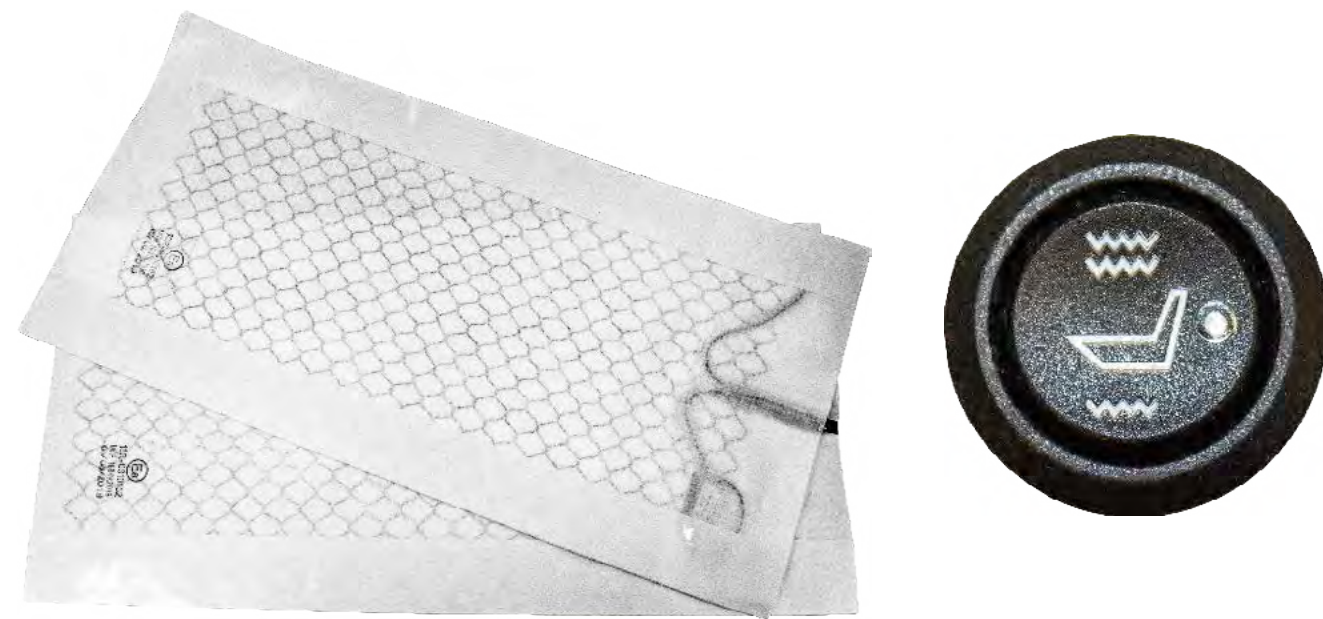
NEXT DAY DELIVERY  
ON ORDERS BEFORE 3:30PM





## 2 PAD & 2 SETTING SWITCH

MMHS01



Features	
Carbon Fibre	1 seat included
2 stage heat setting	2 heat pad elements per seat (back and base of seat)
Heat equivalent to OEM fitment	PCP board for continuous heat flow

[Find Out More](#)

## 4 PAD & 2 SETTING SWITCH

MMHS02

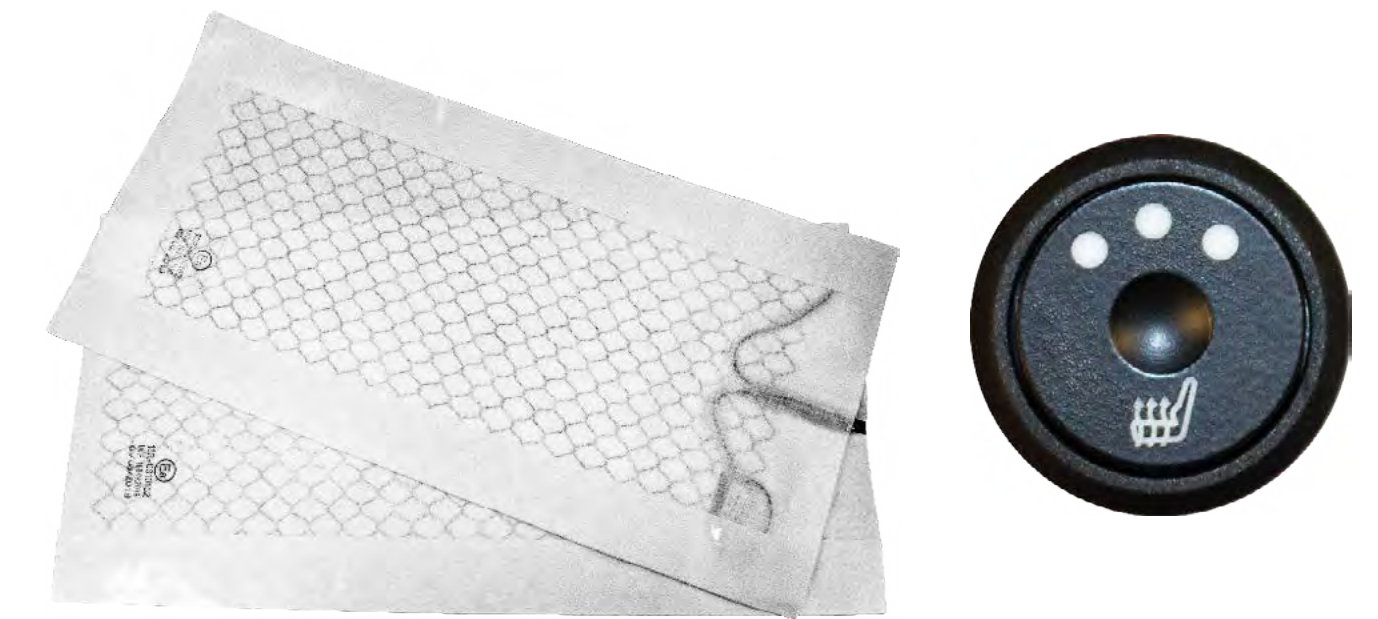


Features	
Carbon Fibre	1 seat included
2 stage heat setting	4 heat pad elements per seat (back and base of seat)
Heat equivalent to OEM fitment	PCP board for continuous heat flow

[Find Out More](#)

## 2 PAD & 3 SETTING SWITCH

MMHS03



Features	
Carbon Fibre	1 seat included
3 stage heat setting	2 heat pad elements per seat (back and base of seat)
Heat equivalent to OEM fitment	PCP board for continuous heat flow

[Find Out More](#)

# ACCESSORIES

NEXT DAY DELIVERY  
ON ORDERS BEFORE 3:30PM





## 4 PIN DIN EXTENSION CABLE

(1M) MM4PINDIN1M / (3M) MM4PINDIN3M  
(5M) MM4PINDIN5M / (10M) MM4PINDIN10M  
(15M) MM4PINDIN15M / (20M) MM4PINDIN20M



[Find Out More](#)

## IPC EXTENSION CABLE

(3M) MMIP-3MEXT / (5M) MMIP-5MEXT  
(10M) MMIP-10MEXT / (15M) MMIP-15MEXT  
(20M) MMIP-20MEXT



[Find Out More](#)

## VIDEO EXTENSION CABLE

(1.2M) MMVIDEXT1.2M / (2M) MMVIDEXT2M  
(3M) MMVIDEXT3M / (5M) MMVIDEXT5M  
(7.5M) MMVIDEXT7.5M / (10M) MMVIDEXT10M



[Find Out More](#)



## MALE PHONO TO MALE DIN

MM4PINDIN2



[Find Out More](#)

## FEMALE PHONO TO FEMALE DIN

MM4PINDIN4



[Find Out More](#)

## 4 PIN DIN SPLITTER

MM4PINDINSPL

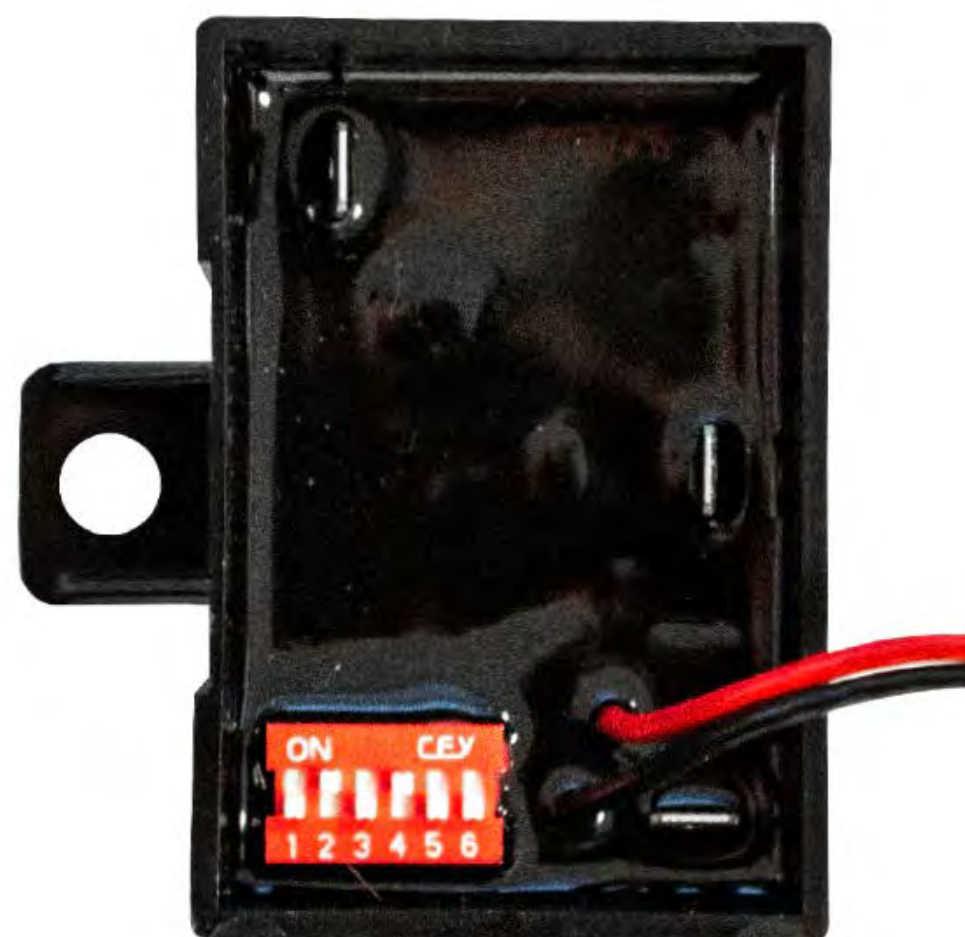


[Find Out More](#)



## SPEED SWITCH - ANALOGUE

MMSPSW

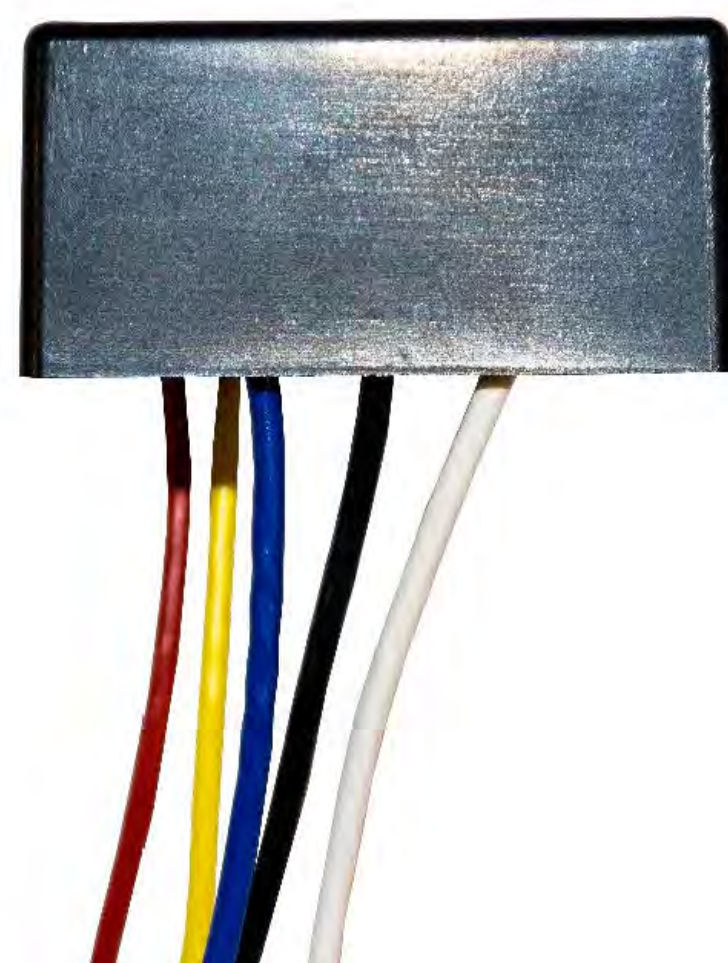


Allows you to turn off required pieces of equipment. Disengaging them above a certain speed. 12-24v.

[Find Out More](#)

## INDICATOR MODULE

MMINDMOD



Stabilises a pulsing indicator feed to a solid 12-24v output.

[Find Out More](#)

## RCA ADAPTOR

(MALE) MMRCAADPM / (FEMALE) MMRCAADPF



[Find Out More](#)



## PARKING SENSOR - CAN BOX MMPSSM2



CAN Box for front parking sensors.  
Reads speed and handbrake.

[Find Out More](#)

## MULTI PURPOSE CAN BOX MMCANMP



Reads the vehicles CAN network and supplies the following.

Left Indicator under 12MPH	Left Indicator
Right Indicator under 12MPH	Right Indicator
Reverse	Ignition
Handbrake	Footbrake
Speed under 12MPH	

[Find Out More](#)

## MULTI PURPOSE CAN BOX MMCAMSCAN



Reads the vehicles CAN network and supplies the following.

Left Indicator under 15MPH	Reverse
Right Indicator under 15MPH	Speed under 15MPH

[Find Out More](#)



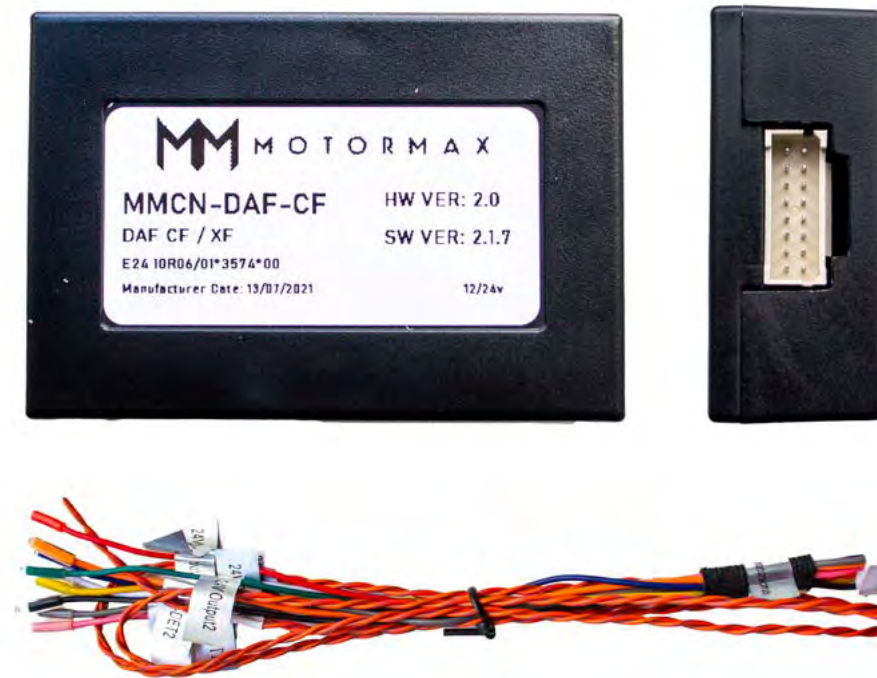
## CAN CLICK MMCC01



Connects to the vehicles CAN network in a non-destructive manner.

[Find Out More](#)

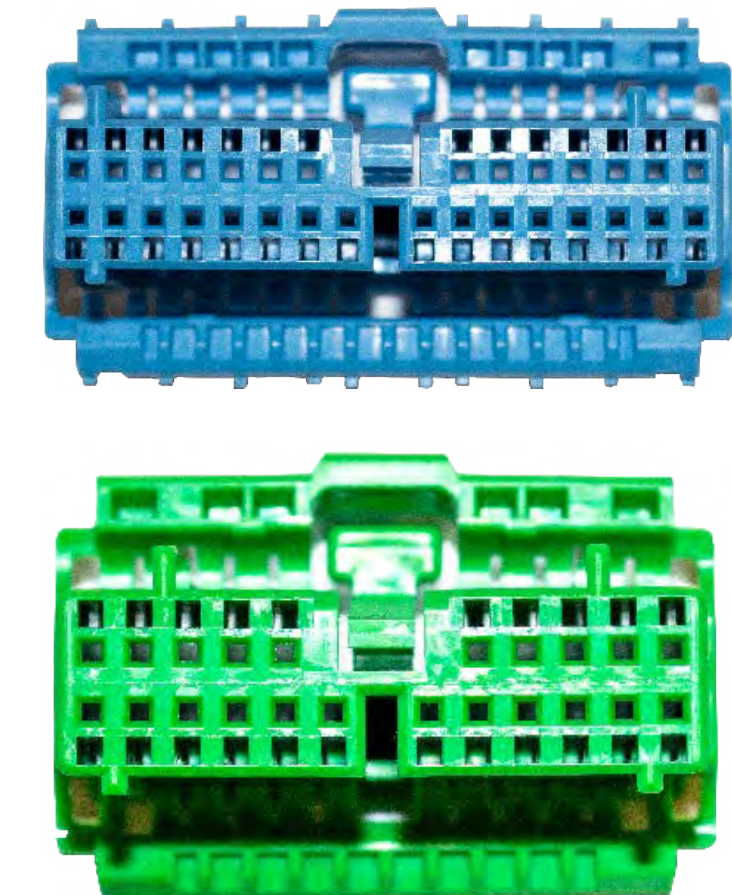
## MOTORMAX CAN BUS INTERFACE 12-24V



**Available for:** Citroen, DAF, Fiat, Ford, Hyundai, Isuzu, Iveco, MAN, Maxus, Mercedes, Nissan, Renault, Skoda, Scania, Toyota, Vauxhall, Volvo, VW

Left Indicator under 15MPH	Left Indicator
Above/Below speed	Right Indicator
Reverse	Ignition
Handbrake	Footbrake
Speed under 10MPH & handbrake off	

## PINS & PLUGS



A range of pins and plugs are available on request.





## 7 PIN SUZI KIT MMSUZI7P



Includes suzi cable, male suzi socket & female suzi socket.

[Find Out More](#)

## 7 PIN SUZI SOCKET (MALE) MMSUZISOCKETM / (FEMALE) MMSUZISOCKETF



## 7 PIN SUZI CABLE MMSUZICABLE





## VOLTAGE STABILISER 12-24V MM1224-STAB



[Find Out More](#)

## TWO WAY SWITCH MMSW01



[Find Out More](#)

## MOMENTARY SWITCH MM-MSW01





## 30MM SIDE CAMERA WEDGE MMSVSM



30mm wedge for mounting side cameras.

[Find Out More](#)

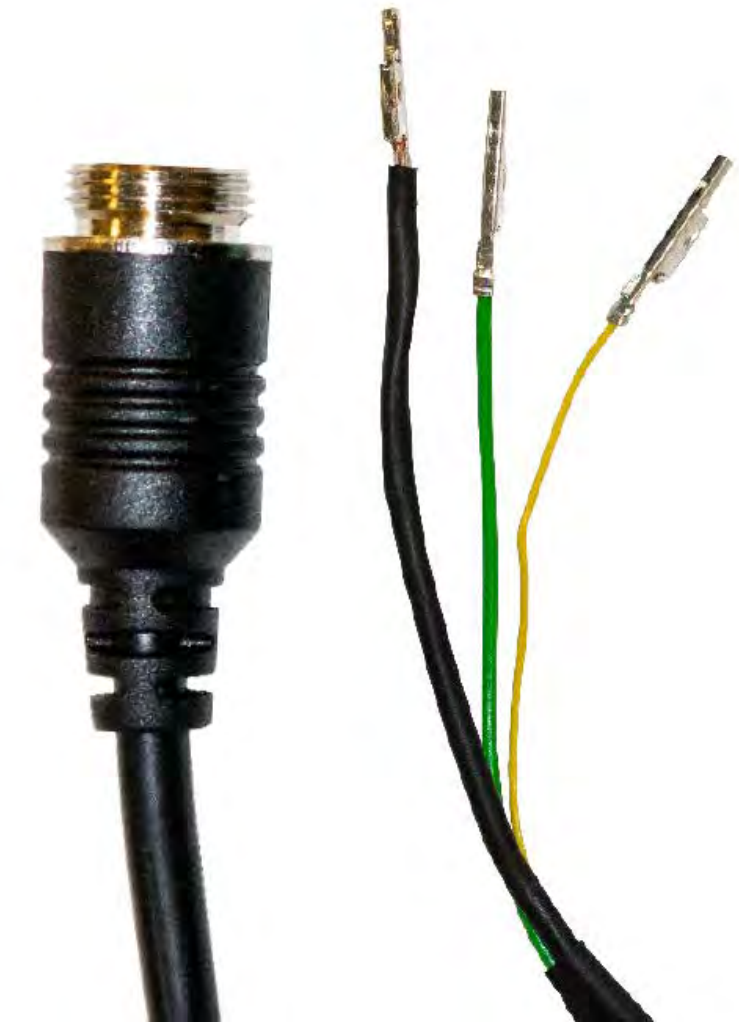
## SCANIA INTEGRATION CABLE MM-SCANIA-CR



Integrate a camera into a Scania R series factory screen.

[Find Out More](#)

## VOLVO INTEGRATION CABLE MMVOL-CAMINT



Integrate a camera into a Volvo series factory screen.  
**Please note:** The video ECU has to be fitted from factory for integration to be possible.

[Find Out More](#)

Motormax,  
Block 1, Latchford House,  
Shenstone Business Park,  
Lynn Ln, Shenstone, Lichfield WS14 0SB

0121 353 3663  
[www.motormax.co.uk](http://www.motormax.co.uk)  
[info@motormax.co.uk](mailto:info@motormax.co.uk)

