

# LOADING RAMPS

# M055



PRODUCT FAMILY:

## M055 M065 M074 M085 M076

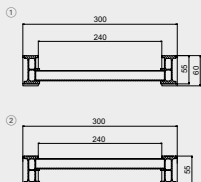
MAX. LOADING CAPACITY PER PAIR:

## 3.500 kg

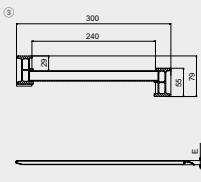
This wide range of compact and space-saving ramps is particularly suitable for moving rubber-wheeled vehicles used in various sectors, from agriculture to gardening and construction to earth moving, such as: mini tractors, mini excavators, mini dumpers, etc. Available with different types of head connections, they are perfectly suited to light trailers' housings.

The range is made with raised edges, without raised edges or with only one raised edge and the product is supplied with the required anchoring tabs.

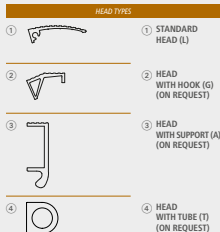
Upon request, the range without raised edges can be supplied with a vulcanized rubber covering for the specific handling of compactor rollers and vehicles with steel tracks.



① WITH RAISED EDGES  
② WITHOUT RAISED EDGES



③ WITH ONLY ONE RAISED EDGE



Model	Item code		Loading capacity per pair kg									
			Wheelbase			Standard length	Length with head type ②	Length with head type ③	Length with head type ④	Standard ramp dimension with raised edge	Standard ramp dimension without raised edges	Weight per pair kg
			1000 mm	1250 mm	1500 mm							
M055/15	MM055BL.30.15	MM055SL.30.15	2500	2500	2500	1495	1442	1346	1388	83	59	15
M055/20	MM055BL.30.20	MM055SL.30.20	1500	2000	2500	1995	1942	1846	1888	83	59	20
M055/25	MM055BL.30.25	MM055SL.30.25	1000	1200	1500	2495	2442	2346	2388	83	59	25
M055/30	MM055BL.30.30	MM055SL.30.30	750	850	1000	2995	2942	2846	2888	83	59	29
M055/35	MM055BL.30.35	MM055SL.30.35	600	660	750	3495	3442	3346	3388	83	59	34
M055/40	MM055BL.30.40	MM055SL.30.40	500	540	600	3995	3942	3846	3888	83	59	39

Minimum width of the wheel or track 150 mm. Maximum width of the wheel or track 220 mm.

The range is available with only one raised edge.

### ANCHORING SYSTEMS



**Aluminum tab (standard):** The advantage of this anchoring system lies in the fact that the tab can be positioned along a large portion of the ramp's width, and can turn inside the head connection into which it has been inserted. The system comes with end caps for the head to prevent the tab disconnecting from the ramp during use.



**Steel pin (on request):** A galvanized steel pin with a diameter of 14 mm and a 24-mm-diameter head can be inserted through the holes in the standard head connection of the ramp and the loading bed.

### HANDLING SYSTEMS



**Nylon handles (on request):** The product can be supplied with robust nylon handles to facilitate handling. Available in lengths of 30 cm and 60 cm, according to the model of the product selected.

Recommended nylon handles for manual handling: 4 pcs each ramp. Recommended nylon handles for handling by lifting equipment: 2 pcs minimum each ramp.