

# LOADING RAMPS

# M050



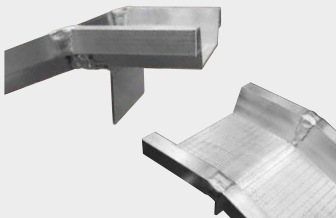
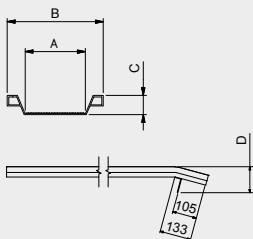
PRODUCT FAMILY:

## M050

MAX. LOADING CAPACITY  
PER PAIR:

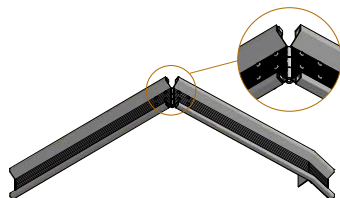
## 1.500 kg

These aluminium ramps offer an excellent compromise between high load capacity and low weight. They are robust, easy to handle and have a non-slip surface, obtained through coining. With an internal width of 155 mm and 45 mm high raised containment edges, these ramps are particularly suitable for the safe loading and unloading of motorcycles, electric generators, compressors and other items of equipment. To optimise transport, this range of ramps can be supplied either as the hinged, folding version or as the bayonet coupling version. With the hinged, folding version, the loading capacity reduces to 300 kg per pair for all lengths.

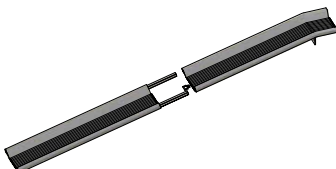


Model	Item code	Loading capacity per pair kg			Length mm	Internal width A mm	External width B mm	Height of raised edge C mm	Overall ramp dimensions D mm	Weight per pair kg
		0 mm	500 mm	1000 mm						
M050/10	MM050B0.25.10	800	1500	1500	1000	155	246	45	100	9
M050/15	MM050B0.25.15	800	1479	1500	1500	155	246	45	100	13
M050/20	MM050B0.25.20	739	986	1479	2000	155	246	45	100	17
M050/25	MM050B0.25.25	532	665	887	2500	155	246	45	100	20
M050/30	MM050B0.25.30	419	503	628	3000	155	246	45	100	24
M050/35	MM050B0.25.35	346	404	485	3500	155	246	45	100	28

With the hinged, folding version, the loading capacity reduces to 300 kg per pair for all lengths.



HINGED VERSION (ON REQUEST)



BAYONET COUPLING VERSION (ON REQUEST)