

# Two Masterworks

For Handbell Ensemble and C Instrument

## Come Ye Lofty, Come Ye Lowly

Handbells Used: 14



OLD BRETON MELODY  
with THE FIRST NOEL

Arranged by *MARTHA LYNN THOMPSON (ASCAP)*

*Allegretto* (♩ = ca. 66-69)

\* To purchase a full-length performance recording of this piece, go to [jubilatemusic.com](http://jubilatemusic.com) and enter JMGxxxx in the search bar.

© Copyright 2024 CandelaWorks Music (ASCAP), a division of Jubilate Music Group, LLC,  
PO Box 3607, Brentwood, TN 37024

International Copyright Secured. All Rights Reserved.

11 12

13 14

15 16

17 18

19 20

*mp*

*Bring out melody in down-stemmed notes.*

21 22

23 24

25 26

*ff*

27 28

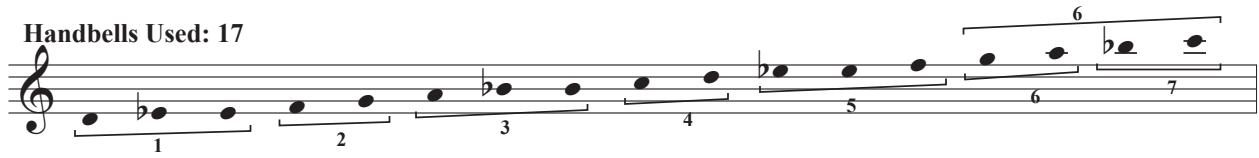
*rit.*

*f*

# Sheep May Safely Grace

(Abridged)

Handbells Used: 17



Johann Sebastian Bach (1685-1750)

By **MARTHA LYNN THOMPSON** (ASCAP)

**Allegretto pastorale** (♩ = ca. 104)

Musical score for 'Sheep May Safely Grace' (Abridged) by Martha Lynn Thompson. The score is in G major and 3/4 time. It features a handbell part (measures 1-7), a vocal part (measures 1-7), and a C Instrument part (measures 8-14). The handbell part is marked *mf*. The vocal part is marked *mf*. The C Instrument part is marked *mp* and *f*. The score is watermarked with 'PREVIEW ONLY - PURCHASE REQUIRED'.

\* To purchase a full-length performance recording of this piece, go to [jubilatemusic.com](http://jubilatemusic.com) and enter JMGxxxx in the search bar.

© Copyright 2024 CandelaWorks Music (ASCAP), a division of Jubilate Music Group, LLC,

PO Box 3607, Brentwood, TN 37024

International Copyright Secured. All Rights Reserved.

The copying of this music is prohibited by law and is not covered by CCLI or OneLicense.net.

JMG1397

Musical score for piano, measures 15-30. The score is written in a single system with two staves (treble and bass clef) and a grand staff bracket. The key signature is one flat (B-flat). The tempo and dynamics are indicated by markings such as *mf*, *mp*, and *mf*. The score includes various musical notations such as notes, rests, slurs, and articulation marks. The measures are numbered 15 through 30. A large red watermark is overlaid diagonally across the score, reading "PREVIEW ONLY LEGAL USE REQUIRES PURCHASE".

Measures 15-18: Treble clef has a melodic line with a slur over measures 15-16 and another slur over measures 17-18. Bass clef has a rhythmic accompaniment. Dynamics: *mf* (measures 17-18). Hand indicators: LV (measures 16, 18), R (measure 17).

Measures 19-22: Treble clef has a melodic line with a slur over measures 19-20 and another slur over measures 21-22. Bass clef has a rhythmic accompaniment. Dynamics: *mf* (measures 21-22). Hand indicators: LV (measures 19, 20), R (measures 21, 22).

Measures 23-26: Treble clef has a melodic line with a slur over measures 23-24 and another slur over measures 25-26. Bass clef has a rhythmic accompaniment. Dynamics: *mp* (measures 23-24), *mf* (measures 25-26). Hand indicators: LV (measures 23-24), R (measures 25-26).

Measures 27-30: Treble clef has a melodic line with a slur over measures 27-28 and another slur over measures 29-30. Bass clef has a rhythmic accompaniment. Dynamics: *mf* (measures 29-30). Hand indicators: LV (measures 27-28), R (measures 29-30).

Musical score for piano, measures 31-42. The score is written in a single system with two staves (treble and bass clef). The key signature is one flat (B-flat). The tempo is marked *mp* (mezzo-piano) and *mf* (mezzo-forte). The score includes a first ending (1.) and a second ending (2.) starting at measure 41. A *poco rit. 2nd time* marking is present above measure 41. The score is overlaid with a large red watermark that reads "PREVIEW ONLY LEGAL USE REQUIRES PURCHASE".

Measures 31-34: Treble clef has a dotted quarter note, a quarter note, and a half note. Bass clef has chords and moving lines. Hand positions are labeled LV and R.

Measures 35-37: Treble clef has a half note and a quarter note. Bass clef has chords and moving lines. Dynamic marking *mf* is present.

Measures 38-39: Treble clef has a half note and a quarter note. Bass clef has chords and moving lines. Dynamic markings *mp* and *mf* are present.

Measures 40-42: Treble clef has a half note and a quarter note. Bass clef has chords and moving lines. Dynamic markings *mp* and *mf* are present. First ending (1.) and second ending (2.) are indicated.

# Come Ye Lofty, Come Ye Lowly

OLD BRETON MELODY  
THE FIRST NOEL

Allegretto (♩ = ca. 66-69)

Arranged by *MARTHA LYNN THOMPSON (ASCAP)*

Musical score for 'Come Ye Lofty, Come Ye Lowly' in 4/4 time, key of B-flat major. The score consists of three staves of music. The first staff begins with a treble clef, a key signature of one flat, and a 4/4 time signature. It includes a repeat sign and a first ending bracket. The second staff continues the melody with various note values and slurs. The third staff concludes the piece with a repeat sign and a first ending bracket, ending with a 'rit.' (ritardando) marking.

# Sheep May Safely Graze

(Abridged)

Johann Sebastian Bach (1685-1750)

Allegretto pastorale (♩ = ca. 104)

Arranged by *MARTHA LYNN THOMPSON (ASCAP)*

Musical score for 'Sheep May Safely Graze' in 3/4 time, key of B-flat major. The score consists of four staves of music. The first staff begins with a treble clef, a key signature of one flat, and a 3/4 time signature. It includes a repeat sign and a first ending bracket. The second staff continues the melody with various note values and slurs, including a 'mp' (mezzo-piano) dynamic marking. The third staff features a 'mf' (mezzo-forte) dynamic marking and a 3-measure rest. The fourth staff concludes the piece with a repeat sign and a first ending bracket, ending with a 'poco rit. 2nd time' marking.

\*Flute should play an octave higher.

© Copyright 2024 CandelaWorks Music (ASCAP), a division of Jubilate Music Group, LLC,  
PO Box 3607, Brentwood, TN 37024  
International Copyright Secured. All Rights Reserved.

The publisher hereby grants non-transferable permission to reprint this part for rehearsal and performance.  
The music must be reproduced with the title and all credits, includ