

# CHRISTMAS CRADLESONG

for unison voices and opt. 8 handbells, accompanied\*

Words and Music by  
TERRY D. TAYLOR

Gently rhythmic (♩ = ca. 108)

PIANO

*mf*

5 ALL VOICES

*mf*

Ma - ry needs a room and bed. Her ba - by's on the way!

10

Jo - seph finds a hum - ble shed with cat - tle, sheep, and hay.

\*Handbell part is on page 8.

© Copyright 2024 CandelaWorks Music (ASCAP), a division of Jubilate Music Group, LLC.  
P.O. Box 3607, Brentwood, TN 37024.  
All Rights Reserved. Printed in USA.

The copying of this music is prohibited by law and is not covered by CCLI or OneLicense.net

JMG1382

14 HANDBELLS

15

Musical notation for Handbells and Soprano voice. The Handbells part is on a single staff with a treble clef and a flat key signature. The Soprano voice part is on a single staff with a treble clef and a flat key signature. The lyrics are: "There, where sheep\_ and cat - tle sleep,\_ her ti - ny babe\_ is born."

15

Piano accompaniment for the first system. It consists of two staves: a treble clef staff and a bass clef staff. The music is in a flat key signature and features a steady eighth-note accompaniment in the bass and chords in the treble.

19

Musical notation for Handbells and Soprano voice. The Handbells part is on a single staff with a treble clef and a flat key signature. The Soprano voice part is on a single staff with a treble clef and a flat key signature. The lyrics are: "An - gels sing\_ and shep - herds kneel\_ to wor - ship Christ, the Lord."

Piano accompaniment for the second system. It consists of two staves: a treble clef staff and a bass clef staff. The music is in a flat key signature and features a steady eighth-note accompaniment in the bass and chords in the treble.

23

Musical notation for Handbells and Soprano voice. The Handbells part is on a single staff with a treble clef and a flat key signature. The Soprano voice part is on a single staff with a treble clef and a flat key signature. The lyrics are: "Christ has come\_ with us to dwell, in a bed\_ of straw. God with us,\_ Em -"

23

Piano accompaniment for the third system. It consists of two staves: a treble clef staff and a bass clef staff. The music is in a flat key signature and features a steady eighth-note accompaniment in the bass and chords in the treble.

28

man - u - el! Je - sus, Lord of all.

*mf*

32

Wise men fol - low heav-en's star to find the ho - ly boy. Cost - ly gifts and

*mf*

37

40

hum - ble hearts they of - fer Him with joy! Christ has come with

*f*

40

41

us to dwell, in a bed of straw. God with us, Em -

45

man - u - el! Je - sus, Lord of all. Christ has come with

49

us to dwell, in a bed of straw. God with us, Em -

53

man - u - el! Je - sus, Lord of all. God with us, Em -

57

man - u - el! Je - sus, Lord of

*mp* *molto rit.*

61

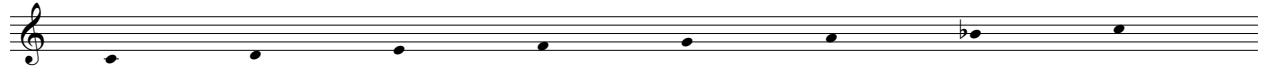
all, Lord of all.

*pp* *opt. div.* *pp*

# CHRISTMAS CRADLESONG

## HANDBELLS

Handbells Used: 8



TERRY D. TAYLOR

Gently rhythmic (♩ = ca. 108)

1-5      5      6 6-14      9      15      16

17      18      19      20      21      22

23 23-31      9      32      33      34      35

36      37      38      39      40 40-47      8      48

49      50      51      52      53      54

55      56      57      58      59

60      61      62      63      64

*mf*      *f*      *mp*      *molto rit.*      *pp*

© Copyright 2024 CandelaWorks Music (ASCAP), a division of Jubilate Music Group, LLC.  
 P.O. Box 3607, Brentwood, TN 37024.  
 All Rights Reserved. Printed in USA.

The publisher hereby grants non-transferable permission to reprint this instrumental part for rehearsal and performance.  
 The music must be reproduced with the title and all credits including the copyright notice.