

# CHRISTUS RESURREXIT

(Christ Is Risen)

for S.A.T.B. voices, opt. B♭ trumpet, accompanied\*

Words by  
SALLY K. ALBRECHT

Music by  
JAY ALTHOUSE

Brightly (♩ = ca. 116)  
+ Tpt.

ACCOMP.

3

5

S.A. *f*

Chris - tus re - sur - rex - it, al - le - lu - ia.

T.B. *f*

5

\* To purchase a full-length performance recording of this piece, go to [jubilatemusic.com](http://jubilatemusic.com) and enter JMG1298 in the search window.

Part for B♭ Trumpet is on page 11.

© Copyright 2024 CandelaWorks Music (ASCAP), a division of Jubilate Music Group, LLC.  
P.O. Box 3607, Brentwood, TN 37024.  
All Rights Reserved. Printed in USA.

The copying of this music is prohibited by law and is not covered by CCLI or OneLicense.net

JMG1298

7

Chris - tus re - sur - rex - it, al - le - lu - ia.

- Tpt.

9

Christ is ris - en on this day. Now the stone is rolled a - way.

11

Al - le - lu, al - le - lu, al - le - lu, al - le - lu - ia.

+ Tpt.

Empty musical staves for vocal and piano parts.

Piano accompaniment for measures 13-15. The music features a melodic line in the right hand and a bass line in the left hand. A dynamic marking of *mf* is present.

16  $\%$  *mf* (*f* 2nd time)

Chris - tus re - sur - rex - it, al - le - lu - ia.

*mf* (*f* 2nd time)

Chris - tus re - sur - rex - it, al - le -

(*f* 2nd time)

18 (*cresc. 1st time*)

Chris - tus re - sur - rex - it, al - le - lu - ia.

(*cresc. 1st time*)

lu - ia. Chris - tus re - sur - rex - it.

- Tpt.

(*cresc. 1st time*)

20

*f*

Death is con- quered, we are free. Christ has won the vic - to - ry.

*f*

*f*

22

Al - le - lu, al - le - lu, al - le - lu, al - le - lu - ia For

+ Tpt.

24

this is the day of re - joic - ing. We

24 + Tpt.

praise Him as life is re - stored. Give

- Tpt.

+ Tpt.

thanks to our God for His bless - ings, and

- Tpt.

+ Tpt.

praise our liv - ing Lord.

*sfz*

- Tpt.

+ Tpt.

33

*f*

Chris - tus re - sur-rex - it, al - le - lu - ia.

33

35

Chris - tus re - sur-rex - it, al - le - lu - ia.

- Tpt.

37

He who died on Cal - va - ry, born to set His peo - ple free.

2nd time to Coda  
(p. 10, m. 59)

2nd time to Coda  
(p. 10, m. 59)

Al - le - lu, al - le - lu, al - le - lu, al - le - lu - ia, al - le -

+ Tpt. - Tpt.

41 *rit.* lu - ia. Dark - ness came to

[43] Expressively (♩ = ca. 76-80)  
*opt. solo mp*

[43] Expressively (♩ = ca. 76-80)

*rit. mf mp*

44 all the earth, no sun had shown for days. His

*end solo mp mp*

47

bod - y placed in a lone - ly tomb, the third day to be

50

raised. But, as *rubato* night turned to day, *Slowly*

But, as night turned to day, the *Slowly*

*rubato* *opt. a cappella*

53

*cresc.* *rit.* **55** Tempo I (♩ = ca. 116)

stone was rolled a - way.

*cresc.*

*cresc.* *rit.* **55** Tempo I (♩ = ca. 116)  
+ Tpt.

*mf* *cresc. poco a poco*



56

Musical notation for measures 56-58, showing empty staves for vocal and piano parts.

D.S. al Coda  
(p. 4, m. 16)

Musical notation for measures 59-61, showing piano accompaniment.

59

*Coda*

Musical notation for measures 59-61 with vocal line and lyrics. Dynamics include *ff*.

Al - le - lu, al - le - lu, al - le - lu, al - le - lu - ia, for

59

*Coda*

Musical notation for measures 59-61, showing piano accompaniment.

61

Musical notation for measures 61-62 with vocal line and lyrics. Dynamics include *ff*.

Christ is ris - en to - day.

Musical notation for measures 61-62, showing piano accompaniment.

# CHRISTUS RESURREXIT

11

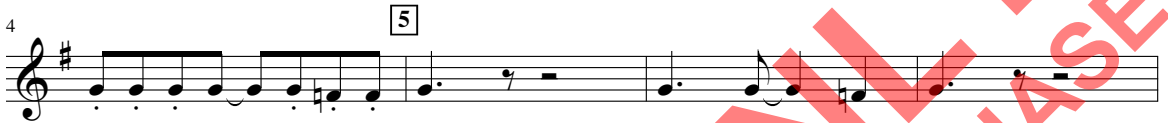
(Christ Is Risen)

Words by  
SALLY K. ALBRECHT

Music by  
JAY ALTHOUSE

B $\flat$  TRUMPET

Brightly ( $\text{♩} = \text{ca. } 116$ )



© Copyright 2024 CandelaWorks Music (ASCAP), a division of Jubilate Music Group, LLC.  
P.O. Box 3607, Brentwood, TN 37024.  
All Rights Reserved. Printed in USA.

The copying of this music is prohibited by law and is not covered by CCLI or OneLicense.net

JMG1298

