

Concertato on CROWN HIM WITH MANY CROWNS

for SATB choir and optional congregation, with organ, optional trumpets (2) and timpani*

Text by
MATTHEW BRIDGES (1851)

Hymntune: DIADEMATA (George Job Elvey, 1868)
Setting by HAL H. HOPSON (ASCAP)

With broad majesty (♩ = ca. 56)
INTRODUCTION

TRUMPETS
(optional)

ORGAN

TIMPANI
(optional)

The introduction consists of three staves. The top staff is for Trumpets (optional), the middle for Organ, and the bottom for Timpani (optional). The organ part includes a 'Ped.' (pedal) marking. Dynamics include 'f' (forte) and 'ff' (fortissimo).

This section continues the organ and timpani parts from the introduction. The organ part continues with a melodic line in the right hand and a bass line in the left hand. The timpani part has a few notes.

*Parts for 2 Trumpets (B, or C) and Timpani: Orchestration CD-ROM(JMG1123)

** In the absence of trumpets, organist should play cued notes

10

18 STANZA 1: Choir and Congregation

f *a tempo*

1. Crown him with man - y crowns, the Lamb up - on his throne. Hark!

(f) *a tempo*

(f) *a tempo*

a tempo *(f)*

how the heav'n-ly an - them_ drowns all mu - sic but its own. A -

26

wake, my soul, and sing of him who died for thee, and

This system contains the first two lines of the musical score. The top line is the vocal melody in treble clef with lyrics underneath. The second line is the piano accompaniment in treble clef. The third and fourth lines are the piano accompaniment in bass clef. The key signature has two sharps (F# and C#).

hail him as thy match-less King through all e - ter - ni - ty.

rit.

rit.

rit.

rit.

This system contains the second two lines of the musical score. The top line is the vocal melody in treble clef with lyrics underneath. The second line is the piano accompaniment in treble clef. The third and fourth lines are the piano accompaniment in bass clef. The key signature has two sharps (F# and C#). The word 'rit.' (ritardando) is written above the vocal line and below the piano accompaniment lines at various points.

34 STANZA 2: Choir and Congregation

mf a tempo

2. Crown him the Lord of love; be - hold his hands and side, rich

mf a tempo

Man.

wounds, yet vis - i - ble a - bove, in beau - ty glo - ri - fied. No

42

an - gels in the sky can ful - ly bear that sight, but

rit.

down - ward bend their burn - ing eyes at mys - ter - ies so bright.

rit.

50 STANZA 3: Choir only

SOPRANO

a tempo

54

p

3. Crown him the Lord of

ALTO

p

Peace to you. Peace to you. Peace to

TENOR

p

BASS

a tempo

p

Ped.

peace, whose pow'r a scepter sways from pole to pole, that

you. Peace to you. Peace to

wars may cease, ab - sorbed in prayer and praise.

you. Peace to you. Peace to

This system contains the first three staves of music. The top staff is a vocal line in treble clef with lyrics. The middle staff is another vocal line in treble clef with lyrics. The bottom staff is a piano accompaniment in bass clef. The key signature has two sharps (F# and C#). The music consists of several measures with various note values and rests.

His reign shall know no end, and round his pierc - ed

you. Peace to you. Peace to

This system contains the next three staves of music. The top staff is a vocal line in treble clef with lyrics. The middle staff is another vocal line in treble clef with lyrics. The bottom staff is a piano accompaniment in bass clef. A red box with the number '64' is placed above the first measure of the top staff. The key signature has two sharps (F# and C#). The music continues with similar notation to the first system.

feet fair flow'rs of par - a - dise — ex - tend their fra - grance

you. Peace to you. Peace to

This system contains the first three staves of music. The top staff is the vocal line, the middle staff is the vocal line, and the bottom staff is the piano accompaniment. The music is in G major and 4/4 time. The lyrics are: "feet fair flow'rs of par - a - dise — ex - tend their fra - grance" on the first line, and "you. Peace to you. Peace to" on the second line.

72 *pp* *rit.*

ev - er sweet.

you. Peace to you. *pp*

(B. div.)

rit. *pp*

This system contains the next three staves of music. The top staff is the vocal line, the middle staff is the vocal line, and the bottom staff is the piano accompaniment. The music is in G major and 4/4 time. The lyrics are: "ev - er sweet." on the first line, "you. Peace to you. *pp*" on the second line, and "(B. div.)" on the third line. The system ends with a double bar line and a repeat sign. The piano accompaniment includes markings for *pp*, *rit.*, and *pp*.

10 INTERLUDE
a tempo
(TRUMPETS)

76

Musical staff for Trumpets, starting at measure 76. The staff contains a melodic line with a dynamic marking of *f* and a *v* (accents) marking. The key signature is one sharp (F#) and the time signature is 4/4.

(ORGAN)

Musical staff for Organ, starting at measure 76. The staff contains a melodic line with a dynamic marking of *f* and a *v* (accents) marking. The key signature is one sharp (F#) and the time signature is 4/4.

(TIMPANI)

Musical staff for Timpani, starting at measure 76. The staff contains a rhythmic line with a dynamic marking of *f* and a *v* (accents) marking. The key signature is one sharp (F#) and the time signature is 4/4.

80

Musical staff for Trumpets, measures 80-84. The staff contains a melodic line with a *rit.* (ritardando) marking. The key signature is one sharp (F#) and the time signature is 4/4.

Musical staff for Organ, measures 80-84. The staff contains a melodic line with a *rit.* (ritardando) marking. The key signature is one sharp (F#) and the time signature is 4/4.

Musical staff for Timpani, measures 80-84. The staff contains a rhythmic line with a *rit.* (ritardando) marking. The key signature is one sharp (F#) and the time signature is 4/4.

Broadly

ff DESCANT (selected voices)

4. Crown him, crown him, crown him, crown him,

ff MELODY

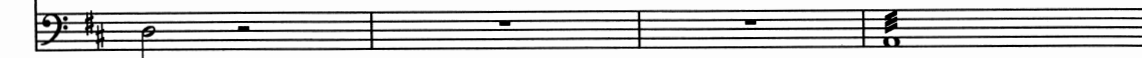
4. Crown him the Lord of years, the po-ten-tate of time, Cre -



crown him, crown him, crown him Lord of peace and love.



a-tor of the roll-ing spheres, in - ef - fa - bly sub - lime. All



92

Al - le - lu - ia, Al - le - lu - ia,
 hail, Re-deem-er, hail! For thou hast died for me; thy

This system contains the first two vocal staves and the piano accompaniment. The piano part consists of a grand staff with treble and bass clefs. The vocal staves are in a soprano and alto register. The music is in a key with one sharp (F#) and a 4/4 time signature.

Al - le - lu - ia, Al - le - lu - ia.
 praise shall nev - er, nev - er fail through-out e - ter - ni - ty.

(div.) rit.

rit.

rit.

rit.

This system continues the vocal and piano parts. It includes dynamic markings such as *(div.)*, *rit.*, and *rit.*. The piano part features a grand staff with treble and bass clefs. The vocal staves are in a soprano and alto register. The music is in a key with one sharp (F#) and a 4/4 time signature.