

A FRENCH CAROL CONCERTATO

for S.A.T.B. voices, with opt. 4 Handbells, accompanied*

Arranged by
HAL H. HOPSON

Tune: GLORIA
French Carol, 18th c.

As a joyful dance (♩ = ca. 116)
(- H.B.)

ORGAN

mf

Man. Ped.

4

SOPRANO / ALTO

mf

TENOR / BASS

mf

5

An - gels we have heard on high sweet - ly sing - ing

8

o'er the plains, and the moun - tains in re - ply

mf

Man.

* Part for Handbells is on pages 11-12.

To purchase a full-length performance recording (JMG1022) of this piece, go to jubilatemusic.com/downloads.
Also available: FlexTrax Accompaniment CD Vol 12 (JMG1048)

© Copyright 2020 CandelaWorks Music (ASCAP), a division of Jubilate Music Group, LLC.
P.O. Box 3607, Brentwood, TN 37024.
All Rights Reserved. Printed in USA.

The copying of this music is prohibited by law and is not covered by CCLI, LicenSing, or OneLicense.net

13

f

Glo -

f

Glo -

13 (+H.B.)

f

Ped.

ri - a in ex - cel - sis

ri - a in ex - cel - sis

De - o! Glo -

De - o! Glo -

- ri - a in ex - cel - sis De - o!
 in ex - cel - sis, in ex - cel - sis De - o!

- ri - a in ex - cel - sis De - o!

Piano accompaniment for the first system.

26

mf

Shep - herds, why this ju - bi - lee? Why your joy - ous strains pro - long?

26

(- H.B.)

mf

Piano accompaniment for the second system.

30

f

What the glad - some tid - ings be, which in - spire your heav'n - ly song?

Piano accompaniment for the third system.

34

Glo - - - ri - a

T.B. *f*

34 Glo (+H.B.)

ri - a

f

38

in ex - cel - sis De - o! Glo -

in ex - cel - sis De - o! Glo -

42

ri - a in ex - cel - sis De - o!
in ex - cel - sis, in ex-cel-sis De - o!

ri - a in ex - cel - sis De - o!

47 T.B.
pp

Come to Beth - le - hem and see Christ whose birth the an - gels sing;

(- H.B.)

Christ the Lord, the new - born King.

51

come, a - dore on bend - ed knee, Christ, the new - born King.

(+ H.B.)

55 S.A.
mf

Glo - ri - a

mf

Glo - ri - a

55

59 *f*

in ex - cel - sis De - o! Glo

in ex - cel - sis De - o! Glo

63

ri - a in ex - cel - sis De - o!
in ex - cel - sis, in ex-cel-sis De - o!

ri - a in ex - cel - sis De - o!

68

(- H.B.)

mf

Man.

Ped.

72

f DESCANT

Glo - ri - a, glo - ri - a, glo - ri - a, glo - ri - a,

mf

*4. See Him in a man - ger laid, whom the choirs of an - gels praise;

72

mf

76

glo - ri - a, glo - ri - a, glo - ri - a.

Ma - ry, Jo - seph, lend your aid, while our hearts in love we raise.

80

ff

Al - le - lu - ia. Al - le -

f
Glo -

Glo
(+ H.B.)

80

f

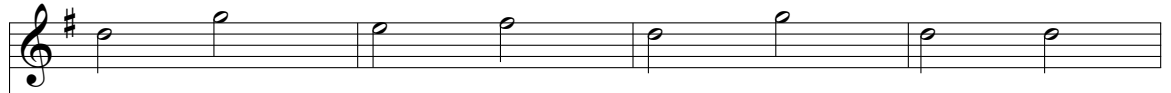
83

lu - ia. Al - le - lu - ia.

- ri - a in ex - cel - sis De - o!

ri - a in ex - cel - sis De - o!

86



Al - le - lu - ia. Al - le - lu - ia.



Glo - - - ri - a



Glo - - - ri - a

86

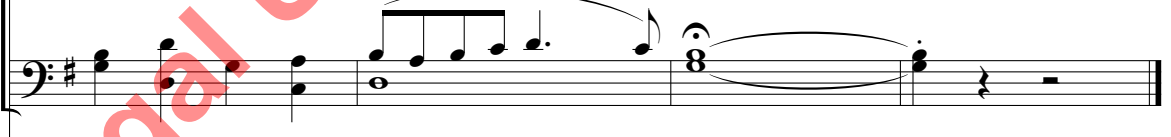
90



Al - le - lu - ia. Al - le - lu - ia.



in ex - cel - sis De - o!

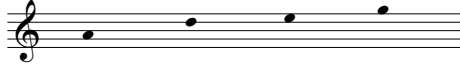


in ex - cel - sis De - o!

A FRENCH CAROL CONCERTATO

HANDBELLS

Handbells used: 4



Arranged by
HAL H. HOPSON

Tune: **GLORIA**
French Carol, 18th c.

4 5 8 13 14

1-4 5-12 *f*

15 16 17 18

19 20 21 22

23 24 25 26 8 34

26-33 *f*

35 36 37 38

39 40 41 42

43 44 45 46 47 4

47-50

© Copyright 2020 CandelaWorks Music (ASCAP), a division of Jubilate Music Group, LLC.
P.O. Box 3607, Brentwood, TN 37024.
All Rights Reserved. Printed in USA.

The publisher hereby grants non-transferable permission to reprint this instrumental part for rehearsal and performance.
The music must be reproduced with the title and all credits including the copyright notice.

51 52 53 54

pp

55 56 57 58

mf

59 60 61 62

63 64 65 66 67

f

68 80 81

f

82 83 84 Sk 85 Sk

Sk

86 87 88 89

ff

90 Sk 91 Sk 92 Sk 93

rit.