

# OPEN MY HEART, O GOD OF GRACE

for SATB voices, accompanied,  
with optional flute (C-instrument)\*

Words and Music by  
BECKI SLAGLE MAYO (ASCAP)

Performance time: approx. 1:50

**Prayerfully** (♩ = ca. 104)

SOPRANO  
ALTO

TENOR  
BASS

FLUTE or  
C-Instrument  
(optional)

*mf*

ACCOMP.

*mf*

**5** *mf* (unison)

O - pen my eyes to see your truth, O - pen my ears to

*mf* (unison)

**5**

**5**

\*Part for Flute (C-instrument) may be found on page 8.

13

hear your word. O - pen my lips to sing your

This system contains the first two staves of music. The top staff is a vocal line in treble clef, and the bottom staff is a piano accompaniment in bass clef. A box with the number '13' is positioned above the vocal line. The lyrics 'hear your word. O - pen my lips to sing your' are written below the vocal line.

13

13

This system contains the next two staves of music. The top staff is a vocal line in treble clef, and the bottom staff is a piano accompaniment in bass clef. A box with the number '13' is positioned above the vocal line. The lyrics 'hear your word. O - pen my lips to sing your' continue from the previous system.

13

praise, O - pen my heart to your grace.

This system contains the final two staves of music. The top staff is a vocal line in treble clef, and the bottom staff is a piano accompaniment in bass clef. A box with the number '13' is positioned above the vocal line. The lyrics 'praise, O - pen my heart to your grace.' are written below the vocal line. The system concludes with a double bar line and a key signature change to two flats.

21 *(unis.) mf*

O - pen my hands\_ to share,

*(unis.) mf*

O - pen my hands to free - ly share, O - pen my

21 *mf*

21 *mf*

29

O - pen my arms to care. O - pen my eyes\_ to

arms to reach out and care.

29

29

see\_\_ your face, O - pen my heart to your grace.

This system contains the first two staves of the musical score. The top staff is the vocal line in treble clef, and the bottom staff is the piano accompaniment in bass clef. The key signature has two flats (B-flat and E-flat), and the time signature is 4/4. The lyrics are written below the vocal line.

39 *mp* Si - lent - ly now I wait, O

This system contains the third and fourth staves. The vocal line continues in the top staff, and the piano accompaniment continues in the bottom staff. A measure rest is present at the beginning of the vocal line. The dynamic marking *mp* is placed above the vocal line.

39 *mp* (optional a cappella)

This system contains the fifth and sixth staves. The piano accompaniment continues in both staves. A measure rest is present at the beginning of the top staff. The dynamic marking *mp* is placed below the top staff, and the text "(optional a cappella)" is written below the piano part.

voice. \_\_\_\_\_

God, read - y to hear your voice, your voice.



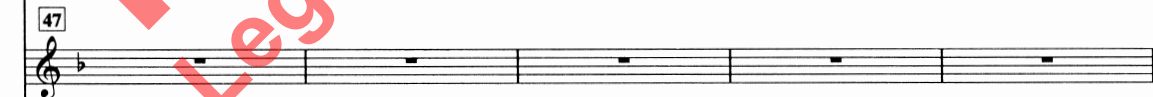
47

O - pen my heart in this qui - et place, O - pen my

*mf*



47



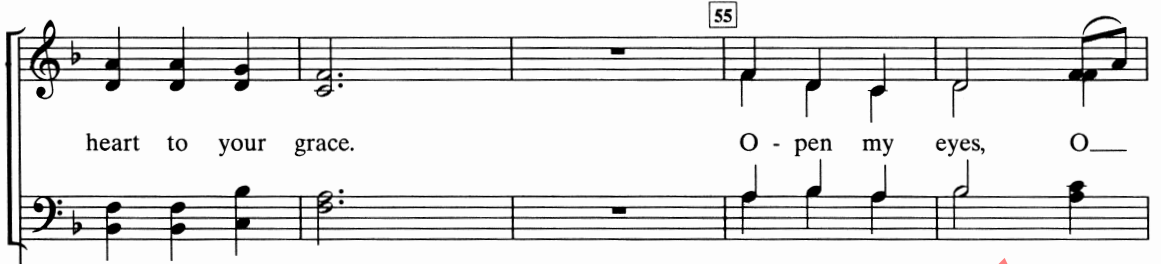
47

*mf*



55

heart to your grace. O - pen my eyes, O



55

*mf*



rit. *mp* *p*

Lord of my heart, Lord of my heart.

*mp* *p*



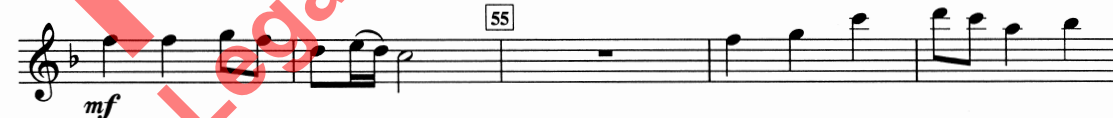
rit. *mp* *p*





FLUTE or C-INSTRUMENT (optional)

Prayerfully (♩ = ca. 104)



Printed in USA

# Jubilate

MUSIC GROUP

Alfred Sacred • Jubilate Music • H.W. Gray



\$1.50  
in USA

BSCM04040