

ALL EARTH REJOICE WITH A GLADSOME VOICE

(with texts for General occasions, Christmas,
Easter, Ascension, Christ the King Sunday or Pentecost)

for SATB voices with keyboard accompaniment

Text by H.H.H.

Canon by ANTONIO VIVALDI (1678-1741)

Arranged by HAL H. HOPSON

With exuberant joy (♩ = ca. 84)

ACCOMP. *mf*

SOPRANO *mf (Canon)* [6] All the earth re -

ALTO

TENOR

BASS

joice with a glad-some voice; now sing we al - le - lu - ia.

simile

14

Praise the Lord. Re - joice, re - joice and sing.

(unison) *mf*

All

earth re - joice with a glad - some voice; sing al - le -

lu - ia. Praise the Lord, O praise the Lord. Re - joice, re -

22 *f*

All earth re -

f

joyce and sing. All the earth re - joyce with a glad - some

joyce with a glad - some voice; sing al - le - lu ia, al - le -

voice; now sing we al - le lu - ia.

lu ia. O praise the Lord. Re - joyce and sing.

Praise the Lord. Re - joyce, re - joyce and sing.

Preview Only
 Legal Use Requires Purchase

31 (div.) *mf*

Musical staff with treble clef, key signature of one sharp (F#), and common time signature. The staff contains a series of chords and a melodic line.

(General) Sing al - le - lu - ia, sing, O praise the Lord.
(Christmas) Sing al - le - lu - ia, sing, for Christ is born.
(Easter) Sing al - le - lu - ia, sing, for Christ is ris'n.
(Ascension or Christ the King) Sing al - le - lu - ia, sing, Christ reigns on high.
(Pentecost) Sing al - le - lu - ia, sing, the Spir - it comes.

(div.) *mf*

Musical staff with bass clef, key signature of one sharp (F#), and common time signature. The staff contains a series of chords.

Piano accompaniment musical staff with grand staff (treble and bass clefs), key signature of one sharp (F#), and common time signature. The staff contains chords and a melodic line. The dynamic marking *mf* is present.

Sound the tra - pet; sound the harp. Praise the Lord.

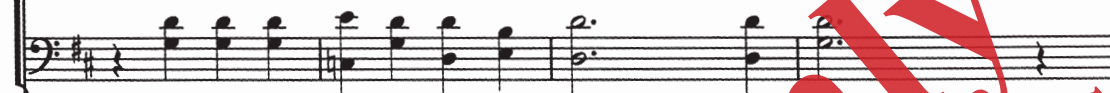
Musical staff with bass clef, key signature of one sharp (F#), and common time signature. The staff contains a series of chords.

Piano accompaniment musical staff with grand staff (treble and bass clefs), key signature of one sharp (F#), and common time signature. The staff contains chords and a melodic line.

39



Sing al - le - lu - ia, sing, O praise_____ the Lord.
 Sing al - le - lu - ia, sing, for Christ_____ is born.
 Sing al - le - lu - ia, sing, for Christ_____ is ris'n.
 Sing al - le - lu - ia, sing, Christ reigns_____ on high.
 Sing al - le - lu - ia, sing, the Spir - it comes.



Sound the trum - pet; sound the harp. Praise the Lord_____



47 *a tempo* *mf* (unison)

All earth re - joice with a glad-some voice; sing al - le -

a tempo
(mf)

lu - ia. Praise the Lord, O praise the Lord. Re - joice, re -

55

joice and sing. All the earth re - joice with a glad - some

(unison) *mf*

All earth re -

voice; now sing we al - le - lu - ia.

joice with a glad - some voice; sing al - le - lu - ia, al - le -

Praise the Lord. Re - joice re - joice and

lu - ia. O praise the Lord. Re joice and

63 (S.) *f* sing. All earth re - joice with a glad - some

(A.) *f* sing. All the earth re - joice with a glad - some voice; now sing we

(T.,B.) *f* sing. All earth re - joice with a glad - some

f

voice; sing al - le - lu - ia, al - le - lu - ia. O
al - le - lu - ia. Praise the
voice; sing al - le - lu - ia. Praise the Lord, O praise the

praise the Lord. Re - joice and sing.
Lord. Re - joice, re - joice and sing.
Lord. Re - joice, re - joice and sing.

rit. *a tempo*

rit.