

Advent Candlelight Carol is a charming adaptation of the *Burgundian Carol* (commonly known as *Patapan*) that also incorporates the opening motive of *Let All Mortal Flesh Keep Silence*. Arranged in a flexible edition for unison or 2-part voices, it may be performed by singers of all ages, both treble and mixed voices. Featuring optional percussion (hand drum and triangle) and congregational singing, it is especially appropriate for Advent processions or candlelighting ceremonies.

When used in conjunction with weekly candlelighting ceremonies, this anthem may be performed verse by verse, adding a verse with each subsequent week. It may also be performed without ceremony as a regular Advent anthem.

Unison voices should sing Part II throughout. Part I may be played by a flute one octave higher than written. Following are suggested assignments for performance by 2-part voices:

Treble Voices

Part I - Sopranos

Part II - Altos

Mixed Voices

Part I - Descant (a few voices)

Part II - Unison Voices

Part I - Women

Part II - Men

Suggested corresponding scripture readings include Isaiah 9: 2-7 & 40: 1-5, Matthew 4: 12-17 and Luke 1: 67-79. One basic homiletical theme is preparing for the coming of the Messiah, who is the Light of Salvation.

Anna Laura Page is Handbell Editor for Alfred Publishing Company. She received her B.M.E. in vocal music education and M.M. in music theory from the University of Kentucky. Active as a composer, clinician and organ recitalist, she has served on the Music Committee of the Southern Baptist Hymnal Committee and has received the ASCAP Standards Award annually for the past several years. Ms. Page currently resides in Sherman, Texas, where her husband, Oscar, is president of Austin College.

Jean Anne Shafferman is Director of Church Choral Publications for Alfred Publishing Company. A graduate of the University of Kentucky with a B.M.E. in vocal music education and an M.M. in music theory, she is active as a church musician, clinician, and composer and has served as the Eastern Division Music in Worship Chairperson for the American Choral Directors' Association.

ADVENT CANDLELIGHT CAROL

for unison or 2-part voices, accompanied,
with opt. congregation, hand drum and triangle*

BURGUNDIAN CAROL

Arranged with new words by ANNA LAURA PAGE
and JEAN ANNE SHAFFERMAN

With excitement (♩ = ca. 132-138)

PART I

PART II
(opt. UNISON VOICES)

With excitement (♩ = ca. 132-138)

ACCOMP.
mf

HAND DRUM
(optional)
mf

4

5 *mp* (2nd time only)

2. Can - dle bright with

mf

1. Ad - vent can - dle burn - ing bright through the night, shine your

(tacet)

* Unison voices should perform Part II throughout.

Parts for percussion (hand drum and triangle) and congregation may be found on pages 11 & 12, respectively.

Copyright © 2000 Jubilate Music Group, LLC.
All Rights Reserved. Print In USA,

THE CCLI LICENSE DOES NOT GRANT PERMISSION TO PHOTOCOPY THIS MUSIC.

7

light of peace; peo - ple ev - 'ry -

light of (1.) hope tell - ing peo - ple ev - 'ry -
(2.) peace

10

where, - go - tell: the Sav - ior comes!

where: soon the Sav - ior comes, soon He will be here! Peo - ple

13 *mf*

Come and pre - pare with the light of

gath - er and pre - pare in the night with the light of

16

1.

Musical staff for the first vocal line, measures 16-19, first ending. The staff is in G major (one flat) and contains whole rests for all four measures.

1.

mf

Musical staff for the second vocal line, measures 16-19, first ending. The staff is in G major (one flat) and contains whole rests for measures 16-18, followed by a half note G4 in measure 19. The dynamic marking *mf* is present.

hope.

2. Ad - vent

1.

Piano accompaniment for measures 16-19, first ending. The right hand features a melodic line with eighth and quarter notes, while the left hand provides a harmonic accompaniment with chords and single notes.

HAND DRUM

mf

Hand drum part for measures 16-19, first ending. The notation uses 'x' for drum hits and rests for the drum. The dynamic marking *mf* is present.

20

2.

Musical staff for the first vocal line, measures 20-23, second ending. The staff is in G major (one flat) and contains whole rests for all four measures.

peace.

2.

mf

Musical staff for the second vocal line, measures 20-23, second ending. The staff is in G major (one flat) and contains whole rests for measures 20-22, followed by a half note G4 in measure 23. The dynamic marking *mf* is present.

peace.

3. Ad - vent

2.

Piano accompaniment for measures 20-23, second ending. The right hand features a melodic line with eighth and quarter notes, while the left hand provides a harmonic accompaniment with chords and single notes.

HAND DRUM

Hand drum part for measures 20-23, second ending. The notation uses 'x' for drum hits and rests for the drum. There are horizontal lines below the staff in measures 22 and 23.

24

mp

3. Can - dle burn - ing bright through the night,

can - dle burn - ing bright through the night, shine your light of

mf

TRIANGLE

mf

27

light of love; peo - ple ev - 'ry - where, go tell:

love tell - ing peo - ple ev - 'ry - where: soon the Sav-ior

30

mf

He comes in love! Come and pre - pare in the

comes, soon He will be here! Peo-ple gath - er and pre - pare in the night with the

34

35

night with the light of love.

light of love.

HAND DRUM

mf

38

38

mp

mp

43

42

mp

4. Can - dle bright with

mf

4. Ad - vent can - dle burn - ing bright through the night, shine your

mf

TRIANGLE

mf

(mf)

45

light of joy; peo - ple ev - 'ry -

light of joy tell - ing peo - ple ev - 'ry -

48

where, go - tell: the Sav - ior comes!

where: soon the Sav-ior comes, soon He will be here! Peo - ple

HAND DRUM

mf

51 *mf* *cresc.*

Come and pre - pare with the light,

cresc.

gath - er and pre - pare in the night with the light,

cresc.

cresc.

54 *f* *poco rit.*

light of joy!

f

light of joy!

f *poco rit.*

f *poco rit.*

ADVENT CANDLELIGHT CAROL

PERCUSSION
(Hand Drum & Triangle)

BURGUNDIAN CAROL
Arranged with new words by ANNA LAURA PAGE
and JEAN ANNE SHAFFERMAN

With excitement (♩ = ca. 132-138)

HAND DRUM
mf

5 **11** **16** 1.

20 2.

24 **TRIANGLE**
mf

25

31 **35** **HAND DRUM**
mf

37 *mp* *mf*

43 **TRIANGLE**
(mf)

49 **HAND DRUM**
mf *cresc.*

54 *f* *poco rit.*

Copyright © 2000 Jubilate Music Group, LLC.
All Rights Reserved. Print In USA,

THE CCLI LICENSE DOES NOT GRANT PERMISSION TO PHOTOCOPY THIS MUSIC.

ADVENT CANDLELIGHT CAROL

for congregation

BURGUNDIAN CAROL

*Arranged with new words by ANNA LAURA PAGE
and JEAN ANNE SHAFFERMAN*

Verses 1, 2 & 3:
Choir & Congregation



Ad-vent can-dle burn-ing bright through the night, shine your light of



(1.) hope tell - ing peo - ple ev - 'ry - where: soon the Sav-ior comes, soon He will be
(2.) peace
(3.) love



here! Peo-ple gath-er and pre - pare in the night with the light of (1.) hope.
(2.) peace.
(3.) love.

Verse 4:
Choir & Congregation



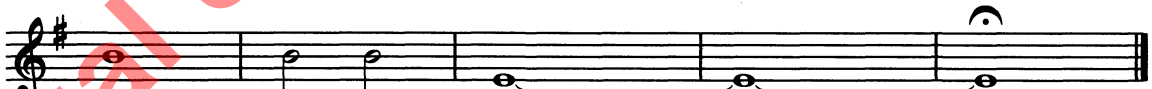
Ad - vent can - dle burn - ing bright through the night, shine your



light of joy tell - ing peo - ple ev - 'ry - where: soon the Sav-ior



comes, soon He will be here! Peo-ple gath-er and pre - pare in the night with the



light, light of joy!

The publisher hereby grants permission to reprint only this page for the purpose of performance with the congregation provided that a sufficient quantity of copies is purchased for the choir.

Copyright © 2000 Jubilate Music Group, LLC.
All Rights Reserved. Print In USA,

THE CCLI LICENSE DOES NOT GRANT PERMISSION TO PHOTOCOPY THIS MUSIC.