



Little Martin's Electric Double Breast Pump

User Manual

For Model BBP1705

In order to ensure you and your child's safety, please be sure to read this manual before using this product, and use it correctly.

- Please keep this manual in a safe place.
- When assembling parts, please be sure to carefully read this manual before doing so.
- Read and follow instructions on product cleaning, and pay attention to the directions on milk storage and thawing.
- When giving this away as a gift, please be sure to include this manual.

Contents

Before Using.....1

Cleaning2

Battery Use and Replacement.....3

Name of Parts4

The Motor Unit5

Preparing for Pumping5

Tips7

Operating Instructions.....7

Expressing8

Breast Milk Storage and Heating9

Recycling9

FAQ10

Specifications10

Warranty Certificateon the back cover

Before Using

- This product is designed to be a personal item and is only intended for repeated use by one user to avoid bacterial or virus infection.
- Keep out of reach of children.

- Carefully read through the warnings, safety tips, and operating instructions to ensure safe and correct use of the product. Incorrect use could lead to injury or the product getting damaged. Always unplug from the power socket immediately after use.

- Do not use the breast pump while bathing.
- Do not reach for the product if it has fallen into water. Unplug from power socket immediately.
- Only use the power adapter supplied.
- Make sure breast pump, including power adapter, is not exposed to extreme heat or placed in direct sunlight.
- Do not attempt to open, service, or repair the breast pump yourself.
- Never use while pregnant as pumping can induce labor.
- Never use when sleepy or drowsy.
- If expressing becomes painful, stop and consult your breastfeeding advisor or healthcare professional.
- Never drop or insert any foreign object into any opening or into the silicone tube.
- Do not use the breast pump if the silicone diaphragm appears to be damaged or broken.
- Do not use feeding teats as dummies, pacifiers, or soothers.
- Do not continue pumping for more than 5 minutes at a time if no result is achieved.

Cleaning

Before using for the first time, and after every use:

- STEP 1.** Disassemble the pump set into individual parts.
- STEP 2.** Rinse all parts with cold, clean water.
- STEP 3.** Clean all parts with warm, soapy water.
- STEP 4.** Rinse all parts with cold, clean water for 10 to 15 seconds.
- STEP 5.** Dry with a clean cloth or leave to air dry on a clean cloth.

As an alternative to steps 2 to 4, wash individual parts in the top rack or cutlery section of a dishwasher.

Before using for the first time, and as daily maintenance in addition to steps 1 to 5, sterilize the pump set by covering all parts with water and boil for 5 minutes. To clean the monitor unit, wipe off with a clean, damp cloth.

Attention

- Take apart and wash all parts that come in contact with breast and breastmilk immediately after use to avoid dry up of milk residue and to prevent growth of bacteria.
- Be careful when removing and cleaning the valve as it is prone to breakage when handled roughly. To clean the valve, rub gently with fingers in warm water.
- Do not insert any object into the valve which may cause damage.

Battery Use and Replacement

When the screen displays the full battery gauge and the battery indicator stops flashing, the battery is charged completely.

Battery Indicators:

	Plugged in
	Charged 100%
	Full battery (3 hours)
	Low battery (20 mins)
	No power

Attention

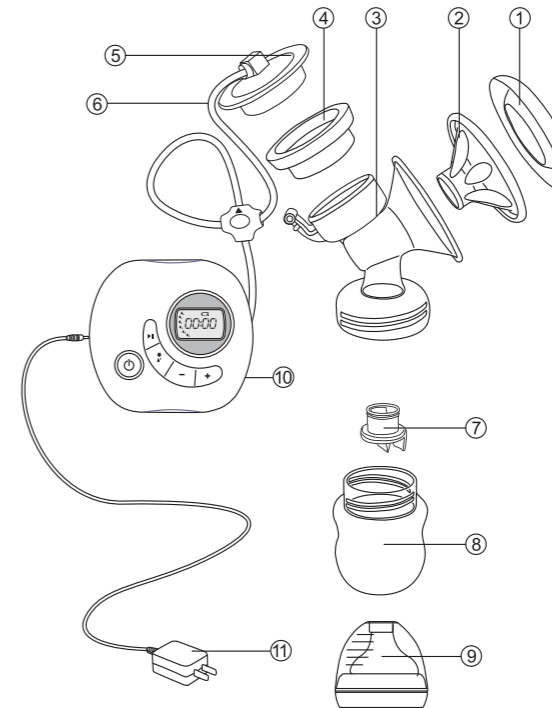
Avoid charging the battery for longer than 24 hours to prevent damage.

Battery Replacing:

1. Open the battery compartment cover in the direction indicated by the arrow.
2. Pull the band and take out the battery.
3. Insert the replaceable battery.

Name of Parts

- ① Breastshield Cap
- ② Massage Cushion
- ③ Pump Body
- ④ Silicone Diaphragm
- ⑤ Pump Cover
- ⑥ Tubing
- ⑦ Silicone Valves
- ⑧ Breastmilk Bottle
- ⑨ Feeding Nipple
- ⑩ Main Unit
- ⑪ Power Adapter



Warranty Certificate

This certificate promises our customers that they will receive free repair. If you notice any problems listed below within the warranty period, please contact our customer service with this certificate.

1. Once you have used this product, we basically will not offer exchange.
2. When the product is damaged (after proper use) within the warranty period which is a year from the purchase date, we will repair it for free. Contact us via email support@littlemartinsdrawer.com, and send the product over to our customer center.
3. Even within the warranty period, in the following situation the repair process will come with a free.
 - a. Natural discoloration of the plastic area.
 - b. Damage due to misuse of the product.
 - c. Damage due to fire, water, earthquake and other natural disasters.
 - d. Damage due to commercial or business usage.
 - e. The shipping fee for paid repair.
4. This service will apply only inside United States.
5. Once the product is out of production and certain parts are out of stock, we will not be able to offer certain repairs.

LOT BATCH CODE
SEE THE LOT NUMBER ON THE BACK OF THE MOTOR UNIT

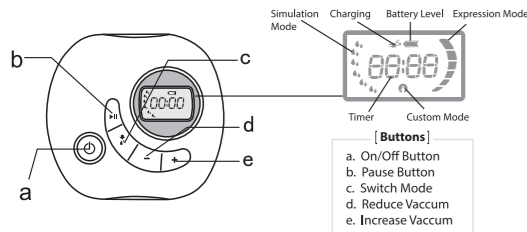
i CONSULT INSTRUCTIONS FOR USE

100% RECYCLABLE

WASTE FROM ELECTRICAL AND ELECTRONIC EQUIPMENT (WEEE)



The Motor Unit



Preparing for Pumping

Warning

1. Use accessories supplied by Little Martin's Drawer only.
2. Be sure the voltage of the AC adapter is compatible with the power source.
3. Check pump set components for wear or damage before use and replace if necessary.
4. All components must be completely dry before use.
5. Wash your hands thoroughly (at least one minute) with soap and water before touching the breast and cleaned pump parts.

Before using for the first time, make sure you have cleaned and sterilized all parts of the breast pump.

Please carefully read the assembling instruction and assemble the pump set correctly. Otherwise a good vacuum may not be achieved.



Step 1.
Carefully insert the silicone valve onto the pump body and push it until it engages.

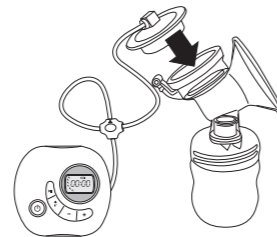


Step 2.
Screw bottle into the pump body and make sure it is completely fixed.

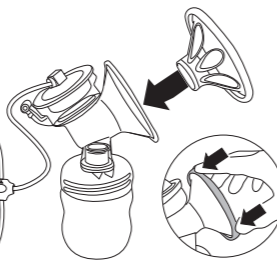
5



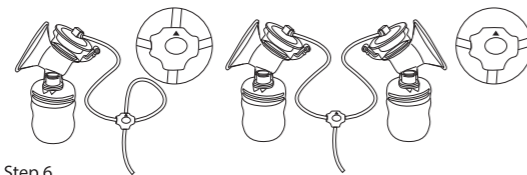
Step 3.
Place silicone diaphragm into pump body from above, making sure it fits securely around the rim by pressing down with your fingers to ensure a perfect seal.



Step 4.
Insert adapter into power socket and insert other end into motor unit.



Step 5.
Place the massage cushion into the funnel-shaped section of the pump body. Push in the inner part of the massage cushion as far as possible and ensure it is perfectly sealed all around the rim of the pump body. Press to remove any trapped air. Insert the power adapter into the pump body.



Step 6.
If you only want to connect to one bottle, just insert the other end of the tubing to the point illustrated in the picture. To use two bottles, connect the tubing to the other bottle as the picture shows.

6

Tips

You can begin to use the breast pump after cleaning and assembling. It is recommended (except advised otherwise by your doctor or breastfeeding advisor) to wait until your milk supply and breastfeeding schedule are established (normally at least 2 to 4 weeks after giving birth).

Exceptions

- If you are expressing milk for your baby to be given in hospital.
- If your breasts are engorged (painful or swollen), you can express a small amount of milk before or between feeds to ease the pain and to help your baby latch on more easily.
- If you have sore or cracked nipples, you may wish to express your milk until they are healed.
- If you are separated from your baby and wish to continue to breastfeed when you are reunited, you should express your milk regularly to stimulate your milk supply.

Choose the best time of the day for you to express milk, e.g. in the morning when milk supply is high, after a feeding session if your baby does not drink up all the milk from the breast, or when resting during work time. It is best to choose a time when you are not in a rush or being interrupted.

Practice several times to use correctly and familiarize yourself with the breast pump. A picture of your baby can help encourage the "let-down" reflex. A warm environment may also help.

If expressing becomes painful, stop and consult your breastfeeding advisor or healthcare professional.

Operating Instructions

- ⏻ Press the On/Off Key (displays screen lights)
- ⏸ Press the mode switching key (switch between pumping/massaging modes)
- 🔊 Massaging mode (yellow screen, 6 gears)
- 🔊 Pumping mode (half white screen and half blue screen, 12 gears)

7

When pressing the key ⊕ or ⊖, the current gear will be shown on the display screen.

To reset your mode, press ⊕ and ⊖ at the same time, the breast pump will suspend. 🔄 icon will flash, and memory mode will begin. Use the key ⊕ up to adjust to the required level of suction. Release the key ⊕ to deflate. While deflating, breast milk flows from duckbill valve to feeder. Press the key ⊕ again to finish deflation. The pumping will commence according to the mode previously selected.

To cancel the selected mode, press ⊕ and ⊖ at the same time. 🔄 icon will flash, and memory mode will begin. Press the key ⊖ to cancel selected mode.

- The default working time of this breast pump is 30 minutes, after then it will automatically power off (Your preferred expression mode will be memorized before powering off).
- Milk expressed into the bottle cannot be too full and exceed the duckbill valve.

Expressing

Warning

- Only fill the bottle to the 150ml mark.
- Do not kink the tubing during expression.
- Do not hold the pump set by the bottle. This can lead to blockage of the milk ducts and engorgement.
- Always disconnect the breast pump from the power source after expression.

Warning

- Little Martin's breast pump switches off automatically if it has been running for 30 minutes with no manipulations.
- Little Martin's breast pump can memorize your customized setting before it switches off.

8

Breast Milk Storage and Heating

Breast Milk Storage

After completing the suction of breast milk, fasten the storage cap, or seal the bag, and immediately place into fridge or freezer. Refrigerated milk will keep for 48 hours and frozen milk will keep for 3 months.

Heating Breast Milk

Warm breast milk with a baby bottle warmer or in a bowl of warm water. Do not use a microwave oven or hot water.

Do's and Don'ts

- If freezing breast milk, fill bottle or bag to ¾ capacity to allow space for ice expansion.
- Never store breast milk on the door side of a fridge.
- To preserve the nutrients of frozen breast milk, place frozen milk into cold storage chamber in fridge to defrost overnight, then use flowing warm water to warm the bottle or the bag. Gently shake the bottle or the bag before using.
- Never put frozen breast milk into microwave oven or boiling water to avoid nutrition loss and scalding your baby.
- Unfrozen breast milk cannot be refrozen.
- Never mix fresh and unfrozen breast milk together.

Recycling

Batteries contain substances that may pollute the environment. Do not throw away batteries with normal household waste, but dispose at an official collection point for batteries.

Do not throw away the appliance with normal household waste. Please follow local regulations for disposal of electronic products. By disposing in a correct way, you are helping to reduce the negative impact to the environment and human health.

9

FAQ

Lack of Suction	Examine whether parts of breast pump are correctly assembled and whether duckbill valve is perforated. Make sure the silicone diaphragm and petal massage pad are firmly fitted onto the pump body to achieve a complete seal.
Unable to Express Milk	Check the suction power is sufficient and assembling of breast pump is correct. Relax and retry at a later time as milk can be expressed after several attempts. Refer to "Tips" section of manual.
Experiencing Pain When Using	Possibly caused by overexertion of suction. Try starting with massage mode to stimulate milk before switching to express mode. Consult with health experts or breastfeeding experts.
On/Off Problem	Check if adapter is properly connected with the plug or the socket in the machine.

Specifications

Power adapter input:	100-240V 50/60Hz
Power adapter output:	12V-1000mA
Nominal voltage:	12V
Rated current:	6W
Lithium battery:	7.4V 2200mAh
Product life:	More than 800 hours
Lithium battery life:	More than 500 charges
Fixed time:	30 minutes
Suction power:	60mmhg--280mmhg
Noise limited:	<60dB
IP level:	IP22
Environmental conditions:	5-40°C RH<90%
Storage and operation environment:	-25-50°C, RH15%-93%, 700-4060hPa
Executive standard:	13.GB4706.1-2005 production

10