



Little Martin's Electric Bottle Brush

User Manual

For Model BBB1708

Thank you for choosing Little Martin's Drawer. We advise that you carefully read this instruction manual to ensure product efficiency and correct use.

- Please keep this manual in a safe place.
- If giving as a gift, please be sure to include this manual.

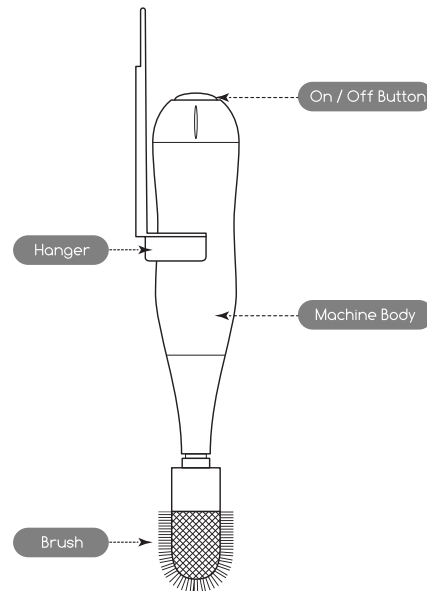
Contents

Precautions	1
Name of Parts.....	2
Operating Instructions	3
Recharging	4
Warranty Certificate.....	on the back cover

Precautions

- Keep out of reach of children.
- Keep away from flammable, explosive gases.
- Do not immerse appliance in water or any other liquid.
- Do not use product for purposes other than intended.
- Do not attempt to disassemble.
- Hold brush body and cup or bottle firmly when cleaning.
- Product is intended for household use only.

Name of Parts





Warranty Certificate

This certificate promises our customers that they will receive free repair. If you notice any problems listed below within the warranty period, please contact our customer service with this certificate.

1. Once you have used this product, we basically will not offer exchange.
2. When the product is damaged (after proper use) within the warranty period which is a year from the purchase date, we will repair it for free. Contact us via email support@littlemartinsdrawer.com, and send the product over to our customer center.
3. Even within the warranty period, in the following situation the repair process will come with a fee.
 - a. Natural discoloration of the plastic area.
 - b. Damage due to misuse of the product.
 - c. Damage due to fire, water, earthquake and other natural disasters.
 - d. Damage due to commercial or business usage.
 - e. The shipping fee for paid repair.
4. This service will apply only inside United States.
5. Once the product is out of production and certain parts are out of stock, we will not be able to offer certain repairs.



CONSULT INSTRUCTIONS FOR USE



100% RECYCLEABLE



WASTE FROM ELECTRICAL AND ELECTRONIC EQUIPMENT (WEEE)



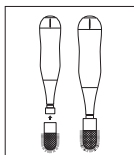
Operating Instructions

①



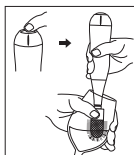
Add water and cleaning solution into cup or bottle to be washed.

②



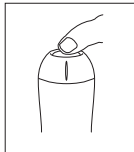
Connect the brush to the machine body.

③



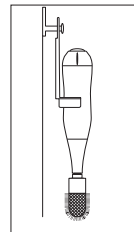
With one hand firmly hold the machine body, and with the other hand hold the cup or bottle, then press the On/Off button to begin cleaning.

④



Press the On/Off button to stop brush when cleaning is complete.

⑤



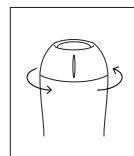
Hang the appliance with wall hanger after use.

Recharging

①

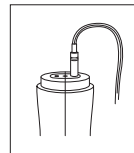
Remove cover by turning counterclockwise.

②



Connect DC plug (a red light will appear to indicate charging).

③



After approximately 16 hours unplug charger and replace cover.