



Little Martin's Nasal Aspirator

# User Manual

For Model BNA1601

## Warnings

Before using this device, please do read all instructions in this manual. Please keep this manual as it contains important information.

1. Do not allow children to play with this device because it is not a toy. Keep the device out of children's reach to prevent small parts and accessories from being swallowed by them accidentally.
2. This device is to clean stuffy noses; do not use it in baby's mouth or ears.
3. Clean the device first if the accumulated volume of mucus is over the safe capacity of the mucus cup (about 4 mL). Always clean and dry thoroughly before and after each use, please refer to the section of "Clean Instructions."
4. Do not insert the silicone tip into the nostril too deeply.
5. Do not use it on the baby for a long time. A few seconds will be enough.
6. Do not use this device if there is any wound, symptom of inflammation, or bleeding at the nose.
7. In the case of infection, fever, nasal irritation, or hemorrhage, please stop using this device and consult your physician.
8. This device is restricted for personal use.
9. The silicone tip is the applied part.
10. No modification of this device is allowed. Please do not attempt to disassemble the device without following the instructions in this manual.
11. Replace the batteries when the suction power becomes weak during use.
12. Duty cycle : 30 seconds ON / 2 minutes OFF.
13. The expected service life of the device is three years under normal usage.

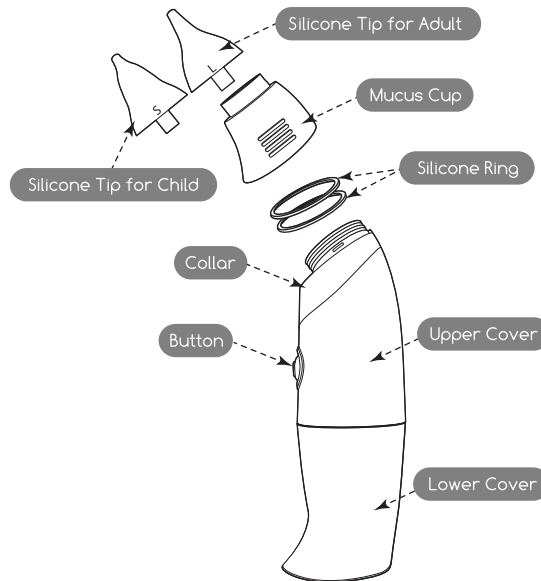
## Battery Warnings

1. Use alkaline batteries only.
2. Only batteries of the same or equivalent type as recommended should be used.
3. Do not mix alkaline, standard (carbon-zinc), or rechargeable (nickel-cadmium) batteries.
4. Do not use a mix of used and new batteries.
5. Batteries should be inserted with the correct polarity.
6. Exhausted batteries should be removed from the device.
7. Be sure that all contact surfaces are clean before installing batteries.
8. There is a risk of explosion if the battery is replaced by an incorrect type.
9. Remove batteries if the device will not be used for a long period of time.

## Contents

- ① 1 Main Unit
- ② 2 Sizes of Silicone Tips (for adult and child)
- ③ 1 Instruction Manual
- ④ 2 Spare Silicone Rings

## Parts Description



## Warranty Certificate

This certificate promises our customers that they will receive free repair. If you notice any problems listed below within the warranty period, please contact our customer service with this certificate.

1. Once you have used this product, we basically will not offer exchange.
2. When the product is damaged (after proper use) within the warranty period which is a year from the purchase date, we will repair it for free. Contact us via email [support@littlemartinsdrawer.com](mailto:support@littlemartinsdrawer.com), and send the product over to our customer center.
3. Even within the warranty period, in the following situation the repair process will come with a fee.
  - a. Natural discoloration of the plastic area.
  - b. Damage due to misuse of the product.
  - c. Damage due to fire, water, earthquake and other natural disasters.
  - d. Damage due to commercial or business usage.
  - e. The shipping fee for paid repair.
4. This service will apply only inside United States.
5. Once the product is out of production and certain parts are out of stock, we will not be able to offer certain repairs.



BATCH CODE  
SEE THE LOT LABEL AT THE BOTTOM OF THE DEVICE



CONSULT INSTRUCTIONS FOR USE



100% RECYCLEABLE



WASTE FROM  
ELECTRICAL AND  
ELECTRONIC  
EQUIPMENT (WEEE)



## Instructions for Use



1 Separate the upper cover away from the lower cover in a straight direction. Do not bend the covers by brute force as it can be slid open easily.

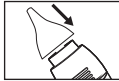
2 Insert 2 x 1.5V AA alkaline batteries with the correct polarity as shown.

3 Check to make sure that the two silicone rings are properly seated on the grooves. Close the covers until the "click" sound is heard.

4 Choose the suitable silicone tip based on the size of patient's nostrils.



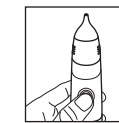
5 Be sure to place the silicone tip securely on the mucus cup.



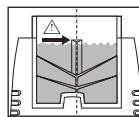
6 Gently insert the silicone tip into patient's nostril. Do not insert it too deeply.



7 Press the button for a few seconds to collect mucus. Stop pressing the button when finished using the device and then the power will be stopped.



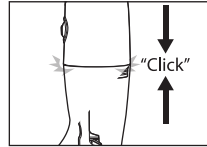
⚠ If the accumulated volume of mucus is nearly over the safe capacity of the mucus cup (about 4 mL), follow the safe capacity of the mucus cup (about 4mL), follow the section of "Clean Instructions" to clean the device first. Do not use the device if the mucus level is nearly over the opening channel (where the arrow points to on the right).



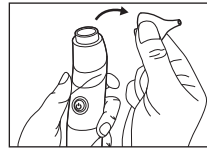
3

## Clean Instructions

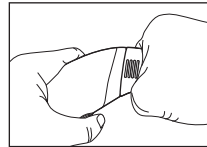
1 Be sure that the upper and lower covers are closed firmly before cleaning the device.



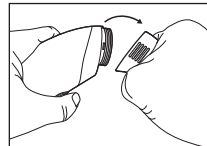
2 Remove the silicone tip.



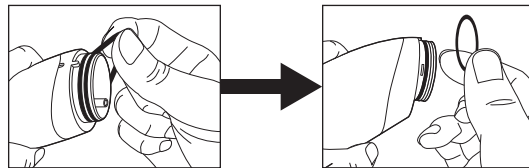
3 Hold the mucus cup with the part between thumb and index finger.



4 Bend the mucus cup downwards gently to remove it from the collar.

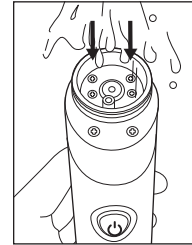


5 Remove the silicone rings from the collar for cleaning every several uses of the device. The silicone rings do not need to be cleaned every time.

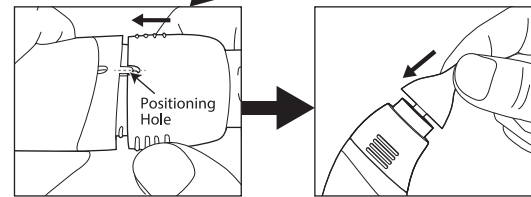
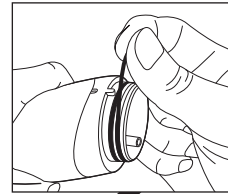


4

6 Wash the parts thoroughly with clean water and soap. Rinse the collar under the tap. Dry the parts before assembling them.



7 Reassemble all parts as shown below:



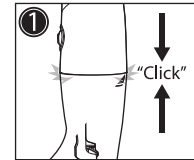
\*Properly align the positioning hole on the mucus cup.

8 Be sure that all parts fit tightly together on the device.

5

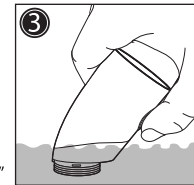
When the accumulated volume of mucus is over the safe capacity of the mucus cup during use of the device, if you see mucus dripping out of the air vent on the back side of the collar, please follow instructions below.

1 Be sure that the upper and lower covers are closed firmly.



2 Remove the silicone tip and mucus cup.

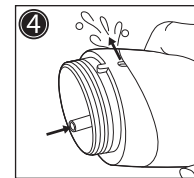
3 Have the collar immersed in clean water as shown. Press the button for 15 seconds and the inner pump will be cleaned.



4 The water flows in and out of the inner pump in the direction as shown.

5 Change the water and repeat "step 3" several times if necessary.

6 Remove the device from water once the cleaning is completed. Keep pressing the button for approximately 30 seconds until the inner pump is dried.



7 Dry the collar and reassemble the parts.

## Operation, Storage & Transportation Environment Information

Operation Environment	Temperature: 5°C~40°C Humidity: 15% ~ 93% Atmospheric Pressure: 700~1060 hPa
Storage & Transportation Environment	Temperature: -10°C~50°C Humidity: ≤93% Atmospheric Pressure: 700~1060 hPa

6